

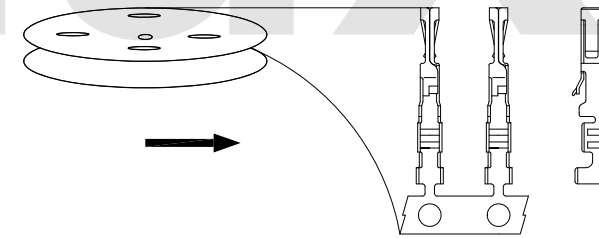
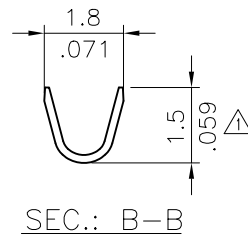
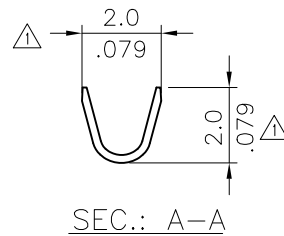
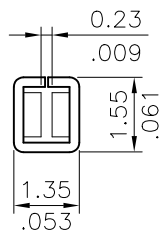
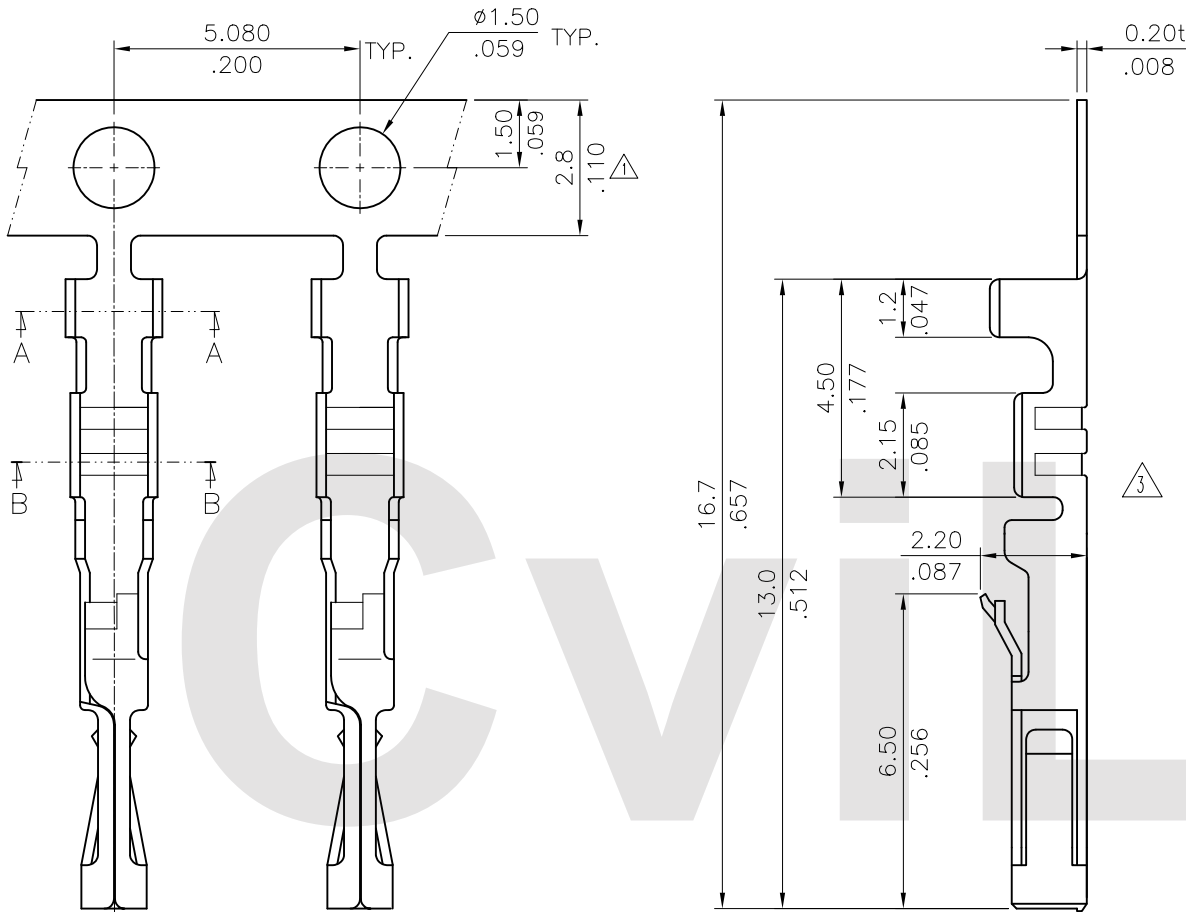
* Material: Phosphor Bronze

Wire Range	Insulation Diameter	Reel Q'ty
AWG #24~#30	1.50 (.059) MAX.	15,000 PCS.

Ordering Code

$\frac{CI33}{①}$ $\frac{T02}{②}$ $\frac{*}{③}$ $\frac{P}{④}$ $\frac{E}{⑤}$ $\frac{0-4}{⑥}$

- ① Series No.
- ② Type: T02= AWG #24 ~#30
- ③ Plating: 1= 2.03 μ m(80 μ "") Min. Tin
A= Selective gold flash plated over Nickel
- ④ Material: P= Phosphor Bronze
- ⑤ Plating method: E= Pre-tinned
- ⑥ Option: 0-4= Standard



△ PULL OUT DIRECTION(PLATED)

CIVILUX CORP
 2015.07.02
 ISSUED

RoHS Compliant

SYMBOL	NAME	DATE	REVISIONS	APPROVED BY:	DATE	UNIT:	TOLERANCE UNLESS OTHERWISE SPECIFIED	TITLE:	 瀚荃股份有限公司 CviLux Corporation
④	Karen	6/13-15'	ECNT115140/ECRT115017			mm / inch		CRIMP TERMINAL	
③	Enya	7/9-13'	ECR13071-0 / ECN13182-0	DRAWN BY:	Karen 6/22-15'				
②	SUN	8/26/05'	ECN05283	ENGINEER:	Sun 6/23-15'	.X ± 0.20/008	X* ± 1"	MATERIAL:	
①	JASON	09/08-03	ECN03275, ECR03018-0	CHECKED BY:	Eisley 6/23-15'	.XX ± 0.10/004	.X* ±	FINISH:	
				APPROVED BY:	Eisley 6/23-15'	.XXX ± 0.05/002	.XX* ±		DRAWING NO. CI3307SH PART NO. CI33T02*PE0-4
								SCALE	5 / 1 SHEET 1 OF 1