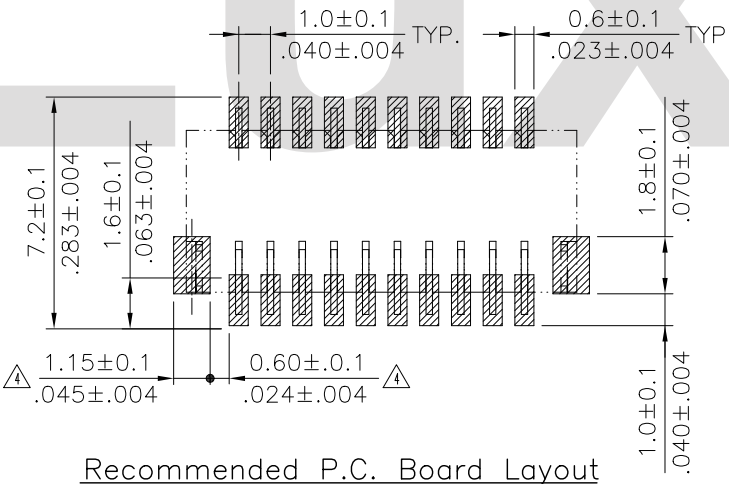
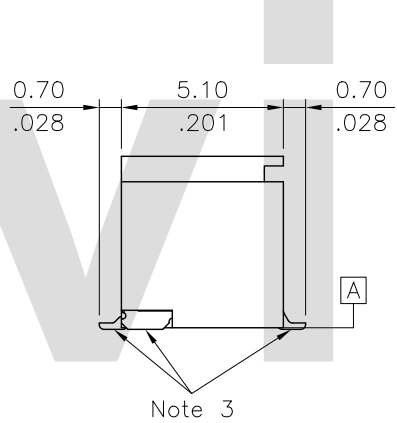
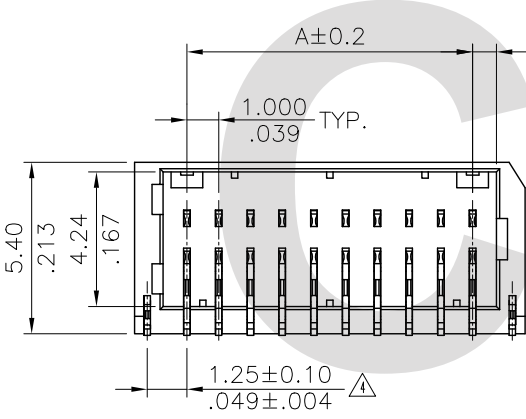
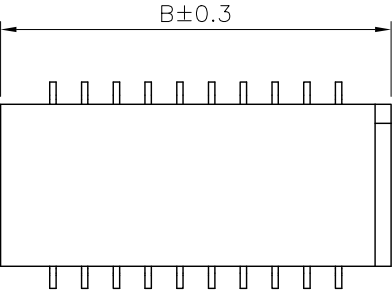


Ordering Code:

CI11 ** M 2 H D 0 - ** -NH
 ① ② ③ ④ ⑤ ⑥ ⑦ ⑧ ⑨

- ① Series No.
- ② No. of Circuits:
- ③ Contact type: M= SMT header
- ④ Plating option:
2= Gold flash plated over 50μ" Nickel
- ⑤ Type: H= Side entry
- ⑥ Row option:
D= Dual Row Type
- ⑦ Other option:
0= Standard
- ⑧ Packing option:
R0= Tape & reel
T0= Tube
- ⑨ NH= For Lead Free IR Processes and Halogen-Free


- Note:
1. Material:
Base: High Temperature plastic UL 94V-0, Color Nature
Contact: Phosphor Bronze
Tab: Brass
 2. Plating:
Tab: Tin plated over Nickel
 3. Misalignment of solder tail and fixed tab from **A**
Upper direction: 0.05 Max. , Lower direction: 0.10 Max.
Offset between upper and lower 0.10 MAX.



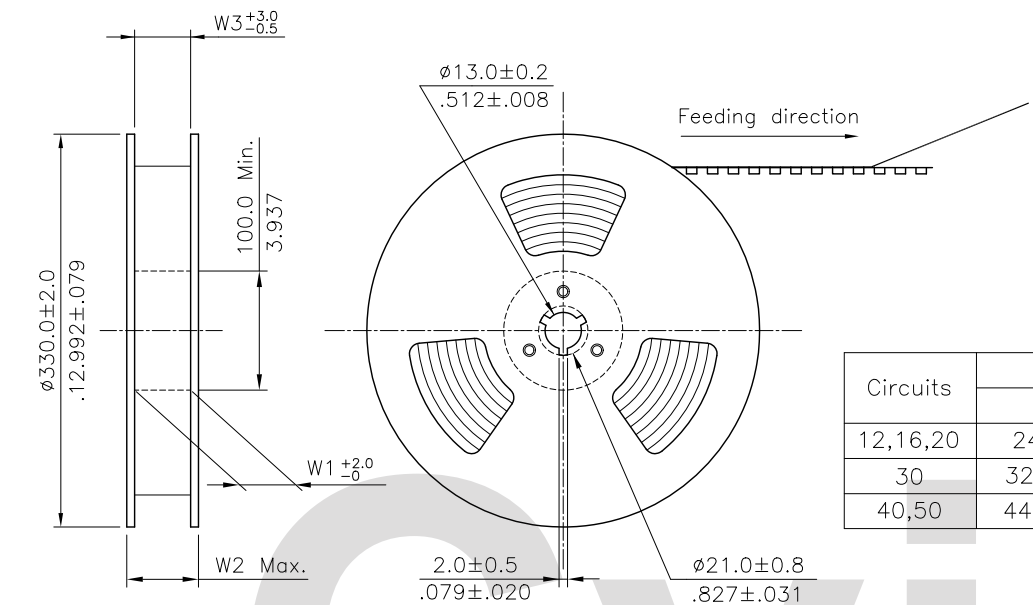
DIM. A = 1.00 x (No. of circuits/2-1)
 DIM. B = DIM. A + 3.3
 ⚠ * Available in 12,16,20,30,40,50 Circuits

Halogen-Free
 Lead Free Process
 RoHS Compliant

Recommended P.C. Board Layout

| | | | | | | | | | | |
|-----|-------|-----------|---------------------|--------------|--------|----------|--------------------------------------|---|--|--------------|
| ⑥ | Sun | 7/05-11' | ECR10039-2/ECN11060 | | | DATE | UNIT: mm / inch | TITLE: 1.00MM(.079") Dual Row Side Entry SMT Header |  瀚荃股份有限公司 CviLux Corporation | |
| ⑤ | Hank | 1/7-09' | ECN09007/ECR08090-0 | DRAWN BY: | Sun | 7/11-11' | TOLERANCE UNLESS OTHERWISE SPECIFIED | MATERIAL: | | |
| ④ | Sun | 11/12-07' | ECN07455 | ENGINEER: | Eisley | 7/13-11' | .X ± 0.30/.012 X' ± 1" | FINISH: | | |
| ③ | Sandy | 5/9-07' | ECN07179 | CHECKED BY: | Eisley | 7/13-11' | .XX ± 0.20/.008 .X' ± | | | |
| SYM | NAME | DATE | REVISIONS | APPROVED BY: | David | 7/13-11' | .XXX ± 0.10/.004 .XX' ± | DRAWING NO. CI1121SG | PART NO. CI11**M2HD0-**-NH | |
| | | | | | | | | | SCALE 4 / 1 | SHEET 1 OF 2 |

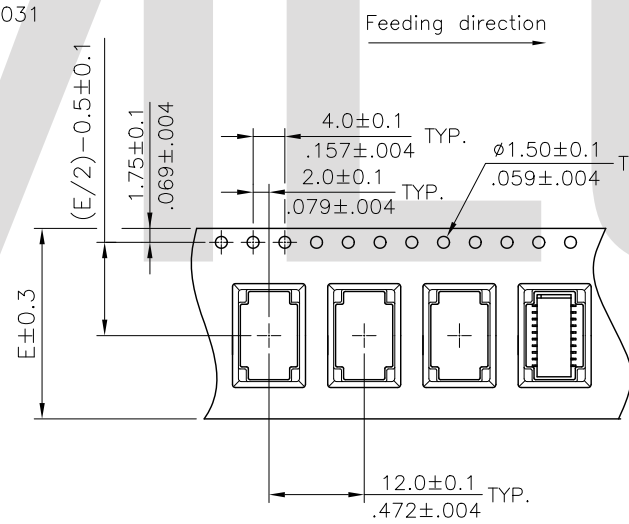
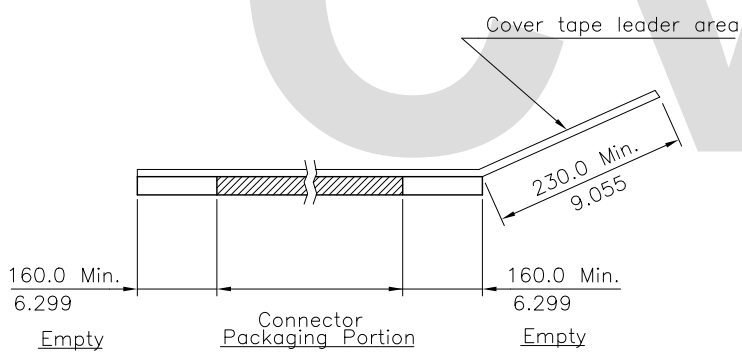




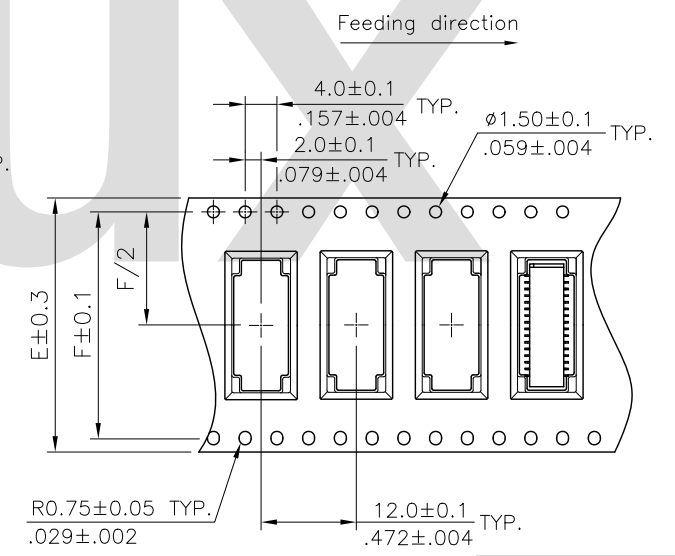
NOTE :

- △ * Reel Material : Corrugated Paper
- * Carrier Material : Transparent Anti-static Polysyrene.
- * Cover Tape Material : Polyester
- * Cover Tape Peel Strength : 0.1N – 1.3N
- * Carrier camber is within 1mm in 100mm
- * All dimensions meet EIA-481-2 requirements.
- * Quantity : 1000 PCS/Reel

| Circuits | Dimension | | | | | Packing (Reel/Caton) |
|----------|-------------|--------------|-------------|-------------|-------------|----------------------|
| | E | F | W1 | W2 | W3 | |
| 12,16,20 | 24.0(.945) | - | 24.5(.965) | 30.5(1.200) | 24.5(.965) | 9 |
| 30 | 32.0(1.260) | 28.40(1.118) | 32.5(1.280) | 38.5(1.516) | 32.5(1.280) | 7 |
| 40,50 | 44.0(1.732) | 40.40(1.596) | 44.4(1.748) | 50.4(1.984) | 44.4(1.748) | 5 |



WIDTH : 24 mm Carrier



WIDTH : 32.44 mm Carrier

RoHS Compliant

| | | | | | | | | |
|-----|-------|-----------|---------------------|--------------------|----------|--------------------------------------|---|--------------------------------|
| △6 | Sun | 7/05-11' | ECR10039-2/ECN11060 | | DATE | UNIT: mm / inch | TITLE: 1.00MM(.079") Dual Row Side Entry SMT Header | 瀚荃股份有限公司 CviLux Corporation |
| △5 | Hank | 1/7-09' | ECN09007/ECR08090-0 | DRAWN BY: Sun | 7/11-11' | TOLERANCE UNLESS OTHERWISE SPECIFIED | MATERIAL: | |
| △4 | Sun | 11/12-07' | ECN07455 | ENGINEER: Easley | 7/13-11' | .X ± X' ± 1' | FINISH: | DRAWING NO. C11121SG |
| △3 | Sandy | 5/9-07' | ECN07179 | CHECKED BY: Easley | 7/13-11' | .XX ± .X' ± | | PART NO. C11**M2HD0-**-NH |
| SYM | NAME | DATE | REVISIONS | APPROVED BY: David | 7/13-11' | .XXX ± .XX' ± | SCALE | SHEET 2 OF 2 |

CVILUX CORP
2011.07.22
ISSUED