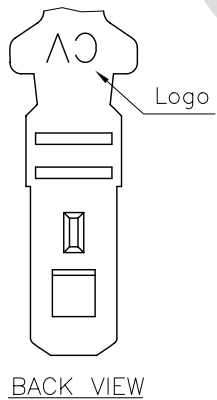


| Wire Range | Insulation Diameter | Reel Q'ty |
|-------------|---------------------|-------------|
| AWG #24~#30 | 1.50 (.059) MAX. | 10,000 PCS. |


Ordering Code:

CI01 T01 2 P P 0
 ① ② ③ ④ ⑤ ⑥

- ① Series No.
- ② Type: T01= AWG #24~ #30
- ③ Plating: 2= Gold Flash plated over 1.27μm(50μ") Nickel
- ④ Material: P= Phosphor Bronze
- ⑤ Plating method: P= Post Plating
- ⑥ Option: 0= Standard



RoHS Compliant

| | | | | | | | | |
|-----|-------|----------|-----------|--|-------------------|---|--|--|
| ④ | | | | | DATE | UNIT: mm / inch | TITLE: 2.00MM(.079") CRIMP TERMINAL |  瀚荃股份有限公司 CviLux Corporation |
| ③ | | | | | DRAWN BY: Sandy | TOLERANCE UNLESS OTHERWISE SPECIFIED | MATERIAL: | |
| ② | | | | | ENGINEER: Eisley | .X ± 0.20/008 X' ± 1' | CUSTOMER: F2B003 | DRAWING NO. CI0188SB PART NO. CI01T012PPO |
| ① | Sandy | 1/20-09' | ECN09011 | | CHECKED BY: David | .XX ± 0.10/004 X' ± | | SCALE 6 / 1 SHEET 1 OF 1 |
| SYM | NAME | DATE | REVISIONS | | APPROVED BY: Alex | .XXX ± 0.05/002 .XX ± | | |

CIVILUX CORP
 2009.02.03
 ISSUED