

Material:
 Insulator: Glass filled Polyester UL 94V-0
 Contact: Copper alloy
 Shell: Steel, Tin plated as standard

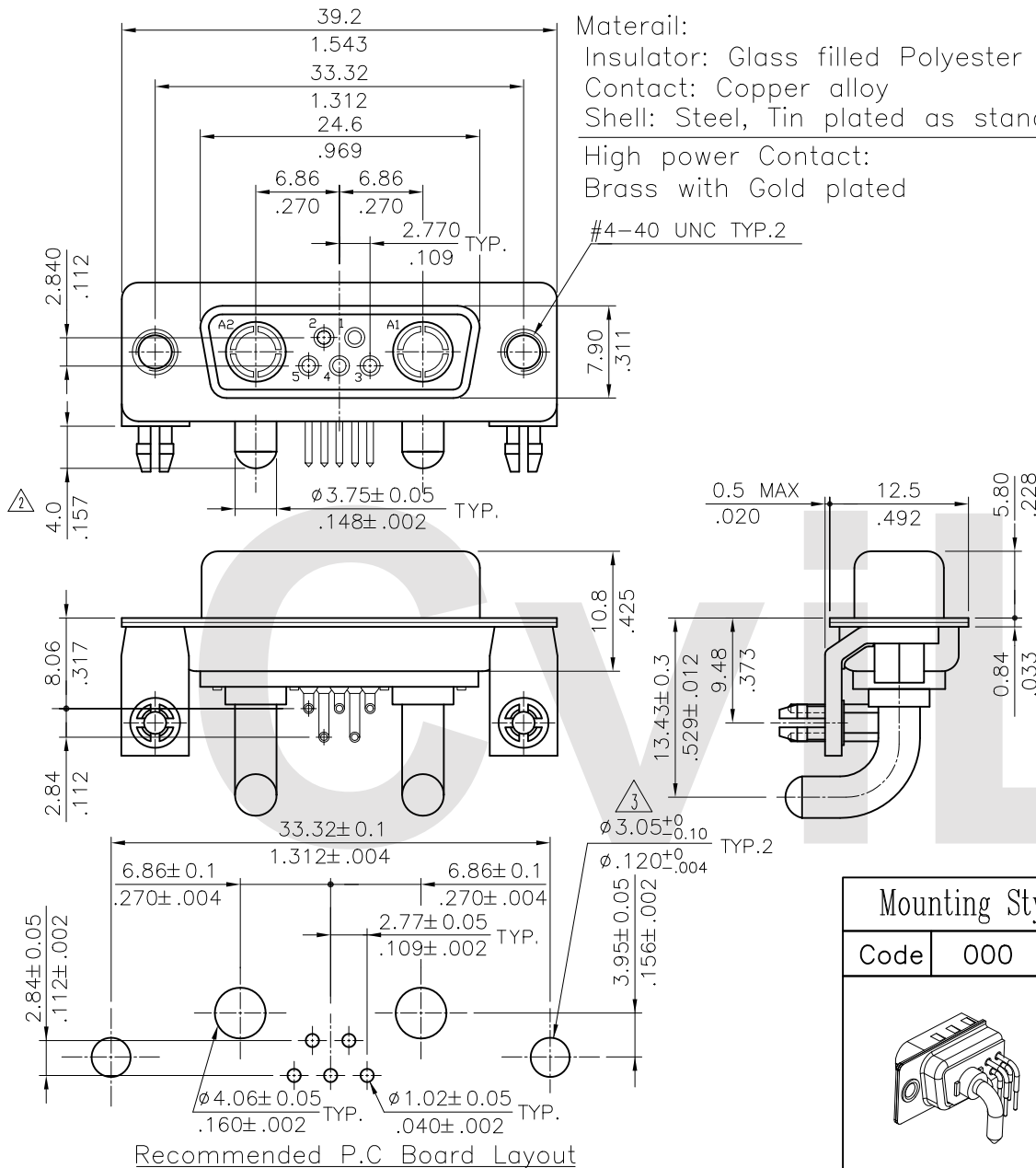
High power Contact:
 Brass with Gold plated

#4-40 UNC TYP.2

Ordering Code

C7W2 S P H 3 2 1 40 I10
 ① ② ③ ④ ⑤ ⑥ ⑦ ⑧ ⑨

- ① Series No.
- ② Connector Type: S= Receptacle
- ③ Contact type: P= High Power Contact
- ④ Contact tail style: H= Right Angle Dip type
- ⑤ High power contact plating:
 2= Gold flash plated over Nickel
 3= 15 μ " Gold plated over Nickel
 4= 30 μ " Gold plated over Nickel
 5= 50 μ " Gold plated over Nickel
- ⑥ Signal contact plating:
 2= Gold flash plated over Nickel
 3= 15 μ " Gold plated over Nickel
 4= 30 μ " Gold plated over Nickel
- ⑦ Insulator color: 1= Black, 6= Green
- ⑧ Performance: 40= 40A
- ⑨ Mounting Style:
 000= With ϕ 3.05mm holes on shell
 B00= Riveted #4-40 UNC open nuts on front shell
 C00= Riveted #4-40 UNC open nuts on rear shell
 I00= Riveted #4-40 UNC ground tabs with ϕ 3.2mm holes
 I10= Riveted #4-40 UNC ground tabs with board locks(standard)



Mounting Style

Lead Free Process

RoHS Compliant

Code	000	Code	B00	Code	C00	Code	I00	Code	I10
			DIM. L= 4.0mm		DIM. L= 4.0mm		$\phi A=3.2mm$		

Recommended P.C Board Layout

④					DATE	UNIT: mm / inch	TITLE: C7W2 40A HIGH POWER FEMALE D-SUB CONNECTOR (RIGHT ANGLE TYPE)	 瀚荃股份有限公司 CviLux Corporation
③	Karen	3/20-17'	ECNT117049/ECRT117003	DRAWN BY:	Karen	3/20-17'	TOLERANCE UNLESS OTHERWISE SPECIFIED	
②	Jim	10/13/06'	ECR06094-0/ECN06369	ENGINEER:	Sun	3/20-17'	.X \pm 0.30/.012 X' \pm 1'	
①	SUN	3/24/05'	ECR05025-0/ECN05095	CHECKED BY:	Eisley	3/22-17'	.XX \pm 0.20/.008 .X' \pm	
SYM	NAME	DATE	REVISIONS	APPROVED BY:	Eisley	3/22-17'	.XXX \pm 0.10/.004 .XX' \pm	

CVILUX CORP
2017.03.23
ISSUED

DRAWING NO. **C7W214SE** PART NO. **C7W2SPH***40*****
 SCALE 2 / 1 SHEET 1 OF 1