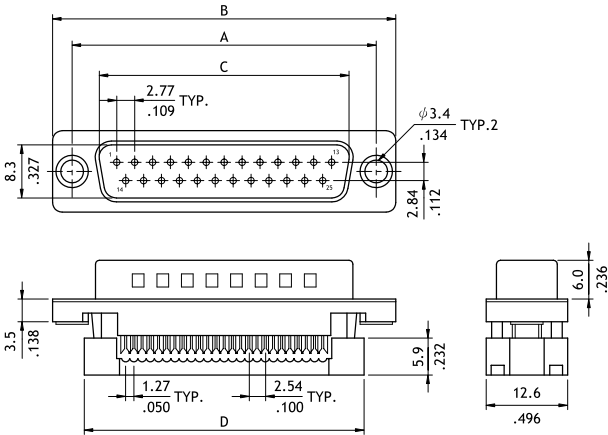


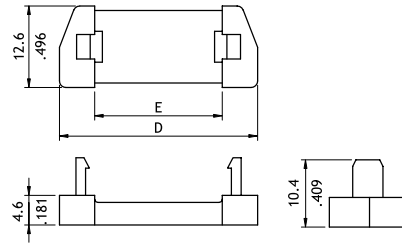
# CD91 Series Flat Cable - IDC D-Sub

- ⊙ Mate with standard D-Sub and CW03
- ⊙  $\phi$  3.4mm holes or riveted nuts insert available

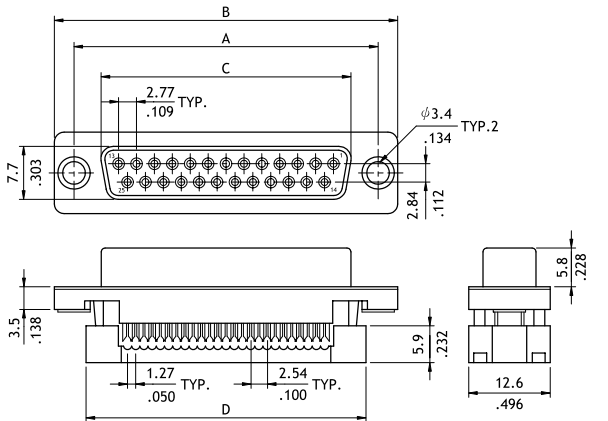


Plug Connector

Circuits	Dimension				
	A	B	C	D	E
9	25.0(.984)	30.8(1.213)	16.92(.666)	22.4(.882)	12.08(.476)
15	33.3(1.311)	39.2(1.543)	25.25(.994)	30.8(1.213)	19.7(.776)
25	47.1(1.854)	53.1(2.091)	38.96(1.534)	44.5(1.752)	32.4(1.276)
37	63.5(2.500)	69.4(2.732)	55.42(2.182)	61.4(2.417)	47.72(1.879)

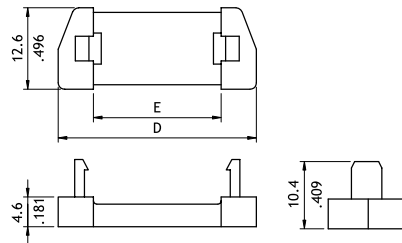


Strain relief



Receptacle connector

Circuits	Dimension				
	A	B	C	D	E
9	25.0(.984)	30.8(1.213)	16.3(.642)	22.4(.882)	12.08(.476)
15	33.3(1.311)	39.2(1.543)	24.6(.969)	30.8(1.213)	19.7(.776)
25	47.1(1.854)	53.1(2.091)	38.3(1.508)	44.5(1.752)	32.4(1.276)
37	63.5(2.500)	69.4(2.732)	54.8(2.157)	61.4(2.417)	47.72(1.879)



Strain relief

## Ordering Code

1 2 3 4 5 6  
**CD91 25 PA7 S0**

- 1** Series No.
- 2** Contacts:  
9,15,25,37
- 3** Connector type:  
P= Plug  
S= Receptacle
- 4** Plating code:  
A= Selective Gold flash over Nickel  
\*Optional plating available but MOQ requested
- 5** Insulator Color:  
1= Black , 7= Blue
- 6** Other options:  
S0= Metal shell with  $\phi$  3.4mm holes with S/R (Standard)  
S1= Metal shell #4-40 UNC insert nuts with S/R  
\*Special options consult manufacturer