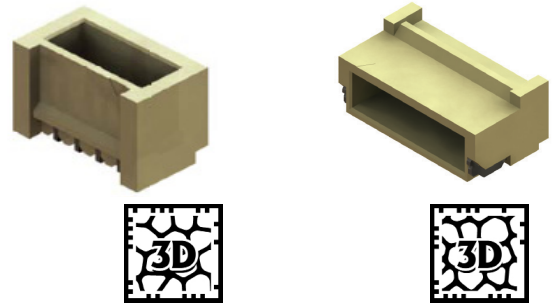


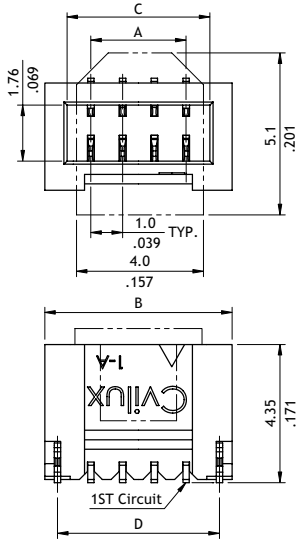
CI14 Series 1.00mm(.039") Wire to Board SMT Side / Top Entry Headers

- ⊙ Fixed tabs provide PCB hold-down
- ⊙ Mate with CI14 Housing
- ⊙ Insulator: High temperature plastic UL 94V-0, Color Nature

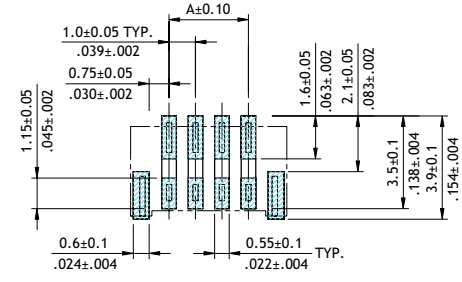
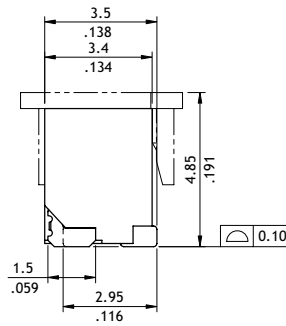
RoHS Compliant   



P/N CI14**M1VL0-NH

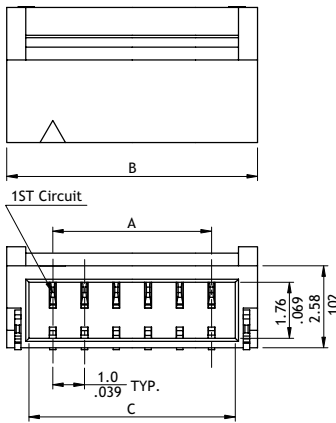


A = 1.0 x No. of Spaces
 B = A + 2.7
 C = A + 1.5
 D = A + 2.0

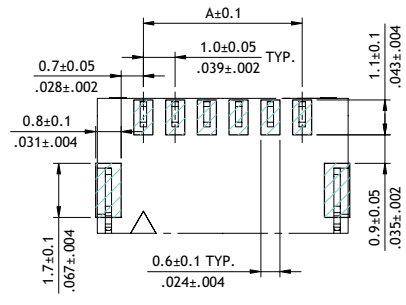
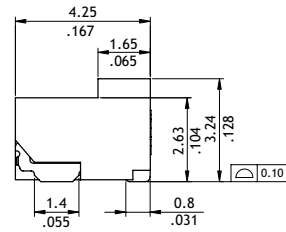


Recommended P.C. Board Layout (2)

P/N CI14**M1HRE-NH



A = 1.0 x No. of Spaces
 B = A + 2.9
 C = A + 1.5



Recommended P.C. Board Layout

Ordering Code

① CI 14 ② 0 6 ③ M ④ 1 ⑤ H ⑥ RC - ⑦ NH

- ① Series No.
- ② No. of Circuits:
- ③ M = SMT Type
- ④ Plating Code: 1 = Matte Tin over Nickel
- ⑤ Type: V = Top Entry, H = Side Entry
- ⑥ Other Options:
 R0 = Normal Type with Reel Packing (H Type, 02 to 20)
 RL = Normal Lock Type with Reel Packing (H Type, 02 to 20)
 RC = Short Type with Reel Packing (H Type, 02 to 12)
 RE = Short Lock Type with Reel Packing (H Type, 02 to 12)
 L0 = Locking Type with Reel Packing (V Type, 03 to 12)
- ⑦ -NH = For Lead Free IR process and Halogen-Free