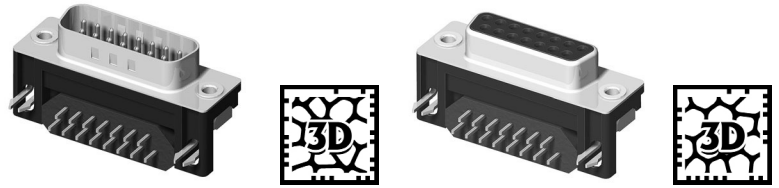
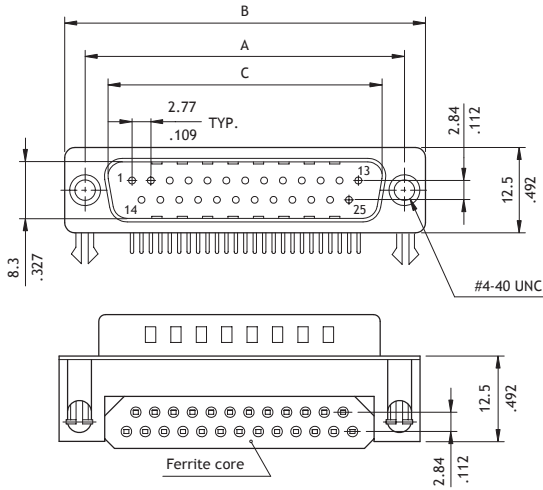


CD62 Series 8.10mm Footprint EMI Right Angle DIP Solder D-Sub

- Mate with standard D-Sub
- With ferrite core
- Optional ground hooks or ground tabs

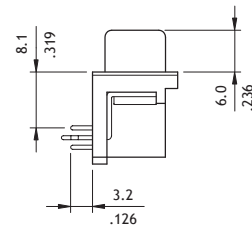


P/N CD62**P*1**

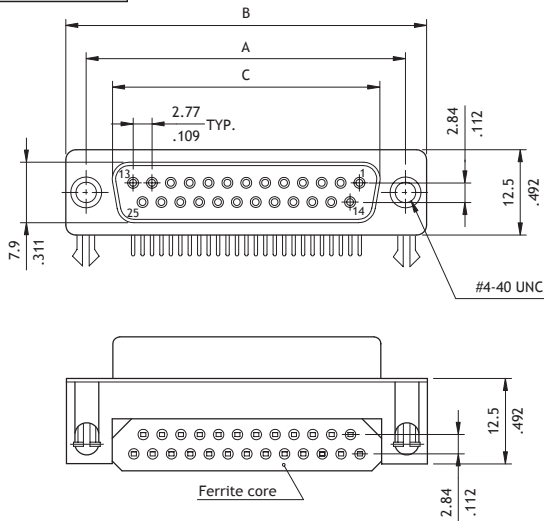


Plug Connector

Circuits	Dimension		
	A	B	C
9	25.0(.984)	30.8(1.213)	16.92(.666)
15	33.32(1.312)	39.2(1.543)	25.25(.994)
25	47.04(1.852)	53.1(2.087)	38.96(1.534)
37	63.5(2.500)	69.4(2.732)	55.42(2.182)

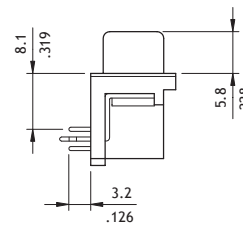


P/N CD62**S*1**



Receptacle Connector

Circuits	Dimension		
	A	B	C
9	25.0(.984)	30.8(1.213)	16.3(.642)
15	33.32(1.312)	39.2(1.543)	24.6(.969)
25	47.04(1.852)	53.1(2.091)	38.3(1.508)
37	63.5(2.500)	69.4(2.732)	54.8(2.157)



Ordering Code

① CD 6 2 ② 2 5 ③ P ④ 2 ⑤ 1 ⑥ F 0

- ①** Series No.
- ②** No. of Circuits: 09, 15, 25, 37
- ③** Connector Type: P = Plug
S = Receptacle
- ④** Plating Option: 2 = Gold flash over Nickel
A = Selective Gold flash over Nickel
*Optional plating available but MOQ requested
- ⑤** Insulator Color: 1 = Black
- ⑥** Other Options:
F0 = Riveted ground hooks with #4-40 UNC Open (Standard)
I0 = Riveted ground tabs thread #4-40 UNC Open and ground tabs with ϕ 3.2mm holes
J0 = Assembly ground hooks by #4-40 UNC Hex screws
G0 = Riveted ground hooks pre-loaded #4-40 UNC Hex screws
*Special options consult manufacturer