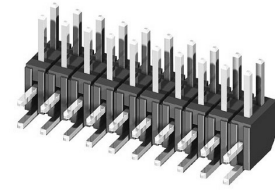
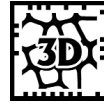
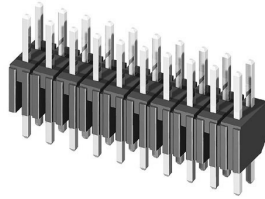
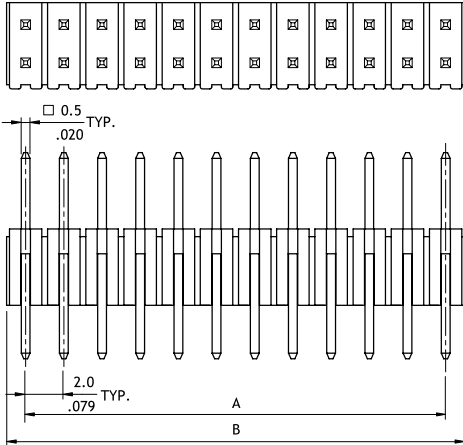


CH72 Series 2.00mm(.079") Dual Row Pin Headers

☉ Mate with CB74, CB78 series

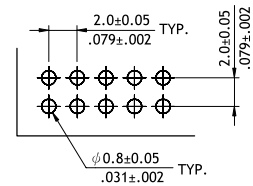
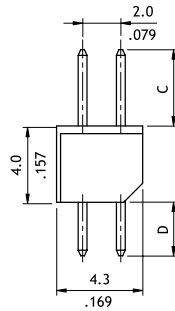


P/N CH72**2V100



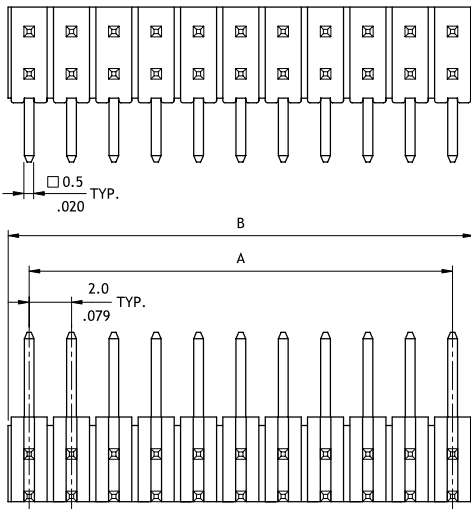
$A = 2.0 * \text{No. of Spaces}$
 $B = A + 2.0$

Option Code	Pin Dimension	
	C	D
00	4.0(.157)	2.8(.110)



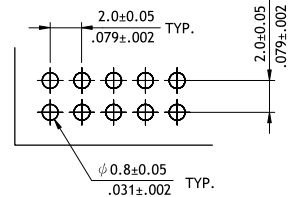
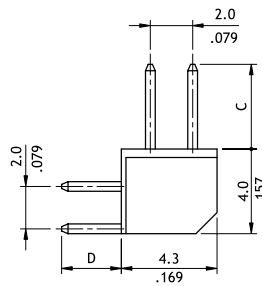
Recommended P.C. Board Layout

P/N CH72**2H100



$A = 2.0 * \text{No. of Spaces}$
 $B = A + 2.00$

Option Code	Pin Dimension	
	C	D
00	4.0(.157)	2.8(.110)



Recommended P.C. Board Layout

Ordering Code

① **CH** ② **7** ③ **2** ④ **V** ⑤ **1** ⑥ **00**

- ① Series No.
- ② No. of Circuits: 08 to 50
- ③ Plating Code:
2 = Gold flash over Nickel
- ④ Tail: V = Straight DIP Type
H = Right Angle DIP Type
- ⑤ Color: 1 = Black
- ⑥ Other Options:
00 = Standard
*See option code table

CH

PIN HEADER CONNECTORS