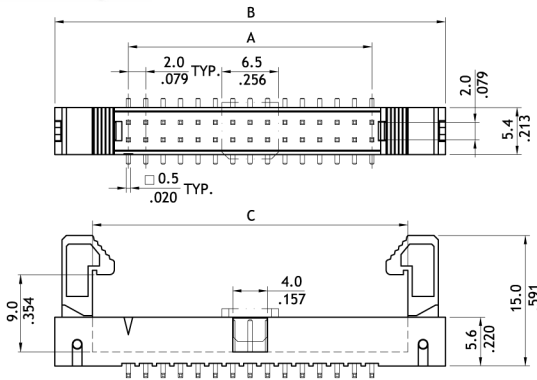


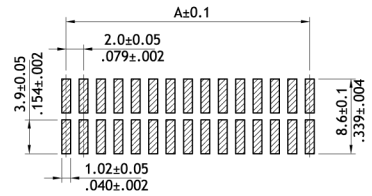
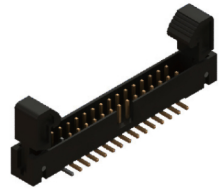
**CH70 Series 2.00mm(.079") Straight SMT Dual Row Shrouded Pin Headers**

☉ Mate with CA11 series Flat Cable-IDC Socket

RoHS Compliant



A = 2.0 \* No. of Spaces  
 B = A + 16.9  
 C = A + 8.25



Recommended P.C. Board Layout

**Ordering Code**

**1** **2** **3** **4** **5** **6**  
**CH70 50 D M 1 Y0**

**1** Series No.

**2** No. of Circuits:  
 Without Pad: 08 to 50  
 With Pad: 10 to 50

**3** Plating Code:  
 D = Selective 10µm (0.25µm)  
 Gold plated over Nickel

**4** Tail Style: M = SMT Type

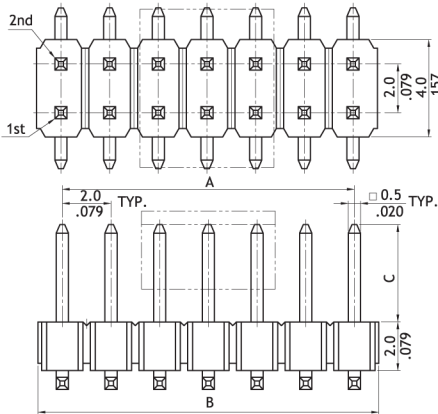
**5** Color: 1 = Black

**6** Other Options:  
 Y0 = Tray Packing (With Pad)  
 R0 = Tape & Reel (With Pad)

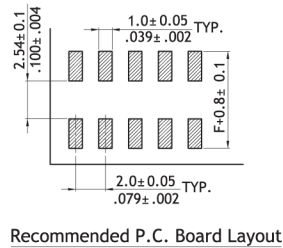
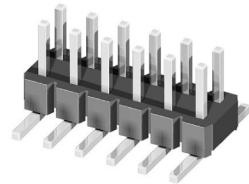
**CH71 Series 2.00mm(.079") Dual Row SMT Pin Headers**

☉ Mate with CB74, CB76 and CB78 series

RoHS Compliant



A = 2.0 x No. of Spaces  
 B = A + 2.0



Option Code	Pin Dimension		
	C	D	F
00	4.0(.157)	2.77(.109)	6.5(.256)
01	6.0(.236)	2.77(.109)	6.5(.256)

**Ordering Code**

**1** **2** **3** **4** **5** **6** **7** **8**  
**CH71 80 2 M 1 00 00 - NH**

**1** Series No.

**2** No. of Circuits: 04 to 80

**3** Plating Code: 2 = Gold flash over Nickel

**4** Tail Style: M = Straight SMT Type

**5** Insulator Material & Color:  
 1 = Nylon 6T, Color Black

**6** Other Options: 00 = Standard

\*See option code table

\*Consult manufacturer for customized pin length

**7** Packing: 00 = Without Pick & Place Pad (Tube)

0P = With Pick & Place Pad (Tape & Reel)

**8** -NH = For Lead Free soldering process and Halogen-Free