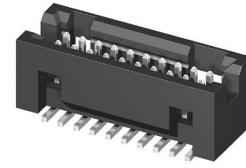
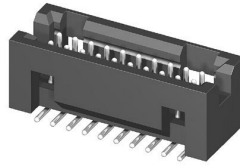
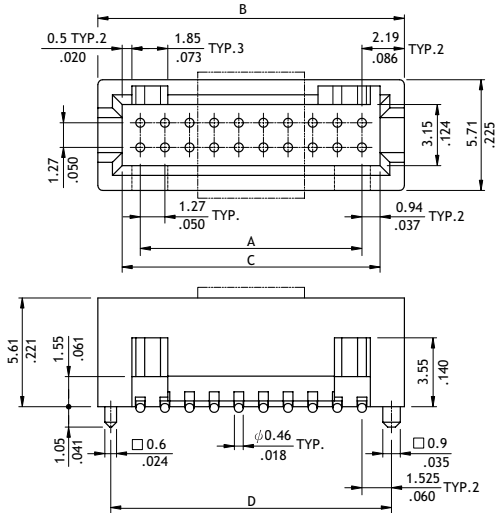


CHC2 Series 1.27mm(.050") Dual Row Pin Headers

☉ Mate with CBC1 series

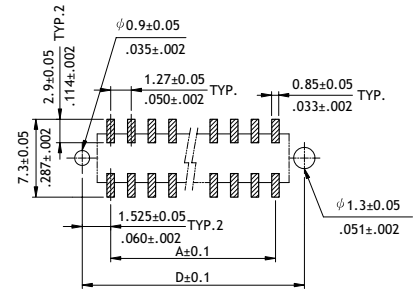
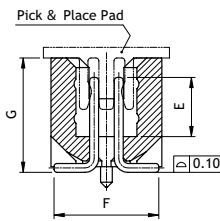


P/N CHC2***M1**-1*



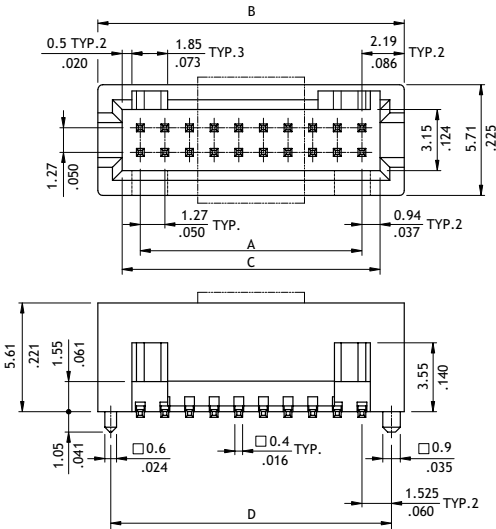
A = 1.27 X No. of Spaces
 B = A + 4.38
 C = A + 1.88
 D = A + 3.05

Option Code	Pin Dimension		
	E	F	G
00	3.05(.208)	5.4(.213)	5.9(.232)



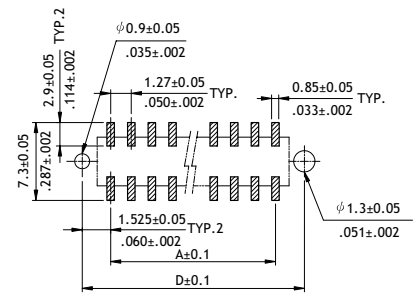
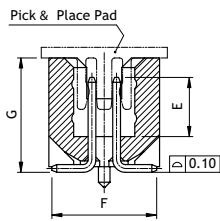
Recommended P.C. Board Layout

P/N CHC2***M1**-2*



A = 1.27 X No. of Spaces
 B = A + 4.38
 C = A + 1.88
 D = A + 3.05

Option Code	Pin Dimension		
	E	F	G
00	3.05(.208)	5.4(.213)	5.9(.232)



Recommended P.C. Board Layout

Ordering Code

1 CHC2 **2** X1 **3** 2 **4** M **5** 1 **6** 00 - **7** 1 **8** 0

- 1** Series No.
- 2** No. of Circuits: 10 to 100 (X1 = 100)
- 3** Plating Code: 2 = Gold flash over Nickel
- 4** Tail & Mounting Style: M = Vertical SMT Type
- 5** Insulator Material & Color: 1 = Nylon 6T, Color Black
- 6** Other Options: 00 = Standard

- 7** Pin Size:
 1 = 0.46mm Round Pin
 2 = 0.4mm Square Pin
- 8** Packing:
 0 = Without Pick & Place Pad (Tube)
 P = With Pick & Place Pad (Tape & Reel)

*See option code table

*Consult manufacturer for customized pin length

CH

PIN HEADER CONNECTORS