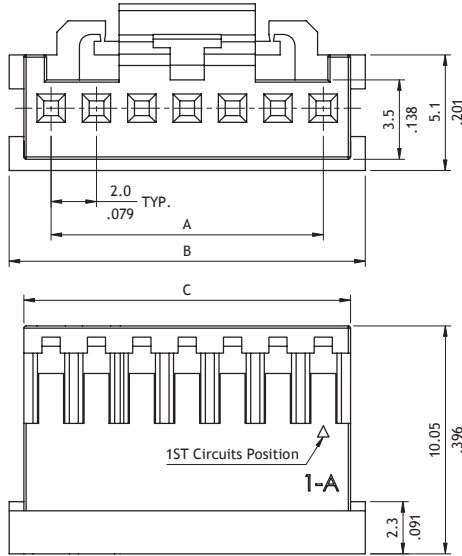
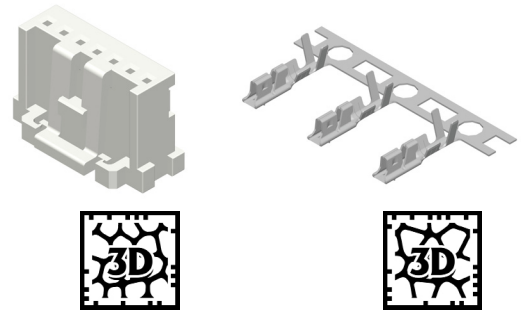
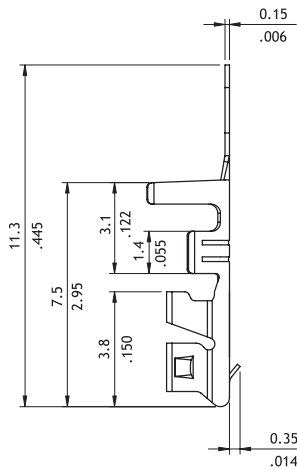
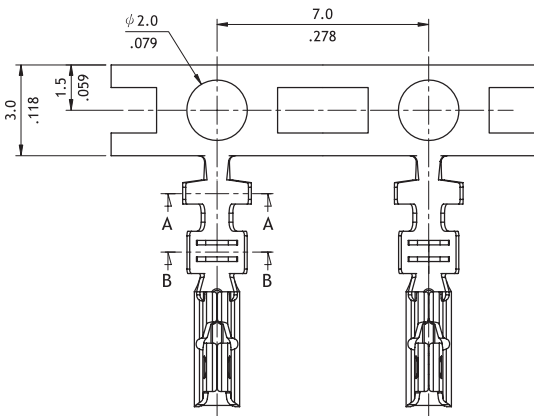
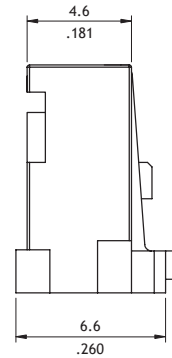


CI09 Series 2.00mm(.079") Wire to Board Connectors Housing & Terminal

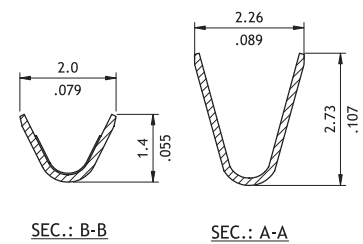
- Mate with CI09 Header
- Can be used CI09 Crimp Clip Terminal
- Insulator: Glass filled polyester UL 94V-0, Color Nature



A = 2.00 x NO. OF SPACES
 B = A + 3.70
 C = A + 2.40



Wire Range	Insulation Diameter	Reel Q'ty
AWG #22-#26	1.5 (.060) MAX.	8,000 PCS.



Ordering Code

1 CI09 **2** 10 **3** S **4** L **5** 00 **6** 0 - **7** NH

- 1** Series No.
- 2** Contact: 02 to 10
- 3** S = Housing
- 4** L = With Latch
- 5** Color: 00 = Nature
- 6** Other Options: 0 = Standard
- 7** -NH = Halogen-Free

1 CI09 **2** T01 **3** 1 **4** P **5** E **6** 0

- 1** Series No.
- 2** Type: T01 = AWG #22 ~ #26
- 3** Plating Code: 1 = Tin over plated
- 4** Material: P = Phosphor Bronze
- 5** Plating Method: E = Pre-tinned
- 6** Other Options: 0 = Standard