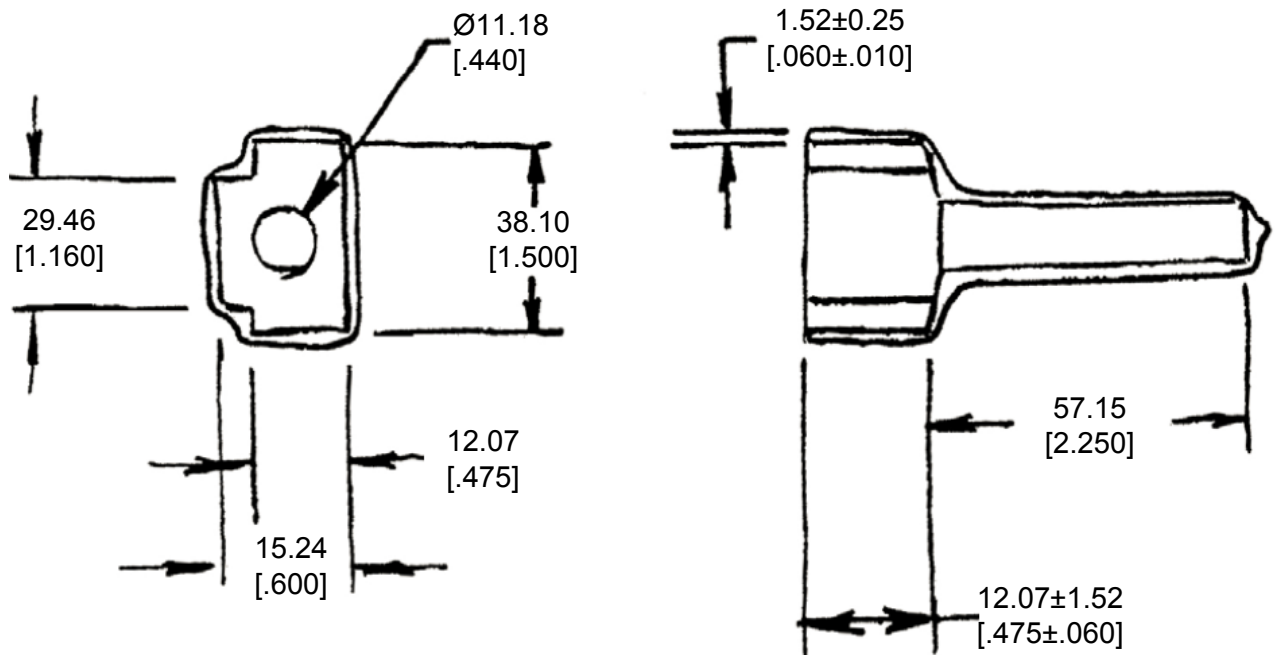


REVISIONS

P	LTR	DESCRIPTION	DATE	DWN	APVD
	A	NEW RELEASE PER ECO-14-010245	08-05-14	DM	DM



3. PART NO. DTM12S-BT-BK

2. TEMPERATURE RATING: -29°C TO +100°C [-20°F TO +212°F]

1. THIS PART IS USED ON DTM06-12SX (X=A,B,C,D KEYS) PLUG WITH ANY MODIFICATION THAT DOES NOT INCLUDE AN END CAP.


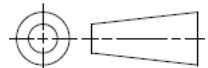
2014

RELEASED FOR PUBLICATION

THIS DRAWING IS UNPUBLISHED.

ALL RIGHTS RESERVED.

© COPYRIGHT 2014 BY TE CONNECTIVITY

DIMENSIONS: MM [INCH]		DWN D. MEYER 07JUL2014	MATERIAL PVC		FINISH BLACK	
TOLERANCES UNLESS OTHERWISE SPECIFIED: 0 PLC ± 1 PLC ± 2 PLC ± 0.63 [.025] 3 PLC ± 4 PLC ± ANGLES ± 5°		CHK B. MILLIGAN 07JUL2014	 TE Connectivity			
		APVD D. MEYER 07JUL2014				
		PRODUCT SPEC	NAME BOOT, PLUG, 12PIN DTM SERIES			
		APPLICATION SPEC				
		SIZE A 4	CAGE CODE 4AFU8	DRAWING NO C - DTM12S-BT-BK	RESTRICTED TO -	
		WEIGHT 8.00 g				
		Customer Drawing			SCALE NONE	SHEET 1 OF 1 REV A