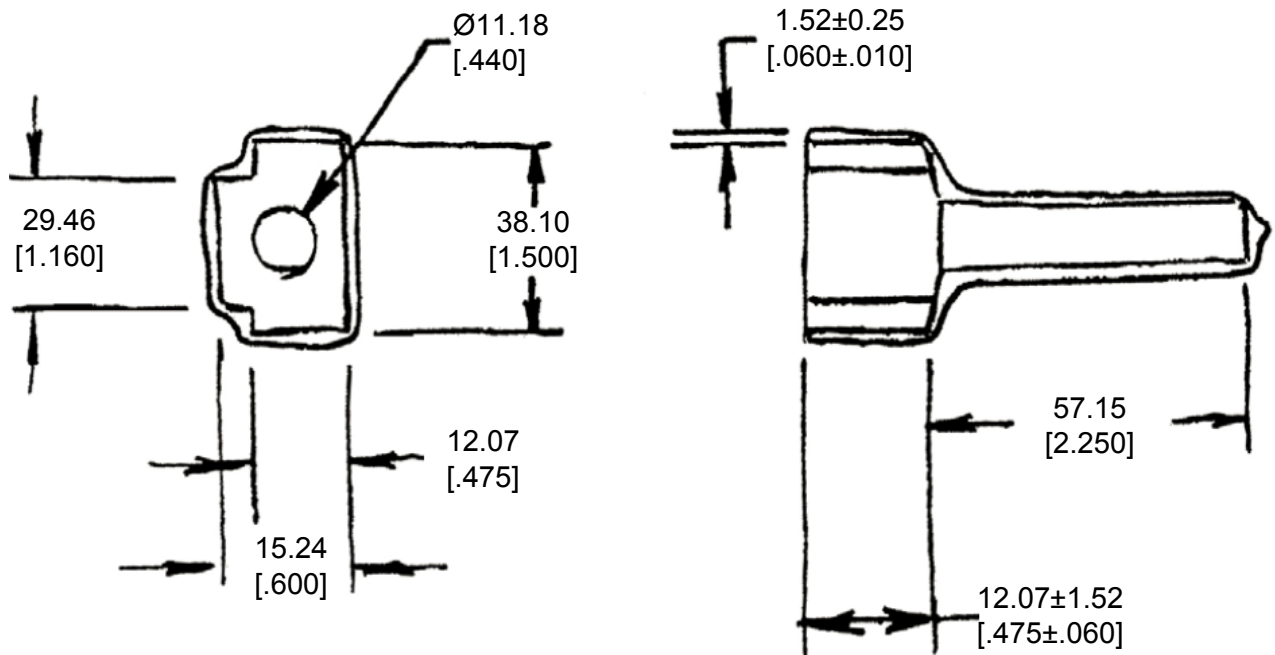


## REVISIONS


P	LTR	DESCRIPTION	DATE	DWN	APVD
	A	NEW RELEASE PER ECO-14-010245	08-05-14	DM	DM



3. PART NO. DTM12S-BT

2. TEMPERATURE RATING: -29°C TO +100°C [-20°F TO +212°F]

1. THIS PART IS USED ON DTM06-12SX (X=A,B,C,D KEYS) PLUG WITH ANY MODIFICATION THAT DOES NOT INCLUDE AN END CAP.

DIMENSIONS: <b>MM [INCH]</b>	DWN	D. MEYER 07JUL2014	MATERIAL	PVC	FINISH	GRAY				
	CHK	B. MILLIGAN 07JUL2014	 <b>TE</b> Connectivity							
TOLERANCES UNLESS OTHERWISE SPECIFIED:	APVD	D. MEYER 07JUL2014								
0 PLC ±	PRODUCT SPEC	NAME <b>BOOT, PLUG, 12PIN DTM SERIES</b>								
1 PLC ±	APPLICATION SPEC									
2 PLC ± 0.63 [0.025]	WEIGHT	8.00 g	SIZE	A 4	CAGE CODE	4AFU8	DRAWING NO	C - DTM12S-BT	RESTRICTED TO	-
3 PLC ±	Customer Drawing		SCALE	NONE	SHEET	1	OF	1	REV	A
4 PLC ±										
ANGLES ± 5°										