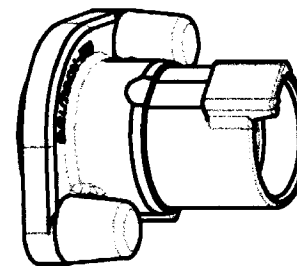
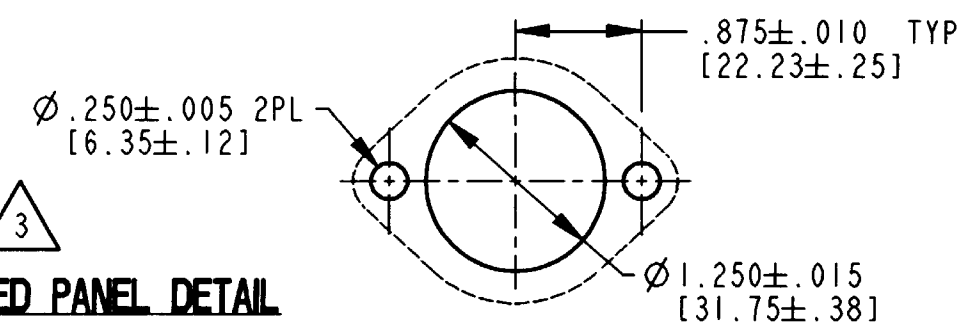
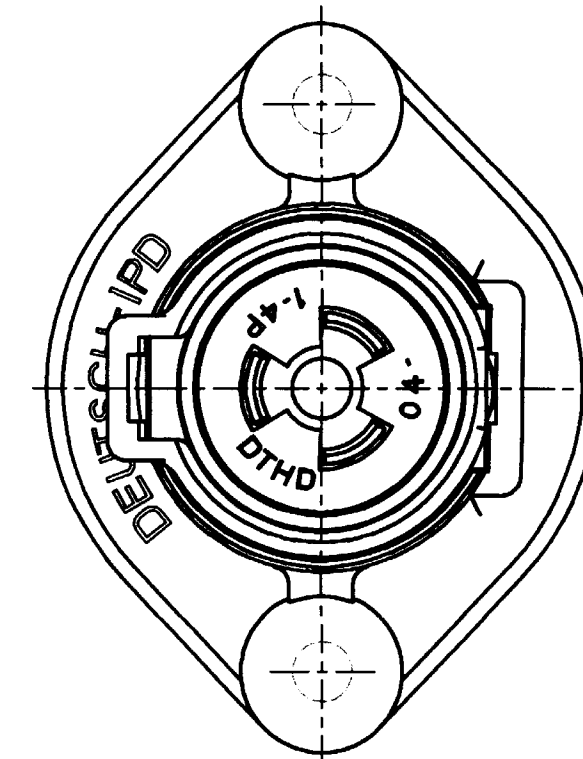
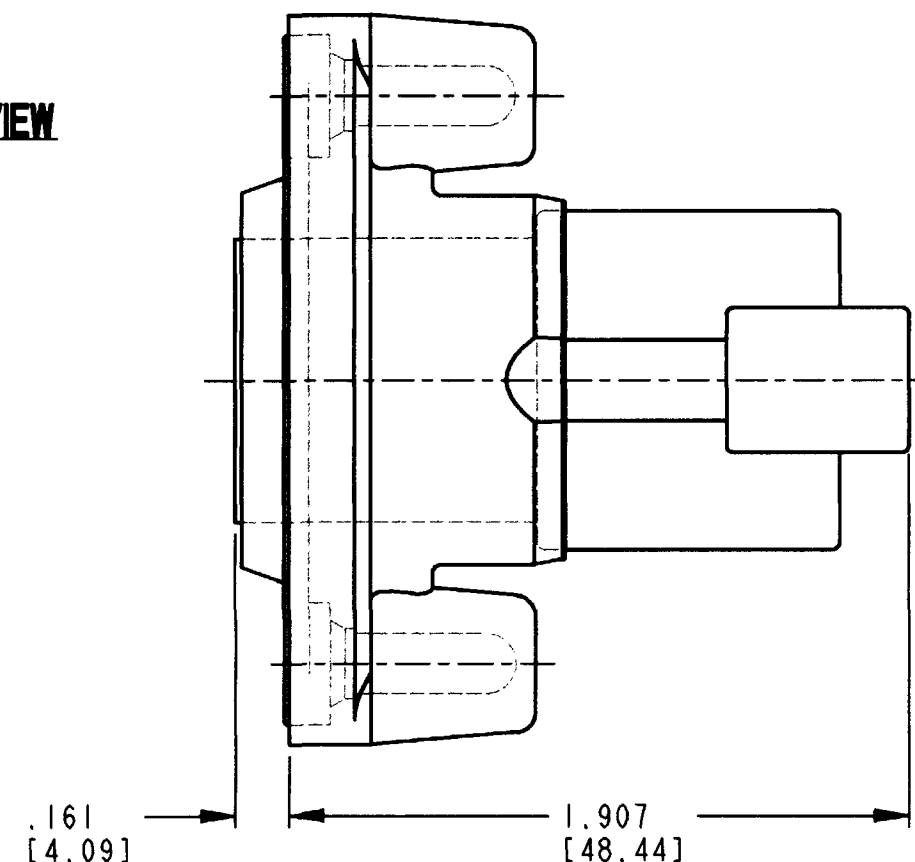
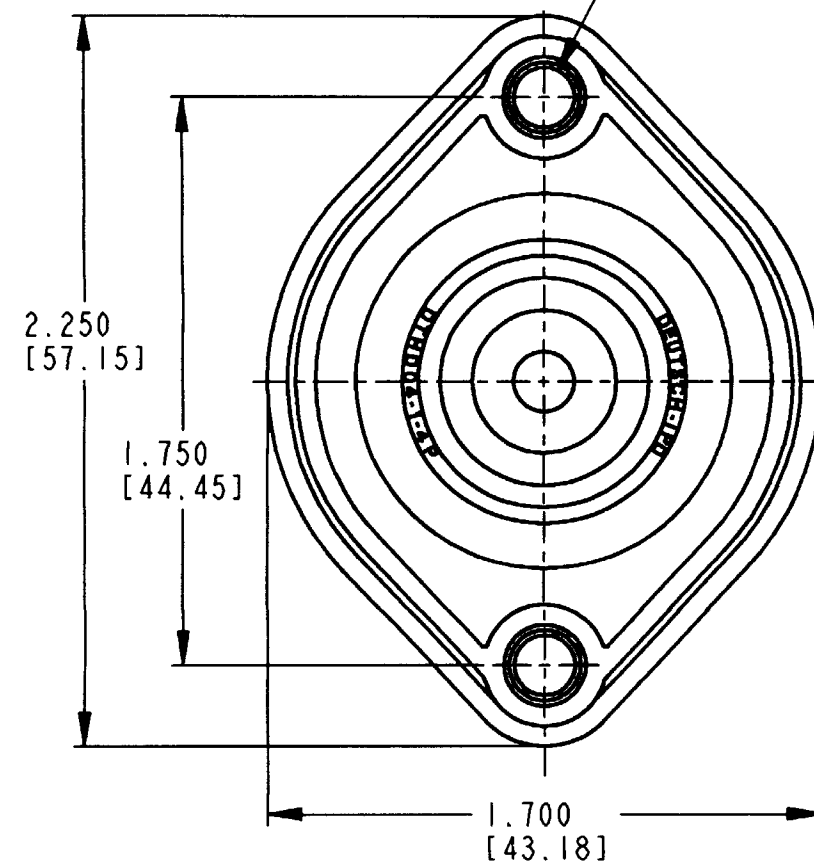



FOR 5mm OR #10  
THREAD FORMING  
SCREW.  
(NOT INCLUDED)




**ISOMETRIC VIEW**



6. THIS RECEPTACLE MATES WITH DTHD06-1-4S-\*\*\*\* PLUG  
(\*\*\*\* = ALL MODIFICATIONS).
5. FOR CONTACT INFORMATION, SEE ENVELOPE DRAWING 0425-205-0000.  
FOR FURTHER INFORMATION CONTACT FACTORY.
4. FLANGE SEAL TO BE SPLASH PROOF ONLY.
3.  PANEL TO BE FLAT AND FREE FROM BURRS OR SHARP EDGES.
2. ALL DIMENSIONS ARE INCHES [MILLIMETERS].
1. ALL DIMENSIONS ARE  $\pm .025$  [ $\pm .63$ ], UNLESS OTHERWISE SPECIFIED.

NOTES:

REV	DTHD04-14P-L013	REVISIONS			
B		SYM	DESCRIPTION	DATE	APPROVED
		NC	NEW RELEASE PER E.O. A14649	10/28/94	R.D.R.
		A	REVISED PER E.O. P15275	04/03/97	R.D.R.
		B	REDRAWN & REVISED PER E.O. P16109	5/12/99	

	SIGNATURE & DATE		RECEPTACLE FLANGE MOUNT -L013 MOD DTHD SERIES  ENVELOPE	CP		MATERIAL CODE	
DR	J. HAYNES 05/12/99			 <b>The Deusch Company</b> DEUTSCH I.P.D. 3850 INDUSTRIAL AVE. HEMET, CALIF. 92545	<b>B</b>	<b>DTHD04-14P-L013</b>	
CHK	[Signature] 5/12/99						
PE	[Signature] 5/17/99						
APPD	[Signature] 5/12/99						
SCALE	NONE	WT		DWG SIZE	CODE JUL 99	SHEET	OF