

THIS DRAWING IS UNPUBLISHED

RELEASED FOR PUBLICATION

2014

© COPYRIGHT 2013

BY TE CONNECTIVITY

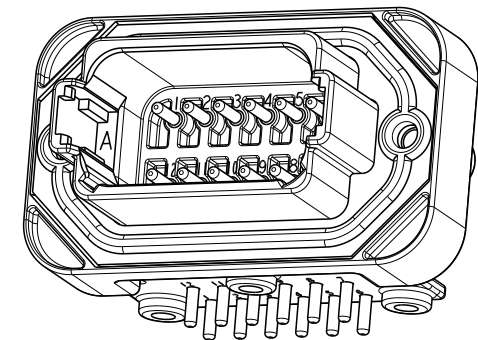
ALL RIGHTS RESERVED.

LOC

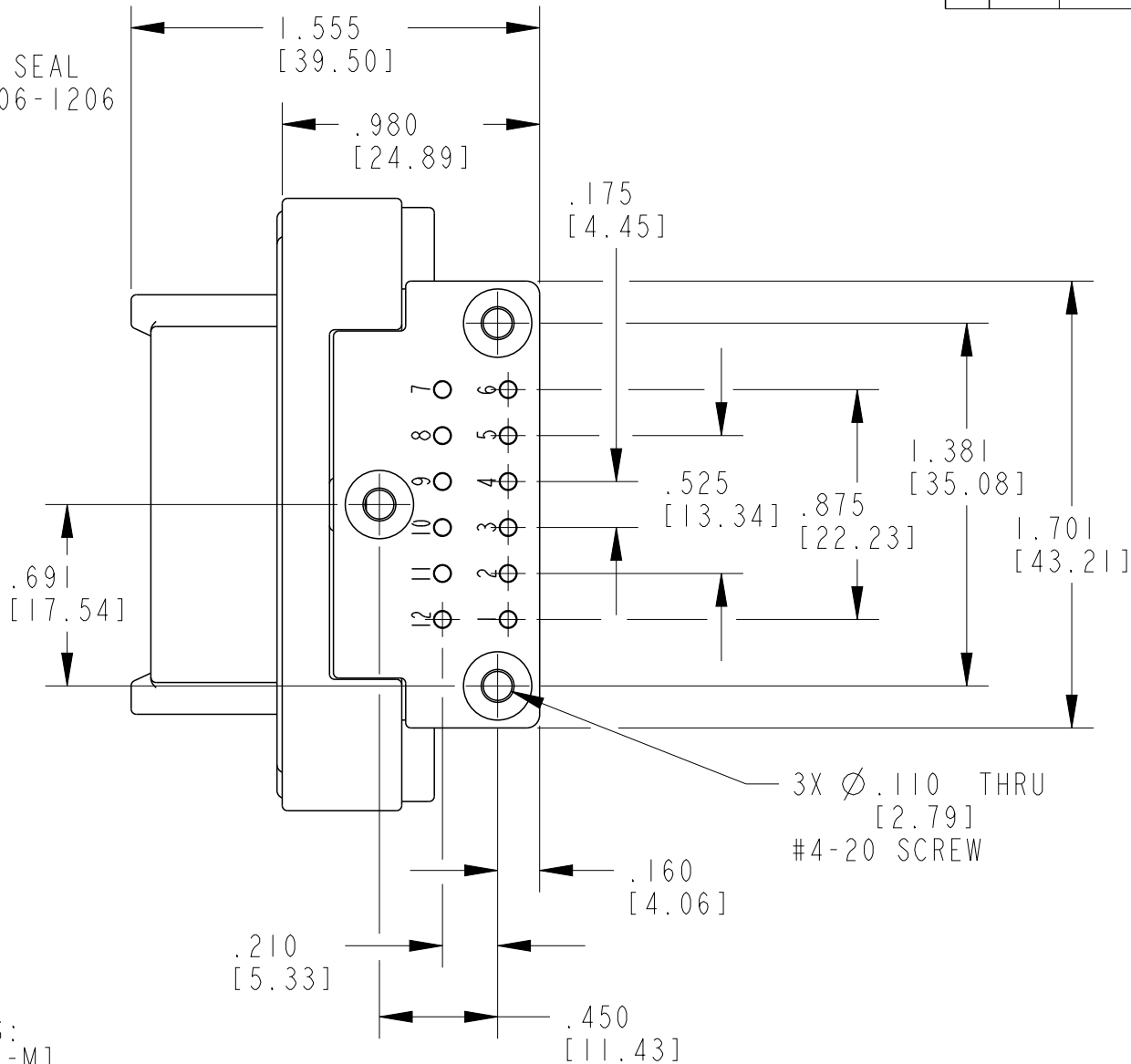
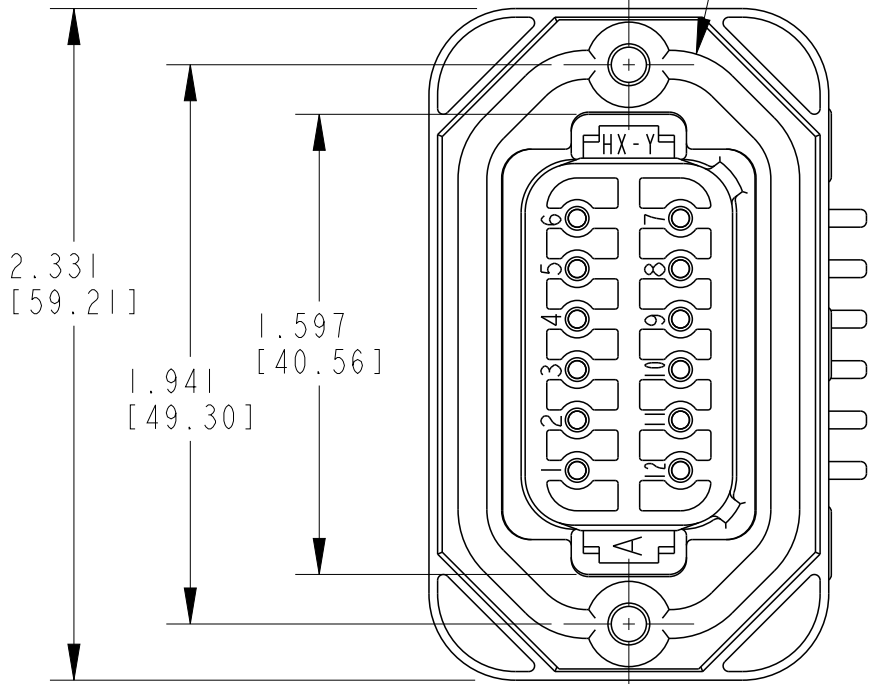
DIST

REVISIONS

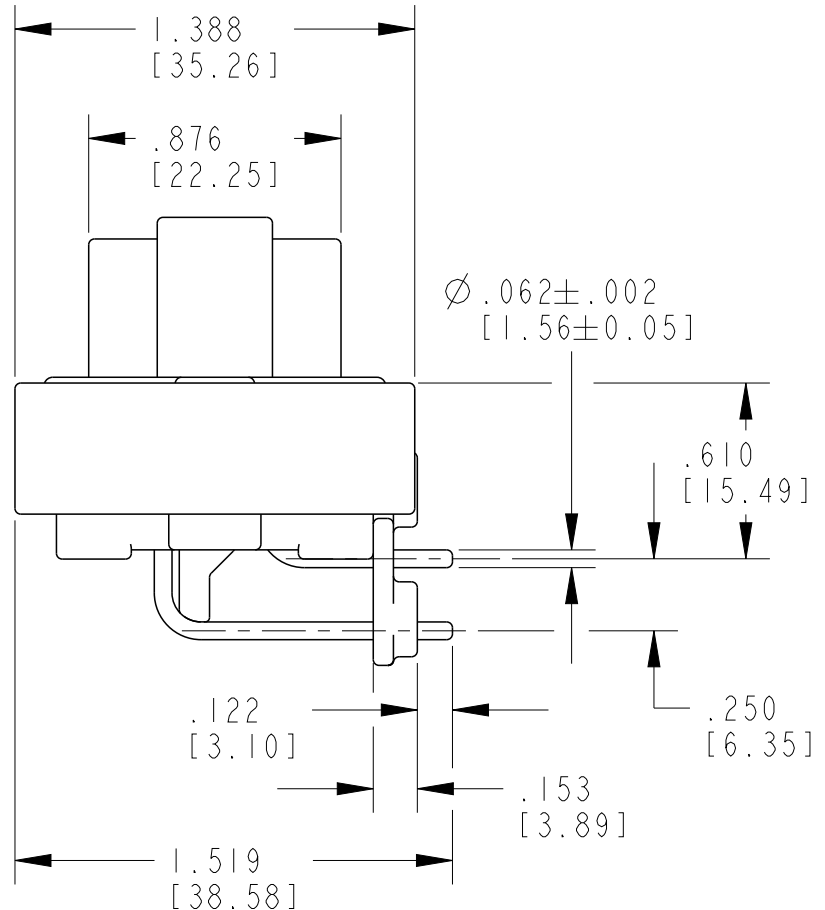
P	LTR	DESCRIPTION	DATE	DWN	APVD
	A	REVISED PER E.O. P18332	9-29-03		RDR
	B	REVISED PER E.O. P19196	6-13-06		RDR
	C	REVISED PER E.O. P21065	8-26-11		RDR
	C1	REVISED PER ECO-14-010107	03JUL2014	JA	DM



FLANGE SEAL
1010-006-1206



3X Ø.110 THRU
[2.79]
#4-20 SCREW



6. MOUNTING SCREW TORQUE VALUES ARE AS FOLLOWS:
#6-19 SCREWS: 13±2.0 IN-LB [1.47±0.23 N-M].
#4-20 SCREWS: 8±2.0 IN-LB [.90±0.23 N-M].
VALUES VALID FOR PLASTITE 48 SCREWS ONLY.

5. RECOMMENDED MOUNTING SCREWS (NOT INCLUDED): CAMCAR PLASTITE 48, SINGLE HELIX.

4. THIS RECEPTACLE MATES WITH DT06-12S* PLUG (X = A,B,C,D KEYS, XXXX = ALL MODIFICATIONS).

3. CONTACT PLATING - MATING SIDE: NICKEL; PCB SIDE: TIN

2 MATERIALS:
SHELL: PA GF30
SEAL: SILICONE (ORANGE-RED)
PIN CONTACTS: COPPER ALLOY

1 DIMENSION TOLERANCE: ±.025 [.64]
PANEL CUTOUT: ±.010 [.25]
PIN LOCATIONS: ±.005 [.13]
MOUNTING HOLE LOCATIONS: ±.010 [.13]

NOTES:

THIS DRAWING IS A CONTROLLED DOCUMENT.

DWN P.BURKE 06JUN2001

CHK KEVIN MCKEE 03JUL2014

APVD DAVID MEYER 03JUL2014

PRODUCT SPEC

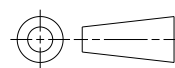
APPLICATION SPEC

WEIGHT 41g±10%

CUSTOMER DRAWING

DIMENSIONS:
INCHES[mm]

TOLERANCES UNLESS
OTHERWISE SPECIFIED:



0 PLC ±
1 PLC ±
2 PLC ±
3 PLC ±
4 PLC ±
ANGLES ±0°30'0"

MATERIAL



FINISH



TE Connectivity

NAME
RECEPTACLE HEADER
12 PIN 90 DEG
DT SERIES

SIZE CAGE CODE DRAWING NO RESTRICTED TO

A3 4AFU8 C-DT13-12PX

SCALE 3:2 SHEET 1 OF 2 REV C1

