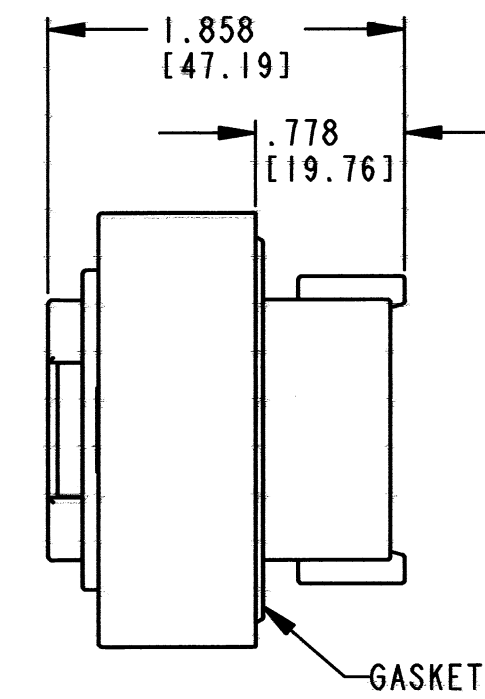
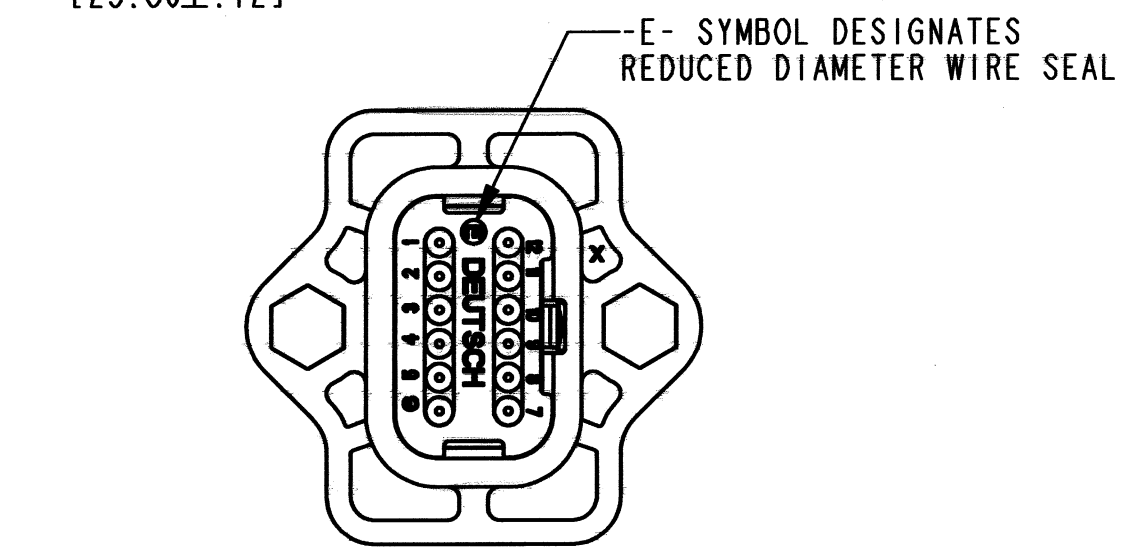
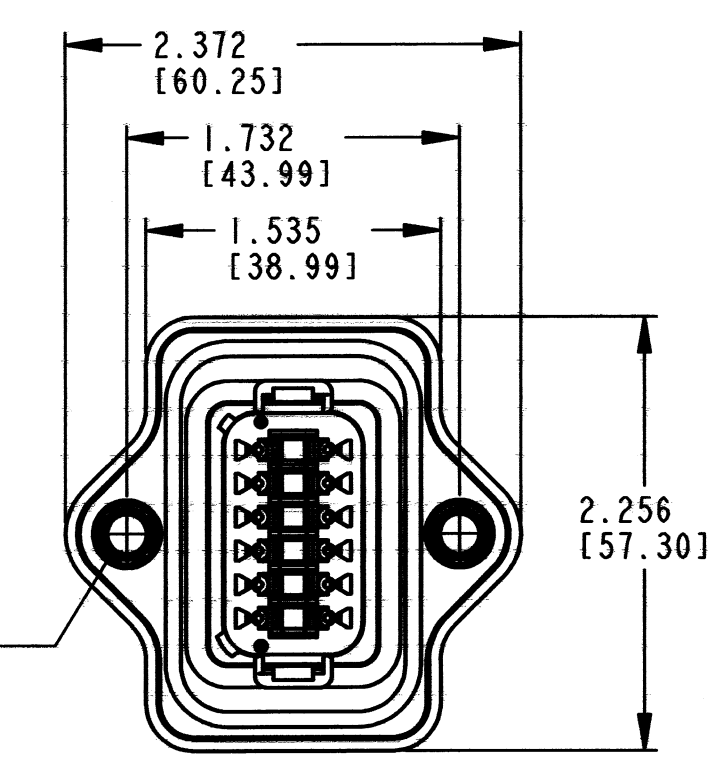


RECOMMENDED MOUNTING  
DETAIL



THREADED INSERT  
M6 X .500 DEEP  
RECOMMENDED TORQUE:  
62-88 IN-LB [7-10 N-m]  
2 PLACES



REV  
**B** DT04-12PA-LE06

REVISIONS			
SYM	DESCRIPTION	DATE	APPROVED
NC	NEW RELEASE PER E.O. A14567	3/14/94	J.A.
A	REVISED PER E.O. P21099	9/23/11	R.D.R.
B	REVISED PER E.O. P21406	7-6-12	RDR

CONTACT SIZE	MIN. INSUL. O.D.	MAX. INSUL. O.D.	WIRE RANGE REF ONLY
16	.053 [1.35]	.120 [3.05]	14-20 AWG [2.0-0.5]

- NOTES:
1. DIMENSIONS ARE IN INCHES [MILLIMETER].
  2. DIMENSIONS ARE ±.025 [0.64] UNLESS OTHERWISE SPECIFIED.
  3. FOR CONTACTS AND WIRE PERFORMANCE AND APPLICATION CHARACTERSTICS, SEE ENVELOPE DRAWINGS 0425-015-0000 AND 0425-017-0000.
  4. THIS RECEPTACLE MATES WITH DT06-12SA-\*\*\*\* PLUG.  
( \*\*\*\* = ALL MODIFICATIONS )  
CONSULT FACTORY FOR MODIFICATIONS.
  5. MATERIAL: SHELL: PLASTIC; SEAL & GASKET: RUBBER;  
INSERT: STAINLESS STEEL.

SIGNATURE & DATE	
DR	C. WOODRUFF 14MAR94
CHK	D. B. 7/6/2012
PE	H. 7/5/12
APPD	S. 7/5/12
SCALE	NONE
WT	

12 WAY RECEPTACLE  
FLANGE MOUNT  
THIN WALL WIRE SEAL  
COLOR: GRAY  
D.T. SERIES

ENVELOPE

EP	MATL. CODE
3850 INDUSTRIAL AVE. HEMET, CA 92545	
<b>B</b>	DT04-12PA-LE06
DWG SIZE	CODE 11139 SHEET   OF