
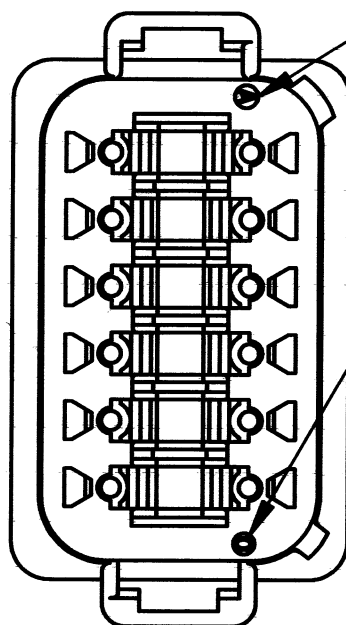
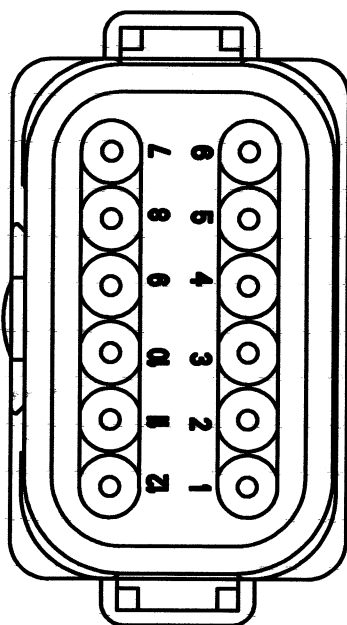
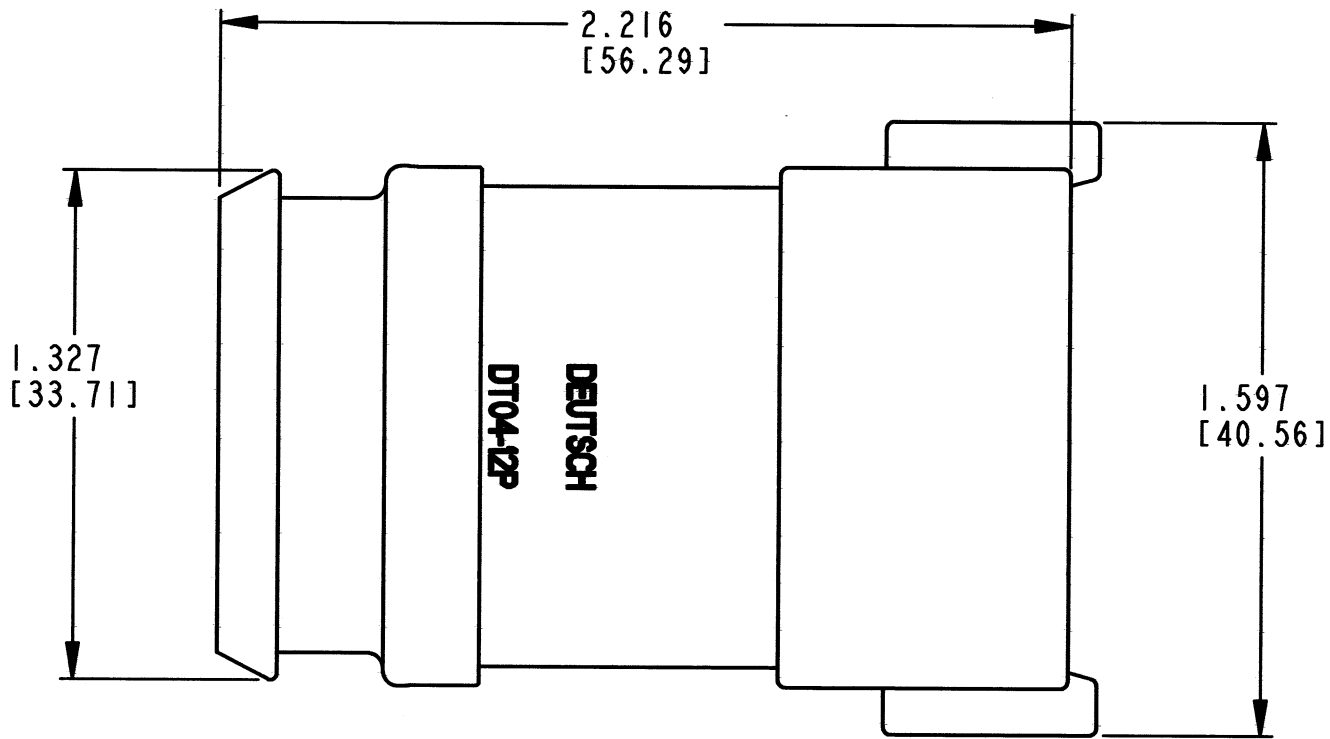
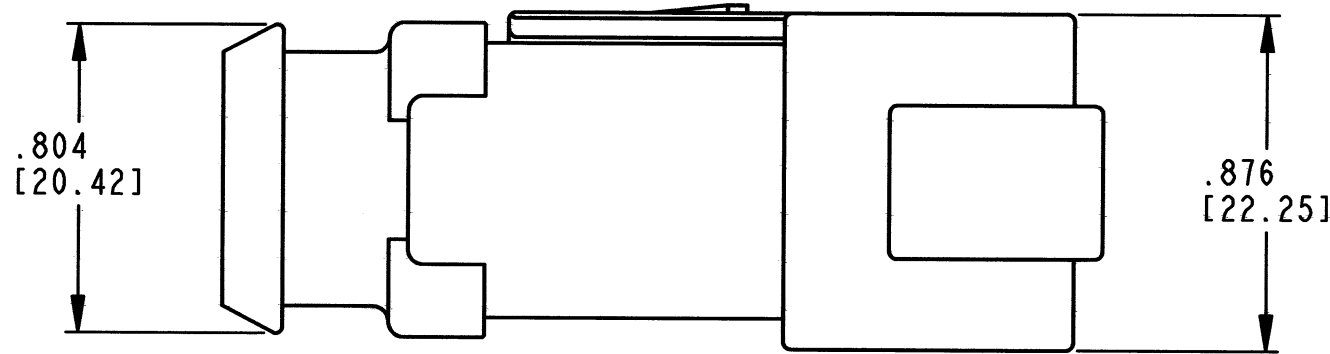



REV
B DT04-12PA-E008

REVISIONS			
SYM	DESCRIPTION	DATE	APPROVED
NC	NEW RELEASE PER E.O. PI5592	4/29/98	R.D.R.
A	REVISED PER E.O. PI8218	7/3/03	R.D.R.
B	REVISED PER E.O. P20949	7-7-11	ADR

CONTACT SIZE	MIN. INSUL. O.D.	MAX. INSUL. O.D.	WIRE RANGE 
16	.088 [2.23]	.145 [3.68]	14-20 AWG [2.0-0.5mm ²]

DATE CODE: MONTH IS REPRESENTED BY SEQUENTIAL ALPHA CHARACTERS. EX: A = JANUARY
YEAR IS REPRESENTED BY LAST NUMERICAL DIGIT. EX: 0 = 2010




5. MATERIAL: SHELL: PLASTIC; GROMMET: RUBBER
4. THIS RECEPTACLE MATES WITH THE DT06-12SA-**** PLUG.
(**** = ALL MODIFICATIONS) CONSULT FACTORY FOR MODIFICATIONS.
-  3. FOR CONTACTS AND WIRE PERFORMANCE AND CHARACTERISTICS, SEE ENVELOPE DRAWINGS 0425-015-0000 AND 0425-017-0000.
2. ALL DIMENSIONS ARE $\pm .025$ [.64] UNLESS OTHERWISE SPECIFIED.

NOTES: 1. ALL DIMENSIONS ARE IN INCHES [MILLIMETERS].

SIGNATURE & DATE	
DR	R MESSENGER 6/3/11
CHK	B. Byford 7/6/2011
PE	R. Messinger 6/8/11
APPD	S. Beuer 6/29/11
SCALE	2:1
WT	

12 WAY RECEPTACLE
-E008 MOD
KEY ARR. -A-
COLOR: GRAY
DT SERIES

ENVELOPE

EP	MATL. CODE
 3850 INDUSTRIAL AVE. HEMET, CA 92545	
DEUTSCH INDUSTRIAL	
B	DT04-12PA-E008
DWG SIZE	CODE 11139 SHEET 1 OF 1