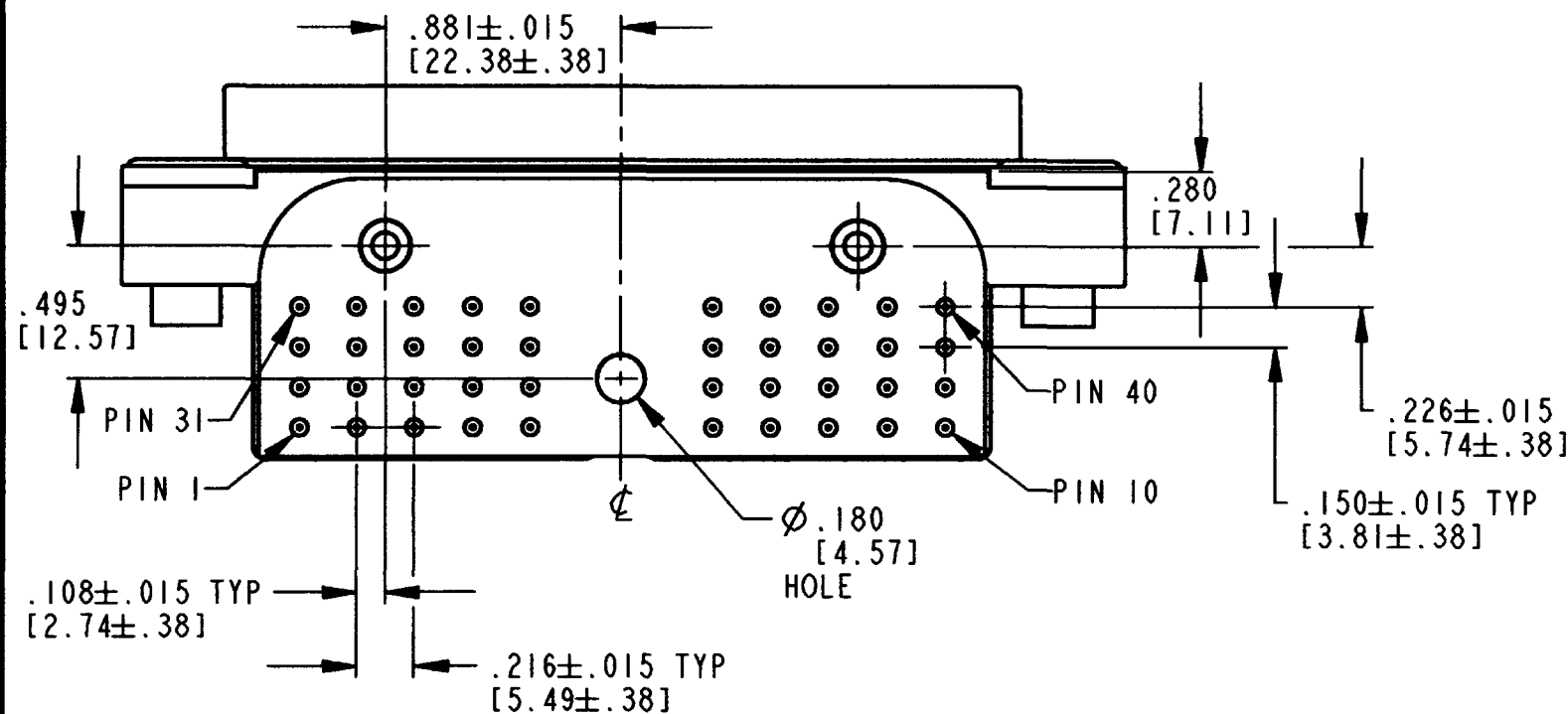
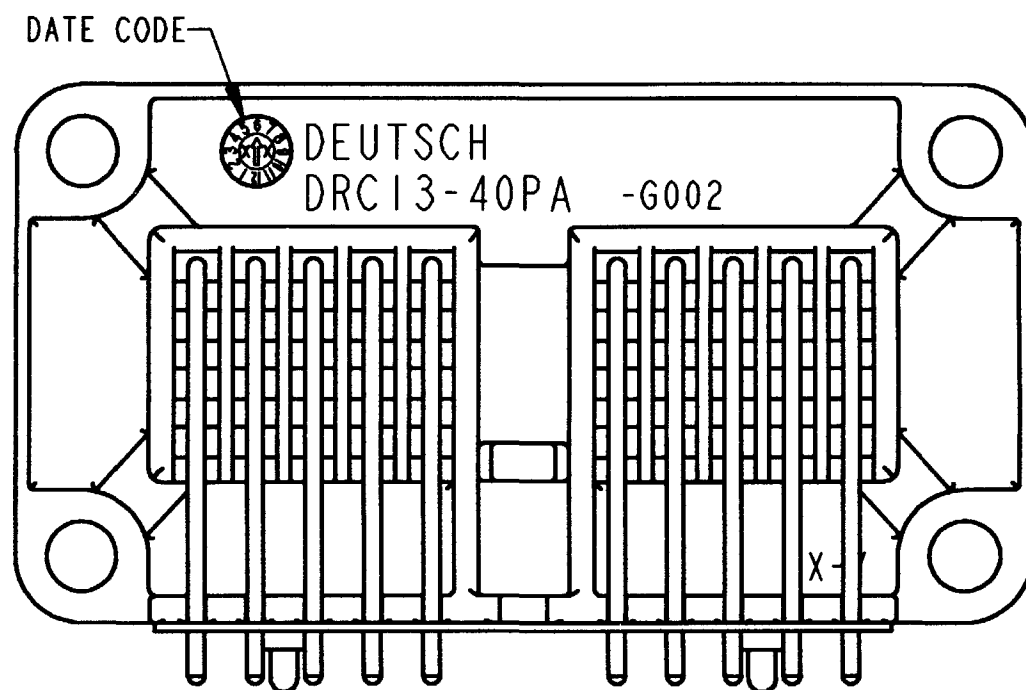
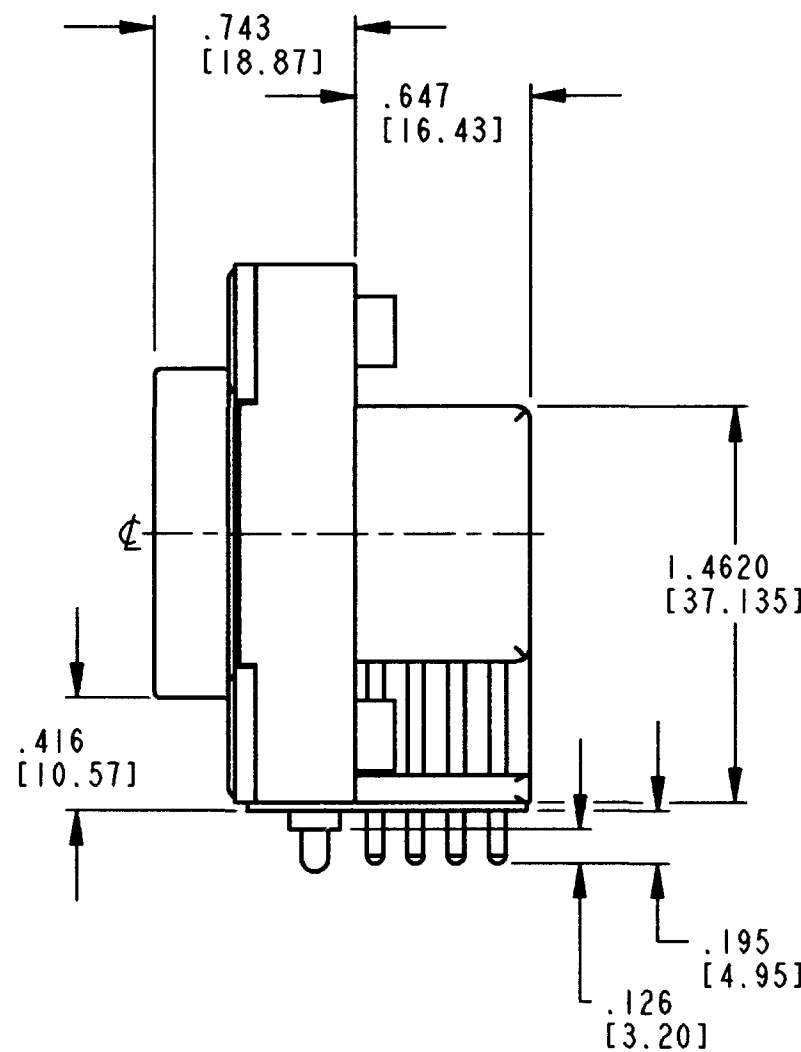
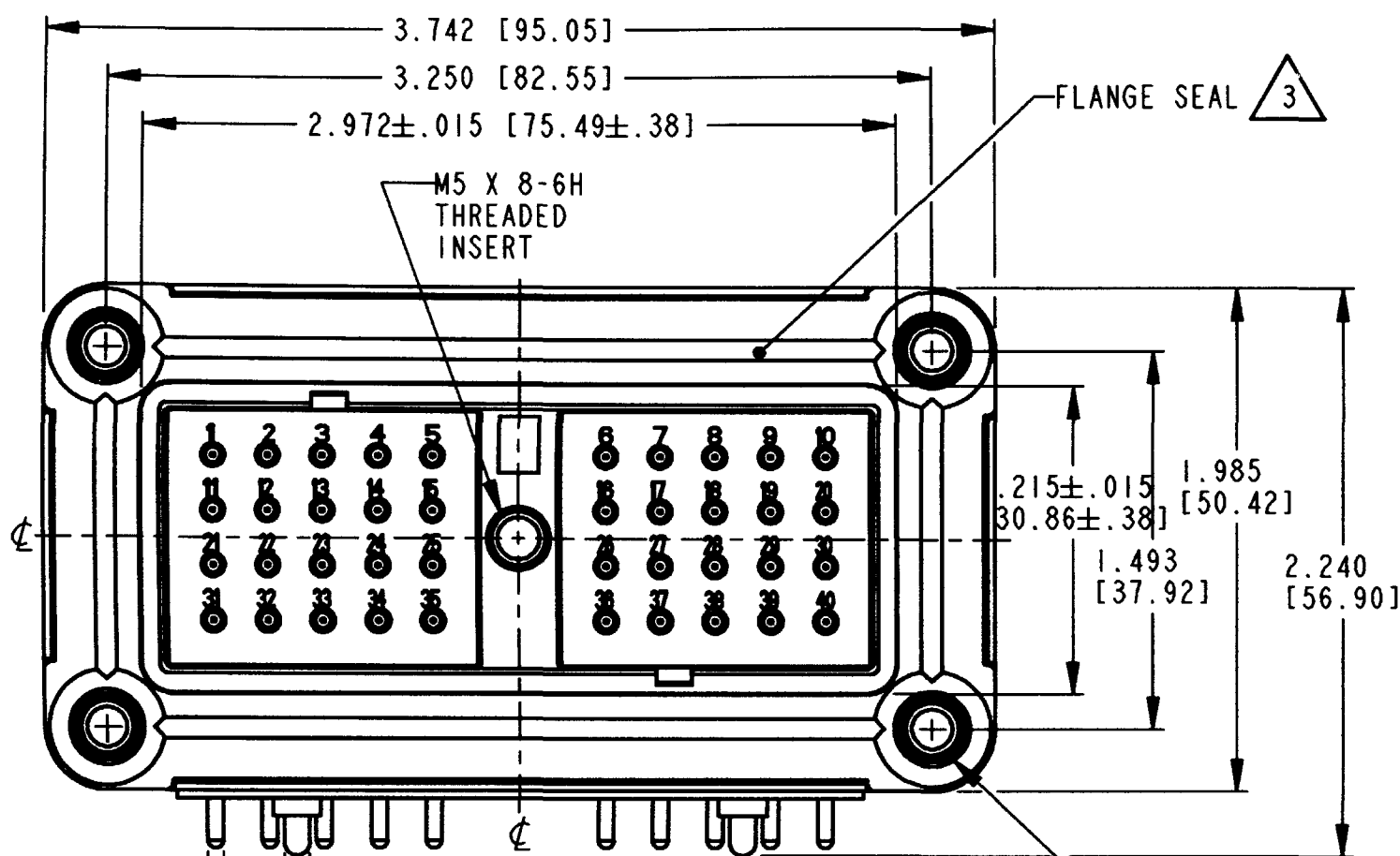


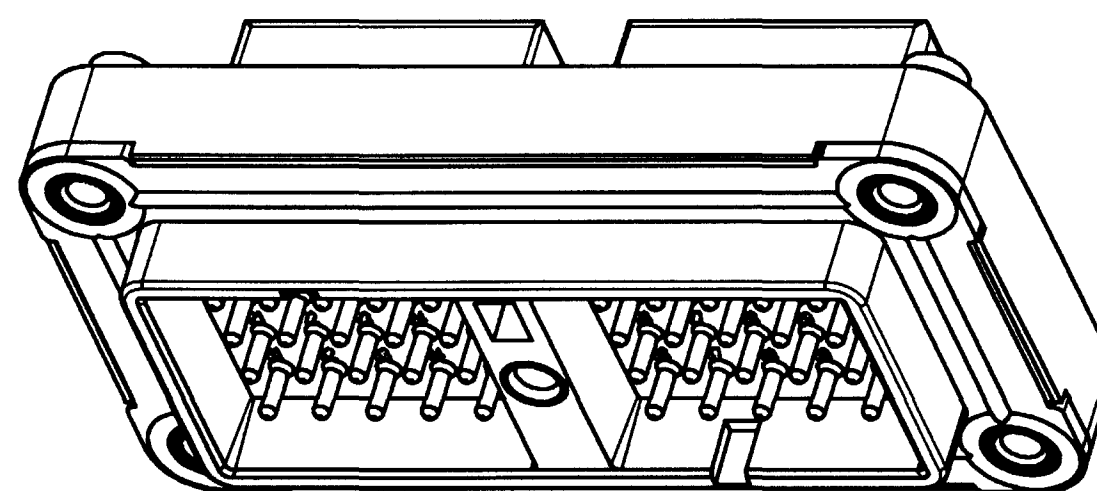
REV
A DRC13-40P*-G002

REVISIONS			
SYM	DESCRIPTION	DATE	APPROVED
NC	NEW RELEASE PER E.O. P17162	4-4-01	R.D.R.
A	REVISED PER E.O. P18693	9-20-04	RDR



11. PART MODIFICATION.
10. SURFACE FINISH: 32 RMS OR BETTER; \square .005 [0.12].
9. RECOMMENDED SCREW: #10-32UNF-2A THREAD MACHINE SCREW TORQUE: 20-25 IN-LB [2.26-2.83 NM].
8. SEE SHEET 2 FOR OTHER KEY ARRANGEMENTS.
7. THIS RECEPTACLE MATES WITH DRC16-40S(E)-**** & DRC18-40S*-**** PLUG (*=A,B,C,D KEYS; ****=ALL MODIFICATIONS).
6. CONTACT PLATING - MATING SIDE: TIN; PCB SIDE: 1, 10, 11, 20, 21, 30, 31 & 40 GOLD, REST: TIN.
5. MATERIAL - PLASTIC (BLACK); INSERTS: STEEL/BRASS; SEAL: RUBBER.
4. RECEPTACLE IS SUPPLIED WITH DUST CAP (NOT SHOWN).
3. FLANGE SEAL (0513-014-4006) IS SHIPPED WITH RECEPTACLE.
2. DIMENSION TOLERANCE: \pm .025 [0.64]; PANEL CUTOUT: \pm .010 [0.25].
1. DIMENSIONS ARE IN INCHES [mm].

NOTES: UNLESS OTHERWISE SPECIFIED

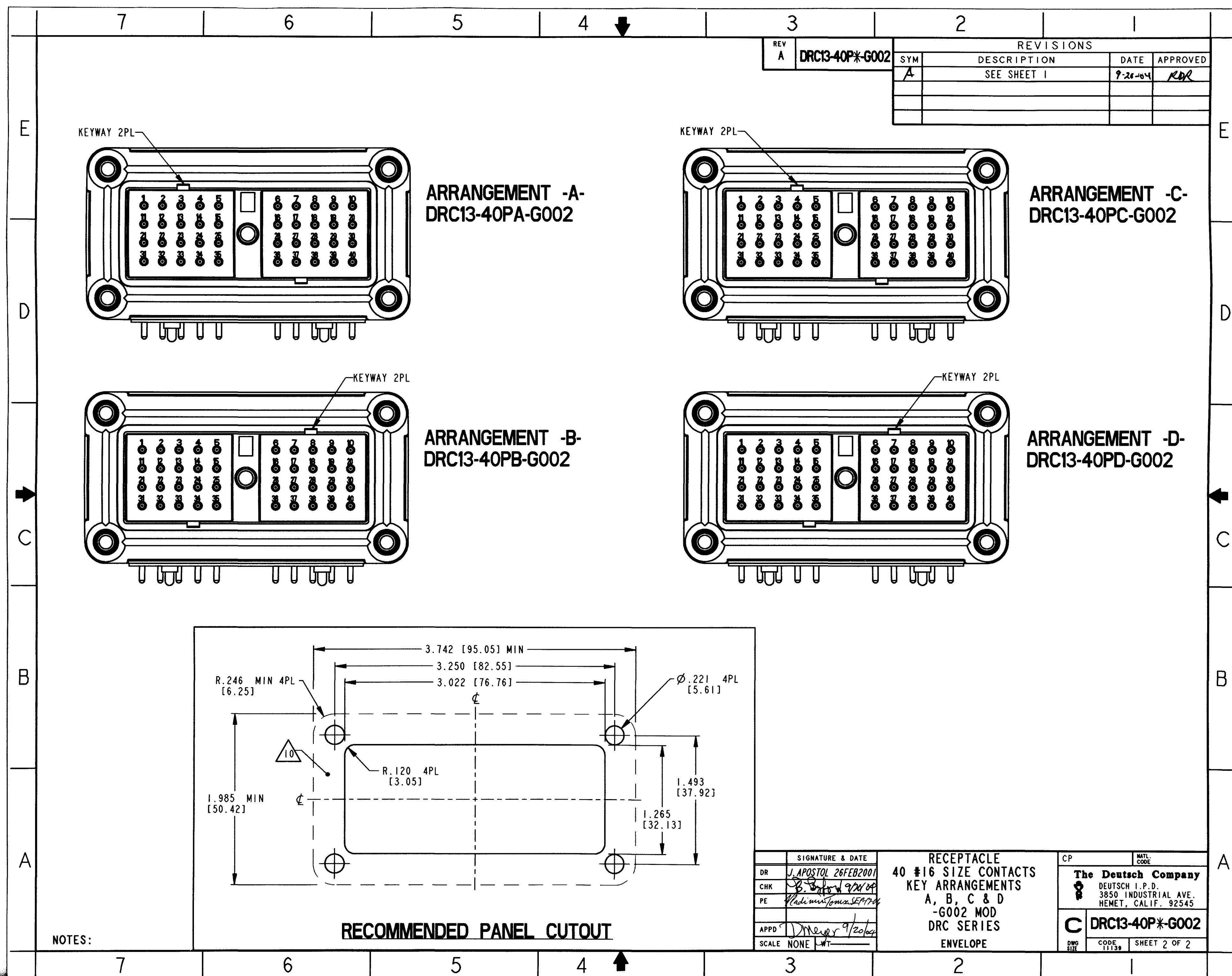


3D VIEW

SIGNATURE & DATE	
DR	J. APOSTOL 26 FEB 2001
CHK	B. J. 9/20/04
PE	W. J. 9/20/04
APPD	D. Meyer 9/20/04
SCALE	NONE

RECEPTACLE
40 #16 SIZE CONTACTS
KEY ARRANGEMENTS
A, B, C & D
-G002 MOD
DRC SERIES
ENVELOPE

CP	MATL. CODE
The Deutsch Company DEUTSCH I.P.D. 3850 INDUSTRIAL AVE. HEMET, CALIF. 92545	
C DRC13-40P*-G002	
DWG. SIZE	CODE 11139 SHEET 1 OF 2



REV		REVISIONS			
A	DRC13-40P*-G002	SYM	DESCRIPTION	DATE	APPROVED
		A	SEE SHEET 1	9-26-04	RDR

NOTES:

RECOMMENDED PANEL CUTOUT

SIGNATURE & DATE		RECEPTACLE		CP	
DR	J. APOSTOL 26 FEB 2001	40 #16 SIZE CONTACTS KEY ARRANGEMENTS A, B, C & D -G002 MOD DRC SERIES ENVELOPE		MATERIAL CODE	
CHK	B. B. 9/20/04			The Deutsch Company DEUTSCH I.P.D. 3850 INDUSTRIAL AVE. HEMET, CALIF. 92545	
PE	W. L. 10/10/04				
APPD	D. M. 9/20/04			C DRC13-40P*-G002	
SCALE	NONE			DWG SIZE	CODE 11139 SHEET 2 OF 2