

2014

RELEASED FOR PUBLICATION

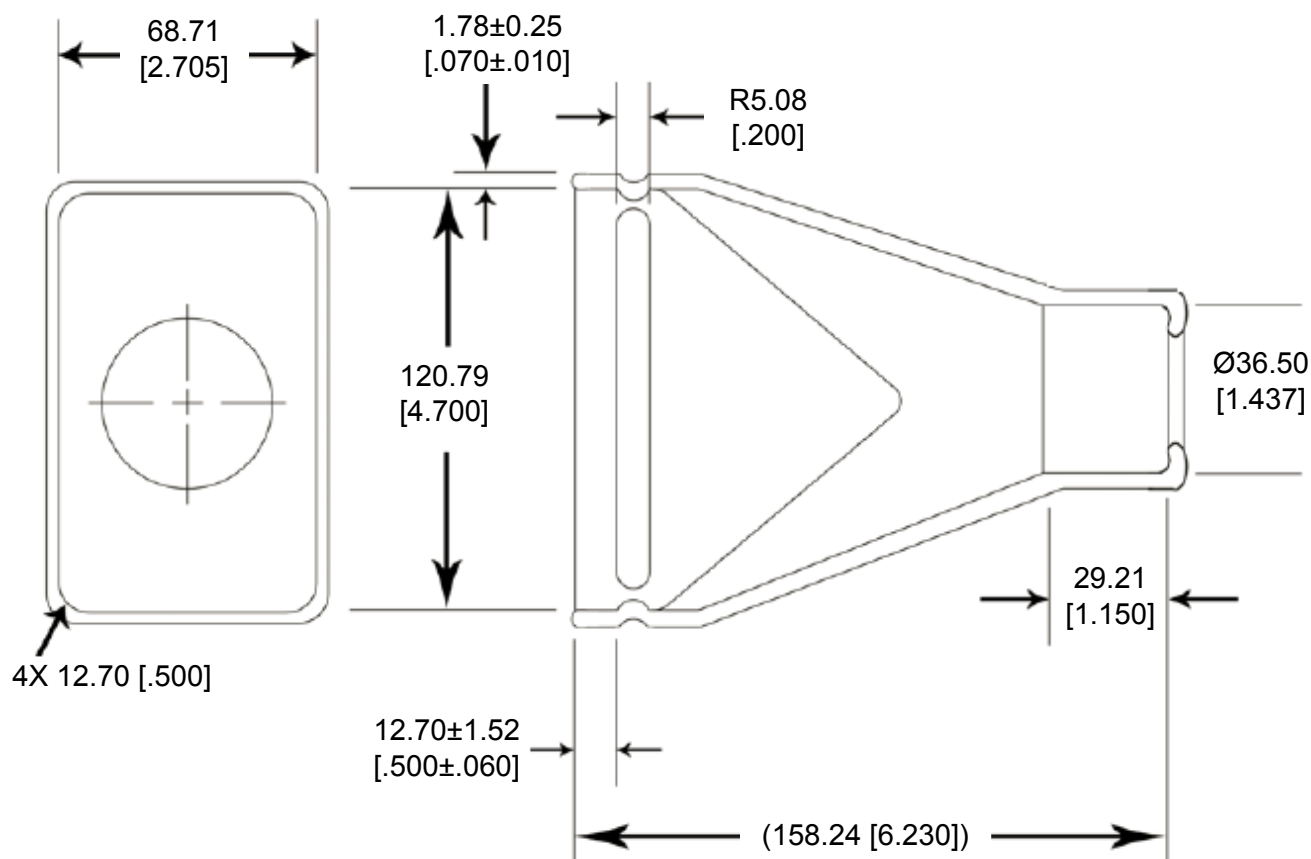
ALL RIGHTS RESERVED.

COPYRIGHT 2014 BY TE CONNECTIVITY

THIS DRAWING IS UNPUBLISHED.

## REVISIONS

P	LTR	DESCRIPTION	DATE	DWN	APVD
	A	NEW RELEASE PER ECO-14-009834	06-28-14	DM	DM



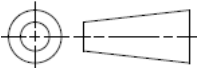

3. PART NO. DRB102-BT

2. TEMPERATURE RATING: -29°C TO +100°C [-20°F TO +212°F]

1. THIS PART IS USED ON

- DRB12-102PX(N)E-XXXX RECEPTACLE
- DRB16-102SXE-XXXX PLUG
- DRB12-128PX(N)E-XXXX RECEPTACLE
- DRB16-128SXE-XXXX PLUG

WHERE X=A,B,C,D KEYS AND XXXX=MODIFICATION

DIMENSIONS: MM [INCH]		DWN D. MEYER 28JUN2014	MATERIAL PVC		FINISH BLACK	
TOLERANCES UNLESS OTHERWISE SPECIFIED:  0 PLC ± 1 PLC ± 2 PLC ± 0.63 [.025] 3 PLC ± 4 PLC ± ANGLES ± 5°  		CHK P. CARNAHAN 28JUN2014	 TE Connectivity			
		APVD D. MEYER 28JUN2014				
		PRODUCT SPEC	NAME BOOT, LARGE DRB SERIES			
		APPLICATION SPEC				
		WEIGHT 84.00 G	SIZE A 4	CAGE CODE 4AFU8	DRAWING NO C-DRB102-BT	
Customer Drawing			SCALE NONE	SHEET 1 OF 1	REV A	