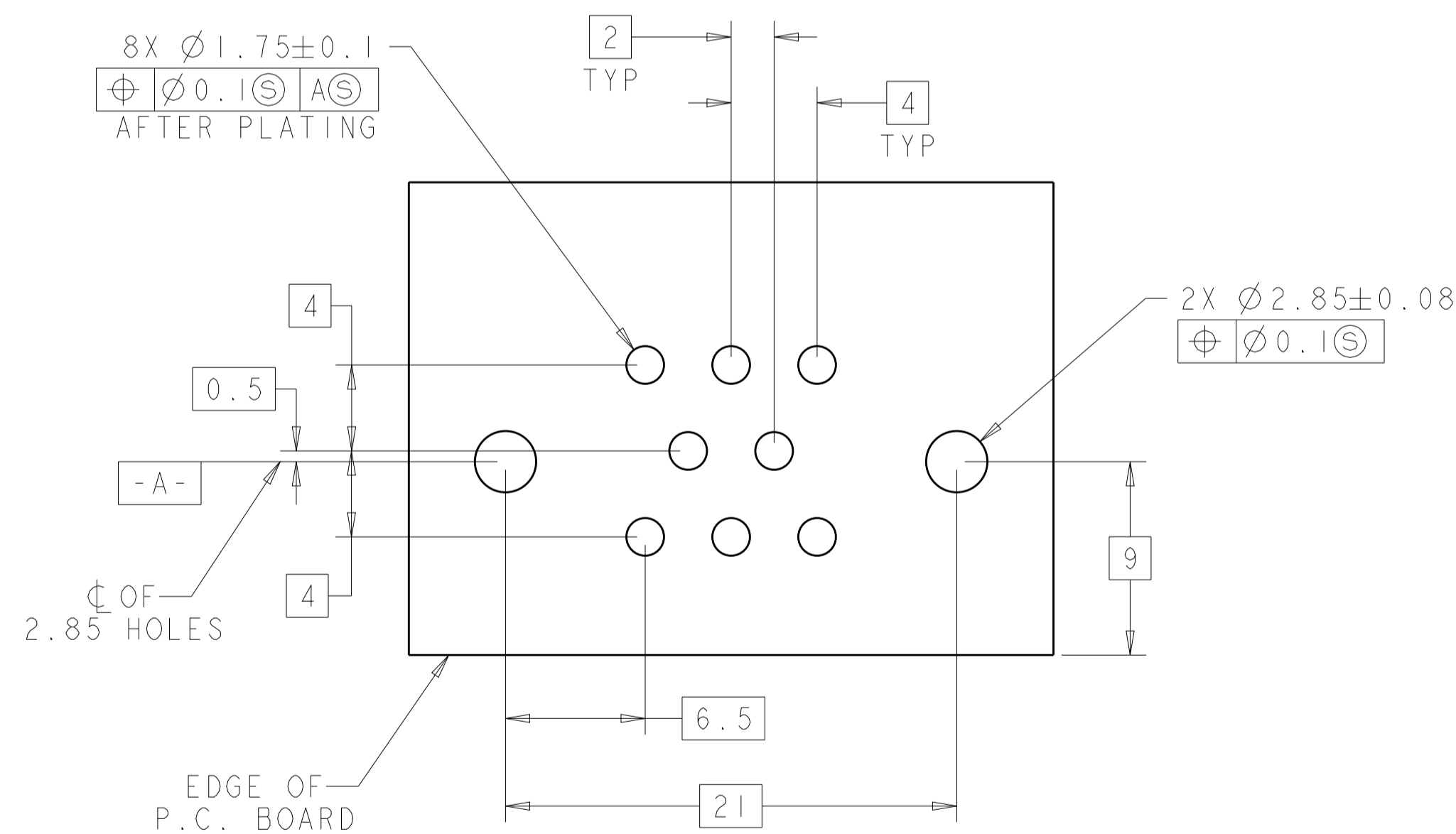
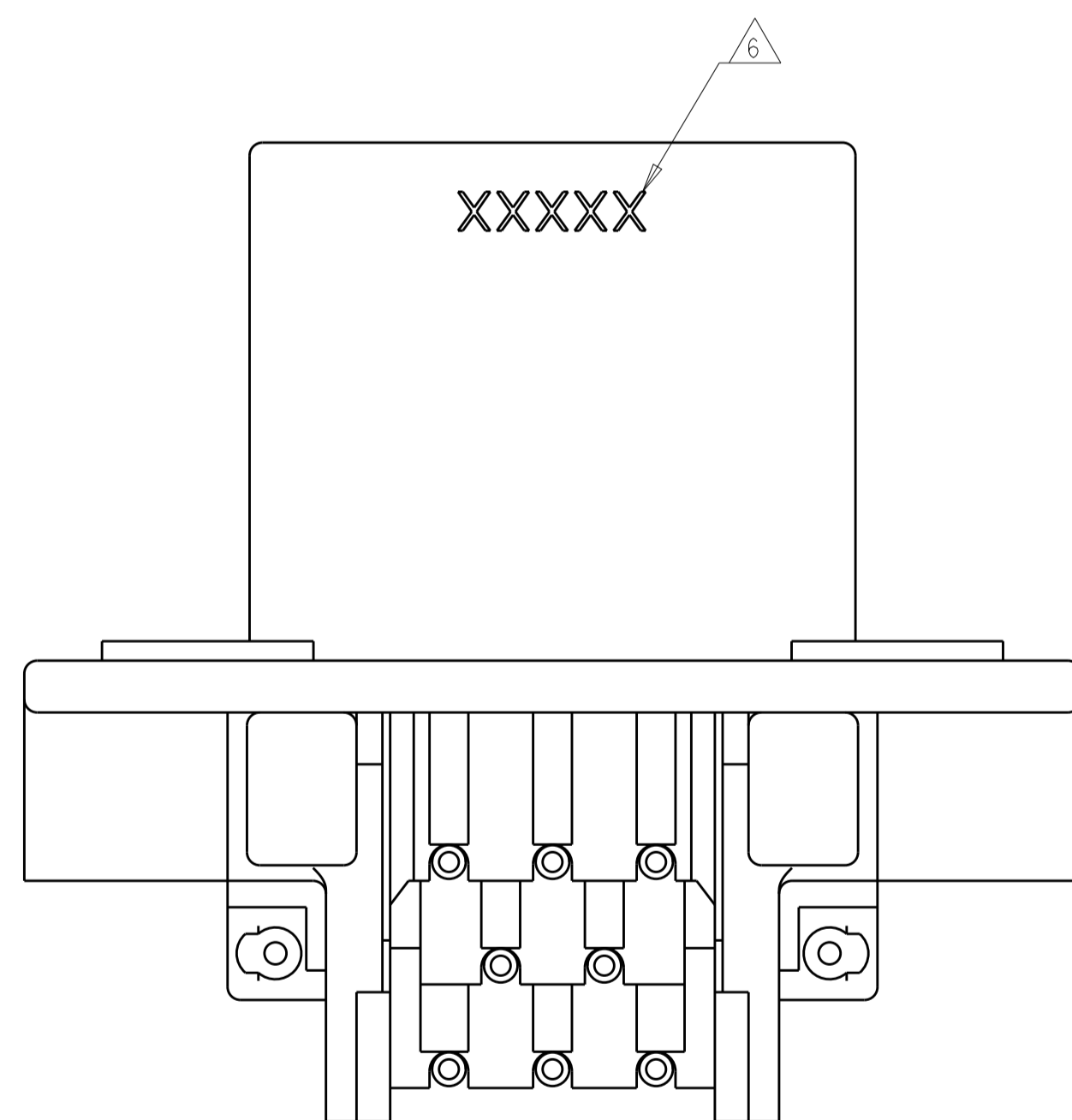



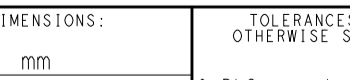

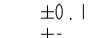


- ③ ACCEPTS #4 SELF TAPPING THREAD FORMING SCREWS OR METRIC EQUIVALENT. DRIVE TO 0.6-0.8 N-m.
- ② HOUSING COLORS ARE MECHANICALLY KEYED TO MATE ONLY WITH IDENTICALLY COLORED PLUG ASSEMBLIES.
- ③ REFER TO PAGE 2 FOR 776279-6 ASSEMBLY DIMENSIONS, RECOMMENDED MOUNTING HOLE AND P.C. BOARD LAYOUT ARE THE SAME FOR ALL DASH NUMBERS.
4. HEADER MATES TO PLUG ASSEMBLY 776286 WHICH USES REELED TERMINAL 770520 AND LOOSE PIECE TERMINAL 770854.
- ③ MATERIALS: GASKET - SILICONE
HEADER HOUSING - GLASS FILLED PBT
PINS - TIN OR GOLD PLATED BRASS
- ② DATE CODE TO BE BRANDED IN THIS LOCATION PER TE SPEC 102-60. USE 5 DIGIT CODE: FIRST 2 DIGITS = YEAR, SECOND 2 DIGITS = WEEK, LAST DIGIT = DAY



RECOMMENDED P.C. BOARD LAYOUT FOR 1.57 THICK P.C. BOARD

| | | |
|---|-----------------|--|
| NATURAL | DURAGOLD PLATED | 1-776279-2 |
| BLACK | DURAGOLD PLATED | 1-776279-1 |
| BLACK | TIN PLATED |  776279-6 |
| NATURAL | TIN PLATED | 776279-2 |
| BLACK | TIN PLATED | 776279-1 |
|  HEADER HOUSING COLOR | PIN | PART NUMBER |

| | | | | | |
|--|--|--|--|---|--|
| THIS DRAWING IS A CONTROL DOCUMENT. | | DWG J. MARKEY 29FEB08 CHK J. MARKEY 29FEB08 J. MARKEY 29FEB08 | |  TE Connectivity | |
| DIMENSIONS: mm  | | TOLERANCES UNLESS OTHERWISE SPECIFIED: 0 PLC ±.04 1 PLC ±0.13 3 PLC ±.04 4 ANGLES ±.5° | | NAME 8 POSITION, RIGHT ANGLE, AMPSEAL | |
| MATERIAL  | | FINISH  | | SIZE A100779 | |
| WEIGHT - | | APPLICATION SPEC 108-1329 114-16016 | | DRAWING NO C=776279 | |
| CUSTOMER DRAWING | | SCALE 4:1 | | SHEET 1 OF 3 REV F6 | |

| REVISIONS | | | | | |
|-----------|------|-------------|------|------|-------|
| P. | LTR. | DESCRIPTION | DATE | DWN. | APVD. |
| - | - | SEE SHEET 1 | - | - | - |
| | | | | | |
| | | | | | |
| | | | | | |

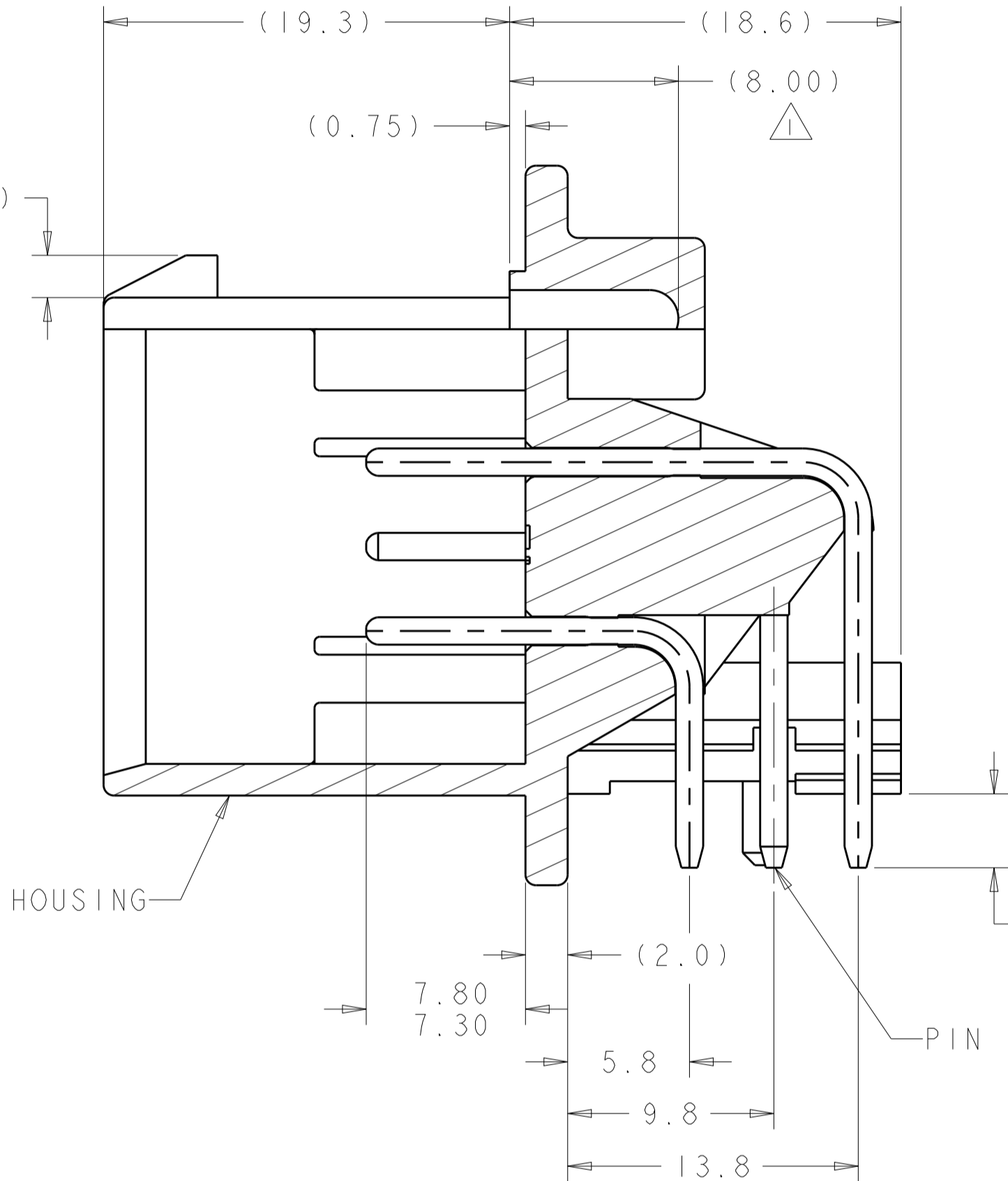
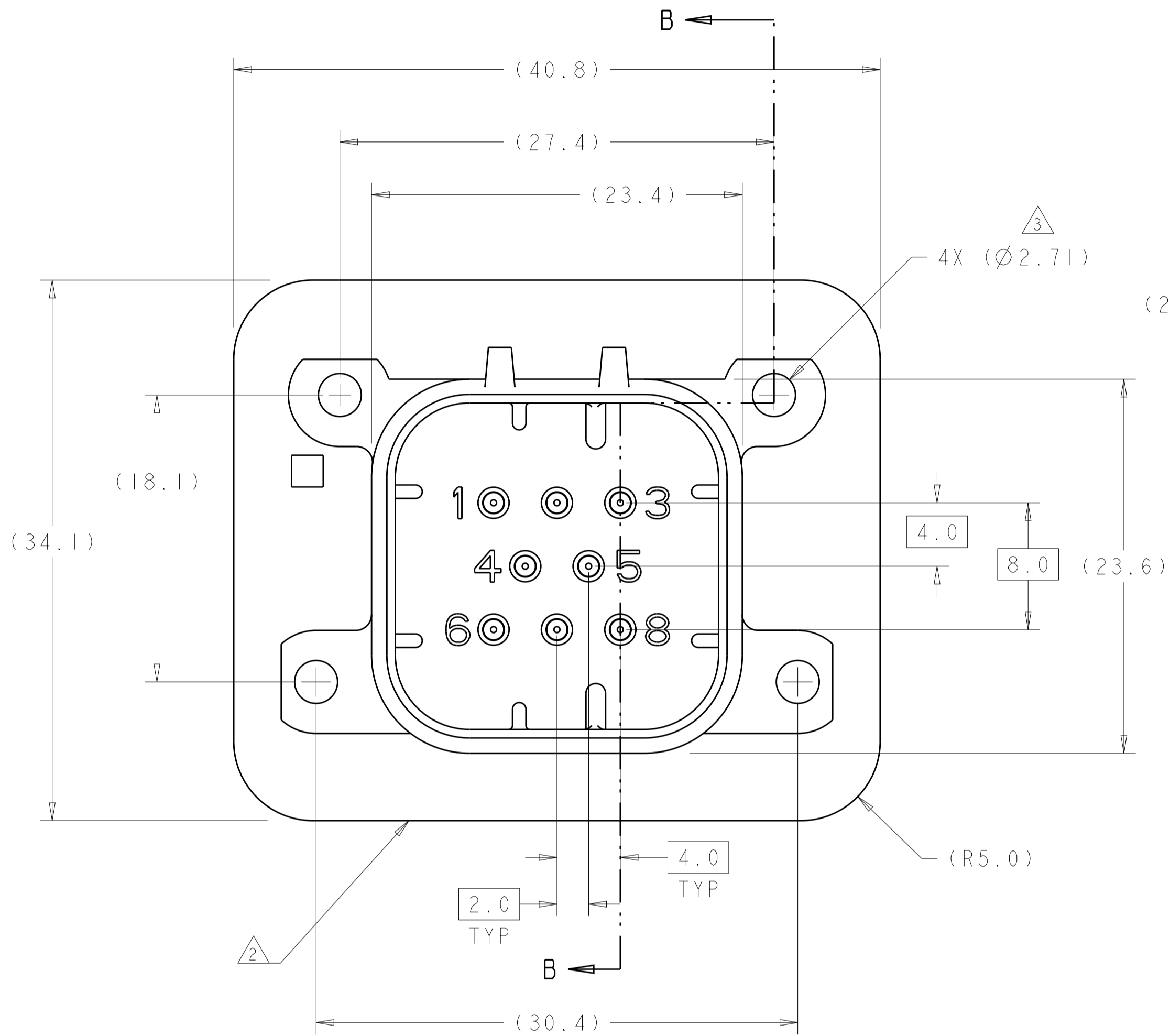
- 1 ACCEPTS #4-20 SELF TAPPING THREAD FORMING TWIN HELIX PLASTITE SCREW (SINGLE HELIX OPTIMAL)
- 2 HOUSING COLORS ARE MECHANICALLY KEYED TO MATE ONLY WITH IDENTICALLY COLORED PLUG ASSEMBLIES.
- 3 0° 30' MAX DRAFT FROM TOP OF HOLE (1° INCLUDED ANGLE)

D

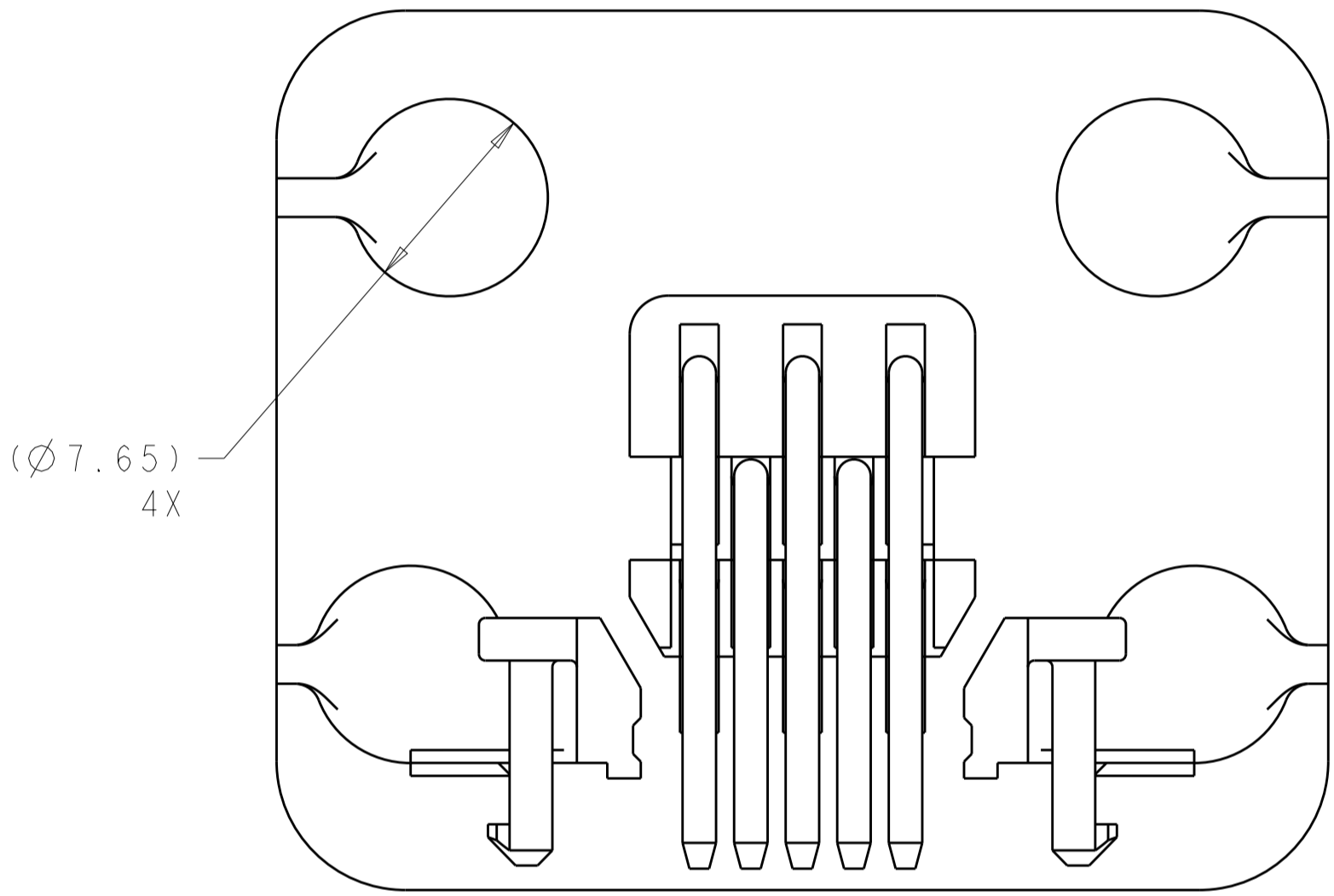
C

B

A



SECTION B-B



C

B

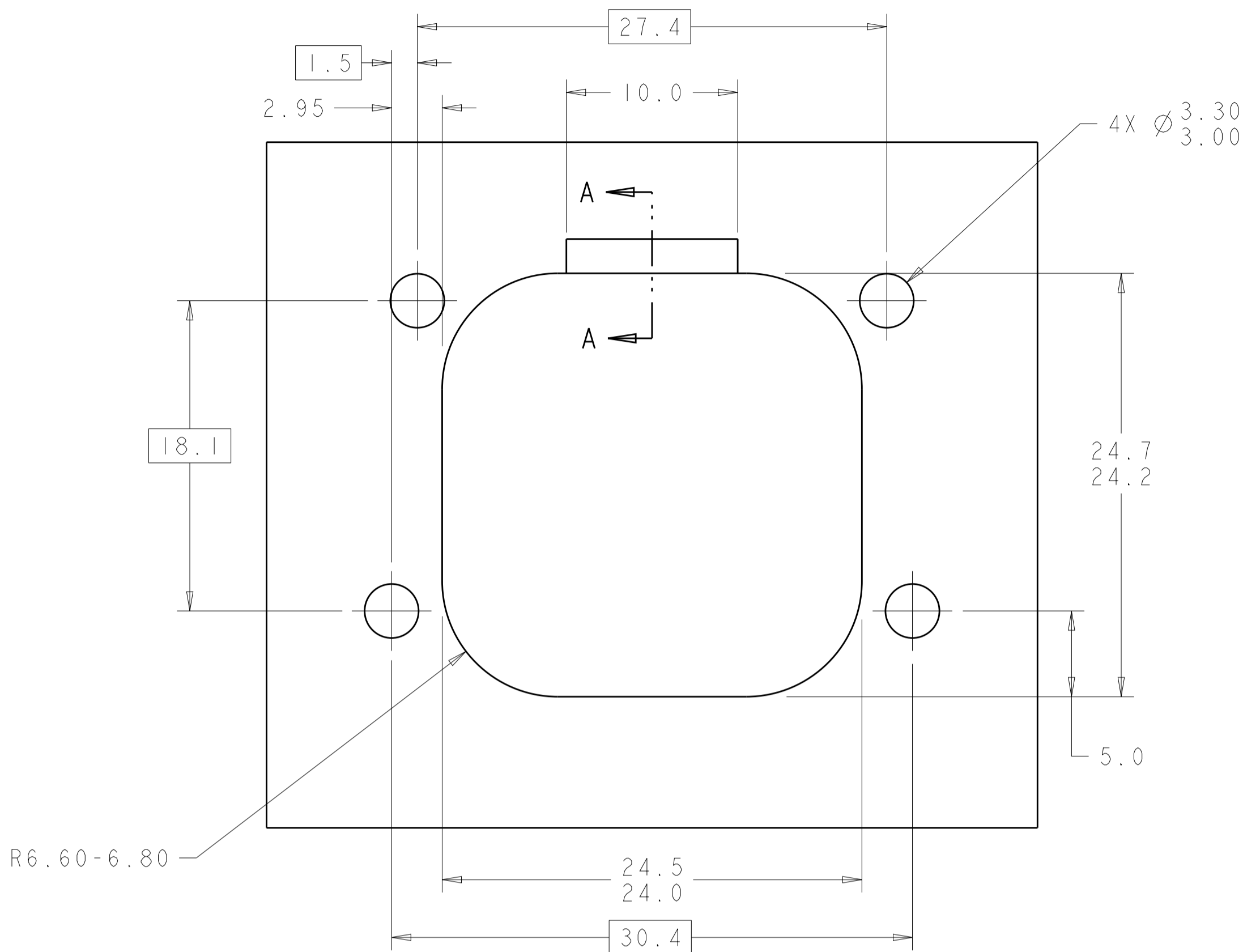
A

ASSEMBLY DIMENSIONS APPLY TO 776279-6 ONLY
(HOLE LAYOUT AND P.C. BOARD LAYOUT SHOWN APPLY TO ALL DASH NUMBERS)

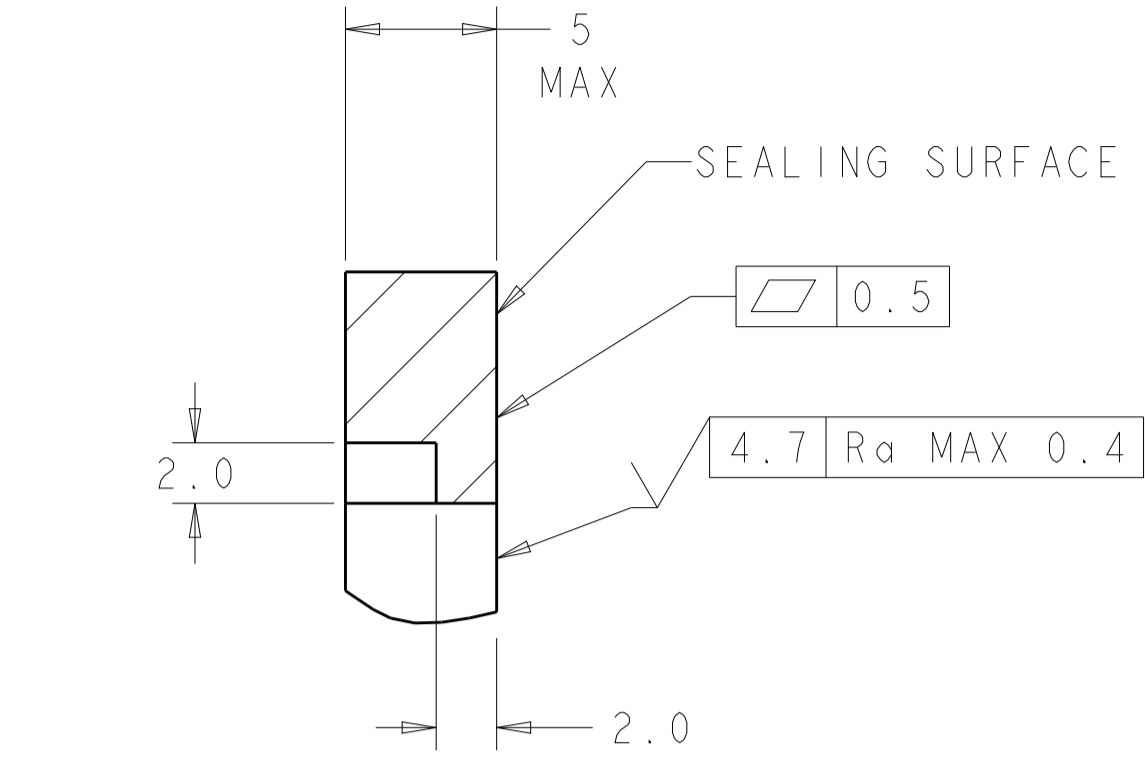
| | | |
|----------------------|------------|-------------|
| BLACK | TIN PLATED | 776279-6 |
| HEADER HOUSING COLOR | PIN | PART NUMBER |

| | | | | |
|--|--|------------------------|---|--|
| THIS DRAWING IS A CONTROLLED DOCUMENT. | | DWN J. MARKEY 29FEB08 | TE Connectivity | |
| | | CHK J. MARKEY 29FEB08 | | |
| | | APVD J. MARKEY 29FEB08 | NAME | |
| DIMENSIONS: | | PRODUCT SPEC | HEADER ASSEMBLY, 8 POSITION, RIGHT ANGLE, AMPSEAL | |
| mm | | 108-1329 | | |
| | | APPLICATION SPEC | SIZE CAGE CODE DRAWING NO | |
| | | 114-16016 | A100779C=776279 | |
| MATERIAL | | WEIGHT | RESTRICTED TO | |
| - | | - | - | |
| | | CUSTOMER DRAWING | SCALE 4:1 SHEET 2 OF 3 REV F6 | |

| REVISIONS | | | | | |
|-----------|------|-------------|------|------|-------|
| P. | LTR. | DESCRIPTION | DATE | DWN. | APVD. |
| - | - | SEE SHEET 1 | - | - | - |
| | | | | | |
| | | | | | |
| | | | | | |

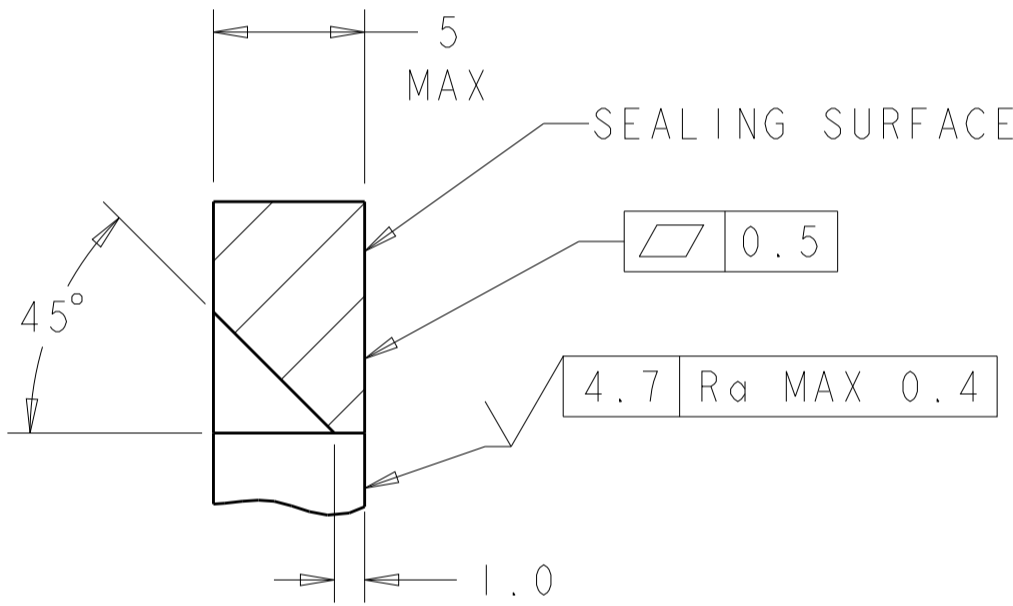


RECOMMENDED MOUNTING HOLE LAYOUT
FOR 5.0 MAX THICK PANEL



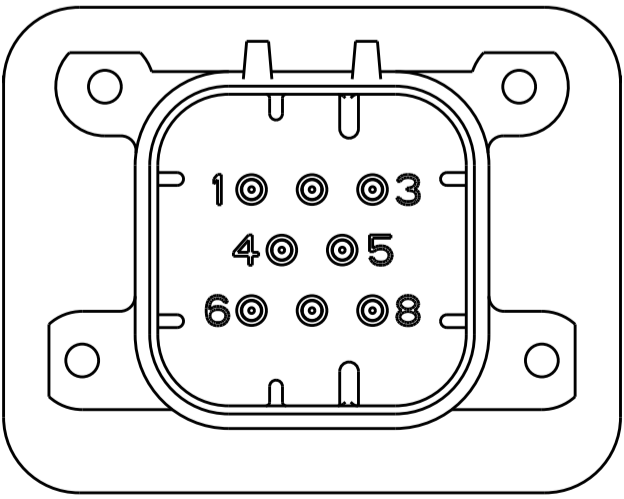
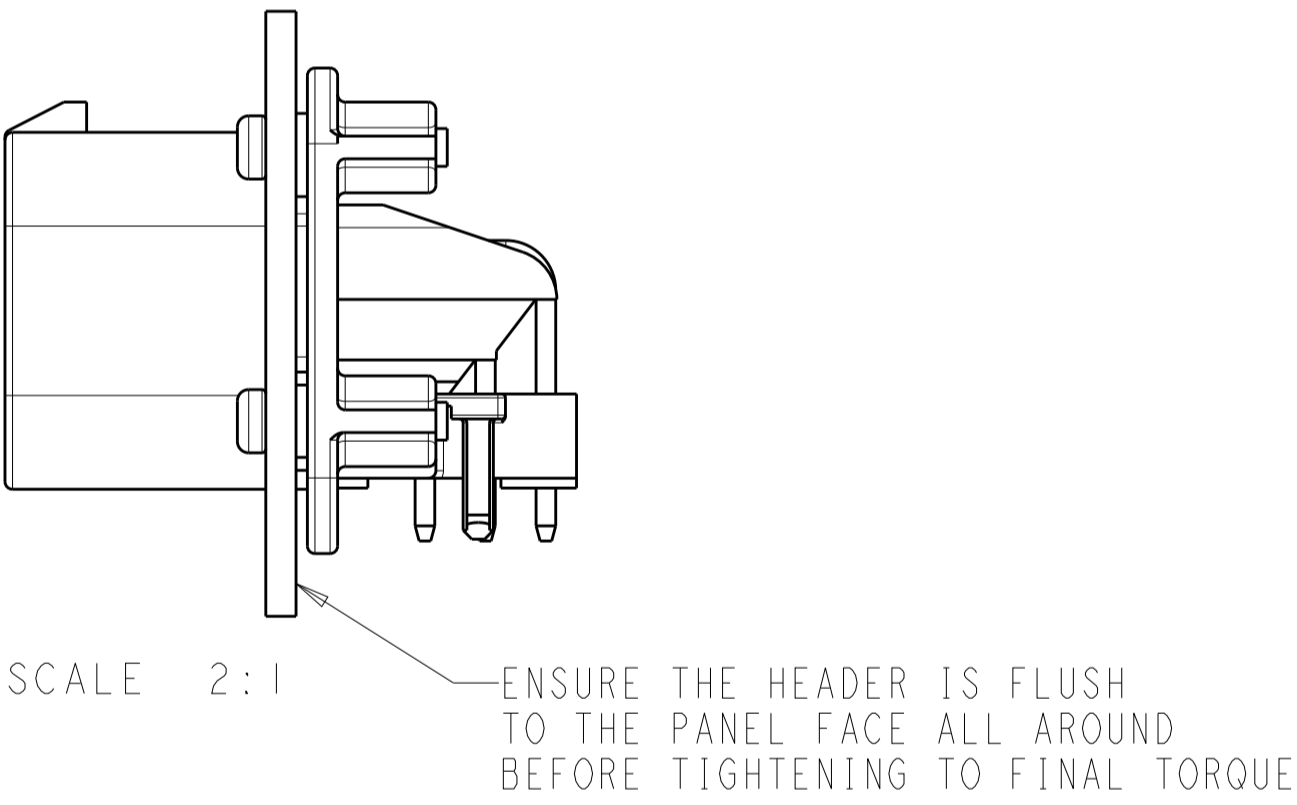
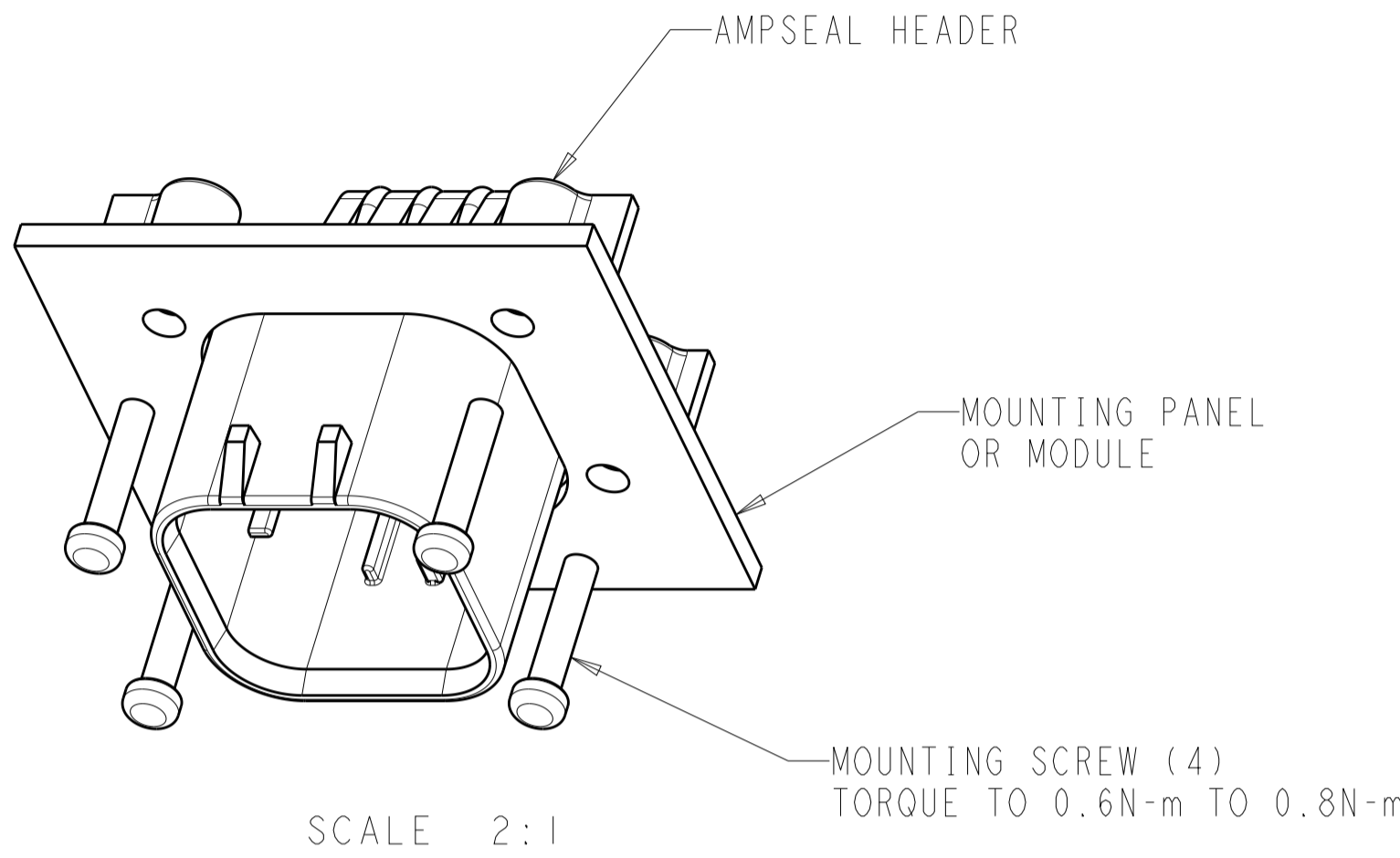
SECTION A-A
OPTIONAL CONSTRUCTION IF PANEL
THICKNESS IS GREATER THEN 2.0

SCALE 4:1



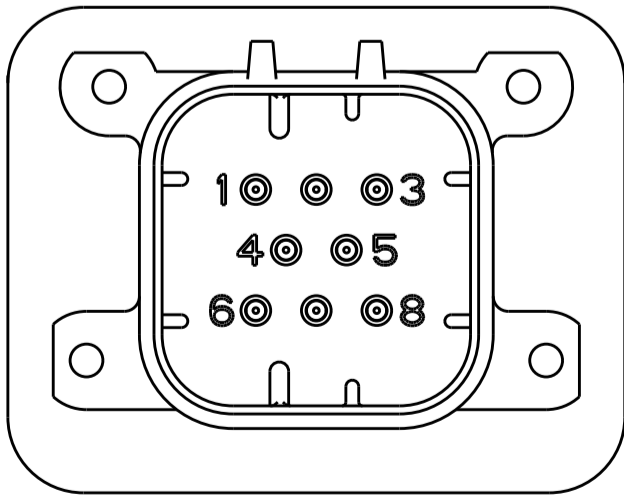
SECTION A-A
OPTIONAL CONSTRUCTION IF PANEL
THICKNESS IS GREATER THEN 2.0

SCALE 4:1



776279-1, 776279-6 & 1-776279-1
KEY LOCATION

SCALE 2:1



776279-2 & 1-776279-2
KEY LOCATION

SCALE 2:1

| | | | | |
|--|--|------------------------|---|------------|
| THIS DRAWING IS A CONTROLLED DOCUMENT. | | DWN J. MARKEY 29FEB08 | TE Connectivity | |
| DIMENSIONS: | | CHK J. MARKEY 29FEB08 | | |
| mm | TOLERANCES UNLESS OTHERWISE SPECIFIED: | APVD J. MARKEY 29FEB08 | NAME | |
| 0 PLC ±0.2 | 1 PLC ±0.13 | PRODUCT SPEC | HEADER ASSEMBLY, 8 POSITION, RIGHT ANGLE, AMPSEAL | |
| 2 PLC ±0.13 | 3 PLC ±0.13 | APPLICATION SPEC | | |
| 4 PLC ±0.13 | ANGLES ±4° | 114-16016 | SIZE | CAGE CODE |
| MATERIAL | FINISH | WEIGHT | 100779 | DRAWING NO |
| CUSTOMER DRAWING | | A100779 | | REV F6 |