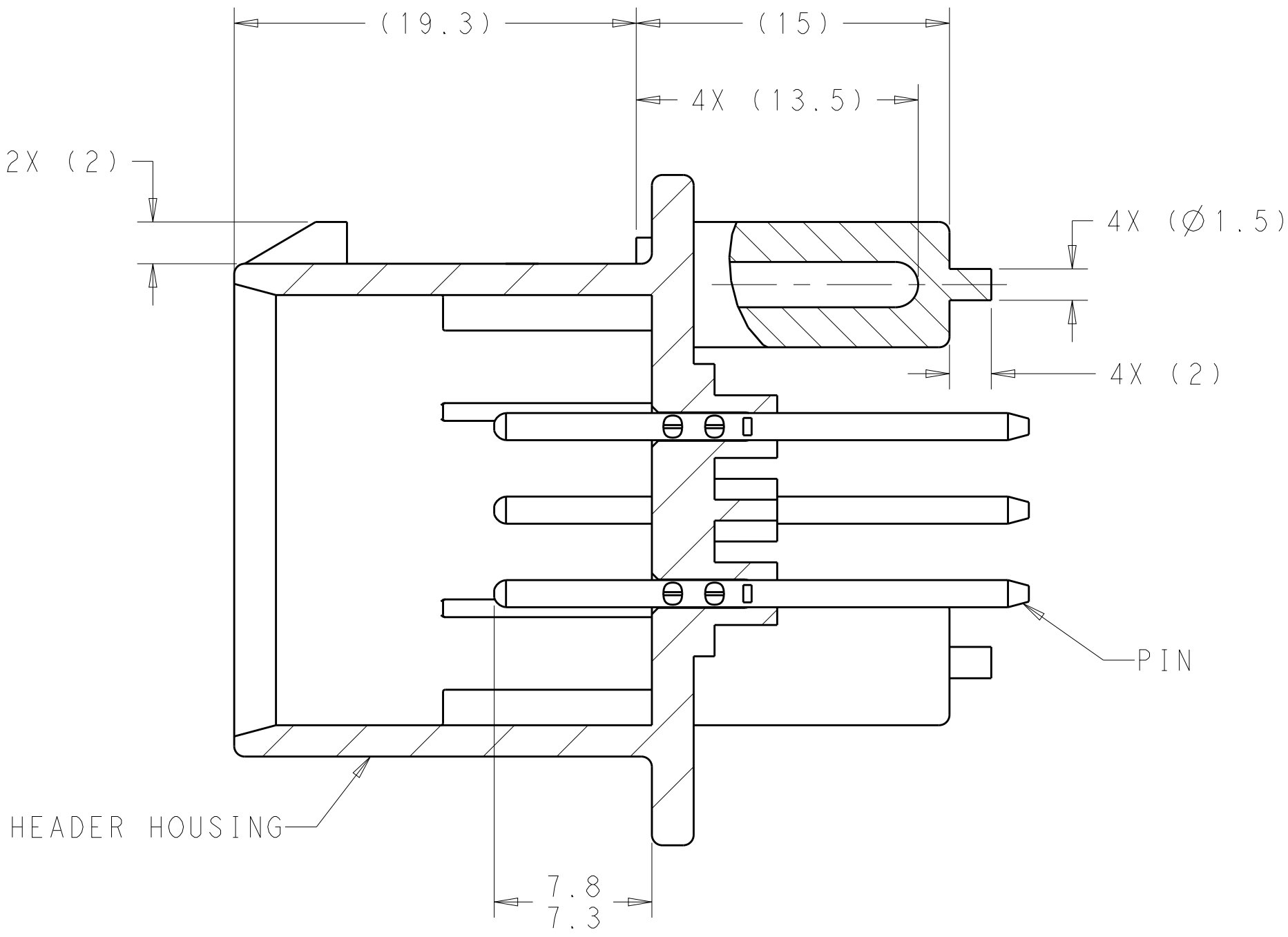
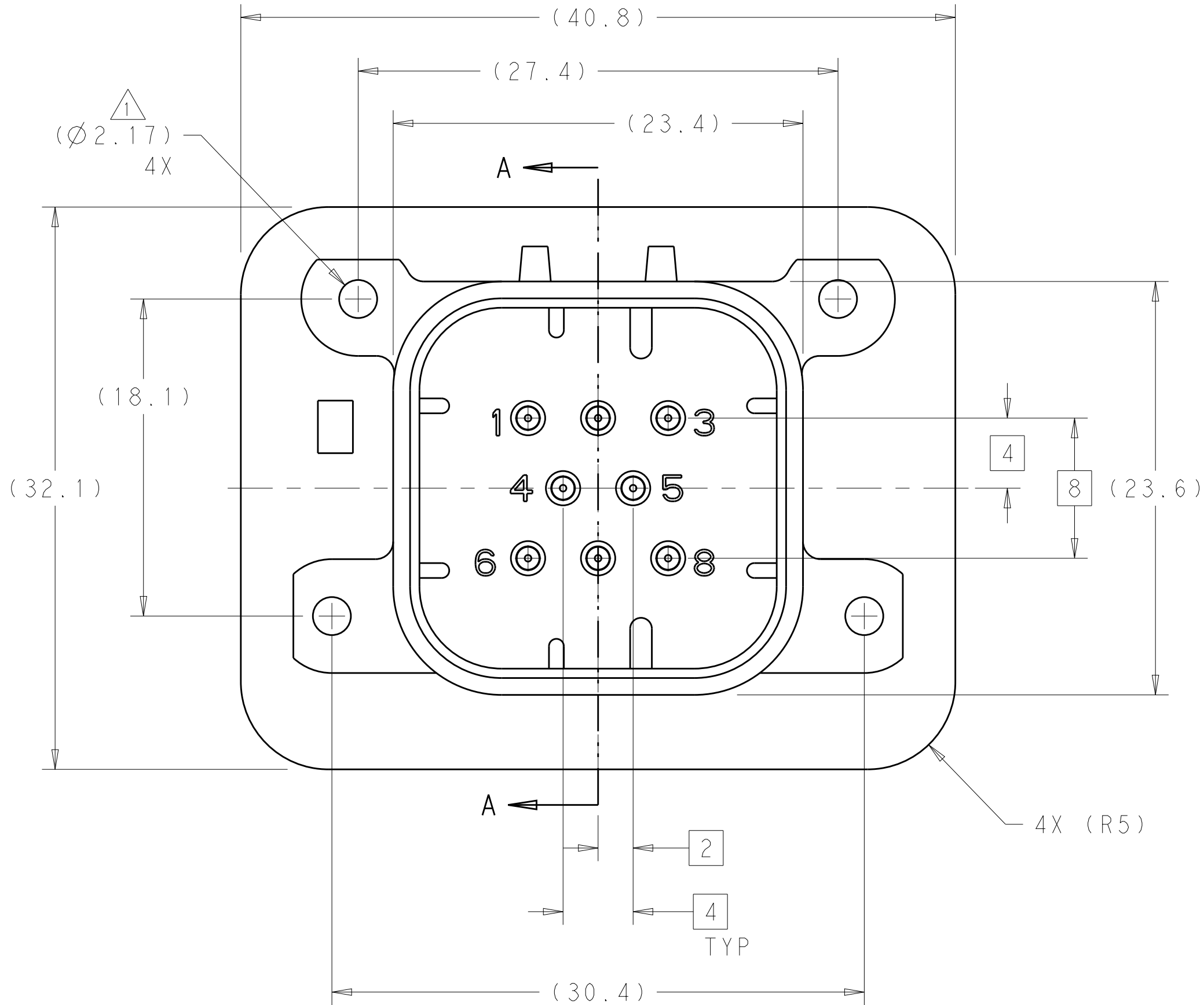
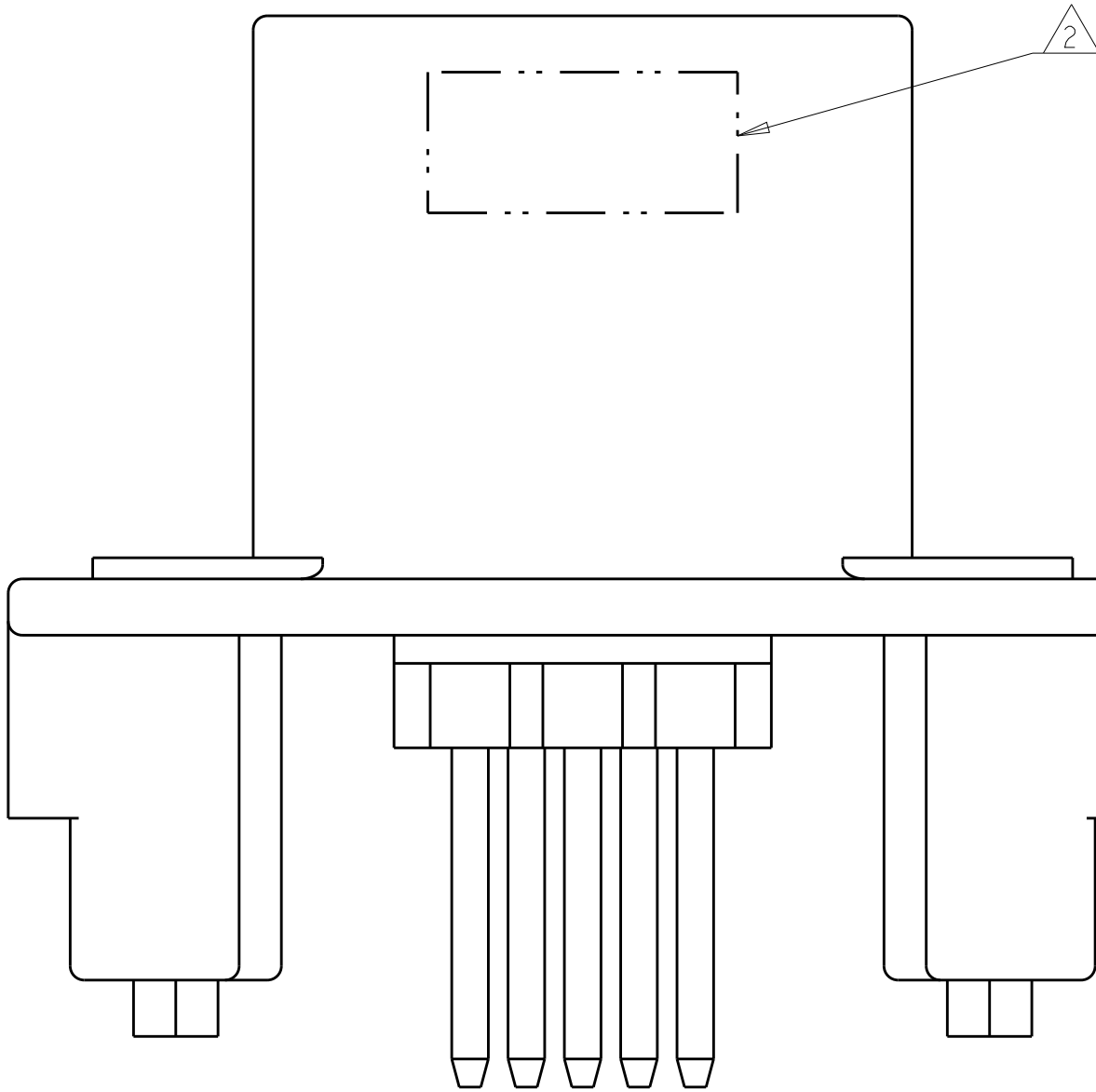


REVISIONS					
P	LTR	DESCRIPTION	DATE	DWN	APVD
	B6	REVISED PER ECO-15-003872	25MAR2015	DD	DS

- 1 ACCEPTS #4 SELF TAPPING THREAD FORMING SCREWS OR METRIC EQUIVALENT. DRIVE TO 0.6-0.8 N-m.
- 2 DATE CODE IN THIS LOCATION USING 5 DIGIT CODE
FIRST 2 DIGITS = YEAR, SECOND 2 DIGITS = WEEK
LAST DIGIT = DAY.
- 3 MATERIALS: HEADER HOUSING - GLASS FILLED PBT
PINS - TIN OR GOLD PLATED BRASS
- 4 HOUSING COLORS ARE MECHANICALLY KEYS TO MATE ONLY WITH IDENTICALLY COLORED PLUG ASSEMBLIES.
5. HEADER MATES TO PLUG ASSEMBLY 776286 WHICH USES REELED TERMINAL 770520 OR LOOSE PIECE TERMINAL 770854.



SECTION A - A

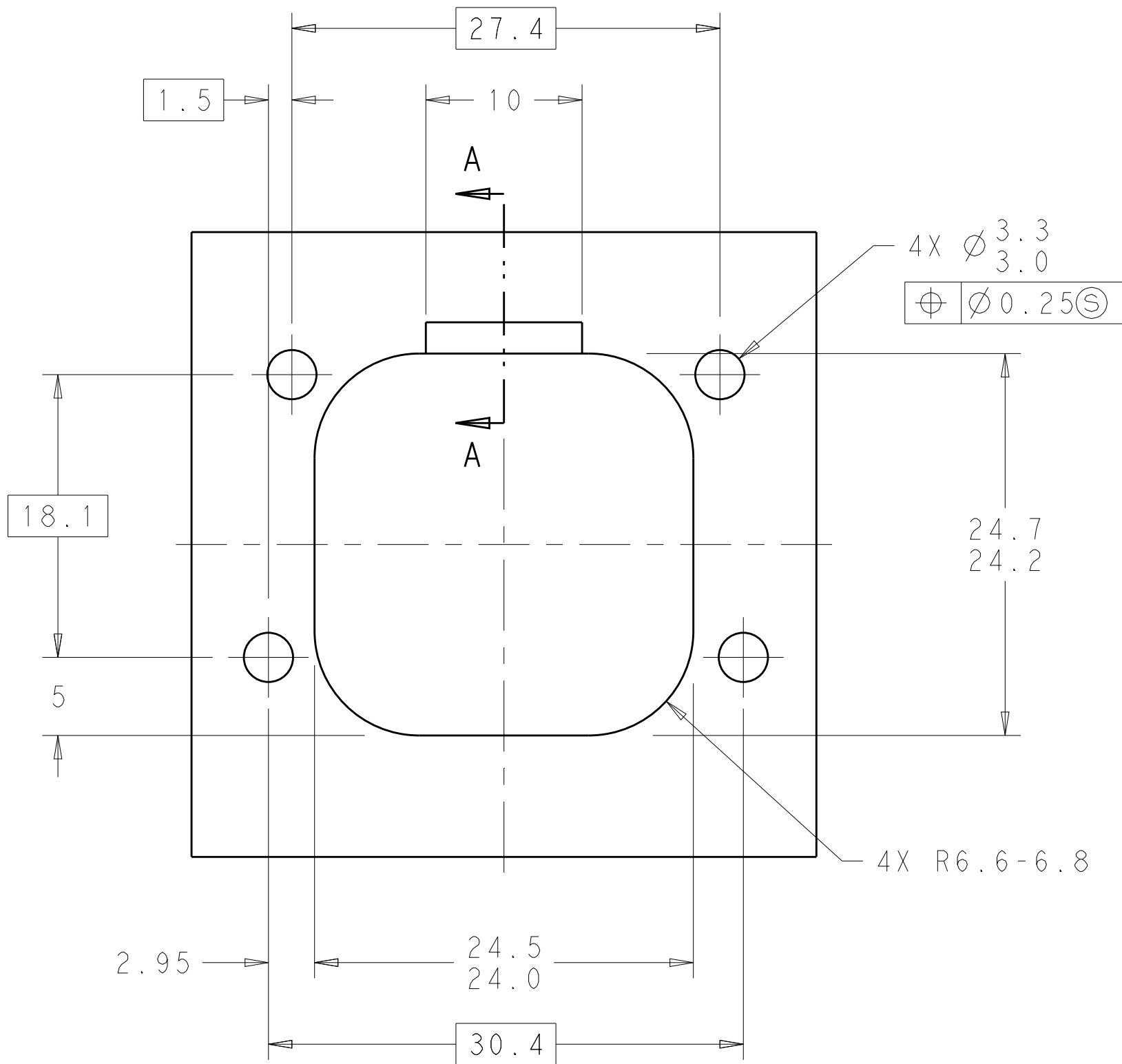


776275-1 & 1-776275-1 SHOWN

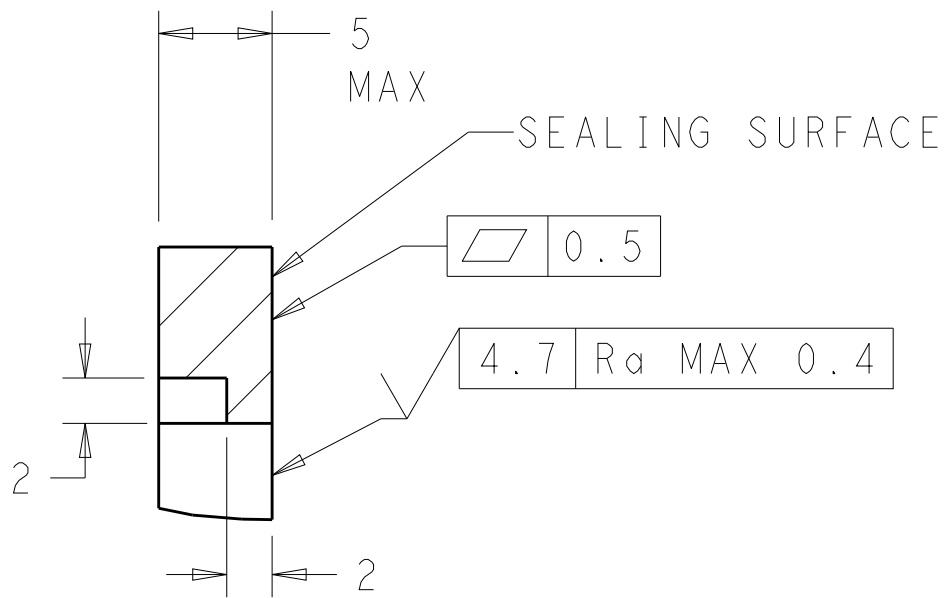
NATURAL	DURAGOLD	1-776275-2
BLACK	DURAGOLD	1-776275-1
NATURAL	TIN	776275-2
BLACK	TIN	776275-1
HEADER COLOR 4	PLATING	PART NUMBER

THIS DRAWING IS A CONTROLLED DOCUMENT.		DWN D. STRAUSSER 29 JAN 2010	TE Connectivity	
DIMENSIONS:		CHK D. STRAUSSER 22 MAR 2010		
mm	TOLERANCES UNLESS OTHERWISE SPECIFIED:	APVD D. STRAUSSER 27 APR 2010	NAME	
0 PLC ±.2	1 PLC ±0.13	PRODUCT SPEC	ASSEMBLY, HEADER, 8 POSITION, VERTICAL, AMPSEAL	
2 PLC ±.13	3 PLC ±.1	108-1329		
4 PLC ±.1	ANGLES ±1°	APPLICATION SPEC	SIZE CAGE CODE DRAWING NO	
FINISH		114-16016		
MATERIAL 3		WEIGHT	A100779C=776275	
		CUSTOMER DRAWING		
		SCALE 4:1	SHEET 1 OF 2	
				REV B6

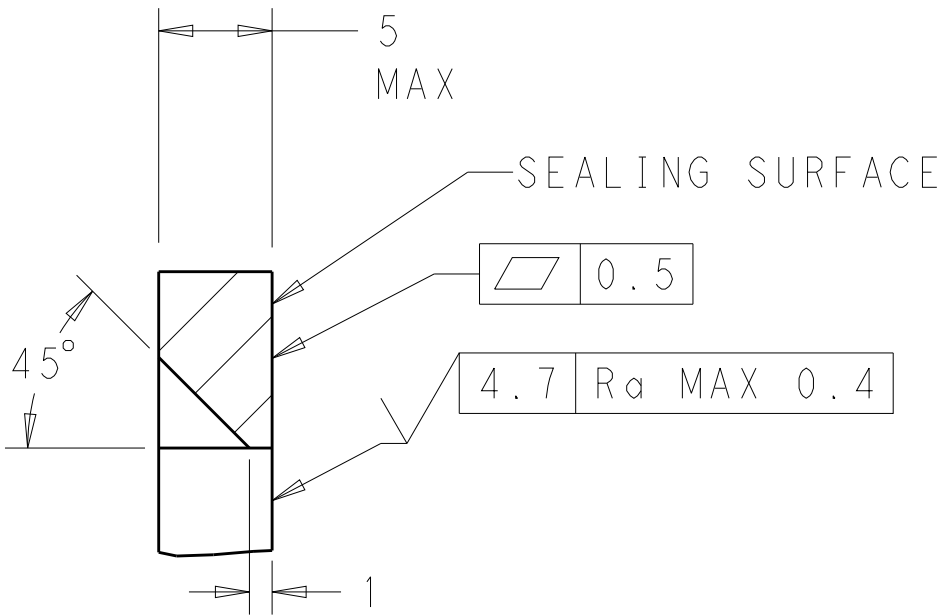
REVISIONS					
P	LTR	DESCRIPTION	DATE	DWN	APVD
-	-	SEE SHEET 1	-	-	-



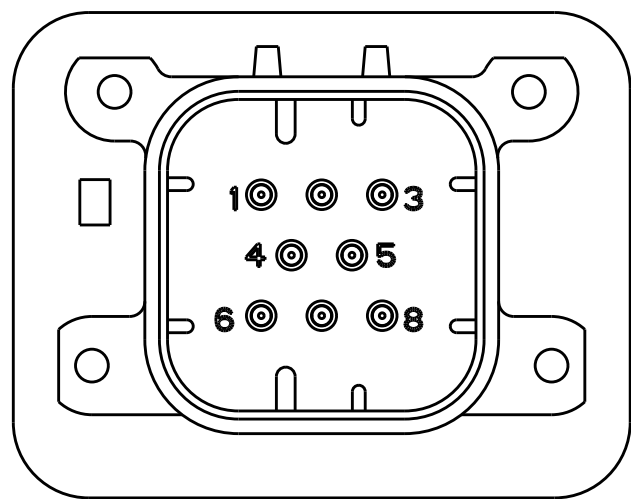
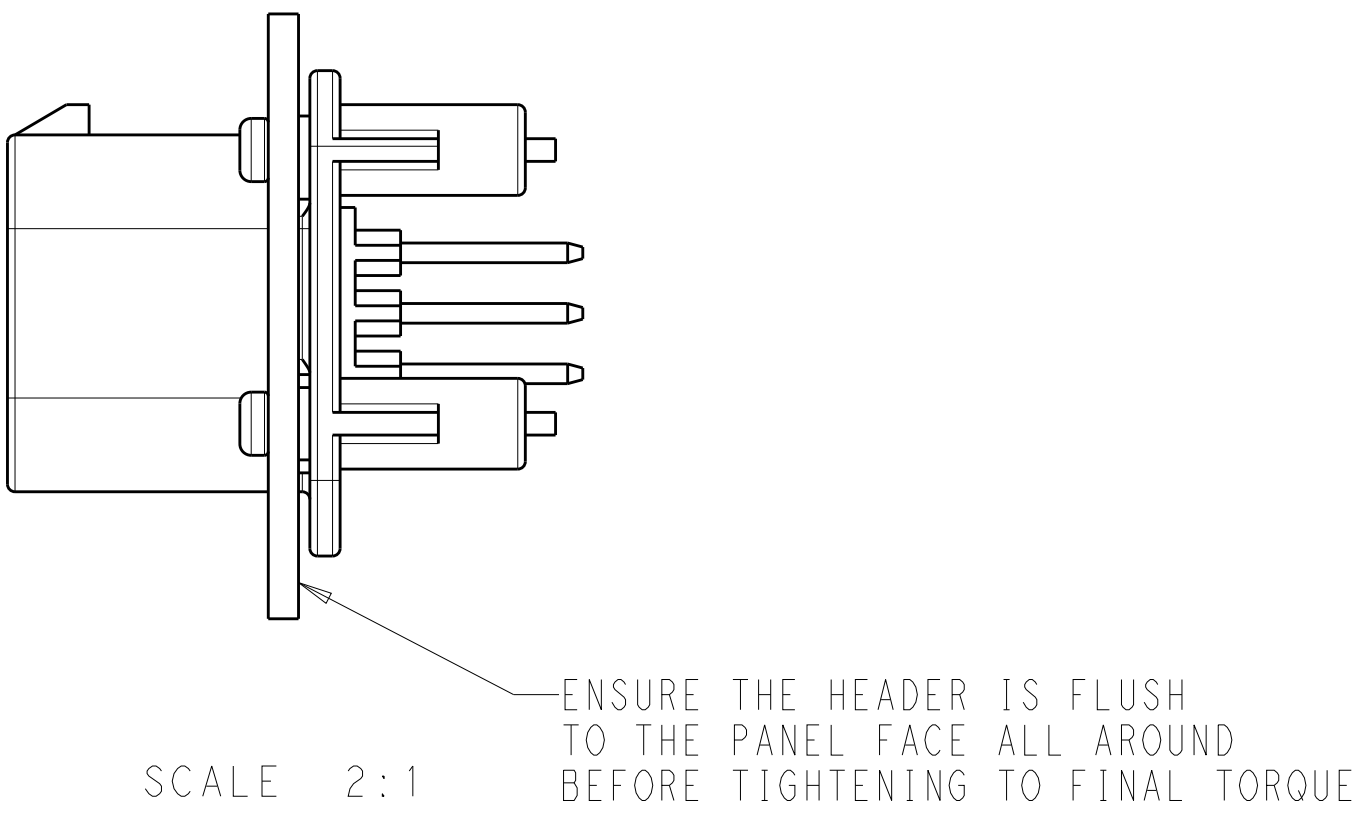
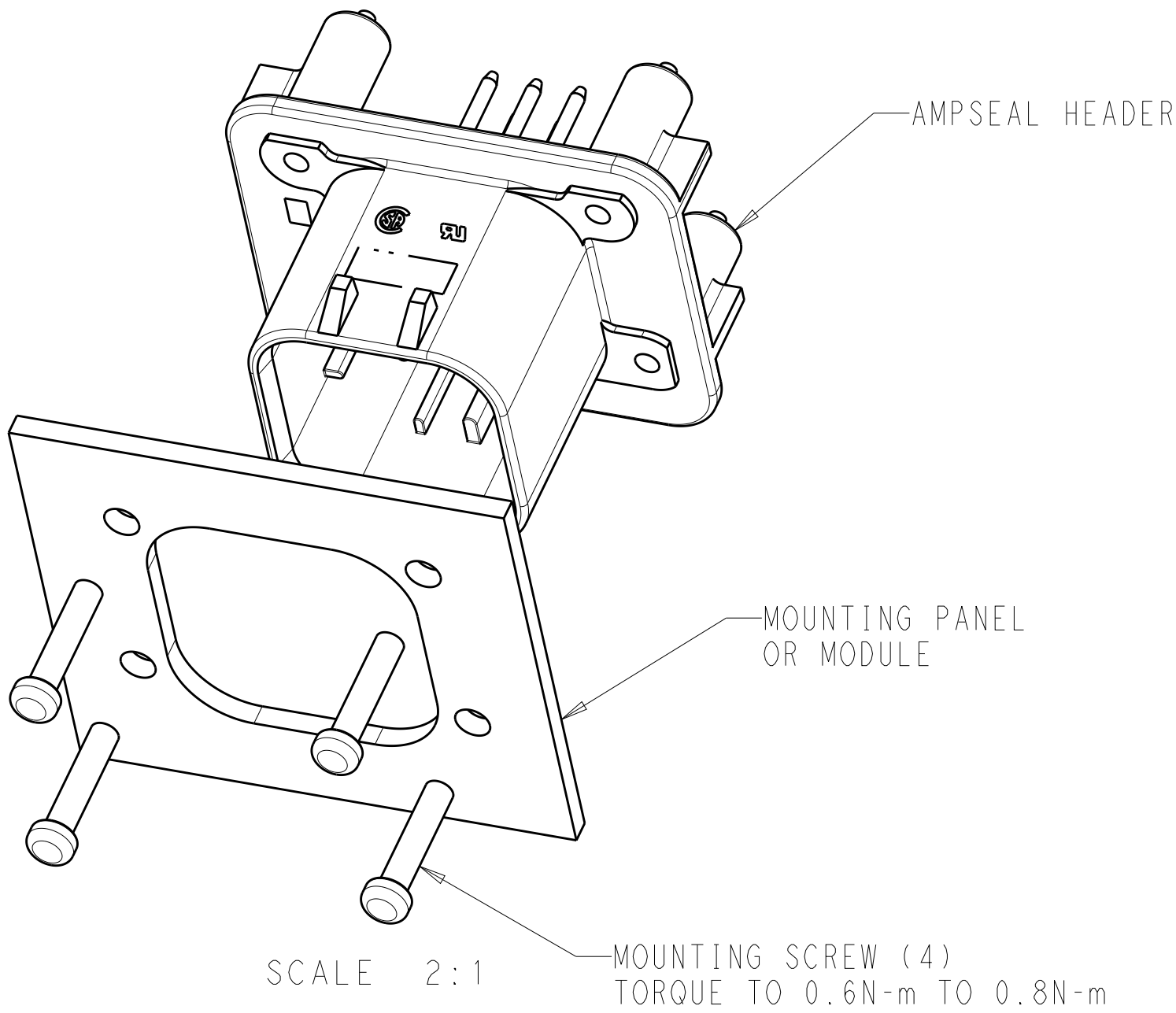
RECOMMENDED MOUNTING HOLE LAYOUT
FOR 5.0 MAX THICK PANEL



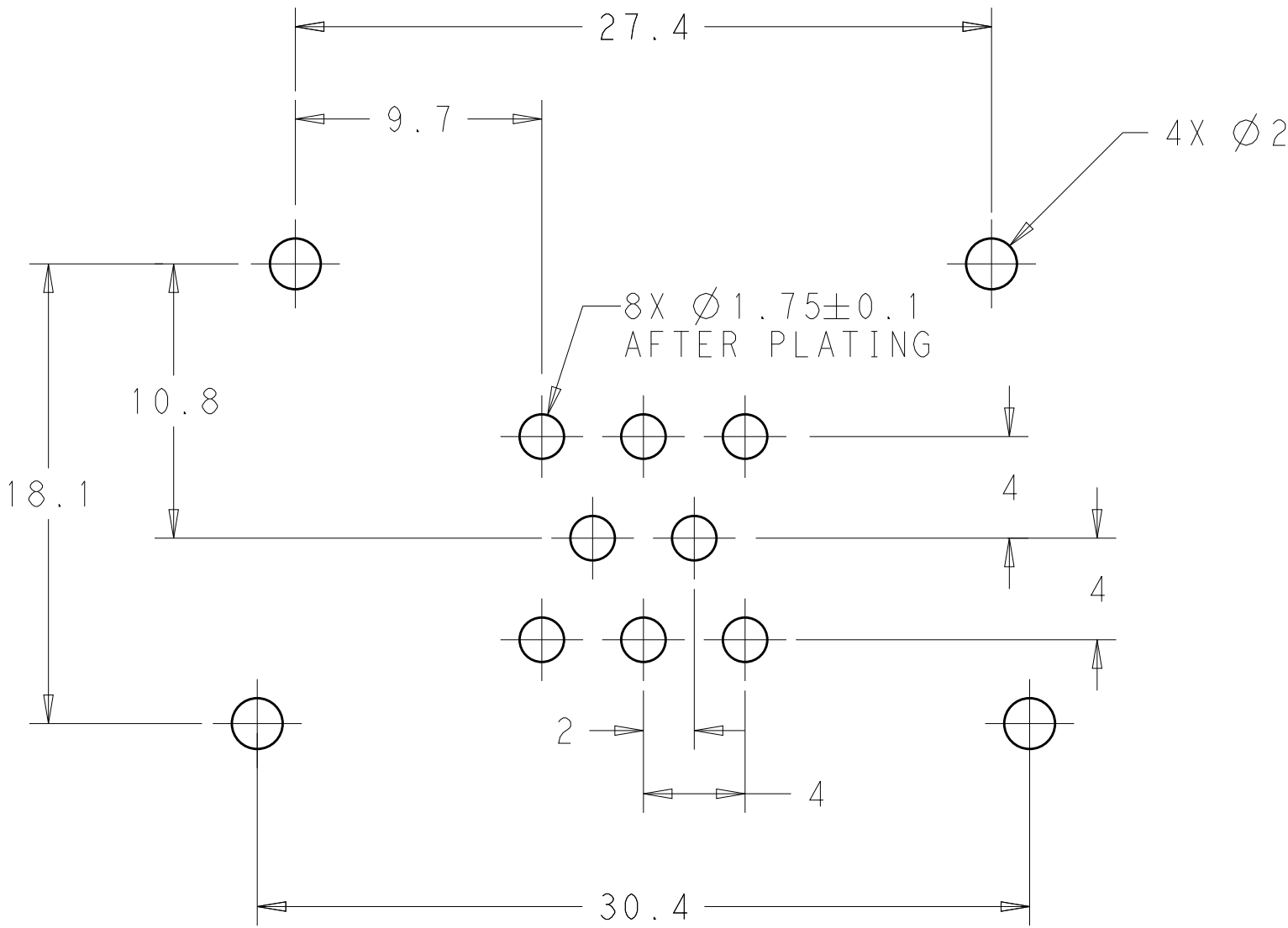
SECTION A - A
OPTIONAL CONSTRUCTION IF PANEL
THICKNESS IS GREATER THAN 2.0



SECTION A - A
OPTIONAL CONSTRUCTION IF PANEL
THICKNESS IS GREATER THAN 2.0



776275-2 & 1-776275-2
KEY LOCATION
SCALE 2:1



RECOMMENDED P.C. BOARD LAYOUT
FOR 1.57 THICK P.C. BOARD

THIS DRAWING IS A CONTROLLED DOCUMENT.		DWN D. STRAUSSER 29JAN2010 CHK D. STRAUSSER 22MAR2010 APVD D. STRAUSSER 27APR2010	TE Connectivity	
DIMENSIONS:	TOLERANCES UNLESS OTHERWISE SPECIFIED:	PRODUCT SPEC	NAME ASSEMBLY, HEADER, 8 POSITION, VERTICAL, AMPSEAL	
mm	0 PLC ±.2 1 PLC ±0.2 2 PLC ±0.13 3 PLC ±. 4 PLC ±. ANGLES ±1°	108-1329		
MATERIAL	FINISH	APPLICATION SPEC	SIZE CAGE CODE DRAWING NO	RESTRICTED TO
		114-16016	A100779C=776275	-
CUSTOMER DRAWING		WEIGHT	SCALE 4:1	SHEET 2 OF 2 REV B6