

REVISIONS					
P.	LTR	DESCRIPTION	DATE	DWN	APVD
	A8	REVISED PER ECO-15-003872	25MAR2015	DD	DS

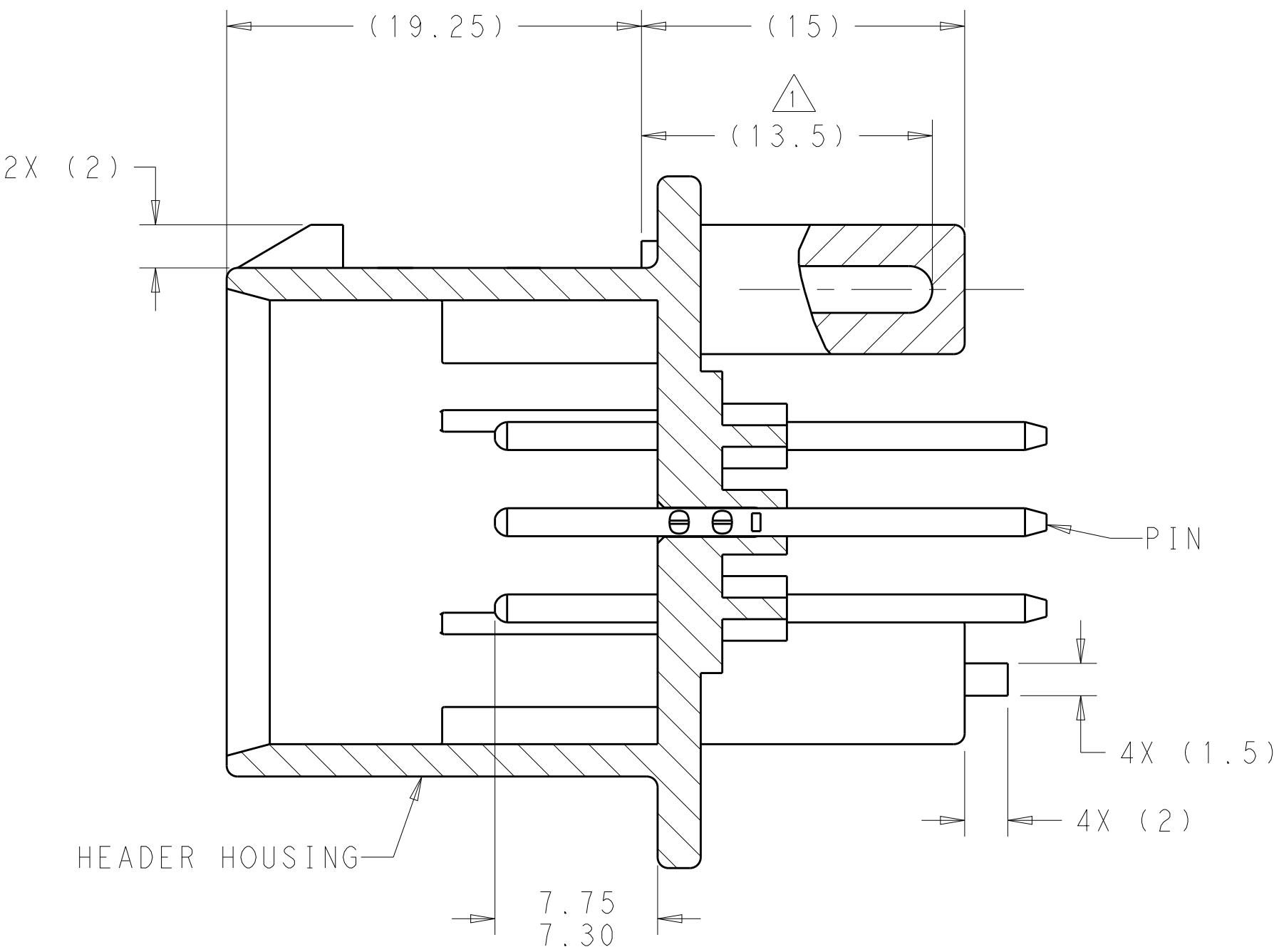
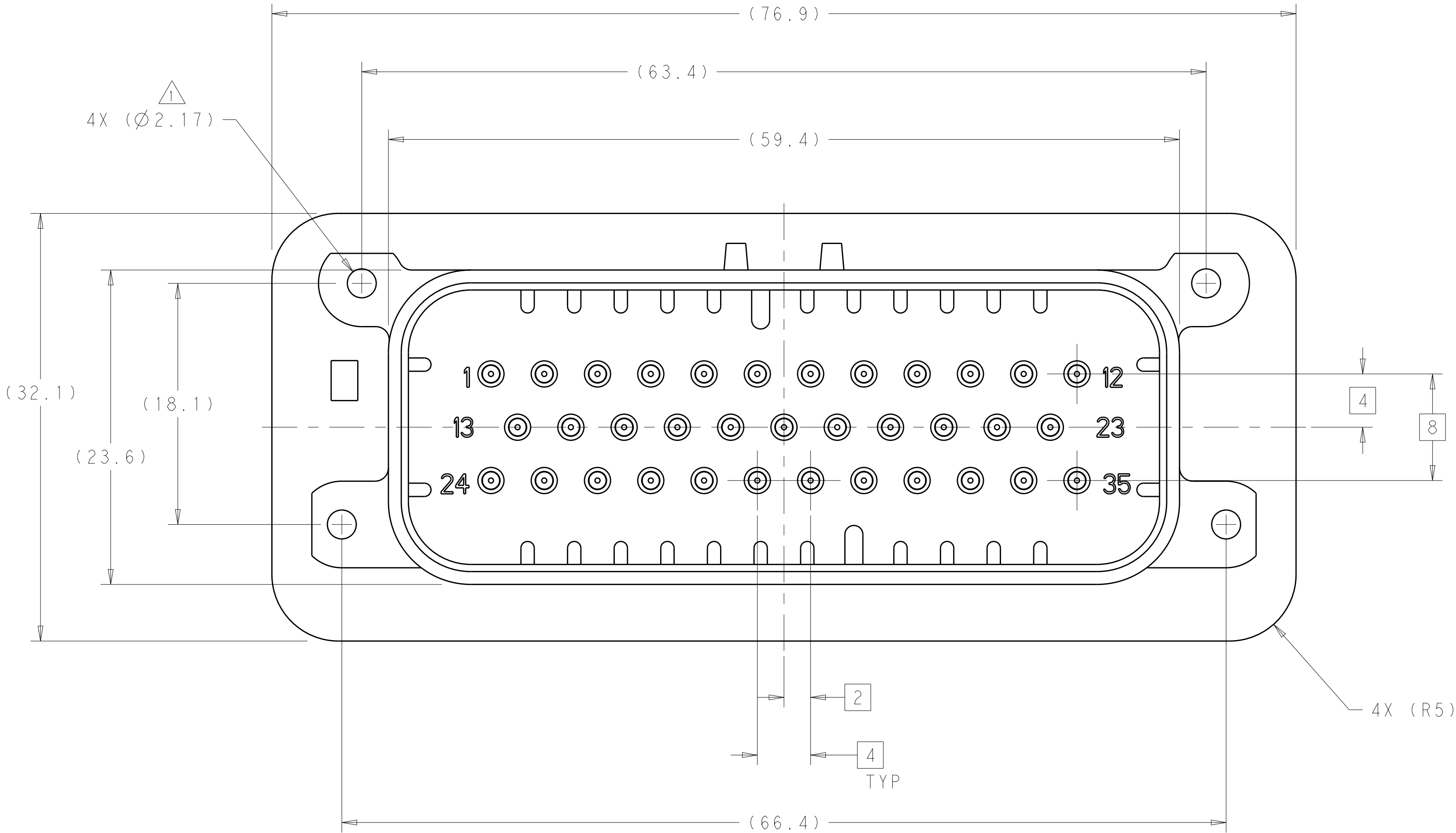
1 ACCEPTS #4 SELF TAPPING THREAD FORMING SCREWS OR METRIC EQUIVALENT. DRIVE TO 0.6-0.8 N-m

2 DATE CODE IN THIS LOCATION USING 5 DIGIT CODE
FIRST 2 DIGITS = YEAR, SECOND 2 DIGITS = WEEK
LAST DIGIT = DAY.

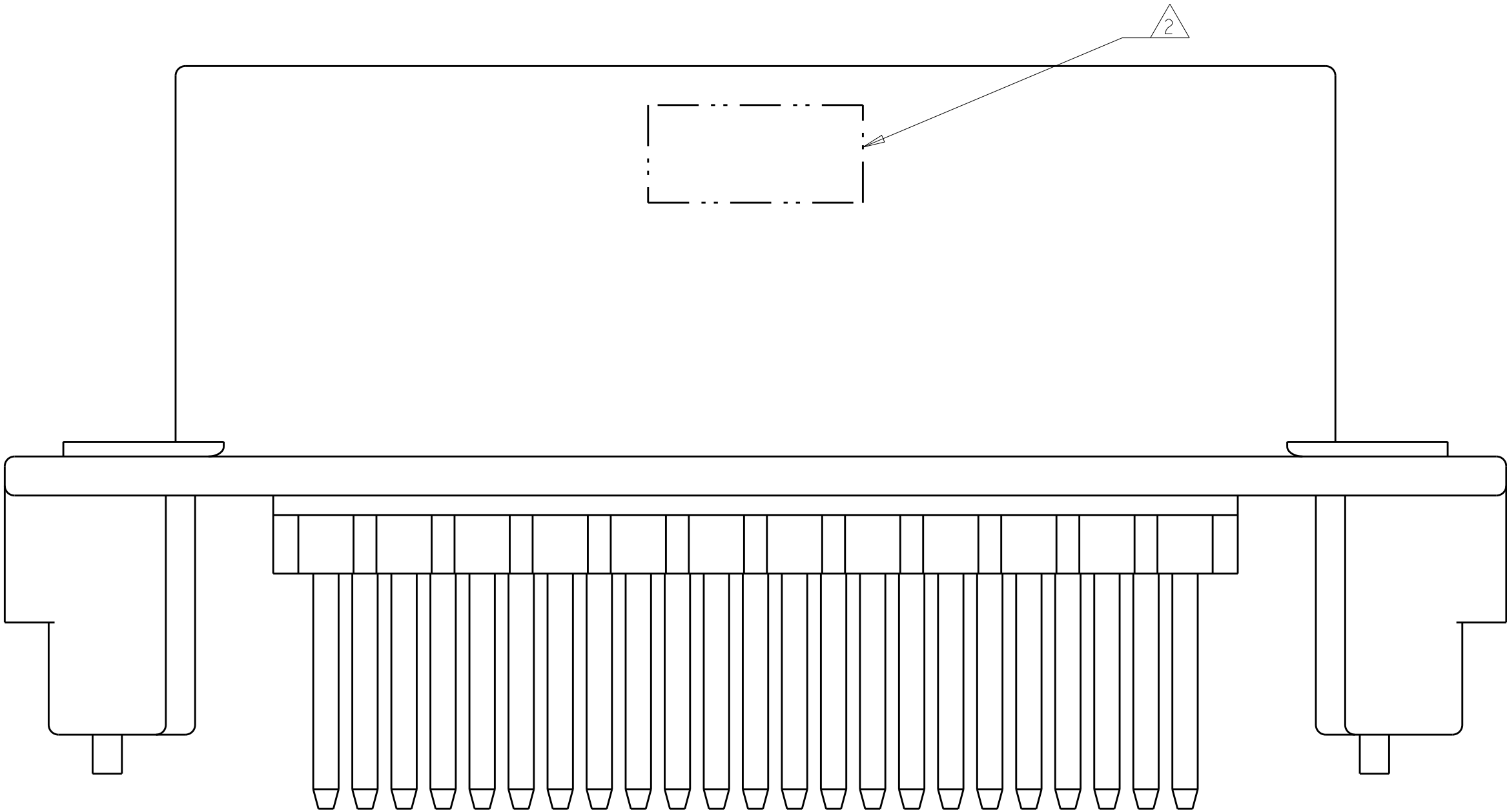
3 MATERIALS: HEADER HOUSING - GLASS FILLED PBT
PINS - TIN OR GOLD PLATED BRASS

4 HOUSING COLORS ARE MECHANICALLY KEYED TO MATE ONLY WITH IDENTICALLY COLORED PLUG ASSEMBLIES.

5. HEADER MATES TO PLUG ASSEMBLY 776164 WHICH USES REELED TERMINAL 770520 OR LOOSE PIECE TERMINAL 770854.




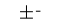


SECTION A-A

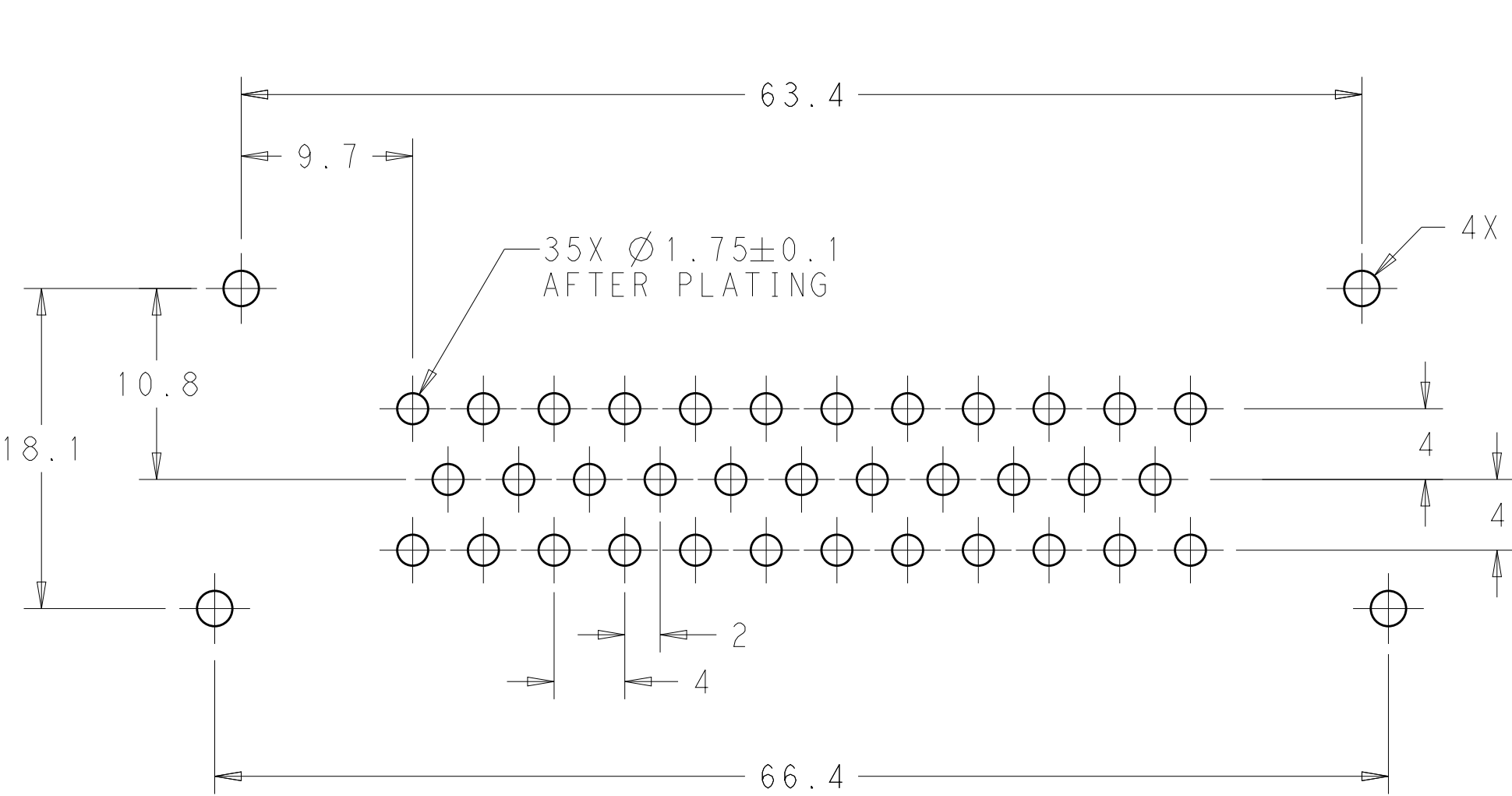


776230-1 & 1-776230-1 SHOWN

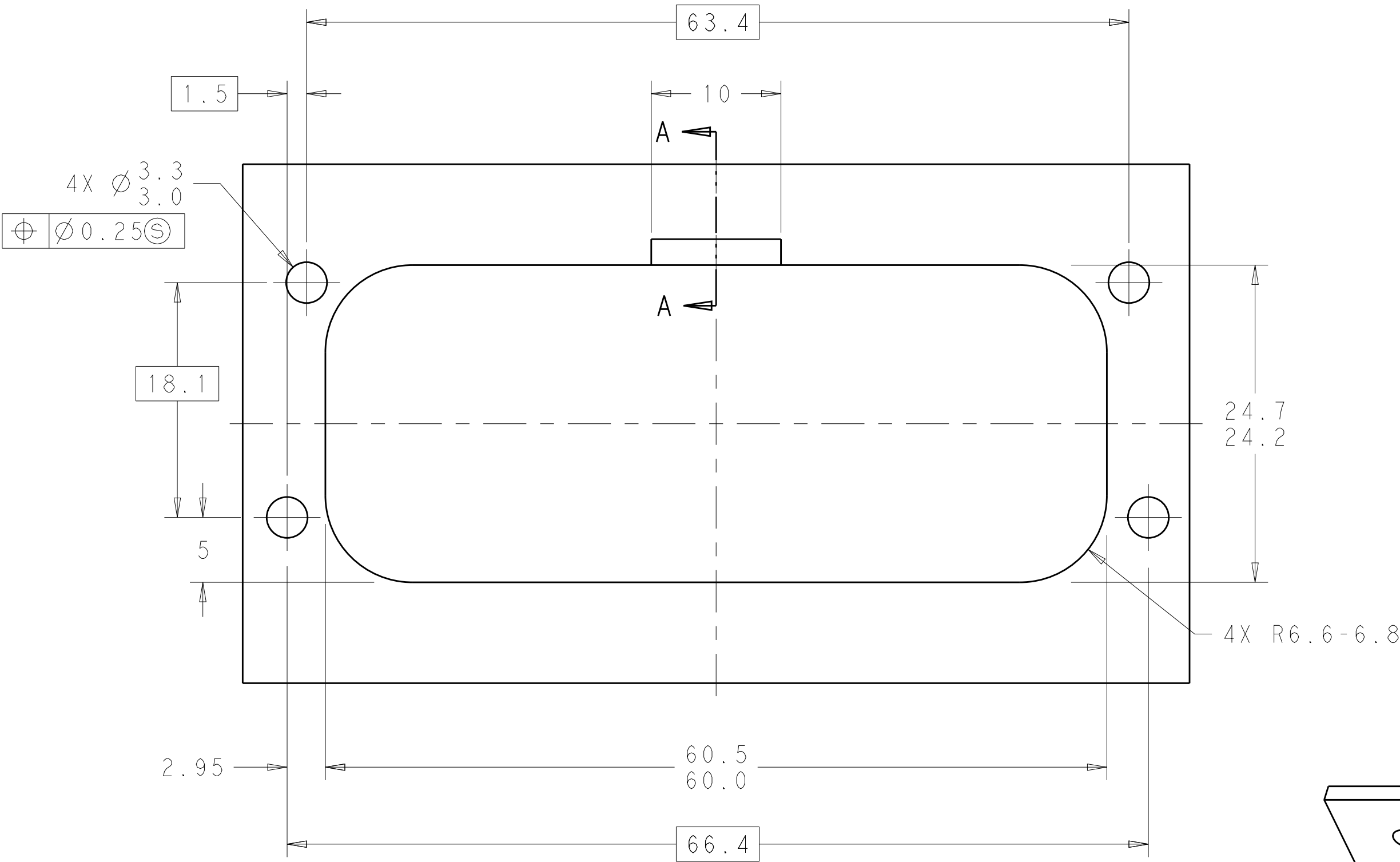
ORANGE	DURAGOLD	1-776230-6
BLUE	DURAGOLD	1-776230-5
GRAY	DURAGOLD	1-776230-4
NATURAL	DURAGOLD	1-776230-2
BLACK	DURAGOLD	1-776230-1
BLUE	TIN	776230-5
GRAY	TIN	776230-4
NATURAL	TIN	776230-2
BLACK	TIN	776230-1
HEADER COLOR 4	PLATING	PART NUMBER

THIS DRAWING IS A CONTROLLED DOCUMENT. DIMENSIONING AND TOLERANCING PER ASME Y14.5M-2009.		DWN 04FEB2010 D. STRAUSSER CHK 22MAR2010 D. STRAUSSER APVD 27APR2010 D. STRAUSSER		 TE Connectivity	
DIMENSIONS:		TOLERANCES UNLESS OTHERWISE SPECIFIED:		NAME	
mm				ASSEMBLY, HEADER, 35 POSITION, VERTICAL, AMPSEAL	
		0 PLC ±.2 1 PLC ±0.13 2 PLC ±.13 3 PLC ±.13 4 PLC ±.13 ANGLES ±.5°		PRODUCT SPEC 108-1329 APPLICATION SPEC 114-16016	
MATERIAL		FINISH		SIZE CAGE CODE DRAWING NO	
 3		 3		A100779C=776230	
CUSTOMER DRAWING				RESTRICTED TO	
				SCALE 4:1 SHEET 1 OF 2 REV A8	

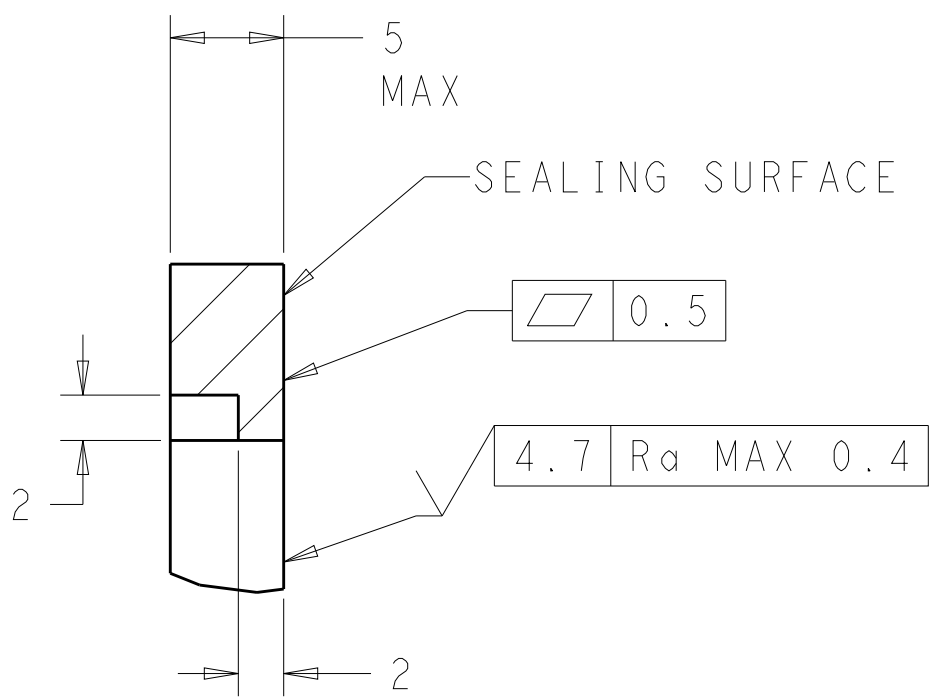
REVISIONS					
P	LTR	DESCRIPTION	DATE	DWN	APVD
-	-	SEE SHEET 1	-	-	-



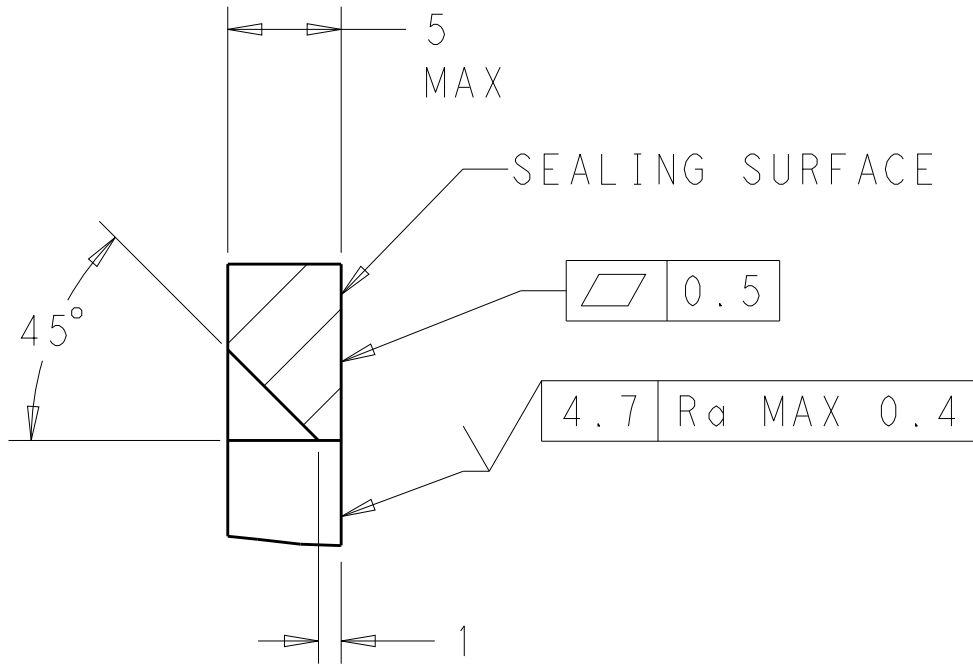
RECOMMENDED P.C. BOARD LAYOUT
FOR 1.57 THICK P.C. BOARD



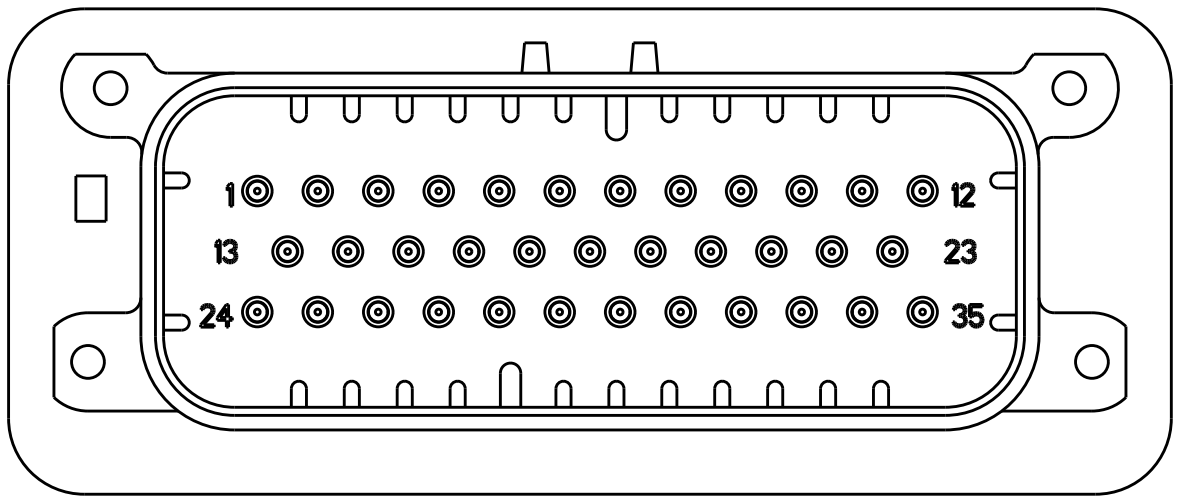
RECOMMENDED MOUNTING HOLE LAYOUT
FOR 5.0 MAX THICK PANEL



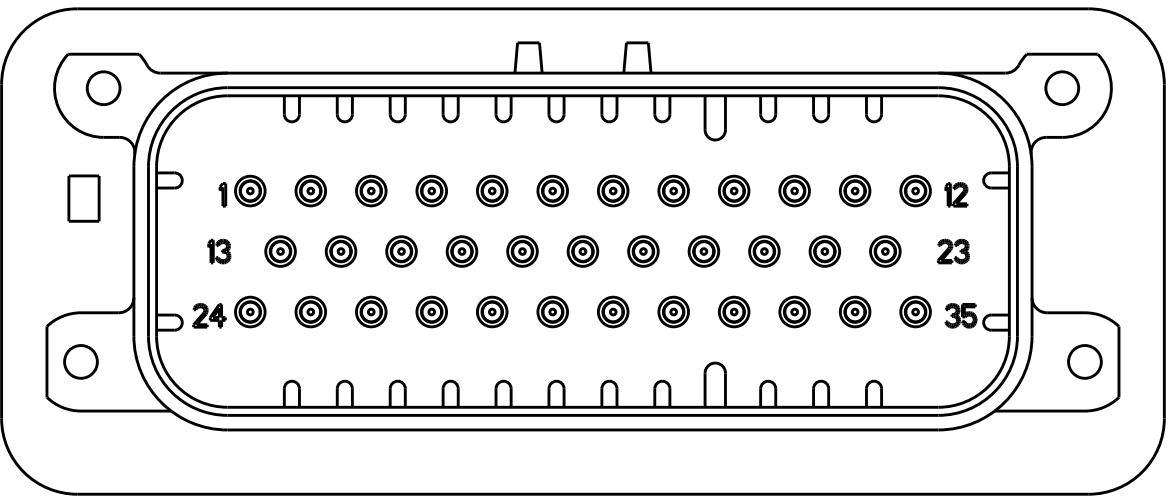
SECTION A-A
OPTIONAL CONSTRUCTION IF PANEL
THICKNESS IS GREATER THAN 2.0



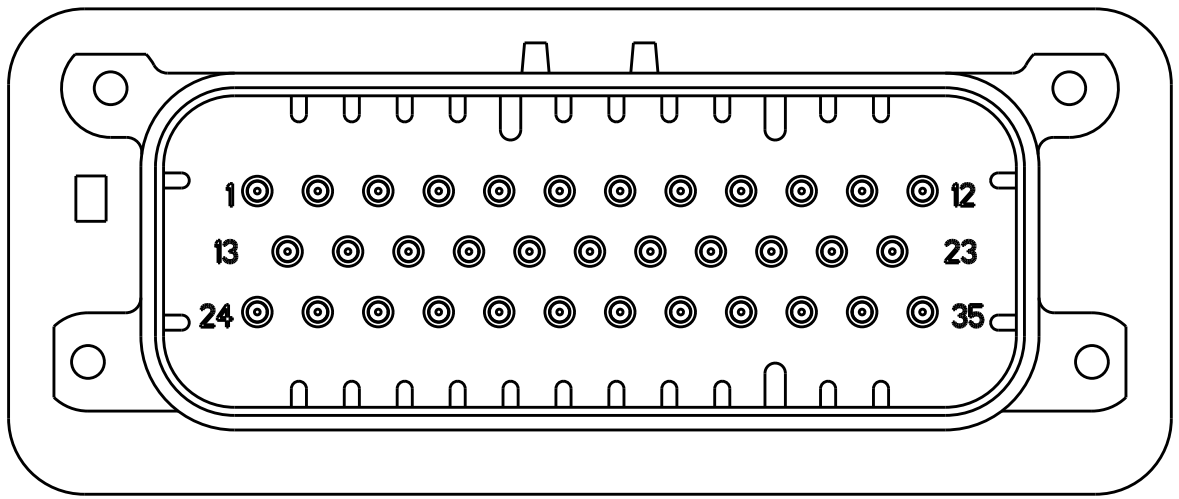
SECTION A-A
OPTIONAL CONSTRUCTION IF PANEL
THICKNESS IS GREATER THAN 2.0



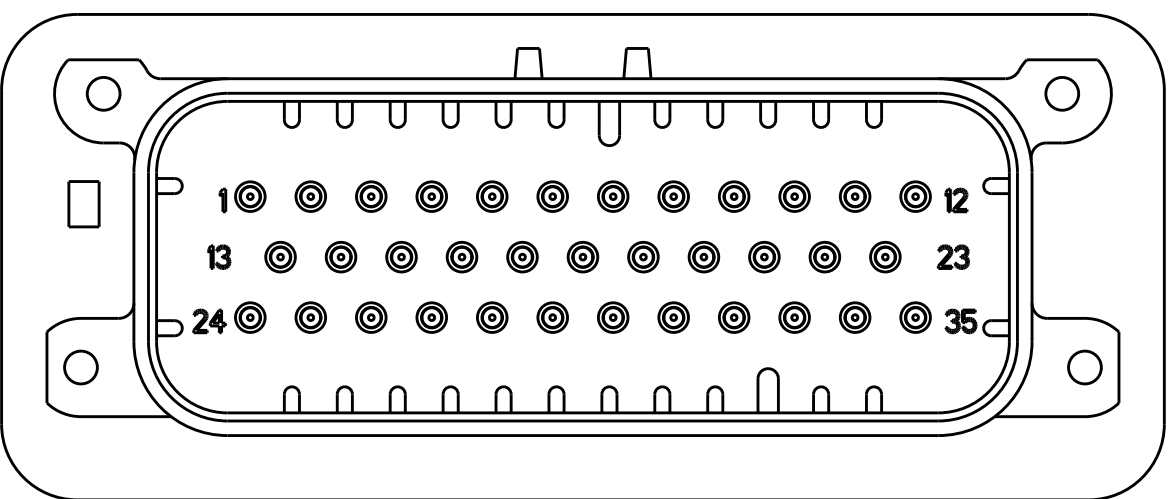
776230-2 & 1-776230-2
KEY LOCATION
SCALE 2:1



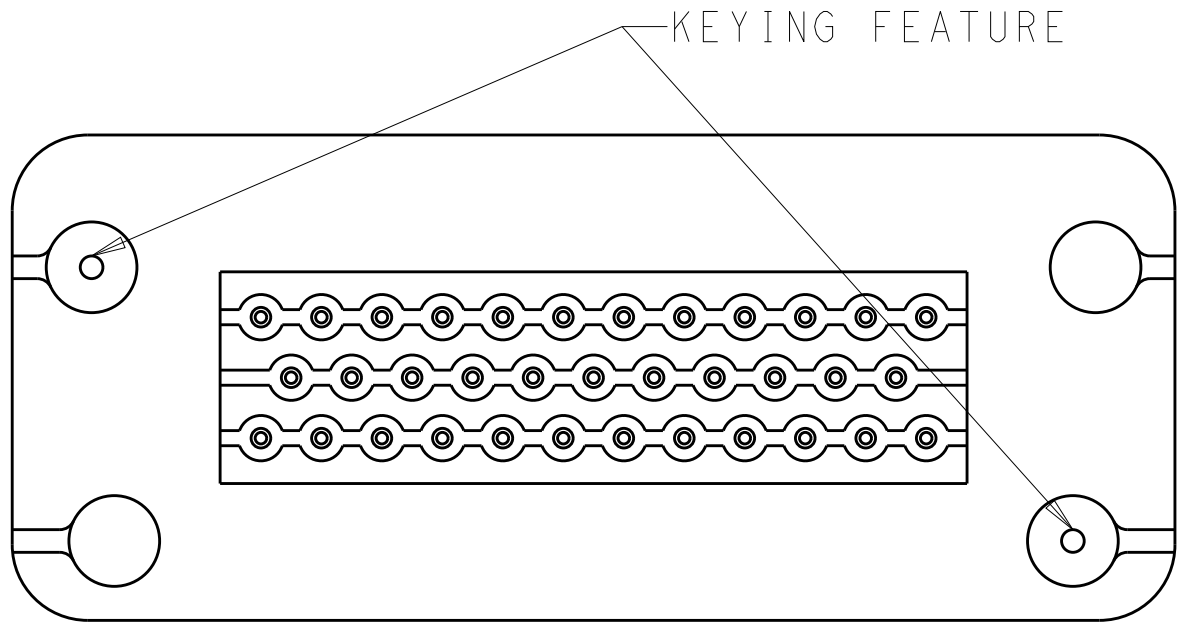
776230-4 & 1-776230-4
KEY LOCATION
SCALE 2:1



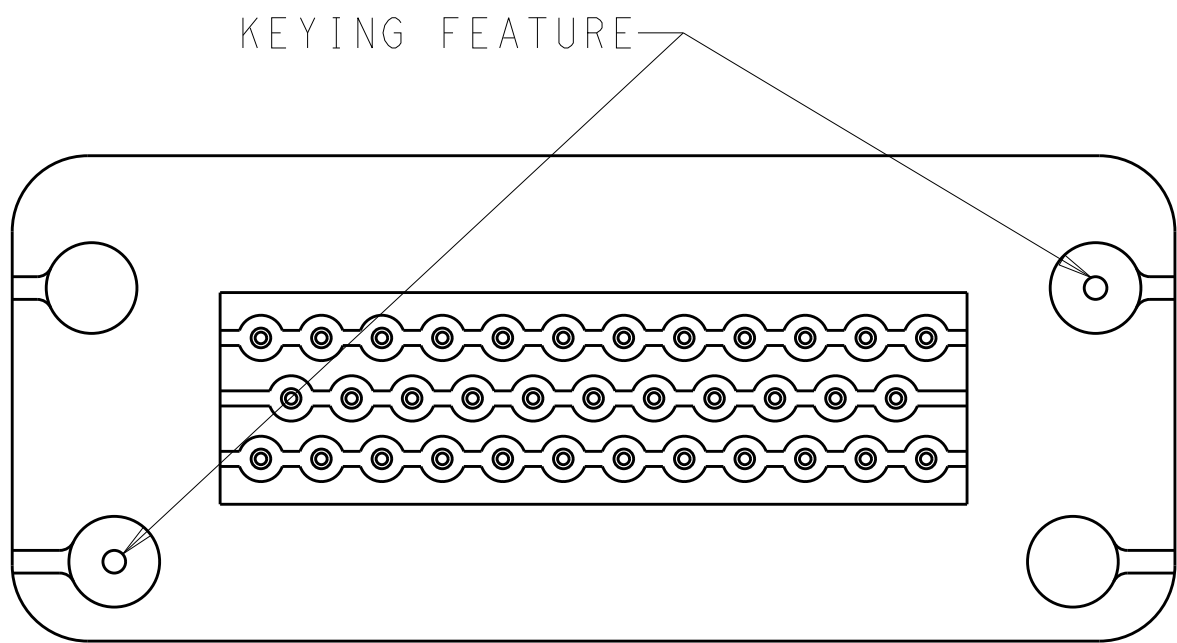
776230-5 & 1-776230-5
KEY LOCATION
SCALE 2:1



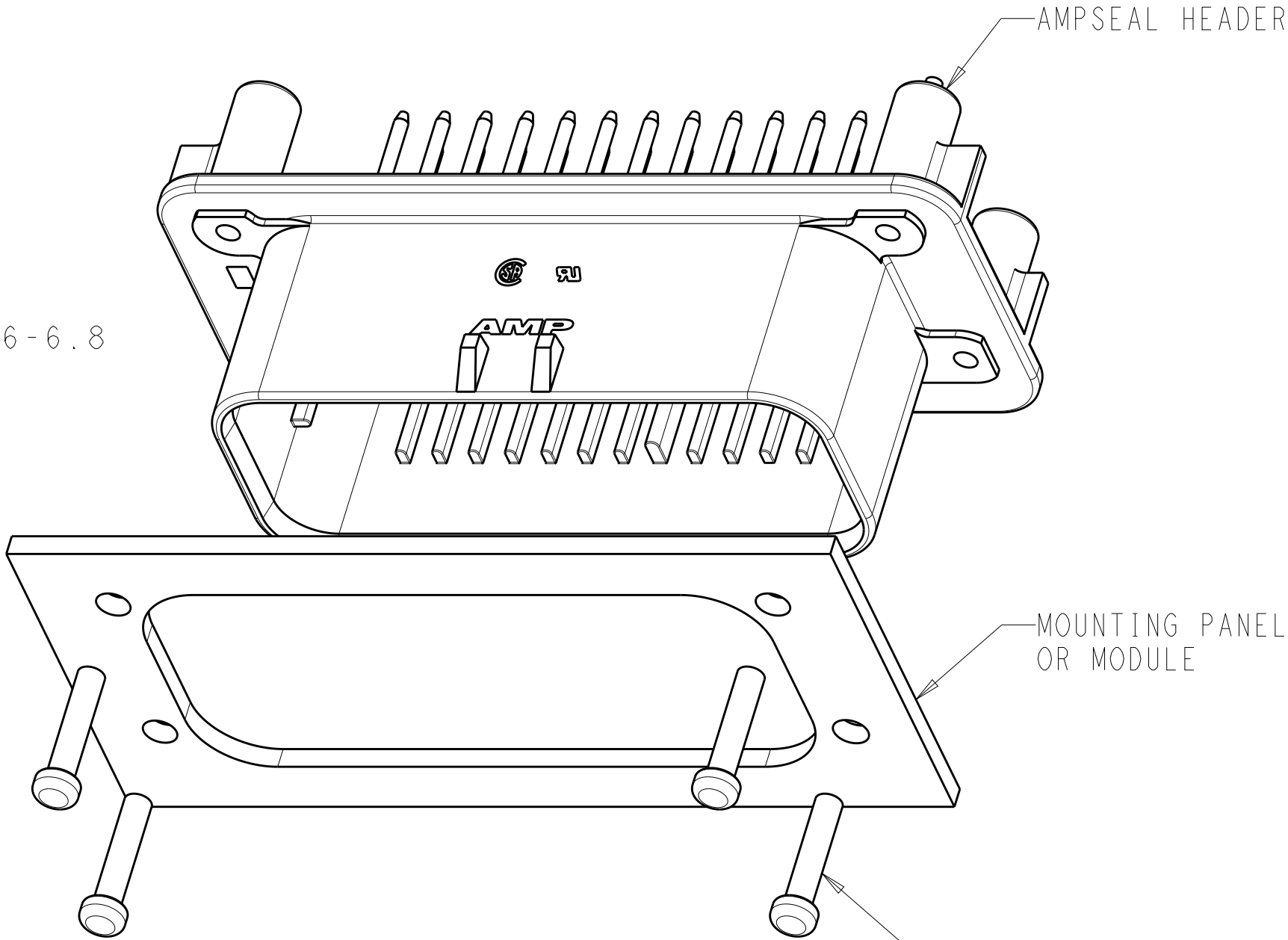
1-776230-6
KEY LOCATION
SCALE 2:1



KEYING FOR 776230-1, 1-776230-1, 776230-4,
1-776230-4 AND 1-776230-6
SCALE 2:1

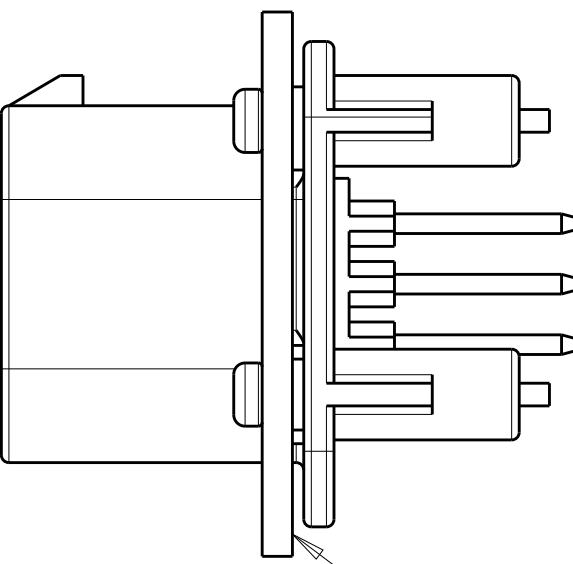


KEYING FOR 776230-2, 1-776230-2, 776230-5
AND 1-776230-5
SCALE 2:1



SCALE 2:1

MOUNTING SCREW (4)
TORQUE TO 0.6N·m TO 0.8N·m



SCALE 2:1

ENSURE THE HEADER IS FLUSH
TO THE PANEL FACE ALL AROUND
BEFORE TIGHTENING TO FINAL TORQUE

THIS DRAWING IS A CONTROLLED DOCUMENT.		DWN D. STRAUSSER CHK D. STRAUSSER APVD D. STRAUSSER	DATE 04FEB2010 22MAR2010 27APR2010	TE Connectivity	
DIMENSIONS:		TOLERANCES UNLESS OTHERWISE SPECIFIED:		NAME	
mm		0 PLC ±0.2 1 PLC ±0.2 2 PLC ±0.13 3 PLC ±0.13 4 PLC ±0.13 ANGLES ±4°		PRODUCT SPEC	
				APPLICATION SPEC	
MATERIAL		FINISH		SIZE	
-		-		114-16016	
				WEIGHT	
-		-		A100779	
				CUSTOMER DRAWING	
				SCALE	
				4:1	
				SHEET	
				2 of 2	
				REV	
				A8	