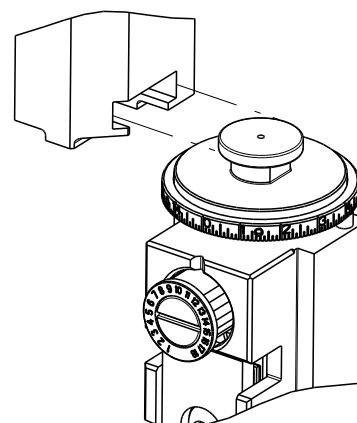







8		7	
THIS DRAWING IS UNPUBLISHED.		RELEASED FOR PUBLICATION	
COPYRIGHT 20		BY TYCO ELECTRONICS CORPORATION. ALL RIGHTS RESERVED.	
ATLANTIC VERSION TERMINATOR INTERFACE ADAPTER		PART NUMBER	REVISION
		2266129-1	A
		2266129-2	A
		2266129-5	A
		2266129-6	A
		2266129-7	A
		7-2266129-7	A
		7-2266129-8	A
		DESCRIPTION	
		FINE CRIMP HEIGHT ADJUST	
		FINE CRIMP HEIGHT ADJUST	
		FINE CRIMP HEIGHT ADJUST	
		NON-CRIMP HEIGHT ADJUST	
		FINE CRIMP HEIGHT ADJUST	
		CRIMP TOOLING KIT	
		APPLICATOR CONVERSION KIT	
APPLICATOR DATA			
CRIMP	SIZE	TYPE	
WIRE	3.28 mm [.129]	F	
INSUL	3.30 mm [.130]	O	
APPLICATOR INSTRUCTIONS 408-10389 			
APPLICATOR CONVERSION KIT			
PART NUMBER		INSULATION DIAMETER	
7-2266127-8		Ø 4.70-5.18mm [.185-.204]	
7-2266128-8		Ø 3.94-4.83mm [.155-.190]	
7-2266129-8		Ø 3.56-4.06mm [.140-.160]	

TERMINAL DATA: DEUTSCH TERMINAL DEUTSCH CRIMP SPECIFICATION			
TERMINAL NAME: STAMPED CONTACT PIN SIZE 12			
WIRE STRIP LENGTH 5.71-6.99 mm [.225-.275 IN]		INSULATION DIAMETER RANGE Ø3.56-4.06 mm [.140-.160 IN]	
TERMINAL APPLICATION SPECIFICATION 0425-041-0000 Rev E			
TERMINALS APPLIED			
TE TERMINAL	DEUTSCH TERMINAL	TE TERMINAL	DEUTSCH TERMINAL
286989-1	1060-12-0222	286989-2	1060-12-0244

WIRE SIZE			CRIMP HEIGHT mm [INCH]		CRIMP HEIGHT REFERENCE SETTING
6.00mm2			2.72±0.03/-0.05 [.107±.001/- .002]		5.4
10 AWG			2.51±0.03/-0.05 [.099±.001/- .002]		7.6
5.00mm2			2.51±0.03/-0.05 [.099±.001/- .002]		7.5
4.00mm2			2.16±0.03/-0.05 [.085±.001/- .002]		11.0



1. RECOMMENDED SPARE PARTS
2. GREASE BEARING SURFACES LIGHTLY
3. LUBRICATE DAILY PER THE APPLICATOR INSTRUCTION SHEET SUPPLIED WITH THE APPLICATOR.
4. APPLICATOR SPECIFIC DATA TO BE ENTERED INTO BLANK MEMORY CHIP AT ASSEMBLY. SEE BELOW FOR PART NUMBER:
 - MECHANICAL FEED WITH "SMART APPLICATOR" CONVERSION: 8-2266129-
 - PNEUMATIC FEED WITH "SMART APPLICATOR" CONVERSION: 8-2266129-
 - SERVO FEED WITH "FINE CRIMP HEIGHT ADJUST": 8-2266129-
 - SERVO FEED WITH "NON-CRIMP HEIGHT ADJUST": 8-2266129-
5. ADJUSTMENT OF THE STRIPPER MAY BE REQUIRED WHEN MOVING THE APPLICATOR BETWEEN BENCH AND LEADMAKER APPLICATIONS.
6. APPLY PART NUMBER 1-23419-5 LOCTITE TO THREADS OF ITEMS 62 & 242 FOR -6 ONLY APPLY PART NUMBER 1-23419-5 LOCTITE TO THREADS OF ITEM 252.
7. GREASE THREADS, GROOVE AND O-RING ON ITEMS 35 & 252.
8. MAGNET, ITEM 166 MUST BE ORIENTED CORRECTLY IN ORDER TO PROPERLY ACTUATE THE COUNTER.
9. CRIMP HEIGHT REFERENCE SETTING WAS THE SETTING USED WHEN THE APPLICATOR WAS QUALIFIED AT THE FACTORY. ADJUSTMENT MAY BE NECESSARY WHEN RUNNING APPLICATOR IN THE FIELD.
10. SPARE FEED CAM STORAGE LOCATION REFER TO INSTRUCTION SHEET FOR ADDITIONAL INFORMATION.
11. TO CONVERT THE APPLICATOR TO A NON-CARRIER CUTTING STYLE, REMOVE ITEM 13 AND ATTACH TO THE LOCATION ON THE BACK SIDE OF THE HOUSING. REFER TO INSTRUCTION SHEET FOR ADDITIONAL INFORMATION.
12. WHEN ASSEMBLING A NON CRIMP HEIGHT ADJUST APPLICATOR (-6) USE SHIMS FROM ITEM 260 TO ACHIEVE A NOMINAL SHIM HEIGHT OF 3.08.
13. DIMENSION 1.27 ± 0.50 $[0.050 \pm 0.019]$ APPLIES TO PIN TERMINALS 1060-
14. DIMENSION 7.92 ± 0.50 $[0.312 \pm 0.019]$ APPLIES TO SOCKET TERMINALS 1060-
15. CUT TO LENGTH AT ASSEMBLY.
16. SEE APPROPRIATE APPLICATOR LOG SHEETS FOR APPLIED TERMINALS, WIRING

	6		5
FEED TYPE	APPLICA		
	CONVERT TO		
MECHANICAL	PNEUMATIC FEED	2119950-1	1338685-1
	SERVO LATCH PLATE	2119951-1	-
	SMART APPLICATOR	2161326-1	-
PNEUMATIC	MECHANICAL FEED	2119949-1	1338685-1
	SERVO LATCH PLATE	2119951-1	-
	SMART APPLICATOR	2161326-1	-
SERVO LATCH PLATE	MECHANICAL FEED	2119949-1	1338685-1
	PNEUMATIC FEED	2119950-1	1338685-1
SERVO LATCH PLATE	-	-	-
NONE	-	-	-
-	-	-	-
T -			
KITS			
METER RANGE			
[.185-.204]			
[.155-.190]			
[.140-.160]			
TERMINAL DATA: DEUTSCH TERMINAL DEUTSCH CRIMP SPECIFICATION			
TERMINAL NAME: STAMPED CONTACT SOCKET SIZE 12			
WIRE STRIP LENGTH		INSULATION DIAMETER RANGE	
5.71-6.99 mm [.225-.275 IN]		\varnothing 3.56-4.06 mm [.140-.160 IN]	
TERMINAL APPLICATION SPECIFICATION	0425-041-0000 Rev E	-	-
	-	-	-
TERMINALS APPLIED			
TE TERMINAL	DEUTSCH TERMINAL	TE TERMINAL	DEUTSCH TERMINAL
286988-1	1062-12-0222	286988-2	1062-12-0244

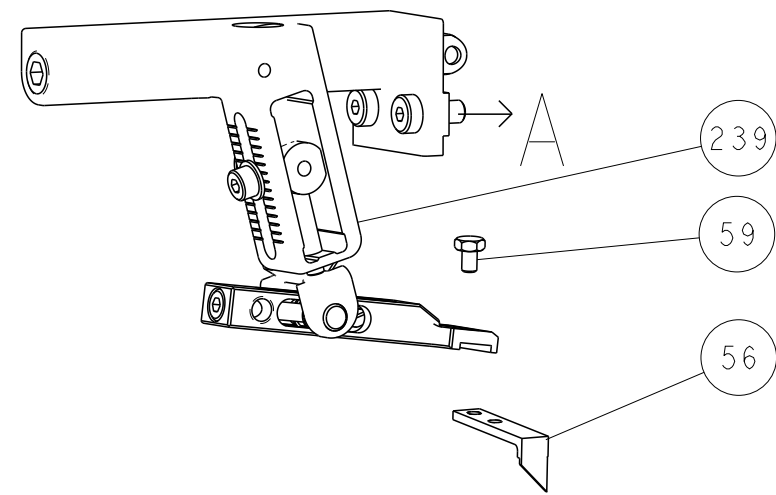
-	-	-	1	-	-	-	2119957-2	APPLICATOR SHIM PACK	260
-	-	1	-	1	1	1	8-21084-0	O-RING, .676 ID, .070 DIA. MAT.	252
-	-	-	-	-	1	-	2119640-1	PUSH ROD, AIR FEED	250
-	-	-	-	-	1	-	2079988-1	BUSHING, LCH5-12, MISUMI	249
-	-	-	-	-	1	-	2119641-1	FEED CAM, AIR FEED	248
-	-	1	-	1	1	1	2119798-1	DETENT PIN	247
-	-	1	-	1	1	1	1-22279-3	SPRING, COMPRESSION	246
-78	-77	-7	-6	-5	-2	-1	PART NO	DESCRIPTION	ITEM NO

ATLANTIC VERSION
Shown on sheets 1 of 4 & 2 of 4
(Pacific version shown on sheets 3 of 4 & 4 of 4)

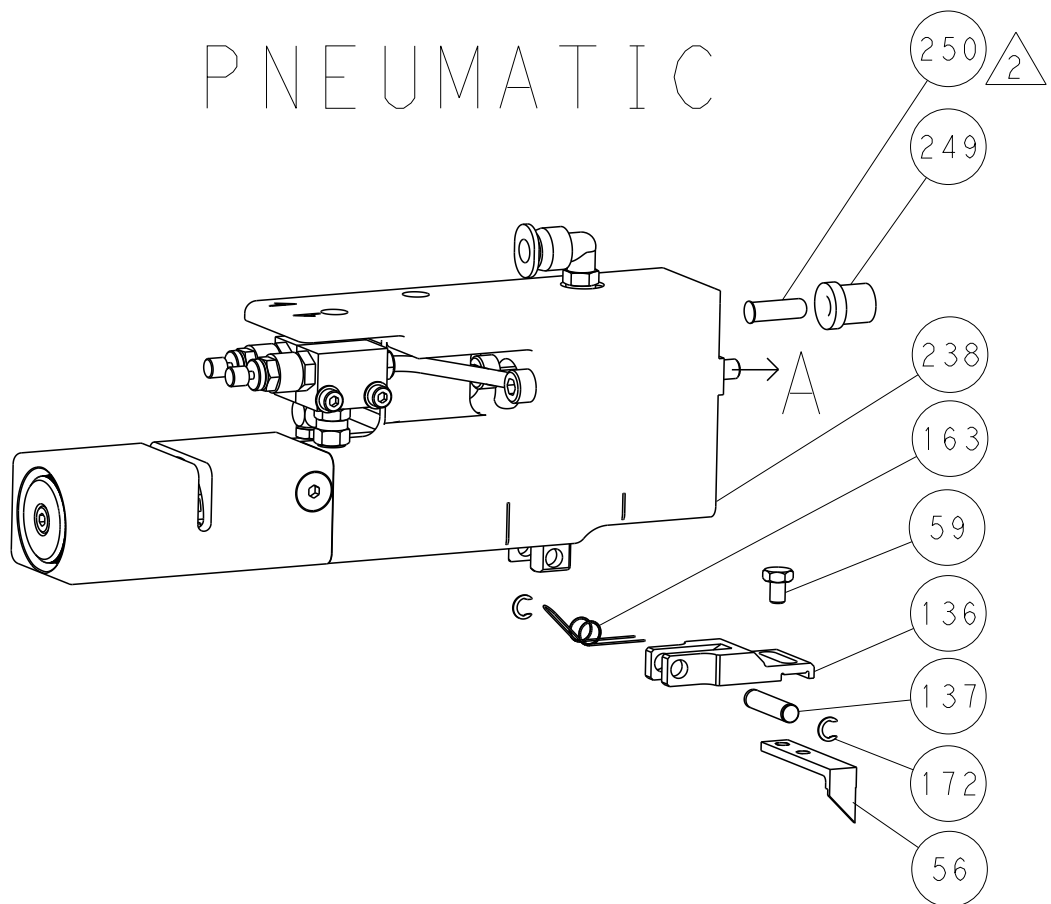
SET UP GAUGE 2119599-1							LOC A	DIST 66	REVISIONS				
P	LTR	DESCRIPTION					DATE	DWN	APVD				
A1		ECR-14-008355					04JUN2014	RK	GB				
-	-	-	1	-	-	-	2119758-1	RAM, AMP STYLE, SIDE FEED, NON-ADJ.	245				
-	-	1	1	1	1	1	2119082-9	CAM, SNAIL, INSULATION ADJUSTMENT	244				
-	-	1	1	1	1	1	2079764-1	WASHER, WAVE SPRING, CREST-TO-CREST	243				
-	-	1	1	1	1	1	2119083-1	RETAINER, INSULATION DIAL	242				
-	-	1	1	1	1	1	7-18023-7	SCR, SKT HD CAP M3 X 4.0	241				
-	-	-	2	2	-	-	2168400-6	SHCS, LOW HEAD, RoHS, M5 X 16	240				
-	-	-	-	-	-	1	2119580-1	MECHANICAL FEED ASSEMBLY	239				
-	-	-	-	-	1	-	2063440-1	AIR FEED MODULE	238				
-	-	-	1	1	-	-	2119740-2	TAG, IDENTIFICATION	213				
-	-	-	1	1	-	-	1901094-3	SPACER, FEEDER	198				
-	-	-	-	-	2	-	21045-3	RING, RETAIN, EXTERN, 3/16 CRESCENT	172				
-	-	1	1	1	1	1	994969-1	MAGNET, RARE EARTH HIGH ENERGY	166				
-	-	REF	REF	REF	REF	REF	994970-2	COUNTER, MAGNETIC	164				
-	-	-	-	-	1	-	240638-1	SPRING, FEED FINGER	163				
-	-	-	-	-	1	-	3-23627-7	PIN, RETAIN, GRVD, 3/16 X .854	137				
-	-	-	-	-	1	-	2119799-1	HOLDER, FEED FINGER, AF	136				
-	-	-	REF	REF	-	-	SEE NOTE 4	MEMORY CHIP, PROGRAMMED	135				
-	-	-	1	1	-	-	1633743-1	SERVO FEED LATCH ASM	133				
-	-	1	1	1	1	1	1-18028-2	WASHER, FLAT, REG M4	119				
-	-	-	REF	REF	-	-	2119944-1	FEED FINGER ASSEMBLY, SF	117				
-	-	1	1	1	1	1	455888-5	SPACER, CRIMPER	82				
-	-	1	1	1	1	1	5-547505-2	SPRING, COMPRESSION	77				
-	-	1	1	1	1	1	854769-4	HOLDER, INS	74				
1	-	-	-	-	-	-	2266129	PRINT, APPLICATOR LOG SHEET	72				
-	-	1	1	1	1	1	2119956-1	DOCUMENTATION PACKAGE	71				
-	-	1	1	1	1	1	2119791-9	DEPRESSOR, WIRE	70				
-	-	1	-	-	1	1	2119740-1	TAG, IDENTIFICATION	67				
-	-	2	2	2	2	2	2168078-1	SCREW, DRIVE, RH, RoHS, 2 x .188	66				
-	-	1	-	1	1	1	2119793-1	LIMITER, ADJUSTMENT BOLT	63				
-	-	3	-	3	3	3	992763-5	SCR, SET, SOC, CONE POINT, M3 x 4.0	62				
-	-	1	1	1	1	1	2079383-4	SCR, BHSC, RoHS (M4 X 8)	60				
-	-	-	-	-	1	1	5-18022-5	SCR, HEX HD CAP, M4 X 6.0	59				
-	-	1	1	1	1	1	21028-2	PIN, SLOTTED SPRING .062 X .250	58				
-	-	-	-	-	1	1	1338685-1	PAWL, FEED	56				
-	-	4	4	4	4	4	2168400-1	SHCS, LOW HEAD, RoHS, M4 X 12	54				
-	-	2	2	2	2	2	2168083-8	SCR, SKT HD CAP, RoHS, M4 X 16	53				
-	-	1	1	1	1	1	5018030-1	NUT, HEX, REG, RoHS, M3	52				
-	-	1	1	1	1	1	811242-5	BUMPER, HOLD DOWN	51				
-	-	1	1	1	1	1	690753-2	SPACER, TONKER	50				
-	-	-	-	-	1	2	18023-9	SCR, SKT HD CAP M4 X 6.0	49				
-	-	-	-	-	-	1	2119652-1	FEED CAM, PRE FEED	48				
-	-	-	-	-	-	1	2119653-1	FEED CAM, POST FEED	47				
-	-	1	1	1	1	1	2119656-9	APPLICATOR BASIC ASSEMBLY, SF	46				
-	-	1	-	1	1	1	2119370-1	RAM, AMP STYLE, SIDE FEED	44				
-	-	1	1	1	1	1	2079383-7	SCR, BHSC, RoHS (M8 X 25)	41				
-	-	1	-	1	1	1	2119645-1	DISC, NUMBERED FA WIRE ADJUSTMENT	40				
-	-	1	-	1	1	1	2119957-1	APPLICATOR SHIM PACK	39				
-	-	1	1	1	1	1	2119644-3	RAM WASHER, PRECISION	38				
-	-	1	1	1	1	1	2119085-1	FA HEAD, ATLANTIC STYLE	37				
-	-	1	-	1	1	1	2119092-1	BOLT, ADJUSTMENT	35				
-	-	1	1	1	1	1	1752356-6	SUPPORT, TERMINAL	34				
-	-	2	2	2	2	2	2079383-5	SCR, BHSC, RoHS (M4 X 20)	33				
-	-	1	1	1	1	1	2161328-1	HEX HEAD, FLANGED, M5 x 8mm LONG	32				
-	-	1	1	1	1	1	1-1320908-0	SPACER, STRIP GUIDE	30				
-	-	1	1	1	1	1	2119959-1	ASSEMBLY, STRIP GUIDE	29				
-	-	1	1	1	1	1	455888-3	SPACER, CRIMPER	28				
-	-	1	1	1	1	1	1320928-6	STRIP GUIDE	24				
-	-	1	1	1	1	1	2168083-2	SCR, SKT HD CAP, RoHS, M4 X 8.0	21				
-	-	1	1	1	1	1	1-18028-2	WASHER, FLAT, REG M4	20				
-	-	1	1	1	1	1	2119533-1	STRIPPER, SIDE FEED	19				
-	-	1	1	1	1	1	2119806-1	INSERT, SHEAR	13				
-	-	1	1	1	1	1	3-22280-3	SPRING, COMPRESSION	12				
-	-	1	1	1	1	1	1-356885-4	STOP, SHEAR	11				
-	-	1	1	1	1	1	2119805-1	SHEAR HOLDER, FRONT	10				
-	-	1	1	1	1	1	1803095-1	FLOATING SHEAR, FRONT	9				
1	1	1	1	1	1	1	3-1803054-6	ANVIL, COMBINATION	8				
-	-	1	1	1	1	1	4-240641-6	SPACER	7				
-	-	-	-	-	-	-	-	-	6				
-	-	1	1	1	1	1	1-2119780-4	DEPRESSOR, SHEAR	5				
-	-	1	1	1	1	1	238011-2	BLOCK, CRIMPER SPACER	4				
1	1	1	1	1	1	1	3-1803019-1	CRIMPER, INSULATION O	3				
-	-	1	1	1	1	1	455888-4	SPACER, CRIMPER	2				
-	-	1	1	1	1	1	4-1633713-7	CRIMPER, WIRE PREMIUM	1				
-78	-77	-7	-6	-5	-2	-1	PART NO	DESCRIPTION	ITEM NO				
PART DRAWING IS A COMBINED DOCUMENT FOR THE FOLLOWING INFORMATION: IT IS SUBJECT TO CHANGE AND THE CUSTOMER/ENGINEERING ORGANIZATION SHOULD BE CONTACTED FOR THE LATEST REVISION.							DWN R. KNEPPER 21-Oct-13	TE Connectivity Harrisburg, PA 17105-3608					
DIMENSIONS:							CHK G. BAILEY 21-Oct-13	NAME					
TOLERANCES UNLESS OTHERWISE SPECIFIED:							APVD M. CLIFFORD 21-Oct-13	Ocean Side Feed Applicator					
mm							PRODUCT SPEC	SIZE					
0 PLC ±.1							APPLICATION SPEC	CAGE CODE					
1 PLC ±0.13							WEIGHT	DRAWING NO					
2 PLC ±0.013								A1 00779 C-2266129					
3 PLC ±0.013								RESTRICTED TO					
4 PLC ±0.0001													
ANGLES ±.1													
MATERIAL													
FINISH													

LOC		DIST		REVISONS				
A	66	P	LTR	DESCRIPTION	DATE	DWN	APVD	
		-		SEE SHEET 1	-	-	-	

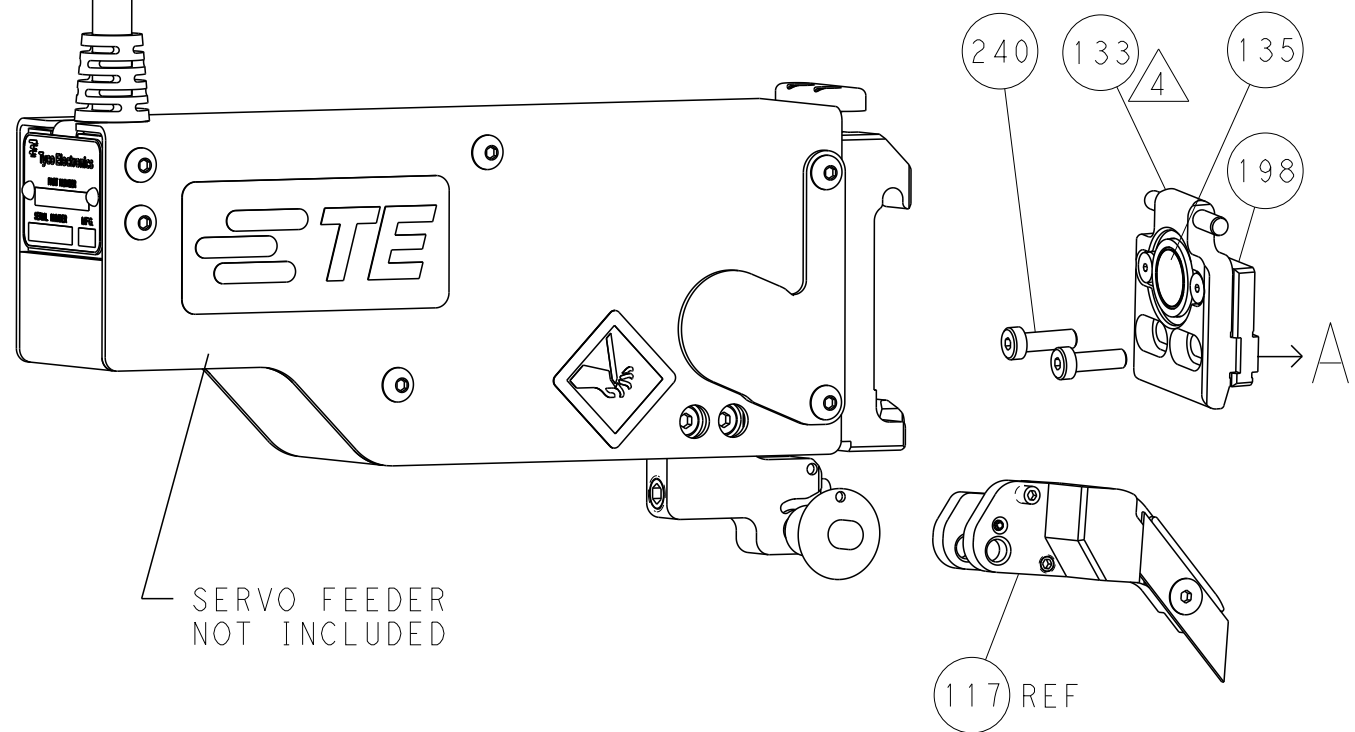
FEED TYPE
MECHANICAL



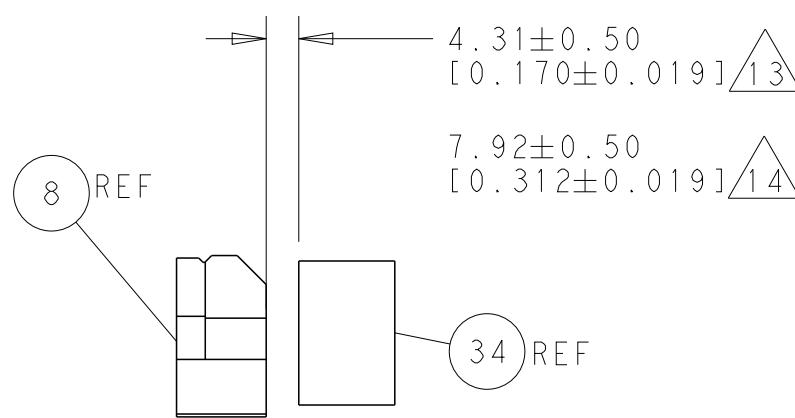
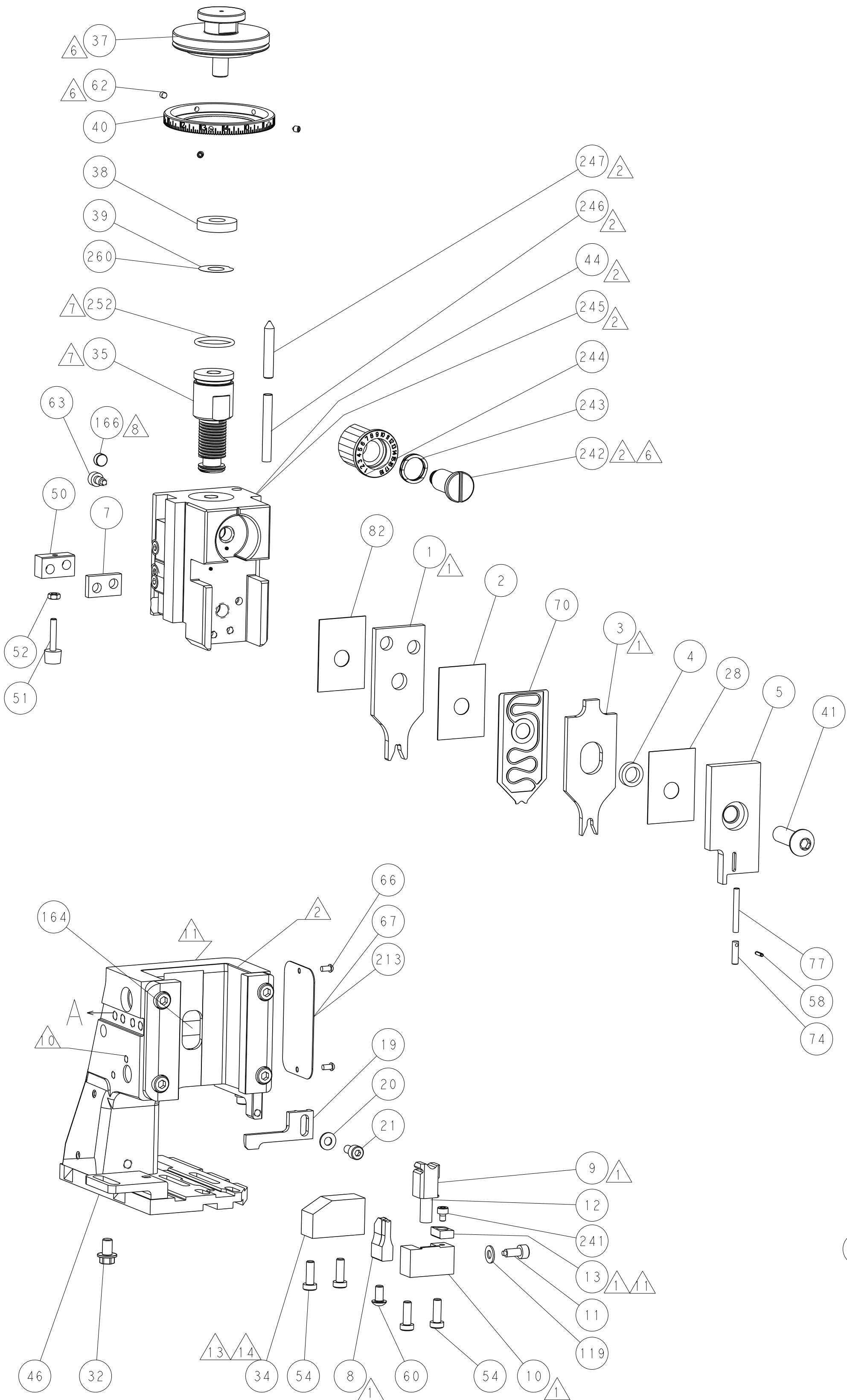
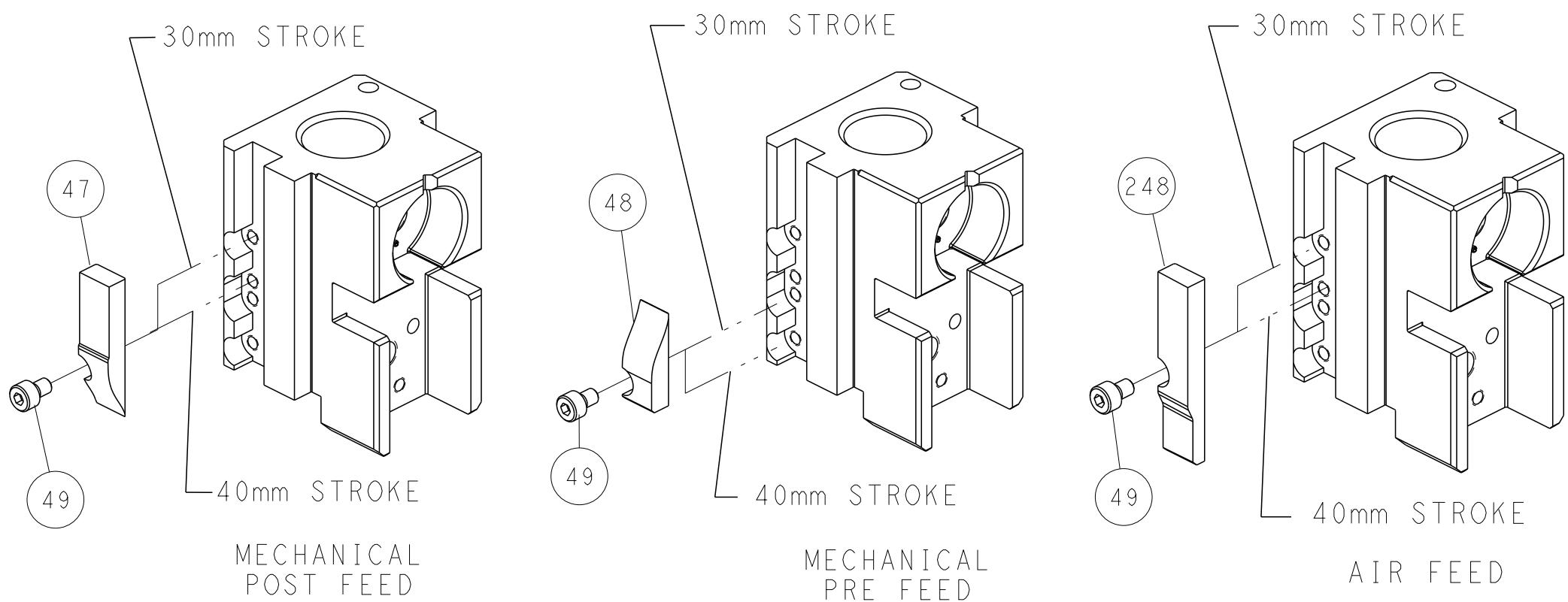
PNEUMATIC



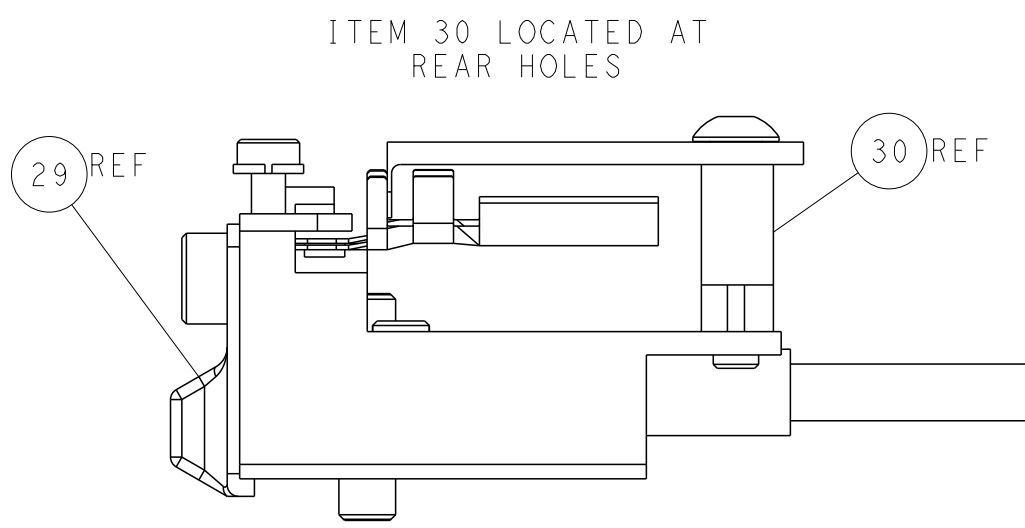
SERVO
LATCH PLATE



CAM POSITIONS



TERMINAL SUPPORT LOCATION







FEED TRACK POSITION
GUIDE BY INSULATION BARREL

ATLANTIC VERSION
Shown on sheets 1 of 4 & 2 of 4
(Pacific version shown on sheets 3 of 4 & 4 of 4)

THIS DRAWING IS UNPUBLISHED. IT IS SUBJECT TO CHANGE WITHOUT NOTICE. IT IS THE RESPONSIBILITY OF THE USER TO VERIFY THE LATEST VERSION OF THIS DRAWING.				DWN R. KNEPPER 21-Oct-13				TE Connectivity			
CHK G. BAILEY 21-Oct-13				APVD M. CLIFFORD 21-Oct-13				Harrisburg, PA 17105-3608			
PRODUCT SPEC				NAME				Ocean Side Feed			
APPLICATION SPEC				SIZE				Applicator			
MATERIAL				WEIGHT				Customer Accessible Production Drawing			
FINISH				SCALE				1:2			
				SHEET				2 of 4			
				REV				A1			


8		7	
THIS DRAWING IS UNPUBLISHED.		RELEASED FOR PUBLICATION	
20		20	
© COPYRIGHT 20 BY TYCO ELECTRONICS CORPORATION. ALL RIGHTS RESERVED.			




PACIFIC VERSION TERMINATOR INTERFACE ADAPTER	PART NUMBER	REVISION	DESCRIPTION	FEED TYPE
	2-2266129-1	A	FINE CRIMP HEIGHT ADJUST	MECHANICAL
	2-2266129-2	A	FINE CRIMP HEIGHT ADJUST	PNEUMATIC
	2-2266129-5	A	FINE CRIMP HEIGHT ADJUST	SERVO LATCH PLATE 
	2-2266129-7	A	FINE CRIMP HEIGHT ADJUST	NONE
	7-2266129-7	A	CRIMP TOOLING KIT	-
	7-2266129-8	A	APPLICATOR CONVERSION KIT	- 

APPLICATOR DATA		
CRIMP	SIZE	TYPE
WIRE	3.28 mm [.129]	F
INSUL	3.30 mm [.130]	O
APPLICATOR INSTRUCTIONS 408-10389		

15	APPLICATOR CONVERSION KITS	
PART NUMBER	INSULATION DIAMETER RANGE	
7-2266127-8	Ø 4.70-5.18mm [.185-.204]	
7-2266128-8	Ø 3.94-4.83mm [.155-.190]	
7-2266129-8	Ø 3.56-4.06mm [.140-.160]	

TERMINAL DATA: DEUTSCH TERMINAL DEUTSCH CRIMP SPECIFICATION			
TERMINAL NAME: STAMPED CONTACT PIN SIZE 12			
WIRE STRIP LENGTH 5.71-6.99 mm [.225-.275 IN]		INSULATION DIAMETER RANGE Ø3.56-4.06 mm [.140-.160 IN]	
TERMINAL APPLICATION SPECIFICATION 0425-041-0000 Rev E			
TERMINALS APPLIED			
TE TERMINAL		DEUTSCH TERMINAL	
286989-1		1060-12-0222	
TE TERMINAL		DEUTSCH TERMINAL	
286989-2		1060-12-0244	

TERMINAL DATA: DEUTSCH TERMINAL DEUTSCH CRIMP SPECIFICATION			
TERMINAL NAME: STAMPED CONTACT SOCKET SIZE 12			
WIRE STRIP LENGTH 5.71-6.99 mm [.225-.275 IN]		INSULATION DIAMETER RANGE Ø3.56-4.06 mm [.140-.160 IN]	
TERMINAL APPLICATION SPECIFICATION		0425-041-0000 Rev E	
-		-	
TERMINALS APPLIED 			
TE TERMINAL	DEUTSCH TERMINAL	TE TERMINAL	DEUTSCH TERMINAL
286988-1	1062-12-0222	286988-2	1062-12-0244

WIRE SIZE			CRIMP HEIGHT mm [INCH]		CRIMP HEIGHT REFERENCE SETTING
6.00mm2			2.72±0.03/-0.05 [.107±.001/- .002]		5.4
10 AWG			2.51±0.03/-0.05 [.099±.001/- .002]		7.6
5.00mm2			2.51±0.03/-0.05 [.099±.001/- .002]		7.5
4.00mm2			2.16±0.03/-0.05 [.085±.001/- .002]		11.0



- RECOMMENDED SPARE PARTS

- 2 GREASE BEARING SURFACES LIGHTLY

3. LUBRICATE DAILY PER THE APPLICATOR INSTRUCTION SHEET SUPPLIED WITH THE APPLICATOR.

- 4 APPLICATOR SPECIFIC DATA TO BE ENTERED INTO BLANK MEMORY CHIP AT
ASSEMBLY. SEE BELOW FOR PART NUMBER:
MECHANICAL FEED WITH "SMART APPLICATOR" CONVERSION: 8-2266129-4
PNEUMATIC FEED WITH "SMART APPLICATOR" CONVERSION: 8-2266129-4
SERVO FEED WITH "FINE CRIMP HEIGHT ADJUST": 8-2266129-5

5. ADJUSTMENT OF THE STRIPPER MAY BE REQUIRED WHEN MOVING THE APPLICATOR BETWEEN BENCH AND LEADMAKER APPLICATIONS.

- 6 APPLY PART NUMBER 1-23419-5 LOCTITE TO THREADS OF ITEMS 62 & 242.

- 7 GREASE THREADS, GROOVE AND O-RING ON ITEMS 139 & 152.

- 8 MAGNET MUST BE ORIENTED CORRECTLY IN ORDER TO PROPERLY ACTUATE THE COUNTER.

- 9 CRIMP HEIGHT REFERENCE SETTING WAS THE SETTING USED WHEN THE APPLICATOR WAS QUALIFIED AT THE FACTORY. ADJUSTMENT MAY BE NECESSARY WHEN RUNNING APPLICATOR IN THE FIELD.

- 10 SPARE FEED CAM STORAGE LOCATION REFER TO INSTRUCTION SHEET
FOR ADDITIONAL INFORMATION.

- 11 TO CONVERT THE APPLICATOR TO A NON-CARRIER CUTTING STYLE, REMOVE ITEM 13 AND ATTACH TO THE LOCATION ON BACK SIDE OF THE HOUSING. REFER TO INSTRUCTION SHEET FOR ADDITIONAL INFORMATION.

- 12 DIMENSION 1.27 ± 0.50 [0.050 ± 0.019] APPLIES TO PIN TERMINALS 1060-12-02XX.

- 13 DIMENSION 7.92 ± 0.50 [0.312 ± 0.019] APPLIES TO SOCKET TERMINALS 1062-12-02XX.

- CUT TO LENGTH AT ASSEMBLY.

- 15 SEE APPROPRIATE APPLICATOR LOG SHEETS FOR APPLIED TERMINALS, WIRE RANGE AND MEMORY CHIP.

-	-	1	1	1	1	2119782-1	FINE ADJUST HEAD ASM, PACIFIC STYLE	251
-	-	-	-	1	-	2119640-1	PUSH ROD, AIR FEED	250
-	-	-	-	1	-	2079988-1	BUSHING, LCH5-12, MISUMI	249
-	-	1	1	1	1	1-22279-3	SPRING, COMPRESSION	246
-	-	1	1	1	1	2119082-9	CAM, SNAIL, INSULATION ADJUSTMENT	244
-78	-77	-27	-25	-22	-21	PART NO	DESCRIPTION	ITEM NO

PACIFIC VERSION
Shown on sheets 3 of 4 & 4 of 4
(Atlantic version shown on sheets 1 of 4 & 2 of 4)

				LOC	DIST	REVISIONS					
SET UP GAUGE 2119599-1				A	66	P	LTR	DESCRIPTION	DATE	DRN	APVD
						-	-	SEE SHEET 1	-	-	-
6	-	-	1	1	1	1	2079764-1	WASHER, WAVE SPRING, CREST-TO-CREST	243		
	-	-	1	1	1	1	2119083-1	RETAINER, INSULATION DIAL	242		
	-	-	1	1	1	1	7-18023-7	SCR, SKT HD CAP M3 X 4.0	241		
	-	-	-	2	-	-	2168400-6	SHCS, LOW HEAD, RoHS, M5 X 16	240		
	-	-	-	-	-	1	2119580-1	MECHANICAL FEED ASSEMBLY	239		
	-	-	-	-	1	-	2063440-1	AIR FEED MODULE	238		
	-	-	-	1	-	-	2119740-2	TAG, IDENTIFICATION	213		
	-	-	-	1	-	-	1901094-3	SPACER, FEEDER	198		
	-	-	-	-	2	-	21045-3	RING, RETAIN, EXTERN, 3/16 CRESCENT	172		
	-	-	1	1	1	1	994969-1	MAGNET, RARE EARTH HIGH ENERGY	166		
	-	-	REF	REF	REF	REF	994970-2	COUNTER, MAGNETIC	164		
	-	-	-	-	1	-	240638-1	SPRING, FEED FINGER	163		
	-	-	1	1	1	1	8-21084-1	O-RING, .801 ID, .070 DIA. MAT.	152		
	-	-	-	-	1	-	2119641-2	FEED CAM, AIR FEED	151		
	-	-	1	1	1	1	2119798-2	DETENT PIN	145		
	-	-	1	1	1	1	2079383-8	SCR, BHSC, RoHS (M4 X 16)	144		
	-	-	4	4	4	4	2168400-5	SHCS, LOW HEAD, RoHS, M4 X 20	143		
	-	-	-	-	-	1	2119653-2	FEED CAM, POST FEED	142		
	-	-	1	1	1	1	1-2119656-0	APPLICATOR BASIC ASSEMBLY, SF	141		
	-	-	1	1	1	1	2119650-1	RAM, ASIAN STYLE, SIDE FEED	140		
	-	-	1	1	1	1	2119092-2	BOLT, ADJUSTMENT	139		
	-	-	-	-	1	-	3-23627-7	PIN, RETAIN, GRVD, 3/16 X .854	137		
	-	-	-	-	1	-	2119799-1	HOLDER, FEED FINGER, AF	136		
	-	-	-	REF	-	-	SEE NOTE 4	MEMORY CHIP, PROGRAMMED	135		
	-	-	-	1	-	-	1633743-1	SERVO FEED LATCH ASM	133		
	-	-	1	1	1	1	1-18028-2	WASHER, FLAT, REG M4	119		
	-	-	-	REF	-	-	2119944-1	FEED FINGER ASSEMBLY, SF	117		
	-	-	1	1	1	1	455888-5	SPACER, CRIMPER	82		
	-	-	1	1	1	1	5-547505-2	SPRING, COMPRESSION	77		
	-	-	1	1	1	1	854769-4	HOLDER, INS	74		
	1	-	-	-	-	-	2266129	PRINT, APPLICATOR LOG SHEET	72		
	-	-	1	1	1	1	2119956-1	DOCUMENTATION PACKAGE	71		
	-	-	1	1	1	1	2119791-9	DEPRESSOR, WIRE	70		
	-	-	1	-	1	1	2119740-1	TAG, IDENTIFICATION	67		
	-	-	2	2	2	2	2168078-1	SCREW, DRIVE, RH, RoHS, 2 x .188	66		
	-	-	1	1	1	1	2119793-1	LIMITER, ADJUSTMENT BOLT	63		
6	-	-	3	3	3	3	992763-5	SCR, SET, SOC, CONE POINT, M3 x 4.0	62		
	-	-	-	-	1	1	5-18022-5	SCR, HEX HD CAP, M4 X 6.0	59		
	-	-	1	1	1	1	21028-2	PIN, SLOTTED SPRING .062 X .250	58		
	-	-	-	-	1	1	1338685-1	PAWL, FEED	56		
14	-	-	2	2	2	2	2168083-8	SCR, SKT HD CAP, RoHS, M4 X 16	53		
	-	-	1	1	1	1	5018030-1	NUT, HEX, REG, RoHS, M3	52		
	-	-	1	1	1	1	811242-5	BUMPER, HOLD DOWN	51		
	-	-	1	1	1	1	690753-2	SPACER, TONKER	50		
	-	-	-	-	1	2	18023-9	SCR, SKT HD CAP M4 X 6.0	49		
	-	-	-	-	-	1	2119652-1	FEED CAM, PRE FEED	48		
	-	-	1	1	1	1	2079383-7	SCR, BHSC, RoHS (M8 X 25)	41		
	-	-	1	1	1	1	2119645-1	DISC, NUMBERED FA WIRE ADJUSTMENT	40		
	-	-	1	1	1	1	2119957-1	APPLICATOR SHIM PACK	39		
	-	-	1	1	1	1	2119644-3	RAM WASHER, PRECISION	38		
13	-	-	1	1	1	1	1752356-6	SUPPORT, TERMINAL	34		
	-	-	2	2	2	2	2079383-5	SCR, BHSC, RoHS (M4 X 20)	33		
	-	-	1	1	1	1	2161328-1	HEX HEAD, FLANGED, M5 x 8mm LONG	32		
	-	-	1	1	1	1	1-1320908-0	SPACER, STRIP GUIDE	30		
	-	-	1	1	1	1	2119959-1	ASSEMBLY, STRIP GUIDE	29		
	-	-	1	1	1	1	455888-3	SPACER, CRIMPER	28		
	-	-	1	1	1	1	1320928-6	STRIP GUIDE	24		
	-	-	1	1	1	1	2168083-2	SCR, SKT HD CAP, RoHS, M4 X 8.0	21		
	-	-	1	1	1	1	1-18028-2	WASHER, FLAT, REG M4	20		
	-	-	1	1	1	1	2119533-1	STRIPPER, SIDE FEED	19		
1	-	-	1	1	1	1	2119806-1	INSERT, SHEAR	13		
	-	-	1	1	1	1	3-22280-3	SPRING, COMPRESSION	12		
	-	-	1	1	1	1	1-356885-4	STOP, SHEAR	11		
1	-	-	1	1	1	1	2119805-1	SHEAR HOLDER, FRONT	10		
1	-	-	1	1	1	1	1803095-1	FLOATING SHEAR, FRONT	9		
1	1	1	1	1	1	1	3-1803054-6	ANVIL, COMBINATION	8		
	-	-	1	1	1	1	4-240641-6	SPACER	7		
	-	-	-	-	-	-	-	-	6		
	-	-	1	1	1	1	1-2119780-4	DEPRESSOR, SHEAR	5		
	-	-	1	1	1	1	238011-2	BLOCK, CRIMPER SPACER	4		
1	1	1	1	1	1	1	3-1803019-1	CRIMPER, INSULATION O	3		
	-	-	1	1	1	1	455888-4	SPACER, CRIMPER	2		
1	-	-	1	1	1	1	4-1633713-7	CRIMPER, WIRE PREMIUM	1		
-78 -77 -27 -25 -22 -21						PART NO		DESCRIPTION		ITEM NO	
THIS DRAWING IS A CONTROLLED DOCUMENT FOR THE ELECTRICAL ORGANIZATION IT IS SUBJECT TO CHANGE FOR THE LATEST REVISIONS, INTER-ENGINEERING COORDINATION GROUPS BE CONDUCTED FOR THE LATEST REVISIONS											
DWN B. KNEPPER CHK C. BAILEY APVD M. CLIFFORD						21-Oct-13 21-Oct-13 21-Oct-13		NAME			
DIMENSIONS:						TOLERANCES UNLESS OTHERWISE SPECIFIED:		PRODUCT SPEC			
mm						0 PLC ±.5 2 PLC ±.13 3 PLC ±.013 4 PLC ±.0001		APPLICATION SPEC		SIZE	
						FINISH		WEIGHT		SCALE	
MATERIAL						-		A		00779	
Customer Accessible Production Drawing						SCALE		1:2		SHEET 3 of 4	
Ocean Side Feed Applicator						DRAWING NO		C=2266129		RESTRICTED TO	
-						-		-		-	
-						-		-		-	
-						-		-		-	
-						-		-		-	
-						-		-		-	
-						-		-		-	
-						-		-		-	
-						-		-		-	
-						-		-		-	
-						-		-		-	
-						-		-		-	
-						-		-		-	
-						-		-		-	
-						-		-		-	
-						-		-		-	
-						-		-		-	
-						-		-		-	
-						-		-		-	
-						-		-		-	
-						-		-		-	
-						-		-		-	
-						-		-		-	
-						-		-		-	
-						-		-		-	
-						-		-		-	
-						-		-		-	
-						-		-		-	
-						-		-		-	
-						-		-		-	
-						-		-		-	
-						-		-		-	
-						-		-		-	
-						-		-		-	
-						-		-		-	
-						-		-		-	
-						-		-		-	
-						-		-		-	
-						-		-		-	
-						-		-		-	
-						-		-		-	
-						-		-		-	
-						-		-		-	
-						-		-		-	
-						-		-		-	
-						-		-		-	
-						-		-		-	
-						-		-		-	
-						-		-		-	
-						-		-		-	
-						-		-		-	
-						-		-		-	
-						-		-		-	
-						-		-		-	
-						-		-		-	
-						-		-		-	
-						-		-		-	
-						-		-		-	
-						-		-		-	
-						-		-		-	
-						-		-		-	
-						-		-		-	
-						-		-		-	
-						-		-		-	
-						-		-		-	
-						-		-		-	
-						-		-		-	
-						-		-		-	
-						-		-		-	
-						-		-		-	
-						-		-		-	
-						-		-		-	
-						-		-		-	
-						-		-		-	
-						-		-		-	
-						-		-		-	
-						-		-		-	
-						-		-		-	
-						-		-		-	
-						-		-		-	
-						-		-		-	
-						-		-		-	
-						-		-		-	
-						-		-		-	
-						-		-		-	
-						-		-		-	
-						-		-		-	
-						-		-		-	

PNEUMATIC

250

249

238

163

59

136

137

172

56

Diagram illustrating the STE servo feeder assembly. The main unit is labeled "STE". A callout indicates "SERVO FEEDER NOT INCLUDED". Callouts include 240 (a pin), 133 (a bracket), 135 (a pin), 198 (a pin), and 117 REF (a reference point). A warning symbol is also present.

30mm STROKE

142

49

MECHANICAL POST FEED

30mm STROKE

48

49

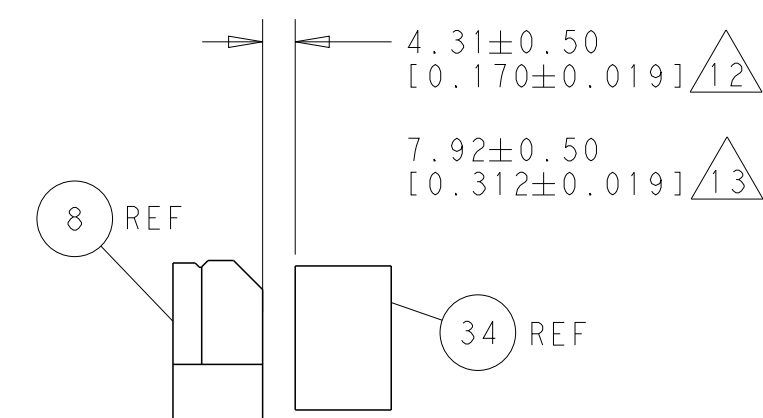
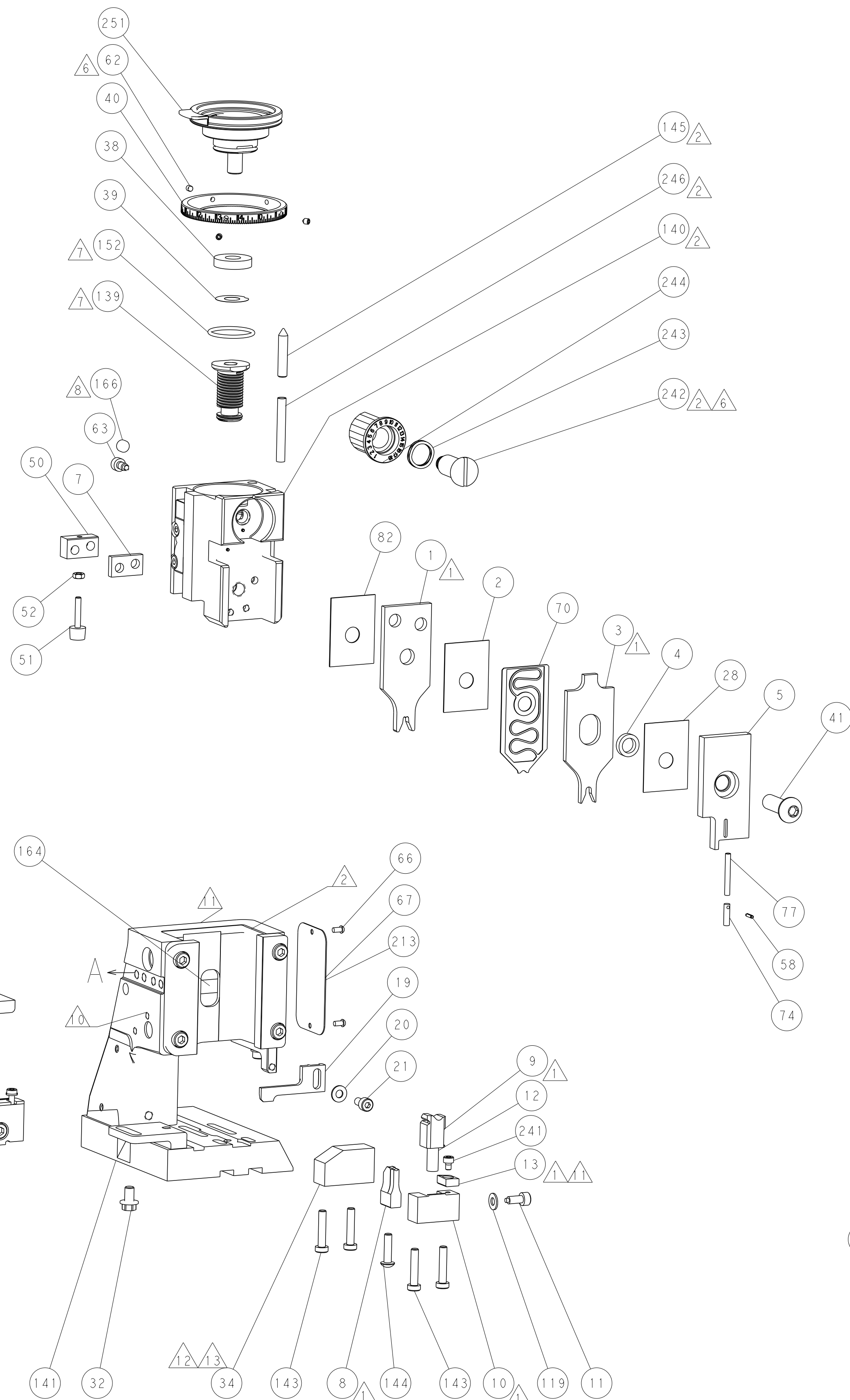
MECHANICAL PRE FEED

30mm STROKE

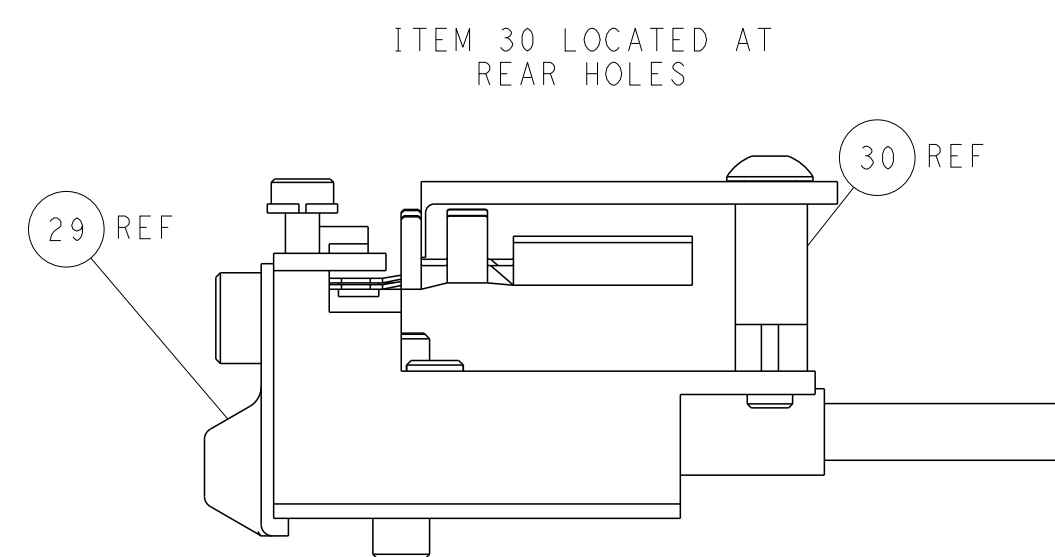
151

49

AIR FEED





TERMINAL SUPPORT LOCATION



FEED TRACK POSITION
GUIDE BY INSULATION BARREL

Shown on sheets 3 of 4 & 4 of 4
(Atlantic version shown on sheets 1 of 4 & 2 of 4)

<small>THIS DRAWING IS A CONTROLLED DOCUMENT FOR TEO ELECTRONICS CORPORATION IT IS THE PROPERTY OF TEO ELECTRONICS CORPORATION AND THE INFORMATION CONTAINED HEREIN SHOULD BE CONTROLLED FOR THE LATEST REVISION.</small>		<small>DWN</small> R. KNEPPER		<small>21-Oct-13</small>	
<small>DATE</small> 17-10-2013		<small>CHK</small> G.BAILEY		<small>21-Oct-13</small>	
<small>APVD</small> M. CLIFFORD		<small>21-Oct-13</small>		 TE Connectivity Harrisburg, PA 17105-3608	
<small>DIMENSIONS:</small> mm		<small>TOLERANCES UNLESS OTHERWISE SPECIFIED:</small> 0 PLC ±.1 1 PLC ±0.5 2 PLC ±0.13 3 PLC ±0.013 4 PLC ±0.0001 ANGLES ±.		NAME Ocen Side Feed Applicator	
		PRODUCT SPEC - APPLICATION SPEC -		SIZE A	
MATERIAL -		FINISH -		DRAWING NO 00779	
WEIGHT -		RESTRICTED TO -		SCALE 1:2	
SHEET 4		OF 4		REV A1	
Customer Accessible Production Drawing					