

8

7

6

5

4

3

2

1

THIS DRAWING IS UNPUBLISHED.

RELEASED FOR PUBLICATION

20

20

COPYRIGHT 20

BY TYCO ELECTRONICS CORPORATION. ALL RIGHTS RESERVED.

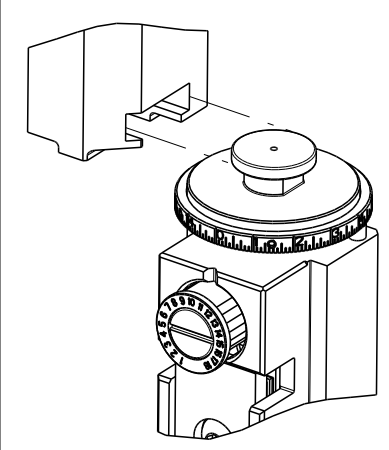
ATLANTIC VERSION  
TERMINATOR  
INTERFACE ADAPTER

PART  
NUMBER

REVISION

DESCRIPTION

FEED TYPE



2266127-1

A

FINE CRIMP HEIGHT ADJUST

MECHANICAL

2266127-2

A

FINE CRIMP HEIGHT ADJUST

PNEUMATIC

2266127-5

A

FINE CRIMP HEIGHT ADJUST

SERVO  
LATCH PLATE

2266127-6

A

NON-CRIMP HEIGHT ADJUST

SERVO  
LATCH PLATE

2266127-7

A

FINE CRIMP HEIGHT ADJUST

NONE

7-2266127-7

A

CRIMP TOOLING KIT

7-2266127-8

A

APPLICATOR CONVERSION KIT

APPLICATOR DATA

CRIMP

SIZE

TYPE

WIRE

3.28 mm [ .129 ]

F

INSUL

4.83 mm [ .190 ]

O

APPLICATOR INSTRUCTIONS

408-10389

APPLICATOR CONVERSION KITS

PART NUMBER

INSULATION DIAMETER RANGE

7-2266127-8

Ø 4.70-5.18mm [ .185-.204 ]

7-2266128-8

Ø 3.94-4.83mm [ .155-.190 ]

7-2266129-8

Ø 3.56-4.06mm [ .140-.160 ]

TERMINAL DATA: DEUTSCH TERMINAL DEUTSCH CRIMP SPECIFICATION			
TERMINAL NAME: STAMPED CONTACT PIN SIZE 12			
WIRE STRIP LENGTH 5.71-6.99 mm [ .225-.275 IN ]		INSULATION DIAMETER RANGE Ø 4.70-5.18 mm [ .185-.204 IN ]	
TERMINAL APPLICATION SPECIFICATION	0425-041-0000 Rev E	-	-
TERMINALS APPLIED			
TE TERMINAL	DEUTSCH TERMINAL	TE TERMINAL	DEUTSCH TERMINAL
286989-1	1060-12-0222	286989-2	1060-12-0244

WIRE SIZE	CRIMP HEIGHT mm [ INCH ]	CRIMP HEIGHT REFERENCE SETTING
6.00mm2	2.72+0.03/-0.05 [ .107+ .001/- .002 ]	5.4
10 AWG	2.51+0.03/-0.05 [ .099+ .001/- .002 ]	7.6
5.00mm2	2.51+0.03/-0.05 [ .099+ .001/- .002 ]	7.5
4.00mm2	2.16+0.03/-0.05 [ .085+ .001/- .002 ]	11.0

1 RECOMMENDED SPARE PARTS

2 GREASE BEARING SURFACES LIGHTLY

3. LUBRICATE DAILY PER THE APPLICATOR INSTRUCTION SHEET SUPPLIED WITH THE APPLICATOR.

4 APPLICATOR SPECIFIC DATA TO BE ENTERED INTO BLANK MEMORY CHIP AT ASSEMBLY. SEE BELOW FOR PART NUMBER:  
MECHANICAL FEED WITH "SMART APPLICATOR" CONVERSION: 8-2266127-4  
PNEUMATIC FEED WITH "SMART APPLICATOR" CONVERSION: 8-2266127-4  
SERVO FEED WITH "FINE CRIMP HEIGHT ADJUST": 8-2266127-5  
SERVO FEED WITH "NON-CRIMP HEIGHT ADJUST": 8-2266127-6

5. ADJUSTMENT OF THE STRIPPER MAY BE REQUIRED WHEN MOVING THE APPLICATOR BETWEEN BENCH AND LEADMAKER APPLICATIONS.

6 APPLY PART NUMBER 1-23419-5 LOCTITE TO THREADS OF ITEMS 62 & 242. FOR -6 ONLY APPLY PART NUMBER 1-23419-5 LOCTITE TO THREADS OF ITEMS 37 & 242.

7 GREASE THREADS, GROOVE AND O-RING ON ITEMS 35 & 252.

8 MAGNET, ITEM 166 MUST BE ORIENTED CORRECTLY IN ORDER TO PROPERLY ACTUATE THE COUNTER.

9 CRIMP HEIGHT REFERENCE SETTING WAS THE SETTING USED WHEN THE APPLICATOR WAS QUALIFIED AT THE FACTORY. ADJUSTMENT MAY BE NECESSARY WHEN RUNNING APPLICATOR IN THE FIELD.

10 SPARE FEED CAM STORAGE LOCATION REFER TO INSTRUCTION SHEET FOR ADDITIONAL INFORMATION.

11 TO CONVERT THE APPLICATOR TO A NON-CARRIER CUTTING STYLE, REMOVE ITEM 13 AND ATTACH TO THE LOCATION ON THE BACK SIDE OF THE HOUSING. REFER TO INSTRUCTION SHEET FOR ADDITIONAL INFORMATION.

12 WHEN ASSEMBLING A NON CRIMP HEIGHT ADJUST APPLICATOR (-6) USE SHIMS FROM ITEM 260 TO ACHIEVE A NOMINAL SHIM HEIGHT OF 3.08.

13 DIMENSION 1.27±0.50 [0.050±0.019] APPLIES TO PIN TERMINALS 1060-12-02XX.

14 DIMENSION 7.92±0.50 [0.312±0.019] APPLIES TO SOCKET TERMINALS 1062-12-02XX.

15 CUT TO LENGTH AT ASSEMBLY.

16 SEE APPROPRIATE APPLICATOR LOG SHEETS FOR APPLIED TERMINALS, WIRE RANGE AND MEMORY CHIP.

AMP 4805 REV 31MAR2000

TERMINAL DATA: DEUTSCH TERMINAL DEUTSCH CRIMP SPECIFICATION			
TERMINAL NAME: STAMPED CONTACT SOCKET SIZE 12			
WIRE STRIP LENGTH 5.71-6.99 mm [ .225-.275 IN ]		INSULATION DIAMETER RANGE Ø 4.70-5.18 mm [ .185-.204 IN ]	
TERMINAL APPLICATION SPECIFICATION	0425-041-0000 Rev E	-	-
TERMINALS APPLIED			
TE TERMINAL	DEUTSCH TERMINAL	TE TERMINAL	DEUTSCH TERMINAL
286988-1	1062-12-0222	286988-2	1062-12-0244

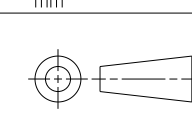
\*WARNING  
ON INSTALLATION, SET WIRE DISC, ITEM 40 TO LARGEST WIRE SIZE SETTING. USE OF SETTINGS BELOW MINIMUM REQUIRED CRIMP HEIGHT SETTING WILL CAUSE DAMAGE TO CRIMP TOOLING.

-	-	-	1	-	-	-	2119957-2	APPLICATOR SHIM PACK	260
-	-	1	-	1	1	1	8-21084-0	O-RING, .676 ID, .070 DIA. MAT.	252
-	-	-	-	-	1	-	2119640-1	PUSH ROD, AIR FEED	250
-	-	-	-	-	1	-	2079988-1	BUSHING, LCH5-12, MISUMI	249
-	-	-	-	-	1	-	2119641-1	FEED CAM, AIR FEED	248
-	-	1	-	1	1	1	2119798-1	DETENT PIN	247
-	-	1	-	1	1	1	1-22279-3	SPRING, COMPRESSION	246
-78	-77	-7	-6	-5	-2	-1	PART NO	DESCRIPTION	ITEM NO

ATLANTIC VERSION  
Shown on sheets 1 of 4 & 2 of 4  
(Pacific version shown on sheets 3 of 4 & 4 of 4)

SET UP GAUGE 2119599-1	LOC A	DIST 66	REVISIONS			
P	LTR	DESCRIPTION		DATE	OWN	APVD
	A1	ECR-14-008355		04JUN2014	RK	GB

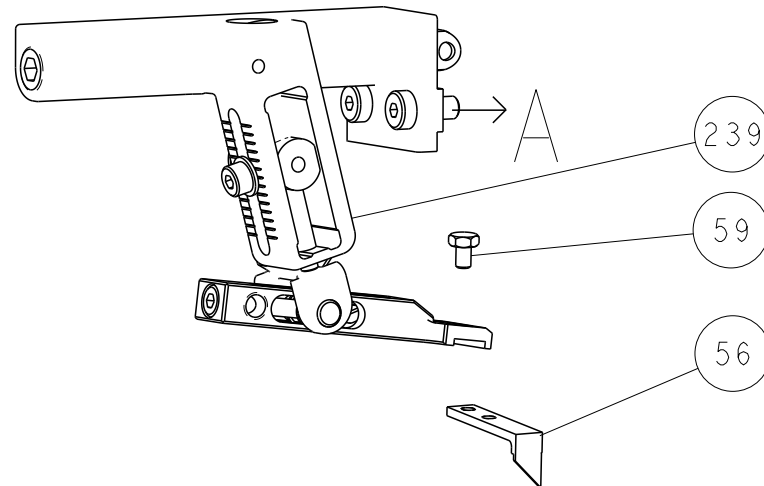
-	-	-	1	-	-	-	2119758-1	RAM, AMP STYLE, SIDE FEED, NON-ADJ.	245
-	-	1	1	1	1	1	2119082-9	CAM, SNAIL, INSULATION ADJUSTMENT	244
-	-	1	1	1	1	1	2079764-1	WASHER, WAVE SPRING, CREST-TO-CREST	243
-	-	1	1	1	1	1	2119083-1	RETAINER, INSULATION DIAL	242
-	-	1	1	1	1	1	7-18023-7	SCR, SKT HD CAP M3 X 4.0	241
-	-	-	2	-	-	-	2168400-6	SHCS, LOW HEAD, RoHS, M5 X 16	240
-	-	-	-	-	-	1	2119580-1	MECHANICAL FEED ASSEMBLY	239
-	-	-	-	-	1	-	2063440-1	AIR FEED MODULE	238
-	-	-	1	1	-	-	2119740-2	TAG, IDENTIFICATION	213
-	-	-	1	1	-	-	1901094-3	SPACER, FEEDER	198
-	-	-	-	-	2	-	21045-3	RING, RETAIN, EXTERN, 3/16 CRESCENT	172
-	-	1	1	1	1	1	994969-1	MAGNET, RARE EARTH HIGH ENERGY	166
-	-	REF	REF	REF	REF	REF	994970-2	COUNTER, MAGNETIC	164
-	-	-	-	-	1	-	240638-1	SPRING, FEED FINGER	163
-	-	-	-	-	1	-	3-23627-7	PIN, RETAIN, GRVD, 3/16 X .854	137
-	-	-	-	-	1	-	2119799-1	HOLDER, FEED FINGER, AF	136
-	-	-	REF	REF	-	-	SEE NOTE 4	MEMORY CHIP, PROGRAMMED	135
-	-	-	1	1	-	-	1633743-1	SERVO FEED LATCH ASM	133
-	-	1	1	1	1	1	1-18028-2	WASHER, FLAT, REG M4	119
-	-	-	REF	REF	-	-	2119944-1	FEED FINGER ASSEMBLY, SF	117
-	-	1	1	1	1	1	455888-5	SPACER, CRIMPER	82
-	-	1	1	1	1	1	5-547505-2	SPRING, COMPRESSION	77
-	-	1	1	1	1	1	854769-4	HOLDER, INS	74
1	-	-	-	-	-	-	2266127	PRINT, APPLICATOR LOG SHEET	72
-	-	1	1	1	1	1	2119956-1	DOCUMENTATION PACKAGE	71
-	-	1	1	1	1	1	2119791-9	DEPRESSOR, WIRE	70
-	-	1	-	-	1	1	2119740-1	TAG, IDENTIFICATION	67
-	-	2	2	2	2	2	2168078-1	SCREW, DRIVE, RH, RoHS, 2 x .188	66
-	-	1	-	1	1	1	2119793-1	LIMITER, ADJUSTMENT BOLT	63
-	-	3	-	3	3	3	992763-5	SCR, SET, SOC, CONE POINT, M3 x 4.0	62
-	-	1	1	1	1	1	2079383-4	SCR, BHSC, RoHS (M4 X 8)	60
-	-	-	-	-	1	1	5-18022-5	SCR, HEX HD CAP, M4 X 6.0	59
-	-	1	1	1	1	1	21028-2	PIN, SLOTTED SPRING .062 X .250	58
-	-	-	-	-	1	1	1338685-1	PAWL, FEED	56
-	-	4	4	4	4	4	2168400-1	SHCS, LOW HEAD, RoHS, M4 X 12	54
-	-	2	2	2	2	2	2168083-8	SCR, SKT HD CAP, RoHS, M4 X 16	53
-	-	1	1	1	1	1	5018030-1	NUT, HEX, REG, RoHS, M3	52
-	-	1	1	1	1	1	811242-5	BUMPER, HOLD DOWN	51
-	-	1	1	1	1	1	690753-2	SPACER, TONKER	50
-	-	-	-	-	1	2	18023-9	SCR, SKT HD CAP M4 X 6.0	49
-	-	-	-	-	-	1	2119652-1	FEED CAM, PRE FEED	48
-	-	-	-	-	-	1	2119653-1	FEED CAM, POST FEED	47
-	-	1	1	1	1	1	2119656-9	APPLICATOR BASIC ASSEMBLY, SF	46
-	-	1	-	1	1	1	2119370-1	RAM, AMP STYLE, SIDE FEED	44
-	-	1	1	1	1	1	2079383-7	SCR, BHSC, RoHS (M8 X 25)	41
-	-	1	-	1	1	1	2119645-1	DISC, NUMBERED FA WIRE ADJUSTMENT	40
-	-	1	-	1	1	1	2119957-1	APPLICATOR SHIM PACK	39
-	-	1	1	1	1	1	2119644-3	RAM WASHER, PRECISION	38
-	-	1	1	1	1	1	2119085-1	FA HEAD, ATLANTIC STYLE	37
-	-	1	-	1	1	1	2119092-1	BOLT, ADJUSTMENT	35
-	-	1	1	1	1	1	1752356-6	SUPPORT, TERMINAL	34
-	-	2	2	2	2	2	2079383-5	SCR, BHSC, RoHS (M4 X 20)	33
-	-	1	1	1	1	1	2161328-1	HEX HEAD, FLANGED, M5 x 8mm LONG	32
-	-	1	1	1	1	1	1-1320908-0	SPACER, STRIP GUIDE	30
-	-	1	1	1	1	1	2119959-1	ASSEMBLY, STRIP GUIDE	29
-	-	1	1	1	1	1	455888-3	SPACER, CRIMPER	28
-	-	1	1	1	1	1	1320928-6	STRIP GUIDE	24
-	-	1	1	1	1	1	2168083-2	SCR, SKT HD CAP, RoHS, M4 X 8.0	21
-	-	1	1	1	1	1	1-18028-2	WASHER, FLAT, REG M4	20
-	-	1	1	1	1	1	2119533-1	STRIPPER, SIDE FEED	19
-	-	1	1	1	1	1	2119806-1	INSERT, SHEAR	13
-	-	1	1	1	1	1	3-22280-3	SPRING, COMPRESSION	12
-	-	1	1	1	1	1	1-356885-4	STOP, SHEAR	11
-	-	1	1	1	1	1	2119805-1	SHEAR HOLDER, FRONT	10
-	-	1	1	1	1	1	1803095-1	FLOATING SHEAR, FRONT	9
1	1	1	1	1	1	1	3-1803054-4	ANVIL, COMBINATION	8
-	-	1	1	1	1	1	4-240641-6	SPACER	7
-	-	-	-	-	-	-	-	-	6
-	-	1	1	1	1	1	1-2119780-4	DEPRESSOR, SHEAR	5
-	-	1	1	1	1	1	238011-2	BLOCK, CRIMPER SPACER	4
1	1	1	1	1	1	1	2-1803019-9	CRIMPER, INSULATION O	3
-	-	1	1	1	1	1	455888-4	SPACER, CRIMPER	2
-	1	1	1	1	1	1	4-1633713-7	CRIMPER, WIRE PREMIUM	1
-78	-77	-7	-6	-5	-2	-1	PART NO	DESCRIPTION	ITEM NO

THIS IS SUBJECT TO CHANGE WITHOUT NOTICE. THE USER SHALL BE RESPONSIBLE FOR VERIFYING THE LATEST REVISIONS OF THIS DRAWING. FOR THE LATEST REVISIONS, SEE THE REVISIONS SECTION OF THIS DRAWING.				OWN R. KNEPPER CHK G. BAILEY APVD M. CLIFFORD	22-Jan-14 22-Jan-14 22-Jan-14	TE Connectivity Harrisburg, PA 17105-3608					
DIMENSIONS:		TOLERANCES UNLESS OTHERWISE SPECIFIED:		NAME		Ocean Side Feed Applicator					
mm		0 PLC ±.5 1 PLC ±0.5 2 PLC ±0.13 3 PLC ±0.013 4 PLC ±0.0001 ANGLES ±.5		PRODUCT SPEC		-					
		APPLICATION SPEC		SIZE		CAGE CODE		DRAWING NO			
MATERIAL		FINISH		WEIGHT		A1 00779		©=2266127			
Customer Accessible Production Drawing				SCALE		1:2		SHEET 1 OF 4			
								REV A1			

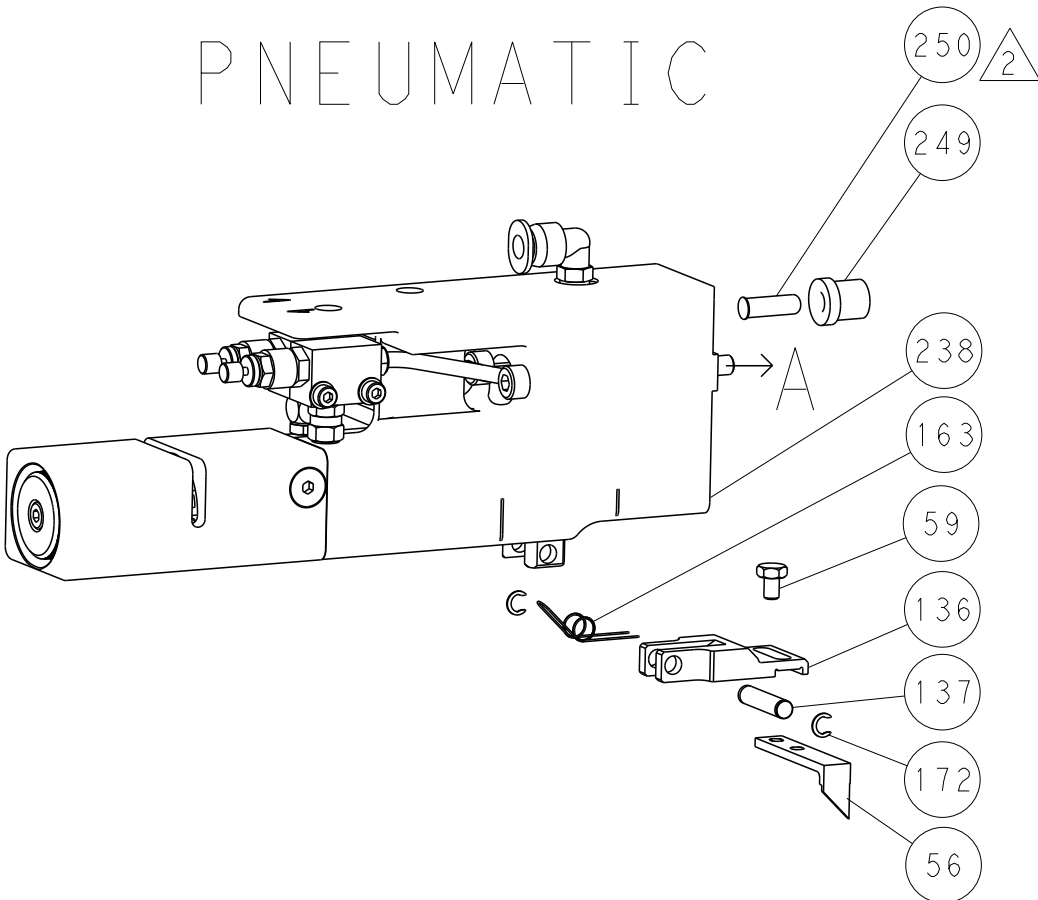
SHEETS 3 & 4 ARE NOT REQUIRED FOR ATLANTIC VERSION

LOC	DIST	REVISIONS					
		P	LTR	DESCRIPTION	DATE	DWN	APVD
A	66	-	-	SEE SHEET 1	-	-	-

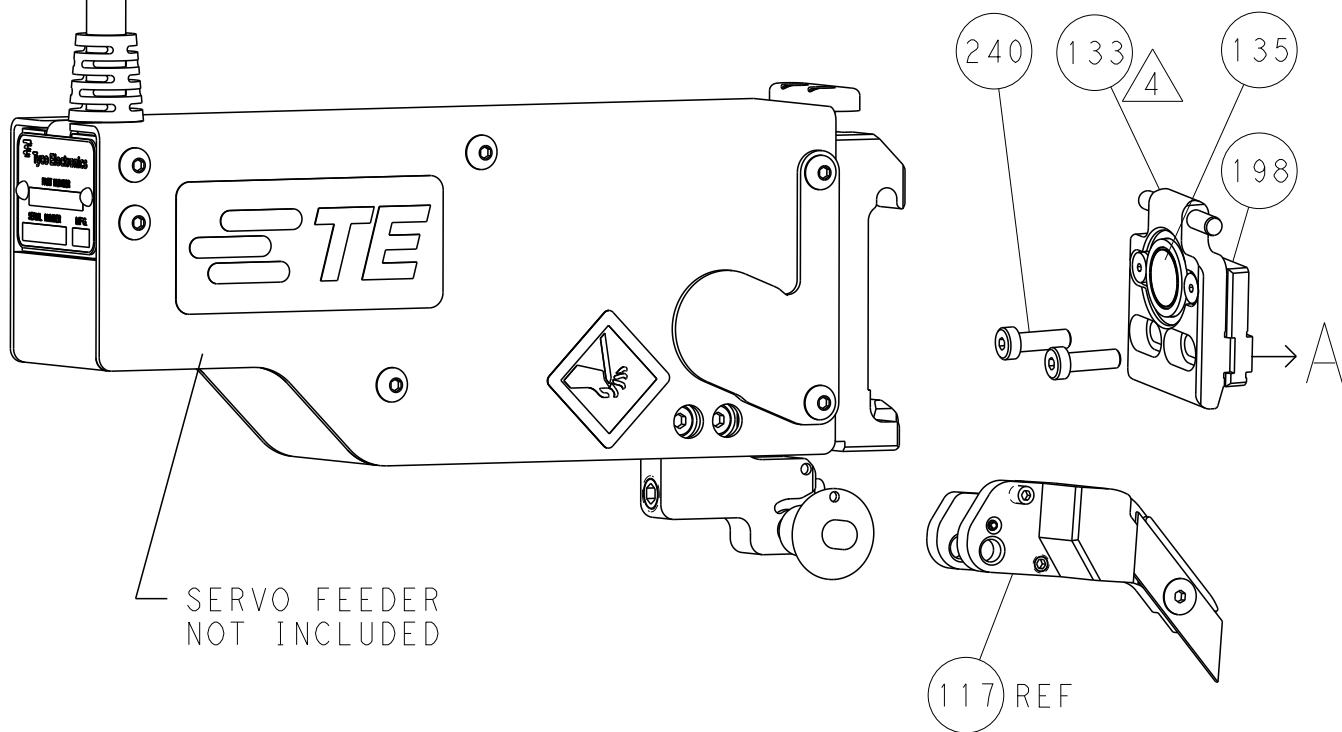
FEED TYPE  
MECHANICAL



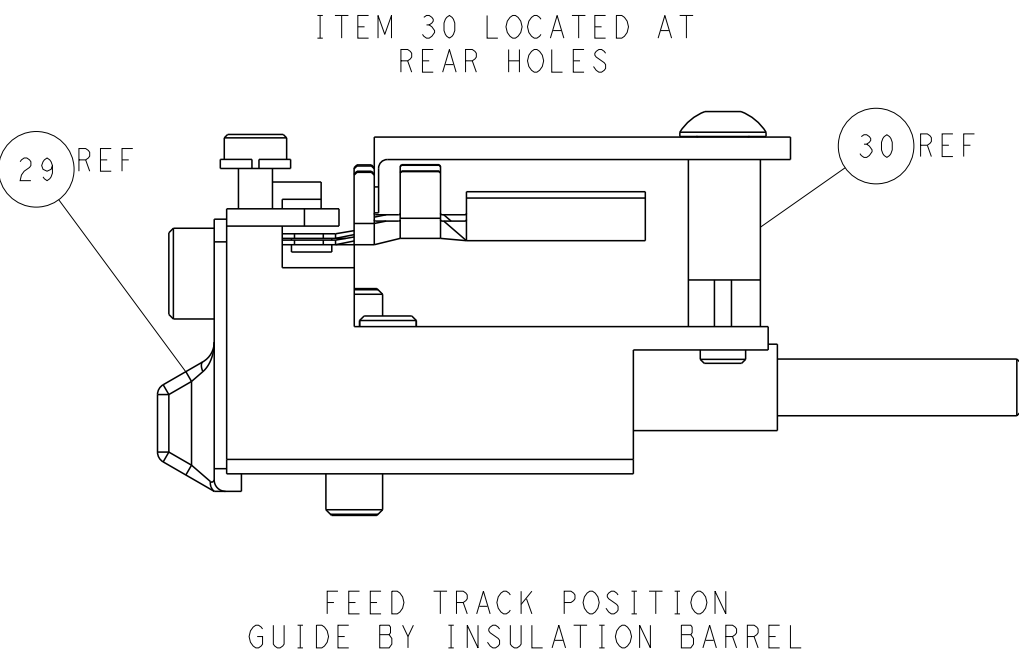
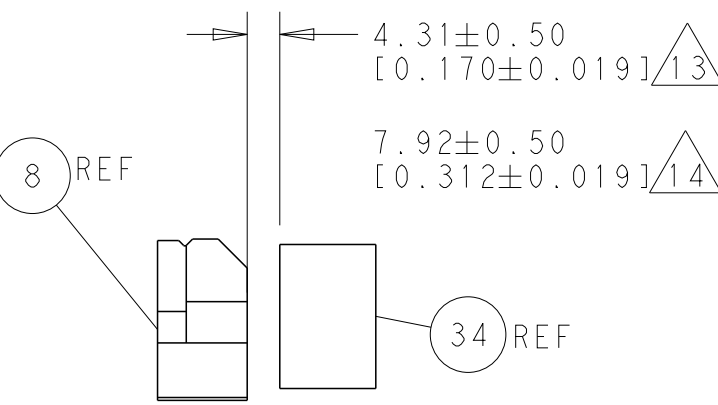
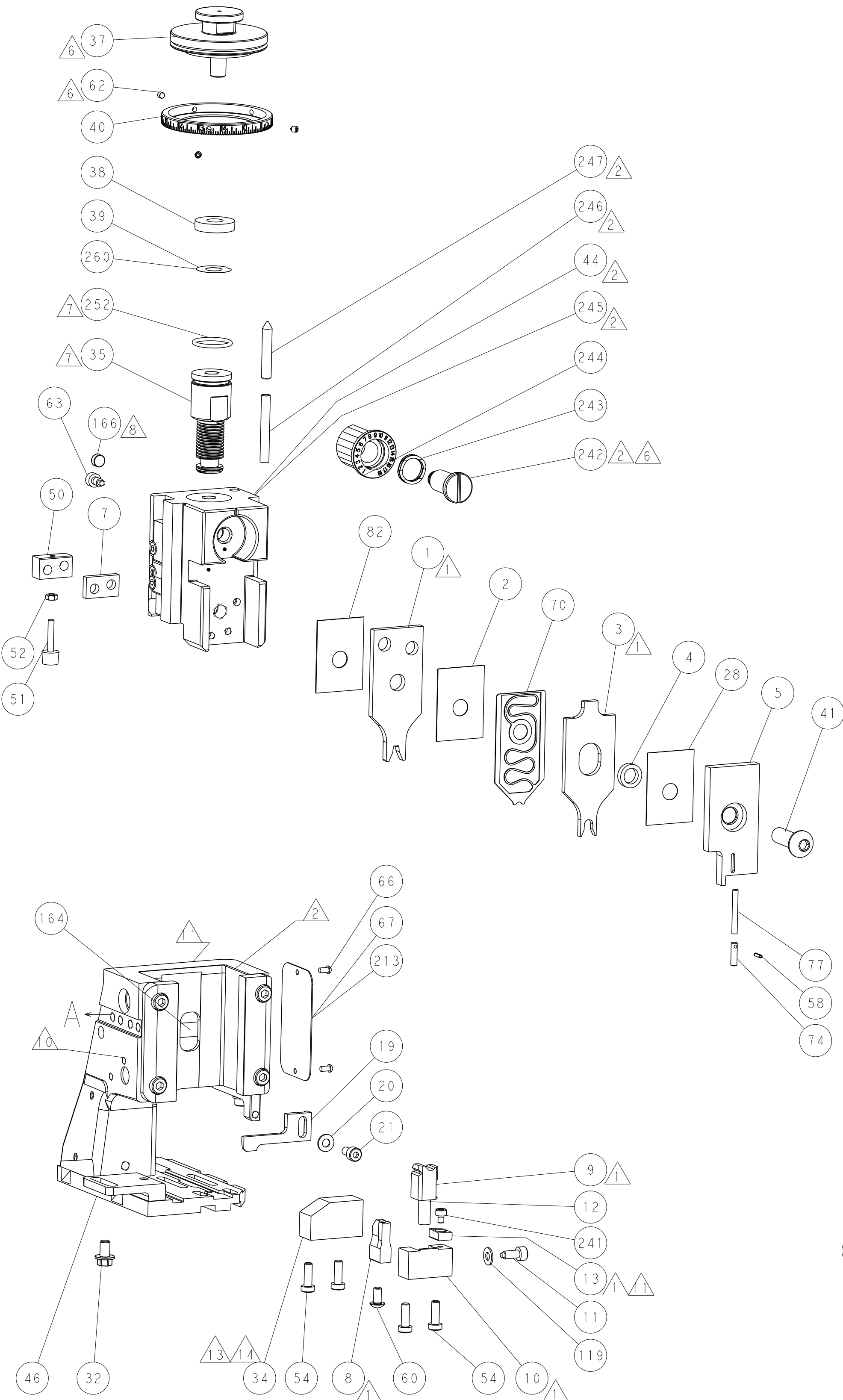
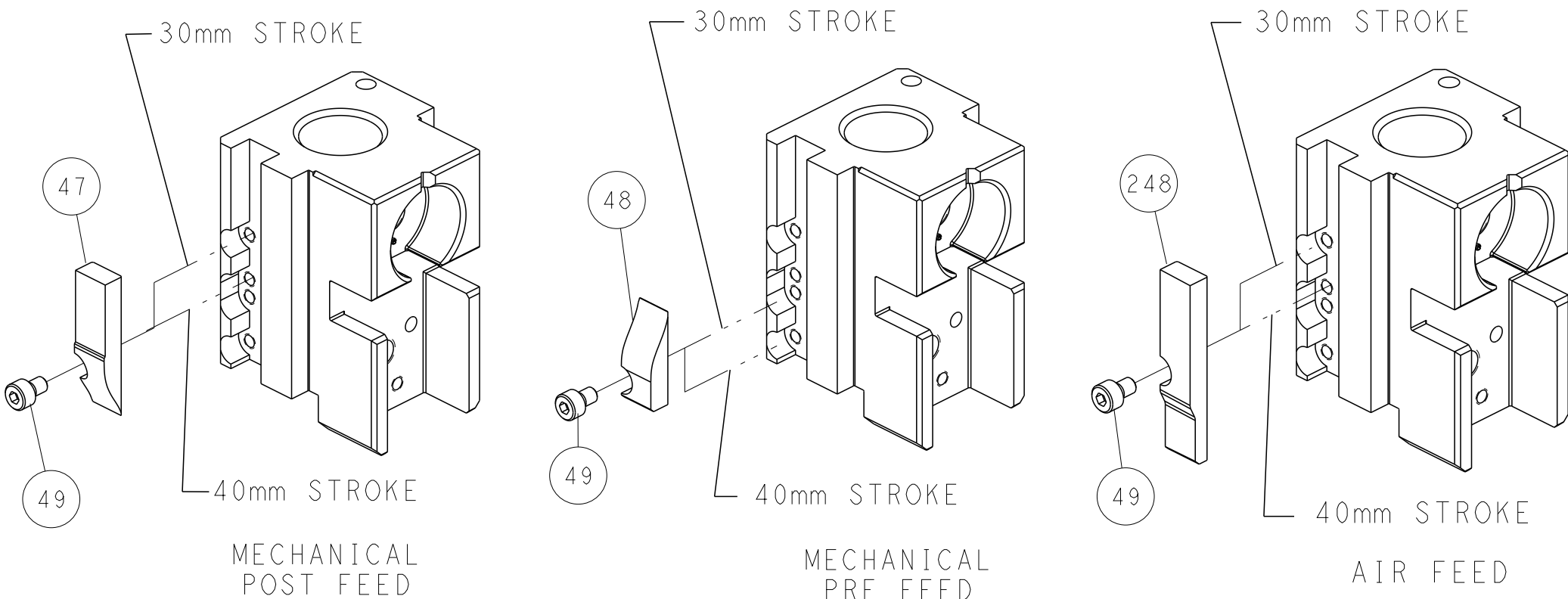
PNEUMATIC



SERVO  
LATCH PLATE

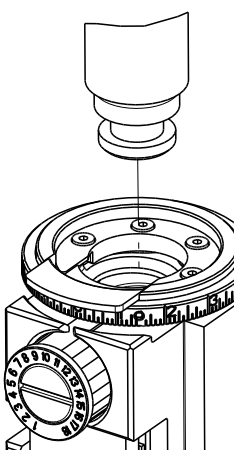


CAM POSITIONS



ATLANTIC VERSION  
Shown on sheets 1 of 4 & 2 of 4  
(Pacific version shown on sheets 3 of 4 & 4 of 4)

THIS DRAWING IS UNPUBLISHED. IT IS SUBJECT TO CHANGE WITHOUT NOTICE. IT IS THE RESPONSIBILITY OF THE USER TO VERIFY THE LATEST VERSION OF THE DRAWING.		DWN R. KNEPPER 22-Jan-14	TE Connectivity Harrisburg, PA 17105-3608	
DIMENSIONS: mm		CHK G. BAILEY 22-Jan-14	NAME Ocean Side Feed Applicator	
TOLERANCES UNLESS OTHERWISE SPECIFIED: 0 PLC ±.5 1 PLC ±.5 2 PLC ±.13 3 PLC ±.013 4 PLC ±.0001 ANGLES FINISH		APVD M. CLIFFORD 22-Jan-14	PRODUCT SPEC APPLICATION SPEC	
MATERIAL		SIZE A1	CAGE CODE 00779	DRAWING NO C=2266127
Customer Accessible Production Drawing		SCALE 1:2	SHEET 2	REV A1

	PART NUMBER	REVISION	DESCRIPTION	FEED TYPE	APPLICATOR STYLE CONVERSION CHART						
					CONVERT TO	PART NUMBERS REQUIRED					
	2-2266127-1	A	FINE CRIMP HEIGHT ADJUST	MECHANICAL	PNEUMATIC FEED	2119950-1	1338685-1	5-18022-5	2119641-2	2119799-1	2063440-1
					SERVO LATCH PLATE	2119951-1	-	8-2266127-5	1901094-3	-	2168400-6 (QUANTITY 2)
					SMART APPLICATOR	2161326-1	-	8-2266127-4	-	-	-
	2-2266127-2	A	FINE CRIMP HEIGHT ADJUST	PNEUMATIC	MECHANICAL FEED	2119949-1	1338685-1	5-18022-5	2119653-2	-	-
					SERVO LATCH PLATE	2119951-1	-	8-2266127-5	1901094-3	-	2168400-6 (QUANTITY 2)
					SMART APPLICATOR	2161326-1	-	8-2266127-4	-	-	-
	2-2266127-5	A	FINE CRIMP HEIGHT ADJUST	SERVO LATCH PLATE <sup>4</sup>	MECHANICAL FEED	2119949-1	1338685-1	5-18022-5	2119653-2	-	-
					PNEUMATIC FEED	2119950-1	1338685-1	5-18022-5	2119641-2	2119799-1	2063440-1
	2-2266127-7	A	FINE CRIMP HEIGHT ADJUST	NONE	-	-	-	-	-	-	-
	7-2266127-7	A	CRIMP TOOLING KIT	-	-	-	-	-	-	-	-
	7-2266127-8	A	APPLICATOR CONVERSION KIT	-	<sup>4</sup>	-	-	-	-	-	-

APPLICATOR DATA		
CRIMP	SIZE	TYPE
WIRE	3.28 mm [.129]	F
INSUL	4.83 mm [.190]	O
APPLICATOR INSTRUCTIONS 408-10389		

<sup>15</sup> APPLICATOR CONVERSION KITS	
PART NUMBER	INSULATION DIAMETER RANGE
7-2266127-8	Ø4.70-5.18mm [.185-.204]
7-2266128-8	Ø3.94-4.83mm [.155-.190]
7-2266129-8	Ø3.56-4.06mm [.140-.160]

TERMINAL DATA: DEUTSCH TERMINAL DEUTSCH CRIMP SPECIFICATION			
TERMINAL NAME: STAMPED CONTACT PIN SIZE 12			
WIRE STRIP LENGTH  5.71-6.99 mm [.225-.275 IN]		INSULATION DIAMETER RANGE Ø4.70-5.18 mm [.185-.204 IN]	
TERMINAL APPLICATION SPECIFICATION	0425-041-0000 Rev E	-	-
TERMINALS APPLIED <sup>12</sup>			
TE TERMINAL	DEUTSCH TERMINAL	TE TERMINAL	DEUTSCH TERMINAL
286989-1	1060-12-0222	286989-2	1060-12-0244

TERMINAL DATA: DEUTSCH TERMINAL DEUTSCH CRIMP SPECIFICATION			
TERMINAL NAME: STAMPED CONTACT SOCKET SIZE 12			
WIRE STRIP LENGTH  5.71-6.99 mm [.225-.275 IN]		INSULATION DIAMETER RANGE Ø4.70-5.18 mm [.185-.204 IN]	
TERMINAL APPLICATION SPECIFICATION	0425-041-0000 Rev E	-	-
TERMINALS APPLIED <sup>13</sup>			
TE TERMINAL	DEUTSCH TERMINAL	TE TERMINAL	DEUTSCH TERMINAL
286988-1	1062-12-0222	286988-2	1062-12-0244

WIRE SIZE		CRIMP HEIGHT mm [INCH]		CRIMP HEIGHT REFERENCE SETTING <sup>9</sup>
6.00mm2		2.72±0.03/-0.05 [.107+/.001/- .002]		5.4
10 AWG		2.51±0.03/-0.05 [.099+/.001/- .002]		7.6
5.00mm2		2.51±0.03/-0.05 [.099+/.001/- .002]		7.5
4.00mm2		2.16±0.03/-0.05 [.085+/.001/- .002]		11.0



- <sup>1</sup> RECOMMENDED SPARE PARTS
- <sup>2</sup> GREASE BEARING SURFACES LIGHTLY
3. LUBRICATE DAILY PER THE APPLICATOR INSTRUCTION SHEET SUPPLIED WITH THE APPLICATOR.
- <sup>4</sup> APPLICATOR SPECIFIC DATA TO BE ENTERED INTO BLANK MEMORY CHIP AT ASSEMBLY. SEE BELOW FOR PART NUMBER:  
MECHANICAL FEED WITH "SMART APPLICATOR" CONVERSION: 8-2266127-4  
PNEUMATIC FEED WITH "SMART APPLICATOR" CONVERSION: 8-2266127-4  
SERVO FEED WITH "FINE CRIMP HEIGHT ADJUST": 8-2266127-5
5. ADJUSTMENT OF THE STRIPPER MAY BE REQUIRED WHEN MOVING THE APPLICATOR BETWEEN BENCH AND LEADMAKER APPLICATIONS.
- <sup>6</sup> APPLY PART NUMBER 1-23419-5 LOCTITE TO THREADS OF ITEMS 62 & 242.
- <sup>7</sup> GREASE THREADS, GROOVE AND O-RING ON ITEMS 139 & 152.
- <sup>8</sup> MAGNET MUST BE ORIENTED CORRECTLY IN ORDER TO PROPERLY ACTUATE THE COUNTER.
- <sup>9</sup> CRIMP HEIGHT REFERENCE SETTING WAS THE SETTING USED WHEN THE APPLICATOR WAS QUALIFIED AT THE FACTORY. ADJUSTMENT MAY BE NECESSARY WHEN RUNNING APPLICATOR IN THE FIELD.
- <sup>10</sup> SPARE FEED CAM STORAGE LOCATION REFER TO INSTRUCTION SHEET FOR ADDITIONAL INFORMATION.
- <sup>11</sup> TO CONVERT THE APPLICATOR TO A NON-CARRIER CUTTING STYLE, REMOVE ITEM 13 AND ATTACH TO THE LOCATION ON BACK SIDE OF THE HOUSING. REFER TO INSTRUCTION SHEET FOR ADDITIONAL INFORMATION.
- <sup>12</sup> DIMENSION 1.27±0.50 [0.050±0.019] APPLIES TO PIN TERMINALS 1060-12-02XX.
- <sup>13</sup> DIMENSION 7.92±0.50 [0.312±0.019] APPLIES TO SOCKET TERMINALS 1062-12-02XX.
- <sup>14</sup> CUT TO LENGTH AT ASSEMBLY.
- <sup>15</sup> SEE APPROPRIATE APPLICATOR LOG SHEETS FOR APPLIED TERMINALS, WIRE RANGE AND MEMORY CHIP.

\*WARNING  
ON INSTALLATION, SET WIRE DISC, ITEM 40 TO LARGEST WIRE SIZE SETTING. USE OF SETTINGS BELOW MINIMUM REQUIRED CRIMP HEIGHT SETTING WILL CAUSE DAMAGE TO CRIMP TOOLING.

-	-	1	1	1	1	2119782-1	FINE ADJUST HEAD ASM, PACIFIC STYLE	251
-	-	-	-	1	-	2119640-1	PUSH ROD, AIR FEED	250
-	-	-	-	1	-	2079988-1	BUSHING, LCH5-12, MISUMI	249
-	-	1	1	1	1	1-22279-3	SPRING, COMPRESSION	246
-	-	1	1	1	1	2119082-9	CAM, SNAIL, INSULATION ADJUSTMENT	244
-78	-77	-27	-25	-22	-21	PART NO	DESCRIPTION	ITEM NO

PACIFIC VERSION  
Shown on sheets 3 of 4 & 4 of 4  
(Atlantic version shown on sheets 1 of 4 & 2 of 4)

SET UP GAUGE 2119599-1	LOC A	DIS 66	REVISIONS					
			P	LTR	DESCRIPTION	DATE	OWN	APVD
				-	SEE SHEET 1	-	-	-

<sup>6</sup>	-	-	1	1	1	1	2079764-1	WASHER, WAVE SPRING, CREST-TO-CREST	243
	-	-	1	1	1	1	2119083-1	RETAINER, INSULATION DIAL	242
	-	-	1	1	1	1	7-18023-7	SCR, SKT HD CAP M3 X 4.0	241
	-	-	-	2	-	-	2168400-6	SHCS, LOW HEAD, RoHS, M5 X 16	240
	-	-	-	-	-	1	2119580-1	MECHANICAL FEED ASSEMBLY	239
	-	-	-	-	1	-	2063440-1	AIR FEED MODULE	238
	-	-	-	1	-	-	2119740-2	TAG,IDENTIFICATION	213
	-	-	-	1	-	-	1901094-3	SPACER, FEEDER	198
	-	-	-	-	2	-	21045-3	RING, RETAIN, EXTERN, 3/16 CRESCENT	172
	-	-	1	1	1	1	994969-1	MAGNET, RARE EARTH HIGH ENERGY	166
	-	-	REF	REF	REF	REF	994970-2	COUNTER, MAGNETIC	164
	-	-	-	-	1	-	240638-1	SPRING, FEED FINGER	163
	-	-	1	1	1	1	8-21084-1	O-RING, .801 ID, .070 DIA. MAT.	152
	-	-	-	-	1	-	2119641-2	FEED CAM, AIR FEED	151
	-	-	1	1	1	1	2119798-2	DETENT PIN	145
	-	-	1	1	1	1	2079383-8	SCR, BHSC, RoHS (M4 X 16)	144
	-	-	4	4	4	4	2168400-5	SHCS, LOW HEAD, RoHS, M4 X 20	143
	-	-	-	-	-	1	2119653-2	FEED CAM, POST FEED	142
	-	-	1	1	1	1	1-2119656-0	APPLICATOR BASIC ASSEMBLY, SF	141
	-	-	1	1	1	1	2119650-1	RAM, ASIAN STYLE, SIDE FEED	140
	-	-	1	1	1	1	2119092-2	BOLT, ADJUSTMENT	139
	-	-	-	-	1	-	3-23627-7	PIN, RETAIN, GRVD, 3/16 X .854	137
	-	-	-	-	-	1	2119799-1	HOLDER,FEED FINGER, AF	136
	-	-	-	REF	-	-	SEE NOTE 4	MEMORY CHIP, PROGRAMMED	135
	-	-	-	1	-	-	1633743-1	SERVO FEED LATCH ASM	133
	-	-	1	1	1	1	1-18028-2	WASHER, FLAT, REG M4	119
	-	-	-	REF	-	-	2119944-1	FEED FINGER ASSEMBLY,SF	117
	-	-	1	1	1	1	455888-5	SPACER, CRIMPER	82
	-	-	1	1	1	1	5-547505-2	SPRING, COMPRESSION	77
	-	-	1	1	1	1	854769-4	HOLDER, INS	74
1	-	-	-	-	-	-	2266127	PRINT, APPLICATOR LOG SHEET	72
	-	-	1	1	1	1	2119956-1	DOCUMENTATION PACKAGE	71
	-	-	1	1	1	1	2119791-9	DEPRESSOR, WIRE	70
	-	-	1	-	1	1	2119740-1	TAG,IDENTIFICATION	67
	-	-	2	2	2	2	2168078-1	SCREW, DRIVE, RH, RoHS, 2 x .188	66
	-	-	1	1	1	1	2119793-1	LIMITER, ADJUSTMENT BOLT	63
<sup>6</sup>	-	-	3	3	3	3	992763-5	SCR, SET, SOC, CONE POINT, M3 x 4.0	62
	-	-	-	-	1	1	5-18022-5	SCR, HEX HD CAP, M4 X 6.0	59
	-	-	1	1	1	1	21028-2	PIN, SLOTTED SPRING .062 X .250	58
<sup>4</sup>	-	-	-	-	1	1	1338685-1	PAWL, FEED	56
	-	-	2	2	2	2	2168083-8	SCR, SKT HD CAP, RoHS, M4 X 16	53
	-	-	1	1	1	1	5018030-1	NUT, HEX, REG, RoHS, M3	52
	-	-	1	1	1	1	811242-5	BUMPER, HOLD DOWN	51
	-	-	1	1	1	1	690753-2	SPACER, TONKER	50
	-	-	-	-	1	2	18023-9	SCR, SKT HD CAP M4 X 6.0	49
	-	-	-	-	-	1	2119652-1	FEED CAM, PRE FEED	48
	-	-	1	1	1	1	2079383-7	SCR, BHSC, RoHS (M8 X 25)	41
	-	-	1	1	1	1	2119645-1	DISC, NUMBERED FA WIRE ADJUSTMENT	40
	-	-	1	1	1	1	2119957-1	APPLICATOR SHIM PACK	39
	-	-	1	1	1	1	2119644-3	RAM WASHER, PRECISION	38
	-	-	1	1	1	1	1752356-6	SUPPORT, TERMINAL	34
<sup>12</sup> <sup>13</sup>	-	-	2	2	2	2	2079383-5	SCR, BHSC, RoHS (M4 X 20)	33
	-	-	1	1	1	1	2161328-1	HEX HEAD, FLANGED, M5 x 8mm LONG	32
	-	-	1	1	1	1	1-1320908-0	SPACER, STRIP GUIDE	30
	-	-	1	1	1	1	2119959-1	ASSEMBLY, STRIP GUIDE	29
	-	-	1	1	1	1	455888-3	SPACER, CRIMPER	28
	-	-	1	1	1	1	1320928-6	STRIP GUIDE	24
	-	-	1	1	1	1	2168083-2	SCR, SKT HD CAP, RoHS, M4 X 8.0	21
	-	-	1	1	1	1	1-18028-2	WASHER, FLAT, REG M4	20
	-	-	1	1	1	1	2119533-1	STRIPPER, SIDE FEED	19
<sup>1</sup>	-	-	1	1	1	1	2119806-1	INSERT, SHEAR	13
	-	-	1	1	1	1	3-22280-3	SPRING, COMPRESSION	12
	-	-	1	1	1	1	1-356885-4	STOP, SHEAR	11
<sup>1</sup> <sup>1</sup>	-	-	1	1	1	1	2119805-1	SHEAR HOLDER, FRONT	10
	-	-	1	1	1	1	1803095-1	FLOATING SHEAR, FRONT	9
	1	1	1	1	1	1	3-1803054-4	ANVIL, COMBINATION	8
<sup>1</sup>	-	-	1	1	1	1	4-240641-6	SPACER	7
	-	-	-	-	-	-	-	-	6
	-	-	1	1	1	1	1-2119780-4	DEPRESSOR, SHEAR	5
<sup>1</sup>	-	-	1	1	1	1	238011-2	BLOCK, CRIMPER SPACER	4
	1	1	1	1	1	1	2-1803019-9	CRIMPER, INSULATION O	3
	-	-	1	1	1	1	455888-4	SPACER, CRIMPER	2
<sup>1</sup>	-	1	1	1	1	1	4-1633713-7	CRIMPER, WIRE PREMIUM	1
	-78	-77	-27	-25	-22	-21	PART NO	DESCRIPTION	ITEM NO

THIS IS SUBJECT TO CHANGE WITHOUT NOTICE. THE USER SHALL BE RESPONSIBLE FOR VERIFYING THE LATEST REVISIONS OF THIS DRAWING. FOR THE LATEST REVISIONS, CONTACT THE ORGANIZATION TO WHICH THIS DRAWING IS REFERRED.				OWN R.KNEPPER 22-Jan-14	TE Connectivity Harrisburg, PA 17105-3608							
DIMENSIONS: mm				CHK G.BAILEY 22-Jan-14								
				APVD M.CLIFFORD 22-Jan-14	NAME Ocean Side Feed Applicator							
				PRODUCT SPEC								
				APPLICATION SPEC								
MATERIAL -				WEIGHT -								
				FINISH -								
				SIZE A1	CASE CODE 00079	DRAWING NO C=2266127	RESTRICTED TO -					
Customer Accessible Production Drawing									SCALE 1:2	SHEET 3	OF 4	REV A1

LOC		DIST	REVISIONS					
A		66	P	LTR	DESCRIPTION	DATE	DWN	APVD
			-		SEE SHEET 1	-	-	-

D

C

B

A

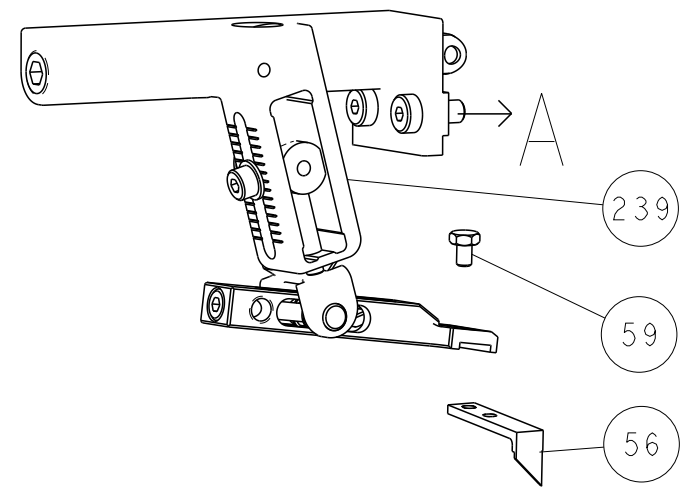
D

C

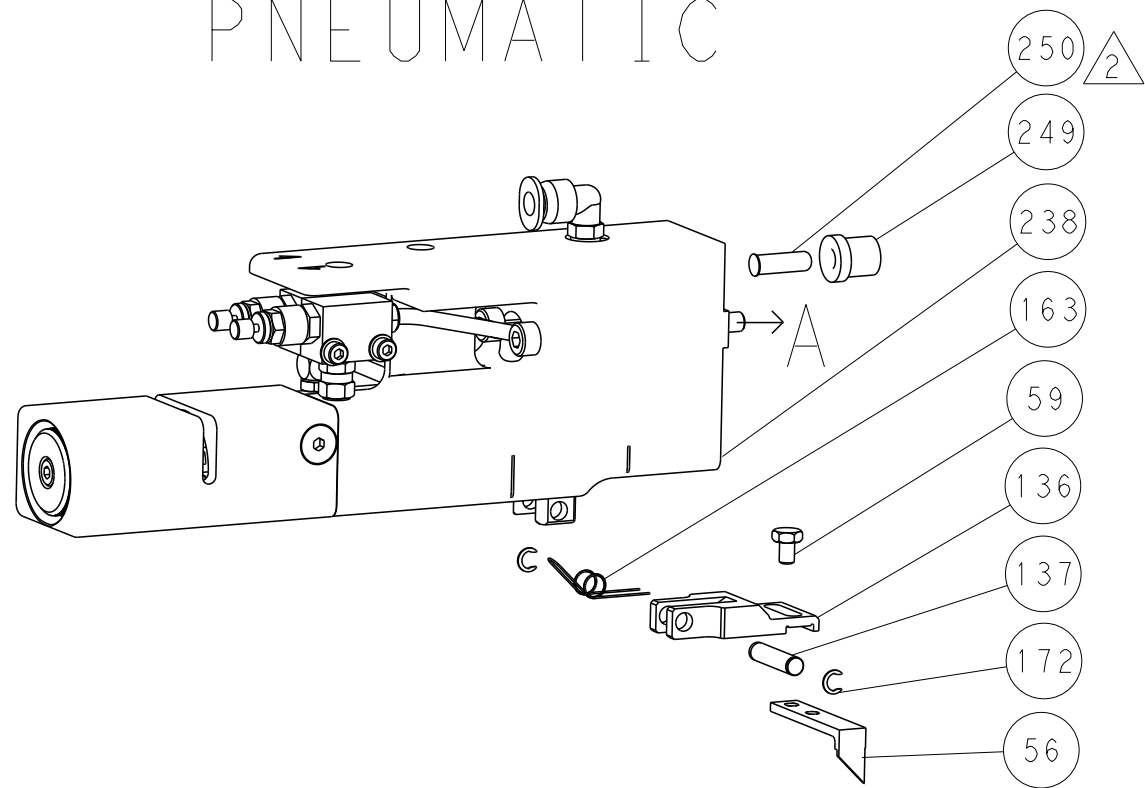
B

A

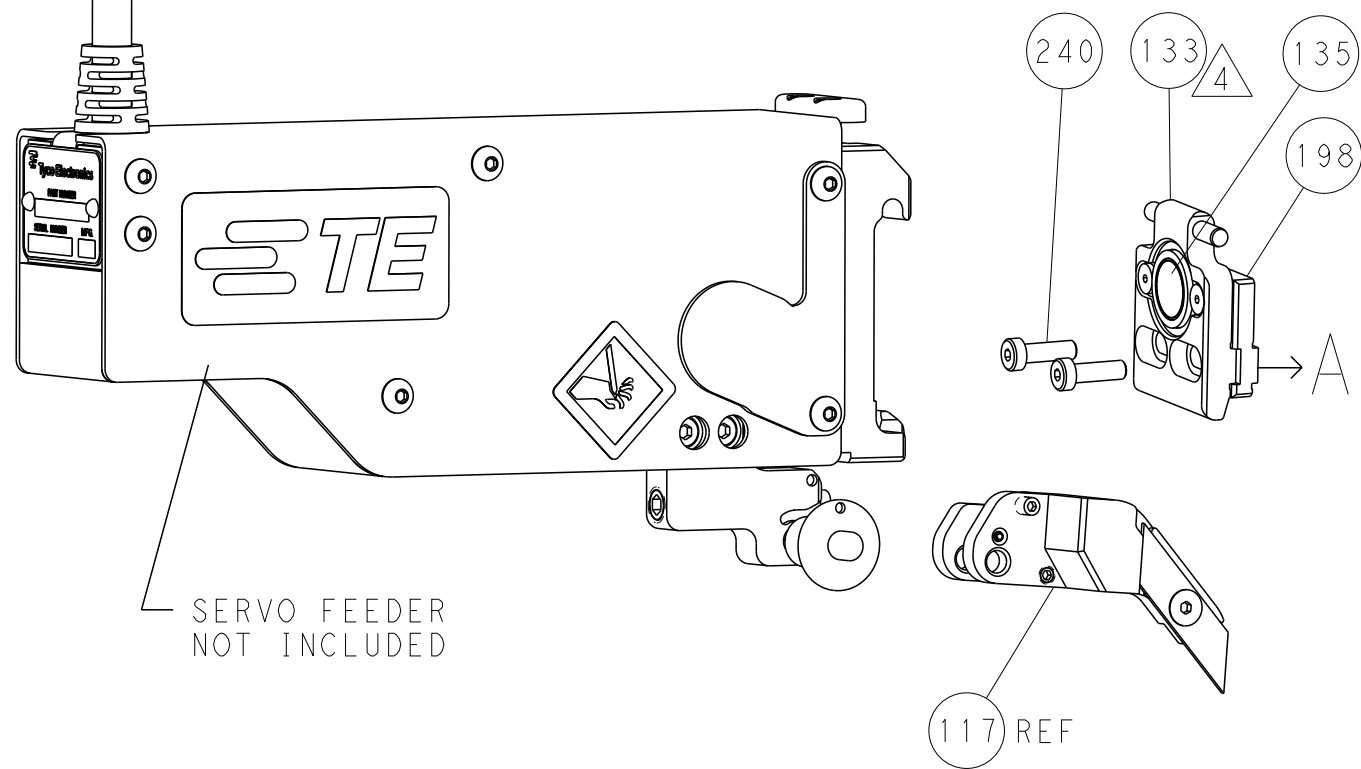
# FEED TYPE MECHANICAL



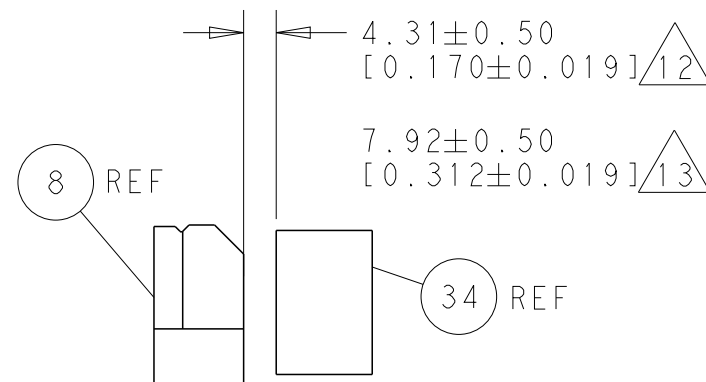
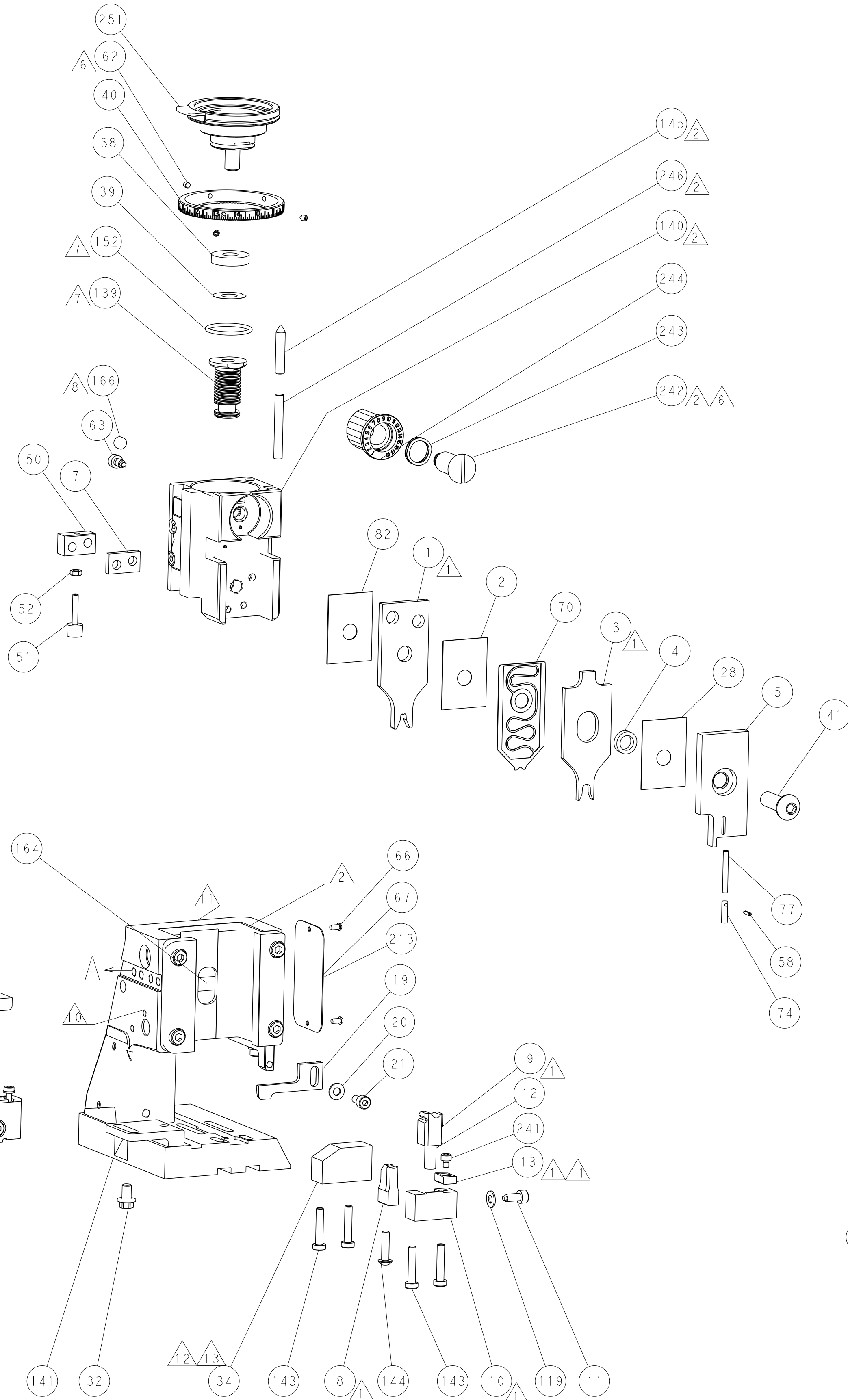
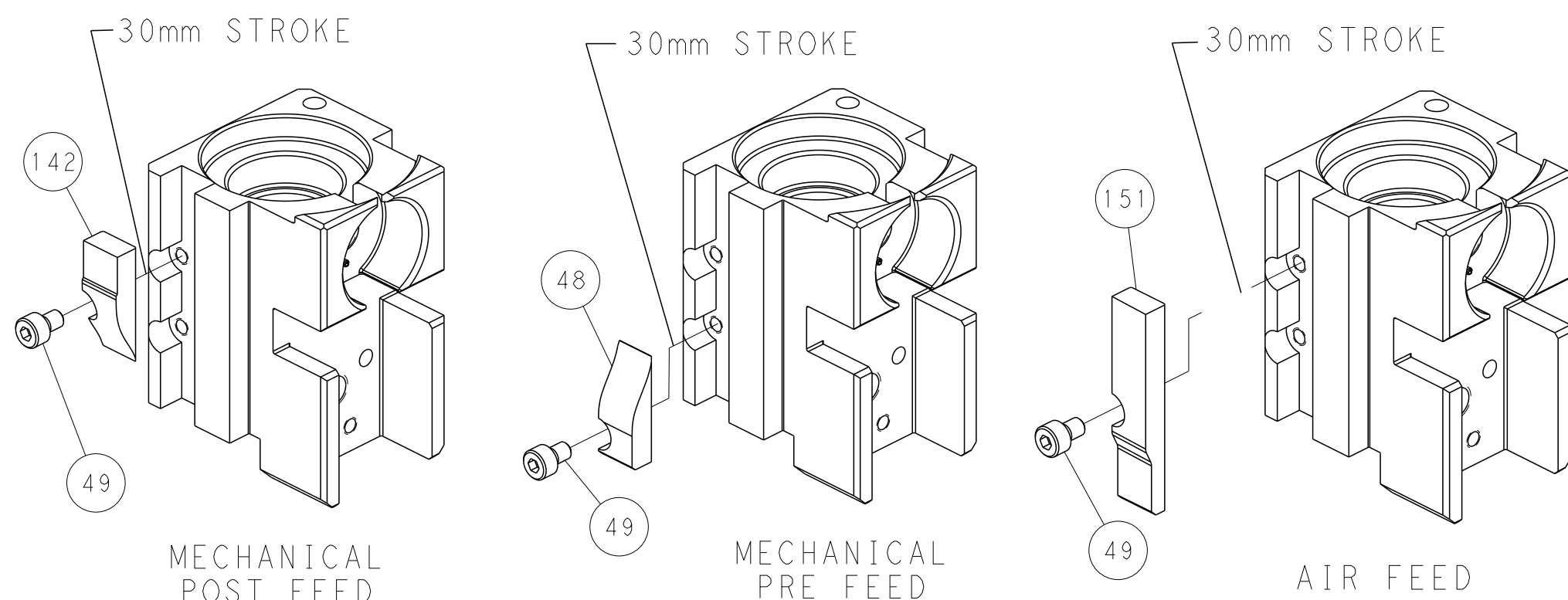
# PNEUMATIC



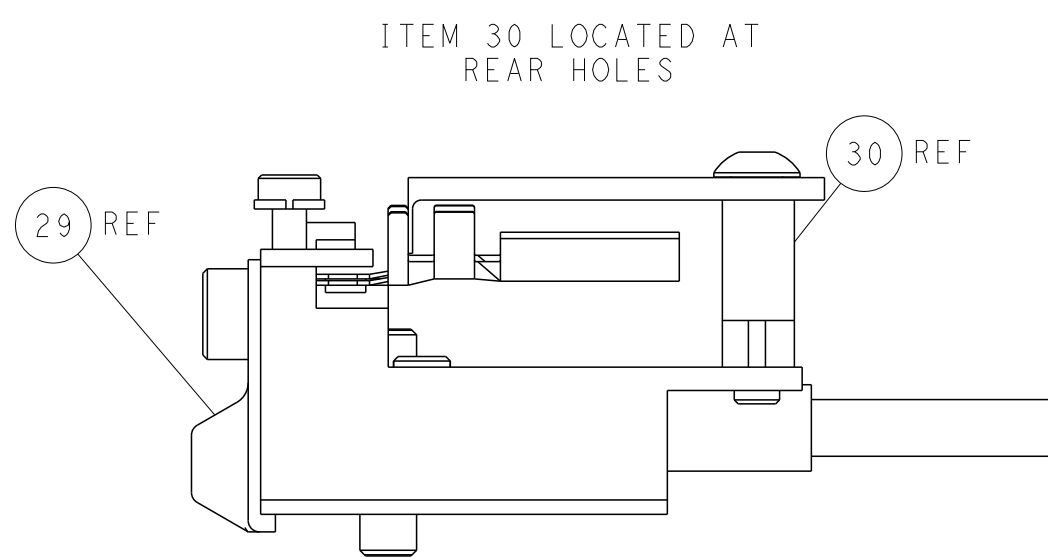
# SERVO LATCH PLATE



# CAM POSITIONS



TERMINAL SUPPORT LOCATION



FEED TRACK POSITION  
GUIDE BY INSULATION BARREL

PACIFIC VERSION  
Shown on sheets 3 of 4 & 4 of 4  
(Atlantic version shown on sheets 1 of 4 & 2 of 4)

THIS DRAWING IS UNPUBLISHED. IT IS SUBJECT TO CHANGE WITHOUT NOTICE. THE USER SHALL BE RESPONSIBLE FOR THE LATEST VERSION.		DWN R. KNEPPER 22-Jan-14	TE Connectivity Harrisburg, PA 17105-3608	
DIMENSIONS: mm		CHK G. BAILEY 22-Jan-14	NAME Ocean Side Feed Applicator	
TOLERANCES UNLESS OTHERWISE SPECIFIED: 0 PLC ±.5 1 PLC ±0.13 2 PLC ±0.13 3 PLC ±0.013 4 PLC ±0.001 ANGLES FINISH		APVD M. CLIFFORD 22-Jan-14	SIZE A1	
MATERIAL -		PRODUCT SPEC -	CAGE CODE 00779	
		APPLICATION SPEC -	DRAWING NO C=2266127	
		WEIGHT -	RESTRICTED TO -	
		Customer Accessible Production Drawing	SCALE 1:2	
			SHEET 4 of 4	
			REV A1	

SHEETS 1 & 2 ARE NOT REQUIRED FOR PACIFIC VERSION