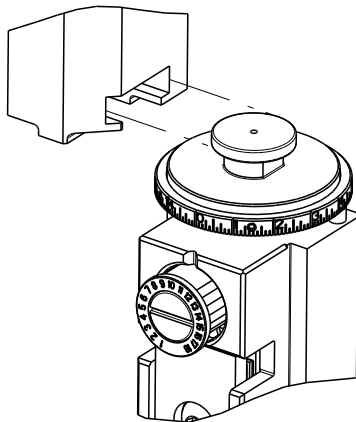









8		7	
THIS DRAWING IS UNPUBLISHED.		RELEASED FOR PUBLICATION	
© COPYRIGHT 20		BY TYCO ELECTRONICS CORPORATION. ALL RIGHTS RESERVED.	
ATLANTIC VERSION TERMINATOR INTERFACE ADAPTER		PART NUMBER	REVISION
		2266126-1	A
		2266126-2	A
		2266126-5	A
		2266126-6	A
		2266126-7	A
		7-2266126-7	A
		7-2266126-8	A
		DESCRIPTION	
		FINE CRIMP HEIGHT ADJUST	
		FINE CRIMP HEIGHT ADJUST	
		FINE CRIMP HEIGHT ADJUST	
		NON-CRIMP HEIGHT ADJUST	
		FINE CRIMP HEIGHT ADJUST	
		CRIMP TOOLING KIT	
		APPLICATOR CONVERSION KIT	
APPLICATOR DATA			
CRIMP	SIZE	TYPE	
WIRE	2.97 mm [ .117 ]	F	
INSUL	2.90 mm [ .114 ]	O	
APPLICATOR INSTRUCTIONS 408-10389			
APPLICATOR CONVERSION			
PART NUMBER	INSULATION DIA		
7-2266124-8	Ø 3.83-4.47mm		
7-2266125-8	Ø 3.30-3.91mm		
7-2266126-8	Ø 2.87-3.43mm		

15 APPLICATOR CONVERSION KITS	
PART NUMBER	INSULATION DIAMETER RANGE
7-2266124-8	Ø 3.83-4.47mm [ .151-.176]
7-2266125-8	Ø 3.30-3.91mm [ .130-.154]
7-2266126-8	Ø 2.87-3.43mm [ .113-.135]

TERMINAL DATA: DEUTSCH TERMINAL DEUTSCH CRIMP SPECIFICATION			
TERMINAL NAME: STAMPED CONTACT PIN SIZE 12			
WIRE STRIP LENGTH 5.71-6.99 mm [.225-.275 IN]		INSULATION DIAMETER RANGE Ø2.87-3.43 mm [.113-.135 IN]	
TERMINAL APPLICATION SPECIFICATION  0425-208-0000 Rev G		- -	
TERMINALS APPLIED 			
TE TERMINAL	DEUTSCH TERMINAL	TE TERMINAL	DEUTSCH TERMINAL
1572028-2	1060-12-0144	1572028-1	1060-12-0166

TERMINAL DATA: DEUTSCH TERMINAL DEUTSCH CRIMP SPECIFICATION			
TERMINAL NAME: STAMPED CONTACT SOCKET SIZE 12			
WIRE STRIP LENGTH 5.71-6.99 mm [.225-.275 IN]		INSULATION DIAMETER RANGE Ø2.87-3.43 mm [.113-.135 IN]	
TERMINAL APPLICATION SPECIFICATION 0425-208-0000 Rev G		-	
-		-	
TERMINALS APPLIED 14			
TE TERMINAL	DEUTSCH TERMINAL	TE TERMINAL	DEUTSCH TERMINAL
286955-2	1062-12-0144	286955-1	1062-12-0166

WIRE SIZE			CRIMP HEIGHT mm [INCH]		CRIMP HEIGHT REFERENCE SETTING	
4.00mm2			2.24+0.03/-0.05 [0.088+0.01/-0.002]		4.9	
12 AWG			2.03+0.03/-0.05 [0.080+0.01/-0.002]		7.2	
3.00mm2			2.03+0.03/-0.05 [0.080+0.01/-0.002]		7.4	
2.50mm2			1.88+0.03/-0.05 [0.074+0.01/-0.002]		8.3	
14 AWG			1.78+0.03/-0.05 [0.070+0.01/-0.002]		9.7	
2.00mm2			1.78+0.03/-0.05 [0.070+0.01/-0.002]		9.7	




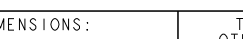
1. RECOMMENDED SPARE PARTS
2. GREASE BEARING SURFACES LIGHTLY
3. LUBRICATE DAILY PER THE APPLICATOR INSTRUCTION SHEET SUPPLIED WITH THE APPLICATOR.
4. APPLICATOR SPECIFIC DATA TO BE ENTERED INTO BLANK MEMORY CHIP AT ASSEMBLY. SEE BELOW FOR PART NUMBER:
  - MECHANICAL FEED WITH "SMART APPLICATOR" CONVERSION: 8-2266126-4
  - PNEUMATIC FEED WITH "SMART APPLICATOR" CONVERSION: 8-2266126-4
  - SERVO FEED WITH "FINE CRIMP HEIGHT ADJUST": 8-2266126-5
  - SERVO FEED WITH "NON-CRIMP HEIGHT ADJUST": 8-2266126-6
5. ADJUSTMENT OF THE STRIPPER MAY BE REQUIRED WHEN MOVING THE APPLICATOR BETWEEN BENCH AND LEADMAKER APPLICATIONS.
6. APPLY PART NUMBER 1-23419-5 LOCTITE TO THREADS OF ITEMS 62 & 242. FOR -6 ONLY APPLY PART NUMBER 1-23419-5 LOCTITE TO THREADS OF ITEMS 37 & 242.
7. GREASE THREADS, GROOVE AND O-RING ON ITEMS 35 & 252.
8. MAGNET, ITEM 166 MUST BE ORIENTED CORRECTLY IN ORDER TO PROPERLY ACTUATE THE COUNTER.
9. CRIMP HEIGHT REFERENCE SETTING WAS THE SETTING USED WHEN THE APPLICATOR WAS QUALIFIED AT THE FACTORY. ADJUSTMENT MAY BE NECESSARY WHEN RUNNING APPLICATOR IN THE FIELD.
10. SPARE FEED CAM STORAGE LOCATION REFER TO INSTRUCTION SHEET FOR ADDITIONAL INFORMATION.
11. TO CONVERT THE APPLICATOR TO A NON-CARRIER CUTTING STYLE, REMOVE ITEM 13 AND ATTACH TO THE LOCATION ON THE BACK SIDE OF THE HOUSING. REFER TO INSTRUCTION SHEET FOR ADDITIONAL INFORMATION.
12. WHEN ASSEMBLING A NON CRIMP HEIGHT ADJUST APPLICATOR (-6) USE SHIMS FROM ITEM 260 TO ACHIEVE A NOMINAL SHIM HEIGHT OF 3.56.
13. DIMENSION  $1.27 \pm 0.50$  [0.050  $\pm$  0.019] APPLIES TO PIN TERMINALS 1060-12-01XX.
14. DIMENSION  $7.92 \pm 0.50$  [0.312  $\pm$  0.019] APPLIES TO SOCKET TERMINALS 1062-12-01XX.
15. SEE APPROPRIATE APPLICATOR LOG SHEETS FOR APPLIED TERMINALS, WIRE RANGE AND

-	-	-	1	-	-	-	2119957-2	APPLICATOR SHIM PACK	260
-	-	1	-	1	1	1	8-21084-0	O-RING, .676 ID, .070 DIA. MAT.	252
-	-	-	-	-	1	-	2119640-1	PUSH ROD, AIR FEED	250
-	-	-	-	-	1	-	2079988-1	BUSHING, LCH5-12, MISUMI	249
-	-	-	-	-	1	-	2119641-1	FEED CAM, AIR FEED	248
-	-	1	-	1	1	1	2119798-1	DETENT PIN	247
-	-	1	-	1	1	1	1-22279-3	SPRING, COMPRESSION	246
-78	-77	-7	-6	-5	-2	-1	PART NO	DESCRIPTION	ITEM NO

ATLANTIC VERSION  
Shown on sheets 1 of 4 & 2 of 4  
(Pacific version shown on sheets 3 of 4 & 4 of 4)

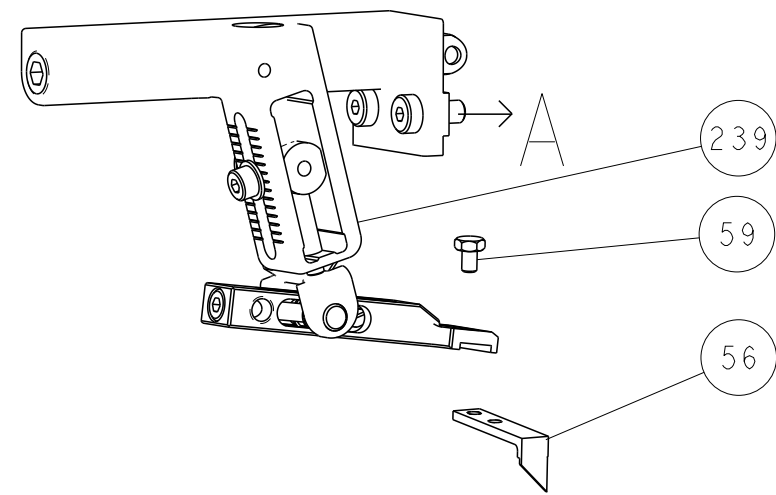
[illegible]

-	-	-	1	-	-	-	2119758-1	RAM, AMP STYLE, SIDE FEED, NON-ADJ.	245
-	-	-	1	1	1	1	2119082-9	CAM, SNAIL, INSULATION ADJUSTMENT	244
-	-	-	1	1	1	1	2079764-1	WASHER, WAVE SPRING, CREST-TO-CREST	243
-	-	-	1	1	1	1	2119083-1	RETAINER, INSULATION DIAL	242
-	-	-	1	1	1	1	7-18023-7	SCR, SKT HD CAP M3 X 4.0	241
-	-	-	2	2	-	-	2168400-6	SHCS, LOW HEAD, RoHS, M5 X 16	240
-	-	-	-	-	-	1	2119580-1	MECHANICAL FEED ASSEMBLY	239
-	-	-	-	-	1	-	2063440-1	AIR FEED MODULE	238
-	-	-	-	1	1	-	2119740-2	TAG, IDENTIFICATION	213
-	-	-	-	1	1	-	1901094-3	SPACER, FEEDER	198
-	-	-	-	-	2	-	21045-3	RING, RETAIN, EXTERN, 3/16 CRESCENT	172
-	-	-	1	1	1	1	994969-1	MAGNET, RARE EARTH HIGH ENERGY	166
-	-	-	REF	REF	REF	REF	994970-2	COUNTER, MAGNETIC	164
-	-	-	-	-	1	-	240638-1	SPRING, FEED FINGER	163
-	-	-	-	-	1	-	3-23627-7	PIN, RETAIN, GRVD, 3/16 X .854	137
-	-	-	-	-	1	-	2119799-1	HOLDER,FEED FINGER, AF	136
-	-	-	-	REF	REF	-	SEE NOTE 4	MEMORY CHIP, PROGRAMMED	135
-	-	-	-	1	1	-	1633743-1	SERVO FEED LATCH ASM	133
-	-	-	1	1	1	1	1-18028-2	WASHER, FLAT, REG M4	119
-	-	-	-	REF	REF	-	2119944-1	FEED FINGER ASSEMBLY,SF	117
-	-	-	1	1	1	1	455888-4	SPACER, CRIMPER	82
-	-	-	1	1	1	1	5-547505-2	SPRING, COMPRESSION	77
-	-	-	1	1	1	1	854769-4	HOLDER, INS	74
1	-	-	-	-	-	-	2266126	PRINT, APPLICATOR LOG SHEET	72
-	-	-	1	1	1	1	2119956-1	DOCUMENTATION PACKAGE	71
-	-	-	1	1	1	1	2119791-9	DEPRESSOR, WIRE	70
-	-	-	1	-	-	1	2119740-1	TAG,IDENTIFICATION	67
-	-	-	2	2	2	2	2168078-1	SCREW, DRIVE, RH, RoHS, 2 x .188	66
-	-	-	1	-	1	1	2119793-1	LIMITER, ADJUSTMENT BOLT	63
-	-	-	3	-	3	3	992763-5	SCR, SET, SOC, CONE POINT, M3 x 4.0	62
-	-	-	1	1	1	1	2079383-4	SCR, BHSC, RoHS (M4 X 8)	60
-	-	-	-	-	1	1	5-18022-5	SCR, HEX HD CAP, M4 X 6.0	59
-	-	-	1	1	1	1	21028-2	PIN, SLOTTED SPRING .062 X .250	58
-	-	-	-	-	1	1	1338685-1	PAWL, FEED	56
-	-	-	4	4	4	4	2168400-1	SHCS, LOW HEAD, RoHS, M4 X 12	54
2	-	-	2	2	2	2	2168083-8	SCR, SKT HD CAP, RoHS, M4 X 16	53
-	-	-	1	1	1	1	5018030-1	NUT, HEX, REG, RoHS, M3	52
-	-	-	1	1	1	1	811242-5	BUMPER, HOLD DOWN	51
-	-	-	1	1	1	1	690753-2	SPACER, TONKER	50
-	-	-	-	-	1	2	18023-9	SCR, SKT HD CAP M4 X 6.0	49
-	-	-	-	-	-	1	2119652-1	FEED CAM, PRE FEED	48
-	-	-	-	-	-	1	2119653-1	FEED CAM, POST FEED	47
-	-	-	1	1	1	1	2119656-9	APPLICATOR BASIC ASSEMBLY, SF	46
-	-	-	1	-	1	1	2119370-1	RAM, AMP STYLE, SIDE FEED	44
-	-	-	1	1	1	1	2079383-7	SCR, BHSC, RoHS (M8 X 25)	41
-	-	-	1	-	1	1	2119645-1	DISC, NUMBERED FA WIRE ADJUSTMENT	40
-	-	-	1	-	1	1	2119957-1	APPLICATOR SHIM PACK	39
1	-	-	1	1	1	1	2119644-2	RAM WASHER, PRECISION	38
-	-	-	1	1	1	1	2119085-1	FA HEAD, ATLANTIC STYLE	37
-	-	-	1	-	1	1	2119092-1	BOLT, ADJUSTMENT	35
-	-	-	1	1	1	1	1752356-6	SUPPORT, TERMINAL	34
-	-	-	2	2	2	2	2079383-5	SCR, BHSC, RoHS (M4 X 20)	33
-	-	-	1	1	1	1	2161328-1	HEX HEAD, FLANGED, M5 x 8mm LONG	32
-	-	-	1	1	1	1	1-1320908-0	SPACER, STRIP GUIDE	30
-	-	-	1	1	1	1	2119959-1	ASSEMBLY, STRIP GUIDE	29
-	-	-	1	1	1	1	455888-3	SPACER, CRIMPER	28
-	-	-	1	1	1	1	1320928-6	STRIP GUIDE	24
-	-	-	1	1	1	1	2168083-2	SCR, SKT HD CAP, RoHS, M4 X 8.0	21
-	-	-	1	1	1	1	1-18028-2	WASHER, FLAT, REG M4	20
-	-	-	1	1	1	1	2119533-1	STRIPPER, SIDE FEED	19
-	-	-	1	1	1	1	2119806-1	INSERT, SHEAR	13
-	-	-	1	1	1	1	3-22280-3	SPRING, COMPRESSION	12
-	-	-	1	1	1	1	1-356885-4	STOP, SHEAR	11
-	-	-	1	1	1	1	2119805-1	SHEAR HOLDER, FRONT	10
-	-	-	1	1	1	1	1803095-1	FLOATING SHEAR, FRONT	9
1	1	1	1	1	1	1	3-1803054-3	ANVIL, COMBINATION	8
1	-	-	1	1	1	1	240641-4	SPACER	7
-	-	-	-	-	-	-	-	-	6
-	-	-	1	1	1	1	1-2119780-4	DEPRESSOR, SHEAR	5
1	-	-	1	1	1	1	238011-2	BLOCK, CRIMPER SPACER	4
1	1	1	1	1	1	1	2-1803019-8	CRIMPER, INSULATION O	3
-	-	-	1	1	1	1	455888-4	SPACER, CRIMPER	2
-	1	1	1	1	1	1	4-1633713-6	CRIMPER, WIRE PREMIUM	1

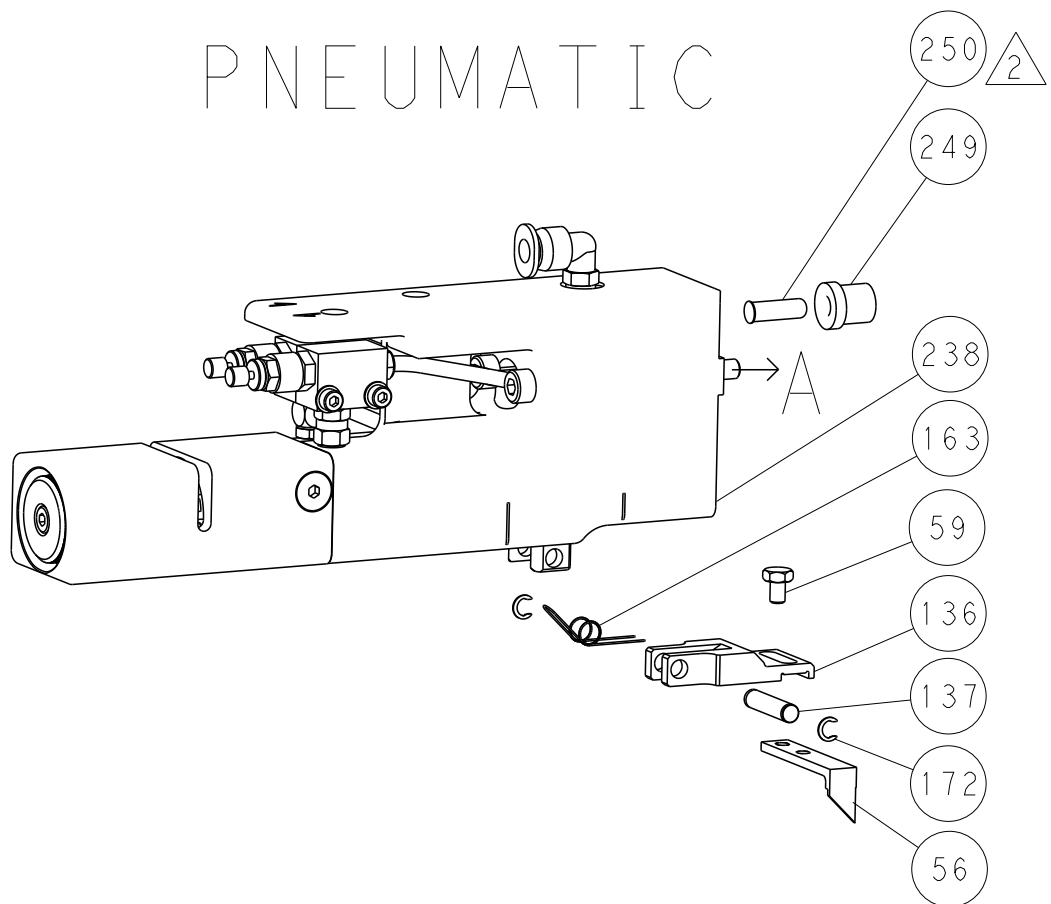
<small>THIS DRAWING IS A CONTROLLED DOCUMENT FOR FPD ELECTRONICS CORPORATION IT IS SUBJECT TO DESIGN AND/OR CONSTRUCTION AND/OR MANUFACTURING REVISIONS SHOULD BE CONTACTED FOR THE LATEST REVISION.</small>		<small>DWN</small> <b>R.KNPPFR</b> 22-0ct-13 <small>CHR</small> <b>G.BAILEY</b> 22-0ct-13 <small>APVD</small> <b>M.CLIFFORD</b> 22-0ct-13		 TE Connectivity Harrisburg, PA 17105-3608	
DIMENSIONS: mm		TO BRACKETS UNLESS OTHERWISE SPECIFIED:		NAME Ocean Side Feed Applicator	
		PRODUCT SPEC - APPLICATION SPEC -		SIZE A1	
MATERIAL FINISH		WEIGHT -		CAGE CODE 00779	
				DRAWING NO C=2266126	
				RESTRICTED TO -	
Customer Accessible Production Drawing				SCALE 1:2 SHEET 1 OF 4 REV. A1	

LOC		DIST		REVISONS				
A	66	P	LTR	DESCRIPTION	DATE	DWN	APVD	
		-		SEE SHEET 1	-	-	-	

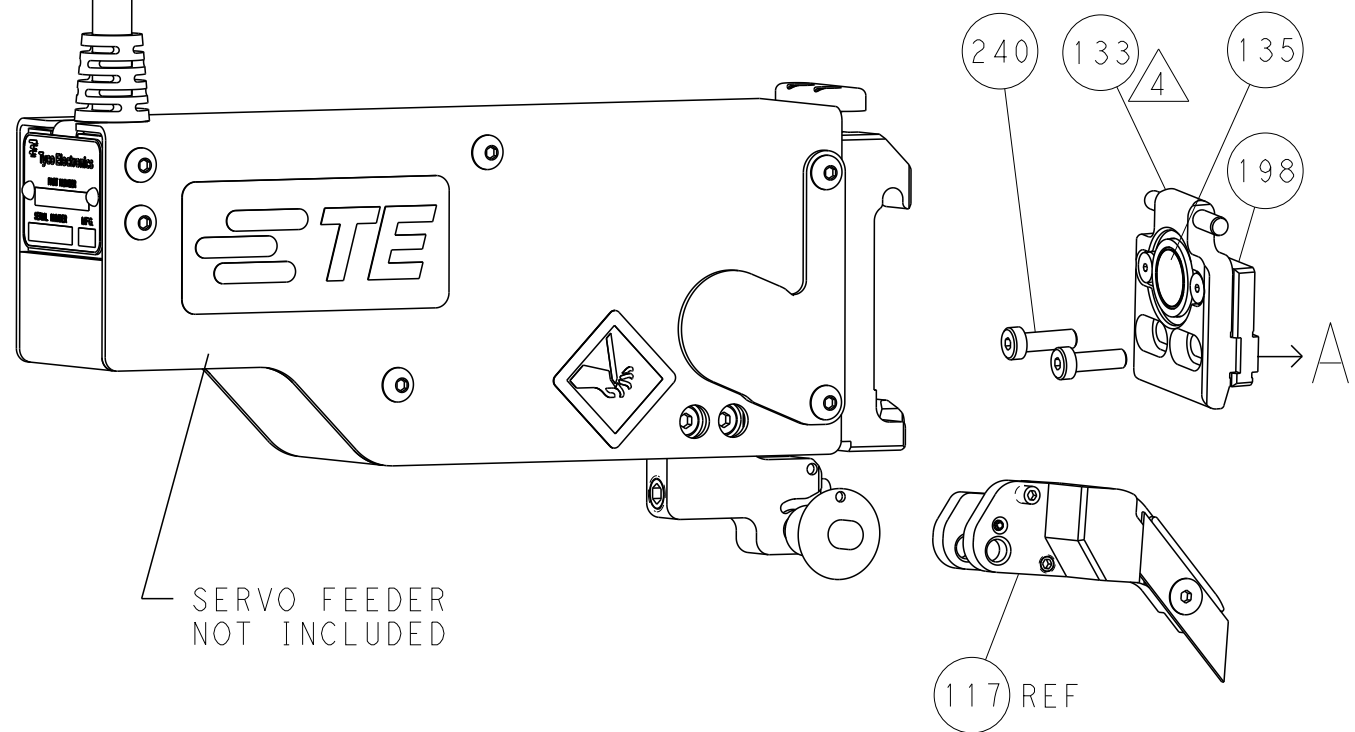
FEED TYPE  
MECHANICAL



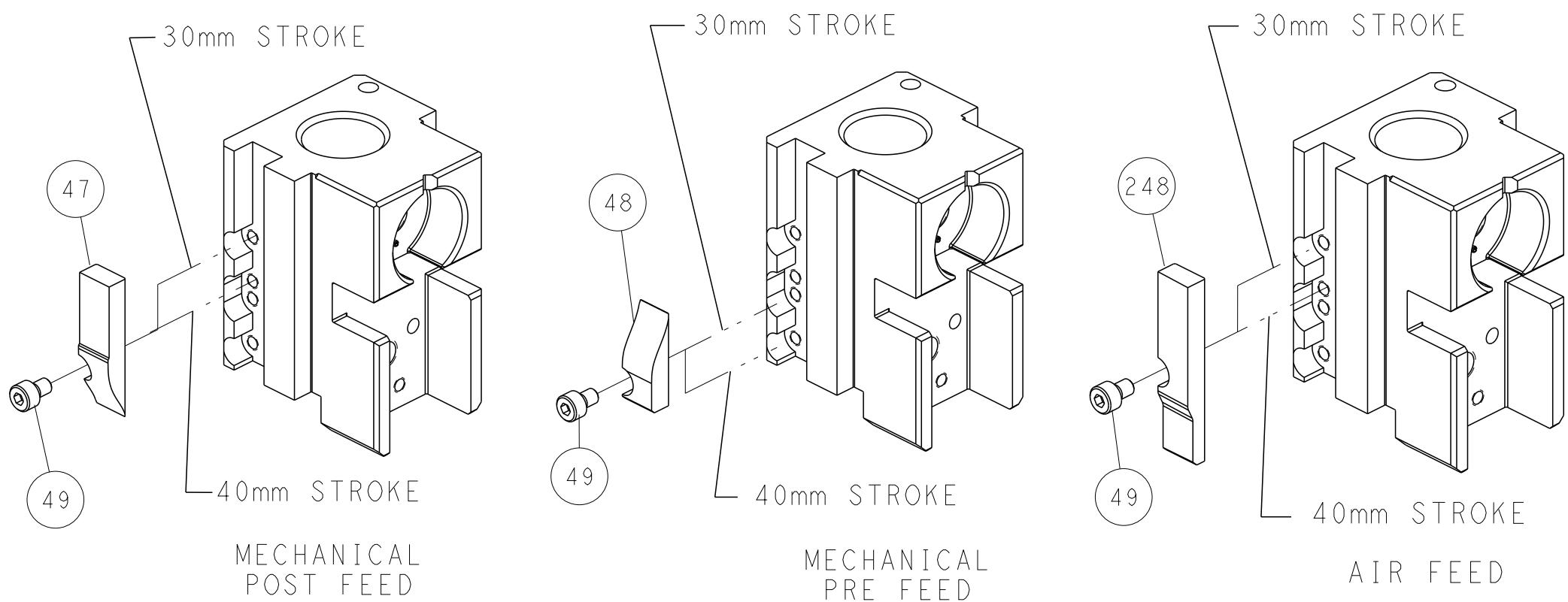
PNEUMATIC



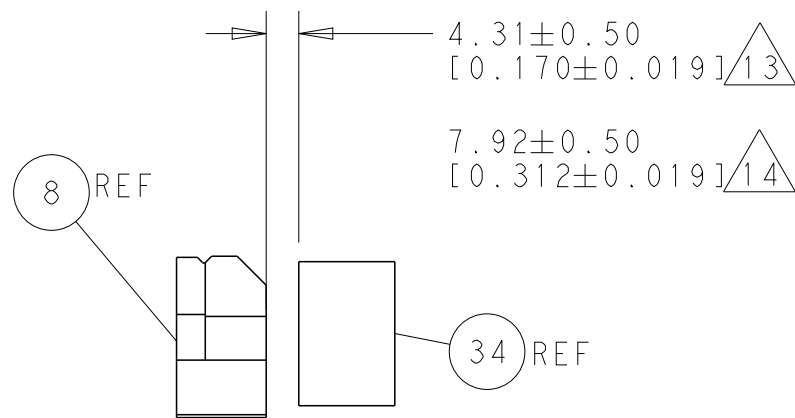
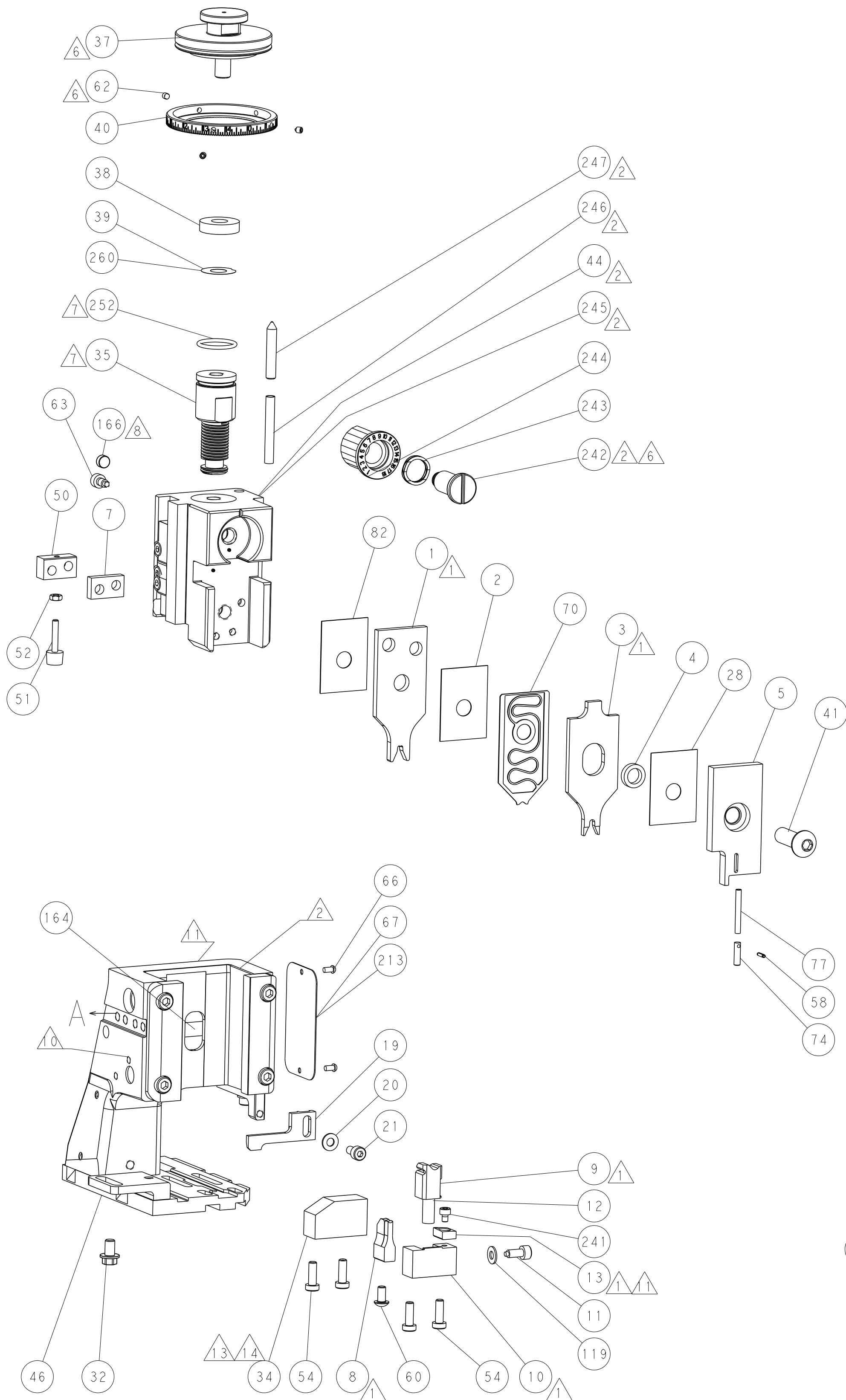
SERVO  
LATCH PLATE



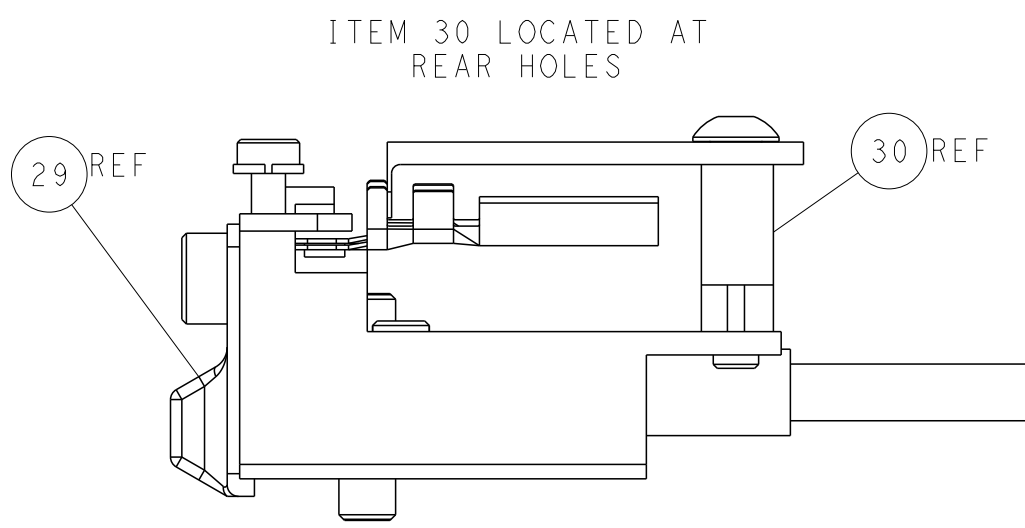
CAM POSITIONS



ATLANTIC VERSION  
Shown on sheets 1 of 4 & 2 of 4  
(Pacific version shown on sheets 3 of 4 & 4 of 4)

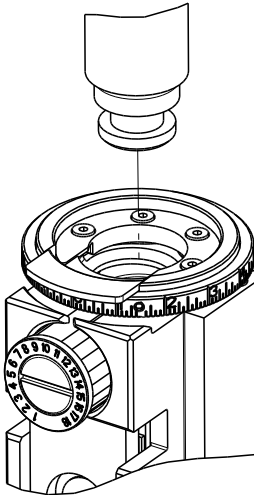


TERMINAL SUPPORT LOCATION



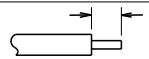

FEED TRACK POSITION  
GUIDE BY INSULATION BARREL

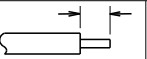

THIS DRAWING IS UNPUBLISHED. IT IS SUBJECT TO CHANGE WITHOUT NOTICE. IT IS SUBJECT TO CHANGE WITHOUT NOTICE. IT IS SUBJECT TO CHANGE WITHOUT NOTICE. IT IS SUBJECT TO CHANGE WITHOUT NOTICE.				DWN R. KNEPPER 22-Oct-13				TE Connectivity			
CHK G. BAILEY 22-Oct-13				APVD M. CLIFFORD 22-Oct-13				Harrisburg, PA 17105-3608			
PRODUCT SPEC				NAME				Ocean Side Feed			
APPLICATION SPEC				SIZE				A1			
MATERIAL				WEIGHT				Customer Accessible Production Drawing			
FINISH				SCALE				1:2			
				SHEET				2 of 4			
				REV				A1			

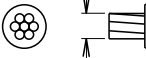

8		7	
THIS DRAWING IS UNPUBLISHED.		RELEASED FOR PUBLICATION	
COPYRIGHT 20		20	
BY TYCO ELECTRONICS CORPORATION. ALL RIGHTS RESERVED.			
PACIFIC VERSION TERMINATOR INTERFACE ADAPTER	PART NUMBER	REVISION	DESCRIPTION
	2-2266126-1	A	FINE CRIMP HEIGHT ADJUST
	2-2266126-2	A	FINE CRIMP HEIGHT ADJUST
	2-2266126-5	A	FINE CRIMP HEIGHT ADJUST
	2-2266126-7	A	FINE CRIMP HEIGHT ADJUST
	7-2266126-7	A	CRIMP TOOLING KIT
	7-2266126-8	A	APPLICATOR CONVERSION KIT

APPLICATOR DATA		
CRIMP	SIZE	TYPE
WIRE	2.97 mm [.117]	F
INSUL	2.90 mm [.114]	O
APPLICATOR INSTRUCTIONS 408-10389		

APPLICATOR CONVERSION KITS	
PART NUMBER	INSULATION DIAMETER RANGE
7-2266124-8	Ø3.83-4.47mm [.151-.176]
7-2266125-8	Ø3.30-3.91mm [.130-.154]
7-2266126-8	Ø2.87-3.43mm [.113-.135]

TERMINAL DATA: DEUTSCH TERMINAL DEUTSCH CRIMP SPECIFICATION			
TERMINAL NAME: STAMPED CONTACT PIN SIZE 12			
WIRE STRIP LENGTH 5.71-6.99 mm [.225-.275 IN]		INSULATION DIAMETER RANGE Ø2.87-3.43 mm [.113-.135 IN]	
TERMINAL APPLICATION SPECIFICATION	0425-208-0000 Rev G	-	-
TERMINALS APPLIED	-	-	-
TE TERMINAL	DEUTSCH TERMINAL	TE TERMINAL	DEUTSCH TERMINAL
1572028-2	1060-12-0144	1572028-1	1060-12-0166

TERMINAL DATA: DEUTSCH TERMINAL DEUTSCH CRIMP SPECIFICATION			
TERMINAL NAME: STAMPED CONTACT SOCKET SIZE 12			
WIRE STRIP LENGTH 5.71-6.99 mm [.225-.275 IN]		INSULATION DIAMETER RANGE Ø2.87-3.43 mm [.113-.135 IN]	
TERMINAL APPLICATION SPECIFICATION	0425-208-0000 Rev G	-	-
TERMINALS APPLIED	-	-	-
TE TERMINAL	DEUTSCH TERMINAL	TE TERMINAL	DEUTSCH TERMINAL
286955-2	1062-12-0144	286955-1	1062-12-0166

WIRE SIZE		CRIMP HEIGHT mm [INCH]		CRIMP HEIGHT REFERENCE SETTING
4.00mm2		2.24+0.03/-0.05 [.088+.001/- .002]		4.9
12 AWG		2.03+0.03/-0.05 [.080+.001/- .002]		7.2
3.00mm2		2.03+0.03/-0.05 [.080+.001/- .002]		7.4
2.50mm2		1.88+0.03/-0.05 [.074+.001/- .002]		8.3
14 AWG		1.78+0.03/-0.05 [.070+.001/- .002]		9.7
2.00mm2		1.78+0.03/-0.05 [.070+.001/- .002]		9.7



- RECOMMENDED SPARE PARTS
- GREASE BEARING SURFACES LIGHTLY
3. LUBRICATE DAILY PER THE APPLICATOR INSTRUCTION SHEET SUPPLIED WITH THE APPLICATOR.
4. APPLICATOR SPECIFIC DATA TO BE ENTERED INTO BLANK MEMORY CHIP AT ASSEMBLY. SEE BELOW FOR PART NUMBER:  
MECHANICAL FEED WITH "SMART APPLICATOR" CONVERSION: 8-2266126-4  
PNEUMATIC FEED WITH "SMART APPLICATOR" CONVERSION: 8-2266126-4  
SERVO FEED WITH "FINE CRIMP HEIGHT ADJUST": 8-2266126-5
5. ADJUSTMENT OF THE STRIPPER MAY BE REQUIRED WHEN MOVING THE APPLICATOR BETWEEN BENCH AND LEADMAKER APPLICATIONS.
6. APPLY PART NUMBER 1-23419-5 LOCTITE TO THREADS OF ITEMS 62 & 242.
7. GREASE THREADS, GROOVE AND O-RING ON ITEMS 139 & 152.
8. MAGNET MUST BE ORIENTED CORRECTLY IN ORDER TO PROPERLY ACTUATE THE COUNTER.
9. CRIMP HEIGHT REFERENCE SETTING WAS THE SETTING USED WHEN THE APPLICATOR WAS QUALIFIED AT THE FACTORY. ADJUSTMENT MAY BE NECESSARY WHEN RUNNING APPLICATOR IN THE FIELD.
10. SPARE FEED CAM STORAGE LOCATION REFER TO INSTRUCTION SHEET FOR ADDITIONAL INFORMATION.
11. TO CONVERT THE APPLICATOR TO A NON-CARRIER CUTTING STYLE, REMOVE ITEM 13 AND ATTACH TO THE LOCATION ON BACK SIDE OF THE HOUSING. REFER TO INSTRUCTION SHEET FOR ADDITIONAL INFORMATION.
12. DIMENSION 1.27±0.50 [0.050±0.019] APPLIES TO PIN TERMINALS 1060-12-01XX.
13. DIMENSION 7.92±0.50 [0.312±0.019] APPLIES TO SOCKET TERMINALS 1062-12-01XX.
14. SEE APPROPRIATE APPLICATOR LOG SHEETS FOR APPLIED TERMINALS, WIRE RANGE AND MEMORY CHIP.

\*WARNING  
ON INSTALLATION, SET WIRE DISC, ITEM 40 TO LARGEST WIRE SIZE SETTING. USE OF SETTINGS BELOW MINIMUM REQUIRED CRIMP HEIGHT SETTING WILL CAUSE DAMAGE TO CRIMP TOOLING.

-	-	1	1	1	1	2119782-1	FINE ADJUST HEAD ASM, PACIFIC STYLE	251
-	-	-	-	1	-	2119640-1	PUSH ROD, AIR FEED	250
-	-	-	-	1	-	2079988-1	BUSHING, LCH5-12, MISUMI	249
-	-	1	1	1	1	1-22279-3	SPRING, COMPRESSION	246
-	-	1	1	1	1	2119082-9	CAM, SNAIL, INSULATION ADJUSTMENT	244
-78	-77	-27	-25	-22	-21	PART NO	DESCRIPTION	ITEM NO

PACIFIC VERSION  
Shown on sheets 3 of 4 & 4 of 4  
(Atlantic version shown on sheets 1 of 4 & 2 of 4)

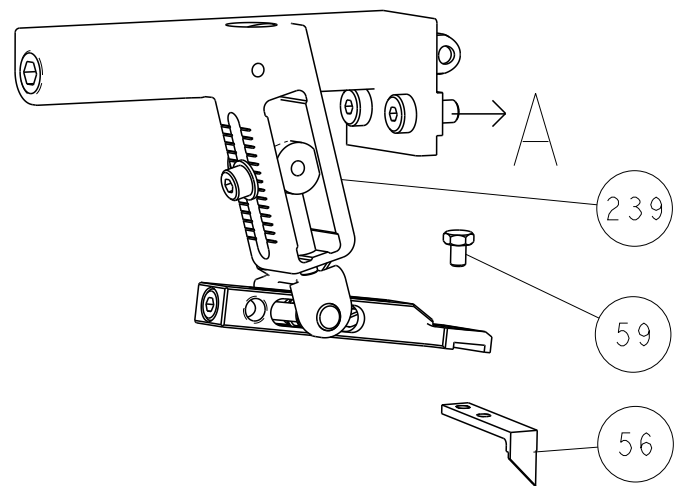
SET UP GAUGE 2119599-1	LOC A	DIST 66	P	LTR	DESCRIPTION	DATE	OWN	APVD
			-	-	SEE SHEET 1	-	-	-

6	-	-	1	1	1	1	2079764-1	WASHER, WAVE SPRING, CREST-TO-CREST	243
	-	-	1	1	1	1	2119083-1	RETAINER, INSULATION DIAL	242
	-	-	1	1	1	1	7-18023-7	SCR, SKT HD CAP M3 X 4.0	241
	-	-	-	2	-	-	2168400-6	SHCS, LOW HEAD, RoHS, M5 X 16	240
	-	-	-	-	-	1	2119580-1	MECHANICAL FEED ASSEMBLY	239
	-	-	-	-	1	-	2063440-1	AIR FEED MODULE	238
	-	-	-	1	-	-	2119740-2	TAG, IDENTIFICATION	213
	-	-	-	1	-	-	1901094-3	SPACER, FEEDER	198
	-	-	-	-	2	-	21045-3	RING, RETAIN, EXTERN, 3/16 CRESCENT	172
	-	-	1	1	1	1	994969-1	MAGNET, RARE EARTH HIGH ENERGY	166
	-	-	REF	REF	REF	REF	994970-2	COUNTER, MAGNETIC	164
	-	-	-	-	1	-	240638-1	SPRING, FEED FINGER	163
	-	-	1	1	1	1	8-21084-1	O-RING, .801 ID, .070 DIA. MAT.	152
	-	-	-	-	1	-	2119641-2	FEED CAM, AIR FEED	151
	-	-	1	1	1	1	2119798-2	DETENT PIN	145
	-	-	1	1	1	1	2079383-8	SCR, BHSC, RoHS (M4 X 16)	144
	-	-	4	4	4	4	2168400-5	SHCS, LOW HEAD, RoHS, M4 X 20	143
	-	-	-	-	-	1	2119653-2	FEED CAM, POST FEED	142
	-	-	1	1	1	1	1-2119656-0	APPLICATOR BASIC ASSEMBLY, SF	141
	-	-	1	1	1	1	2119650-1	RAM, ASIAN STYLE, SIDE FEED	140
	-	-	1	1	1	1	2119092-2	BOLT, ADJUSTMENT	139
	-	-	-	-	1	-	3-23627-7	PIN, RETAIN, GRVD, 3/16 X .854	137
	-	-	-	-	1	-	2119799-1	HOLDER,FEED FINGER, AF	136
	-	-	-	REF	-	-	SEE NOTE 4	MEMORY CHIP, PROGRAMMED	135
	-	-	-	1	-	-	1633743-1	SERVO FEED LATCH ASM	133
	-	-	1	1	1	1	1-18028-2	WASHER, FLAT, REG M4	119
	-	-	-	REF	-	-	2119944-1	FEED FINGER ASSEMBLY,SF	117
	-	-	1	1	1	1	455888-4	SPACER, CRIMPER	82
	-	-	1	1	1	1	5-547505-2	SPRING, COMPRESSION	77
	-	-	1	1	1	1	854769-4	HOLDER, INS	74
1	-	-	-	-	-	-	2266126	PRINT, APPLICATOR LOG SHEET	72
	-	-	1	1	1	1	2119956-1	DOCUMENTATION PACKAGE	71
	-	-	1	1	1	1	2119791-9	DEPRESSOR, WIRE	70
	-	-	1	-	1	1	2119740-1	TAG,IDENTIFICATION	67
	-	-	2	2	2	2	2168078-1	SCREW, DRIVE, RH, RoHS, 2 x .188	66
	-	-	1	1	1	1	2119793-1	LIMITER, ADJUSTMENT BOLT	63
6	-	-	3	3	3	3	992763-5	SCR, SET, SOC, CONE POINT, M3 x 4.0	62
	-	-	-	-	1	1	5-18022-5	SCR, HEX HD CAP, M4 X 6.0	59
	-	-	1	1	1	1	21028-2	PIN, SLOTTED SPRING .062 X .250	58
	-	-	-	-	1	1	1338685-1	PAWL, FEED	56
2	-	-	2	2	2	2	2168083-8	SCR, SKT HD CAP, RoHS, M4 X 16	53
	-	-	1	1	1	1	5018030-1	NUT, HEX, REG, RoHS, M3	52
	-	-	1	1	1	1	811242-5	BUMPER, HOLD DOWN	51
	-	-	1	1	1	1	690753-2	SPACER, TONKER	50
	-	-	-	-	1	2	18023-9	SCR, SKT HD CAP M4 X 6.0	49
	-	-	-	-	-	1	2119652-1	FEED CAM, PRE FEED	48
	-	-	1	1	1	1	2079383-7	SCR, BHSC, RoHS (M8 X 25)	41
	-	-	1	1	1	1	2119645-1	DISC, NUMBERED FA WIRE ADJUSTMENT	40
	-	-	1	1	1	1	2119957-1	APPLICATOR SHIM PACK	39
1	-	-	1	1	1	1	2119644-2	RAM WASHER, PRECISION	38
3	-	-	1	1	1	1	1752356-6	SUPPORT, TERMINAL	34
	-	-	2	2	2	2	2079383-5	SCR, BHSC, RoHS (M4 X 20)	33
	-	-	1	1	1	1	2161328-1	HEX HEAD, FLANGED, M5 x 8mm LONG	32
	-	-	1	1	1	1	1-1320908-0	SPACER, STRIP GUIDE	30
	-	-	1	1	1	1	2119959-1	ASSEMBLY, STRIP GUIDE	29
	-	-	1	1	1	1	455888-3	SPACER, CRIMPER	28
	-	-	1	1	1	1	1320928-6	STRIP GUIDE	24
	-	-	1	1	1	1	2168083-2	SCR, SKT HD CAP, RoHS, M4 X 8.0	21
	-	-	1	1	1	1	1-18028-2	WASHER, FLAT, REG M4	20
	-	-	1	1	1	1	2119533-1	STRIPPER, SIDE FEED	19
1	-	-	1	1	1	1	2119806-1	INSERT, SHEAR	13
	-	-	1	1	1	1	3-22280-3	SPRING, COMPRESSION	12
	-	-	1	1	1	1	1-356885-4	STOP, SHEAR	11
1	-	-	1	1	1	1	2119805-1	SHEAR HOLDER, FRONT	10
1	-	-	1	1	1	1	1803095-1	FLOATING SHEAR, FRONT	9
1	1	1	1	1	1	1	3-1803054-3	ANVIL, COMBINATION	8
	1	-	1	1	1	1	240641-4	SPACER	7
	-	-	-	-	-	-	-	-	6
	-	-	1	1	1	1	1-2119780-4	DEPRESSOR, SHEAR	5
1	1	-	1	1	1	1	238011-2	BLOCK, CRIMPER SPACER	4
1	1	1	1	1	1	1	2-1803019-8	CRIMPER, INSULATION O	3
	-	-	1	1	1	1	455888-4	SPACER, CRIMPER	2
1	-	1	1	1	1	1	4-1633713-6	CRIMPER, WIRE PREMIUM	1
-78	-77	-27	-25	-22	-21	PART NO	DESCRIPTION	ITEM NO	

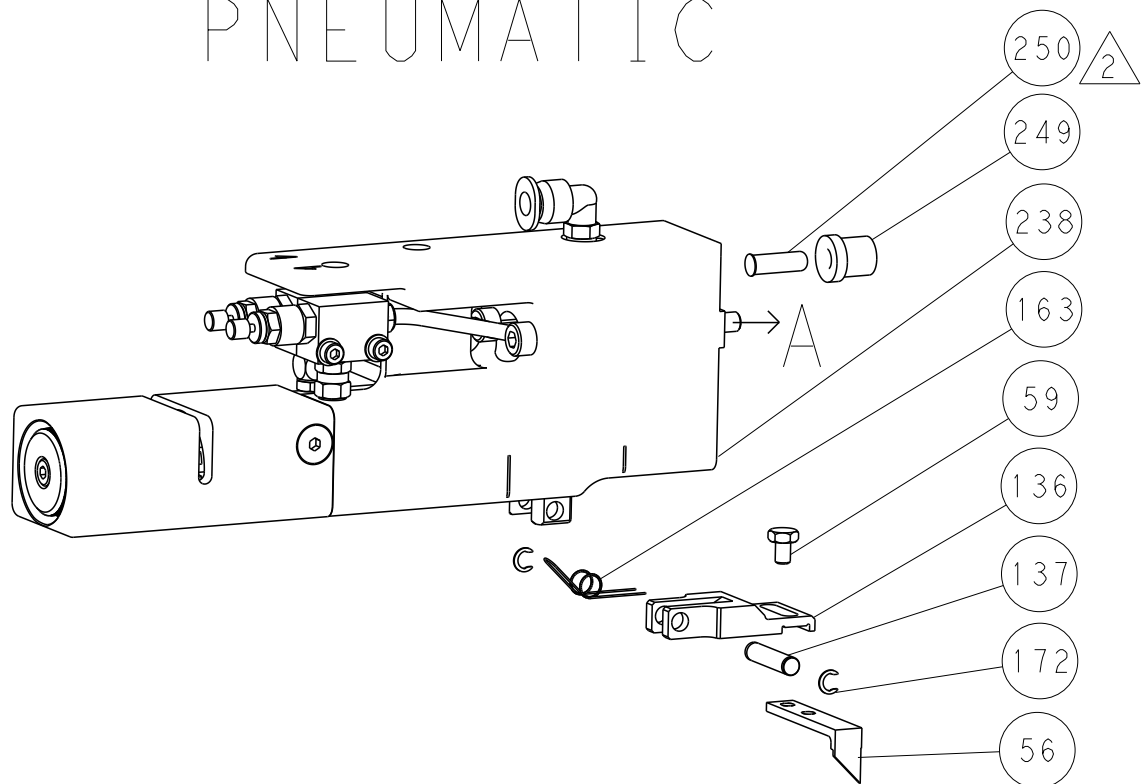
THIS IS SUBJECT TO CHANGE WITHOUT NOTICE. THE CUSTOMER'S ORGANIZATION SHOULD BE CONTACTED FOR THE LATEST REVISION.		OWN R. KNEPPER CHK G. BAILEY APVD M. CLIFFORD	22-Oct-13 22-Oct-13 22-Oct-13	TE Connectivity Harrisburg, PA 17105-3608	
DIMENSIONS: mm	TOLERANCES UNLESS OTHERWISE SPECIFIED: 0 PLC ±.5 1 PLC ±0.13 2 PLC ±0.13 3 PLC ±0.13 4 PLC ±0.0001 FINISH	NAME Ocean Side Feed Applicator	SIZE A1	CAGE CODE 00779	DRAWING NO C=2266126
MATERIAL -	FINISH -	WEIGHT -	Customer Accessible Production Drawing	SCALE 1:2	SHEET 3 OF 4

LOC		DIST		REVISIONS					
A		66		P	LTR	DESCRIPTION	DATE	DWN	APVD
					-	SEE SHEET 1	-	-	-

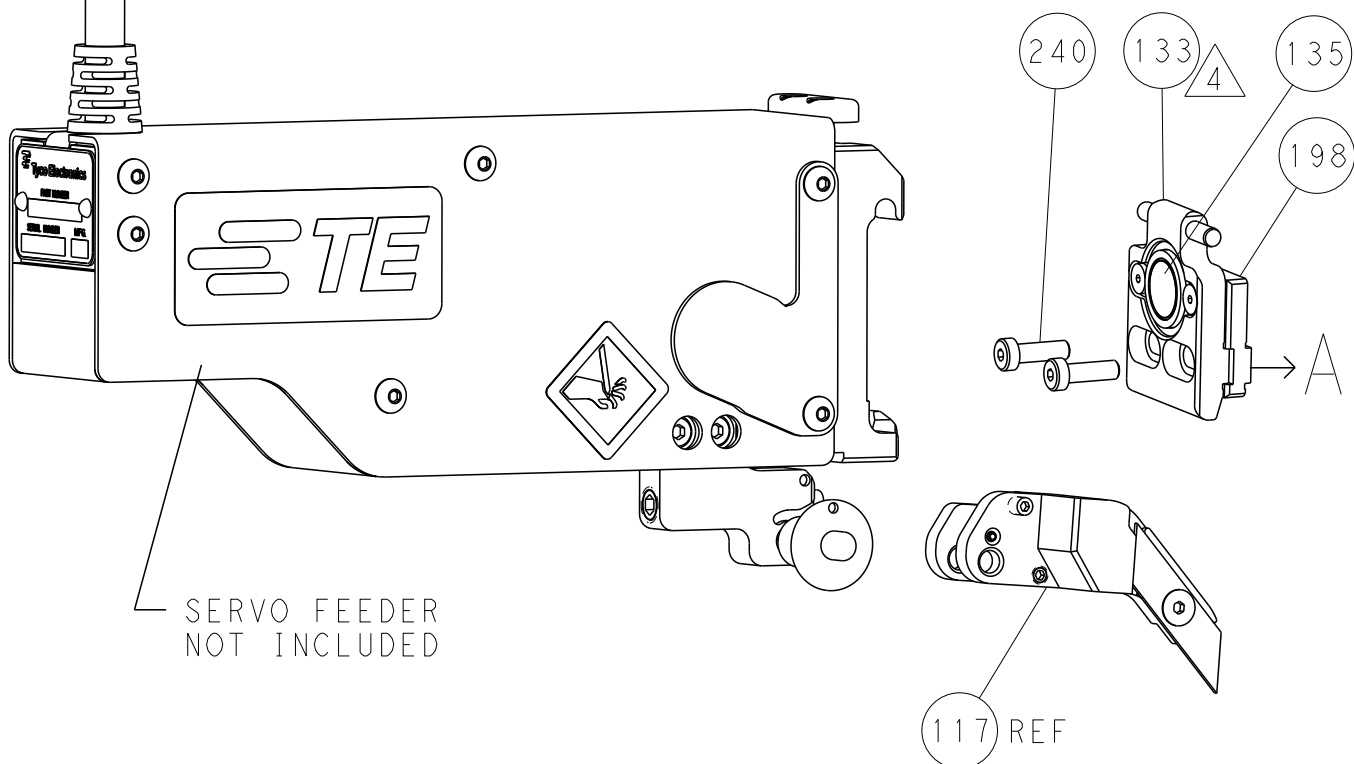
FEED TYPE  
MECHANICAL



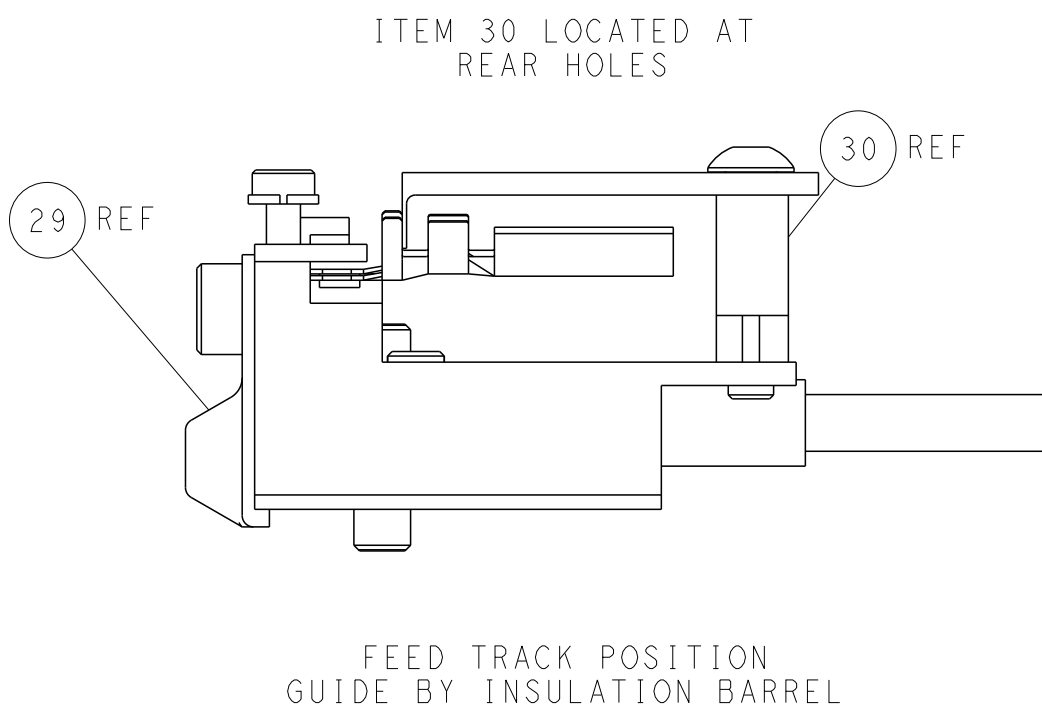
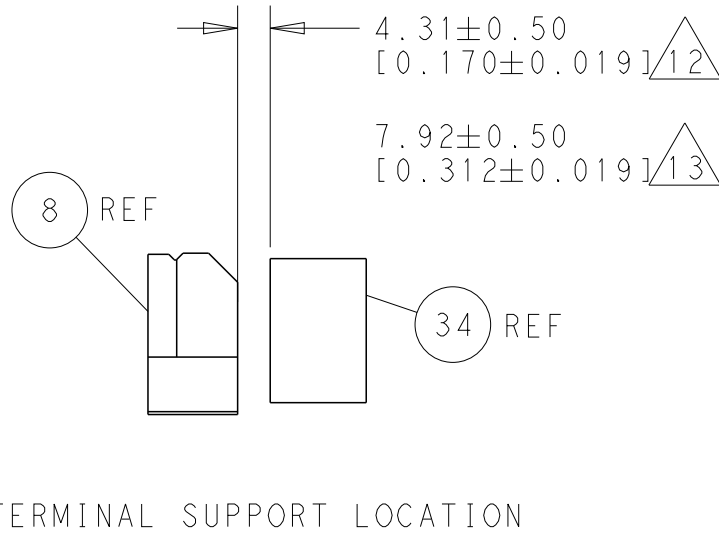
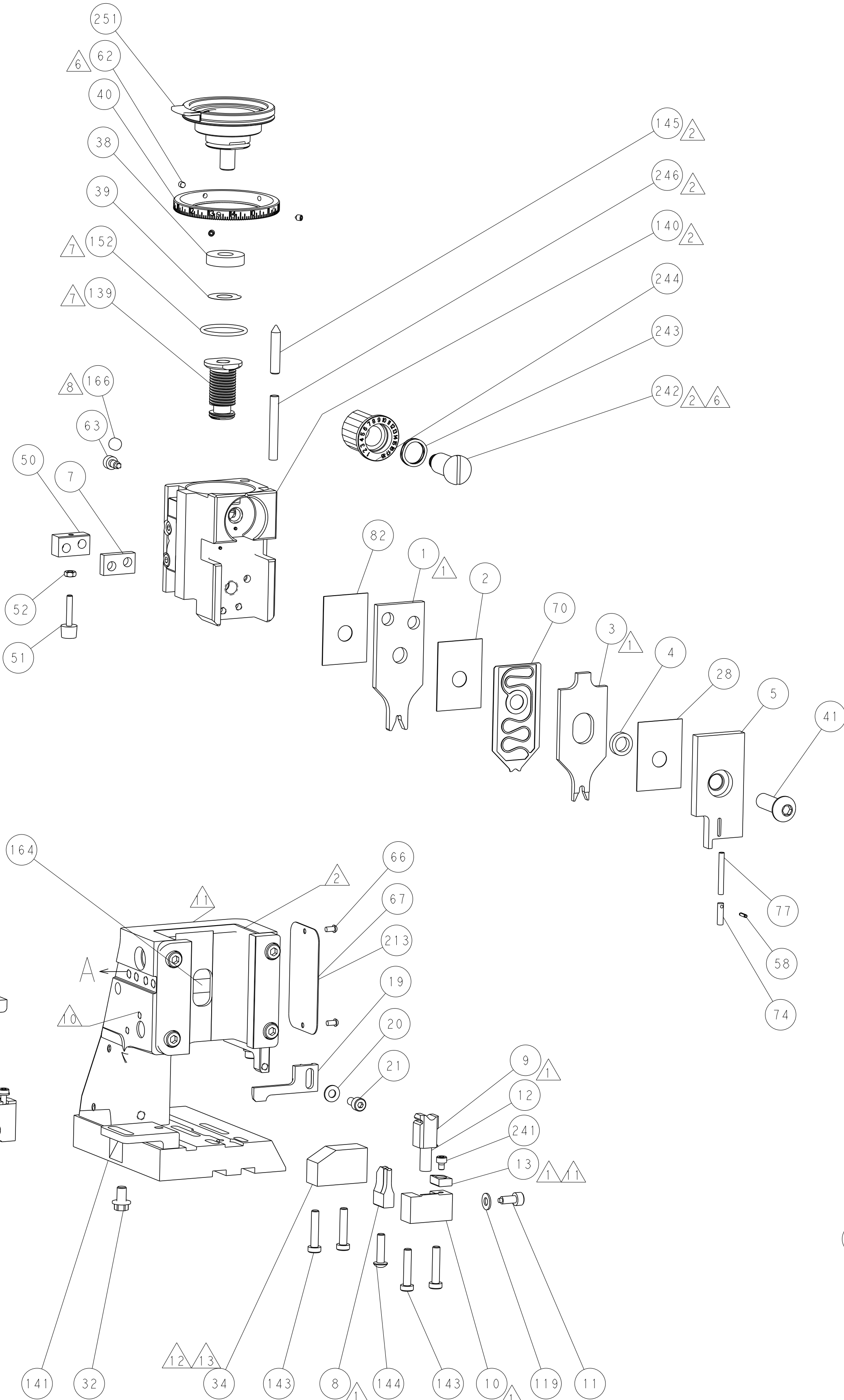
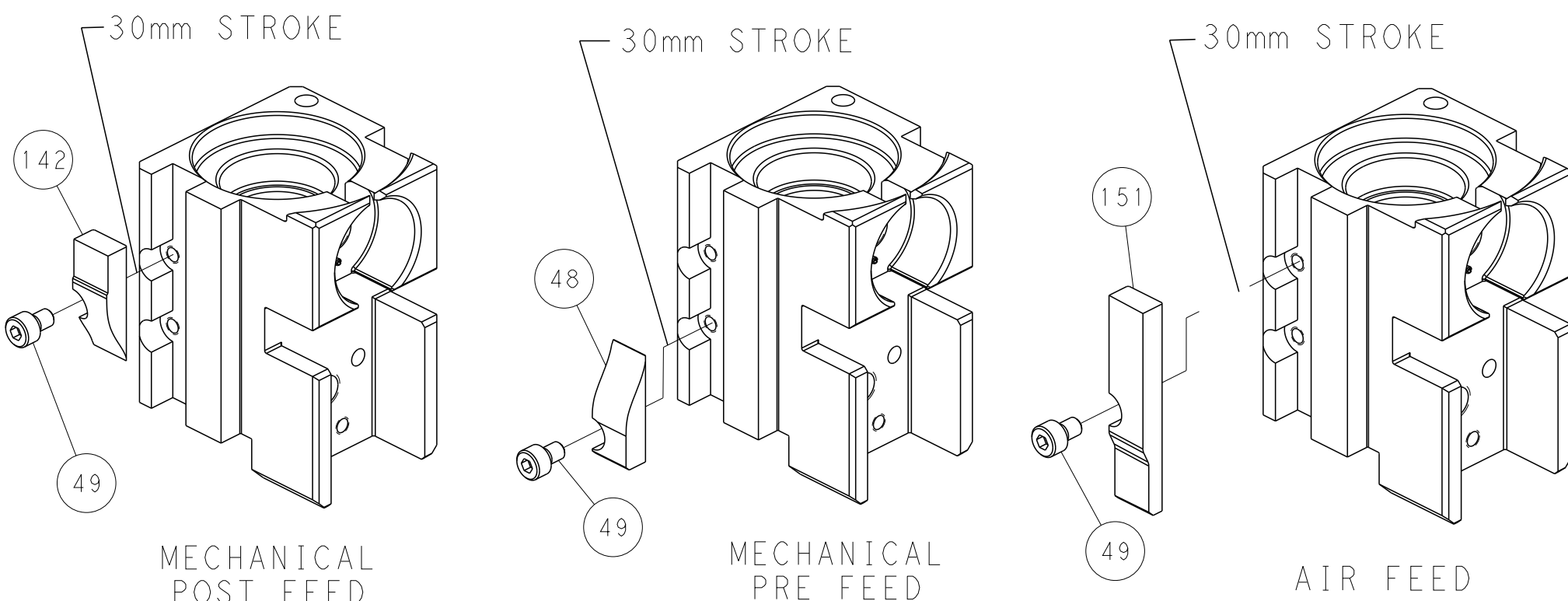
PNEUMATIC



SERVO  
LATCH PLATE



CAM POSITIONS



PACIFIC VERSION  
Shown on sheets 3 of 4 & 4 of 4  
(Atlantic version shown on sheets 1 of 4 & 2 of 4)

THIS DRAWING IS UNPUBLISHED. IT IS SUBJECT TO CHANGE WITHOUT NOTICE. THE USER SHALL BE RESPONSIBLE FOR VERIFYING THE LATEST VERSION OF THIS DRAWING.		DWN R. KNEPPER 22-Oct-13	TE Connectivity Harrisburg, PA 17105-3608	
DIMENSIONS: mm		CHK G. BAILEY 22-Oct-13	NAME Ocean Side Feed Applicator	
TOLERANCES UNLESS OTHERWISE SPECIFIED: 0 PLC ±.5 1 PLC ±0.5 2 PLC ±0.13 3 PLC ±0.013 4 PLC ±0.001 ANGLES FINISH		APVD M. CLIFFORD 22-Oct-13	SIZE A1	
MATERIAL		PRODUCT SPEC	CAGE CODE 00779	
		APPLICATION SPEC	DRAWING NO C=2266126	
		WEIGHT	RESTRICTED TO	
		Customer Accessible Production Drawing	SCALE 1:2	
			SHEET 4 of 4	
			REV A1	