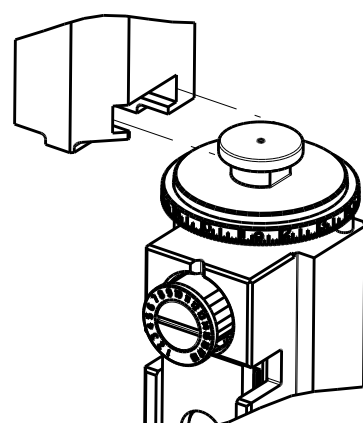





8			7			6			5			4			3		
THIS DRAWING IS UNPUBLISHED.			RELEASED FOR PUBLICATION														
© COPYRIGHT 20			BY TYCO ELECTRONICS CORPORATION. ALL RIGHTS RESERVED.														
ATLANTIC VERSION TERMINATOR INTERFACE ADAPTER		PART NUMBER	REVISION	DESCRIPTION	FEED TYPE	APPLICATOR STYLE CONVERSION CHART											
						CONVERT TO	PART NUMBERS REQUIRED										
	2266124-1	B	FINE CRIMP HEIGHT ADJUST	MECHANICAL	PNEUMATIC FEED	2119950-1	1338685-1	5-18022-5	2119641-1	2119799-1	2063440-1						
					SERVO LATCH PLATE	2119951-1	-	8-2266124-5	1901094-3	-	2168400-6 (QUANTITY 2)						
					SMART APPLICATOR	2161326-1	-	8-2266124-4	-	-	-						
	2266124-2	B	FINE CRIMP HEIGHT ADJUST	PNEUMATIC	MECHANICAL FEED	2119949-1	1338685-1	5-18022-5	2119653-1	-	-						
					SERVO LATCH PLATE	2119951-1	-	8-2266124-5	1901094-3	-	2168400-6 (QUANTITY 2)						
					SMART APPLICATOR	2161326-1	-	8-2266124-4	-	-	-						
	2266124-5	B	FINE CRIMP HEIGHT ADJUST	SERVO LATCH PLATE ⁴	MECHANICAL FEED	2119949-1	1338685-1	5-18022-5	2119653-1	-	-						
					PNEUMATIC FEED	2119950-1	1338685-1	5-18022-5	2119641-1	2119799-1	2063440-1						
	2266124-6	B	NON-CRIMP HEIGHT ADJUST	⁴ SERVO LATCH PLATE ¹²	-	-	-	-	-	-	-						
	2266124-7	B	FINE CRIMP HEIGHT ADJUST	NONE	-	-	-	-	-	-	-						
7-2266124-7	A	CRIMP TOOLING KIT	-	-	-	-	-	-	-	-							
7-2266124-8	A	APPLICATOR CONVERSION KIT	-	⁴	-	-	-	-	-	-							


APPLICATOR DATA		
CRIMP	SIZE	TYPE
WIRE	2.97 mm [.117]	F
INSUL	3.96 mm [.156]	O
APPLICATOR INSTRUCTIONS 408-10389		

15 APPLICATOR CONVERSION KITS	
PART NUMBER	INSULATION DIAMETER RANGE
7-2266124-8	Ø 3.83-4.47mm [.151-.176]
7-2266125-8	Ø 3.30-3.91mm [.130-.154]
7-2266126-8	Ø 2.87-3.43mm [.113-.135]

TERMINAL DATA: DEUTSCH TERMINAL DEUTSCH CRIMP SPECIFICATION			
TERMINAL NAME: STAMPED CONTACT PIN SIZE 12			
WIRE STRIP LENGTH 5.71-6.99 mm [.225-.275 IN]		INSULATION DIAMETER RANGE Ø3.83-4.47 mm [.151-.176 IN]	
TERMINAL APPLICATION SPECIFICATION		0425-208-0000 Rev G	
TE TERMINAL		TE TERMINAL	
1572028-2		1572028-1	
DEUTSCH TERMINAL		DEUTSCH TERMINAL	
1060-12-0144		1060-12-0166	

TERMINAL DATA: DEUTSCH TERMINAL DEUTSCH CRIMP SPECIFICATION			
TERMINAL NAME: STAMPED CONTACT SOCKET SIZE 12			
WIRE STRIP LENGTH 5.71-6.99 mm [.225-.275 IN]		INSULATION DIAMETER RANGE Ø3.83-4.47 mm [.151-.176 IN]	
TERMINAL APPLICATION SPECIFICATION		0425-208-0000 Rev G	
TERMINALS APPLIED			
TE TERMINAL	DEUTSCH TERMINAL	TE TERMINAL	DEUTSCH TERMINAL
286955-2	1062-12-0144	286955-1	1062-12-0166

WIRE SIZE		CRIMP HEIGHT mm [INCH]		CRIMP HEIGHT REFERENCE SETTING
4.00mm2		2.24±0.03/-0.05 [0.88±0.01/-0.02]		5.4
12 AWG		2.03±0.03/-0.05 [0.80±0.01/-0.02]		5.7
3.00mm2		2.03±0.03/-0.05 [0.80±0.01/-0.02]		5.9
2.50mm2		1.88±0.03/-0.05 [0.74±0.01/-0.02]		7.4
14 AWG		1.78±0.03/-0.05 [0.70±0.01/-0.02]		8.2
2.00mm2		1.78±0.03/-0.05 [0.70±0.01/-0.02]		8.4



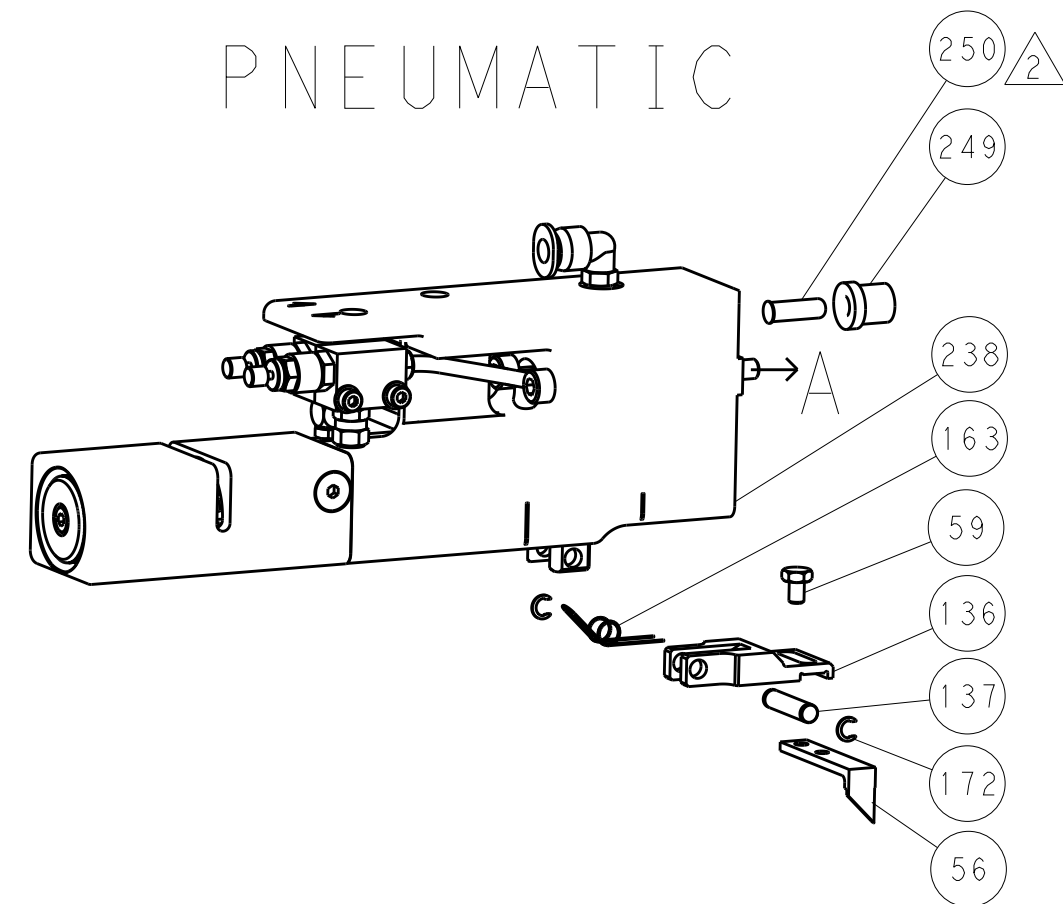
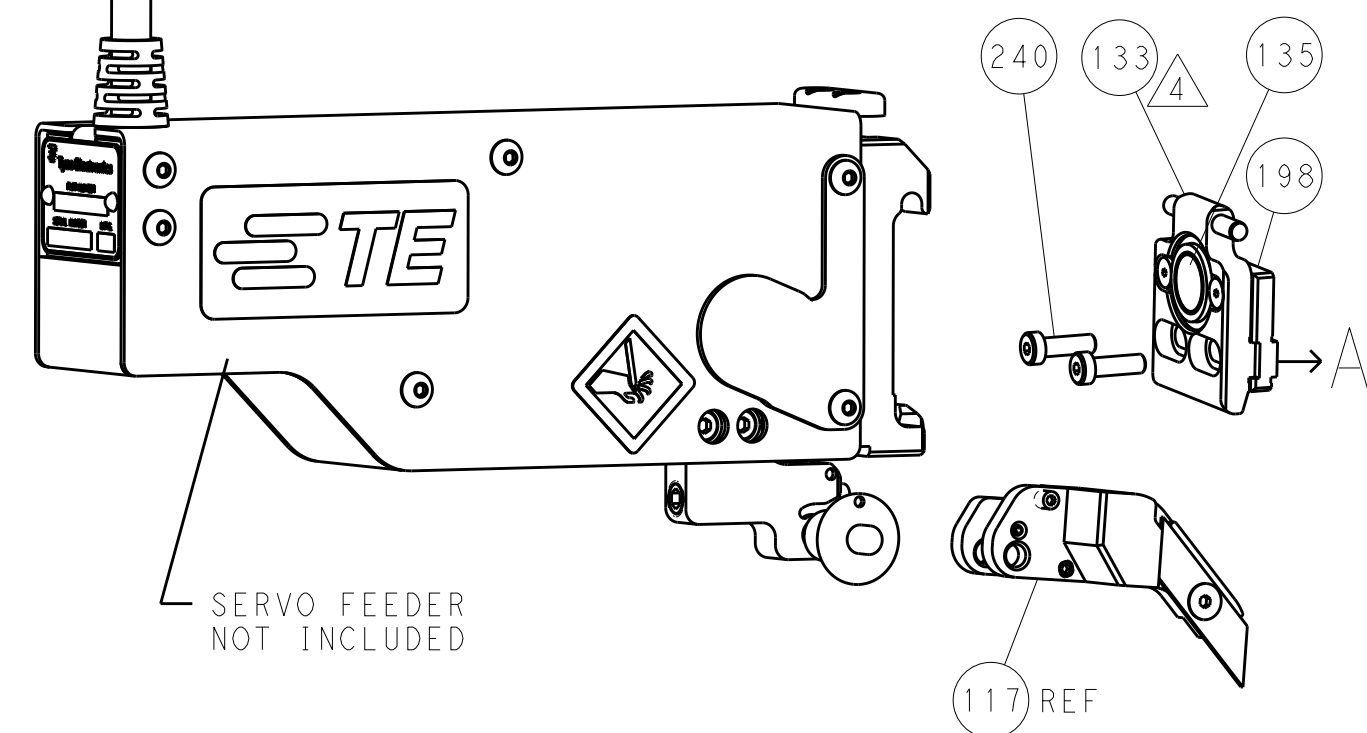
- 1 RECOMMENDED SPARE PARTS
- 2 GREASE BEARING SURFACES LIGHTLY
3. LUBRICATE DAILY PER THE APPLICATOR INSTRUCTION SHEET SUPPLIED WITH THE APPLICATOR.
- 4 APPLICATOR SPECIFIC DATA TO BE ENTERED INTO BLANK MEMORY C ASSEMBLY. SEE BELOW FOR PART NUMBER:
 MECHANICAL FEED WITH "SMART APPLICATOR" CONVERSION: 8-2
 PNEUMATIC FEED WITH "SMART APPLICATOR" CONVERSION: 8-2
 SERVO FEED WITH "FINE CRIMP HEIGHT ADJUST": 8-2
 SERVO FEED WITH "NON-CRIMP HEIGHT ADJUST": 8-2
5. ADJUSTMENT OF THE STRIPPER MAY BE REQUIRED WHEN MOVING THE APPLICATOR BETWEEN BENCH AND LEADMAKER APPLICATIONS.
- 6 APPLY PART NUMBER 1-23419-5 LOCTITE TO THREADS OF ITEMS 62
 APPLY PART NUMBER 2-23419-6 LOCTITE TO THREADS OF ITEMS 24
 FOR -6 ONLY APPLY PART NUMBER 1-23419-5 LOCTITE TO THREADS
- 7 GREASE THREADS, GROOVE AND O-RING ON ITEMS 35 & 252.
- 8 MAGNET, ITEM 166 MUST BE ORIENTED CORRECTLY IN ORDER TO PR
 ACTUATE THE COUNTER.
- 9 CRIMP HEIGHT REFERENCE SETTING WAS THE SETTING USED WHEN T
 APPLICATOR WAS QUALIFIED AT THE FACTORY. ADJUSTMENT MAY BE
 NECESSARY WHEN RUNNING APPLICATOR IN THE FIELD.
- 10 SPARE FEED CAM STORAGE LOCATION REFER TO INSTRUCTION SHEET
 FOR ADDITIONAL INFORMATION.
- 11 TO CONVERT THE APPLICATOR TO A NON-CARRIER CUTTING STYLE,
 REMOVE ITEM 13 AND ATTACH TO THE LOCATION ON THE BACK SIDE
 OF THE HOUSING. REFER TO INSTRUCTION SHEET FOR ADDITIONAL
 INFORMATION.
- 12 WHEN ASSEMBLING A NON CRIMP HEIGHT ADJUST APPLICATOR (-6)
 USE SHIMS FROM ITEM 260 TO ACHIEVE A NOMINAL SHIM HEIGHT OF
- 13 DIMENSION 1.27 ± 0.50 [0.050 \pm 0.019] APPLIES TO PIN TERMINALS
- 14 DIMENSION 7.92 ± 0.50 [0.312 \pm 0.019] APPLIES TO SOCKET TERMINALS
- 15 SEE APPROPRIATE APPLICATOR LOG SHEETS FOR APPLIED TERMINALS

-	-	-	1	-	-	-	2119957-2	APPLICATOR SHIM PACK	260
-	-	1	-	1	1	1	8-21084-0	O-RING, .676 ID, .070 DIA. MAT.	252
-	-	-	-	-	1	-	2119640-1	PUSH ROD, AIR FEED	250
-	-	-	-	-	1	-	2079988-1	BUSHING, LCH5-12, MISUMI	249
-	-	-	-	-	1	-	2119641-1	FEED CAM, AIR FEED	248
-	-	1	-	1	1	1	2119798-1	DETENT PIN	247
-	-	1	-	1	1	1	1-22279-3	SPRING, COMPRESSION	246
-78	-77	-7	-6	-5	-2	-1	PART NO	DESCRIPTION	ITEM NO

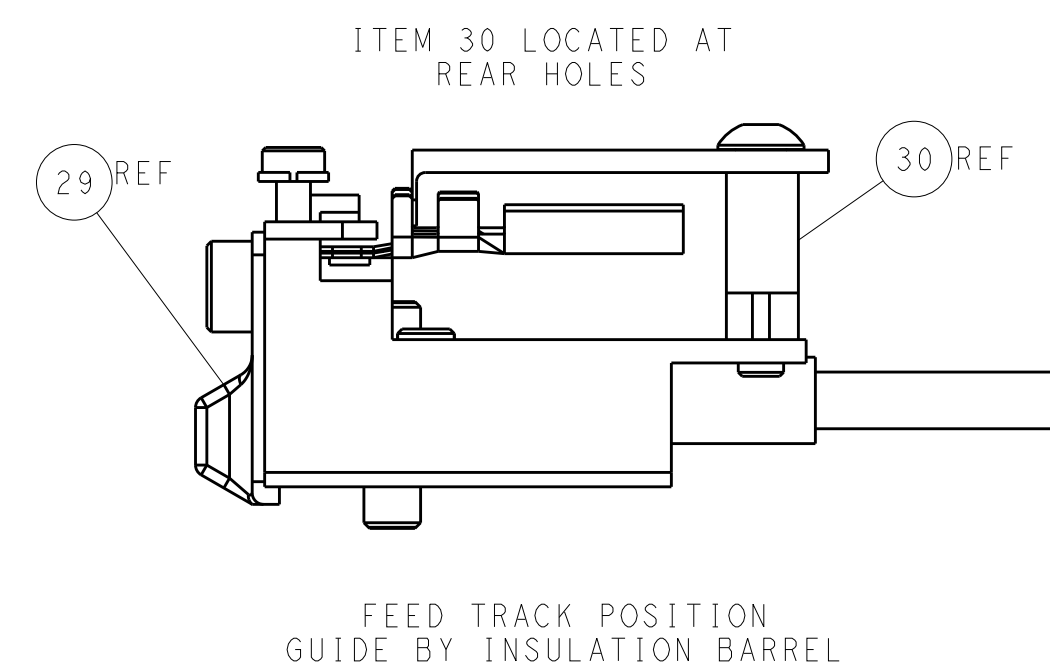
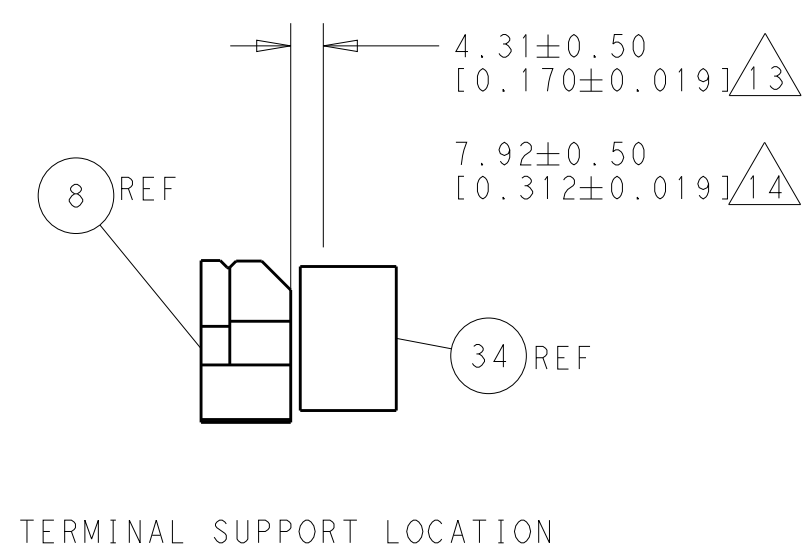
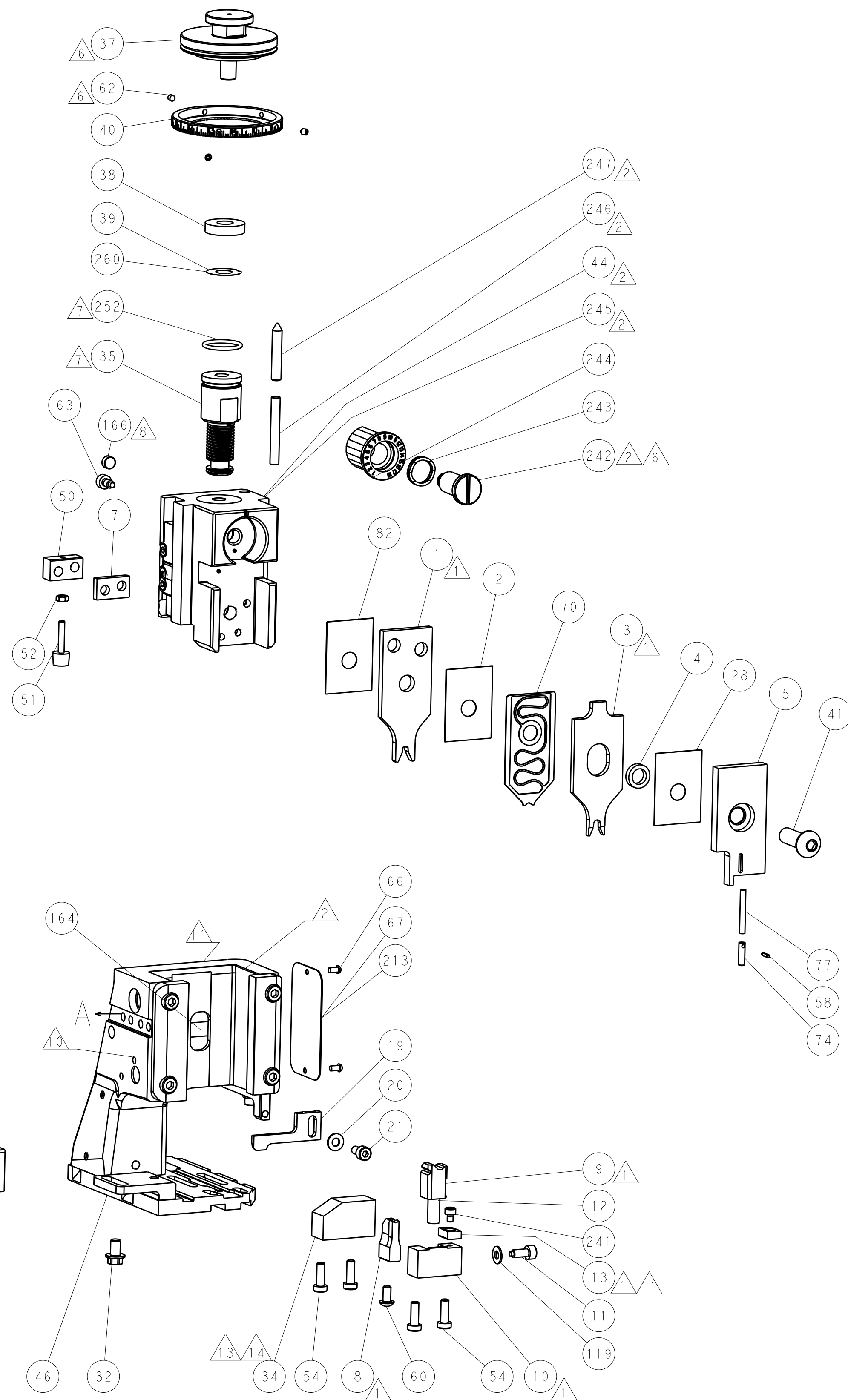
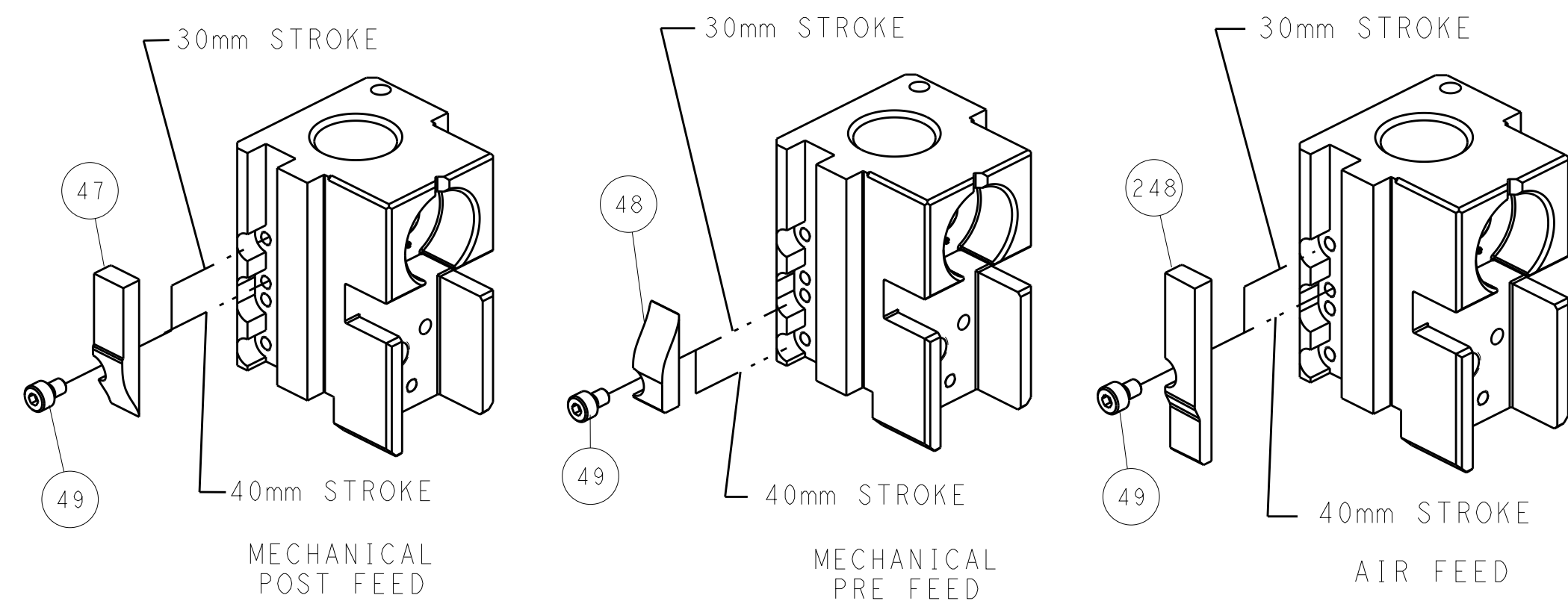
ATLANTIC VERSION
Shown on sheets 1 of 4 & 2 of 4
(Pacific version shown on sheets 3 of 4 & 4 of 4)

		2				1				
SET UP GAUGE 2119599-1		LOC A	DIST 66	REVISIONS						
				REV	LYR	DESCRIPTION	DATE	DWN	APVD	
					A1	ECR-14-008401	04JUN2014	RK	GB	
					B	ECR-14-009302	20JUN2014	JH	TE	
-	-	-	1	-	-	2119758-1	RAM, AMP STYLE, SIDE FEED, NON-ADJ.		245	
-	-	1	1	1	1	2119082-9	CAM, SNAIL, INSULATION ADJUSTMENT		244	
-	-	1	1	1	1	2079764-1	WASHER, WAVE SPRING, CREST-TO-CREST		243	
-	-	1	1	1	1	2119083-1	RETAINER, INSULATION DIAL		242	
-	-	1	1	1	1	7-18023-7	SCR, SKT HD CAP M3 X 4.0		241	
-	-	-	2	2	-	2168400-6	SHCS, LOW HEAD, RoHS, M5 X 16		240	
-	-	-	-	-	1	2119580-1	MECHANICAL FEED ASSEMBLY		239	
-	-	-	-	-	1	2063440-1	AIR FEED MODULE		238	
-	-	-	1	1	-	2119740-2	TAG, IDENTIFICATION		213	
-	-	-	1	1	-	1901094-3	SPACER, FEEDER		198	
-	-	-	-	-	2	21045-3	RING, RETAIN, EXTERN, 3/16 CRESCENT		172	
-	-	1	1	1	1	994969-1	MAGNET, RARE EARTH HIGH ENERGY		166	
-	-	REF	REF	REF	REF	994970-2	COUNTER, MAGNETIC		164	
-	-	-	-	-	1	240638-1	SPRING, FEED FINGER		163	
-	-	-	-	-	1	3-23627-7	PIN, RETAIN, GRVD, 3/16 X .854		137	
-	-	-	-	-	1	2119799-1	HOLDER, FEED FINGER, AF		136	
-	-	-	REF	REF	-	SEE NOTE 4	MEMORY CHIP, PROGRAMMED		135	
-	-	-	1	1	-	1633743-1	SERVO FEED LATCH ASM		133	
-	-	1	1	1	1	1-18028-2	WASHER, FLAT, REG M4		119	
-	-	-	REF	REF	-	2119944-1	FEED FINGER ASSEMBLY, SF		117	
-	-	1	1	1	1	455888-4	SPACER, CRIMPER		82	
-	-	1	1	1	1	5-547505-2	SPRING, COMPRESSION		77	
-	-	1	1	1	1	854769-4	HOLDER, INS		74	
1	-	-	-	-	-	2266124	PRINT, APPLICATOR LOG SHEET		72	
-	-	1	1	1	1	2119956-1	DOCUMENTATION PACKAGE		71	
-	-	1	1	1	1	2119791-9	DEPRESSOR, WIRE		70	
-	-	1	-	-	1	2119740-1	TAG, IDENTIFICATION		67	
-	-	2	2	2	2	2168078-1	SCREW, DRIVE, RH, RoHS, 2 x .188		66	
-	-	1	-	1	1	2119793-1	LIMITER, ADJUSTMENT BOLT		63	
-	-	3	-	3	3	992763-5	SCR, SET, SOC, CONE POINT, M3 x 4.0		62	
-	-	1	1	1	1	2079383-4	SCR, BHSC, RoHS (M4 X 8)		60	
-	-	-	-	-	1	5-18022-5	SCR, HEX HD CAP, M4 X 6.0		59	
-	-	1	1	1	1	21028-2	PIN, SLOTTED SPRING .062 X .250		58	
-	-	-	-	-	1	1338685-1	PAWL, FEED		56	
-	-	4	4	4	4	2168400-1	SHCS, LOW HEAD, RoHS, M4 X 12		54	
2	-	2	2	2	2	2168083-3	SCR, SKT HD CAP, RoHS, M4 X 12.0		53	
-	-	1	1	1	1	5018030-1	NUT, HEX, REG, RoHS, M3		52	
-	-	1	1	1	1	811242-5	BUMPER, HOLD DOWN		51	
-	-	1	1	1	1	690753-2	SPACER, TONKER		50	
-	-	-	-	-	1	18023-9	SCR, SKT HD CAP M4 X 6.0		49	
-	-	-	-	-	1	2119652-1	FEED CAM, PRE FEED		48	
-	-	-	-	-	1	2119653-1	FEED CAM, POST FEED		47	
-	-	1	1	1	1	2119656-9	APPLICATOR BASIC ASSEMBLY, SF		46	
-	-	1	-	1	1	2119370-1	RAM, AMP STYLE, SIDE FEED		44	
-	-	1	1	1	1	2079383-7	SCR, BHSC, RoHS (M8 X 25)		41	
-	-	1	-	1	1	2119645-1	DISC, NUMBERED FA WIRE ADJUSTMENT		40	
-	-	1	-	1	1	2119957-1	APPLICATOR SHIM PACK		39	
1	-	1	1	1	1	1-2119644-3	RAM WASHER, PRECISION		38	
-	-	1	1	1	1	2119085-1	FA HEAD, ATLANTIC STYLE		37	
-	-	1	-	1	1	2119092-1	BOLT, ADJUSTMENT		35	
-	-	1	1	1	1	1752356-6	SUPPORT, TERMINAL		34	
-	-	2	2	2	2	2079383-5	SCR, BHSC, RoHS (M4 X 20)		33	
-	-	1	1	1	1	2161328-1	HEX HEAD, FLANGED, M5 x 8mm LONG		32	
-	-	1	1	1	1	1-1320908-0	SPACER, STRIP GUIDE		30	
-	-	1	1	1	1	2119959-1	ASSEMBLY, STRIP GUIDE		29	
-	-	1	1	1	1	455888-3	SPACER, CRIMPER		28	
-	-	1	1	1	1	1320928-6	STRIP GUIDE		24	
-	-	1	1	1	1	2168083-2	SCR, SKT HD CAP, RoHS, M4 X 8.0		21	
-	-	1	1	1	1	1-18028-2	WASHER, FLAT, REG M4		20	
-	-	1	1	1	1	2119533-1	STRIPPER, SIDE FEED		19	
-	-	1	1	1	1	2119806-1	INSERT, SHEAR		13	
-	-	1	1	1	1	3-22280-3	SPRING, COMPRESSION		12	
-	-	1	1	1	1	1-356885-4	STOP, SHEAR		11	
-	-	1	1	1	1	2119805-1	SHEAR HOLDER, FRONT		10	
-	-	1	1	1	1	1803095-1	FLOATING SHEAR, FRONT		9	
1	1	1	1	1	1	3-1803054-1	ANVIL, COMBINATION		8	
1	-	1	1	1	1	4-240641-6	SPACER		7	
-	-	-	-	-	-	-	-		6	
-	-	1	1	1	1	1-2119780-4	DEPRESSOR, SHEAR		5	
1	-	1	1	1	1	238011-2	BLOCK, CRIMPER SPACER		4	
1	1	1	1	1	1	2-1803019-6	CRIMPER, INSULATION O		3	
-	-	1	1	1	1	455888-4	SPACER, CRIMPER		2	
-	1	1	1	1	1	4-1633713-6	CRIMPER, WIRE PREMIUM		1	
-78	-77	-7	-6	-5	-2	-1	PART NO	DESCRIPTION	ITEM NO	
THIS DRAWING IS A CONTROLLED DOCUMENT FOR TWO ELECTRONICS CORPORATION IT IS SUBJECT TO CHANGE AND NO CONTROLING OR RELEVANT ORGANIZATION SHOULD BE CONTACTED FOR THE LATEST REVISION.							DWN R. KNEPPER 21-Oct-13	TE Connectivity Harrisburg, PA 17105-3608		
DIMENSIONS: mm		TOLERANCES UNLESS OTHERWISE SPECIFIED:		APVD M. CLIFFORD 21-Oct-13		NAME Ocean Side Feed Applicator		RESTRICTED TO		
		0 PLC ±.0 1 PLC ±.0,5 2 PLC ±0.13 3 PLC ±0.013 4 PLC ±0.001 ANGLES		PRODUCT SPEC		SIZE A1		CAGE CODE 00779		
MATERIAL		FINISH		WEIGHT		DRAWING NO C=2266124		SHEET 1 OF 4		
Customer Accessible Production Drawing							SCALE 1:2		REV B	


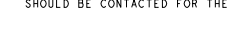
PNEUMATIC

SERVO
LATCH PLATE

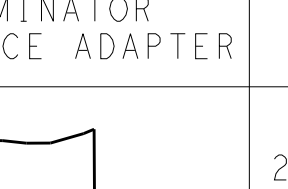


CAM POSITIONS

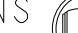



ATLANTIC VERSION
Shown on sheets 1 of 4 & 2 of 4
(Pacific version shown on sheets 3 of 4 & 4 of 4)

<small>THIS DRAWING IS THE PROPERTY OF THE COMPANY AND IS NOT TO BE REPRODUCED OR COPIED IN ANY MANNER WITHOUT THE WRITTEN PERMISSION OF THE COMPANY. IT IS TO BE USED FOR THE PROJECT AND SPECIFICATIONS SHOWN HEREON. IT IS TO BE RETURNED TO THE COMPANY WHEN NO LONGER REQUIRED. IT SHOULD BE CONTACTED FOR THE LATEST REVISION.</small>		<small>OWN</small> R. KNEPPER 21-Oct-13 <small>CHK</small> G. BAILEY 21-Oct-13 <small>APP'D</small> W. CLIFFORD 21-Oct-13		 TE Connectivity Harrisburg, PA 17105-3608	
<small>DIMENSIONS:</small> mm		<small>TOLERANCES UNLESS OTHERWISE SPECIFIED:</small> 0 PLC ±.0 1 PLC ±0.5 2 PLC ±0.13 3 PLC ±0.013 4 PLC ±0.001 ANGLES		<small>NAME</small> Ocean Side Feed Applicator -	
		<small>PRODUCT SPEC</small> - <small>APPLICATION SPEC</small> -		<small>SIZE</small> A <small>CAGE CODE</small> 00779 <small>DRAWING NO</small> C-2266124 <small>RESTRICTED TO</small> -	
<small>MATERIAL</small> -		<small>FINISH</small> -		<small>WEIGHT</small> - <small>CUSTOMER ACCESSIBLE PRODUCTION DRAWING</small> -	
				<small>SCALE</small> 1:2 <small>SHEET</small> 2 of 4 <small>REV</small> R	

8		7	
THIS DRAWING IS UNPUBLISHED.		RELEASED FOR PUBLICATION	
20		20	
© COPYRIGHT 20 BY TYCO ELECTRONICS CORPORATION. ALL RIGHTS RESERVED.			





PACIFIC VERSION TERMINATOR INTERFACE ADAPTER	PART NUMBER	REVISION	DESCRIPTION	FEED TYPE
	2-2266124-1	B	FINE CRIMP HEIGHT ADJUST	MECHANICAL
	2-2266124-2	B	FINE CRIMP HEIGHT ADJUST	PNEUMATIC
	2-2266124-5	B	FINE CRIMP HEIGHT ADJUST	SERVO LATCH PLATE 
	2-2266124-7	B	FINE CRIMP HEIGHT ADJUST	NONE
	7-2266124-7	A	CRIMP TOOLING KIT	-
	7-2266124-8	A	APPLICATOR CONVERSION KIT	- 

APPLICATOR DATA		
CRIMP	SIZE	TYPE
WIRE	2.97 mm [.117]	F
INSUL	3.96 mm [.156]	O
APPLICATOR INSTRUCTIONS 408-10389		

 APPLICATOR CONVERSION KITS	
PART NUMBER	INSULATION DIAMETER RANGE
7-2266124-8	Ø 3.83-4.47mm [.151-.176]
7-2266125-8	Ø 3.30-3.91mm [.130-.154]
7-2266126-8	Ø 2.87-3.43mm [.113-.135]

TERMINAL DATA: DEUTSCH TERMINAL DEUTSCH CRIMP SPECIFICATION			
TERMINAL NAME: STAMPED CONTACT PIN SIZE 12			
WIRE STRIP LENGTH 5.71-6.99 mm [.225-.275 IN]		INSULATION DIAMETER RANGE Ø3.83-4.47 mm [.151-.176 IN]	
TERMINAL APPLICATION SPECIFICATION		0425-208-0000 Rev G	
TERMINALS APPLIED			
TE TERMINAL	DEUTSCH TERMINAL	TE TERMINAL	DEUTSCH TERMINAL
1572028-2	1060-12-0144	1572028-1	1060-12-0166

TERMINAL DATA: DEUTSCH TERMINAL DEUTSCH CRIMP SPECIFICATION			
TERMINAL NAME: STAMPED CONTACT SOCKET SIZE 12			
WIRE STRIP LENGTH 5.71-6.99 mm [.225-.275 IN]		INSULATION DIAMETER RANGE Ø3.83-4.47 mm [.151-.176 IN]	
TERMINAL APPLICATION SPECIFICATION		0425-208-0000 Rev G	
TE TERMINAL		DEUTSCH TERMINAL	
286955-2		1062-12-0144	
TE TERMINAL		DEUTSCH TERMINAL	
286955-1		1062-12-0166	

WIRE SIZE			CRIMP HEIGHT mm [INCH]		CRIMP HEIGHT REFERENCE SETTING	
4.00mm2			2.24+0.03/-0.05 [0.088+0.001/-0.002]		5.4	
12 AWG			2.03+0.03/-0.05 [0.080+0.001/-0.002]		5.7	
3.00mm2			2.03+0.03/-0.05 [0.080+0.001/-0.002]		5.9	
2.50mm2			1.88+0.03/-0.05 [0.074+0.001/-0.002]		7.4	
14 AWG			1.78+0.03/-0.05 [0.070+0.001/-0.002]		8.2	
2.00mm2			1.78+0.03/-0.05 [0.070+0.001/-0.002]		8.4	



-  RECOMMENDED SPARE PARTS

- 2 GREASE BEARING SURFACES LIGHTLY

3. LUBRICATE DAILY PER THE APPLICATOR INSTRUCTION SHEET SUPPLIED WITH THE APPLICATOR.

- 4) APPLICATOR SPECIFIC DATA TO BE ENTERED INTO BLANK MEMORY CHIP AT ASSEMBLY. SEE BELOW FOR PART NUMBER:
MECHANICAL FEED WITH "SMART APPLICATOR" CONVERSION: 8-2266124-4
PNEUMATIC FEED WITH "SMART APPLICATOR" CONVERSION: 8-2266124-4
SERVO FEED WITH "FINE CRIMP HEIGHT ADJUST": 8-2266124-5

5. ADJUSTMENT OF THE STRIPPER MAY BE REQUIRED WHEN MOVING THE APPLICATOR BETWEEN BENCH AND LEADMAKER APPLICATIONS.

- 6 APPLY PART NUMBER 1-23419-5 LOCTITE TO THREADS OF ITEMS 62.
APPLY PART NUMBER 2-23419-6 LOCTITE TO THREADS OF ITEMS 242.

- 7 GREASE THREADS, GROOVE AND O-RING ON ITEMS 139 & 152.

- 8 MAGNET MUST BE ORIENTED CORRECTLY IN ORDER TO PROPERLY ACTUATE THE COUNTER.

- 9 CRIMP HEIGHT REFERENCE SETTING WAS THE SETTING USED WHEN THE APPLICATOR WAS QUALIFIED AT THE FACTORY. ADJUSTMENT MAY BE NECESSARY WHEN RUNNING APPLICATOR IN THE FIELD.

- 10 SPARE FEED CAM STORAGE LOCATION REFER TO INSTRUCTION SHEET
FOR ADDITIONAL INFORMATION.

- ⚠ TO CONVERT THE APPLICATOR TO A NON-CARRIER CUTTING STYLE, REMOVE ITEM 13 AND ATTACH TO THE LOCATION ON BACK SIDE OF THE HOUSING. REFER TO INSTRUCTION SHEET FOR ADDITIONAL INFORMATION.

- DIMENSION 1.27 ± 0.50 [0.050 ± 0.019] APPLIES TO PIN TERMINALS 1060-12-01XX.

- 13 DIMENSION 7.92±0.50 [0.312±0.019] APPLIES TO SOCKET TERMINALS 1062-12-01XX.

- 14 SEE APPROPRIATE APPLICATOR LOG SHEETS FOR APPLIED TERMINALS, WIRE RANGE AND MEMORY CHIP.

-	-	1	1	1	1	2119782-1	FINE ADJUST HEAD ASM, PACIFIC STYLE	251
-	-	-	-	1	-	2119640-1	PUSH ROD, AIR FEED	250
-	-	-	-	1	-	2079988-1	BUSHING, LCH5-12, MISUMI	249
-	-	1	1	1	1	1-22279-3	SPRING, COMPRESSION	246
-	-	1	1	1	1	2119082-9	CAM, SNAIL, INSULATION ADJUSTMENT	244
-78	-77	-27	-25	-22	-21	PART NO	DESCRIPTION	ITEM NO



PACIFIC VERSION

Shown on sheets 3 of 4 & 4 of 4

(Atlantic version shown on sheets 1 of 4 & 2 of 4)

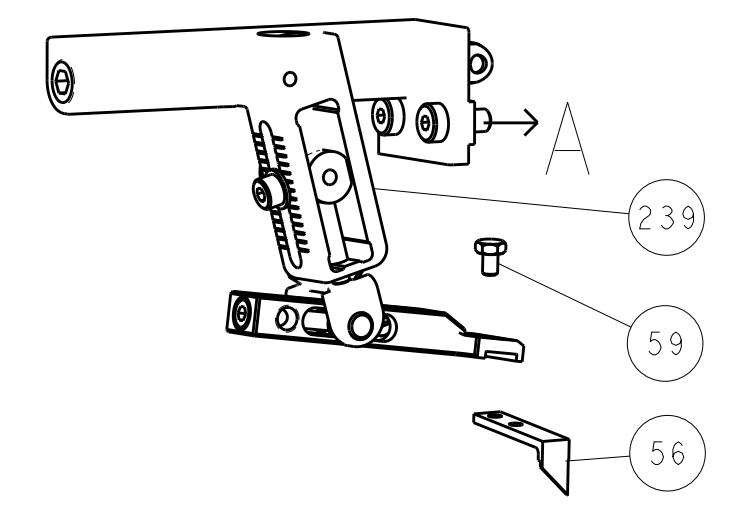
		2		I					
SET UP GAUGE 2119599-1		LOC A	DIST 66	REVISIONS					
P	LTR	DESCRIPTION			DATE	DWN	APVD		
-	-	SEE SHEET I			-	-	-		

6	-	-	1	1	1	1	2079764-1	WASHER, WAVE SPRING, CREST-TO-CREST	243
	-	-	1	1	1	1	2119083-1	RETAINER, INSULATION DIAL	242
	-	-	1	1	1	1	7-18023-7	SCR, SKT HD CAP M3 X 4.0	241
	-	-	-	2	-	-	2168400-6	SHCS, LOW HEAD, RoHS, M5 X 16	240
	-	-	-	-	-	1	2119580-1	MECHANICAL FEED ASSEMBLY	239
	-	-	-	-	1	-	2063440-1	AIR FEED MODULE	238
	-	-	-	1	-	-	2119740-2	TAG, IDENTIFICATION	213
	-	-	-	1	-	-	1901094-3	SPACER, FEEDER	198
	-	-	-	-	2	-	21045-3	RING, RETAIN, EXTERN, 3/16 CRESCENT	172
	-	-	1	1	1	1	994969-1	MAGNET, RARE EARTH HIGH ENERGY	166
	-	-	REF	REF	REF	REF	994970-2	COUNTER, MAGNETIC	164
	-	-	-	-	1	-	240638-1	SPRING, FEED FINGER	163
	-	-	1	1	1	1	8-21084-1	O-RING, .801 ID, .070 DIA. MAT.	152
	-	-	-	-	1	-	2119641-2	FEED CAM, AIR FEED	151
	-	-	1	1	1	1	2119798-2	DETENT PIN	145
	-	-	1	1	1	1	2079383-8	SCR, BHSC, RoHS (M4 X 16)	144
	-	-	4	4	4	4	2168400-5	SHCS, LOW HEAD, RoHS, M4 X 20	143
	-	-	-	-	-	1	2119653-2	FEED CAM, POST FEED	142
	-	-	1	1	1	1	1-2119656-0	APPLICATOR BASIC ASSEMBLY, SF	141
	-	-	1	1	1	1	2119650-1	RAM, ASIAN STYLE, SIDE FEED	140
	-	-	1	1	1	1	2119092-2	BOLT, ADJUSTMENT	139
	-	-	-	-	1	-	3-23627-7	PIN, RETAIN, GRVD, 3/16 X .854	137
	-	-	-	-	1	-	2119799-1	HOLDER, FEED FINGER, AF	136
	-	-	-	REF	-	-	SEE NOTE 4	MEMORY CHIP, PROGRAMMED	135
	-	-	-	1	-	-	1633743-1	SERVO FEED LATCH ASM	133
	-	-	1	1	1	1	1-18028-2	WASHER, FLAT, REG M4	119
	-	-	-	REF	-	-	2119944-1	FEED FINGER ASSEMBLY, SF	117
	-	-	1	1	1	1	455888-4	SPACER, CRIMPER	82
	-	-	1	1	1	1	5-547505-2	SPRING, COMPRESSION	77
	-	-	1	1	1	1	854769-4	HOLDER, INS	74
	1	-	-	-	-	-	2266124	PRINT, APPLICATOR LOG SHEET	72
	-	-	1	1	1	1	2119956-1	DOCUMENTATION PACKAGE	71
	-	-	1	1	1	1	2119791-9	DEPRESSOR, WIRE	70
	-	-	1	-	1	1	2119740-1	TAG, IDENTIFICATION	67
	-	-	2	2	2	2	2168078-1	SCREW, DRIVE, RH, RoHS, 2 x .188	66
	-	-	1	1	1	1	2119793-1	LIMITER, ADJUSTMENT BOLT	63
6	-	-	3	3	3	3	992763-5	SCR, SET, SOC, CONE POINT, M3 x 4.0	62
	-	-	-	-	1	1	5-18022-5	SCR, HEX HD CAP, M4 X 6.0	59
	-	-	1	1	1	1	21028-2	PIN, SLOTTED SPRING .062 X .250	58
	-	-	-	-	1	1	1338685-1	PAWL, FEED	56
	2	-	2	2	2	2	2168083-3	SCR, SKT HD CAP, RoHS, M4 X 12.0	53
	-	-	1	1	1	1	5018030-1	NUT, HEX, REG, RoHS, M3	52
	-	-	1	1	1	1	811242-5	BUMPER, HOLD DOWN	51
	-	-	1	1	1	1	690753-2	SPACER, TONKER	50
	-	-	-	-	1	2	18023-9	SCR, SKT HD CAP M4 X 6.0	49
	-	-	-	-	-	1	2119652-1	FEED CAM, PRE FEED	48
	-	-	1	1	1	1	2079383-7	SCR, BHSC, RoHS (M8 X 25)	41
	-	-	1	1	1	1	2119645-1	DISC, NUMBERED FA WIRE ADJUSTMENT	40
	-	-	1	1	1	1	2119957-1	APPLICATOR SHIM PACK	39
3	1	-	1	1	1	1	1-2119644-3	RAM WASHER, PRECISION	38
	-	-	1	1	1	1	1752356-6	SUPPORT, TERMINAL	34
	-	-	2	2	2	2	2079383-5	SCR, BHSC, RoHS (M4 X 20)	33
	-	-	1	1	1	1	2161328-1	HEX HEAD, FLANGED, M5 x 8mm LONG	32
	-	-	1	1	1	1	1-1320908-0	SPACER, STRIP GUIDE	30
	-	-	1	1	1	1	2119959-1	ASSEMBLY, STRIP GUIDE	29
	-	-	1	1	1	1	455888-3	SPACER, CRIMPER	28
	-	-	1	1	1	1	1320928-6	STRIP GUIDE	24
	-	-	1	1	1	1	2168083-2	SCR, SKT HD CAP, RoHS, M4 X 8.0	21
	-	-	1	1	1	1	1-18028-2	WASHER, FLAT, REG M4	20
	-	-	1	1	1	1	2119533-1	STRIPPER, SIDE FEED	19
1	-	-	1	1	1	1	2119806-1	INSERT, SHEAR	13
	-	-	1	1	1	1	3-22280-3	SPRING, COMPRESSION	12
	-	-	1	1	1	1	1-356885-4	STOP, SHEAR	11
1	-	-	1	1	1	1	2119805-1	SHEAR HOLDER, FRONT	10
1	-	-	1	1	1	1	1803095-1	FLOATING SHEAR, FRONT	9
1	1	1	1	1	1	1	3-1803054-1	ANVIL, COMBINATION	8
	1	-	1	1	1	1	4-240641-6	SPACER	7
	-	-	-	-	-	-	-	-	6
	-	-	1	1	1	1	1-2119780-4	DEPRESSOR, SHEAR	5
1	1	-	1	1	1	1	238011-2	BLOCK, CRIMPER SPACER	4
	1	1	1	1	1	1	2-1803019-6	CRIMPER, INSULATION O	3
	-	-	1	1	1	1	455888-4	SPACER, CRIMPER	2
1	-	1	1	1	1	1	4-1633713-6	CRIMPER, WIRE PREMIUM	1
	-78	-77	-27	-25	-22	-21	PART NO	DESCRIPTION	ITEM NO

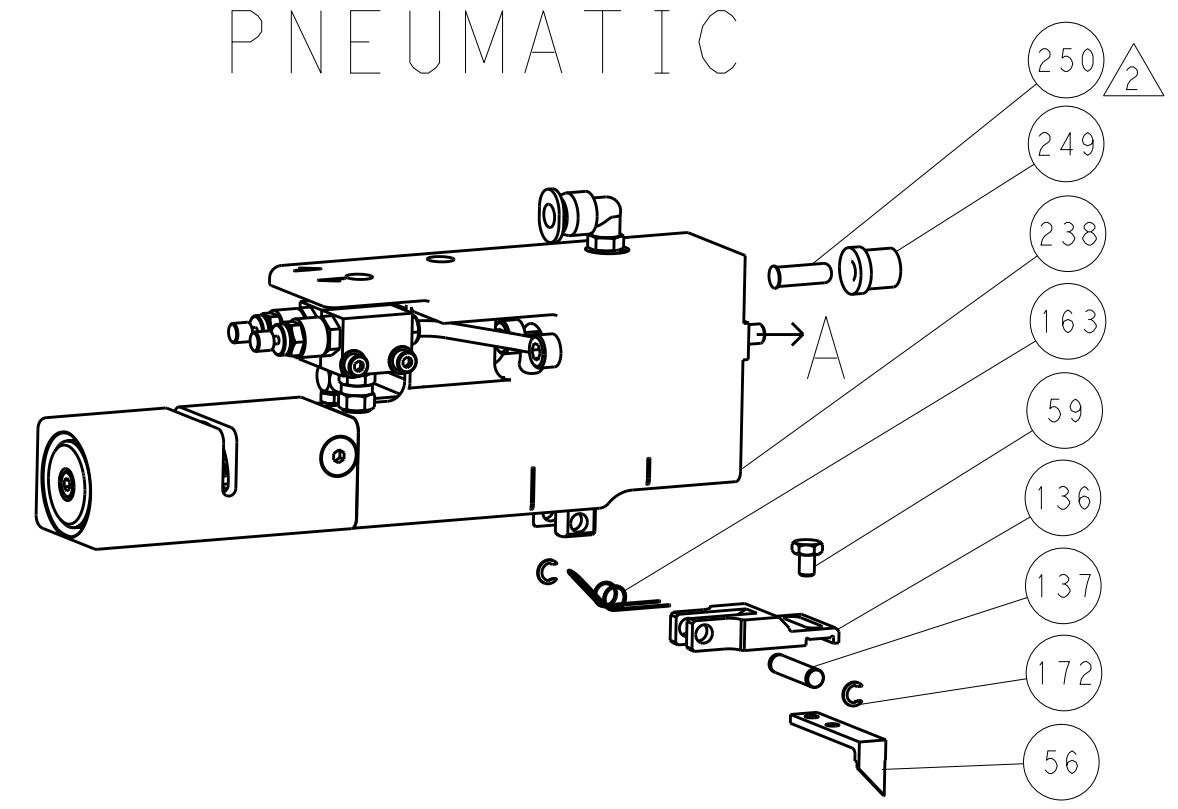
<small>THIS DRAWING IS A COMPLETE DOCUMENT FOR THE ELECTRICAL CONNECTION OF THE PRODUCT TO THE SYSTEM. IT IS THE USER'S RESPONSIBILITY TO OBTAIN THE LATEST VERSION.</small>									
DIMENSIONS: mm		TOLERANCES, UNLESS OTHERWISE SPECIFIED: 0 PLC ± 1 PLC ±0.5 2 PLC ±0.13 3 PLC ±0.013 4 PLC ±0.001 ANGLES ±°		DWN: KNEPPER 21-Oct-13 CHG: G.BAILEY 21-Oct-13 APPR: M.CLIFFORD 21-Oct-13		 TE Connectivity Harrisburg, PA 17105-3608			
		PRODUCT SPEC - APPLICATION SPEC -		NAME: Ocean Side Feed Applicator -		SIZE CASE CODE DRAWING NO. A 00779 C=2266124			
MATERIAL: - FINISH: -		WEIGHT: -		RESTRICTED TO: -		SCALE: 1:2 SHEET 3 OF 4 REV B			
Customer Accessible Product Drawing									

LOC		DIST		REVISIONS			
A	66	P	LTR	DESCRIPTION	DATE	DWN	APVD
		-		SEE SHEET 1	-	-	-

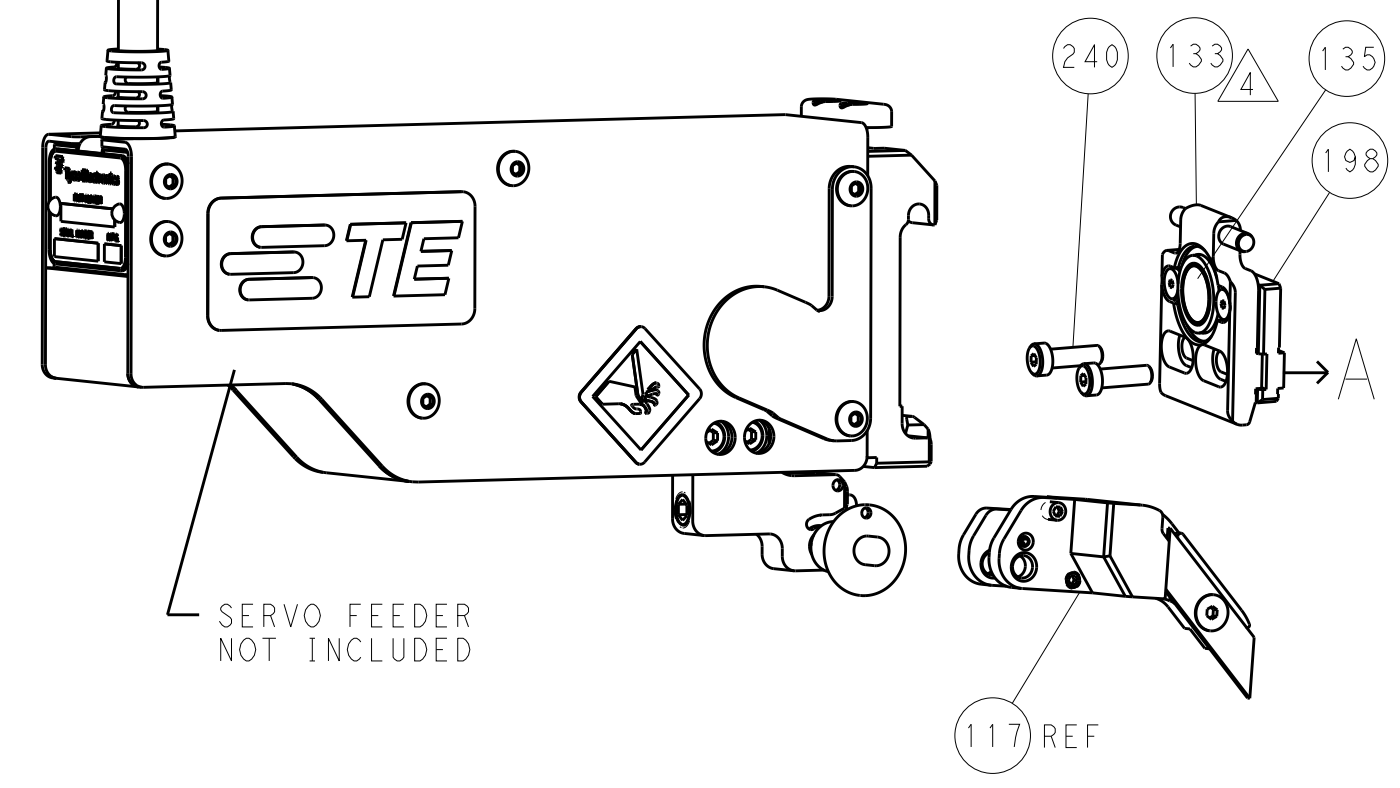
FEED TYPE MECHANICAL



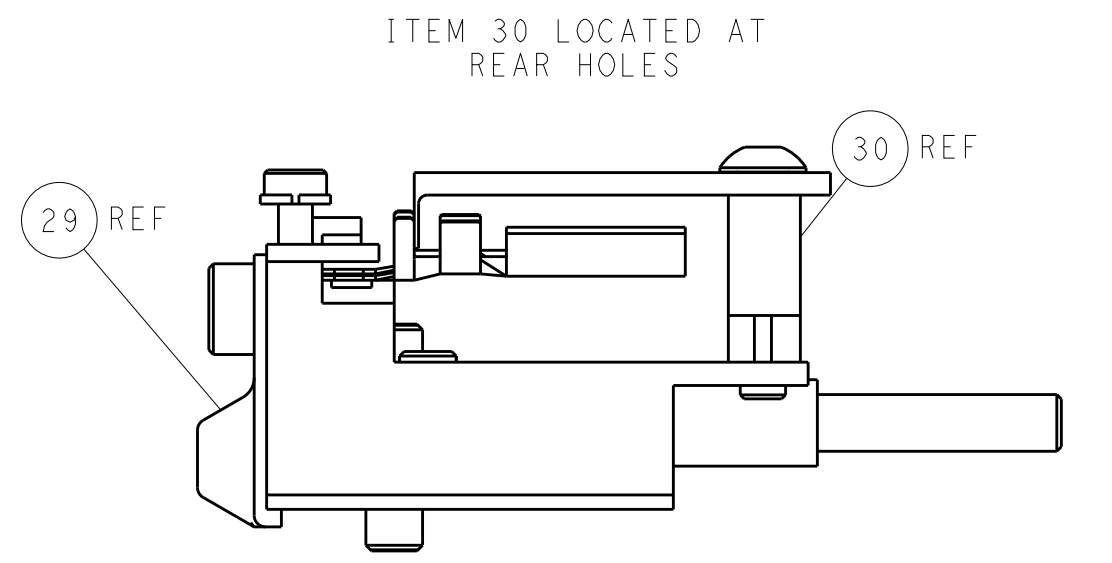
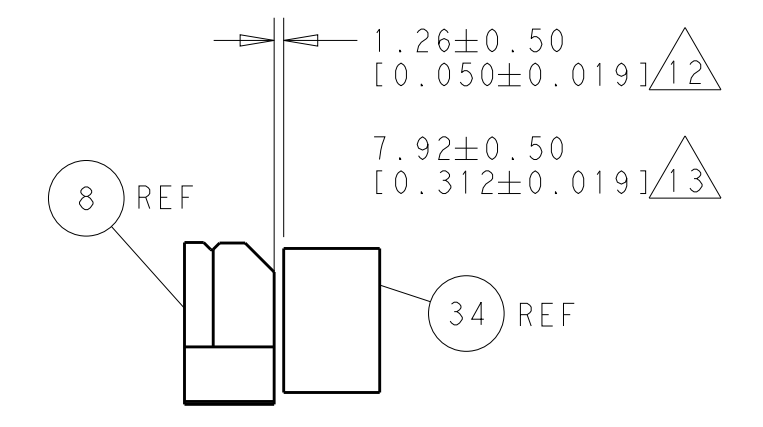
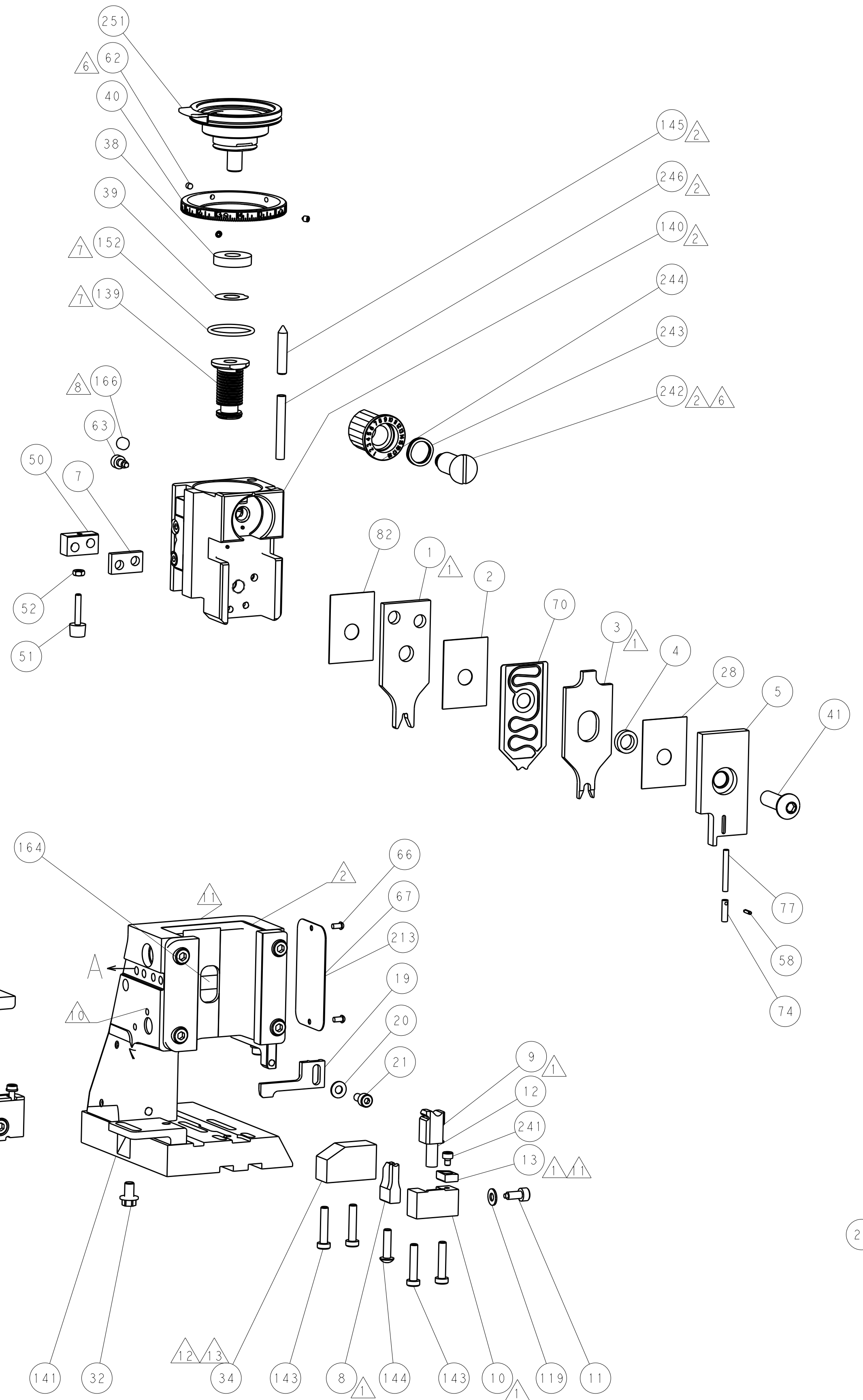
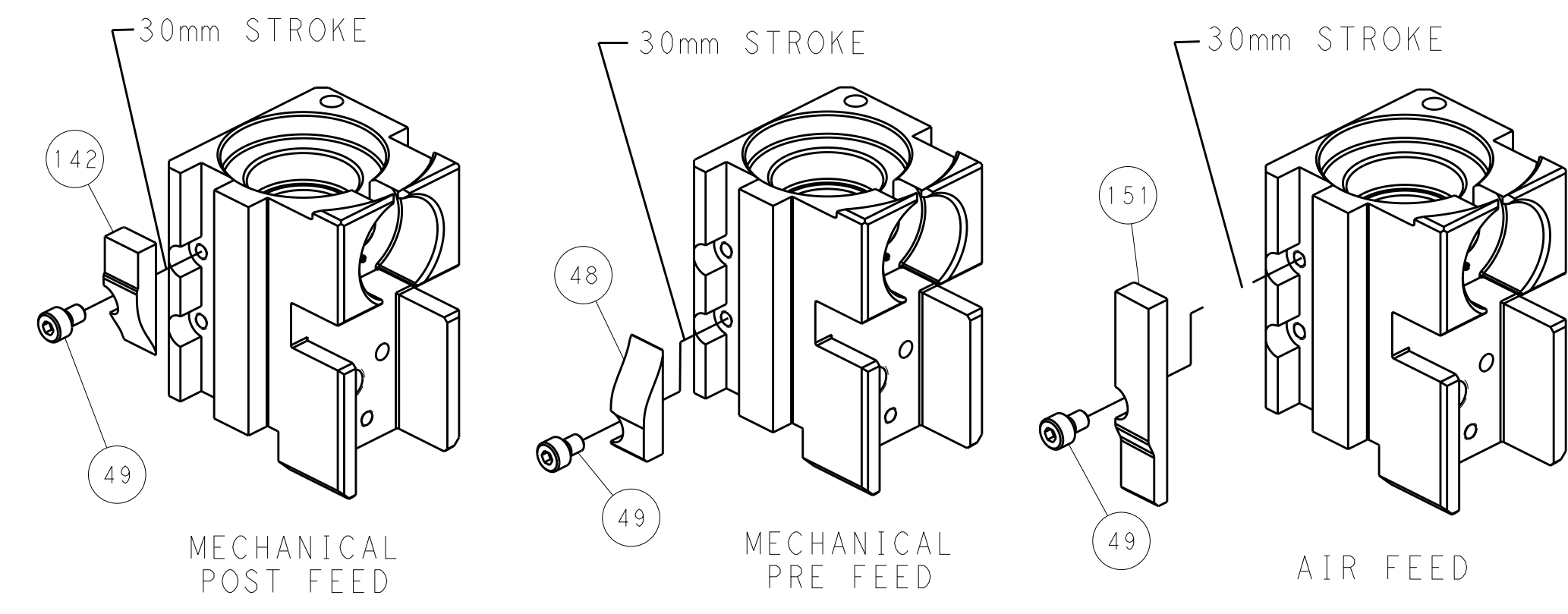
PNEUMATIC



SERVO LATCH PLATE



CAM POSITIONS



PACIFIC VERSION
Shown on sheets 3 of 4 & 4 of 4
(Atlantic version shown on sheets 1 of 4 & 2 of 4)

DIMENSIONS: mm		TOLERANCES UNLESS OTHERWISE SPECIFIED: 0 PLC ±.5 1 PLC ±0.5 2 PLC ±0.13 3 PLC ±0.013 4 PLC ±0.0001 ANGLES ±.1		FINISH	
MATERIAL		-		-	
OWN R. KNEPPER CHK G. BAILEY APVD W. CLIFFORD		21-Oct-13 21-Oct-13 21-Oct-13		NAME Ocean Side Feed Applicator	
SIZE A		CAGE CODE 00779		DRAWING NO C=2266124	
Customer Accessible Production Drawing		SCALE 1:2		SHEET 4	
				REV B	