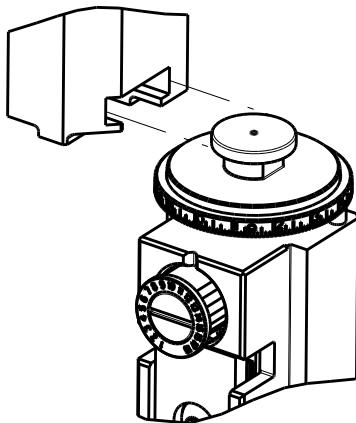






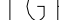
8		7		6		5		4		3			
THIS DRAWING IS UNPUBLISHED.		RELEASED FOR PUBLICATION		20									
© COPYRIGHT 20		BY TYCO ELECTRONICS CORPORATION. ALL RIGHTS RESERVED.											
ATLANTIC VERSION TERMINATOR INTERFACE ADAPTER		PART NUMBER	REVISION	DESCRIPTION	FEED TYPE	APPLICATOR STYLE CONVERSION CHART							
						CONVERT TO	PART NUMBERS REQUIRED						
		2266111-1	B	FINE CRIMP HEIGHT ADJUST	MECHANICAL	PNEUMATIC FEED	2119950-1	1338683-8	5-18022-5	2119641-1	2119799-1	2063440-1	
		2266111-2	B	FINE CRIMP HEIGHT ADJUST	PNEUMATIC	SERVO LATCH PLATE	2119951-1	-	8-2266111-5	1901094-3	-	2168400-6 (QUANTITY 2)	
						SMART APPLICATOR	2161326-1	-	8-2266111-4	-	-	-	
						MECHANICAL FEED	2119949-1	1338683-8	5-18022-5	2119653-1	-	-	
		2266111-5	B	FINE CRIMP HEIGHT ADJUST	SERVO LATCH PLATE <sup>4</sup>	SERVO LATCH PLATE	2119951-1	-	8-2266111-5	1901094-3	-	2168400-6 (QUANTITY 2)	
						SMART APPLICATOR	2161326-1	-	8-2266111-4	-	-	-	
						MECHANICAL FEED	2119949-1	1338683-8	5-18022-5	2119653-1	-	-	
		2266111-6	B	NON-CRIMP HEIGHT ADJUST	<sup>4</sup> SERVO LATCH PLATE <sup>12</sup>	PNEUMATIC FEED	2119950-1	1338683-8	5-18022-5	2119641-1	2119799-1	2063440-1	
						-	-	-	-	-	-	-	-
						-	-	-	-	-	-	-	-
2266111-7	B	FINE CRIMP HEIGHT ADJUST	NONE	-	-	-	-	-	-	-	-		
7-2266111-7	A	CRIMP TOOLING KIT	-	-	-	-	-	-	-	-	-		
7-2266111-8	A	APPLICATOR CONVERSION KIT	-	<sup>4</sup>	-	-	-	-	-	-	-		

APPLICATOR DATA		
CRIMP	SIZE	TYPE
WIRE	1.88 mm [ .074 ]	F
INSUL	1.32 mm [ .052 ]	O
APPLICATOR INSTRUCTIONS 408-10389		

APPLICATOR CONVERSION KITS	
PART NUMBER	INSULATION DIAMETER RANGE
7-2266110-8	Ø 1.60-2.39mm [.063-.094]
7-2266111-8	Ø 1.27-1.91mm [.050-.075]

TERMINAL DATA: DEUTSCH TERMINAL		TE CRIMP SPECIFICATION	
TERMINAL NAME: STAMPED CONTACT PIN SIZE 16			
WIRE STRIP LENGTH 3.81-5.09 mm [ .150-.200 IN ]		INSULATION DIAMETER RANGE Ø 1.27-1.91 mm [ .050-.075 IN ]	
TERMINAL APPLICATION SPECIFICATION		114-151000	
TERMINALS APPLIED		13	
TE TERMINAL	DEUTSCH TERMINAL	TE TERMINAL	DEUTSCH TERMINAL
286503-4	1060-16-0622	286503-5	1060-16-0644
1-286503-3	1060-16-0677	286503-6	1060-16-0688

TERMINAL DATA: DEUTSCH TERMINAL		TE CRIMP SPECIFICATION	
TERMINAL NAME: STAMPED CONTACT SOCKET SIZE 16			
WIRE STRIP LENGTH 3.81-5.09 mm [1.50-.200 IN]		INSULATION DIAMETER RANGE Ø1.27-1.91 mm [1.050-.075 IN]	
TERMINAL APPLICATION SPECIFICATION		TERMINAL APPLICATION SPECIFICATION	
114-151000		-	
-		-	
TERMINALS APPLIED 			
TE TERMINAL	DEUTSCH TERMINAL	TE TERMINAL	DEUTSCH TERMINAL
286504-4	1062-16-0622	286504-5	1062-16-0644
1-286504-4	1062-16-0677	286504-6	1062-16-0688

WIRE SIZE			CRIMP HEIGHT mm [INCH]		CRIMP HEIGHT REFERENCE SETTING
16 AWG			1.27±0.03/-0.05 [0.050±0.011/-0.002]		5.7
1.00mm2			1.27±0.03/-0.05 [0.050±0.011/-0.002]		5.6
18 AWG			1.24±0.03/-0.05 [0.049±0.011/-0.002]		5.9
0.75mm2			1.22±0.03/-0.05 [0.048±0.011/-0.002]		6.1
20 AWG			1.22±0.03/-0.05 [0.048±0.011/-0.002]		6.0
0.50mm2			1.14±0.03/-0.05 [0.045±0.011/-0.002]		7.0



1. RECOMMENDED SPARE PARTS
2. GREASE BEARING SURFACES LIGHTLY
3. LUBRICATE DAILY PER THE APPLICATOR INSTRUCTION SHEET SUPPLIED WITH THE APPLICATOR.
4. APPLICATOR SPECIFIC DATA TO BE ENTERED INTO BLANK MEMORY CHIP AT ASSEMBLY. SEE BELOW FOR PART NUMBER:  
MECHANICAL FEED WITH "SMART APPLICATOR" CONVERSION: 8-2266111-4  
PNEUMATIC FEED WITH "SMART APPLICATOR" CONVERSION: 8-2266111-4  
SERVO FEED WITH "FINE CRIMP HEIGHT ADJUST": 8-2266111-5  
SERVO FEED WITH "NON-CRIMP HEIGHT ADJUST": 8-2266111-6
5. ADJUSTMENT OF THE STRIPPER MAY BE REQUIRED WHEN MOVING THE APPLICATOR BETWEEN BENCH AND LEADMAKER APPLICATIONS.
6. APPLY PART NUMBER 1-23419-5 LOCTITE TO THREADS OF ITEMS 62.  
APPLY PART NUMBER 2-23419-6 LOCTITE TO THREADS OF ITEMS 242.  
FOR -6 ONLY APPLY PART NUMBER 1-23419-5 LOCTITE TO THREADS OF ITEM 37.
7. GREASE THREADS, GROOVE AND O-RING ON ITEMS 35 & 252.
8. MAGNET, ITEM 166 MUST BE ORIENTED CORRECTLY IN ORDER TO PROPERLY ACTUATE THE COUNTER.
9. CRIMP HEIGHT REFERENCE SETTING WAS THE SETTING USED WHEN THE APPLICATOR WAS QUALIFIED AT THE FACTORY. ADJUSTMENT MAY BE NECESSARY WHEN RUNNING APPLICATOR IN THE FIELD.
10. SPARE FEED CAM STORAGE LOCATION REFER TO INSTRUCTION SHEET FOR ADDITIONAL INFORMATION.
11. TO CONVERT THE APPLICATOR TO A NON-CARRIER CUTTING STYLE, REMOVE ITEM 13 AND ATTACH TO THE LOCATION ON THE BACK SIDE OF THE HOUSING. REFER TO INSTRUCTION SHEET FOR ADDITIONAL INFORMATION.
12. WHEN ASSEMBLING A NON CRIMP HEIGHT ADJUST APPLICATOR (-6) USE SHIMS FROM ITEM 260 TO ACHIEVE A NOMINAL SHIM HEIGHT OF 4.53.
13. DIMENSION  $1.00 \pm 0.50$  [0.039 $\pm$ 0.019] APPLIES TO PIN TERMINALS 1060-06-06
14. DIMENSION  $7.60 \pm 0.50$  [0.299 $\pm$ 0.019] APPLIES TO SOCKET TERMINALS 1062-06
15. SEE APPROPRIATE APPLICATOR LOG SHEETS FOR APPLIED TERMINALS, WIRE RANGE

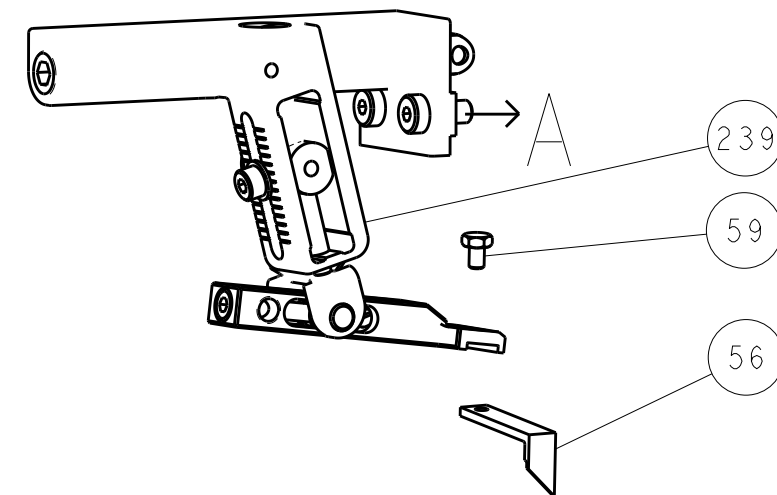
-	-	-	1	-	-	-	2119957-2	APPLICATOR SHIM PACK	260
-	-	1	-	1	1	1	8-21084-0	O-RING, .676 ID, .070 DIA. MAT.	252
-	-	-	-	-	1	-	2119640-1	PUSH ROD, AIR FEED	250
-	-	-	-	-	1	-	2079988-1	BUSHING, LCH5-12, MISHUMI	249
-78	-77	-7	-6	-5	-2	-1	PART NO	DESCRIPTION	ITEM NO

ATLANTIC VERSION  
Shown on sheets 1 of 4 & 2 of 4  
(Pacific version shown on sheets 3 of 4 & 4 of 4)

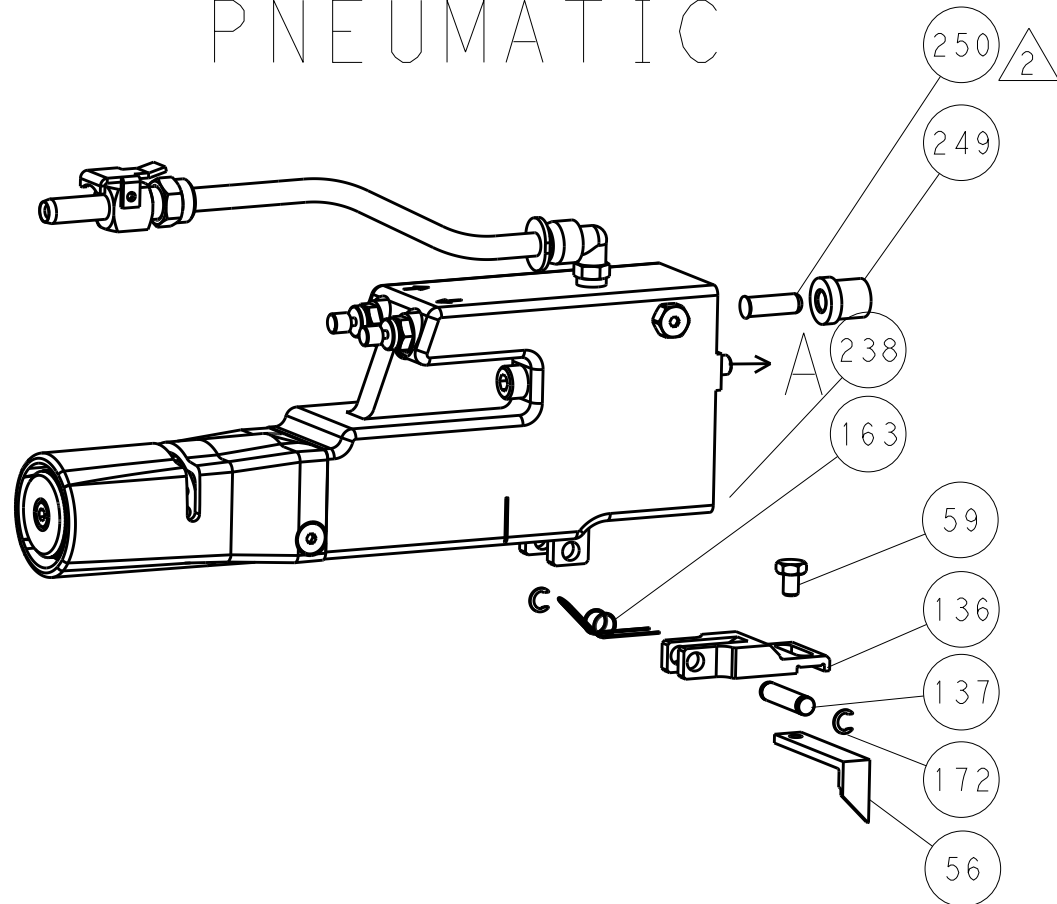
		2				1	
SET UP GAUGE 2119599-1		LOC A	DIST 66	REVISIONS			
P	LTR	DESCRIPTION		DATE	OWN	APPV	
	A2	ECR-14-003873		14MAR2014	RK	GB	
	B	ECR-15-011978		12AUG2015	RH	JDG	
-	-	-	-	-	1	-	
-	-	1	-	1	1	1	
-	-	1	-	1	1	1	
-	-	-	1	-	-	-	
-	-	1	1	1	1	1	
-	-	1	1	1	1	1	
-	-	1	1	1	1	1	
-	-	-	2	2	-	-	
-	-	-	-	-	-	1	
-	-	-	-	-	1	-	
-	-	-	1	1	-	-	
-	-	-	-	-	2	-	
-	-	1	1	1	1	1	
-	-	REF	REF	REF	REF	REF	
-	-	-	-	-	1	-	
-	-	-	-	-	1	-	
-	-	-	-	-	1	-	
-	-	REF	REF	-	-	-	
-	-	-	1	1	-	-	
-	-	1	1	1	1	1	
-	-	1	1	1	1	1	
-	-	REF	REF	-	-	-	
-	-	1	1	1	1	1	
1	-	-	-	-	-	-	
-	-	1	1	1	1	1	
-	-	2	2	2	2	2	
-	-	1	-	-	1	1	
-	-	2	2	2	2	2	
-	-	1	-	1	1	1	
-	-	3	-	3	3	3	
-	-	1	1	1	1	1	
-	-	-	-	-	1	1	
-	-	-	-	-	1	1	
-	-	4	4	4	4	4	
-	-	2	2	2	2	2	
-	-	1	1	1	1	1	
-	-	1	1	1	1	1	
-	-	1	1	1	1	1	
-	-	1	1	1	1	1	
-	-	-	-	-	1	2	
-	-	-	-	-	-	1	
-	-	1	1	1	1	1	
-	-	1	-	1	1	1	
-	-	1	1	1	1	1	
-	-	1	1	1	1	1	
-	-	1	1	1	1	1	
-	-	1	1	1	1	1	
-	-	1	1	1	1	1	
-	-	1	1	1	1	1	
-	-	1	1	1	1	1	
-	-	1	1	1	1	1	
-	-	1	1	1	1	1	
-	-	1	1	1	1	1	
-	-	1	1	1	1	1	
-	-	1	1	1	1	1	
-	-	1	1	1	1	1	
-	-	1	1	1	1	1	
-	-	1	1	1	1	1	
-	-	1	1	1	1	1	
-	-	1	1	1	1	1	
-	-	1	1	1	1	1	
-	-	1	1	1	1	1	
-	-	1	1	1	1	1	
-	-	1	1	1	1	1	
-	-	1	1	1	1	1	
-	-	1	1	1	1	1	
-	-	1	1	1	1	1	
-	-	1	1	1	1	1	
-	-	1	1	1	1	1	
-	-	1	1	1	1	1	
-	-	1	1	1	1	1	
-	-	1	1	1	1	1	
-	-	1	1	1	1	1	
-	-	1	1	1	1	1	
-	-	1	1	1	1	1	
-	-	1	1	1	1	1	
-	-	1	1	1	1	1	
-	-	1	1	1	1	1	
-	-	1	1	1	1	1	
-	-	1	1	1	1	1	
-	-	1	1	1	1	1	
-	-	1	1	1	1	1	
-	-	1	1	1	1	1	
-	-	1	1	1	1	1	
-	-	1	1	1	1	1	
-	-	1	1	1	1	1	
-	-	1	1	1	1	1	
-	-	1	1	1	1	1	
-	-	1	1	1	1	1	
-	-	1	1	1	1	1	
-	-	1	1	1	1	1	
-	-	1	1	1	1	1	
-	-	1	1	1	1	1	
-	-	1	1	1	1	1	
-	-	1	1	1	1	1	
-	-	1	1	1	1	1	
-	-	1	1	1	1	1	
-	-	1	1	1	1	1	
-	-	1	1	1	1	1	
-	-	1	1	1	1	1	
-	-	1	1	1	1	1	
-	-	1	1	1	1	1	
-	-	1	1	1	1	1	
-	-	1	1	1	1	1	
-	-	1	1	1	1	1	
-	-	1	1	1	1	1	
-	-	1	1	1	1	1	
-	-	1	1	1	1	1	
-	-	1	1	1	1	1	
-	-	1	1	1	1	1	
-	-	1	1	1	1	1	
-	-	1	1	1	1	1	
-	-	1	1	1	1	1	
-	-	1	1	1	1	1	
-	-	1	1	1	1	1	
-	-	1	1	1	1	1	
-	-	1	1	1	1	1	
-	-	1	1	1	1	1	
-	-	1	1	1	1	1	
-	-	1	1	1	1	1	
-	-	1	1	1	1	1	
-	-	1	1	1	1	1	
-	-	1	1	1	1	1	
-	-	1	1	1	1	1	
-	-	1	1	1	1	1	
-	-	1	1	1	1	1	
-	-	1	1	1	1	1	
-	-	1	1	1	1	1	
-	-	1	1	1	1	1	
-	-	1	1	1	1	1	
-	-	1	1	1	1	1	
-	-	1	1	1	1	1	
-	-	1	1	1	1	1	
-	-	1	1	1	1	1	
-	-	1	1	1	1	1	
-	-	1	1	1	1	1	
-	-	1	1	1	1	1	
-	-	1	1	1	1	1	
-	-	1	1	1	1	1	
-	-	1	1	1	1	1	
-	-	1	1	1	1	1	
-	-	1	1	1	1	1	
-	-	1	1	1	1	1	
-	-	1	1	1	1	1	
-	-	1	1	1	1	1	
-	-	1	1	1	1	1	
-	-	1	1	1	1	1	
-	-	1	1	1	1	1	
-	-						

LOC		DIST		REVISONS			
A	66	P	LTR	DESCRIPTION	DATE	DWN	APVD
		-		SEE SHEET 1	-	-	-

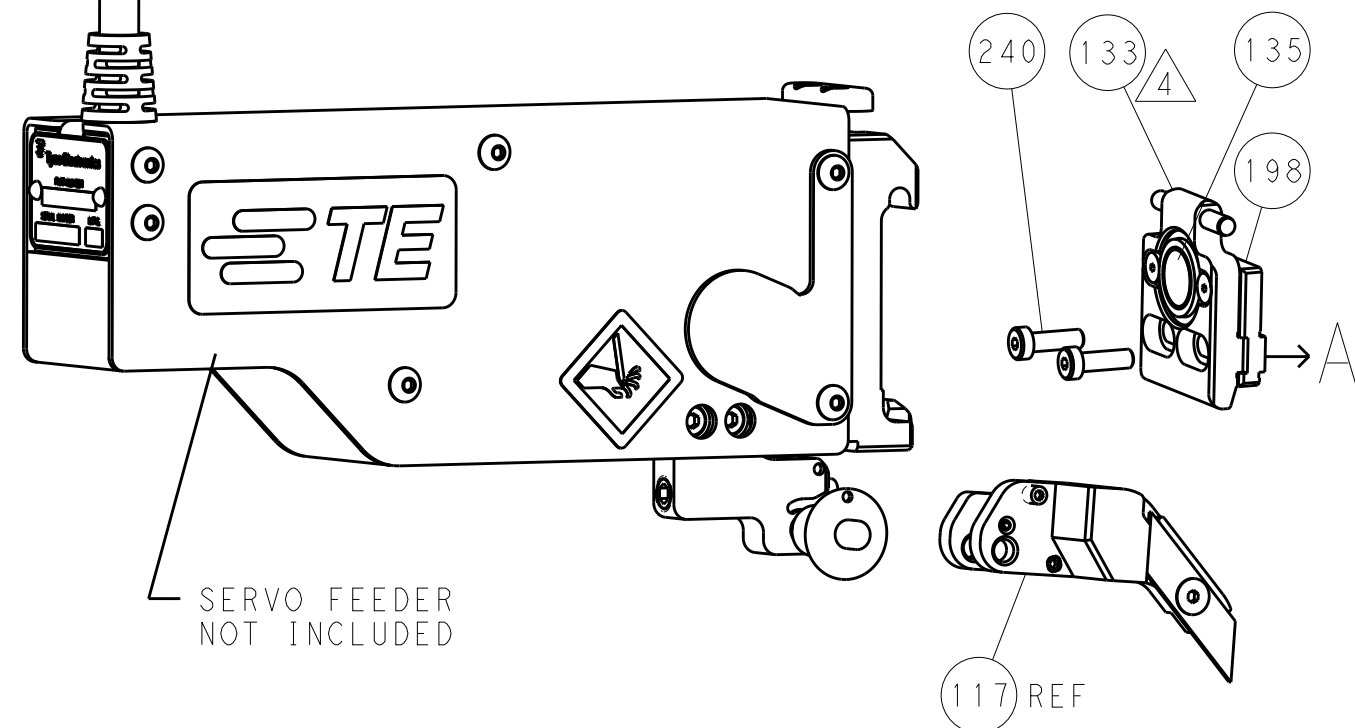
FEED TYPE  
MECHANICAL



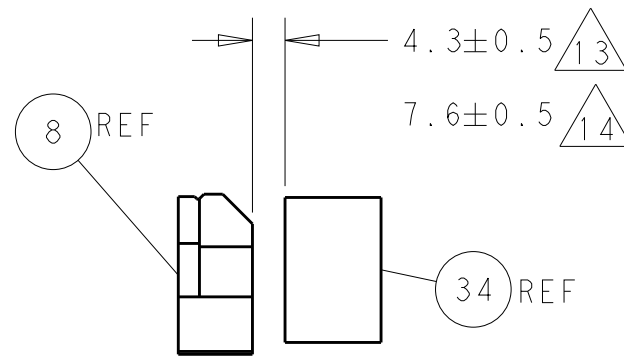
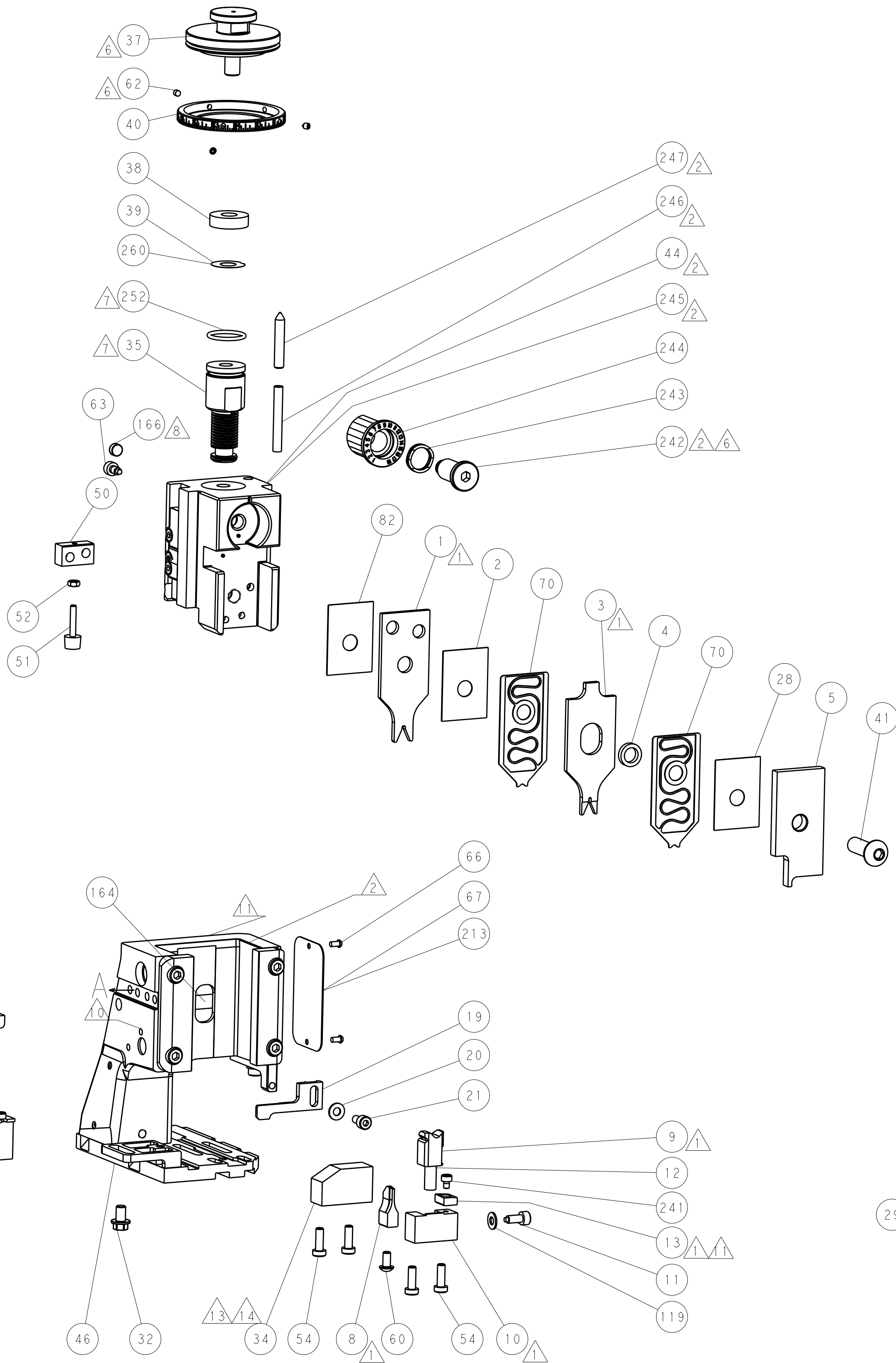
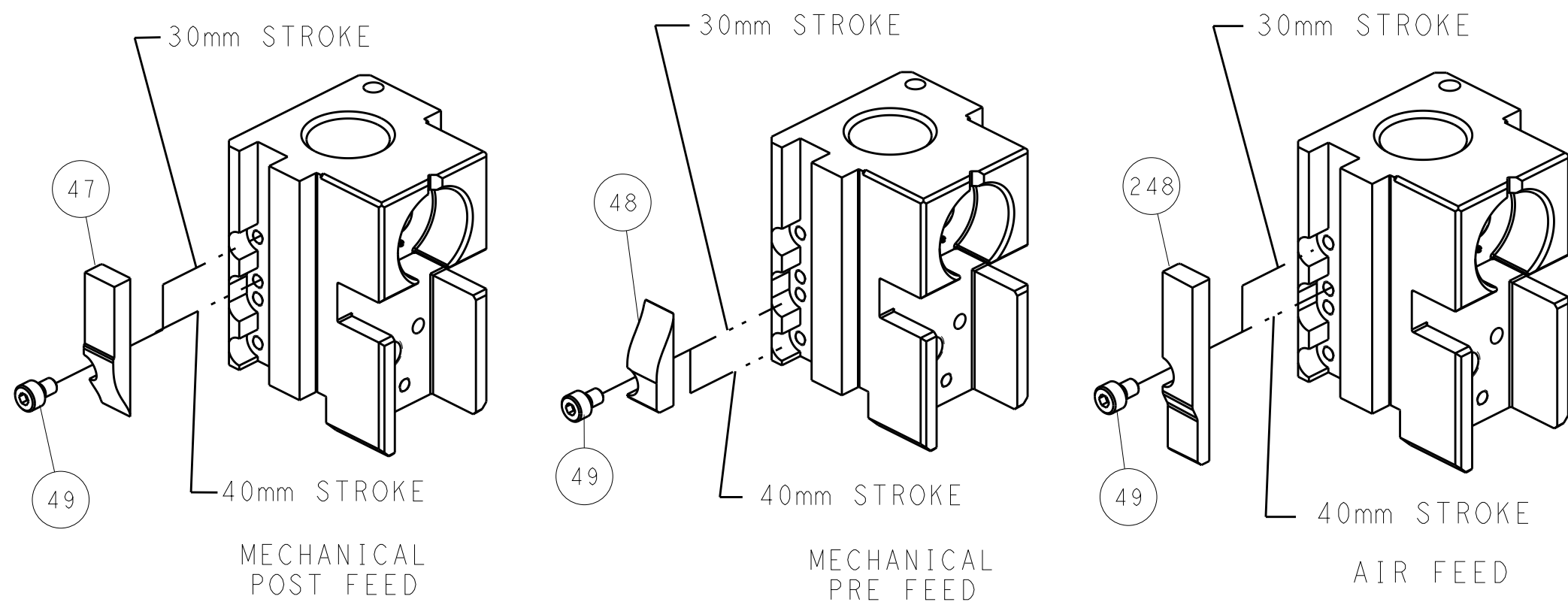
PNEUMATIC



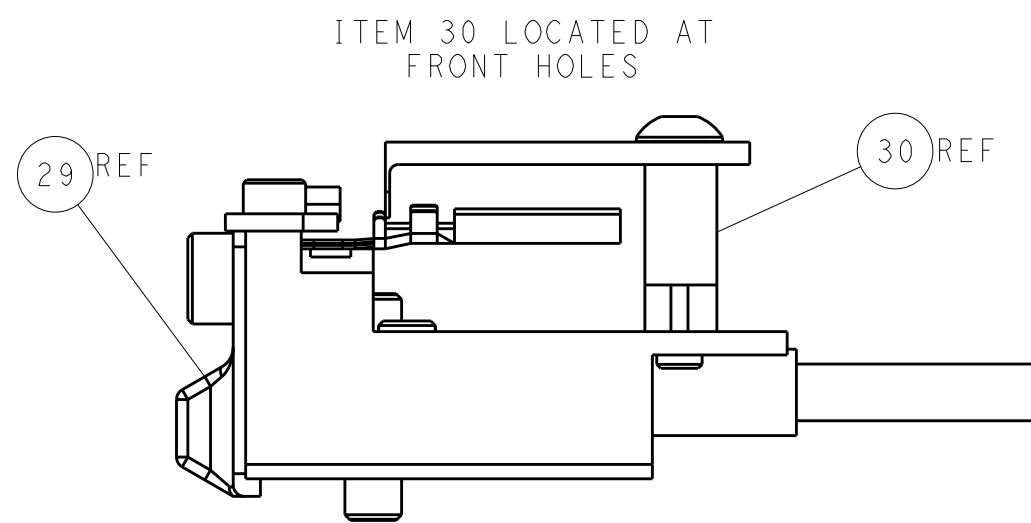
SERVO  
LATCH PLATE



CAM POSITIONS



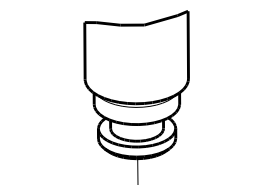
TERMINAL SUPPORT LOCATION




FEED TRACK POSITION  
GUIDE BY INSULATION BARREL

ATLANTIC VERSION  
Shown on sheets 1 of 4 & 2 of 4  
(Pacific version shown on sheets 3 of 4 & 4 of 4)

THIS DRAWING IS UNPUBLISHED. IT IS SUBJECT TO CHANGE WITHOUT NOTICE. ANY CHANGES TO THIS DRAWING SHOULD BE CONTACTED FOR THE LATEST REVISION.				DWN: R. KNEPPER 09-Oct-13 CHK: G. BAILEY 09-Oct-13 APVD: W. CLIFFORD 09-Oct-13				TE Connectivity Harrisburg, PA 17105-3608			
DIMENSIONS: mm				TOLERANCES UNLESS OTHERWISE SPECIFIED: 0 PLC ±.5 1 PLC ±0.13 2 PLC ±0.13 3 PLC ±0.013 4 PLC ±0.0001 ANGLES .5°				NAME: Ocean Side Feed Applicator			
MATERIAL: -				FINISH: -				SIZE: A1			
Customer Accessible Production Drawing				WEIGHT: -				CAGE CODE: 00779			
SCALE: 1:2				DRAWING NO: C=2266111				SHEET 2 OF 4			
REV: B				RESTRICTED TO: -							




8		7		6		5		4		3	
THIS DRAWING IS UNPUBLISHED.		RELEASED FOR PUBLICATION		20							
© COPYRIGHT 20		BY TYCO ELECTRONICS CORPORATION. ALL RIGHTS RESERVED.									
PACIFIC VERSION TERMINATOR INTERFACE ADAPTER	PART NUMBER	REVISION	DESCRIPTION	FEED TYPE	APPLICATOR STYLE CONVERSION CHART						
					CONVERT TO	PART NUMBERS REQUIRED					
	2-2266111-1	B	FINE CRIMP HEIGHT ADJUST	MECHANICAL	PNEUMATIC FEED	2119950-1	1338683-8	5-18022-5	2119641-2	2119799-1	2063440-1
					SERVO LATCH PLATE	2119951-1	-	8-2266111-5	1901094-3	-	2168400-6 (QUANTITY 2)
					SMART APPLICATOR	2161326-1	-	8-2266111-4	-	-	-
	2-2266111-2	B	FINE CRIMP HEIGHT ADJUST	PNEUMATIC	MECHANICAL FEED	2119949-1	1338683-8	5-18022-5	2119653-2	-	-
					SERVO LATCH PLATE	2119951-1	-	8-2266111-5	1901094-3	-	2168400-6 (QUANTITY 2)
					SMART APPLICATOR	2161326-1	-	8-2266111-4	-	-	-
	2-2266111-5	B	FINE CRIMP HEIGHT ADJUST	SERVO LATCH PLATE <sup>4</sup>	MECHANICAL FEED	2119949-1	1338683-8	5-18022-5	2119653-2	-	-
					PNEUMATIC FEED	2119950-1	1338683-8	5-18022-5	2119641-2	2119799-1	2063440-1
	2-2266111-7	B	FINE CRIMP HEIGHT ADJUST	NONE	-	-	-	-	-	-	-
	7-2266111-7	A	CRIMP TOOLING KIT	-	-	-	-	-	-	-	-
7-2266111-8	A	APPLICATOR CONVERSION KIT	-	<sup>4</sup>							


APPLICATOR DATA		
CRIMP	SIZE	TYPE
WIRE	1.88 mm [ .074]	F
INSUL	1.32 mm [ .052]	O
APPLICATOR INSTRUCTIONS 408-10389		

14 APPLICATOR CONVERSION KITS	
PART NUMBER	INSULATION DIAMETER RANGE
7-2266110-8	Ø 1.60-2.39mm [.063-.094]
7-2266111-8	Ø 1.27-1.91mm [.050-.075]

TERMINAL DATA: DEUTSCH TERMINAL		TE CRIMP SPECIFICATION	
TERMINAL NAME: STAMPED CONTACT PIN SIZE 16			
WIRE STRIP LENGTH 3.81-5.09 mm [.150-.200 IN]		INSULATION DIAMETER RANGE Ø1.27-1.91 mm [.050-.075 IN]	
TERMINAL APPLICATION SPECIFICATION 114-151000		- -	
TERMINALS APPLIED $\Delta_{12}$			
TE TERMINAL	DEUTSCH TERMINAL	TE TERMINAL	DEUTSCH TERMINAL
286503-4	1060-16-0622	286503-5	1060-16-0644
1-286503-3	1060-16-0677	286503-6	1060-16-0688

TERMINAL DATA: DEUTSCH TERMINAL		TE CRIMP SPECIFICATION	
TERMINAL NAME: STAMPED CONTACT SOCKET SIZE 16			
WIRE STRIP LENGTH 3.81-5.09 mm [150-.200 IN]		INSULATION DIAMETER RANGE Ø1.27-1.91 mm [.050-.075 IN]	
TERMINAL APPLICATION SPECIFICATION		114-151000 - - -	
TERMINALS APPLIED			
TE TERMINAL	DEUTSCH TERMINAL	TE TERMINAL	DEUTSCH TERMINAL
286504-4	1062-16-0622	286504-5	1062-16-0644
1-286504-4	1062-16-0677	286504-6	1062-16-0688

WIRE SIZE			CRIMP HEIGHT mm [INCH]		CRIMP HEIGHT REFERENCE SETTING
16 AWG			1.27±0.03/-0.05 [0.050±.001/- .002]		5.7
1.00mm <sup>2</sup>			1.27±0.03/-0.05 [0.050±.001/- .002]		5.6
18 AWG			1.24±0.03/-0.05 [0.049±.001/- .002]		5.9
0.75mm <sup>2</sup>			1.22±0.03/-0.05 [0.048±.001/- .002]		6.1
20 AWG			1.22±0.03/-0.05 [0.048±.001/- .002]		6.0
0.50mm <sup>2</sup>			1.14±0.03/-0.05 [0.045±.001/- .002]		7.0



1. RECOMMENDED SPARE PARTS
2. GREASE BEARING SURFACES LIGHTLY
3. LUBRICATE DAILY PER THE APPLICATOR INSTRUCTION SHEET SUPPLIED WITH THE APPLICATOR.
4. APPLICATOR SPECIFIC DATA TO BE ENTERED INTO BLANK MEMORY CHIP AT ASSEMBLY. SEE BELOW FOR PART NUMBER:  
 MECHANICAL FEED WITH "SMART APPLICATOR" CONVERSION: 8-2266111-4  
 PNEUMATIC FEED WITH "SMART APPLICATOR" CONVERSION: 8-2266111-4  
 SERVO FEED WITH "FINE CRIMP HEIGHT ADJUST": 8-2266111-5
5. ADJUSTMENT OF THE STRIPPER MAY BE REQUIRED WHEN MOVING THE APPLICATOR BETWEEN BENCH AND LEADMAKER APPLICATIONS.
6. APPLY PART NUMBER 1-23419-5 LOCTITE TO THREADS OF ITEMS 62.  
 APPLY PART NUMBER 2-23419-6 LOCTITE TO THREADS OF ITEMS 242.
7. GREASE THREADS, GROOVE AND O-RING ON ITEMS 139 & 152.
8. MAGNET MUST BE ORIENTED CORRECTLY IN ORDER TO PROPERLY ACTUATE THE COUNTER.
9. CRIMP HEIGHT REFERENCE SETTING WAS THE SETTING USED WHEN THE APPLICATOR WAS QUALIFIED AT THE FACTORY. ADJUSTMENT MAY BE NECESSARY WHEN RUNNING APPLICATOR IN THE FIELD.
10. SPARE FEED CAM STORAGE LOCATION REFER TO INSTRUCTION SHEET FOR ADDITIONAL INFORMATION.
11. TO CONVERT THE APPLICATOR TO A NON-CARRIER CUTTING STYLE, REMOVE ITEM 13 AND ATTACH TO THE LOCATION ON BACK SIDE OF THE HOUSING. REFER TO INSTRUCTION SHEET FOR ADDITIONAL INFORMATION.
12. DIMENSION  $1.00 \pm 0.50$  [0.039  $\pm$  0.019] APPLIES TO PIN TERMINALS 1060-00
13. DIMENSION  $7.60 \pm 0.50$  [0.299  $\pm$  0.019] APPLIES TO SOCKET TERMINALS 1062
14. SEE APPROPRIATE APPLICATOR LOG SHEETS FOR APPLIED TERMINALS, WIRE

-	-	1	1	1	1	2119782-1	FINE ADJUST HEAD ASM, PACIFIC STYLE	251
-	-	-	-	1	-	2119640-1	PUSH ROD, AIR FEED	250
-78	-77	-27	-25	-22	-21	PART NO	DESCRIPTION	ITEM NO

[illegible]

LOC	DIST	REVISIONS				
		P	LTR	DESCRIPTION	DATE	OWN
A	66	-	-	SEE SHEET 1	-	-

D

C

B

A

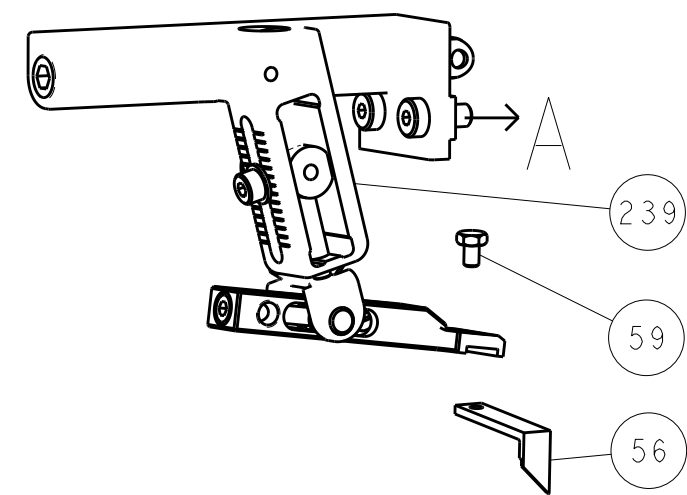
D

C

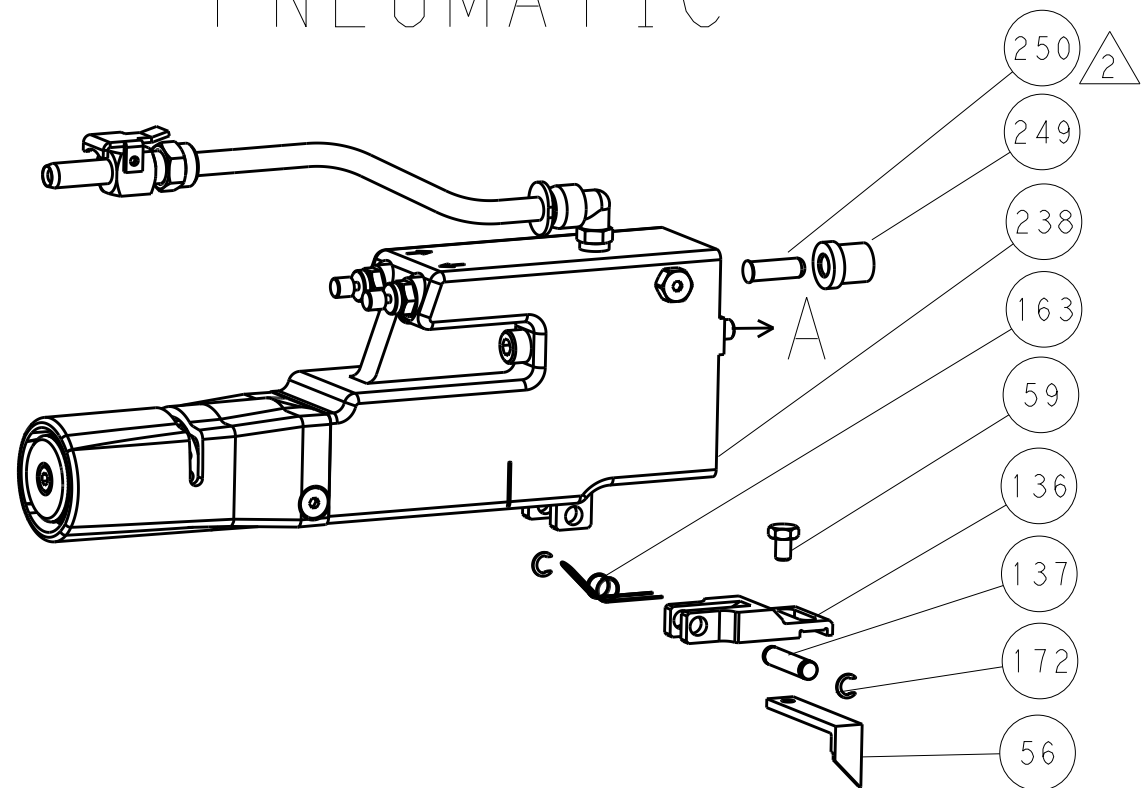
B

A

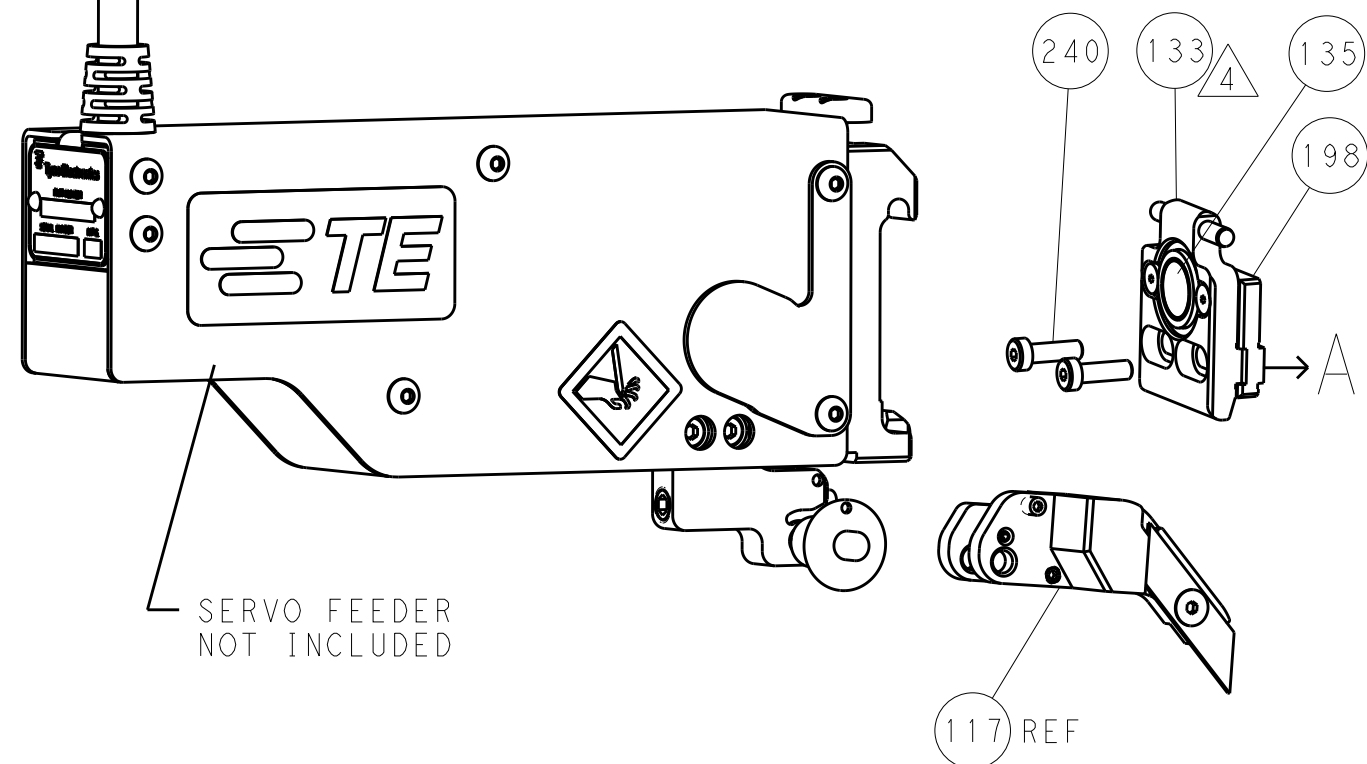
# FEED TYPE MECHANICAL



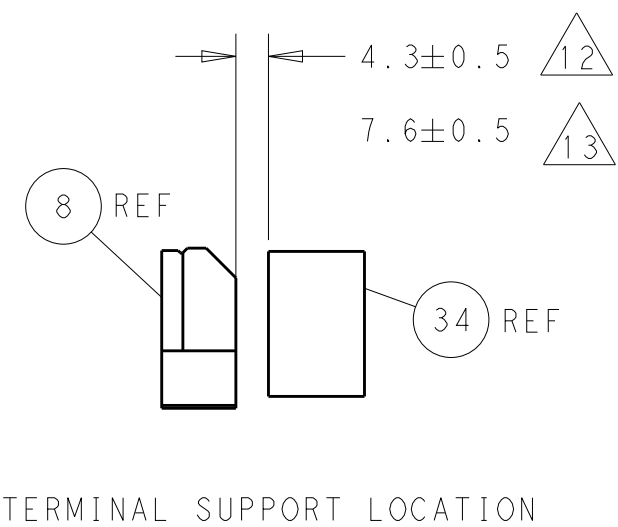
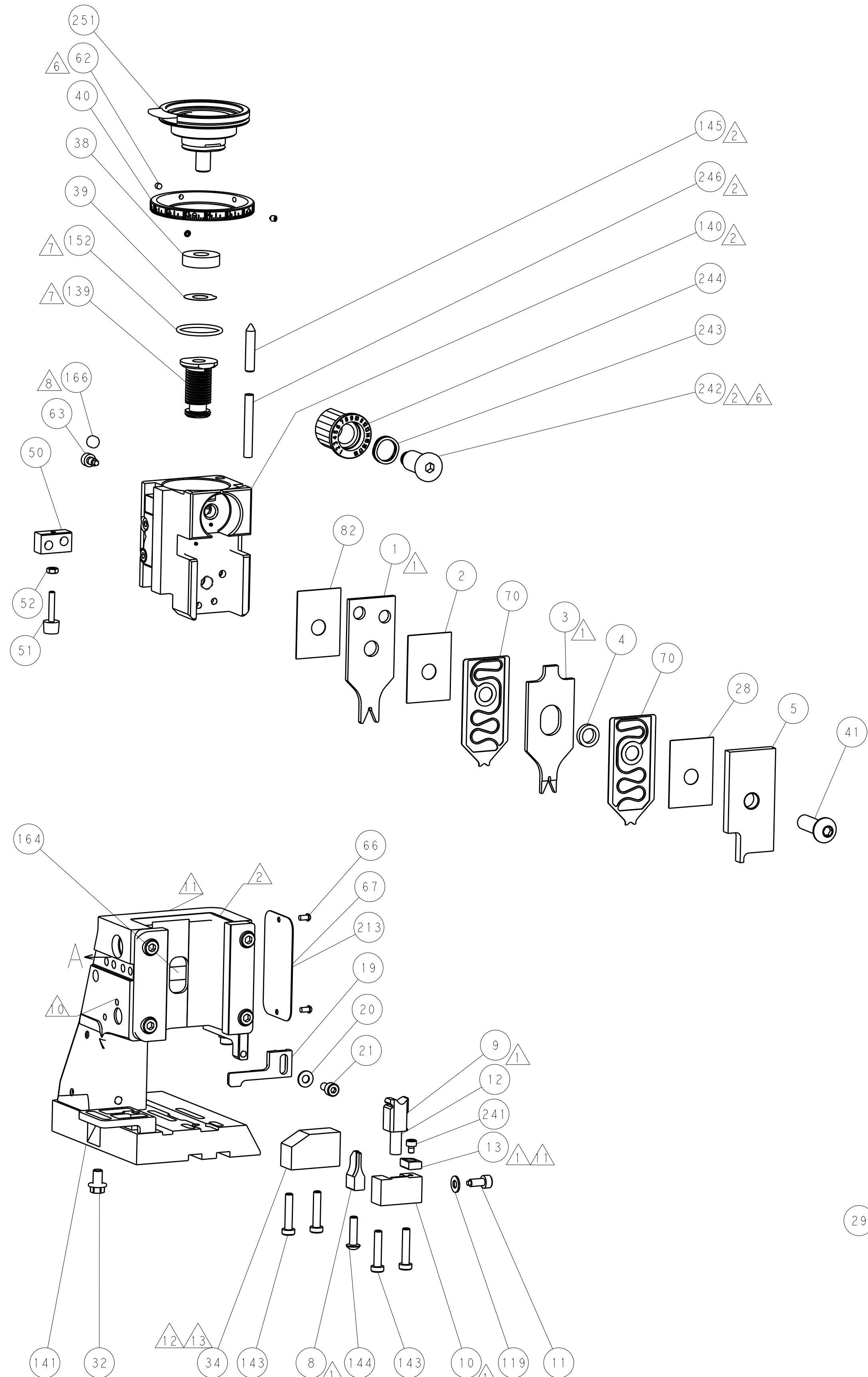
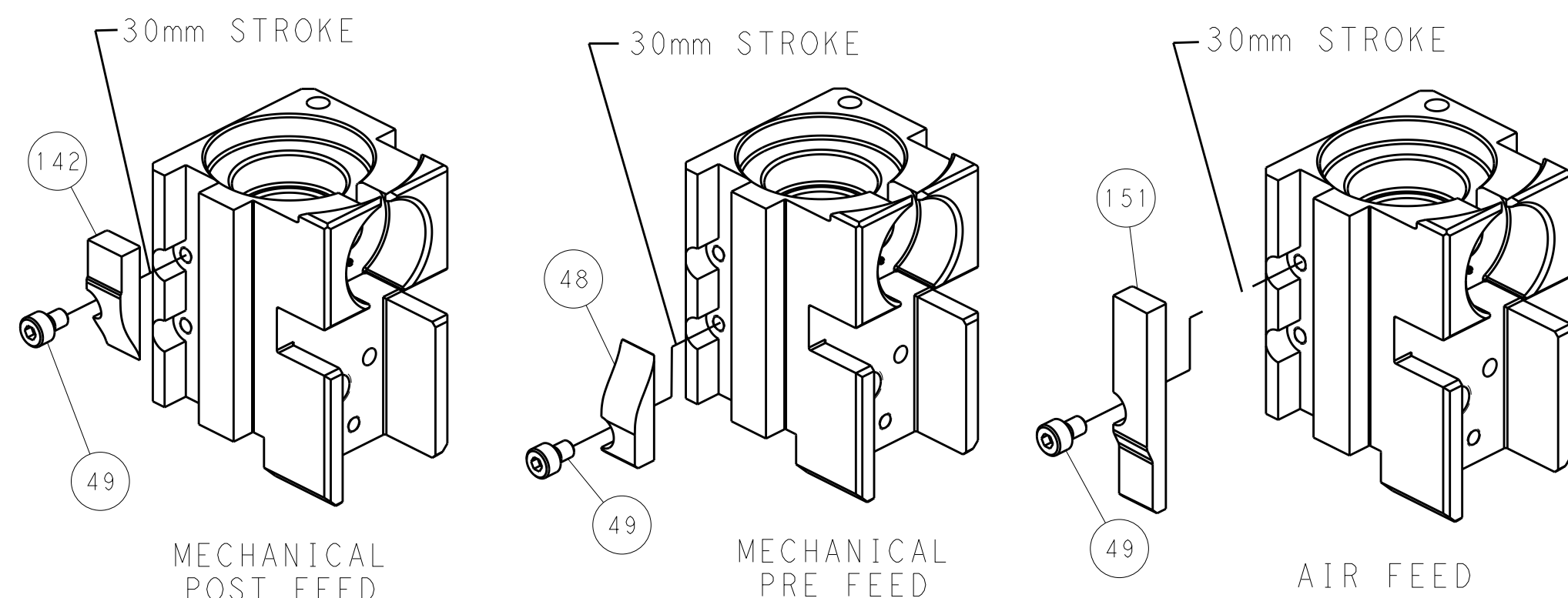
# PNEUMATIC



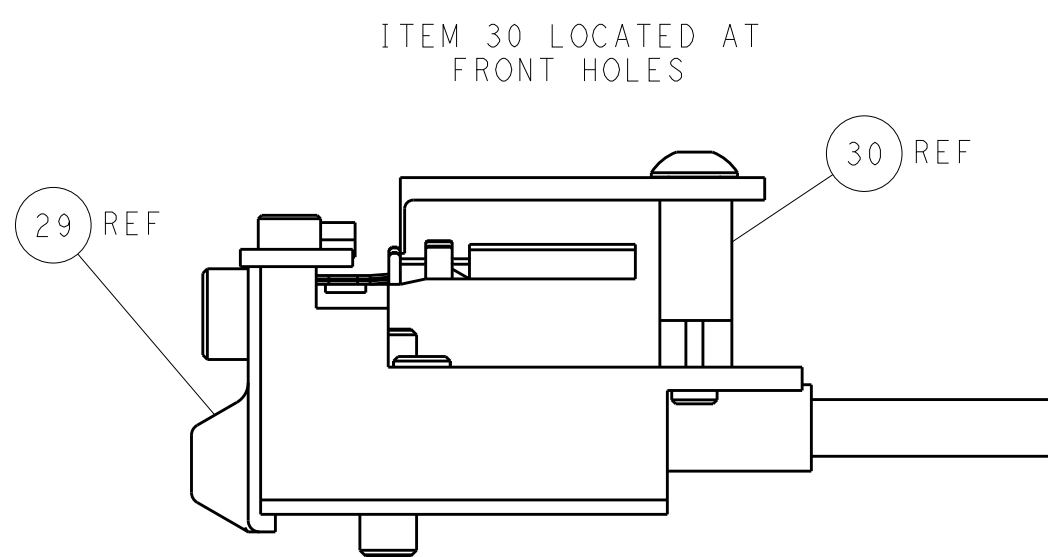
# SERVO LATCH PLATE



# CAM POSITIONS



TERMINAL SUPPORT LOCATION



FEED TRACK POSITION  
GUIDE BY INSULATION BARREL

PACIFIC VERSION  
Shown on sheets 3 of 4 & 4 of 4  
(Atlantic version shown on sheets 1 of 4 & 2 of 4)

DIMENSIONS: mm		TOLERANCES UNLESS OTHERWISE SPECIFIED:		OWN R. KNEPPER 09-Oct-13		TE Connectivity Harrisburg, PA 17105-3608	
0 PLC ±0.5		1 PLC ±0.13		CHK G. BAILEY 09-Oct-13		NAME Ocean Side Feed Applicator	
2 PLC ±0.13		3 PLC ±0.013		APVD W. CLIFFORD 09-Oct-13		SIZE A1	
4 PLC ±0.0001		ANGLES FINISH		PRODUCT SPEC		CAGE CODE 00779	
MATERIAL		WEIGHT		APPLICATION SPEC		DRAWING NO C=2266111	
Customer Accessible Production Drawing		SCALE 1:2		SHEET 4		REV B	

SHEETS 1 & 2 ARE NOT REQUIRED FOR PACIFIC VERSION