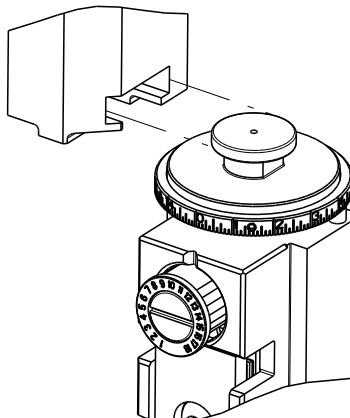
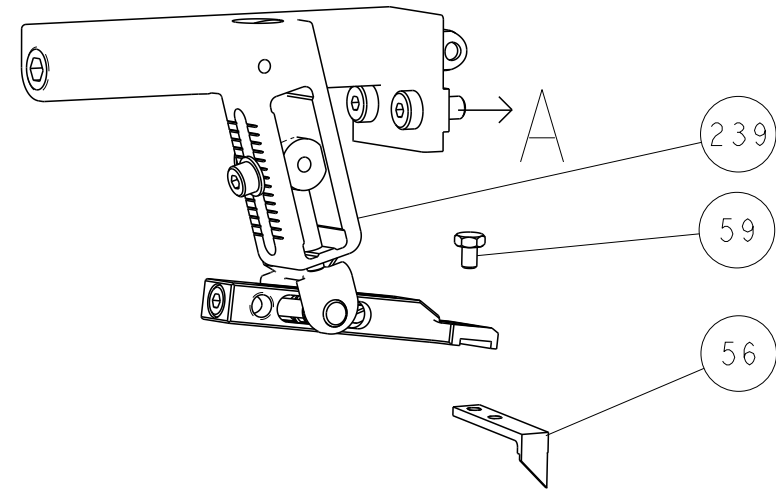


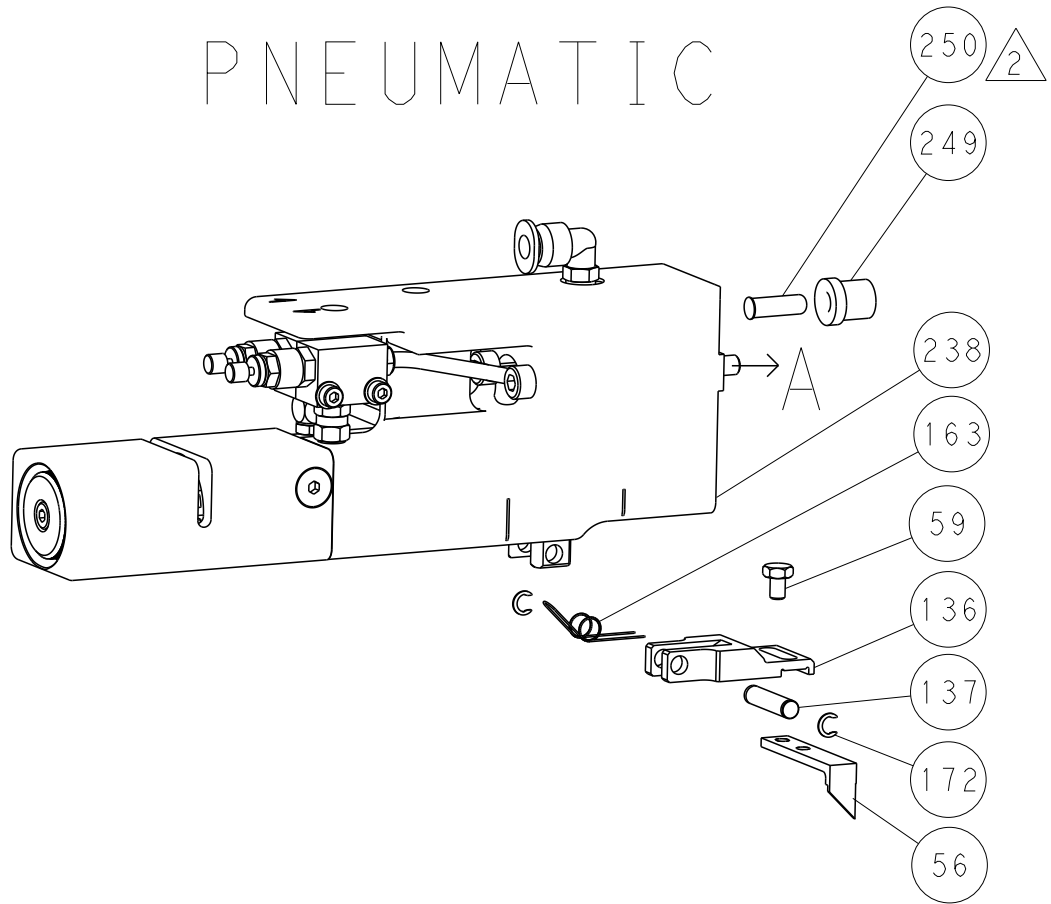
|  |   |                          |          |                           |
|--|---|--------------------------|----------|---------------------------|
| 8  |   | 7                        |          |                           |
| THIS DRAWING IS UNPUBLISHED.   |   | RELEASED FOR PUBLICATION |          |                           |
| COPYRIGHT 20   |   | 20                       |          |                           |
| BY TYCO ELECTRONICS CORPORATION. ALL RIGHTS RESERVED.                            |   |                          |          |                           |
|  | ATLANTIC VERSION<br>TERMINATOR<br>INTERFACE ADAPTER | PART<br>NUMBER           | REVISION | DESCRIPTION               |
|  |   | 2266103-1                | B        | FINE CRIMP HEIGHT ADJUST  |
|  |   | 2266103-2                | B        | FINE CRIMP HEIGHT ADJUST  |
|  |   | 2266103-5                | B        | FINE CRIMP HEIGHT ADJUST  |
|  |   | 2266103-6                | B        | NON-CRIMP HEIGHT ADJUST   |
|  |   | 2266103-7                | B        | FINE CRIMP HEIGHT ADJUST  |
|  |   | 7-2266103-7              | A        | CRIMP TOOLING KIT         |
|  |   | 7-2266103-8              | B        | APPLICATOR CONVERSION KIT |

| LOC |    | DIST |     | REVISONS    |      |     |      |  |
|-----|----|------|-----|-------------|------|-----|------|--|
| A   | 66 | P    | LTR | DESCRIPTION | DATE | DWN | APVD |  |
|     |    | -    |     | SEE SHEET 1 | -    | -   | -    |  |
|     |    |      |     |             |      |     |      |  |
|     |    |      |     |             |      |     |      |  |

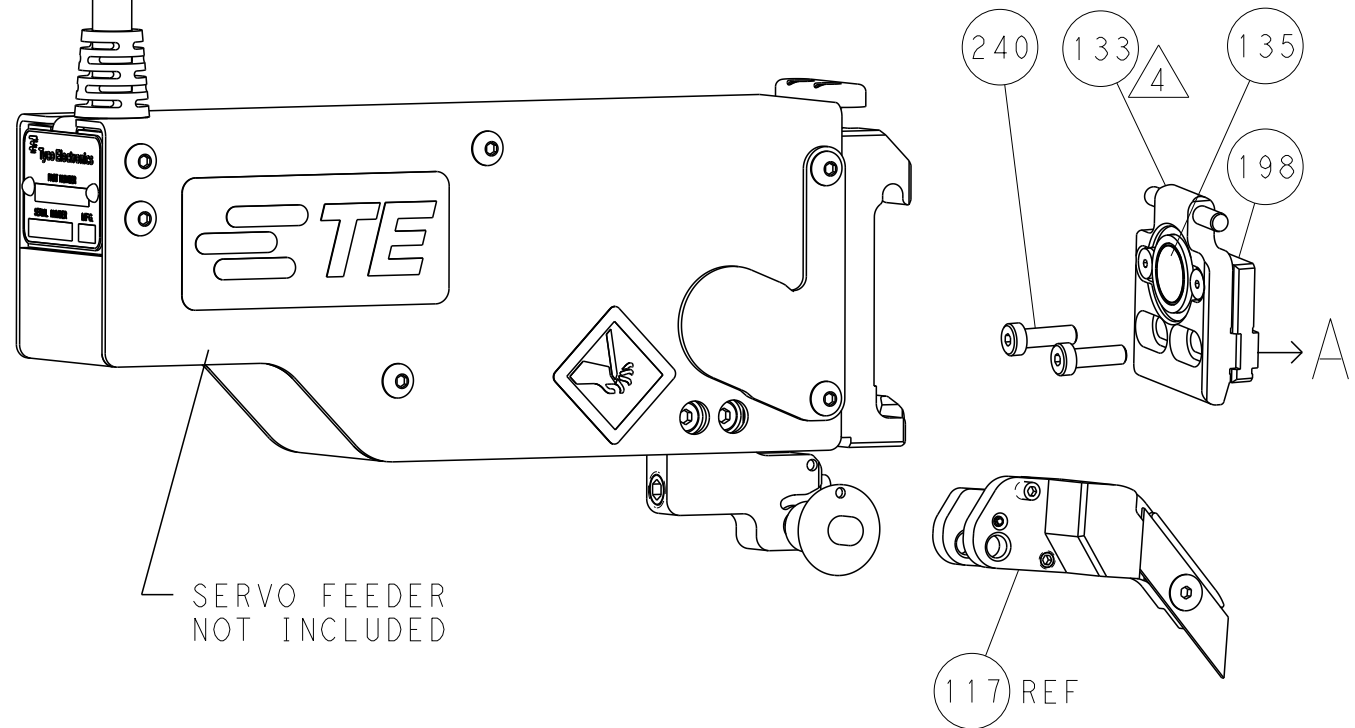
FEED TYPE  
MECHANICAL



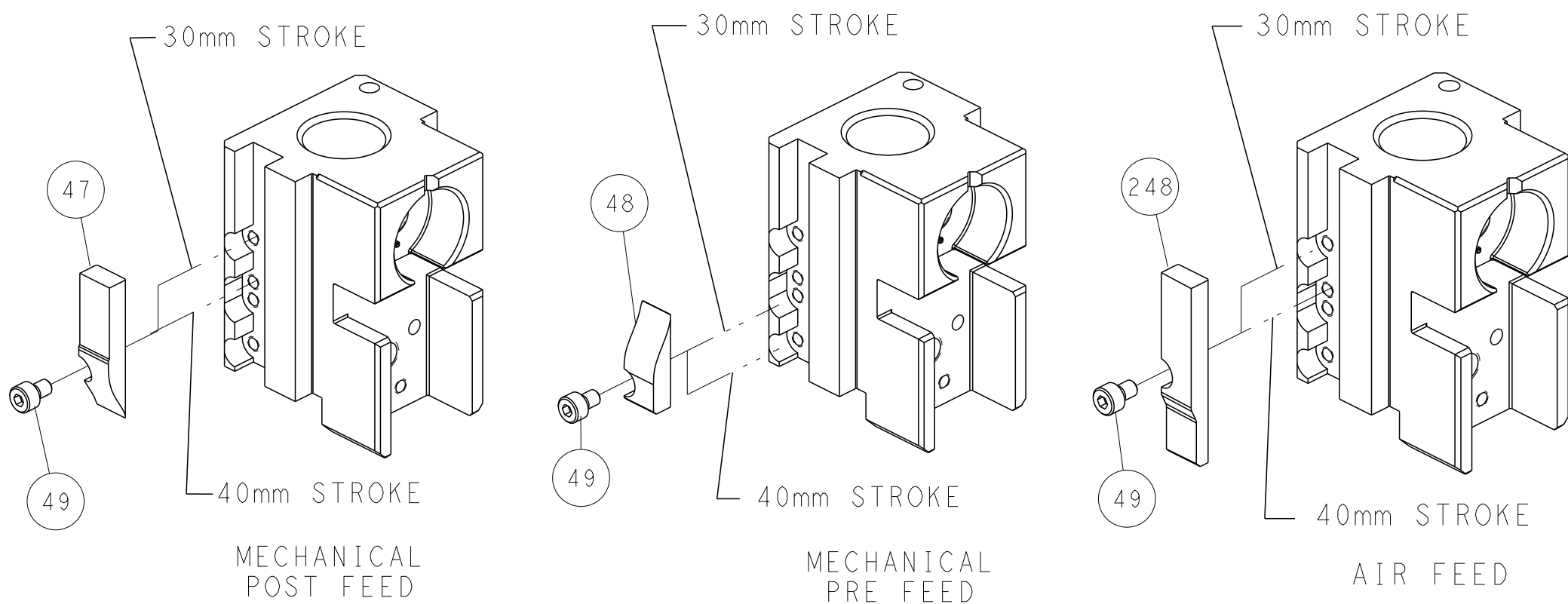
PNEUMATIC



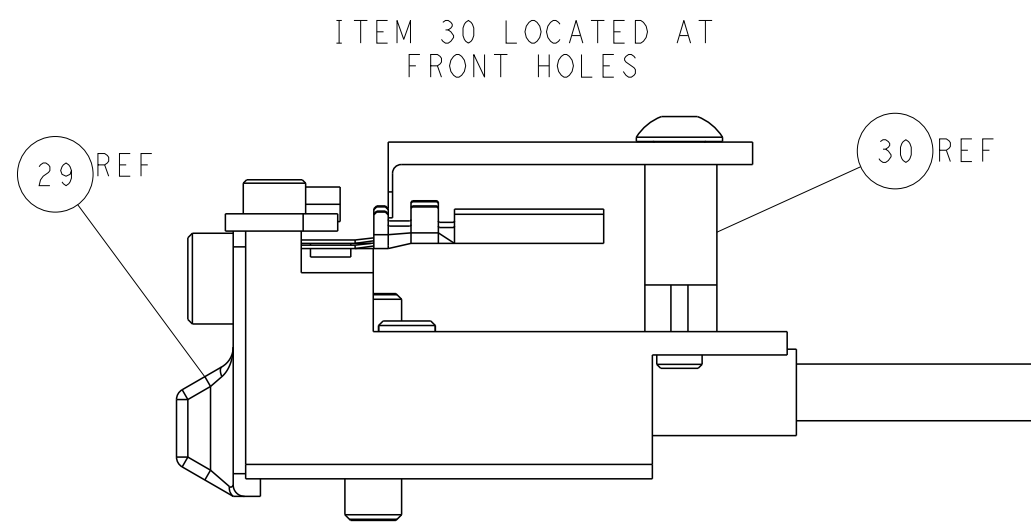
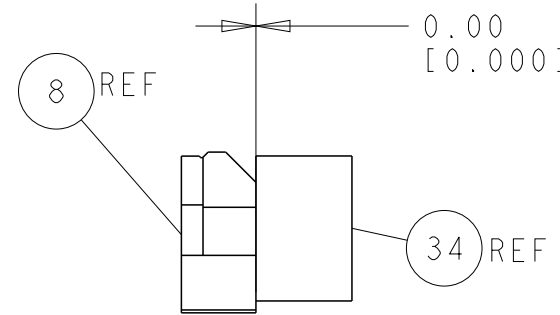
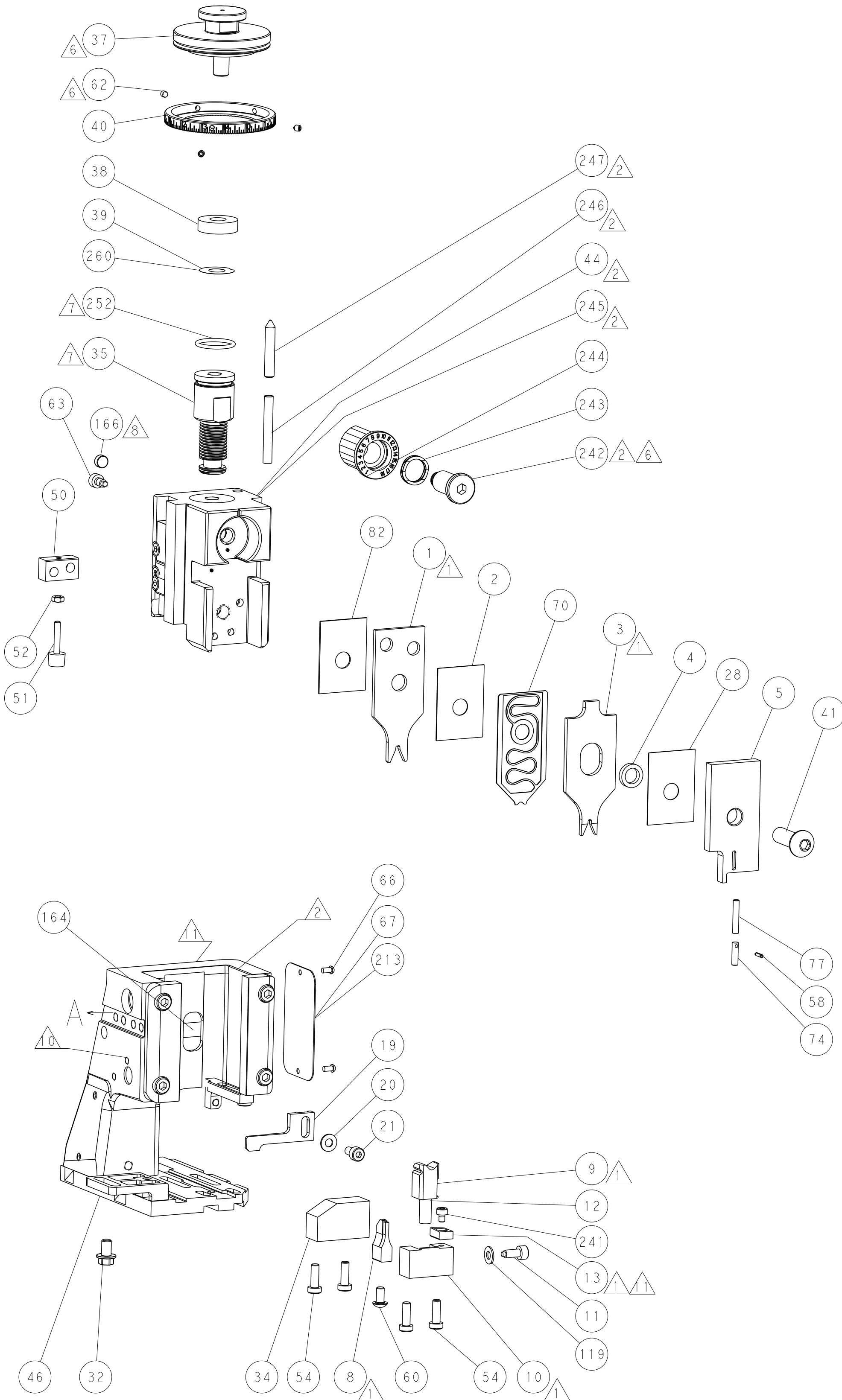
SERVO  
LATCH PLATE



CAM POSITIONS



ATLANTIC VERSION  
Shown on sheets 1 of 4 & 2 of 4  
(Pacific version shown on sheets 3 of 4 & 4 of 4)



|  |  |  |  |                            |  |  |  |                           |  |  |  |
|--|--|--|--|----------------------------|--|--|--|---------------------------|--|--|--|
| THIS DRAWING IS UNPUBLISHED. IT IS SUBJECT TO CHANGE WITHOUT NOTICE. IT IS SUBJECT TO CHANGE WITHOUT NOTICE. IT IS SUBJECT TO CHANGE WITHOUT NOTICE. |  |  |  | DWN R. KNEPPER 04-Oct-13   |  |  |  | TE Connectivity           |  |  |  |
| CHK G. BAILEY 04-Oct-13  |  |  |  | APVD M. CLIFFORD 04-Oct-13 |  |  |  | Harrisburg, PA 17105-3608 |  |  |  |
| PRODUCT SPEC   |  |  |  | NAME                       |  |  |  | Ocean Side Feed           |  |  |  |
| APPLICATION SPEC   |  |  |  | SIZE                       |  |  |  | A1                        |  |  |  |
| MATERIAL   |  |  |  | WEIGHT                     |  |  |  | 00779                     |  |  |  |
| FINISH   |  |  |  | SCALE                      |  |  |  | 1:2                       |  |  |  |
| Customer Accessible Production Drawing   |  |  |  | SHEET                      |  |  |  | 2 of 4                    |  |  |  |
|  |  |  |  | REV                        |  |  |  | B2                        |  |  |  |

8

7

6

5

4

3

2

1

THIS DRAWING IS UNPUBLISHED.

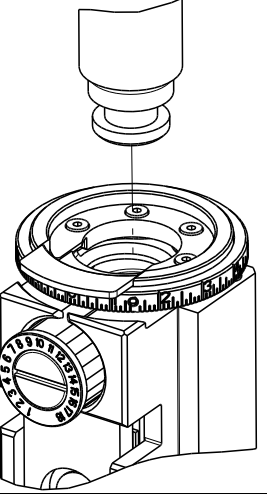
RELEASED FOR PUBLICATION

20

© COPYRIGHT 20

BY TYCO ELECTRONICS CORPORATION. ALL RIGHTS RESERVED.

PACIFIC VERSION  
TERMINATOR  
INTERFACE ADAPTER



PART  
NUMBER

2-2266103-1

REVISION

B

DESCRIPTION

FINE CRIMP HEIGHT ADJUST

FEED TYPE

MECHANICAL

2-2266103-2

B

FINE CRIMP HEIGHT ADJUST

PNEUMATIC

2-2266103-5

B

FINE CRIMP HEIGHT ADJUST

SERVO LATCH PLATE

2-2266103-7

B

FINE CRIMP HEIGHT ADJUST

NONE

7-2266103-7

A

CRIMP TOOLING KIT

-

7-2266103-8

B

APPLICATOR CONVERSION KIT

-

APPLICATOR DATA

|       |                  |      |
|-------|------------------|------|
| CRIMP | SIZE             | TYPE |
| WIRE  | 2.29 mm [ .090 ] | F    |
| INSUL | 2.03 mm [ .080 ] | O    |

APPLICATOR INSTRUCTIONS  
408-10389

APPLICATOR CONVERSION KITS

|             |                             |
|-------------|-----------------------------|
| PART NUMBER | INSULATION DIAMETER RANGE   |
| 7-2266100-8 | Ø 3.05-3.81mm [ .120-.150 ] |
| 7-2266101-8 | Ø 2.67-3.18mm [ .105-.125 ] |
| 7-2266102-8 | Ø 2.16-2.82mm [ .085-.111 ] |
| 7-2266103-8 | Ø 1.91-2.67mm [ .075-.105 ] |
| 7-2266104-8 | Ø 1.60-2.39mm [ .063-.094 ] |

TERMINAL DATA: DEUTSCH TERMINAL      TE CRIMP SPECIFICATION

TERMINAL NAME: STAMPED CONTACT PIN SIZE 16

|  |  |
|--|--|
| WIRE STRIP LENGTH<br>3.81-5.09 mm [ .150-.200 IN ] | INSULATION DIAMETER RANGE<br>Ø 1.91-2.67 mm [ .075-.105 IN ] |
|--|--|

TERMINAL APPLICATION SPECIFICATION

114-151000

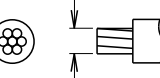
-

-


TERMINALS APPLIED

|             |                  |             |                  |
|-------------|------------------|-------------|------------------|
| TE TERMINAL | DEUTSCH TERMINAL | TE TERMINAL | DEUTSCH TERMINAL |
| 286503-1    | 1060-16-0122     | 286503-2    | 1060-16-0144     |
| 286503-3    | 1060-16-0177     | 286503-7    | 1060-16-0722     |
| 286503-8    | 1060-16-0744     | 286503-9    | 1060-16-0777     |
| 1-286503-1  | 1060-16-0977     | 1-286503-2  | 1060-16-0988     |

WIRE SIZE



CRIMP HEIGHT  
mm [ INCH ]



CRIMP HEIGHT  
REFERENCE SETTING

|         |                                       |     |
|---------|---------------------------------------|-----|
| 14 AWG  | 1.40+0.03/-0.05 [ .055+ .001/- .002 ] | 4.6 |
| 2.00mm2 | 1.40+0.03/-0.05 [ .055+ .001/- .002 ] | 4.6 |
| 1.50mm2 | 1.35+0.03/-0.05 [ .053+ .001/- .002 ] | 5.2 |
| 16 AWG  | 1.27+0.03/-0.05 [ .050+ .001/- .002 ] | 6.0 |
| 1.00mm2 | 1.27+0.03/-0.05 [ .050+ .001/- .002 ] | 6.0 |
| 18 AWG  | 1.24+0.03/-0.05 [ .049+ .001/- .002 ] | 6.2 |
| 0.75mm2 | 1.22+0.03/-0.05 [ .048+ .001/- .002 ] | 6.4 |

RECOMMENDED SPARE PARTS

GREASE BEARING SURFACES LIGHTLY

LUBRICATE DAILY PER THE APPLICATOR INSTRUCTION SHEET SUPPLIED WITH THE APPLICATOR.

APPLICATOR SPECIFIC DATA TO BE ENTERED INTO BLANK MEMORY CHIP AT ASSEMBLY. SEE BELOW FOR PART NUMBER:  
MECHANICAL FEED WITH "SMART APPLICATOR" CONVERSION: 8-2266103-4  
PNEUMATIC FEED WITH "SMART APPLICATOR" CONVERSION: 8-2266103-4  
SERVO FEED WITH "FINE CRIMP HEIGHT ADJUST": 8-2266103-5

ADJUSTMENT OF THE STRIPPER MAY BE REQUIRED WHEN MOVING THE APPLICATOR BETWEEN BENCH AND LEADMAKER APPLICATIONS.

APPLY PART NUMBER 1-23419-5 LOCTITE TO THREADS OF ITEMS 62 & 242.

GREASE THREADS, GROOVE AND O-RING ON ITEMS 139 & 152.

MAGNET MUST BE ORIENTED CORRECTLY IN ORDER TO PROPERLY ACTUATE THE COUNTER.

CRIMP HEIGHT REFERENCE SETTING WAS THE SETTING USED WHEN THE APPLICATOR WAS QUALIFIED AT THE FACTORY. ADJUSTMENT MAY BE NECESSARY WHEN RUNNING APPLICATOR IN THE FIELD.

SPARE FEED CAM STORAGE LOCATION REFER TO INSTRUCTION SHEET FOR ADDITIONAL INFORMATION.

TO CONVERT THE APPLICATOR TO A NON-CARRIER CUTTING STYLE, REMOVE ITEM 13 AND ATTACH TO THE LOCATION ON BACK SIDE OF THE HOUSING. REFER TO INSTRUCTION SHEET FOR ADDITIONAL INFORMATION.

SEE APPROPRIATE APPLICATOR LOG SHEETS FOR APPLIED TERMINALS, WIRE RANGE AND MEMORY CHIP.

APPLICATOR STYLE CONVERSION CHART

| CONVERT TO        | PART NUMBERS REQUIRED |           |             |           |           |                        |
|-------------------|-----------------------|-----------|-------------|-----------|-----------|------------------------|
| PNEUMATIC FEED    | 2119950-1             | 1338685-1 | 5-18022-5   | 2119641-2 | 2119799-1 | 2063440-1              |
| SERVO LATCH PLATE | 2119951-1             | -         | 8-2266103-5 | 1901094-3 | -         | 2168400-6 (QUANTITY 2) |
| SMART APPLICATOR  | 2161326-1             | -         | 8-2266103-4 | -         | -         | -                      |
| MECHANICAL FEED   | 2119949-1             | 1338685-1 | 5-18022-5   | 2119653-2 | -         | -                      |
| SERVO LATCH PLATE | 2119951-1             | -         | 8-2266103-5 | 1901094-3 | -         | 2168400-6 (QUANTITY 2) |
| SMART APPLICATOR  | 2161326-1             | -         | 8-2266103-4 | -         | -         | -                      |
| MECHANICAL FEED   | 2119949-1             | 1338685-1 | 5-18022-5   | 2119653-2 | -         | -                      |
| PNEUMATIC FEED    | 2119950-1             | 1338685-1 | 5-18022-5   | 2119641-2 | 2119799-1 | 2063440-1              |
| -                 | -                     | -         | -           | -         | -         | -                      |
| -                 | -                     | -         | -           | -         | -         | -                      |

TERMINAL DATA: DEUTSCH TERMINAL      TE CRIMP SPECIFICATION

TERMINAL NAME: STAMPED CONTACT SOCKET SIZE 16

|  |  |
|--|--|
| WIRE STRIP LENGTH<br>3.81-5.09 mm [ .150-.200 IN ] | INSULATION DIAMETER RANGE<br>Ø 1.91-2.67 mm [ .075-.105 IN ] |
|--|--|

TERMINAL APPLICATION SPECIFICATION

114-151000

-

-

TERMINALS APPLIED

|             |                  |             |                  |
|-------------|------------------|-------------|------------------|
| TE TERMINAL | DEUTSCH TERMINAL | TE TERMINAL | DEUTSCH TERMINAL |
| 286504-1    | 1062-16-0122     | 286504-2    | 1062-16-0144     |
| 286504-3    | 1062-16-0177     | 286504-7    | 1062-16-0722     |
| 286504-8    | 1062-16-0744     | 286504-9    | 1062-16-0777     |
| 1-286504-1  | 1062-16-0977     | 1-286504-2  | 1062-16-0988     |

\*WARNING

ON INSTALLATION, SET WIRE DISC, ITEM 40 TO LARGEST WIRE SIZE SETTING. USE OF SETTINGS BELOW MINIMUM REQUIRED CRIMP HEIGHT SETTING WILL CAUSE DAMAGE TO CRIMP TOOLING.

-

-

1

1

1

1

2119782-1

FINE ADJUST HEAD ASM, PACIFIC STYLE

251

-

-

-

-

1

-

2119640-1

PUSH ROD, AIR FEED

250

-

-

-

-

1

-

2079988-1

BUSHING, LCH5-12, MISUMI

249

-

-

1

1

1

1

1-22279-3

SPRING, COMPRESSION

246

-

-

1

1

1

1

2119082-9

CAM, SNAIL, INSULATION ADJUSTMENT

244

| -78 | -77 | -27 | -25 | -22 | -21 | PART NO | DESCRIPTION | ITEM NO |

PACIFIC VERSION

Shown on sheets 3 of 4 & 4 of 4

(Atlantic version shown on sheets 1 of 4 & 2 of 4)

SET UP GAUGE  
2119599-1

LOC  
A

DIST  
66

P

LTR

DESCRIPTION

DATE

OWN

APVD

-

-

SEE SHEET 1

-

-

-

-

-

1

1

1

1

2079764-1

WASHER, WAVE SPRING, CREST-TO-CREST

243

-

-

1

1

1

1

2119083-1

RETAINER, INSULATION DIAL

242

-

-

1

1

1

1

7-18023-7

SCR, SKT HD CAP M3 X 4.0

241

-

-

-

2

-

-

2168400-6

SHCS, LOW HEAD, RoHS, M5 X 16

240

-

-

-

-

-

1

2119580-1

MECHANICAL FEED ASSEMBLY

239

-

-

-

-

1

-

2063440-1

AIR FEED MODULE

238

-

-

-

1

-

-

2119740-2

TAG,IDENTIFICATION

213

-

-

-

1

-

-

1901094-3

SPACER, FEEDER

198

-

-

-

-

2

-

21045-3

RING, RETAIN, EXTERN, 3/16 CRESCENT

172

-

-

1

1

1

1

994969-1

MAGNET, RARE EARTH HIGH ENERGY

166

-

-

REF

REF

REF

REF

994970-2

COUNTER, MAGNETIC

164

-

-

-

-

1

-

240638-1

SPRING, FEED FINGER

163

-

-

1

1

1

1

8-21084-1

O-RING, .801 ID, .070 DIA. MAT.

152

-

-

-

-

1

-

2119641-2

FEED CAM, AIR FEED

151

-

-

1

1

1

1

2119798-2

DETENT PIN

145

-

-

1

1

1

1

2079383-8

SCR, BHSC, RoHS (M4 X 16)

144

-

-

4

4

4

4

2168400-5

SHCS, LOW HEAD, RoHS, M4 X 20

143

-

-

-

-

-

1

2119653-2

FEED CAM, POST FEED

142

-

-

1

1

1

1

1-2119656-0

APPLICATOR BASIC ASSEMBLY, SF

141

-

-

1

1

1

1

2119650-1

RAM, ASIAN STYLE, SIDE FEED

140

-

-

1

1

1

1

2119092-2

BOLT, ADJUSTMENT

139

-

-

-

-

1

-

3-23627-7

PIN, RETAIN, GRVD, 3/16 X .854

137

-

-

-

-

1

-

2119799-1

HOLDER,FEED FINGER, AF

136

-

-

-

REF

-

-

SEE NOTE 4

MEMORY CHIP, PROGRAMMED

135

-

-

-

1

-

-

1633743-1

SERVO FEED LATCH ASM

133

-

-

1

1

1

1

1-18028-2

WASHER, FLAT, REG M4

119

-

-

-

REF

-

-

2119944-1

FEED FINGER ASSEMBLY,SF

117

1

-

1

1

1

1

455888-7

SPACER, CRIMPER

82

-

-

1

1

1

1

22278-8

SPRING, COMPRESSION

77

-

-

1

1

1

1

854769-4

HOLDER, INS

74

1

-

-

-

-

-

2266103

PRINT, APPLICATOR LOG SHEET

72

-

-

1

1

1

1

2119956-1

DOCUMENTATION PACKAGE

71

-

-

1

1

1

1

2119791-9

DEPRESSOR, WIRE

70

-

-

1

-

1

1

2119740-1

TAG,IDENTIFICATION

67

-

-

2

2

2

2

2168078-1

SCREW, DRIVE, RH, RoHS, 2 x .188

66

-

-

1

1

1

1

2119793-1

LIMITER, ADJUSTMENT BOLT

63

-

-

3

3

3

3

992763-5

SCR, SET, SOC, CONE POINT, M3 x 4.0

62

-

-

-

-

1

1

5-18022-5

SCR, HEX HD CAP, M4 X 6.0

59

-

-

1

1

1

1

21028-2

PIN, SLOTTED SPRING .062 X .250

58

-

-

-

-

1

1

1338685-1

PAWL, FEED

56

-

-

2

2

2

2

1-2168083-0

SCR, SKT HD CAP, RoHS, M4 X 10

53

-

-

1

1

1

1

5018030-1

NUT, HEX, REG, RoHS, M3

52

-

-

1

1

1

1

811242-5

BUMPER, HOLD DOWN

51

-

-

1

1

1

1

690753-2

SPACER, TONKER

50

-

-

-

-

1

2

18023-9

SCR, SKT HD CAP M4 X 6.0

49

-

-

-

-

-

1

2119652-1

FEED CAM, PRE FEED

48

-

-

1

1

1

1

2079383-7

SCR, BHSC, RoHS (M8 X 25)

41

-

-

1

1

1

1

2119645-1

DISC, NUMBERED FA WIRE ADJUSTMENT

40

-

-

1

1

1

1

2119957-1

APPLICATOR SHIM PACK

39

-

-

1

1

1

1

2119644-1

RAM WASHER, PRECISION

38

-

-

1

1

1

1

2-1752356-0

SUPPORT, TERMINAL

34

-

-

2

2

2

2

2079383-5

SCR, BHSC, RoHS (M4 X 20)

33

-

-

1

1

1

1

2161328-1

HEX HEAD, FLANGED, M5 x 8mm LONG

32

-

-

1

1

1

1

1-1320908-0

SPACER, STRIP GUIDE

30

-

-

1

1

1

1

2119959-1

ASSEMBLY, STRIP GUIDE

29

-

-

1

1

1

1

455888-3

SPACER, CRIMPER

28

-

-

1

1

1

1

1320928-2

STRIP GUIDE

24

-

-

1

1

1

1

2168083-2

SCR, SKT HD CAP, RoHS, M4 X 8.0

21

-

-

1

1

1

1

1-18028-2

WASHER, FLAT, REG M4

20

-

-

1

1

1

1

2119533-1

STRIPPER, SIDE FEED

19

-

-

1

1

1

1

2119806-1

INSERT, SHEAR

13

-

-

1

1

1

1

3-22280-3

SPRING, COMPRESSION

12

-

-

1

1

1

1

1-356885-4

STOP, SHEAR

11

-

-

1

1

1

1

2119805-1

SHEAR HOLDER, FRONT

10

-

-

1

1

1

1

1803095-1

FLOATING SHEAR, FRONT

9

1

1

1

1

1

1

1803054-4

ANVIL, COMBINATION

8

-

-

-

-

-

-

-

-

7

-

-

-

-

-

-

-

-

6

-

-

1

1

1

1

2119780-9

DEPRESSOR, SHEAR

5

-

-

1

1

1

1

238011-9

BLOCK, CRIMPER SPACER

4

1

1

1

1

1

1

1803019-6

CRIMPER, INSULATION O

3

1

-

1

1

1

1

455888-4

SPACER, CRIMPER

2

-

1

1

1

1

1

2-1633713-6

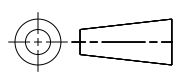
CRIMPER, WIRE PREMIUM

1

| -78 | -77 | -27 | -25 | -22 | -21 | PART NO | DESCRIPTION | ITEM NO |

THIS IS SUBJECT TO CHANGE WITHOUT NOTICE AND WITHOUT OBLIGATION. THE USER SHALL BE CONTACTED FOR THE LATEST EDITION.

DIMENSIONS:  
mm



TOLERANCES UNLESS OTHERWISE SPECIFIED:  
0 PLC ±.5  
1 PLC ±0.13  
2 PLC ±0.13  
3 PLC ±0.13  
4 PLC ±0.0001  
ANGLES ±.5°  
FINISH

-

MATERIAL

-

OWN  
R.KNEPPER 04-Oct-13

CHK  
G.BAILEY 04-Oct-13

APVD  
M.CLIFFORD 04-Oct-13

PRODUCT SPEC

APPLICATION SPEC

WEIGHT

-

NAME

Ocean Side Feed  
Applicator

SIZE

CAGE CODE

DRAWING NO

00779

©=2266103

RESTRICTED TO

-

Customer Accessible Production Drawing

SCALE

1:2

SHEET

3

OF

4

REV

B2

SHEETS 1 & 2 ARE NOT REQUIRED FOR PACIFIC VERSION

| LOC |  | DIST | REVISIONS |     |             |      |     |      |
|-----|--|------|-----------|-----|-------------|------|-----|------|
| A   |  | 66   | P         | LTR | DESCRIPTION | DATE | DWN | APVD |
|     |  |      |           | -   | SEE SHEET 1 | -    | -   | -    |
|     |  |      |           |     |             |      |     |      |
|     |  |      |           |     |             |      |     |      |
|     |  |      |           |     |             |      |     |      |
|     |  |      |           |     |             |      |     |      |

D

C

B

A

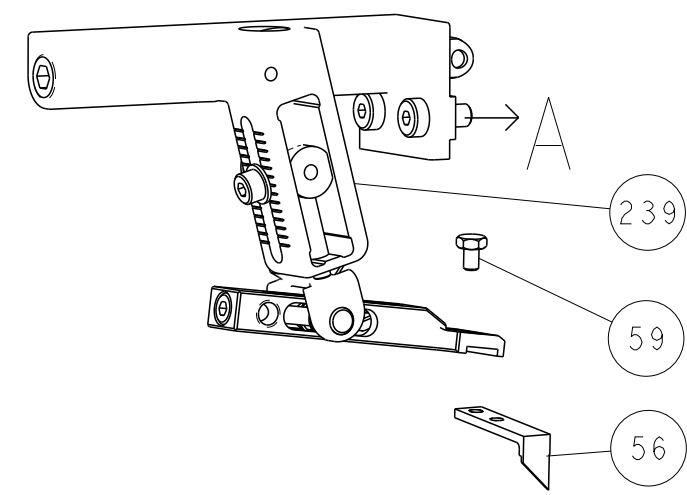
D

C

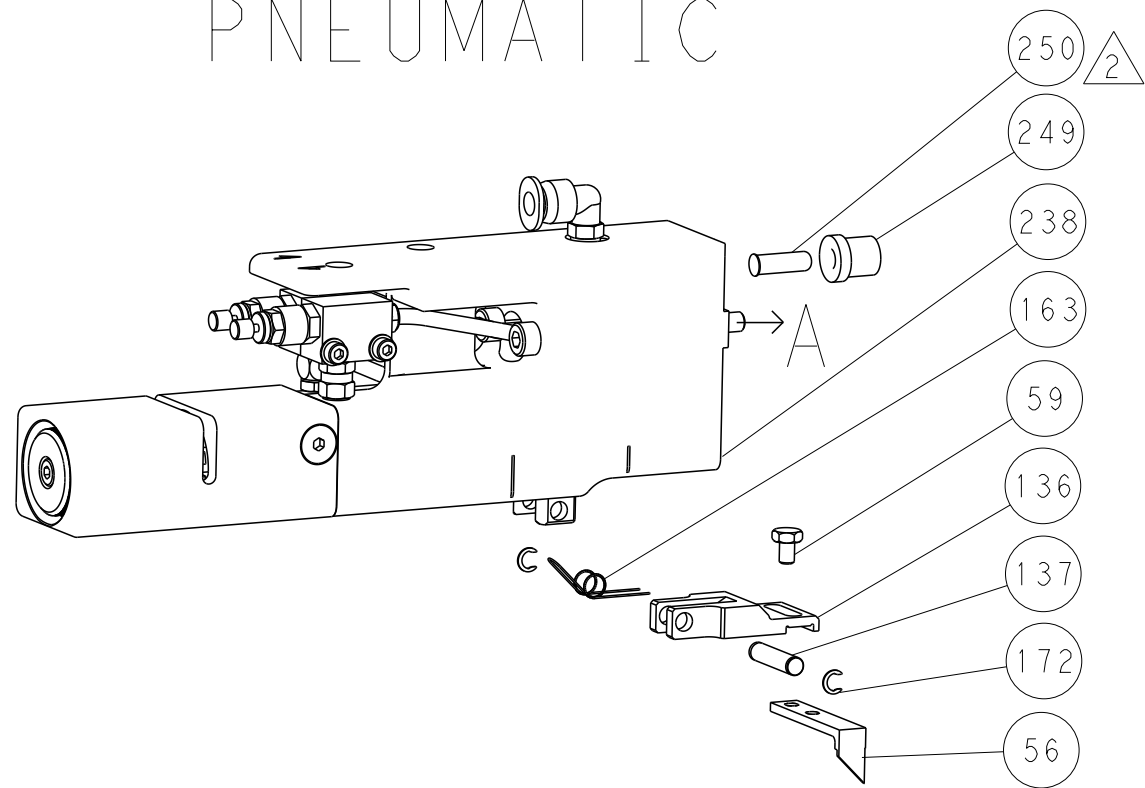
B

A

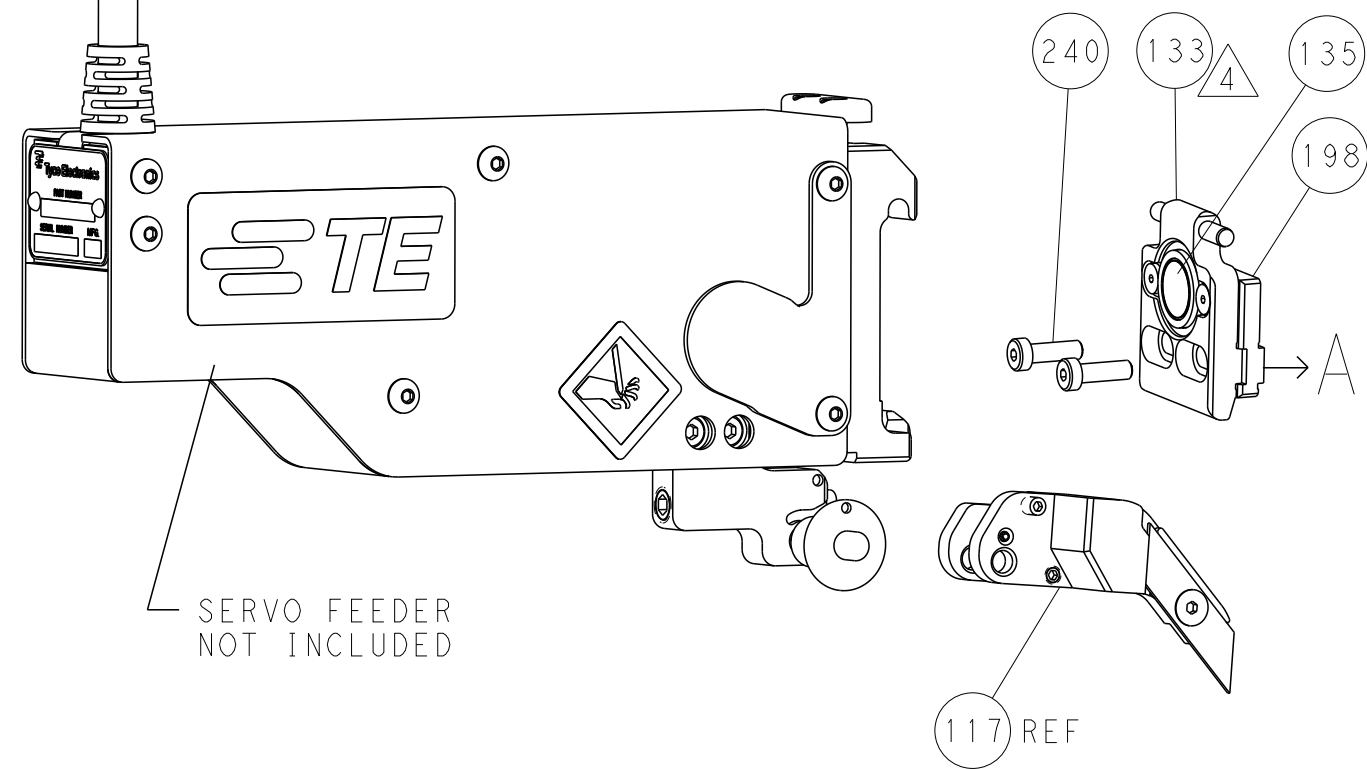
# FEED TYPE MECHANICAL



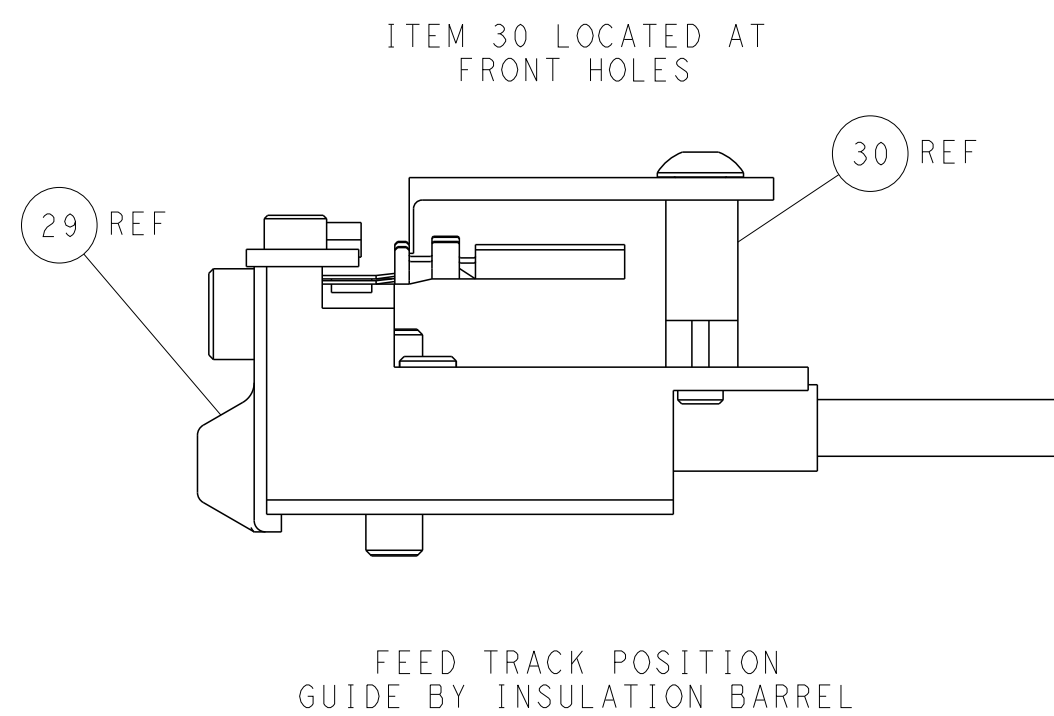
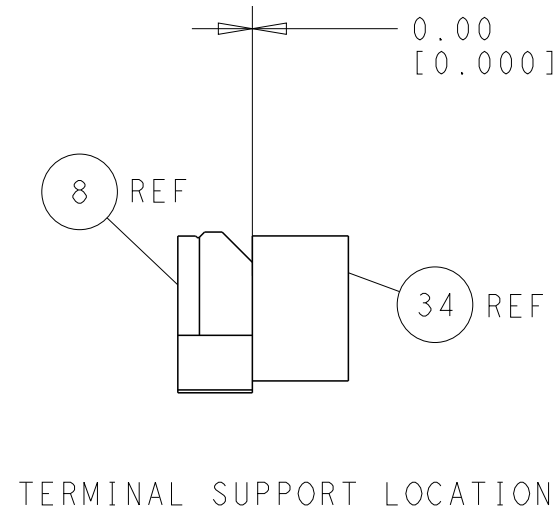
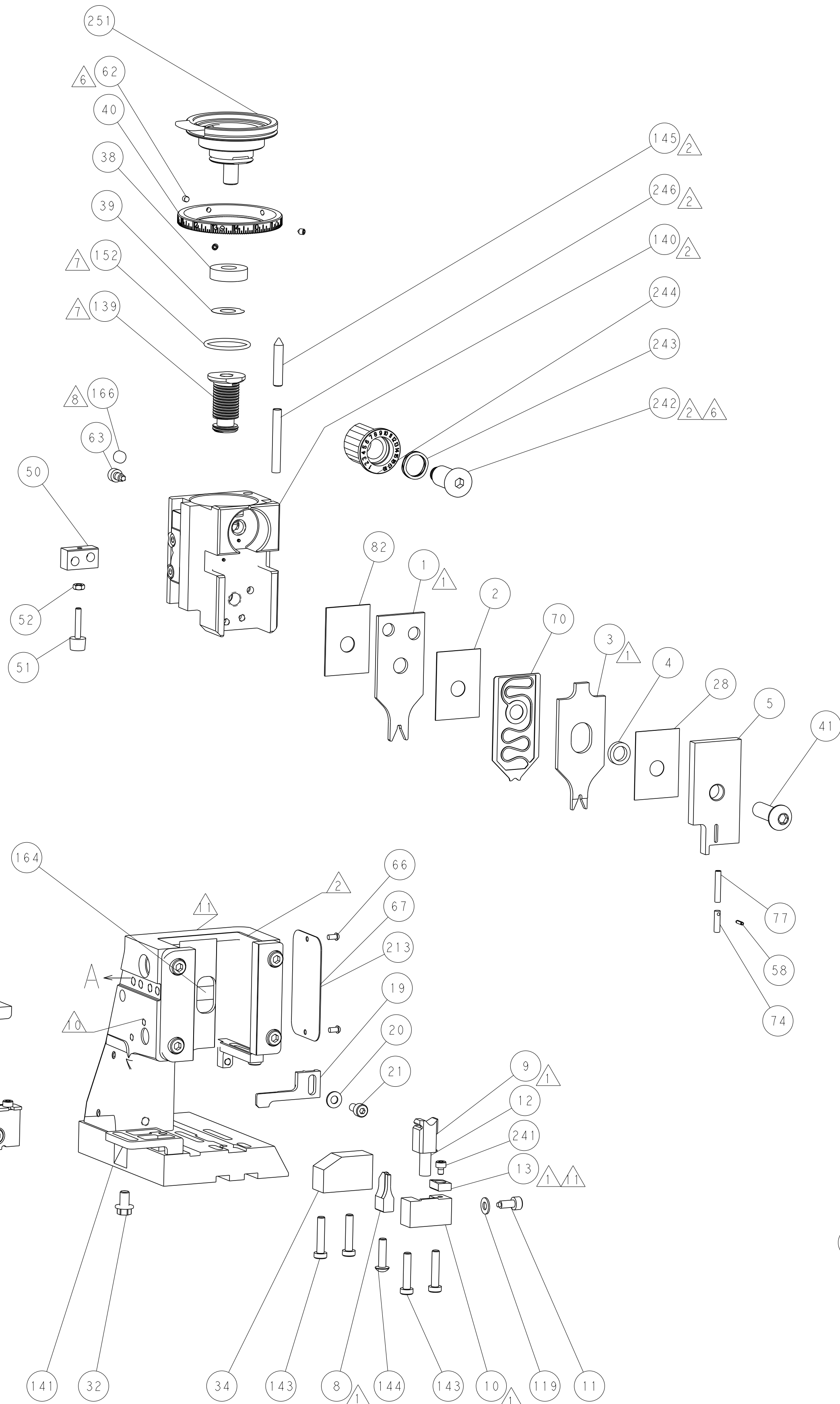
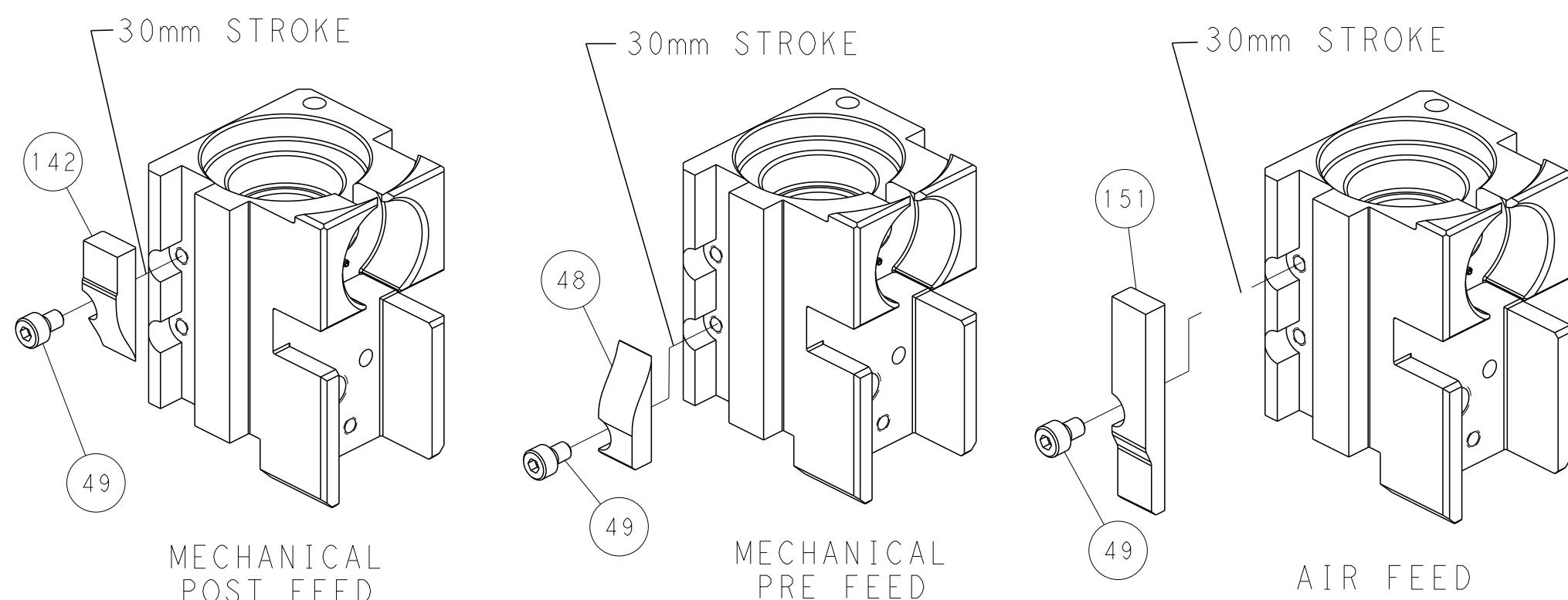
# PNEUMATIC



# SERVO LATCH PLATE



# CAM POSITIONS



PACIFIC VERSION  
Shown on sheets 3 of 4 & 4 of 4  
(Atlantic version shown on sheets 1 of 4 & 2 of 4)

|  |  |  |  |  |
|--|--|--|--|--|
| THIS DRAWING IS UNPUBLISHED. IT IS SUBJECT TO CHANGE WITHOUT NOTICE. THE USER SHALL BE RESPONSIBLE FOR VERIFYING THE LATEST REVISIONS OF THIS DRAWING. |  | DWN<br>R. KNEPPER<br>04-Oct-13         | TE Connectivity<br>Harrisburg, PA 17105-3608 |  |
| DIMENSIONS:<br>mm  |  | CHK<br>G. BAILEY<br>04-Oct-13          | NAME<br>Ocean Side Feed<br>Applicator        |  |
| TOLERANCES UNLESS OTHERWISE SPECIFIED:<br>0 PLC ±.5<br>1 PLC ±.13<br>2 PLC ±.13<br>3 PLC ±.013<br>4 PLC ±.0001<br>ANGLES FINISH                        |  | APVD<br>M. CLIFFORD<br>04-Oct-13       | SIZE<br>A1                                   |  |
| MATERIAL   |  | PRODUCT SPEC                           | CAGE CODE<br>00779                           |  |
|  |  | APPLICATION SPEC                       | DRAWING NO<br>C=2266103                      |  |
|  |  | WEIGHT                                 | RESTRICTED TO                                |  |
|  |  | Customer Accessible Production Drawing | SCALE<br>1:2                                 |  |
|  |  |  | SHEET<br>4                                   |  |
|  |  |  | OF<br>4                                      |  |
|  |  |  | REV<br>B2                                    |  |

SHEETS 1 & 2 ARE NOT REQUIRED FOR PACIFIC VERSION