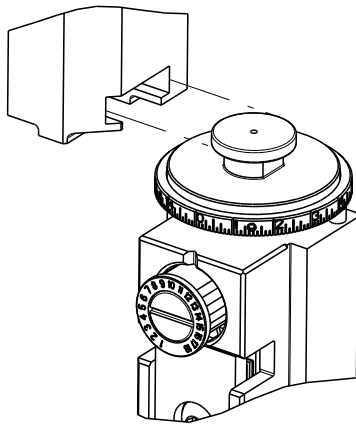
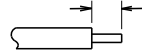



8		7		6	
THIS DRAWING IS UNPUBLISHED.		RELEASED FOR PUBLICATION		20	
© COPYRIGHT 20		BY TYCO ELECTRONICS CORPORATION. ALL RIGHTS RESERVED.			
ATLANTIC VERSION TERMINATOR INTERFACE ADAPTER		PART NUMBER	REVISION	DESCRIPTION	FEED TYPE
	2266101-1	A	FINE CRIMP HEIGHT ADJUST	MECHANICAL	PI SER SM ME SER SM ME PI
	2266101-2	A	FINE CRIMP HEIGHT ADJUST	PNEUMATIC	
	2266101-5	A	FINE CRIMP HEIGHT ADJUST	SERVO LATCH PLATE	ME PI
	2266101-6	A	NON-CRIMP HEIGHT ADJUST	SERVO LATCH PLATE	
	2266101-7	A	FINE CRIMP HEIGHT ADJUST	NONE	
	7-2266101-7	A	CRIMP TOOLING KIT	-	
	7-2266101-8	A	APPLICATOR CONVERSION KIT	-	

APPLICATOR DATA		
CRIMP	SIZE	TYPE
WIRE	2.29 mm [.090]	F
INSUL	2.79 mm [.110]	O
APPLICATOR INSTRUCTIONS 408-10389		

TERMINAL DATA: DEUTSCH TERMINAL		TE CRIMP SPECIFICATION	
TERMINAL NAME: STAMPED CONTACT PIN SIZE 16			
WIRE STRIP LENGTH 3.81-5.09 mm [.150-.200 IN]			INSULATION DIAMETER RANGE Ø2.67-3.18 mm [.105-.125 IN]
114-151000		-	-
TERMINAL APPLICATION 	-		
SPECIFICATION	-		
TERMINALS APPLIED			
TE TERMINAL	DEUTSCH TERMINAL	TE TERMINAL	DEUTSCH TERMINAL
286505-1	1060-14-0122	286505-2	1060-14-0144
286505-3	1060-14-0177	285505-5	1060-14-1077
286505-6	1060-14-1088	286503-1	1060-16-0122
286503-2	1060-16-0144	286503-3	1062-16-0177
286503-7	1060-16-0722	286503-8	1060-16-0744
286503-9	1060-16-0777	1-286503-1	1060-16-0977
1-286503-2	1060-16-0988		

WIRE SIZE	CRIMP HEIGHT mm [INCH]	CRIMP HEIGHT REFERENCE SETTING
14 AWG	1.40+0.03/-0.05 [.055+.001/- .002]	5.2
2.00mm2	1.40+0.03/-0.05 [.055+.001/- .002]	5.4
1.50mm2	1.35+0.03/-0.05 [.053+.001/- .002]	5.7
16 AWG	1.27+0.03/-0.05 [.050+.001/- .002]	6.5
1.00mm2	1.27+0.03/-0.05 [.050+.001/- .002]	6.6
18 AWG	1.24+0.03/-0.05 [.049+.001/- .002]	6.9
0.75mm2	1.22+0.03/-0.05 [.048+.001/- .002]	7.1

RECOMMENDED SPARE PARTS	
GREASE BEARING SURFACES LIGHTLY	
3. LUBRICATE DAILY PER THE APPLICATOR INSTRUCTION SHEET SUPPLIED WITH THE APPLICATOR.	
APPLICATOR SPECIFIC DATA TO BE ENTERED INTO BLANK MEMORY CHIP AT ASSEMBLY. SEE BELOW FOR PART NUMBER: MECHANICAL FEED WITH "SMART APPLICATOR" CONVERSION: 8-2266101-4 PNEUMATIC FEED WITH "SMART APPLICATOR" CONVERSION: 8-2266101-4 SERVO FEED WITH "FINE CRIMP HEIGHT ADJUST": 8-2266101-5 SERVO FEED WITH "NON-CRIMP HEIGHT ADJUST": 8-2266101-6	
5. ADJUSTMENT OF THE STRIPPER MAY BE REQUIRED WHEN MOVING THE APPLICATOR BETWEEN BENCH AND LEADMAKER APPLICATIONS.	
APPLY PART NUMBER 1-23419-5 LOCTITE TO THREADS OF ITEMS 62 & 242. FOR -6 ONLY APPLY PART NUMBER 1-23419-5 LOCTITE TO THREADS OF ITEMS 37 & 242.	
GREASE THREADS, GROOVE AND O-RING ON ITEMS 35 & 252.	
MAGNET, ITEM 166 MUST BE ORIENTED CORRECTLY IN ORDER TO PROPERLY ACTUATE THE COUNTER.	
CRIMP HEIGHT REFERENCE SETTING WAS THE SETTING USED WHEN THE APPLICATOR WAS QUALIFIED AT THE FACTORY. ADJUSTMENT MAY BE NECESSARY WHEN RUNNING APPLICATOR IN THE FIELD.	
SPARE FEED CAM STORAGE LOCATION REFER TO INSTRUCTION SHEET FOR ADDITIONAL INFORMATION.	
TO CONVERT THE APPLICATOR TO A NON-CARRIER CUTTING STYLE, REMOVE ITEM 13 AND ATTACH TO THE LOCATION ON THE BACK SIDE OF THE HOUSING. REFER TO INSTRUCTION SHEET FOR ADDITIONAL INFORMATION.	
WHEN ASSEMBLING A NON CRIMP HEIGHT ADJUST APPLICATOR (-6) USE SHIMS FROM ITEM 260 TO ACHIEVE A NOMINAL SHIM HEIGHT OF 4.40.	
SEE APPROPRIATE APPLICATOR LOG SHEETS FOR APPLIED TERMINALS, WIRE RANGE AND MEMORY CHIP.	

AMP 4805 REV 31MAR2000

TERMINAL DATA: DEUTSCH TERMINAL		TE CRIMP SPECIFICATION	
TERMINAL NAME: STAMPED CONTACT SOCKET SIZE 16			
WIRE STRIP LENGTH 3.81-5.09 mm [.150-.200 IN]		INSULATION DIAMETER RANGE Ø2.67-3.18 mm [.105-.125 IN]	
TERMINAL APPLICATION SPECIFICATION			
114-151000			
TERMINALS APPLIED			
TE TERMINAL	DEUTSCH TERMINAL	TE TERMINAL	DEUTSCH TERMINAL
286506-1	1062-14-0122	286506-2	1062-14-0144
286506-3	1062-14-0177	286506-7	AT62-14-0122
286506-5	1062-14-1077	286506-6	1062-14-1088
286504-1	1062-16-0122	286504-2	1062-16-0144
286504-3	1062-16-0177	286504-7	1062-16-0722
286504-8	1062-16-0744	286504-9	1062-16-0777
1-286504-1	1062-16-0977	1-286504-2	1062-16-0988

\*WARNING  
ON INSTALLATION, SET WIRE DISC, ITEM 40 TO LARGEST WIRE SIZE SETTING. USE OF SETTINGS BELOW MINIMUM REQUIRED CRIMP HEIGHT SETTING WILL CAUSE DAMAGE TO CRIMP TOOLING.

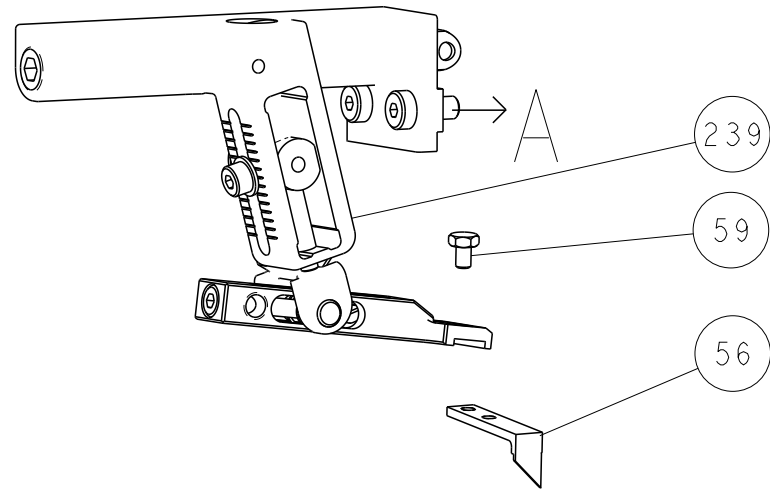
-	-	-	1	-	-	-	2119957-2	APPLICATOR SHIM PACK	260
-	-	1	-	1	1	1	8-21084-0	O-RING, .676 ID, .070 DIA. MAT.	252
-	-	-	-	-	1	-	2119640-1	PUSH ROD, AIR FEED	250
-	-	-	-	-	1	-	2079988-1	BUSHING, LCH5-12, MISUMI	249
-	-	-	-	-	1	-	2119641-1	FEED CAM, AIR FEED	248
-	-	1	-	1	1	1	2119798-1	DETENT PIN	247
-	-	1	-	1	1	1	1-22279-3	SPRING, COMPRESSION	246
-78	-77	-7	-6	-5	-2	-1	PART NO	DESCRIPTION	ITEM NO

ATLANTIC VERSION  
Shown on sheets 1 of 4 & 2 of 4  
(Pacific version shown on sheets 3 of 4 & 4 of 4)

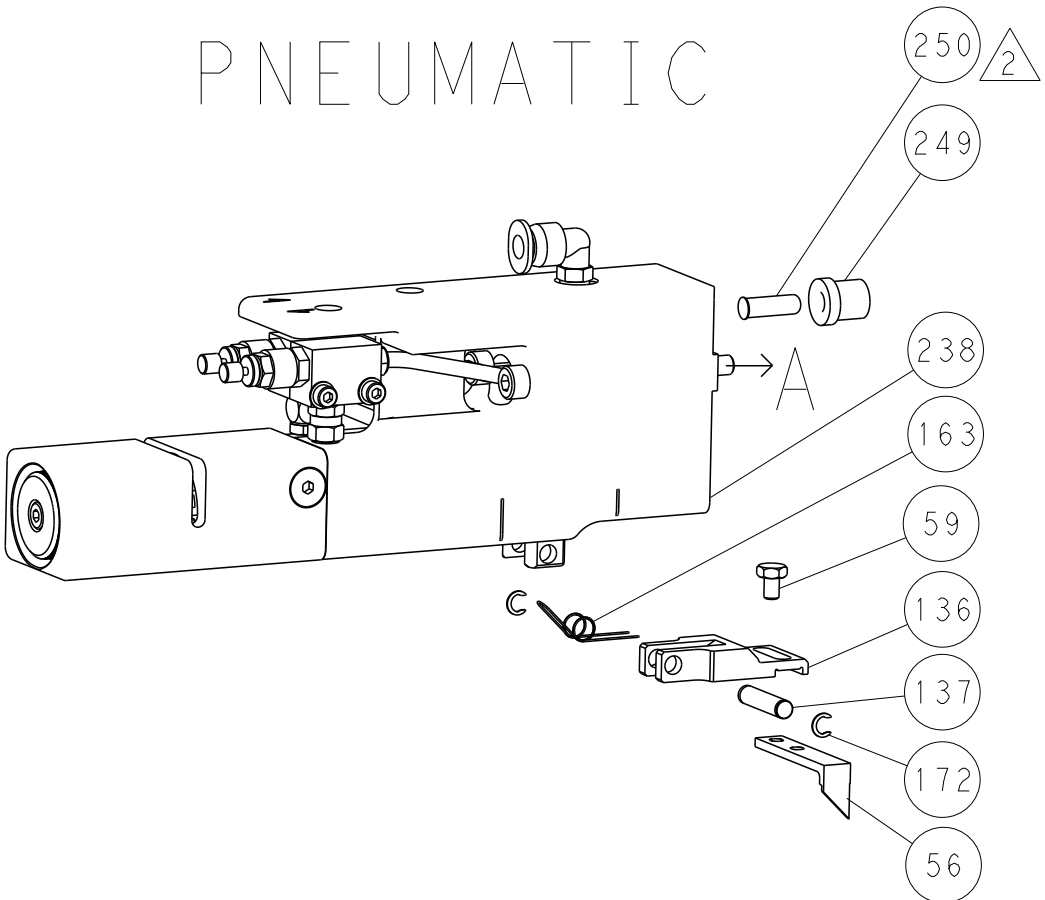
				2				I			
		SET UP GAUGE 2119599-1		LOC A	DIST 66	REVISIONS					
						P	LTR	DESCRIPTION	DATE	OWN	APVD
							A3	ECR-14-001856	10FEB2014	RK	GB
							A4	ECR-15-012960	9SEP2015	RS	UG
-	-	-	1	-	-	-		2119758-1	RAM, AMP STYLE, SIDE FEED, NON-ADJ.		245
-	-	1	1	1	1	1		2119082-9	CAM, SNAIL, INSULATION ADJUSTMENT		244
-	-	1	1	1	1	1		2079764-1	WASHER, WAVE SPRING, CREST-TO-CREST		243
-	-	1	1	1	1	1		2119083-1	RETAINER, INSULATION DIAL		242
-	-	1	1	1	1	1		7-18023-7	SCR, SKT HD CAP M3 X 4.0		241
-	-	-	2	2	-	-		2168400-6	SHCS, LOW HEAD, RoHS, M5 X 16		240
-	-	-	-	-	-	1		2119580-1	MECHANICAL FEED ASSEMBLY		239
-	-	-	-	-	1	-		2063440-1	AIR FEED MODULE		238
-	-	-	1	1	-	-		2119740-2	TAG, IDENTIFICATION		213
-	-	-	1	1	-	-		1901094-3	SPACER, FEEDER		198
-	-	-	-	-	2	-		21045-3	RING, RETAIN, EXTERN, 3/16 CRESCENT		172
-	-	1	1	1	1	1		994969-1	MAGNET, RARE EARTH HIGH ENERGY		166
-	-	REF	REF	REF	REF	REF		994970-2	COUNTER, MAGNETIC		164
-	-	-	-	-	1	-		240638-1	SPRING, FEED FINGER		163
-	-	-	-	-	1	-		3-23627-7	PIN, RETAIN, GRVD, 3/16 X .854		137
-	-	-	-	-	1	-		2119799-1	HOLDER, FEED FINGER, AF		136
-	-	-	REF	REF	-	-		SEE NOTE 4	MEMORY CHIP, PROGRAMMED		135
-	-	-	1	1	-	-		1633743-1	SERVO FEED LATCH ASM		133
-	-	1	1	1	1	1		1-18028-2	WASHER, FLAT, REG M4		119
-	-	-	REF	REF	-	-		2119944-1	FEED FINGER ASSEMBLY, SF		117
1	-	1	1	1	1	1		455888-8	SPACER, CRIMPER		82
-	-	1	1	1	1	1		22278-8	SPRING, COMPRESSION		77
-	-	1	1	1	1	1		854769-4	HOLDER, INS		74
1	-	-	-	-	-	-		2266101	PRINT, APPLICATOR LOG SHEET		72
-	-	1	1	1	1	1		2119956-1	DOCUMENTATION PACKAGE		71
-	-	1	1	1	1	1		2119791-9	DEPRESSOR, WIRE		70
-	-	1	-	-	1	1		2119740-1	TAG, IDENTIFICATION		67
-	-	2	2	2	2	2		2168078-1	SCREW, DRIVE, RH, RoHS, 2 x .188		66
-	-	1	-	1	1	1		2119793-1	LIMITER, ADJUSTMENT BOLT		63
-	-	3	-	3	3	3		992763-5	SCR, SET, SOC, CONE POINT, M3 x 4.0		62
-	-	1	1	1	1	1		2079383-4	SCR, BHSC, RoHS (M4 X 8)		60
-	-	-	-	-	1	1		5-18022-5	SCR, HEX HD CAP, M4 X 6.0		59
-	-	1	1	1	1	1		21028-2	PIN, SLOTTED SPRING .062 X .250		58
-	-	-	-	-	1	1		1338685-1	PAWL, FEED		56
-	-	4	4	4	4	4		2168400-1	SHCS, LOW HEAD, RoHS, M4 X 12		54
-	-	2	2	2	2	2		1-2168083-0	SCR, SKT HD CAP, RoHS, M4 X 10		53
-	-	1	1	1	1	1		5018030-1	NUT, HEX, REG, RoHS, M3		52
-	-	1	1	1	1	1		811242-5	BUMPER, HOLD DOWN		51
-	-	1	1	1	1	1		690753-2	SPACER, TONKER		50
-	-	-	-	-	1	2		18023-9	SCR, SKT HD CAP M4 X 6.0		49
-	-	-	-	-	-	1		2119652-1	FEED CAM, PRE FEED		48
-	-	-	-	-	-	1		2119653-1	FEED CAM, POST FEED		47
-	-	1	1	1	1	1		2119656-9	APPLICATOR BASIC ASSEMBLY, SF		46
-	-	1	-	1	1	1		2119370-1	RAM, AMP STYLE, SIDE FEED		44
-	-	1	1	1	1	1		2079383-7	SCR, BHSC, RoHS (M8 X 25)		41
-	-	1	-	1	1	1		2119645-1	DISC, NUMBERED FA WIRE ADJUSTMENT		40
-	-	1	-	1	1	1		2119957-1	APPLICATOR SHIM PACK		39
-	-	1	1	1	1	1		2119644-1	RAM WASHER, PRECISION		38
-	-	1	1	1	1	1		2119085-1	FA HEAD, ATLANTIC STYLE		37
-	-	1	-	1	1	1		2119092-1	BOLT, ADJUSTMENT		35
-	-	1	1	1	1	1		2-1752356-0	SUPPORT, TERMINAL		34
-	-	2	2	2	2	2		2079383-5	SCR, BHSC, RoHS (M4 X 20)		33
-	-	1	1	1	1	1		2161328-1	HEX HEAD, FLANGED, M5 x 8mm LONG		32
-	-	1	1	1	1	1		1-1320908-0	SPACER, STRIP GUIDE		30
-	-	1	1	1	1	1		2119959-1	ASSEMBLY, STRIP GUIDE		29
-	-	1	1	1	1	1		455888-3	SPACER, CRIMPER		28
-	-	1	1	1	1	1		1320928-2	STRIP GUIDE		24
-	-	1	1	1	1	1		2168083-2	SCR, SKT HD CAP, RoHS, M4 X 8.0		21
-	-	1	1	1	1	1		1-18028-2	WASHER, FLAT, REG M4		20
-	-	1	1	1	1	1		2119533-1	STRIPPER, SIDE FEED		19
-	-	1	1	1	1	1		2119806-1	INSERT, SHEAR		13
-	-	1	1	1	1	1		3-22280-3	SPRING, COMPRESSION		12
-	-	1	1	1	1	1		1-356885-4	STOP, SHEAR		11
-	-	1	1	1	1	1		2119805-1	SHEAR HOLDER, FRONT		10
-	-	1	1	1	1	1		1803095-1	FLOATING SHEAR, FRONT		9
1	1	1	1	1	1	1		1803054-2	ANVIL, COMBINATION		8
-	-	-	-	-	-	-		-	-		7
-	-	-	-	-	-	-		-	-		6
-	-	1	1	1	1	1		2119780-9	DEPRESSOR, SHEAR		5
-	-	1	1	1	1	1		238011-9	BLOCK, CRIMPER SPACER		4
1	1	1	1	1	1	1		1803019-4	CRIMPER, INSULATION O		3
1	-	1	1	1	1	1		455888-3	SPACER, CRIMPER		2
-	1	1	1	1	1	1		2-1633713-6	CRIMPER, WIRE PREMIUM		1
-78	-77	-7	-6	-5	-2	-1		PART NO	DESCRIPTION		ITEM NO
THIS DRAWING IS A CONTROLLED DOCUMENT FOR TEO CONNECTIVITY CORPORATION IT IS SUBJECT TO CHANGE AND THE MANUFACTURING ORGANIZATION SHALL BE CONTACTED FOR THE LATEST EDITION.											
DIMENSIONS:		TOLERANCES UNLESS OTHERWISE SPECIFIED:		OWN R. KNEPPER 03-Oct-13		CHK G. BAILEY 03-Oct-13		NAME		TE Connectivity Harrisburg, PA 17105-3608	
mm		0 PLC ±.5 1 PLC ±.13 2 PLC ±.13 3 PLC ±.013 4 PLC ±.0001 ANGLES ±.1		APVD W. CLIFFORD 03-Oct-13		PRODUCT SPEC					
				APPLICATION SPEC				SIZE		CAGE CODE DRAWING NO	
MATERIAL		FINISH		WEIGHT		A1		00779		C=2266101	
Customer Accessible Production Drawing										SCALE 1:2 SHEET 1 OF 4 REV A4	

LOC		DIST		REVISONS				
A	66	P	LTR	DESCRIPTION	DATE	DWN	APVD	
		-		SEE SHEET 1	-	-	-	

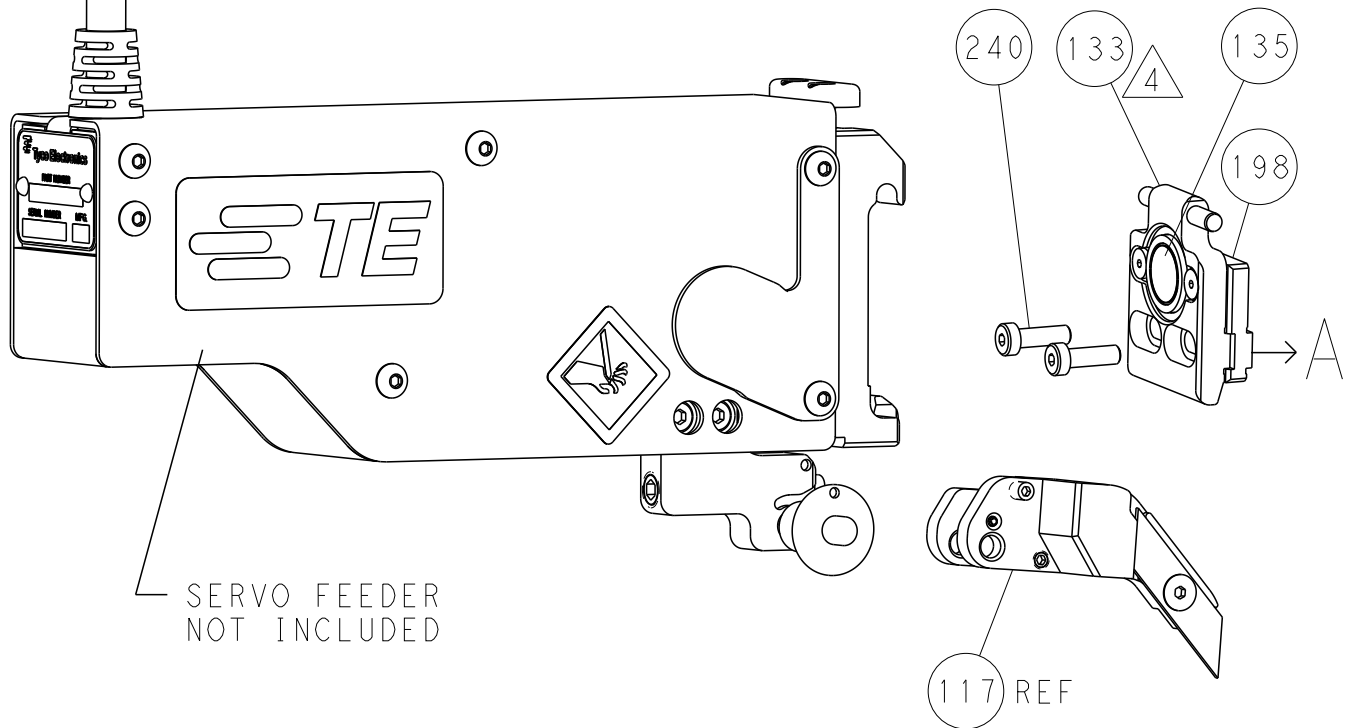
# FEED TYPE MECHANICAL



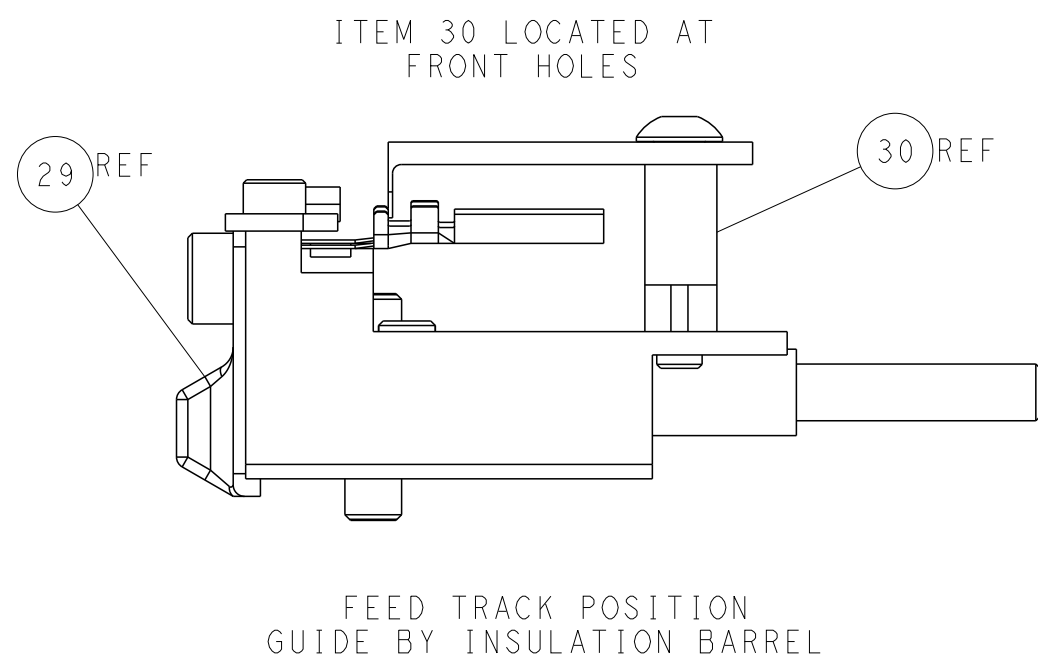
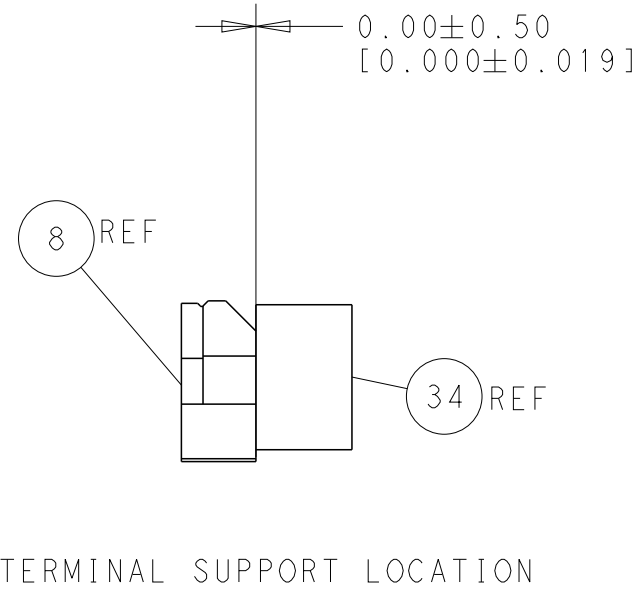
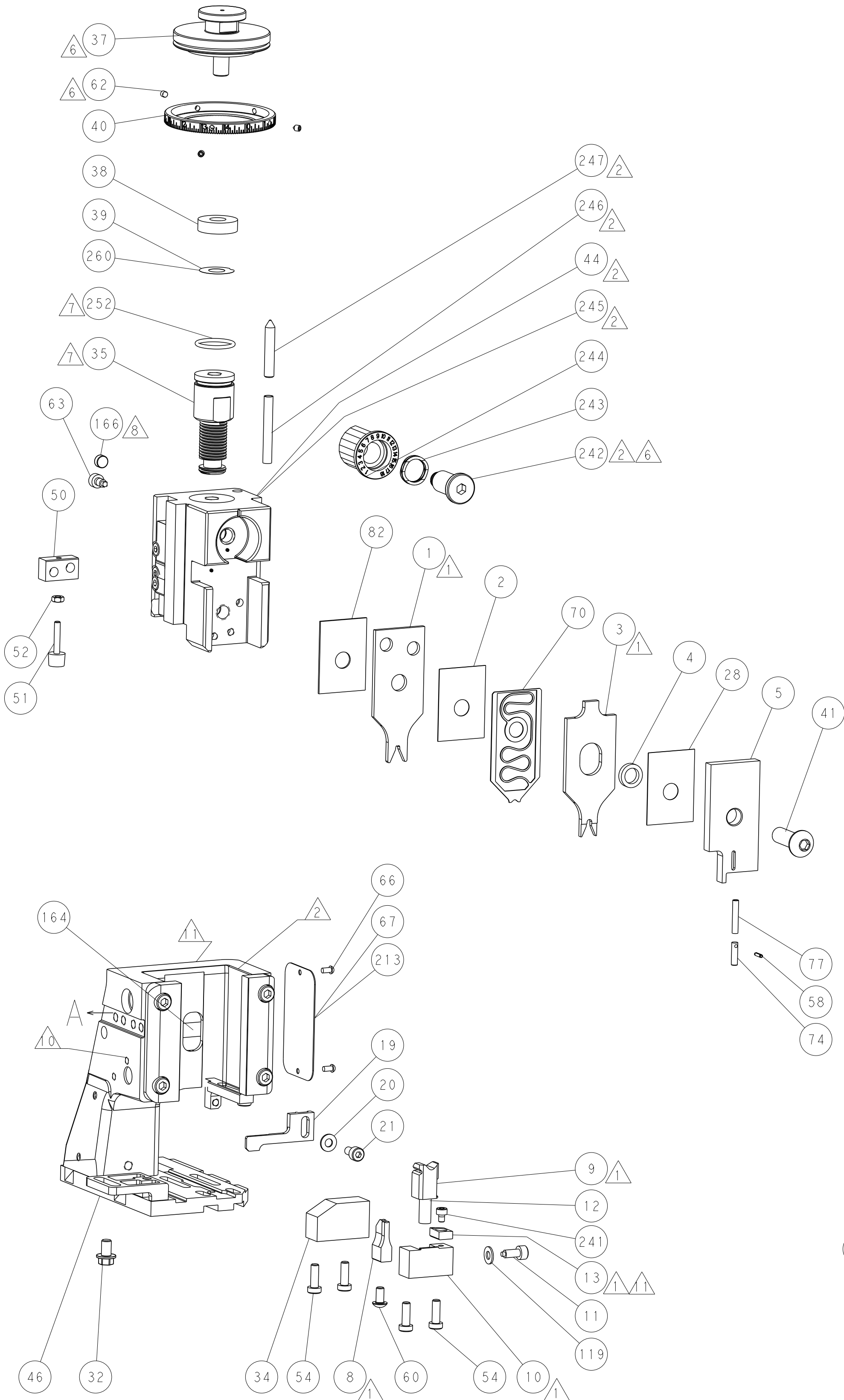
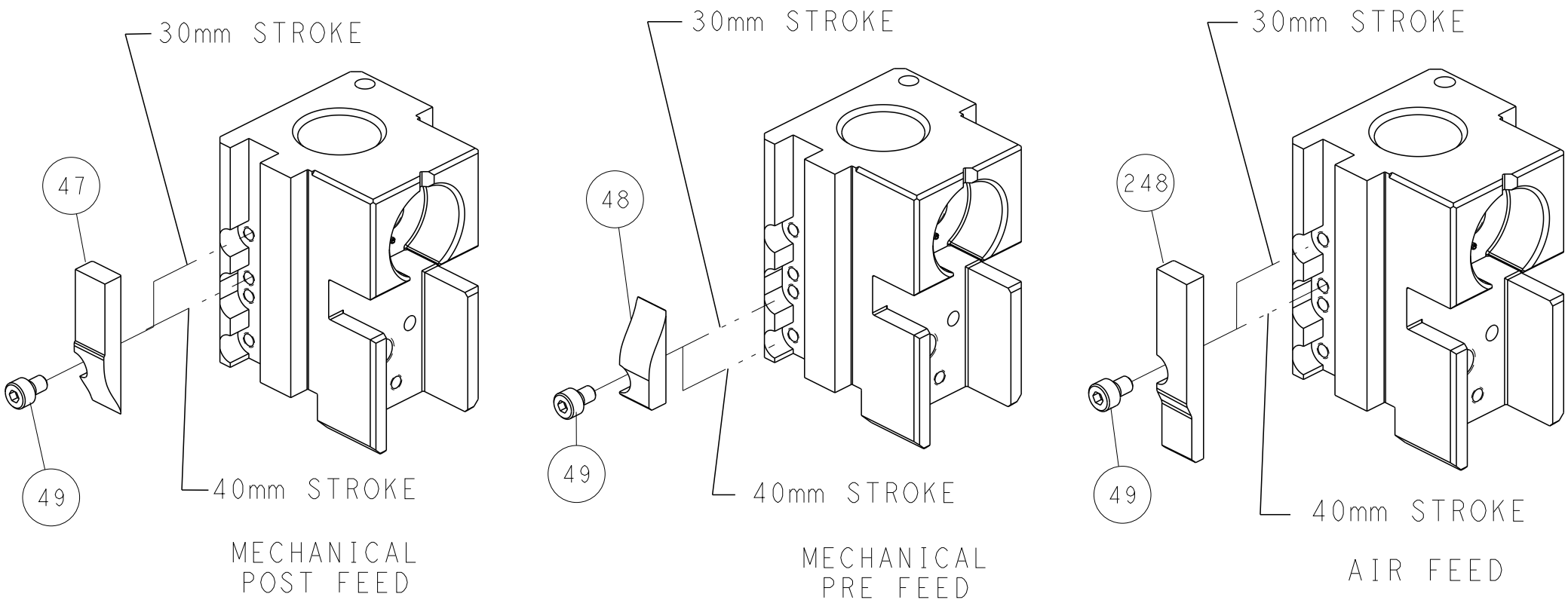
# PNEUMATIC



# SERVO LATCH PLATE



# CAM POSITIONS



ATLANTIC VERSION  
Shown on sheets 1 of 4 & 2 of 4  
(Pacific version shown on sheets 3 of 4 & 4 of 4)

THIS DRAWING IS UNPUBLISHED. IT IS SUBJECT TO CHANGE WITHOUT NOTICE. IT IS THE RESPONSIBILITY OF THE USER TO VERIFY THE DIMENSIONS AND TOLERANCES OF THE PARTS AND ASSEMBLY BEFORE USE. IT IS SUBJECT TO CHANGE WITHOUT NOTICE. IT IS THE RESPONSIBILITY OF THE USER TO VERIFY THE DIMENSIONS AND TOLERANCES OF THE PARTS AND ASSEMBLY BEFORE USE.				DWN R. KNEPPER 03-Oct-13 CHK G. BAILEY 03-Oct-13 APVD M. CLIFFORD 03-Oct-13				TE Connectivity Harrisburg, PA 17105-3608			
DIMENSIONS: mm				TOLERANCES UNLESS OTHERWISE SPECIFIED: 0 PLC ±.5 1 PLC ±0.5 2 PLC ±0.13 3 PLC ±0.013 4 PLC ±0.0001 ANGLES FINISH				NAME Ocean Side Feed Applicator			
MATERIAL				WEIGHT				SIZE A1			
Customer Accessible Production Drawing				SCALE 1:2				SHEET 2 of 4			
								REV A4			





LOC		DIST		REVISIONS					
A		66		P	LTR	DESCRIPTION	DATE	DWN	APVD
					-	SEE SHEET 1	-	-	-

D

C

B

A

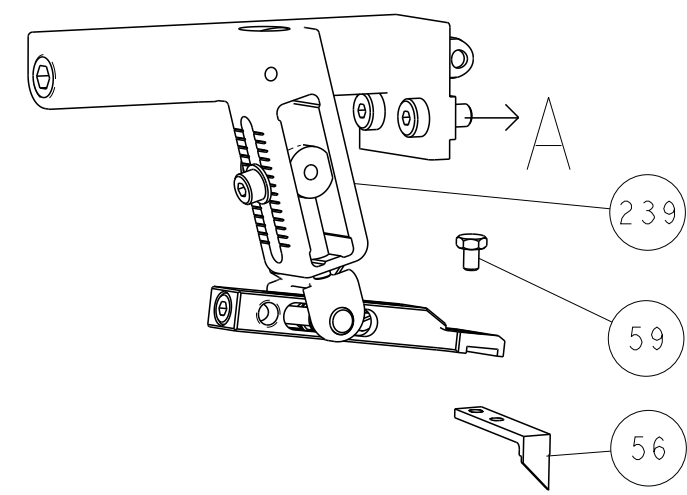
D

C

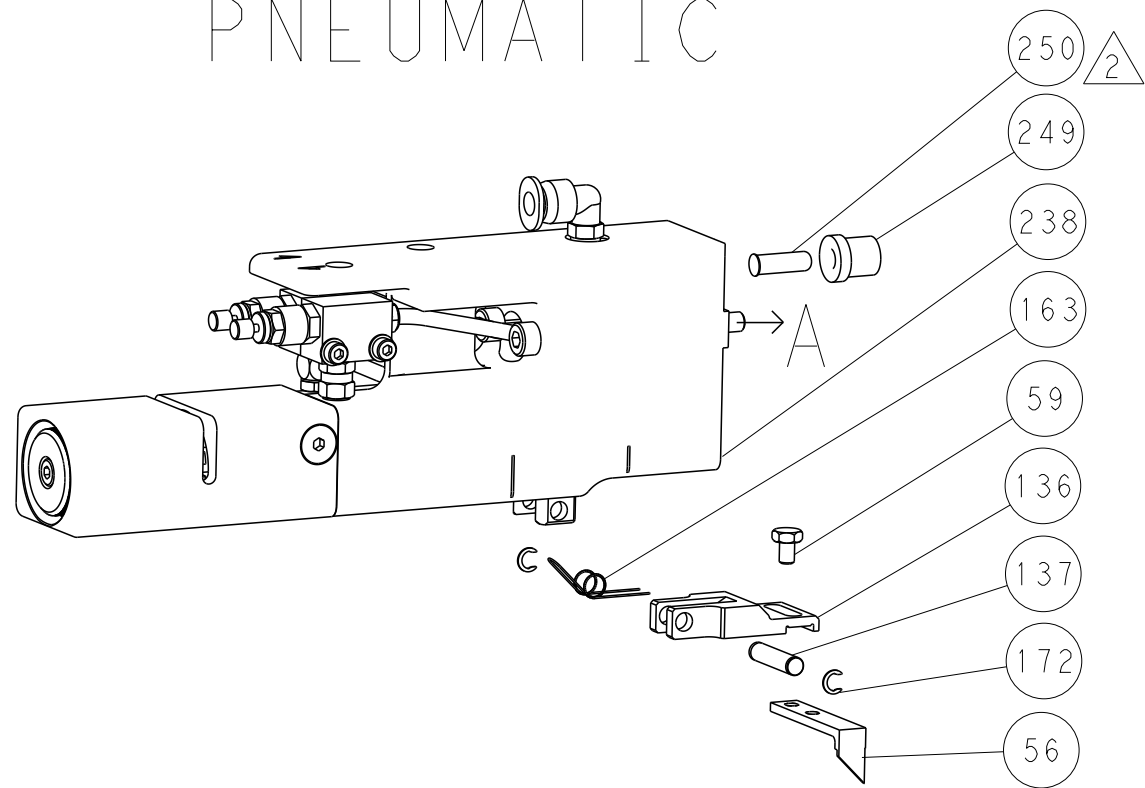
B

A

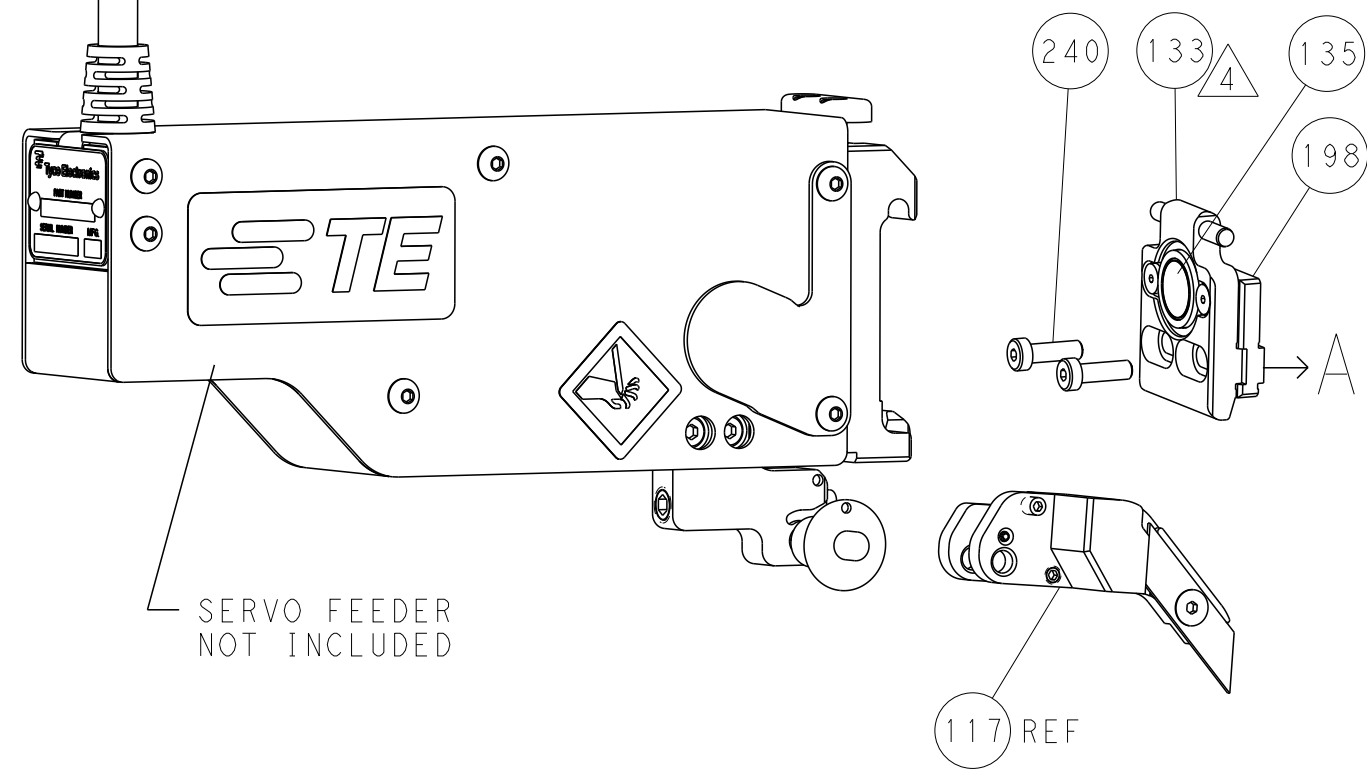
# FEED TYPE MECHANICAL



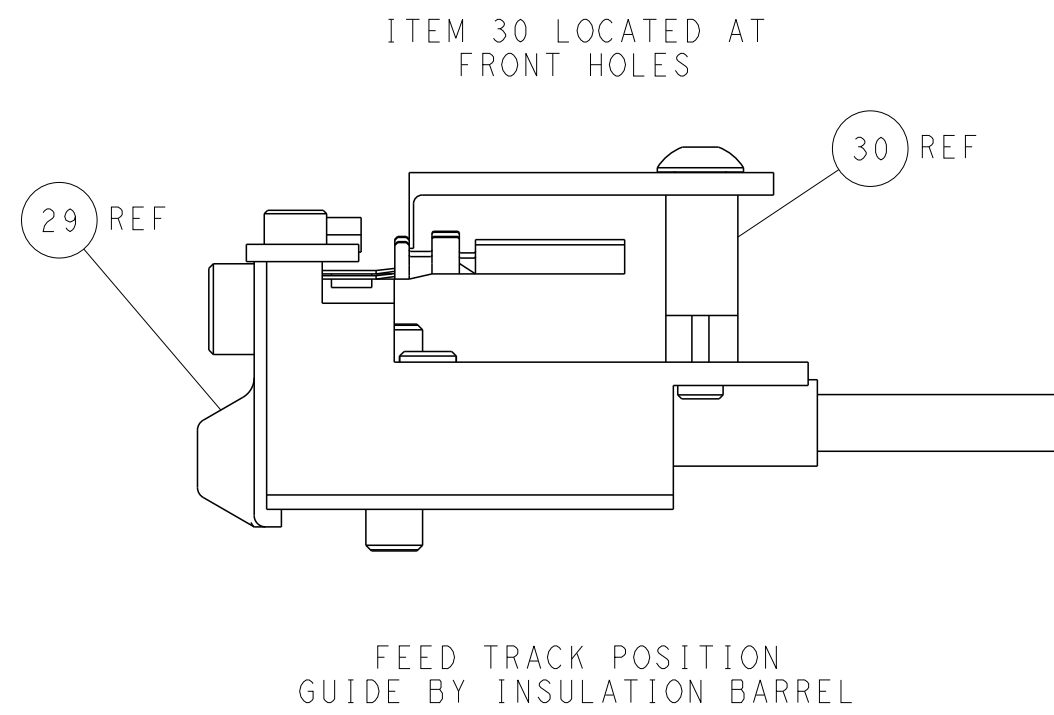
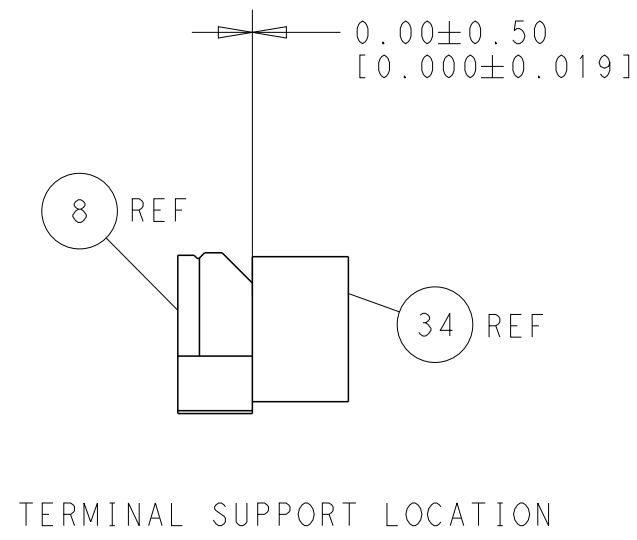
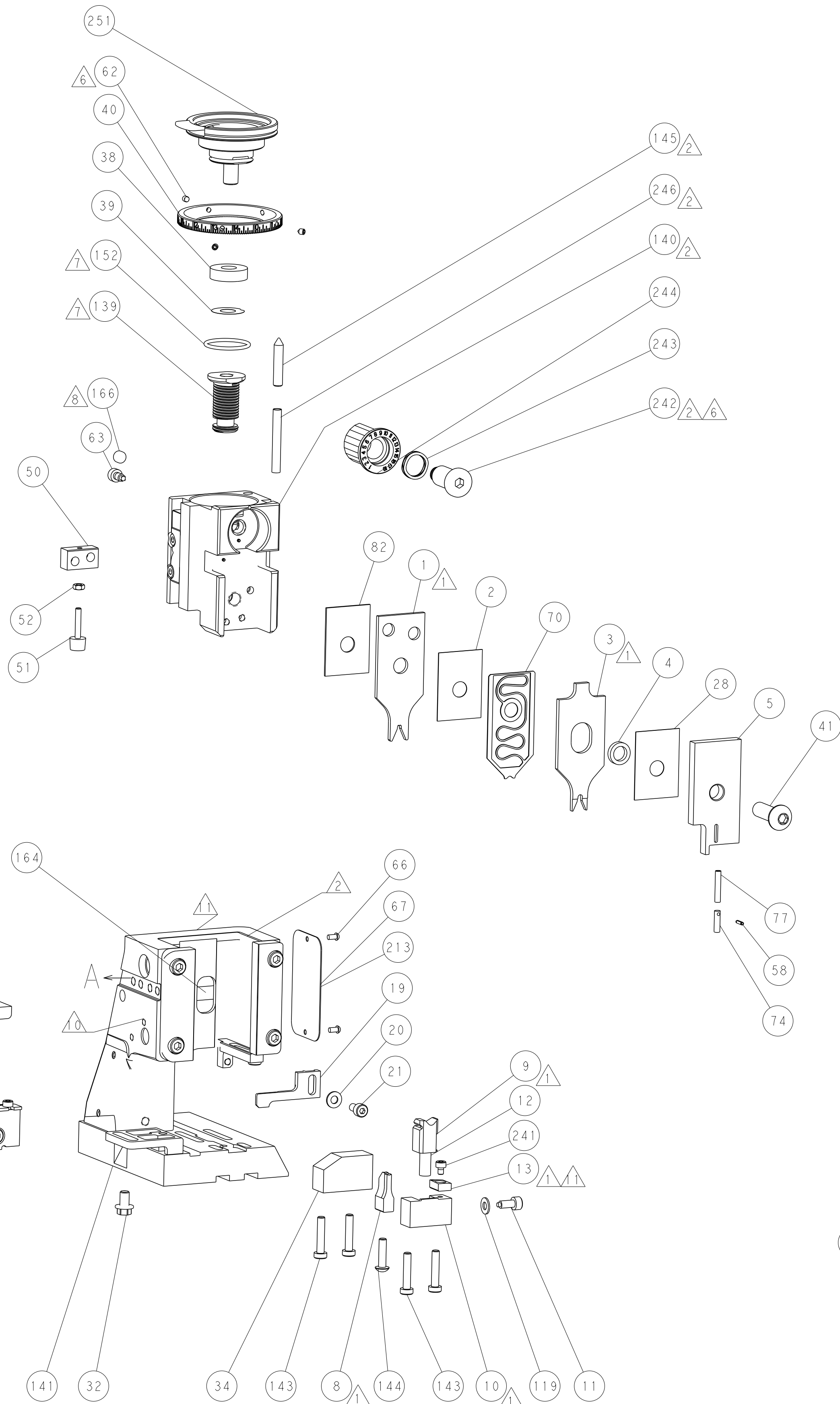
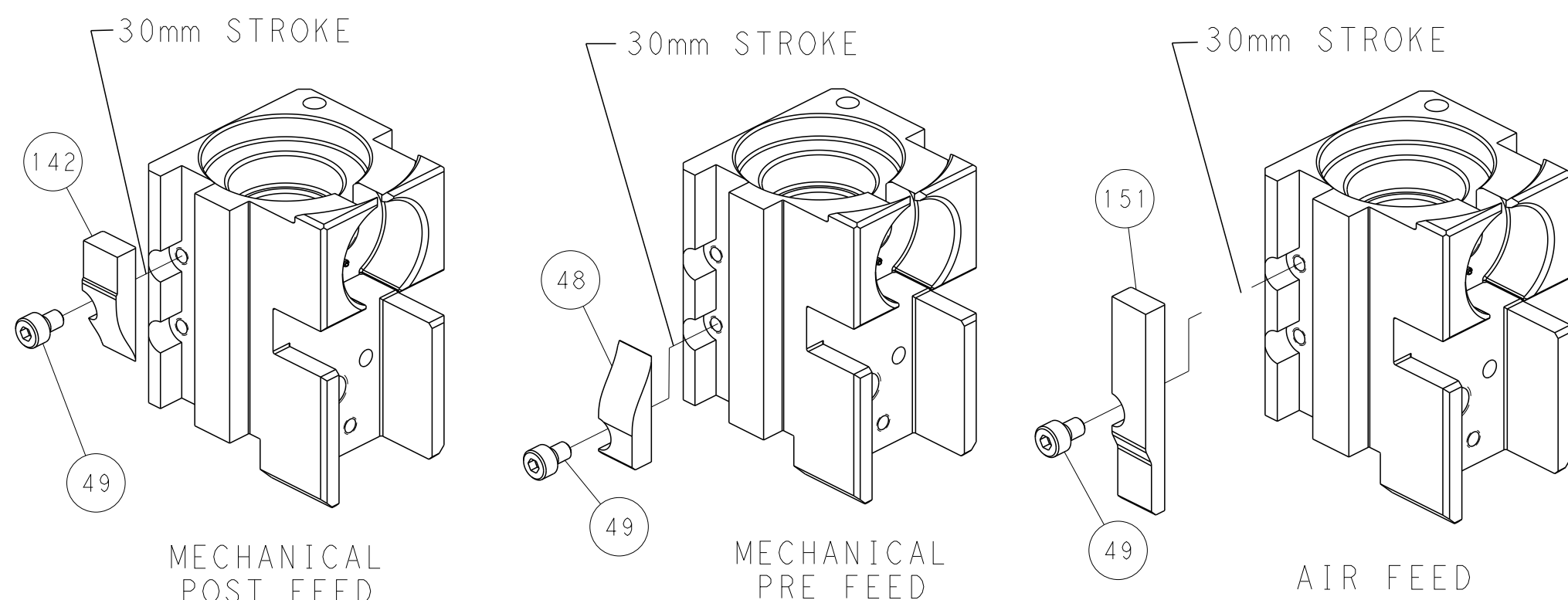
# PNEUMATIC



# SERVO LATCH PLATE



# CAM POSITIONS



PACIFIC VERSION  
Shown on sheets 3 of 4 & 4 of 4  
(Atlantic version shown on sheets 1 of 4 & 2 of 4)

THIS DRAWING IS UNPUBLISHED. IT IS SUBJECT TO CHANGE WITHOUT NOTICE. THE USER SHALL BE RESPONSIBLE FOR THE LATEST VERSION.		DWN R. KNEPPER 03-Oct-13	TE Connectivity Harrisburg, PA 17105-3608	
DIMENSIONS: mm		CHK G. BAILEY 03-Oct-13	NAME Ocean Side Feed Applicator	
TOLERANCES UNLESS OTHERWISE SPECIFIED: 0 PLC ±.5 1 PLC ±.13 2 PLC ±.13 3 PLC ±.013 4 PLC ±.0001 ANGLES ±.1		APVD M. CLIFFORD 03-Oct-13	PRODUCT SPEC	
MATERIAL		APVD	APPLICATION SPEC	
		WEIGHT	SIZE A1	
		Customer Accessible Production Drawing	SCALE 1:2	
			SHEET 4	
			OF 4	
			REV A4	

SHEETS 1 & 2 ARE NOT REQUIRED FOR PACIFIC VERSION