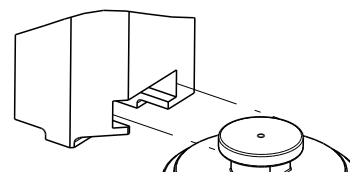
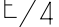

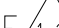





8		7	
THIS DRAWING IS UNPUBLISHED.		RELEASED FOR PUBLICATION	
20		20	
© COPYRIGHT 20 BY TYCO ELECTRONICS CORPORATION. ALL RIGHTS RESERVED.			




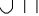
ATLANTIC VERSION TERMINATOR INTERFACE ADAPTER	PART NUMBER	REVISION	DESCRIPTION	FEED TYPE
	2266100-1	A	FINE CRIMP HEIGHT ADJUST	MECHANICAL
	2266100-2	A	FINE CRIMP HEIGHT ADJUST	PNEUMATIC
	2266100-5	A	FINE CRIMP HEIGHT ADJUST	SERVO LATCH PLATE 
	2266100-6	A	NON-CRIMP HEIGHT ADJUST	 SERVO LATCH PLATE 
	2266100-7	A	FINE CRIMP HEIGHT ADJUST	NONE
	7-2266100-7	A	CRIMP TOOLING KIT	-
	7-2266100-8	A	APPLICATOR CONVERSION KIT	- 

APPLICATOR DATA		
CRIMP	SIZE	TYPE
WIRE	2.29 mm [.090]	F
INSUL	3.20 mm [1.26]	O
APPLICATOR INSTRUCTIONS 408-10389		

13 APPLICATOR CONVERSION KITS	
PART NUMBER	INSULATION DIAMETER RANGE
7-2266100-8	Ø 3.05-3.81mm [ .120-.150]
7-2266101-8	Ø 2.67-3.18mm [ .105-.125]
7-2266102-8	Ø 2.16-2.82mm [ .085-.111]
7-2266103-8	Ø 1.91-2.67mm [ .075-.105]
7-2266104-8	Ø 1.60-2.39mm [ .063-.094]

TERMINAL DATA: DEUTSCH TERMINAL		TE CRIMP SPECIFICATION	
TERMINAL NAME: STAMPED CONTACT PIN SIZE 16			
WIRE STRIP LENGTH 3.81-5.09 mm [ .150-.200 IN]		INSULATION DIAMETER RANGE Ø3.05-3.81 mm [ .120-.150 IN]	
TERMINAL APPLICATION SPECIFICATION 		114-151000 - -	
TERMINALS APPLIED			
TE TERMINAL	DEUTSCH TERMINAL	TE TERMINAL	DEUTSCH TERMINAL
286505-1	1060-14-0122	286505-2	1060-14-0144
286505-3	1060-14-0177	286505-5	1060-14-1077
286505-6	1060-14-1088		

TERMINAL DATA: DEUTSCH TERMINAL		TE CRIMP SPECIFICATION	
TERMINAL NAME: STAMPED CONTACT SOCKET SIZE 16			
WIRE STRIP LENGTH 3.81-5.09 mm [.150-.200 IN]		INSULATION DIAMETER RANGE Ø 3.05-3.81 mm [.120-.150 IN]	
TERMINAL APPLICATION SPECIFICATION	114-151000	-	-
TERMINALS APPLIED			
TE TERMINAL	DEUTSCH TERMINAL	TE TERMINAL	DEUTSCH TERMINAL
286506-1	1062-14-0122	286506-2	1062-14-0144
286506-3	1062-14-0177	286506-6	1062-14-1088
286506-5	1062-14-1077		

WIRE SIZE			CRIMP HEIGHT mm [INCH]		CRIMP HEIGHT REFERENCE SETTING	
14 AWG			1.40+0.03/-0.05 [0.055+0.001/-0.002]		4.6	
2.00mm2			1.40+0.03/-0.05 [0.055+0.001/-0.002]		4.6	
1.50mm2			1.35+0.03/-0.05 [0.053+0.001/-0.002]		5.2	
16 AWG			1.27+0.03/-0.05 [0.050+0.001/-0.002]		6.0	
1.00mm2			1.27+0.03/-0.05 [0.050+0.001/-0.002]		6.0	
18 AWG			1.24+0.03/-0.05 [0.049+0.001/-0.002]		6.2	
0.75mm2			1.22+0.03/-0.05 [0.048+0.001/-0.002]		6.4	



1. RECOMMENDED SPARE PARTS
2. GREASE BEARING SURFACES LIGHTLY
3. LUBRICATE DAILY PER THE APPLICATOR INSTRUCTION SHEET SUPPLIED WITH THE APPLICATOR.
4. APPLICATOR SPECIFIC DATA TO BE ENTERED INTO BLANK MEMORY CHIP AT ASSEMBLY. SEE BELOW FOR PART NUMBER:
  - MECHANICAL FEED WITH "SMART APPLICATOR" CONVERSION: 8-2266100-4
  - PNEUMATIC FEED WITH "SMART APPLICATOR" CONVERSION: 8-2266100-4
  - SERVO FEED WITH "FINE CRIMP HEIGHT ADJUST": 8-2266100-5
  - SERVO FEED WITH "NON-CRIMP HEIGHT ADJUST": 8-2266100-6
5. ADJUSTMENT OF THE STRIPPER MAY BE REQUIRED WHEN MOVING THE APPLICATOR BETWEEN BENCH AND LEADMAKER APPLICATIONS.
6. APPLY PART NUMBER 1-23419-5 LOCTITE TO THREADS OF ITEMS 62 & 242.  
FOR -6 ONLY APPLY PART NUMBER 1-23419-5 LOCTITE TO THREADS OF ITEMS 37 & 242.
7. GREASE THREADS, GROOVE AND O-RING ON ITEMS 35 & 252.
8. MAGNET, ITEM 166 MUST BE ORIENTED CORRECTLY IN ORDER TO PROPERLY ACTUATE THE COUNTER.
9. CRIMP HEIGHT REFERENCE SETTING WAS THE SETTING USED WHEN THE APPLICATOR WAS QUALIFIED AT THE FACTORY. ADJUSTMENT MAY BE NECESSARY WHEN RUNNING APPLICATOR IN THE FIELD.
10. SPARE FEED CAM STORAGE LOCATION REFER TO INSTRUCTION SHEET FOR ADDITIONAL INFORMATION.
11. TO CONVERT THE APPLICATOR TO A NON-CARRIER CUTTING STYLE, REMOVE ITEM 13 AND ATTACH TO THE LOCATION ON THE BACK SIDE OF THE HOUSING. REFER TO INSTRUCTION SHEET FOR ADDITIONAL INFORMATION.
12. WHEN ASSEMBLING A NON CRIMP HEIGHT ADJUST APPLICATOR (-6) USE SHIMS FROM ITEM 260 TO ACHIEVE A NOMINAL SHIM HEIGHT OF 4.40.
13. SEE APPROPRIATE APPLICATOR LOG SHEETS FOR APPLIED TERMINALS, WIRE RANGE AND MEMORY CHIP.

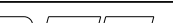
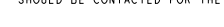
6	5	4	3			
APPLICATOR STYLE CONVERSION CHART						
CONVERT TO	PART NUMBERS REQUIRED					
PNEUMATIC FEED	2119950-1	1338685-1	5-18022-5	2119641-1	2119799-1	2063440-1
SERVO LATCH PLATE	2119951-1	-	8-2266100-5	1901094-3	-	2168400-6 (QUANTITY 2)
SMART APPLICATOR	2161326-1	-	8-2266100-4	-	-	-
MECHANICAL FEED	2119949-1	1338685-1	5-18022-5	2119653-1	-	-
SERVO LATCH PLATE	2119951-1	-	8-2266100-5	1901094-3	-	2168400-6 (QUANTITY 2)
SMART APPLICATOR	2161326-1	-	8-2266100-4	-	-	-
MECHANICAL FEED	2119949-1	1338685-1	5-18022-5	2119653-1	-	-
PNEUMATIC FEED	2119950-1	1338685-1	5-18022-5	2119641-1	2119799-1	2063440-1
-	-	-	-	-	-	-
-	-	-	-	-	-	-
-	-	-	-	-	-	-
-	-	-	-	-	-	-

-	-	-	1	-	-	-	2119957-2	APPLICATOR SHIM PACK	260
-	-	1	-	1	1	1	8-21084-0	O-RING, .676 ID, .070 DIA. MAT.	252
-	-	-	-	-	1	-	2119640-1	PUSH ROD, AIR FEED	250
-	-	-	-	-	1	-	2079988-1	BUSHING, LCH5-12, MISUMI	249
-	-	-	-	-	1	-	2119641-1	FEED CAM, AIR FEED	248
-	-	1	-	1	1	1	2119798-1	DETENT PIN	247
-	-	1	-	1	1	1	1-22279-3	SPRING, COMPRESSION	246
-78	-77	-7	-6	-5	-2	-1	PART NO	DESCRIPTION	ITEM NO

ATLANTIC VERSION  
Shown on sheets 1 of 4 & 2 of 4  
(Pacific version shown on sheets 3 of 4 & 4 of 4)

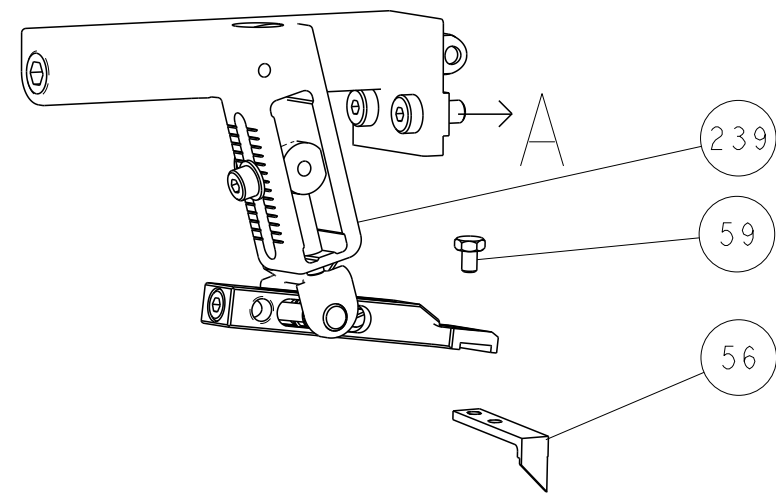
			2						1			
SET UP GAUGE 2119599-1		LOC A	DIST 66	REVISIONS								
P	LTR	DESCRIPTION						DATE	DWN	APVD		
A1	ECR-14-001856							07FEB2014	RK	GB		
A2	ECR-14-003679							12MAR2014	YY	UG		
A3	ECR-15-012960							9SEP2015	RS	UG		

-	-	-	1	-	-	-	2119758-1	RAM, AMP STYLE, SIDE FEED, NON-ADJ.	245
-	-	-	1	1	1	1	2119082-9	CAM, SNAIL, INSULATION ADJUSTMENT	244
-	-	-	1	1	1	1	2079764-1	WASHER, WAVE SPRING, CREST-TO-CREST	243
-	-	-	1	1	1	1	2119083-1	RETAINER, INSULATION DIAL	242
-	-	-	1	1	1	1	7-18023-7	SCR, SKT HD CAP M3 X 4.0	241
-	-	-	2	2	-	-	2168400-6	SHCS, LOW HEAD, RoHS, M5 X 16	240
-	-	-	-	-	-	1	2119580-1	MECHANICAL FEED ASSEMBLY	239
-	-	-	-	-	1	-	2063440-1	AIR FEED MODULE	238
-	-	-	-	1	1	-	2119740-2	TAG, IDENTIFICATION	213
-	-	-	-	1	1	-	1901094-3	SPACER, FEEDER	198
-	-	-	-	-	2	-	21045-3	RING, RETAIN, EXTERN, 3/16 CRESCENT	172
-	-	-	1	1	1	1	994969-1	MAGNET, RARE EARTH HIGH ENERGY	166
-	-	-	REF	REF	REF	REF	994970-2	COUNTER, MAGNETIC	166
-	-	-	-	-	1	-	240638-1	SPRING, FEED FINGER	163
-	-	-	-	-	1	-	3-23627-7	PIN, RETAIN, GRVD, 3/16 X .854	137
-	-	-	-	-	1	-	2119799-1	HOLDER,FEED FINGER, AF	136
-	-	-	-	REF	REF	-	SEE NOTE 4	MEMORY CHIP, PROGRAMMED	135
-	-	-	-	1	1	-	1633743-1	SERVO FEED LATCH ASM	133
-	-	-	1	1	1	1	1-18028-2	WASHER, FLAT, REG M4	119
-	-	-	-	REF	REF	-	2119944-1	FEED FINGER ASSEMBLY,SF	117
1	-	1	1	1	1	1	455888-8	SPACER, CRIMPER	82
-	-	1	1	1	1	1	22278-8	SPRING, COMPRESSION	77
-	-	1	1	1	1	1	854769-4	HOLDER, INS	74
1	-	-	-	-	-	-	2266100	PRINT, APPLICATOR LOG SHEET	72
-	-	1	1	1	1	1	2119956-1	DOCUMENTATION PACKAGE	71
-	-	1	1	1	1	1	2119791-9	DEPRESSOR, WIRE	70
-	-	1	-	-	1	1	2119740-1	TAG,IDENTIFICATION	67
-	-	2	2	2	2	2	2168078-1	SCREW, DRIVE, RH, RoHS, 2 x .188	66
-	-	1	-	1	1	1	2119793-1	LIMITER, ADJUSTMENT BOLT	63
-	-	3	-	3	3	3	992763-5	SCR, SET, SOC, CONE POINT, M3 x 4.0	62
-	-	1	1	1	1	1	2079383-4	SCR, BHSC, RoHS (M4 X 8)	60
-	-	-	-	-	1	1	5-18022-5	SCR, HEX HD CAP, M4 X 6.0	59
-	-	1	1	1	1	1	21028-2	PIN, SLOTTED SPRING .062 X .250	58
-	-	-	-	-	1	1	1338685-1	PAWL, FEED	56
-	-	4	4	4	4	4	2168400-1	SHCS, LOW HEAD, RoHS, M4 X 12	54
-	-	2	2	2	2	2	1-2168083-0	SCR, SKT HD CAP, RoHS, M4 X 10	53
-	-	1	1	1	1	1	5018030-1	NUT, HEX, REG, RoHS, M3	52
-	-	1	1	1	1	1	811242-5	BUMPER, HOLD DOWN	51
-	-	1	1	1	1	1	690753-2	SPACER, TONKER	50
-	-	-	-	-	1	2	18023-9	SCR, SKT HD CAP M4 X 6.0	49
-	-	-	-	-	-	1	2119652-1	FEED CAM, PRE FEED	48
-	-	-	-	-	-	1	2119653-1	FEED CAM, POST FEED	47
-	-	1	1	1	1	1	2119656-9	APPLICATOR BASIC ASSEMBLY, SF	46
-	-	1	-	1	1	1	2119370-1	RAM, AMP STYLE, SIDE FEED	44
-	-	1	1	1	1	1	2079383-7	SCR, BHSC, RoHS (M8 X 25)	41
-	-	1	-	1	1	1	2119645-1	DISC, NUMBERED FA WIRE ADJUSTMENT	40
-	-	1	-	1	1	1	2119957-1	APPLICATOR SHIM PACK	39
-	-	1	1	1	1	1	2119644-1	RAM WASHER, PRECISION	38
-	-	1	1	1	1	1	2119085-1	FA HEAD, ATLANTIC STYLE	37
-	-	1	-	1	1	1	2119092-1	BOLT, ADJUSTMENT	35
-	-	1	1	1	1	1	2-1752356-0	SUPPORT, TERMINAL	34
-	-	2	2	2	2	2	2079383-5	SCR, BHSC, RoHS (M4 X 20)	33
-	-	1	1	1	1	1	2161328-1	HEX HEAD, FLANGED, M5 x 8mm LONG	32
-	-	1	1	1	1	1	1-1320908-0	SPACER, STRIP GUIDE	30
-	-	1	1	1	1	1	2119959-1	ASSEMBLY, STRIP GUIDE	29
-	-	1	1	1	1	1	455888-3	SPACER, CRIMPER	28
-	-	1	1	1	1	1	1320928-2	STRIP GUIDE	24
-	-	1	1	1	1	1	2168083-2	SCR, SKT HD CAP, RoHS, M4 X 8.0	21
-	-	1	1	1	1	1	1-18028-2	WASHER, FLAT, REG M4	20
-	-	1	1	1	1	1	2119533-1	STRIPPER, SIDE FEED	19
-	-	1	1	1	1	1	2119806-1	INSERT, SHEAR	13
-	-	1	1	1	1	1	3-22280-3	SPRING, COMPRESSION	12
-	-	1	1	1	1	1	1-356885-4	STOP, SHEAR	11
-	-	1	1	1	1	1	2119805-1	SHEAR HOLDER, FRONT	10
-	-	1	1	1	1	1	1803095-1	FLOATING SHEAR, FRONT	9
1	1	1	1	1	1	1	1803054-1	ANVIL, COMBINATION	8
-	-	-	-	-	-	-	-	-	7
-	-	-	-	-	-	-	-	-	6
-	-	1	1	1	1	1	2119780-9	DEPRESSOR, SHEAR	5
-	-	1	1	1	1	1	238011-9	BLOCK, CRIMPER SPACER	4
1	1	1	1	1	1	1	1803019-3	CRIMPER, INSULATION O	3
1	-	1	1	1	1	1	455888-1	SPACER, CRIMPER	2
-	-	1	1	1	1	1	2-1633713-6	CRIMPER, WIRE PREMIUM	1

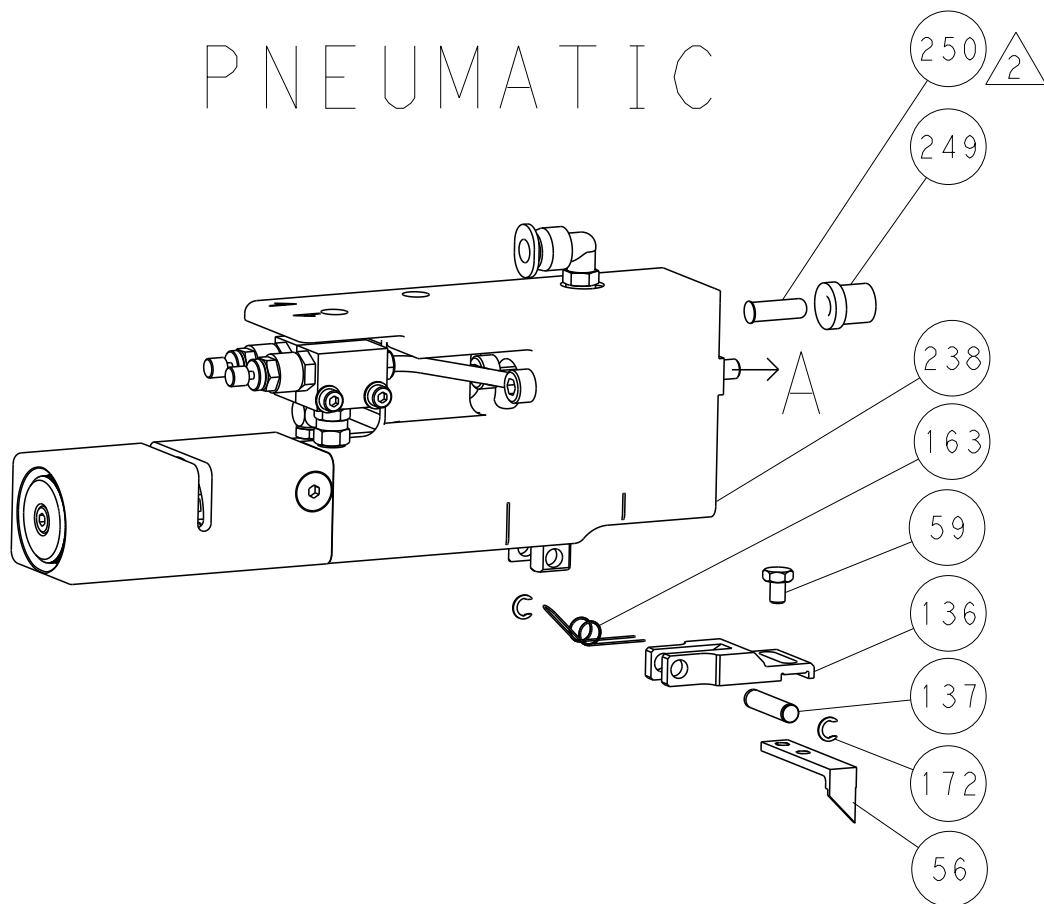
THIS DRAWING IS A CONTROLLED DOCUMENT. FOR INFORMATION, THIS DOCUMENTATION SYSTEM SHOULD BE CONTACTED FOR THE LATEST VERSION.			DWN 23AUG2013 R. KNEPPER		 TE Connectivity		Harrisburg, PA 17105-3608		
DIMENSIONS:			TOLERANCES, UNLESS OTHERWISE SPECIFIED:		NAME		Ocean Side Feed Applicator		
mm			0 PLC ±.1 1 PLC ±0.5 2 PLC ±0.13 3 PLC ±0.013 4 PLC ±0.0001		PRODUCT SPEC		-		
			FINISH		APPLICATION SPEC		-		
MATERIAL			WEIGHT		SIZE		CAGE CODE		
-			-		A   00779		DRAWING NO		
-			-		C=2266100		RESTRICTED TO		
Customer Accessible Production Drawing						SCALE		1:2	
-						SHEET		1 OF 4	
-						REV		A3	

LOC		DIST		REVISIONS				
A	66	P	LTR	DESCRIPTION	DATE	DWN	APVD	
		-		SEE SHEET 1	-	-	-	

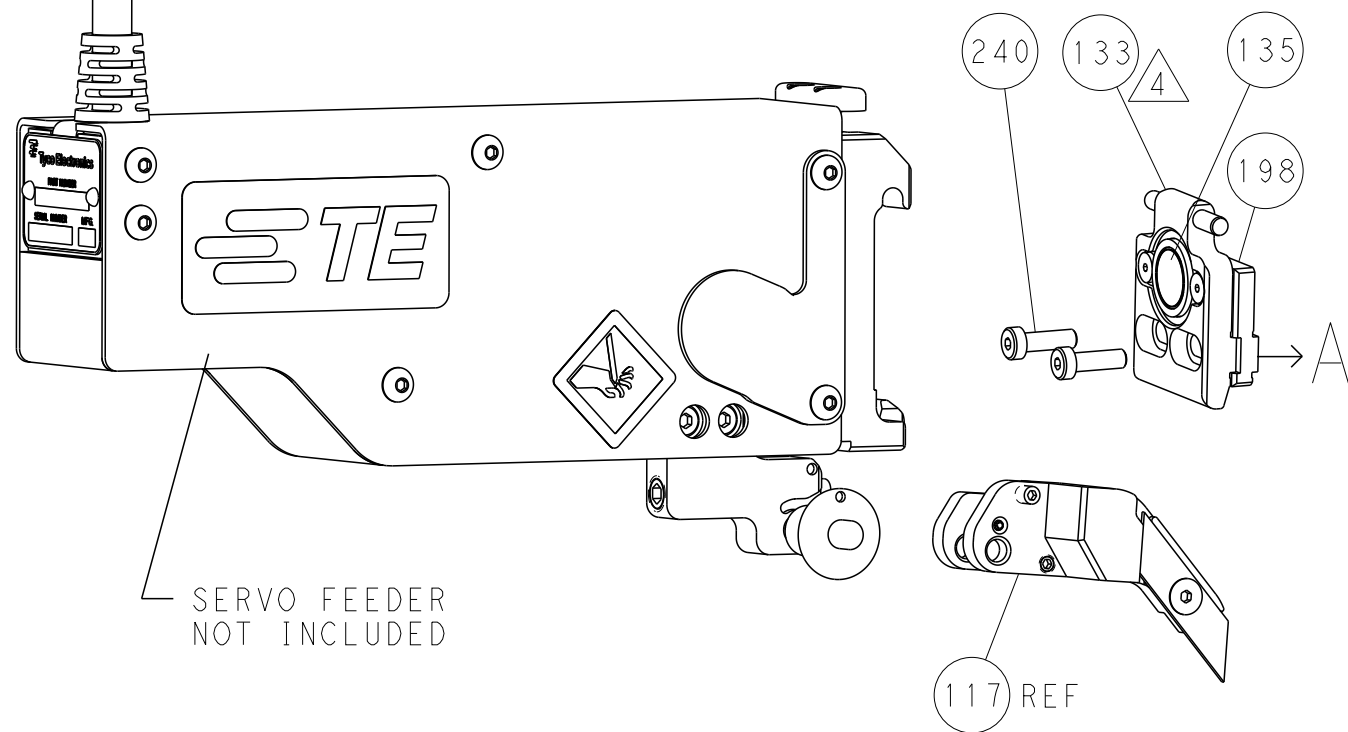
FEED TYPE  
MECHANICAL



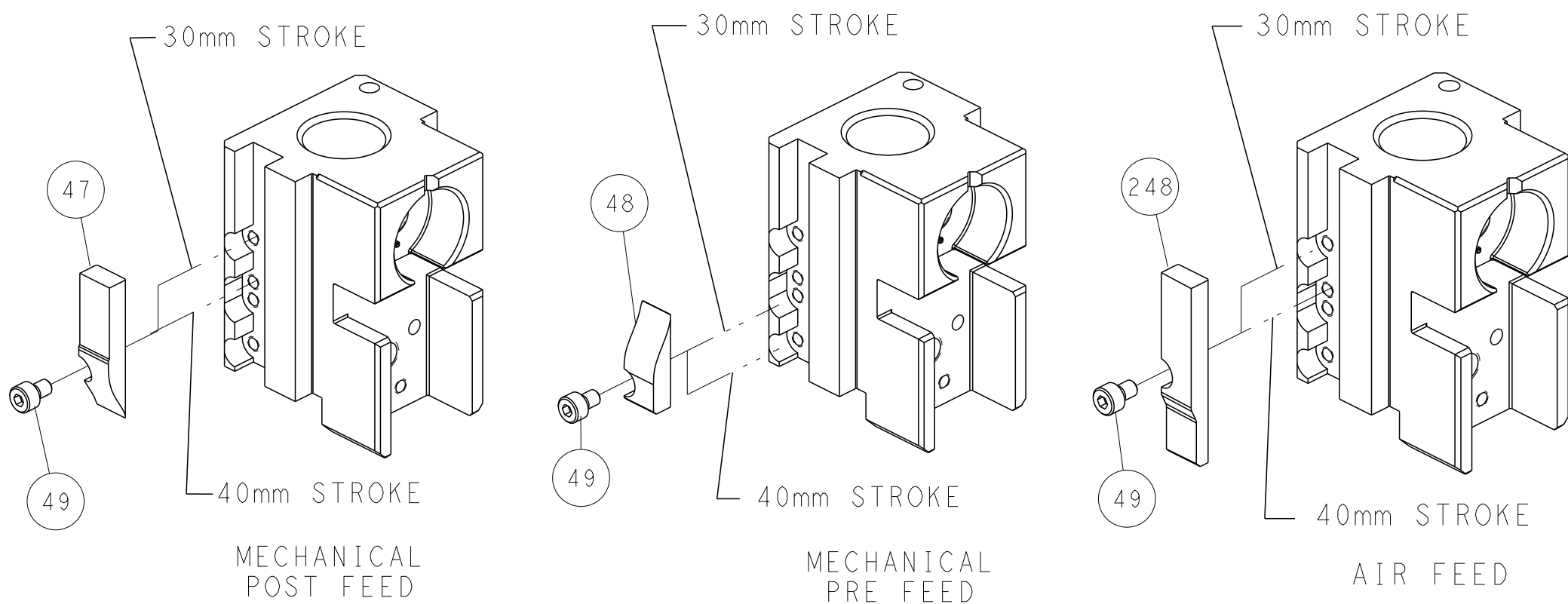
PNEUMATIC



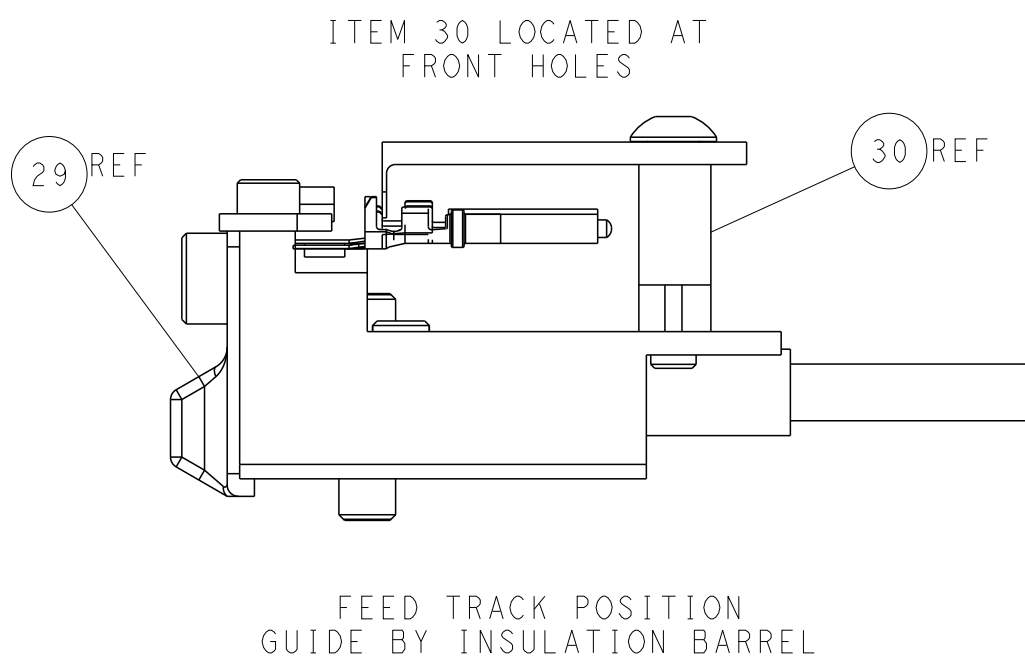
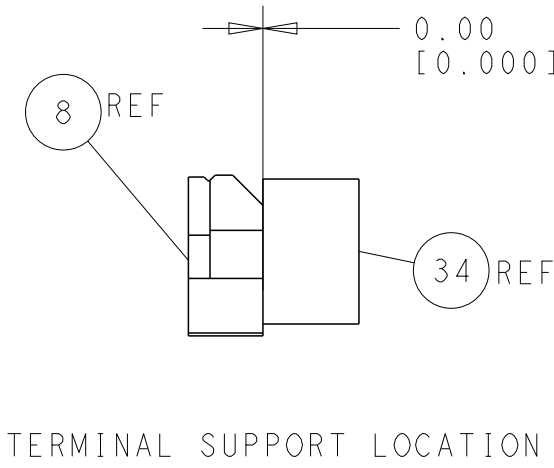
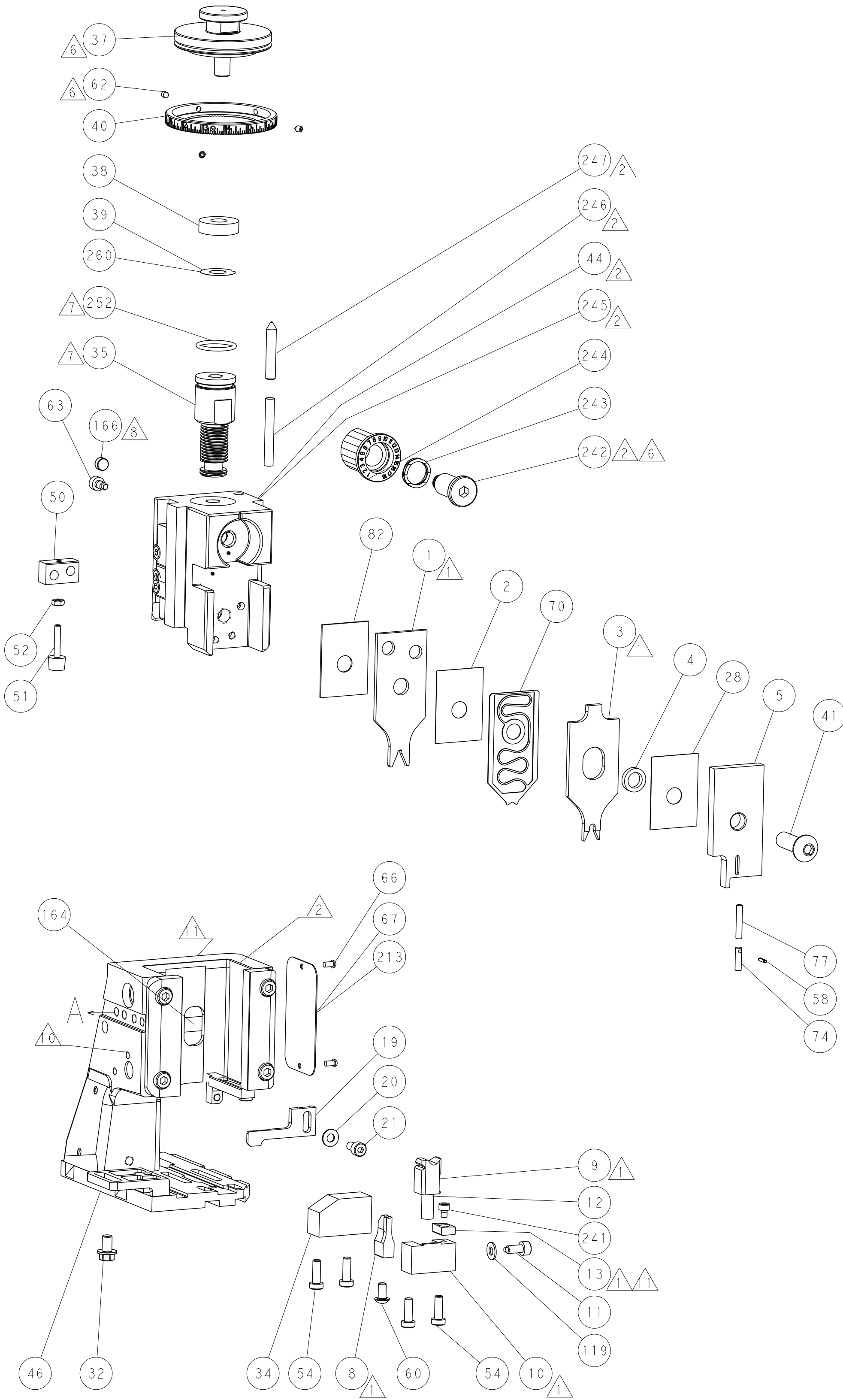
SERVO  
LATCH PLATE



CAM POSITIONS



ATLANTIC VERSION  
Shown on sheets 1 of 4 & 2 of 4  
(Pacific version shown on sheets 3 of 4 & 4 of 4)



THIS DRAWING IS UNPUBLISHED. IT IS SUBJECT TO CHANGE WITHOUT NOTICE. IT IS THE RESPONSIBILITY OF THE USER TO CONTACT THE SUPPLIER FOR THE LATEST VERSION.				DWN R. KNEPPER 23AUG2013 CHK G. BAILEY 23AUG2013 APVD M. CLIFFORD 23AUG2013				TE Connectivity Harrisburg, PA 17105-3608			
DIMENSIONS: mm				TOLERANCES UNLESS OTHERWISE SPECIFIED: 0 PLC ±.5 1 PLC ±0.13 2 PLC ±0.13 3 PLC ±0.013 4 PLC ±0.0001 ANGLES FINISH				NAME Ocean Side Feed Applicator			
MATERIAL				WEIGHT				SIZE A1 00779 C=2266100			
Customer Accessible Production Drawing				SCALE 1:2				SHEET 2 OF 4			
								REV A3			



PNEUMATIC

250  
249  
238  
163  
59  
136  
137  
172  
56

SERVO FEEDER  
NOT INCLUDED

30mm STROKE

142

49

MECHANICAL POST FEED

30mm STROKE

48

49

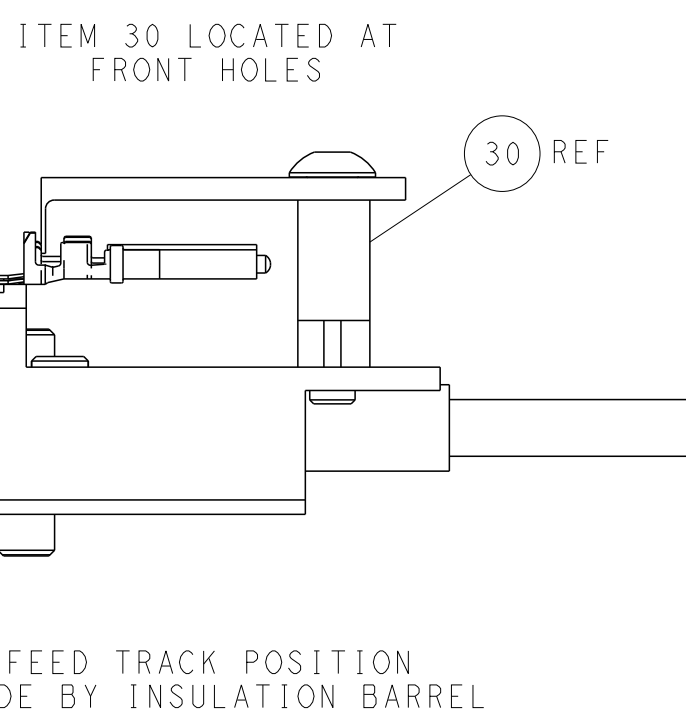
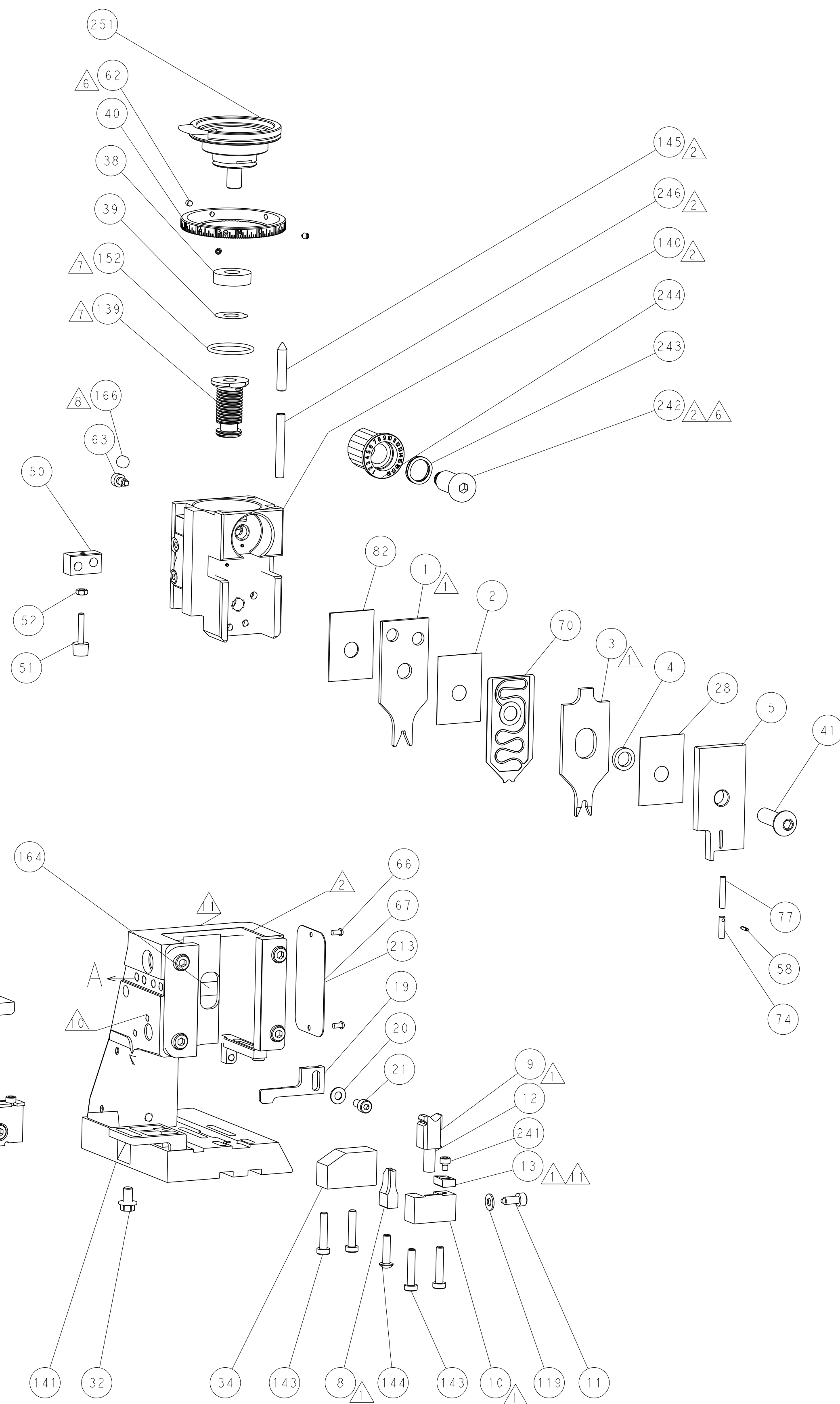
MECHANICAL PRE FEED

30mm STROKE

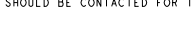
151

49

AIR FEED



Shown on sheets 3 of 4 & 4 of 4  
(Atlantic version shown on sheets 1 of 4 & 2 of 4)

THIS DRAWING IS A CONTROLLED DOCUMENT FOR TFC TECHNOLOGIES CORPORATION IT IS SUBJECT TO THE TERMS AND CONDITIONS OF THE PURCHASE ORDER OR AGREEMENT SHOULD BE CONTACTED FOR THE LATEST REVISION						DWN: 23AUG2013			
						CHR: R.KNEPPER		TE Connectivity	
						CBA: C.BAILEY		Harrisburg, PA 17105-3608	
DIMENSIONS:						APVD: M.CLIFFORD		NAME	
TOLERANCES UNLESS OTHERWISE SPECIFIED:						PRODUCT SPEC		Ocean Side Feed	
mm						APPLICATION SPEC		Applicator	
						SIZE		RESTRICTED TO	
Ø PLC ± 1 PLC ±0.5 2 PLC ±0.13 3 PLC ±0.003 4 PLC ±0.0001 ANGLES ±°						CAGE CODE		DRAWING NO.	
MATERIAL FINISH						WEIGHT		A   00779   C=2266100	
								-	
						Customer Accessible Production Drawing		SCALE 1:2 SHEET 4 OF 4 REV A3	