
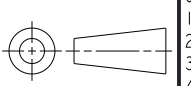


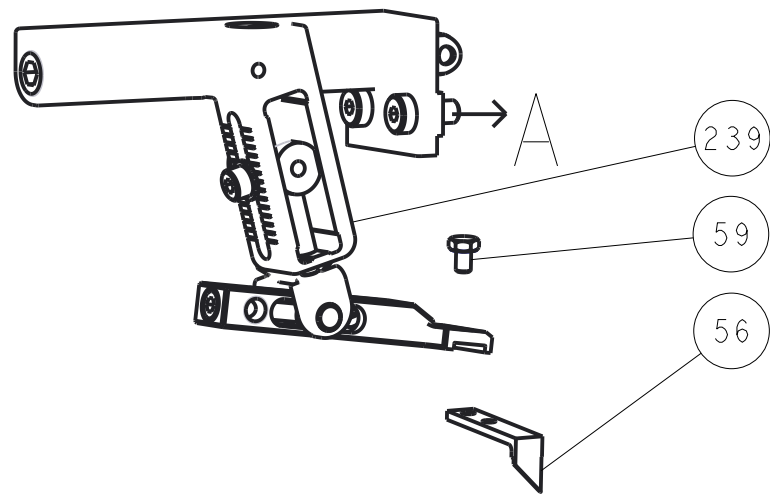
ATLANTIC VERSION
Shown on sheets 1 of 4 & 2 of 4
(Pacific version shown on sheets 3 of 4 & 4 of 4)

					3				1			
SET UP GAUGE 2119599-1					LOC A	DIST 66	REVISONS					
					P	CTR	DESCRIPTION			DATE	DRN	APVD
						C2	ECR-15-004154			19MAR2015	KH	UG
6	-	1	-	1	1	1	2119798-1	DETENT PIN				247
	-	1	-	1	1	1	1-22279-3	SPRING, COMPRESSION				246
	-	-	1	-	-	-	2119758-1	RAM, AMP STYLE, SIDE FEED, NON-ADJ.				245
	-	1	1	1	1	1	2119082-9	CAM, SNAIL, INSULATION ADJUSTMENT				244
	-	1	1	1	1	1	2079764-1	WASHER, WAVE SPRING, CREST-TO-CREST				243
	-	1	1	1	1	1	2119083-1	RETAINER, INSULATION DIAL				242
	-	1	1	1	1	1	7-18023-7	SCR, SKT HD CAP M3 X 4.0				241
	-	-	2	2	-	-	2168400-6	SHCS, LOW HEAD, RoHS, M5 X 16				24
	-	-	-	-	-	1	2119580-1	MECHANICAL FEED ASSEMBLY				239
	-	-	-	-	1	-	2063440-1	AIR FEED MODULE				238
-	-	1	1	-	-	2119740-2	TAG, IDENTIFICATION				213	
-	-	1	1	1	-	1901094-3	SPACER, FEEDER				198	
-	1	1	1	1	1	993111-1	PIN, SLOTTED SPRING 3.0 X 20.0				177	
-	1	1	1	1	1	8-22280-7	SPRING, COMPRESSION				176	
-	1	1	1	1	1	1752353-2	GUIDE PIN, HOLDDOWN				175	
-	1	1	1	1	1	1901680-2	GUIDE PIN, HOLDDOWN				174	
-	-	-	-	2	-	21045-3	RING, RETAIN, EXTERN, 3/16 CRESCENT				172	
-	1	1	1	1	1	994969-1	MAGNET, RARE EARTH HIGH ENERGY				166	
-	REF	REF	REF	REF	REF	994970-2	COUNTER, MAGNETIC				164	
-	-	-	-	1	-	240638-1	SPRING, FEED FINGER				163	
-	-	-	-	1	-	3-23627-7	PIN, RETAIN, GRVD, 3/16 X .854				137	
-	-	-	-	1	-	2119799-1	HOLDER, FEED FINGER, AF				136	
-	-	REF	REF	-	-	SEE NOTE 4	MEMORY CHIP, PROGRAMMED				135	
-	-	1	1	-	-	1633743-1	SERVO FEED LATCH ASM				133	
-	1	1	1	1	1	1-18028-2	WASHER, FLAT, REG M4				119	
-	-	REF	REF	-	-	2119944-1	FEED FINGER ASSEMBLY, SF				117	
-	1	1	1	1	1	455888-4	SPACER, CRIMPER				82	
-	1	1	1	1	1	2119956-1	DOCUMENTATION PACKAGE				71	
-	1	-	-	1	1	2119740-1	TAG, IDENTIFICATION				67	
-	2	2	2	2	2	2168078-1	SCREW, DRIVE, RH, RoHS, 2 x .188				66	
-	1	-	1	1	1	2119793-1	LIMITER, ADJUSTMENT BOLT				63	
6	-	3	-	3	3	3	992763-5	SCR, SET, SOC, CONE POINT, M3 x 4.0				62
	-	1	1	1	1	1	2079383-4	SCR, BHSC, RoHS (M4 X 8)				60
-	-	-	-	1	1	5-18022-5	SCR, HEX HD CAP, M4 X 6.0				59	
-	-	-	-	1	1	1338685-1	PAWL, FEED				56	
-	4	4	4	4	4	2168400-1	SHCS, LOW HEAD, RoHS, M4 X 12				54	
-	1	1	1	1	1	1-5018030-0	NUT, HEX, REG, RoHS, M3.5				52	
-	1	1	1	1	1	1901681-1	HOLDDOWN, TERMINAL				51	
6	-	1	1	1	1	1	1-1752354-8	STANDOFF, HOLD-DOWN				50
	-	-	-	-	1	2	18023-9	SCR, SKT HD CAP M4 X 6.0				49
-	-	-	-	-	1	2119652-1	FEED CAM, PRE FEED				48	
-	-	-	-	-	1	2119653-1	FEED CAM, POST FEED				47	
-	1	1	1	1	1	2119656-9	APPLICATOR BASIC ASSEMBLY, SF				46	
-	1	-	1	1	1	2119370-1	RAM, AMP STYLE, SIDE FEED				44	
-	1	1	1	1	1	2079383-7	SCR, BHSC, RoHS (M8 X 25)				41	
-	1	-	1	1	1	2119645-1	DISC, NUMBERED FA WIRE ADJUSTMENT				40	
-	1	-	1	1	1	2119957-1	APPLICATOR SHIM PACK				39	
-	1	1	1	1	1	2119644-1	RAM WASHER, PRECISION				38	
6	-	1	1	1	1	1	2119085-1	FA HEAD, ATLANTIC STYLE				37
	-	1	-	1	1	1	2119092-1	BOLT, ADJUSTMENT				35
-	1	1	1	1	1	2-1752356-0	SUPPORT, TERMINAL				34	
-	2	2	2	2	2	2079383-5	SCR, BHSC, RoHS (M4 X 20)				33	
-	1	1	1	1	1	2161328-1	HEX HEAD, FLANGED, M5 x 8mm LONG				32	
-	1	1	1	1	1	1320908-3	SPACER, STRIP GUIDE				30	
-	1	1	1	1	1	2119959-1	ASSEMBLY, STRIP GUIDE				29	
-	1	1	1	1	1	1-455888-0	SPACER, CRIMPER				28	
-	1	1	1	1	1	1320928-6	STRIP GUIDE				24	
-	1	1	1	1	1	2168083-2	SCR, SKT HD CAP, RoHS, M4 X 8.0				21	
-	1	1	1	1	1	1-18028-2	WASHER, FLAT, REG M4				20	
1	-	1	1	1	1	1	2119533-1	STRIPPER, SIDE FEED				19
	-	1	1	1	1	1	2119806-1	INSERT, SHEAR				13
-	1	1	1	1	1	3-22280-3	SPRING, COMPRESSION				12	
-	1	1	1	1	1	1-356885-4	STOP, SHEAR				11	
1	-	1	1	1	1	1	2119805-1	SHEAR HOLDER, FRONT				10
	-	1	1	1	1	1	454276-5	FLOATING SHEAR, FRONT				9
1	1	1	1	1	1	1	3-1333204-2	ANVIL, COMBINATION				8
	-	-	-	-	-	-	-					7
-	-	-	-	-	-	-	-					6
-	1	1	1	1	1	2119757-4	DEPRESSOR, SHEAR				5	
-	1	1	1	1	1	238011-4	BLOCK, CRIMPER SPACER				4	
1	1	1	1	1	1	1	1633965-2	CRIMPER, INSULATION O PREMIUM				3
	-	1	1	1	1	1	455888-5	SPACER, CRIMPER				2
1	1	1	1	1	1	1	1-456405-3	CRIMPER, WIRE PREMIUM				1
	-77	-7	-6	-5	-2	-1	PART NO				DESCRIPTION	ITEM NO

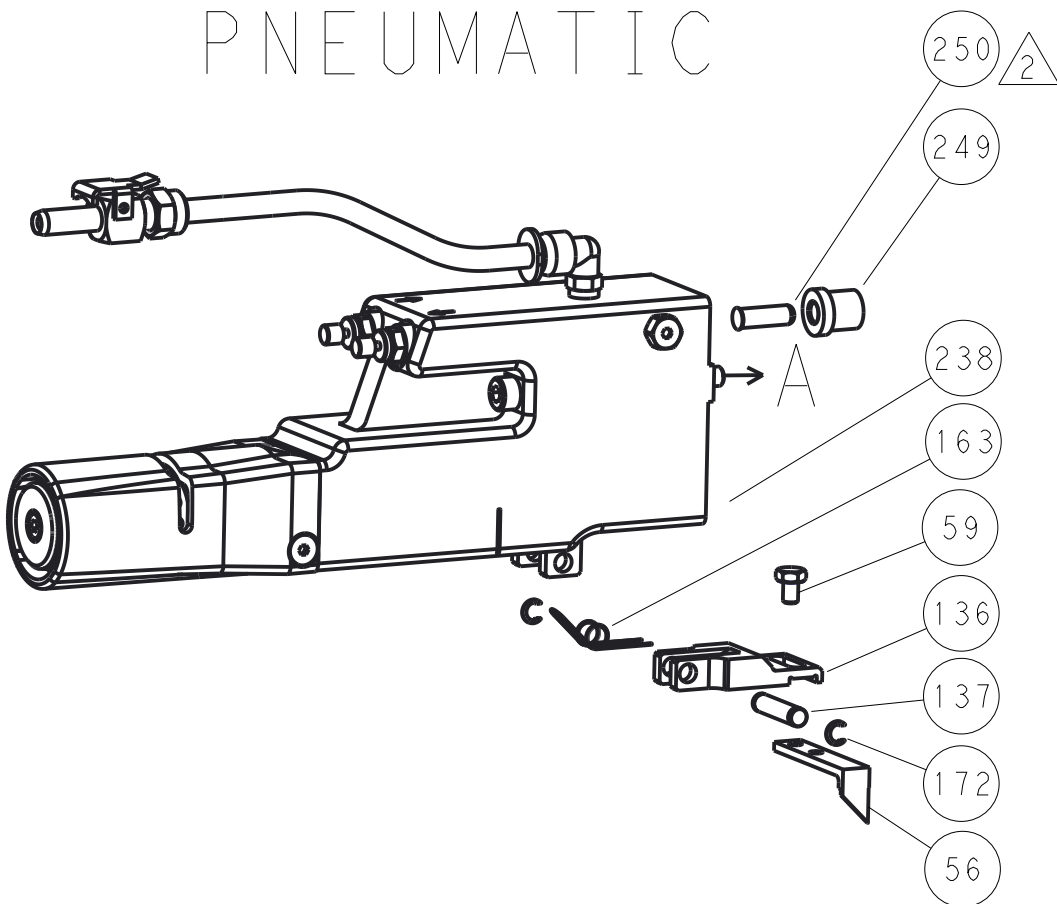
PART DRAWING IS A CONTROLLED DOCUMENT FOR THE CONNECTIVITY CORPORATION IT IS SUBJECT TO CHANGE AND NOT BE USED FOR THE LATEST REVISION GROUPS BE CONTROLLED FOR THE LATEST REVISION					DWN Y.YIN 21NOV2011		 TE Connectivity Harrisburg, PA 17105-3608						
DIMENSIONS:					CHK C.BAILEY 21NOV2011							NAME	
mm					APVD S.XI 21NOV2011								
					PRODUCT SPEC		Ocean Side Feed Applicator						
					-								
					APPLICATION SPEC								
MATERIAL					WEIGHT		SIZE		RESTRICTED TO				
FINISH					-		A 00779 C=2151376		-				
Customer Accessible Production Drawing							SCALE		SHEET		REV		
							1:2		1		OF 4		

LOC	DIST	REVISIONS					
		P	LTR	DESCRIPTION	DATE	DWN	APVD
A	66	-	-	SEE SHEET 1	-	-	-

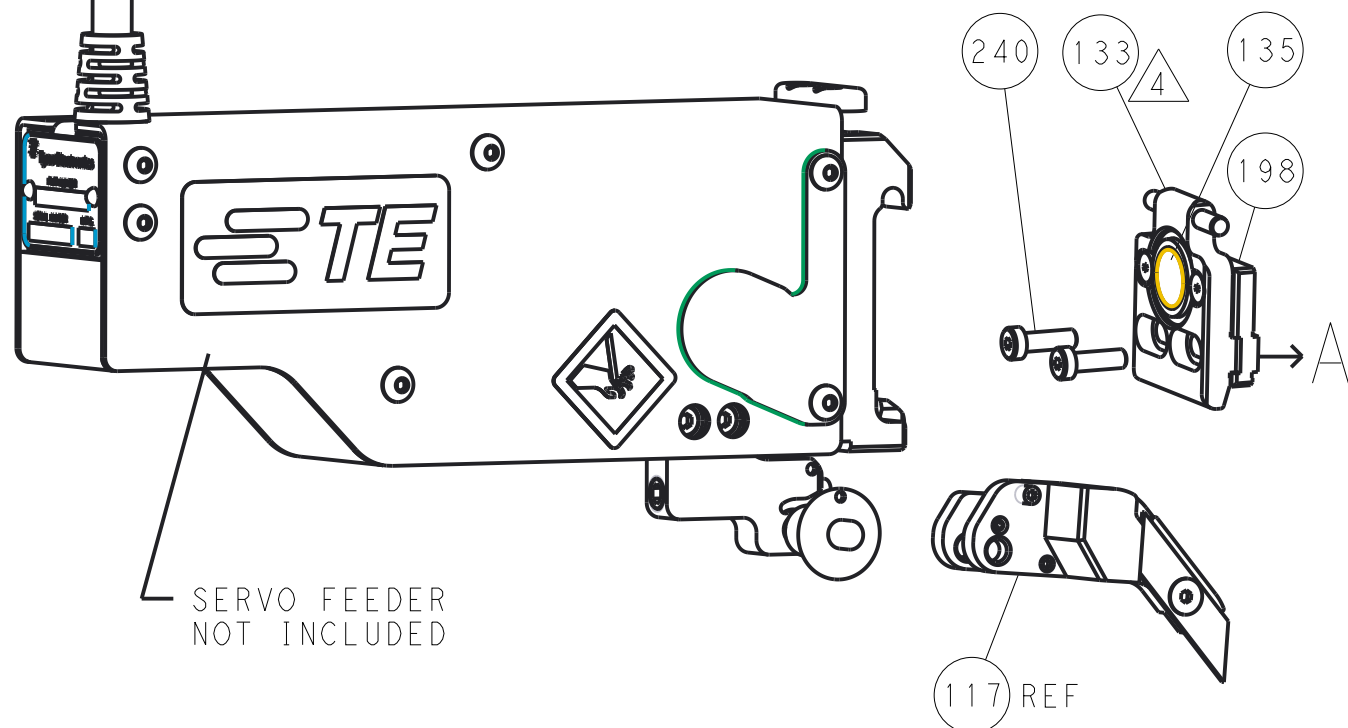
FEED TYPE MECHANICAL



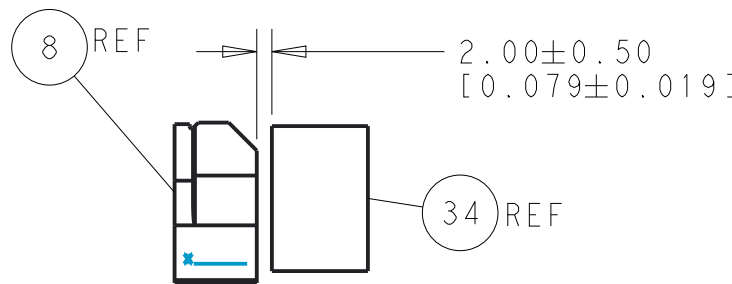
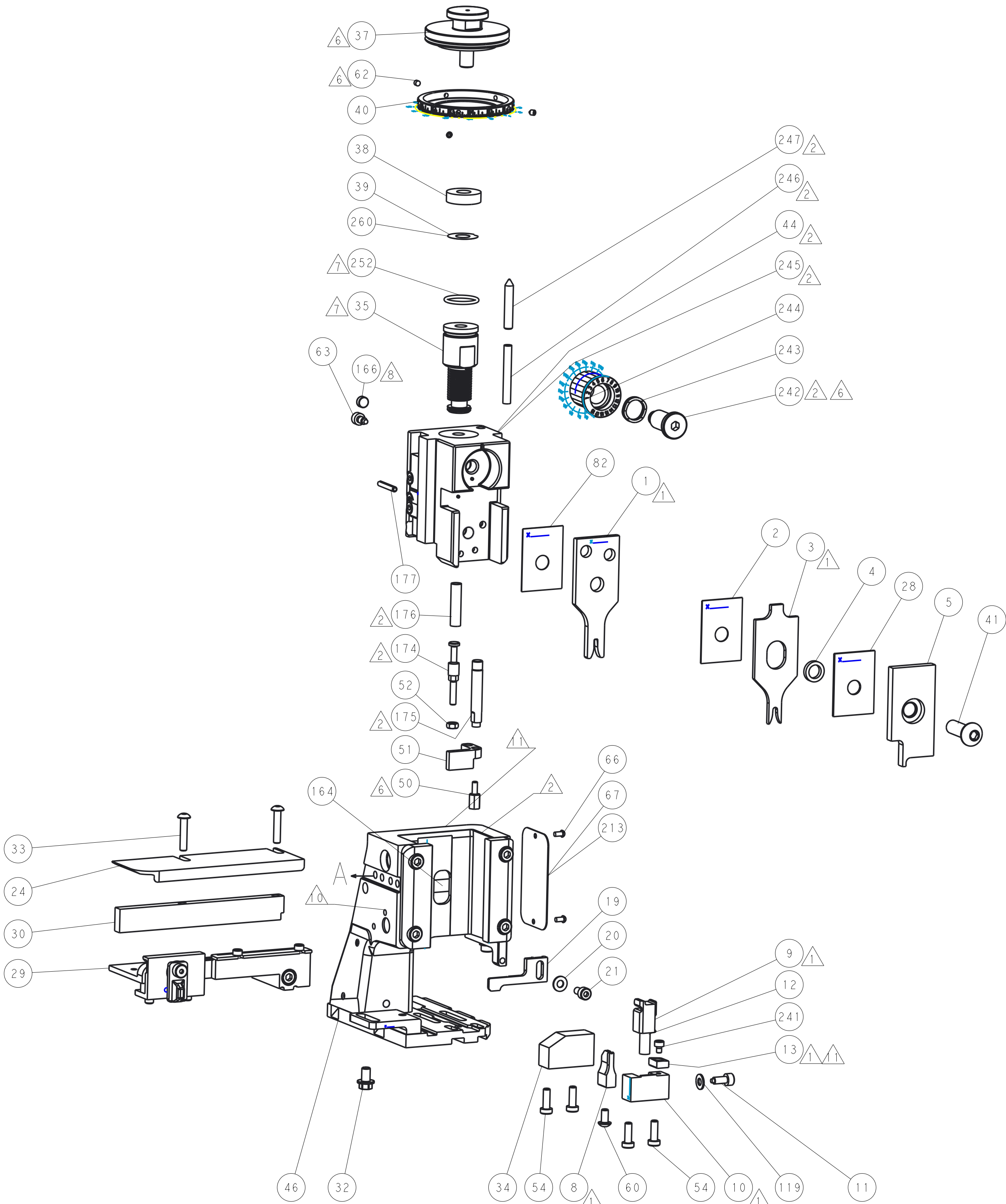
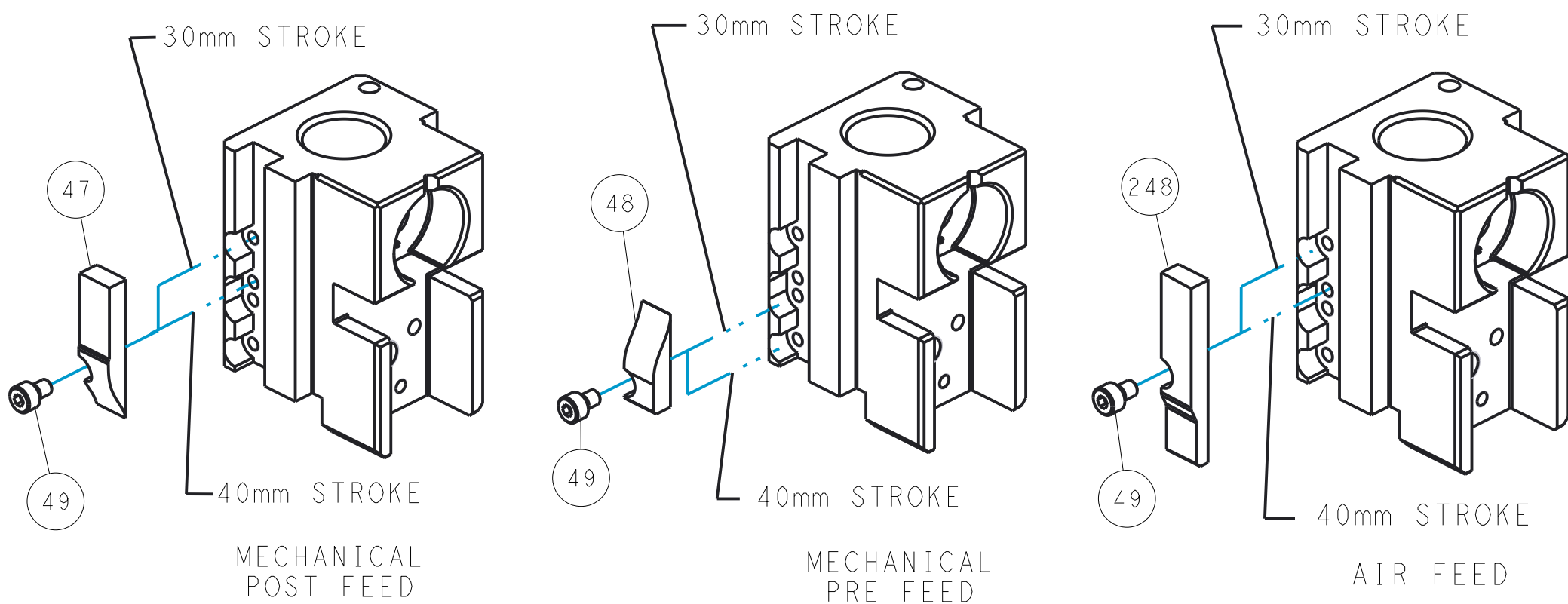
PNEUMATIC



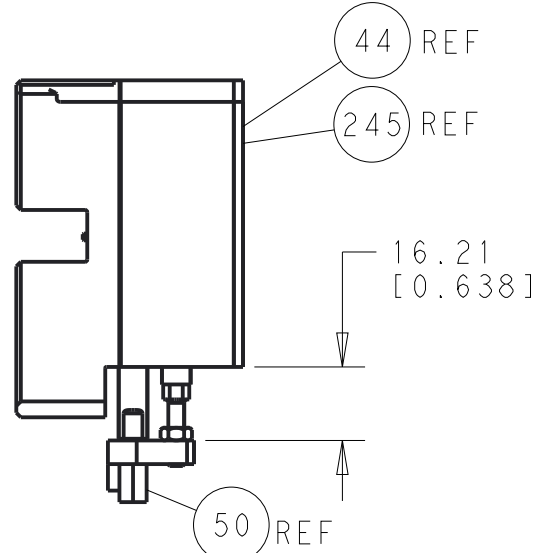
SERVO LATCH PLATE



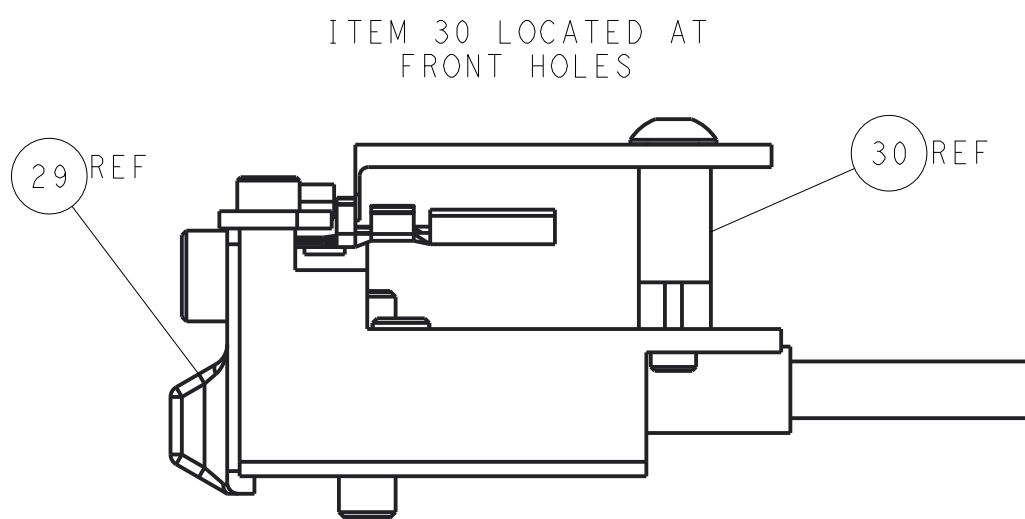
CAM POSITIONS



TERMINAL SUPPORT LOCATION



HOLDDOWN SET-UP



FEED TRACK POSITION
GUIDE BY INSULATION BARREL

ATLANTIC VERSION
Shown on sheets 1 of 4 & 2 of 4
(Pacific version shown on sheets 3 of 4 & 4 of 4)

DIMENSIONS:		TOLERANCES UNLESS OTHERWISE SPECIFIED:		DWN Y. YIN 21NOV2011		TE Connectivity	
mm		0 PLC ±.5		CHK G. BAILEY 21NOV2011		Harrisburg, PA 17105-3608	
		1 PLC ±0.5		APVD S. XI 21NOV2011		NAME Ocean Side Feed Applicator	
		2 PLC ±0.13		PRODUCT SPEC		SIZE CAGE CODE DRAWING NO	
		3 PLC ±0.13		APPLICATION SPEC		A1 00779 ©=2151376	
		4 PLC ±0.001		WEIGHT		RESTRICTED TO	
MATERIAL		FINISH		Customer Accessible Production Drawing		SCALE 1:2 SHEET 2 OF 4 REV C2	

8

7

6

5

4

3

2

1

THIS DRAWING IS UNPUBLISHED.

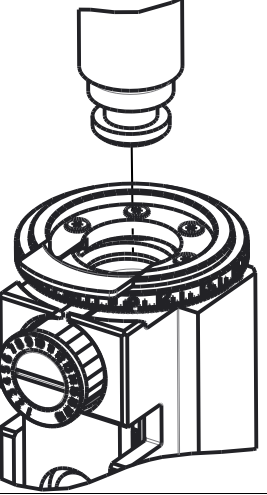
RELEASED FOR PUBLICATION

20

© COPYRIGHT 20

BY TYCO ELECTRONICS CORPORATION. ALL RIGHTS RESERVED.

PACIFIC VERSION
TERMINATOR
INTERFACE ADAPTER



PART
NUMBER

2-2151376-1

REVISION

C

DESCRIPTION

FINE CRIMP HEIGHT ADJUST

FEED TYPE

MECHANICAL

CONVERT TO

PNEUMATIC FEED

PART NUMBERS REQUIRED

2119950-1

2-2151376-2

C

FINE CRIMP HEIGHT ADJUST

PNEUMATIC

MECHANICAL FEED

2119949-1

2-2151376-5

C

FINE CRIMP HEIGHT ADJUST

SERVO LATCH PLATE⁴

MECHANICAL FEED

2119949-1

2-2151376-7

C

FINE CRIMP HEIGHT ADJUST

NONE

-

2119950-1

7-2151376-7

A

CRIMP TOOLING KIT

-

-

-

APPLICATOR DATA

CRIMP	SIZE	TYPE
WIRE	2.03 mm [.080]	F
INSUL	3.05 mm [.120]	O

APPLICATOR INSTRUCTIONS

408-10389

TERMINAL DATA: TE TERMINAL

TE CRIMP SPECIFICATION

TERMINAL NAME: CONTACT AMPSEAL

WIRE STRIP LENGTH

4.70-5.50 mm [.185-.217 IN]

INSULATION DIAMETER RANGE

Ø1.70-2.70 mm [.067-.106 IN]

TERMINAL APPLICATION SPECIFICATION

114-16016


-

-


TERMINALS APPLIED

TE TERMINAL	TE TERMINAL	TE TERMINAL	TE TERMINAL
770520-1	770520-2	770520-3	770520-4

WIRE SIZE



CRIMP HEIGHT mm [INCH]



CRIMP HEIGHT REFERENCE SETTING⁹

1.50mm2

1.40+/-0.05 [.055+/- .002]

5.0

16 AWG OR 1.40mm2

1.40+/-0.05 [.055+/- .002]

5.0

1.00mm2

1.28+/-0.05 [.050+/- .002]

6.3

18 AWG OR 0.80mm2

1.27+/-0.05 [.050+/- .002]

6.5

20 AWG OR 0.50mm2

1.17+/-0.08 [.046+/- .003]

7.5

RECOMMENDED SPARE PARTS

GREASE BEARING SURFACES LIGHTLY

3. LUBRICATE DAILY PER THE APPLICATOR INSTRUCTION SHEET SUPPLIED WITH THE APPLICATOR.

4. APPLICATOR SPECIFIC DATA TO BE ENTERED INTO BLANK MEMORY CHIP AT ASSEMBLY. SEE BELOW FOR PART NUMBER:
MECHANICAL FEED WITH "SMART APPLICATOR" CONVERSION: 8-2151376-4
PNEUMATIC FEED WITH "SMART APPLICATOR" CONVERSION: 8-2151376-4
SERVO FEED WITH "FINE CRIMP HEIGHT ADJUST": 8-2151376-5

5. ADJUSTMENT OF THE STRIPPER MAY BE REQUIRED WHEN MOVING THE APPLICATOR BETWEEN BENCH AND LEAD MAKER APPLICATION.

6. APPLY PART NUMBER 1-23419-5 LOCTITE TO THREADS OF ITEM 62.
APPLY PART NUMBER 2-23419-6 LOCTITE TO THREADS OF ITEM 242.

6. GREASE THREADS, GROOVE AND O-RING ON ITEMS 139 & 152.

8. MAGNET MUST BE ORIENTED CORRECTLY IN ORDER TO PROPERLY ACTUATE THE COUNTER.

9. CRIMP HEIGHT REFERENCE SETTING WAS THE SETTING USED WHEN THE APPLICATOR WAS QUALIFIED AT THE FACTORY. ADJUSTMENT MAY BE NECESSARY WHEN RUNNING APPLICATOR IN THE FIELD.

10. SPARE FEED CAM STORAGE LOCATION REFER TO INSTRUCTION SHEET FOR ADDITIONAL INFORMATION.

11. TO CONVERT THE APPLICATOR TO A NON-CARRIER CUTTING STYLE, REMOVE ITEM 13 AND ATTACH TO THE LOCATION ON BACK SIDE OF THE HOUSING. REFER TO INSTRUCTION SHEET FOR ADDITIONAL INFORMATION.

12. THIS CRIMP PARAMETER IS PROVIDED TO MEET A CUSTOM AND UNIQUE CUSTOMER REQUIREMENT. IT HAS BEEN EVALUATED AND IS CONDITIONALLY SPECIFIED BY TE CONNECTIVITY. THIS CUSTOMIZED CRIMP PARAMETER IS NOT LISED AS AN APPROVED APPLICATION WITHIN A TE CONNECTIVITY APPLICATION SPECIFICATION; HOWEVER, IT HAS BEEN VALIDATED ACCORDING TE CONNECTIVITY SPECIFICATIONS 109-18079(TEST GROUP 1) AND 114-18022. **TE CONNECTIVITY EXPRESSLY DISCLAIMS ANY AND ALL WARRANTIES THAT THE PRODUCT WILL PERFORM SIMILARLY TO VALIDATED AND APPROVED APPLICATIONS, AS STATED WITHIN TE CONNECTIVITY APPLICATION SPECIFICATIONS, INCLUDING BUT NOT LIMITED TO IMPLIED WARRANTIES OF MERCHANTABILITY OR FITNESS FOR PARTICULAR PURPOSE.**AS SUCH, IT IS HIGHLY RECOMMENDED THAT THE CUSTOMER PERFORM FURTHER DETAILED EVALUATION TO ASSESS PRODUCT PERFORMANCE IN THE SPECIFIC APPLICATION.

TERMINAL DATA: TE TERMINAL

TE CRIMP SPECIFICATION

TERMINAL NAME: CONTACT AMPSEAL

WIRE STRIP LENGTH

4.70-5.50 mm [.185-.217 IN]

INSULATION DIAMETER RANGE

Ø1.70-2.70 mm [.067-.106 IN]

TERMINAL APPLICATION SPECIFICATION


-

-


TERMINALS APPLIED

TE TERMINAL	TE TERMINAL	TE TERMINAL	TE TERMINAL
770520-1	770520-2	770520-3	770520-4

WIRE SIZE



CRIMP HEIGHT mm [INCH]



CRIMP HEIGHT REFERENCE SETTING⁹

0.75mm2

1.27+/-0.05 [.050+/- .002]

6.5

-

1

1

1

1

2119782-1

FINE ADJUST HEAD ASM, PACIFIC STYLE

251

-

-

-

1

-

2119640-1

PUSH ROD, AIR FEED

250

-

-

-

1

-

2079988-1

BUSHING, LCH5-12, MISUMI

249

-77

-27

-25

-22

-21

PART NO

DESCRIPTION

ITEM NO

PACIFIC VERSION

Shown on sheets 3 of 4 & 4 of 4

(Atlantic version shown on sheets 1 of 4 & 2 of 4)

SET UP GAUGE

2119599-1

LOC

A

DIST

66

REVISIONS

P	LTR	DESCRIPTION	DATE	OWN	APVD
-	-	SEE SHEET 1	-	-	-
-	-	-	-	-	-
-	-	-	-	-	-

-

1

1

1

1

1-22279-3

SPRING, COMPRESSION

246

-

1

1

1

1

2119082-9

CAM, SNAIL, INSULATION ADJUSTMENT

244

-

1

1

1

1

2079764-1

WASHER, WAVE SPRING, CREST-TO-CREST

243

-

1

1

1

1

2119083-1

RETAINER, INSULATION DIAL

242

-

1

1

1

1

7-18023-7

SCR, SKT HD CAP M3 X 4.0

241

-

-

2

-

-

2168400-6

SHCS, LOW HEAD, RoHS, M5 X 16

240

-

-

-

-

1

2119580-1

MECHANICAL FEED ASSEMBLY

239

-

-

-

1

-

2063440-1

AIR FEED MODULE

238

-

-

1

-

-

2119740-2

TAG,IDENTIFICATION

213

-

-

1

-

-

1901094-3

SPACER, FEEDER

198

-

1

1

1

1

993111-1

PIN, SLOTTED SPRING 3.0 X 20.0

177

-

1

1

1

1

8-22280-7

SPRING, COMPRESSION

176

-

1

1

1

1

1752353-2

GUIDE PIN,HOLDDOWN

175

-

1

1

1

1

1901680-2

GUIDE PIN,HOLDDOWN

174

-

-

-

2

-

21045-3

RING, RETAIN, EXTERN, 3/16 CRESCENT

172

-

1

1

1

1

994969-1

MAGNET, RARE EARTH HIGH ENERGY

166

-

REF

REF

REF

REF

994970-2

COUNTER, MAGNETIC

164

-

-

-

1

-

240638-1

SPRING, FEED FINGER

163

-

1

1

1

1

8-21084-1

O-RING, .801 ID, .070 DIA. MAT.

152

-

-

-

1

-

2119641-2

FEED CAM, AIR FEED

151

-

1

1

1

1

2119798-2

DETENT PIN

145

-

1

1

1

1

2079383-8

SCR, BHSC, RoHS (M4 X 16)

144

-

4

4

4

4

2168400-5

SHCS, LOW HEAD, RoHS, M4 X 20

143

-

-

-

-

1

2119653-2

FEED CAM, POST FEED

142

-

1

1

1

1

1-2119656-0

APPLICATOR BASIC ASSEMBLY, SF

141

-

1

1

1

1

2119650-1

RAM, ASIAN STYLE, SIDE FEED

140

-

1

1

1

1

2119092-2

BOLT, ADJUSTMENT

139

-

-

-

1

-

3-23627-7

PIN, RETAIN, GRVD, 3/16 X .854

137

-

-

-

1

-

2119799-1

HOLDER,FEED FINGER, AF

136

-

-

REF

-

-

SEE NOTE 4

MEMORY CHIP, PROGRAMMED

135

-

-

1

-

-

1633743-1

SERVO FEED LATCH ASM

133

-

1

1

1

1

1-18028-2

WASHER, FLAT, REG M4

119

-

-

REF

-

-

2119944-1

FEED FINGER ASSEMBLY,SF

117

-

1

1

1

1

455888-4

SPACER, CRIMPER

82

-

1

1

1

1

2119956-1

DOCUMENTATION PACKAGE

71

-

1

-

1

1

2119740-1

TAG,IDENTIFICATION

67

-

2

2

2

2

2168078-1

SCREW, DRIVE, RH, RoHS, 2 x .188

66

-

1

1

1

1

2119793-1

LIMITER, ADJUSTMENT BOLT

63

-

3

3

3

3

992763-5

SCR, SET, SOC, CONE POINT, M3 x 4.0

62

-

-

-

1

1

5-18022-5

SCR, HEX HD CAP, M4 X 6.0

59

-

-

-

-

1

1338685-1

PAWL, FEED

56

-

1

1

1

1

1-5018030-0

NUT, HEX, REG, RoHS, M3.5

52

-

1

1

1

1

1901681-1

HOLDDOWN, TERMINAL

51

-

1

1

1

1

1-1752354-8

STANDOFF,HOLD-DOWN

50

-

-

-

1

2

18023-9

SCR, SKT HD CAP M4 X 6.0

49

-

-

-

-

1

2119652-1

FEED CAM, PRE FEED

48

-

1

1

1

1

2079383-7

SCR, BHSC, RoHS (M8 X 25)

41

-

1

1

1

1

2119645-1

DISC, NUMBERED FA WIRE ADJUSTMENT

40

-

1

1

1

1

2119957-1

APPLICATOR SHIM PACK

39

-

1

1

1

1

2119644-1

RAM WASHER, PRECISION

38

-

1

1

1

1

2-1752356-0

SUPPORT, TERMINAL

34

-

2

2

2

2

2079383-5

SCR, BHSC, RoHS (M4 X 20)

33

-

1

1

1

1

2161328-1

HEX HEAD, FLANGED, M5 x 8mm LONG

32

-

1

1

1

1

1320908-3

SPACER, STRIP GUIDE

30

-

1

1

1

1

2119959-1

ASSEMBLY, STRIP GUIDE

29

-

1

1

1

1

1-455888-0

SPACER, CRIMPER

28

-

1

1

1

1

1320928-6

STRIP GUIDE

24

-

1

1

1

1

2168083-2

SCR, SKT HD CAP, RoHS, M4 X 8.0

21

-

1

1

1

1

1-18028-2

WASHER, FLAT, REG M4

20

-

1

1

1

1

2119533-1

STRIPPER, SIDE FEED

19

-

1

1

1

1

2119806-1

INSERT, SHEAR

13

-

1

1

1

1

3-22280-3

SPRING, COMPRESSION

12

-

1

1

1

1

1-356885-4

STOP, SHEAR

11

-

1

1

1

1

2119805-1

SHEAR HOLDER, FRONT

10

-

1

1

1

1

454276-5

FLOATING SHEAR, FRONT

9

-

1

1

1

1

1-1333204-2

ANVIL, COMBINATION

8

-

-

-

-

-

-

-

7

-

-

-

-

-

-

-

6

-

1

1

1

1

2119757-4

DEPRESSOR, SHEAR

5

-

1

1

1

1

238011-4

BLOCK, CRIMPER SPACER

4

-

1

1

1

1

1633965-2

CRIMPER, INSULATION O PREMIUM

3

-

1

1

1

1

455888-5

SPACER, CRIMPER

2

-

1

1

1

1

1-456405-3

CRIMPER, WIRE PREMIUM

1

-77

-27

-25

-22

-21

PART NO

DESCRIPTION


ITEM NO

TE CONNECTIVITY CORPORATION

111 IS SUBJECT TO CHANGE WITHOUT NOTICE. THE CUSTOMER'S ORGANIZATION SHOULD BE CONTACTED FOR THE LATEST NOTATION.

DIMENSIONS:

mm



0 PLC ±.5
1 PLC ±0.5
2 PLC ±0.13
3 PLC ±0.013
4 PLC ±0.0001
FINISH

TOLERANCES UNLESS OTHERWISE SPECIFIED:

±.5
±0.13
±0.013
±0.0001
±.5

MATERIAL

-

FINISH

-

OWN

T.YIN

01JUN2011

CHK

G.BAILEY

01JUN2011

APVD

S.XI

01JUN2011

PRODUCT SPEC

-

APPLICATION SPEC

-

WEIGHT

-

Customer Accessible Production Drawing

SCALE

1:2

SHEET

3

OF

4

REV

C2

TE Connectivity

Harrisburg, PA 17105-3608

NAME

Ocean Side Feed

Applicator

SIZE

A1

CAGE CODE

00779

DRAWING NO

©=2151376

RESTRICTED TO

-

8

7

6

5

4

3

2

1

THIS DRAWING IS UNPUBLISHED.

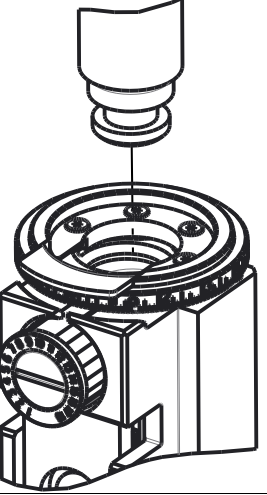
RELEASED FOR PUBLICATION

20

© COPYRIGHT 20

BY TYCO ELECTRONICS CORPORATION. ALL RIGHTS RESERVED.

PACIFIC VERSION
TERMINATOR
INTERFACE ADAPTER



PART
NUMBER

2-2151376-1

REVISION

C

DESCRIPTION

FINE CRIMP HEIGHT ADJUST

FEED TYPE

MECHANICAL

CONVERT TO

PNEUMATIC FEED

PART NUMBERS REQUIRED

2119950-1

2-2151376-2

C

FINE CRIMP HEIGHT ADJUST

PNEUMATIC

MECHANICAL FEED

2119949-1

2-2151376-5

C

FINE CRIMP HEIGHT ADJUST

SERVO LATCH PLATE⁴

MECHANICAL FEED

2119949-1

2-2151376-7

C

FINE CRIMP HEIGHT ADJUST

NONE

-

2119950-1

7-2151376-7

A

CRIMP TOOLING KIT

-

-

-

APPLICATOR DATA

CRIMP	SIZE	TYPE
WIRE	2.03 mm [.080]	F
INSUL	3.05 mm [.120]	O

APPLICATOR INSTRUCTIONS

408-10389

TERMINAL DATA: TE TERMINAL

TE CRIMP SPECIFICATION

TERMINAL NAME: CONTACT AMPSEAL

WIRE STRIP LENGTH

4.70-5.50 mm [.185-.217 IN]

INSULATION DIAMETER RANGE

Ø1.70-2.70 mm [.067-.106 IN]

TERMINAL APPLICATION SPECIFICATION

114-16016


-

-


TERMINALS APPLIED

TE TERMINAL	TE TERMINAL	TE TERMINAL	TE TERMINAL
770520-1	770520-2	770520-3	770520-4

WIRE SIZE



CRIMP HEIGHT mm [INCH]



CRIMP HEIGHT REFERENCE SETTING⁹

1.50mm2

1.40+/-0.05 [.055+/- .002]

5.0

16 AWG OR 1.40mm2

1.40+/-0.05 [.055+/- .002]

5.0

1.00mm2

1.28+/-0.05 [.050+/- .002]

6.3

18 AWG OR 0.80mm2

1.27+/-0.05 [.050+/- .002]

6.5

20 AWG OR 0.50mm2

1.17+/-0.08 [.046+/- .003]

7.5

RECOMMENDED SPARE PARTS

GREASE BEARING SURFACES LIGHTLY

3. LUBRICATE DAILY PER THE APPLICATOR INSTRUCTION SHEET SUPPLIED WITH THE APPLICATOR.

4. APPLICATOR SPECIFIC DATA TO BE ENTERED INTO BLANK MEMORY CHIP AT ASSEMBLY. SEE BELOW FOR PART NUMBER:
MECHANICAL FEED WITH "SMART APPLICATOR" CONVERSION: 8-2151376-4
PNEUMATIC FEED WITH "SMART APPLICATOR" CONVERSION: 8-2151376-4
SERVO FEED WITH "FINE CRIMP HEIGHT ADJUST": 8-2151376-5

5. ADJUSTMENT OF THE STRIPPER MAY BE REQUIRED WHEN MOVING THE APPLICATOR BETWEEN BENCH AND LEAD MAKER APPLICATION.

6. APPLY PART NUMBER 1-23419-5 LOCTITE TO THREADS OF ITEM 62.
APPLY PART NUMBER 2-23419-6 LOCTITE TO THREADS OF ITEM 242.

6. GREASE THREADS, GROOVE AND O-RING ON ITEMS 139 & 152.

8. MAGNET MUST BE ORIENTED CORRECTLY IN ORDER TO PROPERLY ACTUATE THE COUNTER.

9. CRIMP HEIGHT REFERENCE SETTING WAS THE SETTING USED WHEN THE APPLICATOR WAS QUALIFIED AT THE FACTORY. ADJUSTMENT MAY BE NECESSARY WHEN RUNNING APPLICATOR IN THE FIELD.

10. SPARE FEED CAM STORAGE LOCATION REFER TO INSTRUCTION SHEET FOR ADDITIONAL INFORMATION.

11. TO CONVERT THE APPLICATOR TO A NON-CARRIER CUTTING STYLE, REMOVE ITEM 13 AND ATTACH TO THE LOCATION ON BACK SIDE OF THE HOUSING. REFER TO INSTRUCTION SHEET FOR ADDITIONAL INFORMATION.

12. THIS CRIMP PARAMETER IS PROVIDED TO MEET A CUSTOM AND UNIQUE CUSTOMER REQUIREMENT. IT HAS BEEN EVALUATED AND IS CONDITIONALLY SPECIFIED BY TE CONNECTIVITY. THIS CUSTOMIZED CRIMP PARAMETER IS NOT LISED AS AN APPROVED APPLICATION WITHIN A TE CONNECTIVITY APPLICATION SPECIFICATION; HOWEVER, IT HAS BEEN VALIDATED ACCORDING TE CONNECTIVITY SPECIFICATIONS 109-18079(TEST GROUP 1) AND 114-18022. **TE CONNECTIVITY EXPRESSLY DISCLAIMS ANY AND ALL WARRANTIES THAT THE PRODUCT WILL PERFORM SIMILARLY TO VALIDATED AND APPROVED APPLICATIONS, AS STATED WITHIN TE CONNECTIVITY APPLICATION SPECIFICATIONS, INCLUDING BUT NOT LIMITED TO IMPLIED WARRANTIES OF MERCHANTABILITY OR FITNESS FOR PARTICULAR PURPOSE.**AS SUCH, IT IS HIGHLY RECOMMENDED THAT THE CUSTOMER PERFORM FURTHER DETAILED EVALUATION TO ASSESS PRODUCT PERFORMANCE IN THE SPECIFIC APPLICATION.

TERMINAL DATA: TE TERMINAL

TE CRIMP SPECIFICATION

TERMINAL NAME: CONTACT AMPSEAL

WIRE STRIP LENGTH

4.70-5.50 mm [.185-.217 IN]

INSULATION DIAMETER RANGE

Ø1.70-2.70 mm [.067-.106 IN]

TERMINAL APPLICATION SPECIFICATION


-

-


TERMINALS APPLIED

TE TERMINAL	TE TERMINAL	TE TERMINAL	TE TERMINAL
770520-1	770520-2	770520-3	770520-4

WIRE SIZE



CRIMP HEIGHT mm [INCH]



CRIMP HEIGHT REFERENCE SETTING⁹

0.75mm2

1.27+/-0.05 [.050+/- .002]

6.5

-

1

1

1

1

2119782-1

FINE ADJUST HEAD ASM, PACIFIC STYLE

251

-

-

-

1

-

2119640-1

PUSH ROD, AIR FEED

250

-

-

-

1

-

2079988-1

BUSHING, LCH5-12, MISUMI

249

-77

-27

-25

-22

-21

PART NO

DESCRIPTION

ITEM NO

PACIFIC VERSION

Shown on sheets 3 of 4 & 4 of 4

(Atlantic version shown on sheets 1 of 4 & 2 of 4)

SET UP GAUGE

2119599-1

LOC

A

DIST

66

REVISIONS

P	LTR	DESCRIPTION	DATE	OWN	APVD
-	-	SEE SHEET 1	-	-	-
-	-	-	-	-	-
-	-	-	-	-	-

-

1

1

1

1

1-22279-3

SPRING, COMPRESSION

246

-

1

1

1

1

2119082-9

CAM, SNAIL, INSULATION ADJUSTMENT

244

-

1

1

1

1

2079764-1

WASHER, WAVE SPRING, CREST-TO-CREST

243

-

1

1

1

1

2119083-1

RETAINER, INSULATION DIAL

242

-

1

1

1

1

7-18023-7

SCR, SKT HD CAP M3 X 4.0

241

-

-

2

-

-

2168400-6

SHCS, LOW HEAD, RoHS, M5 X 16

240

-

-

-

-

1

2119580-1

MECHANICAL FEED ASSEMBLY

239

-

-

-

1

-

2063440-1

AIR FEED MODULE

238

-

-

1

-

-

2119740-2

TAG,IDENTIFICATION

213

-

-

1

-

-

1901094-3

SPACER, FEEDER

198

-

1

1

1

1

993111-1

PIN, SLOTTED SPRING 3.0 X 20.0

177

-</

LOC	DIST	REVISIONS			
		P	LTR	DESCRIPTION	DATE
A	66	-	-	SEE SHEET 1	-

D

C

B

A

D

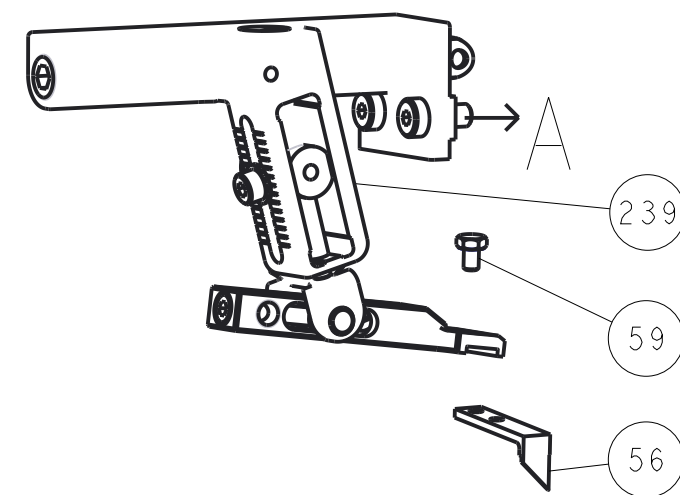
C

B

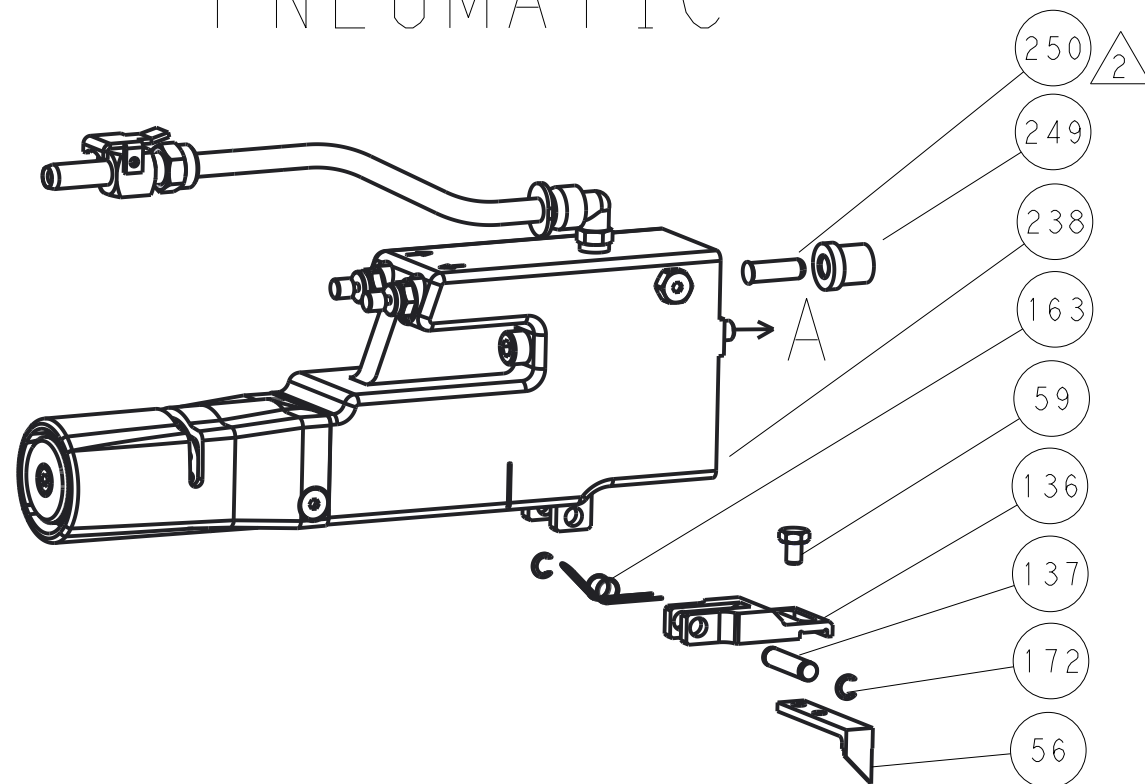
A

FEED TYPE

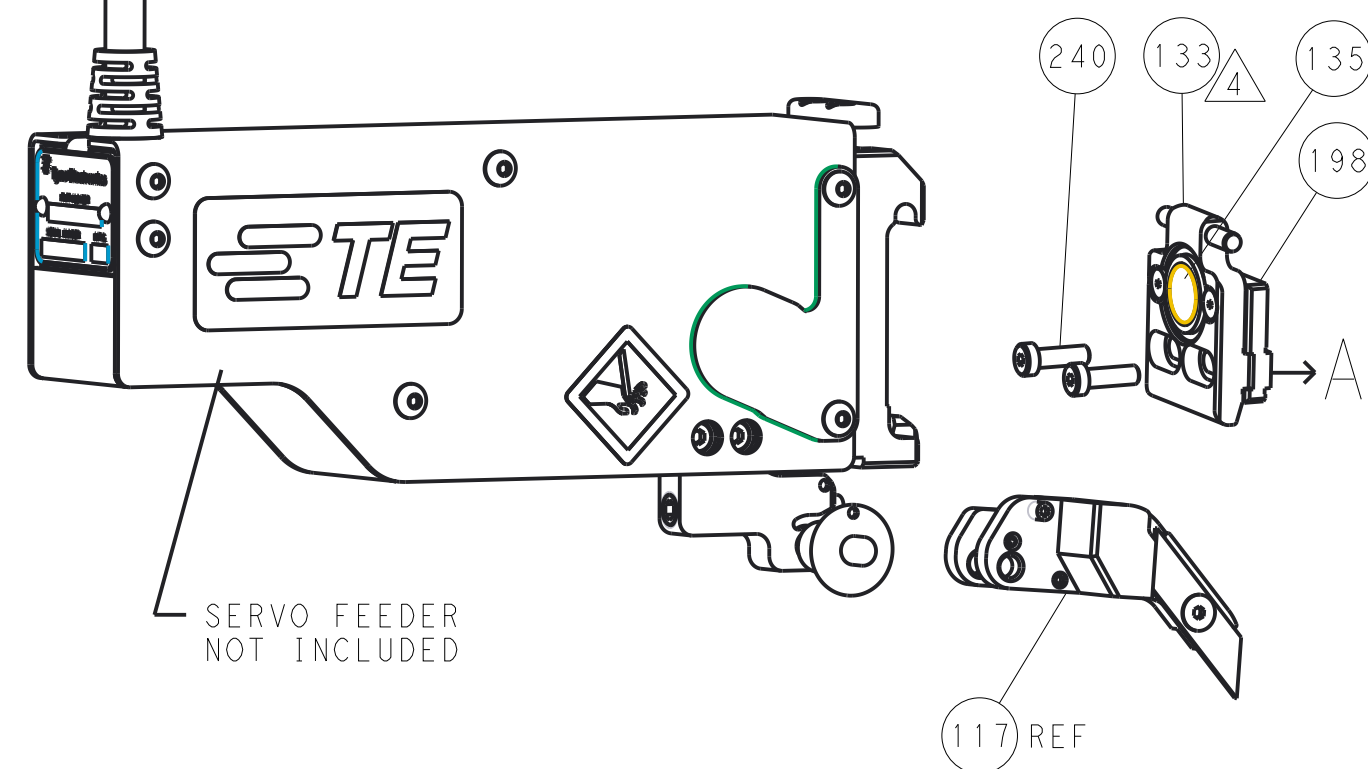
MECHANICAL



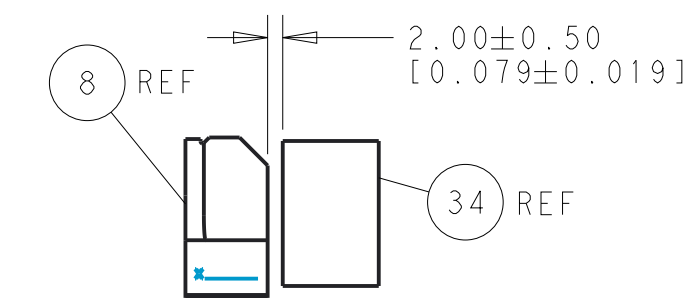
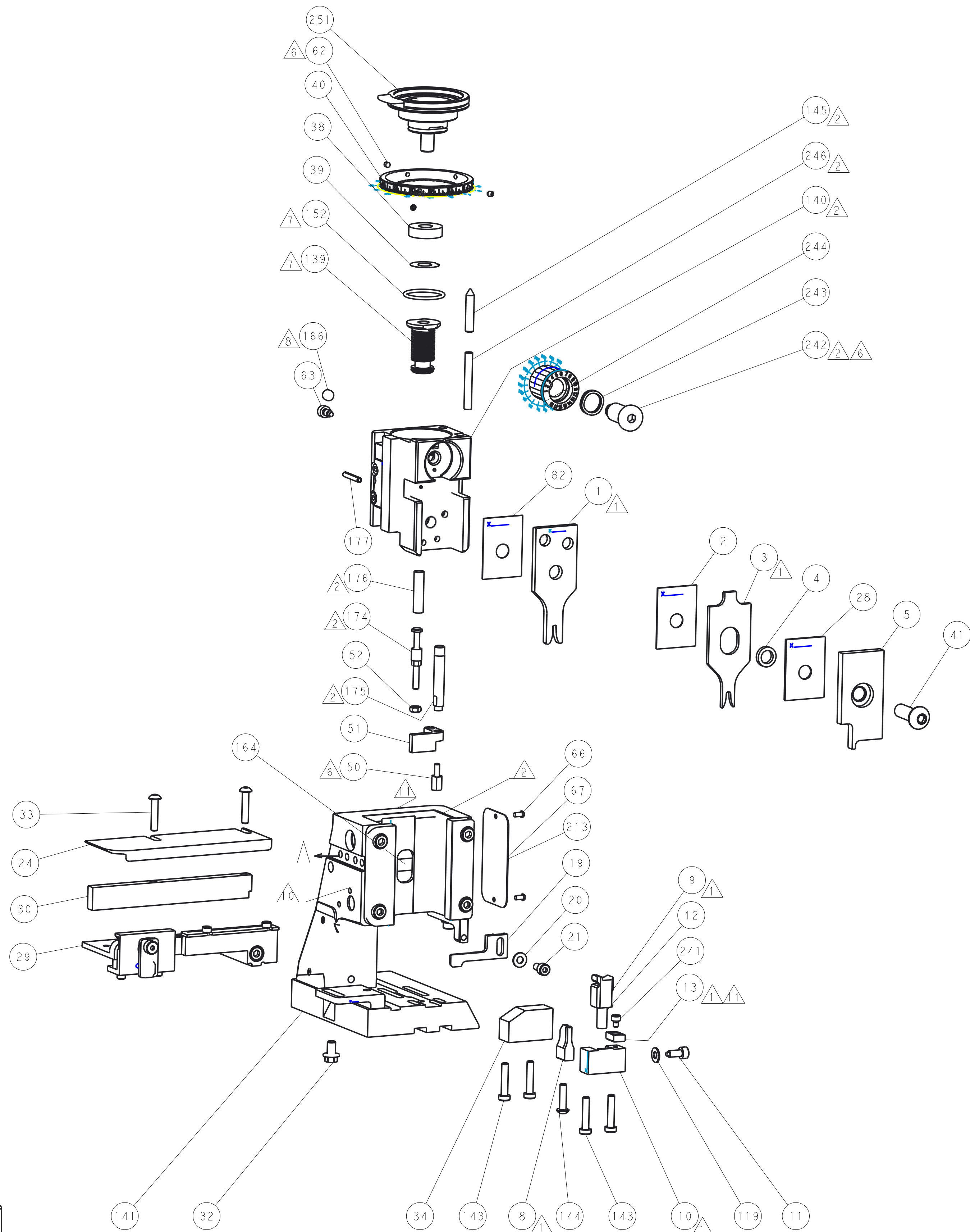
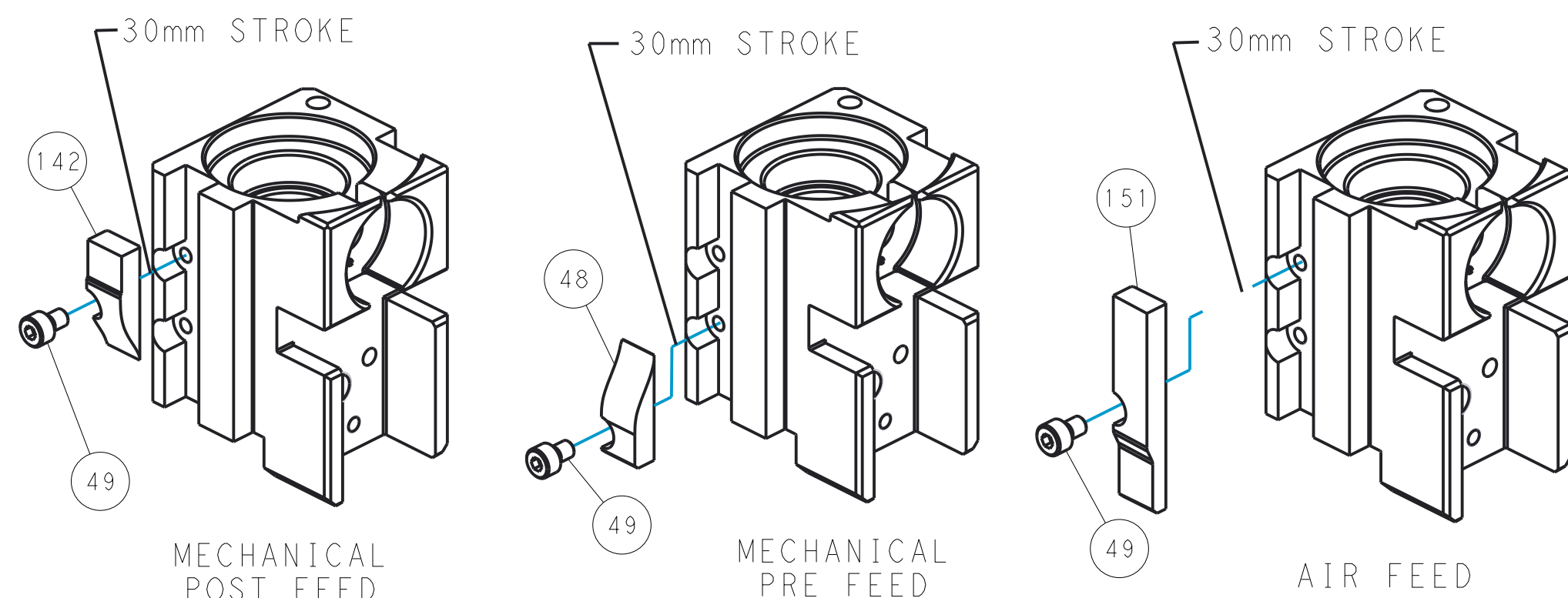
PNEUMATIC



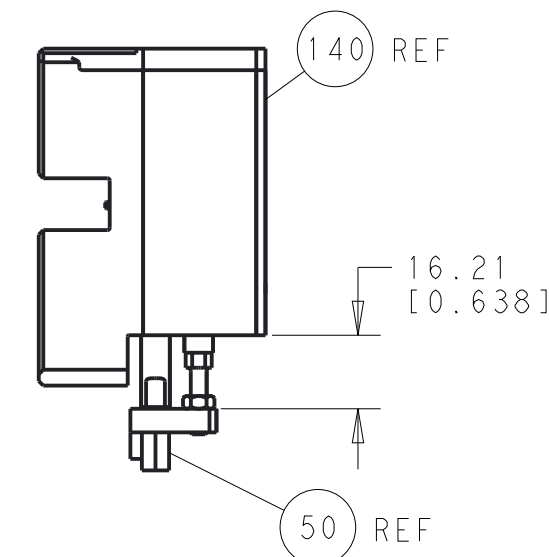
SERVO LATCH PLATE



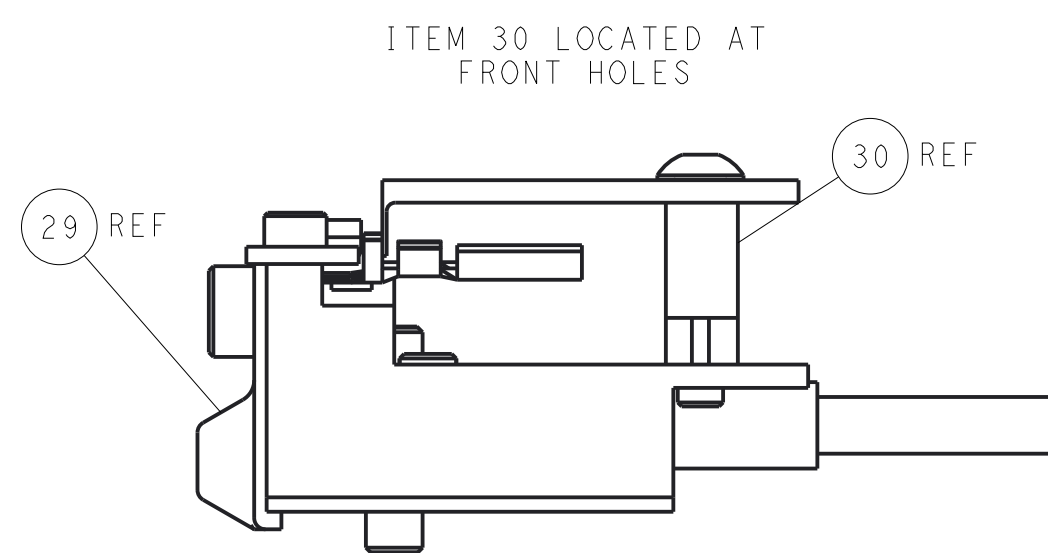
CAM POSITIONS



TERMINAL SUPPORT LOCATION



HOLDDOWN SET-UP



FEED TRACK POSITION
GUIDE BY INSULATION BARREL

PACIFIC VERSION
Shown on sheets 3 of 4 & 4 of 4
(Atlantic version shown on sheets 1 of 4 & 2 of 4)

DIMENSIONS: mm		TOLERANCES UNLESS OTHERWISE SPECIFIED:		DWN Y. YIN 21NOV2011		CHK G. BAILEY 21NOV2011		APVD S. XI 21NOV2011		NAME Ocean Side Feed Applicator	
0 PLC ±.5		1 PLC ±0.13		2 PLC ±0.13		3 PLC ±0.013		4 PLC ±0.0001		RESTRICTED TO	
MATERIAL		FINISH		WEIGHT		SIZE A1		CAGE CODE 00779		DRAWING NO C=2151376	
Customer Accessible Production Drawing		SCALE 1:2		SHEET 4		OF 4		REV C2			

SHEETS 1 & 2 ARE NOT REQUIRED FOR PACIFIC VERSION