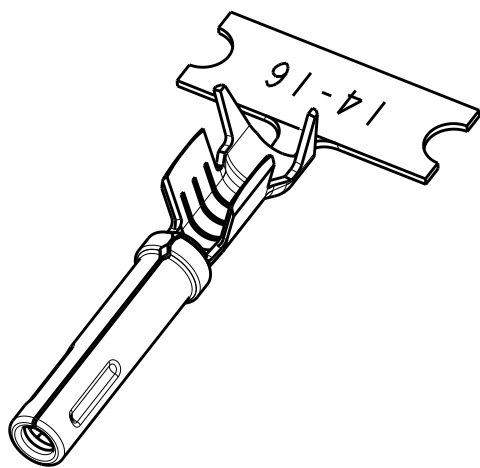
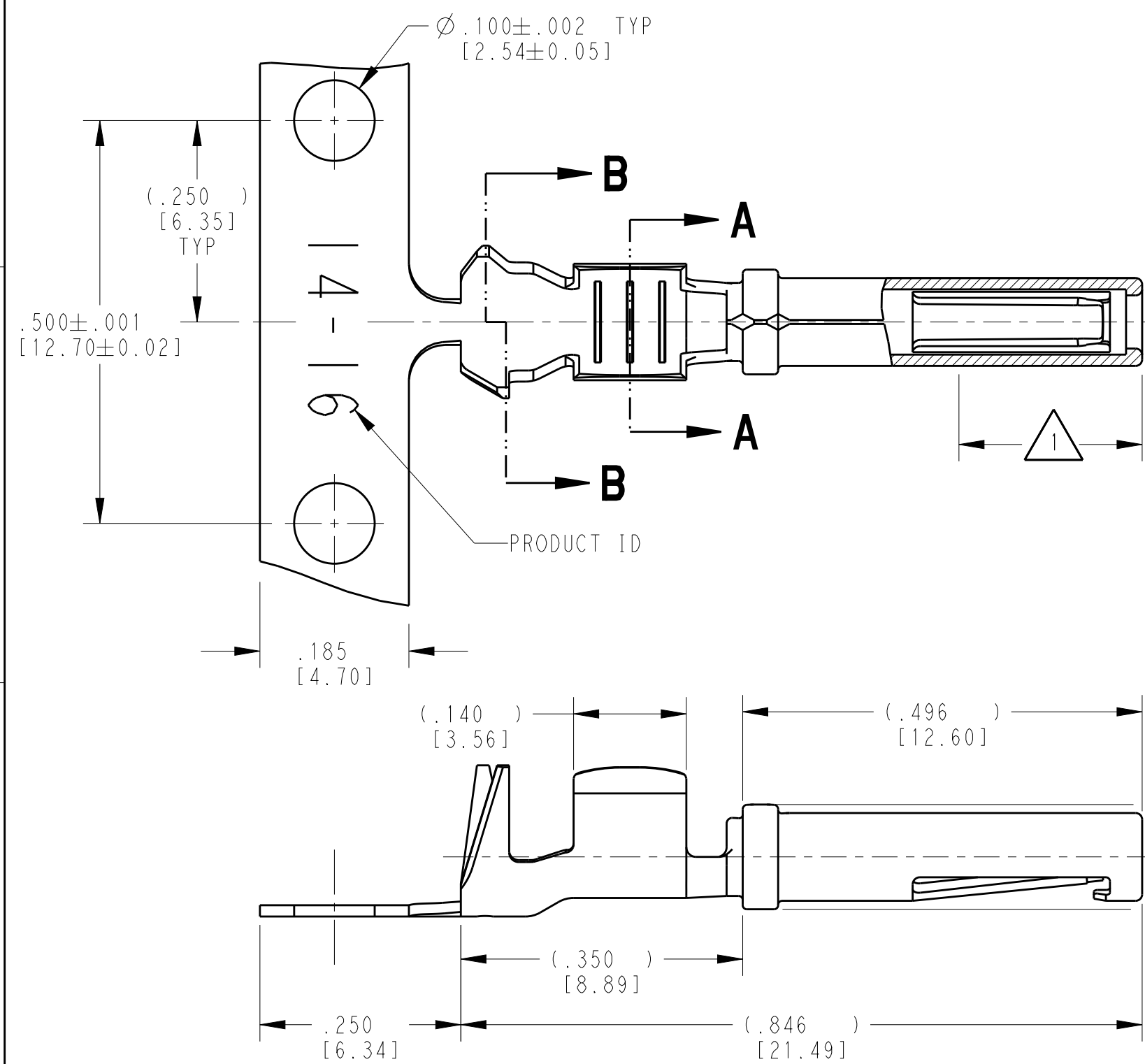


2

1

LOC	DIST	REVISIONS					
		P	LTR	DESCRIPTION	DATE	DWN	APVD
			NC	NEW RELEASE PER E.O. PI8906	07AUG2005	VT	RDR
			A	REVISED PER E.O PI9555	07NOV2007	JA	RDR
			B	REVISED PER E.O P20396	25JUN2010	JA	RDR
			C	REVISED PER ECO-15-007761	28MAY2015	RL	DM



SECTION A-A
WIRE BARREL

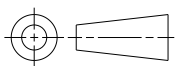
SECTION B-B
INSULATION BARREL

- 3 MATERIAL: .014 [0.36] THICK CU ALLOY
2. WIRE RANGE: 16 AWG TO 12 AWG [1.0-2.5 mm²]
INSULATION RANGE: Ø.075-.140 [Ø1.91-3.56]
- 1 APPLIES ONLY TO SELECTIVE GOLD 1062-16-1444.
INDICATED DIMENSION SHOWS GOLD PLATED AREA.

NOTES: UNLESS OTHERWISE SPECIFIED

THIS DRAWING IS A CONTROLLED DOCUMENT.

DIMENSIONS:
INCHES[mm]



TOLERANCES UNLESS
OTHERWISE SPECIFIED:

0 PLC	±
1 PLC	±
2 PLC	±
3 PLC	±.025 [0.64]
4 PLC	±
ANGLES	±

MATERIAL



FINISH

SEE TABLE

DWN 16MAY2005

DAVID MEYER

CHK 26JUN2005

DAVID MEYER

APVD 29JAN2005

VLADIMIR TOMSA

PRODUCT SPEC

0425-015-0000

APPLICATION SPEC

0425-039-0000

WEIGHT

0.52 g

Customer Drawing

TE INTERNAL PN	DEUTSCH PN	PLATING
1062-16-1422	1062-16-1422	NICKEL
1062-16-1444	1062-16-1444	SELECTIVE GOLD
1062-16-1477	1062-16-1477	TIN



TE Connectivity

NAME
SOCKET, STAMPED AND FORMED
SIZE 16
12-16AWG

SIZE	CAGE CODE	DRAWING NO	RESTRICTED TO
A3	4AFU8	1062-16-14XX	-

SCALE 6:1

SHEET 1 OF 1

REV C