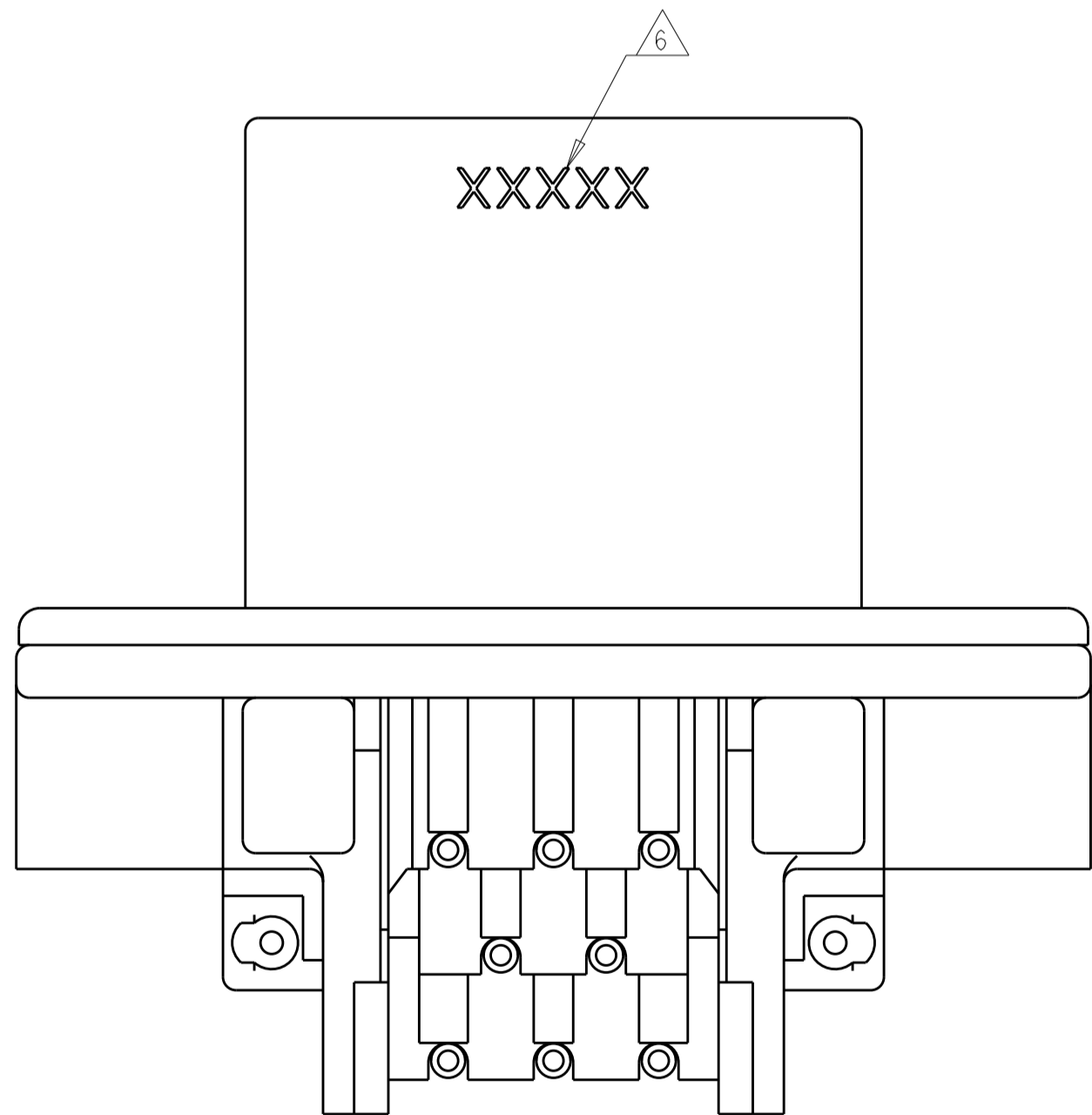


SECTION B-B



REVISIONS					
P.	LTR.	DESCRIPTION	DATE	DWN.	APVD.
F4		REVISED PER ECO-12-009257	29MAY2012	DLD	DCS
F5		REVISED PER ECO-13-020268	31DEC2013	DLD	DCS
F6		REVISED PER ECO-14-019367	20JAN2015	DD	DS
F7		REVISED PER ECO-15-003872	25MAR2015	DD	DS

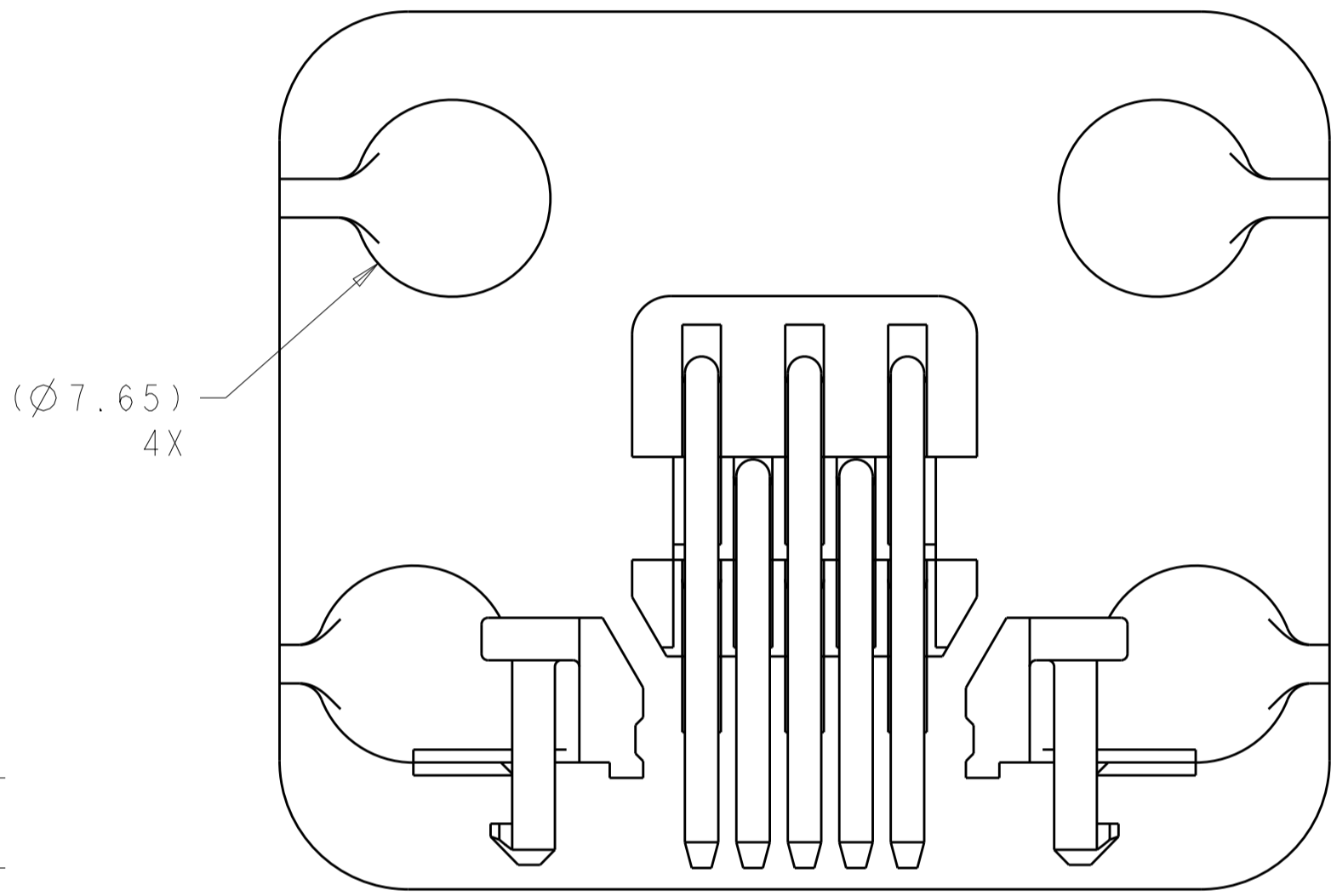
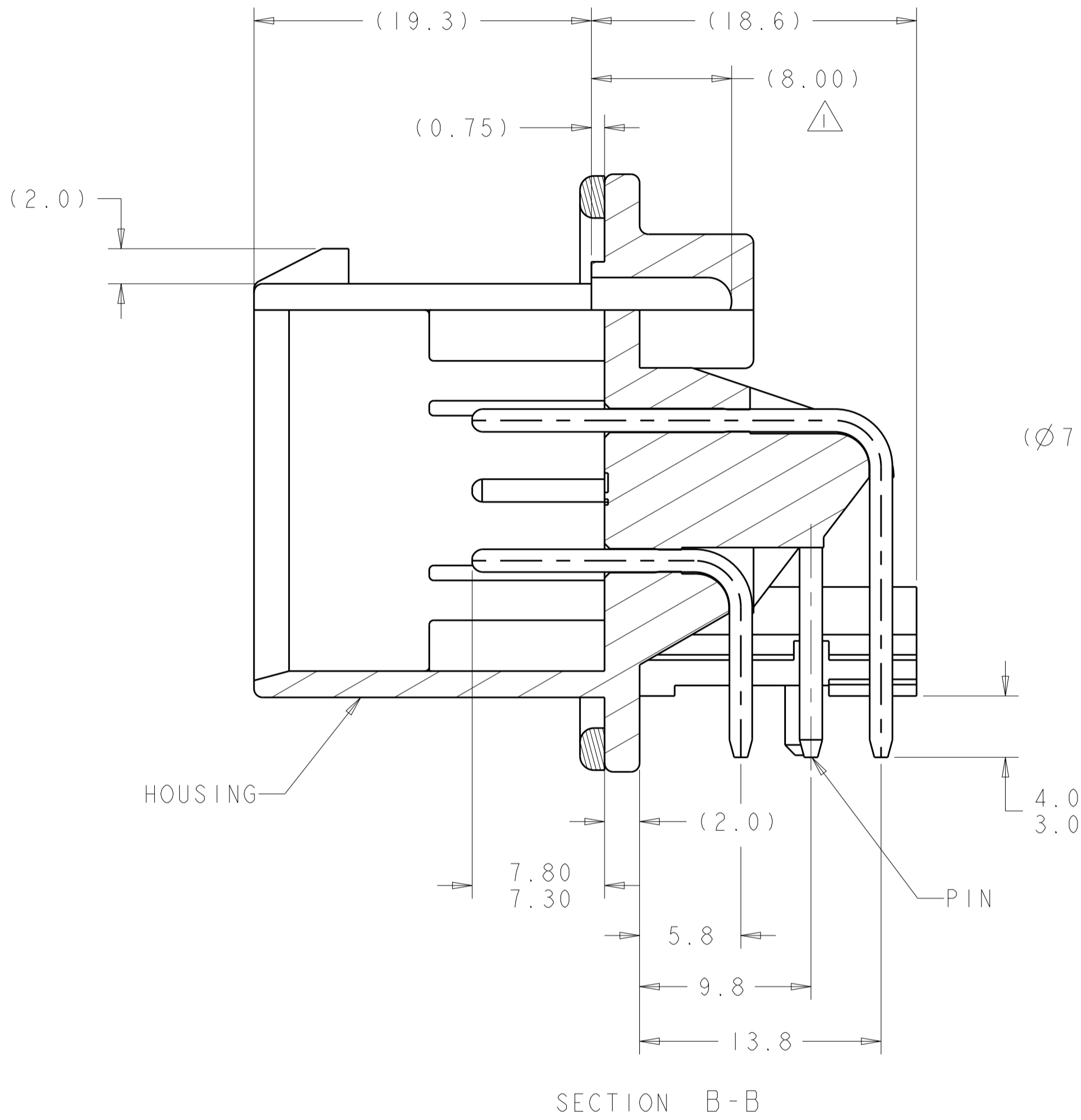
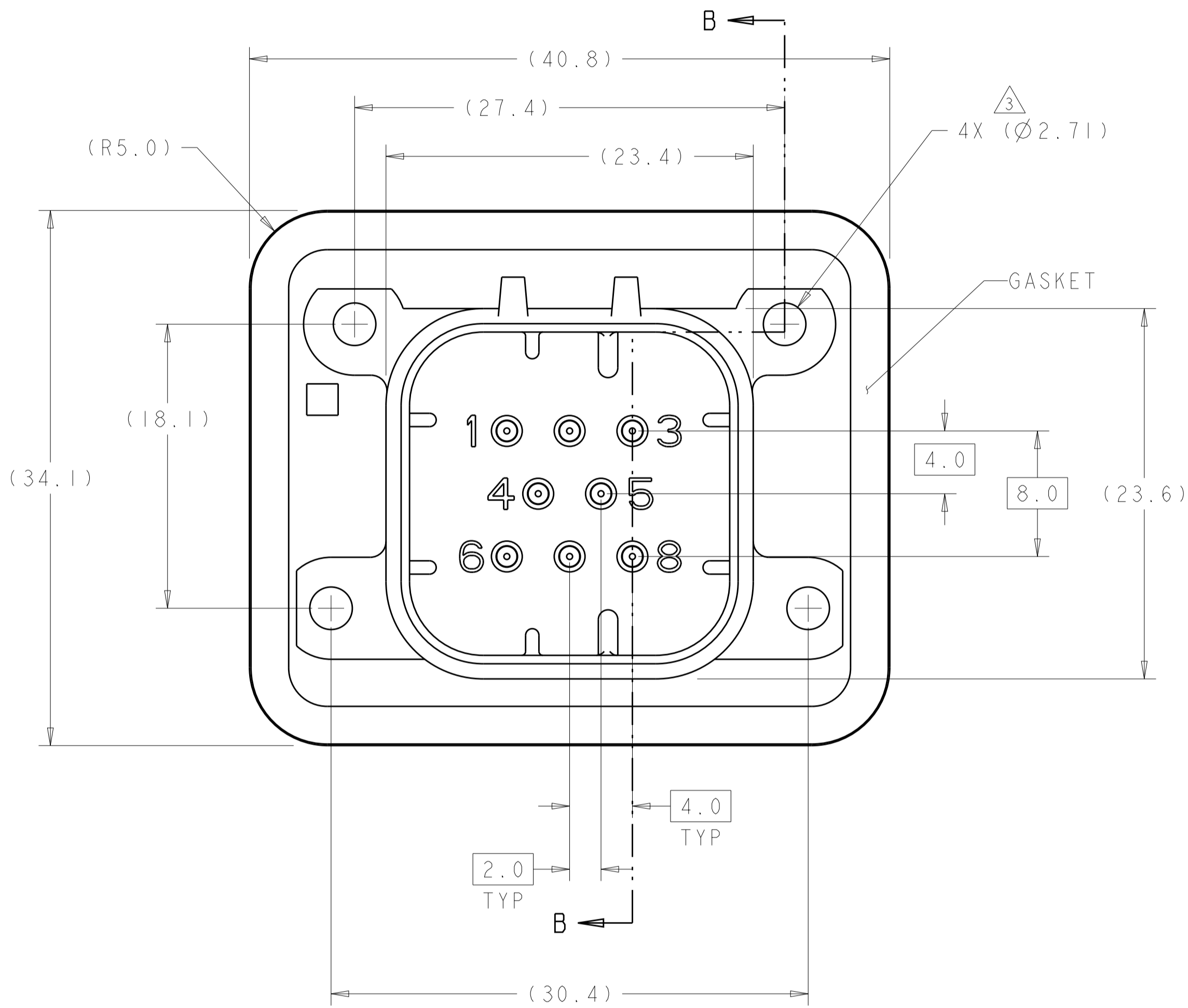
- △ ACCEPTS #4 SELF TAPPING THREAD FORMING SCREWS OR METRIC EQUIVALENT. DRIVE TO 0.6-0.8 N-m.
- △ HOUSING COLORS ARE MECHANICALLY KEYED TO MATE ONLY WITH IDENTICALLY COLORED PLUG ASSEMBLIES.
- △ REFER TO PAGE 2 FOR 776280-6 ASSEMBLY DIMENSIONS, RECOMMENDED MOUNTING HOLE AND P.C. BOARD LAYOUT ARE THE SAME FOR ALL DASH NUMBERS.
4. HEADER MATES TO PLUG ASSEMBLY 776286 WHICH USES REELED TERMINALS 770520 AND LOOSE PIECE TERMINALS 770854.
- △ MATERIALS: GASKET - SILICONE
HEADER HOUSING - GLASS FILLED PBT
PINS - TIN OR GOLD PLATED BRASS
- △ DATE CODE TO BE BRANDED IN THIS LOCATION PER TE SPEC 102-60. USE 5 DIGIT CODE: FIRST 2 DIGITS = YEAR, SECOND 2 DIGITS = WEEK, LAST DIGIT = DAY

NATURAL	DURAGOLD PLATED	1-776280-2
BLACK	DURAGOLD PLATED	1-776280-1
BLACK	TIN PLATED	△ 776280-6
NATURAL	TIN PLATED	776280-2
BLACK	TIN PLATED	776280-1
△ HEADER HOUSING COLOR	PIN	PART NUMBER

THIS DRAWING IS A CONTROLLED DOCUMENT.		DWN J. MARKEY 29FEB08	TE Connectivity	
		CHK J. MARKEY 29FEB08		
		APVD J. MARKEY 29FEB08	NAME	
DIMENSIONS:		PRODUCT SPEC	HEADER ASSEMBLY, 8 POSITION, RIGHT ANGLE, AMPSEAL	
mm		108-1329		
		APPLICATION SPEC	SIZE CAGE CODE DRAWING NO	
		114-16016	A100779C=776280	
MATERIAL		WEIGHT	RESTRICTED TO	
△ 5		-	-	
		CUSTOMER DRAWING	SCALE 4:1 SHEET 1 OF 3 REV F7	

REVISIONS					
P.	LTR.	DESCRIPTION	DATE	DWN.	APVD.
-	-	SEE SHEET 1	-	-	-

- ⚠ ACCEPTS #4-20 SELF TAPPING THREAD FORMING TWIN HELIX PLASTITE SCREW (SINGLE HELIX OPTIMAL)
- ⚠ HOUSING COLORS ARE MECHANICALLY KEYED TO MATE ONLY WITH IDENTICALLY COLORED PLUG ASSEMBLIES.
- ⚠ 0° 30' MAX DRAFT FROM TOP OF HOLE (1° INCLUDED ANGLE)

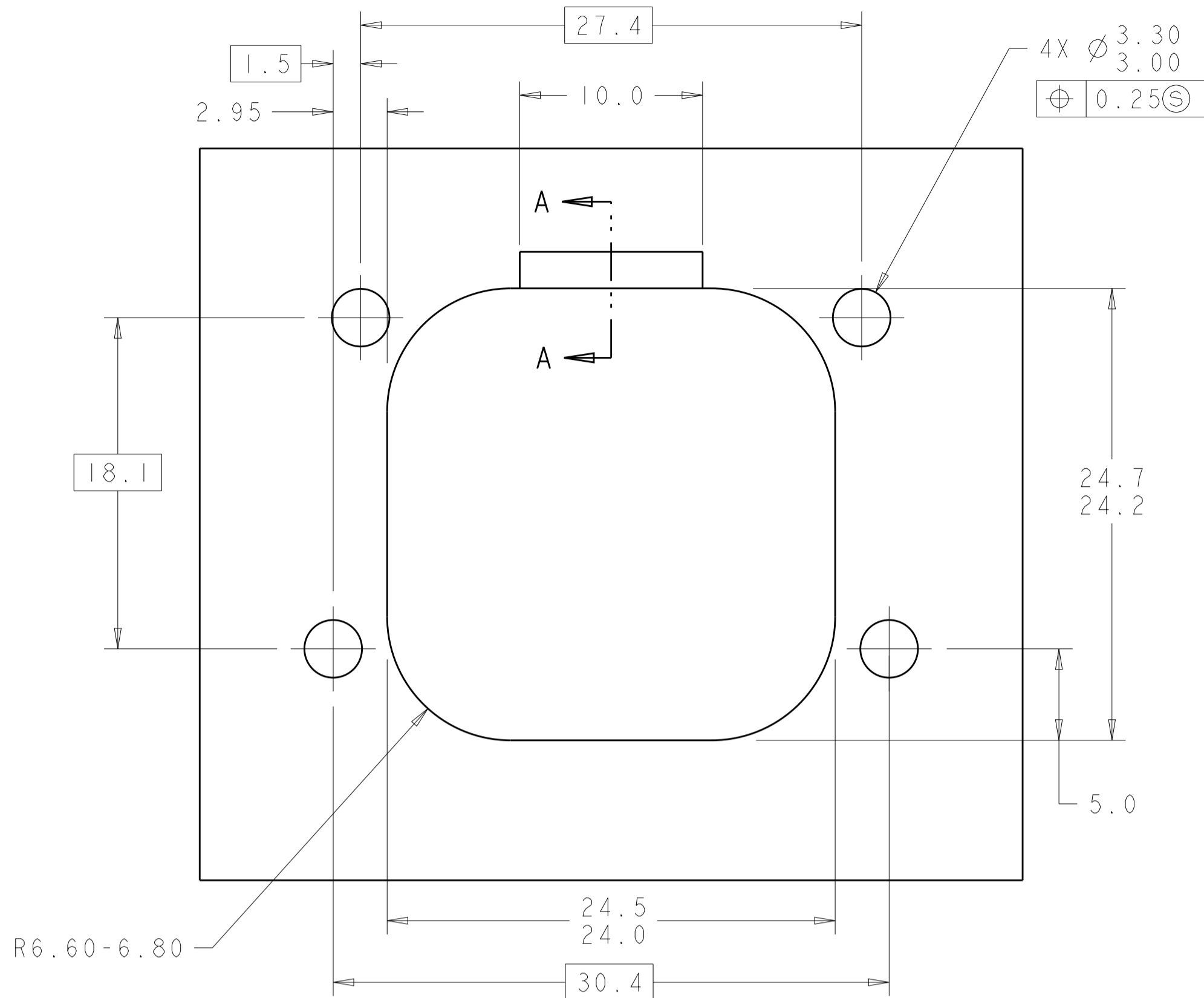


ASSEMBLY DIMENSIONS APPLY TO 776280-6 ONLY
(HOLE LAYOUT AND P.C. BOARD LAYOUT SHOWN ON SHEET 1 APPLY TO ALL DASH NUMBERS)

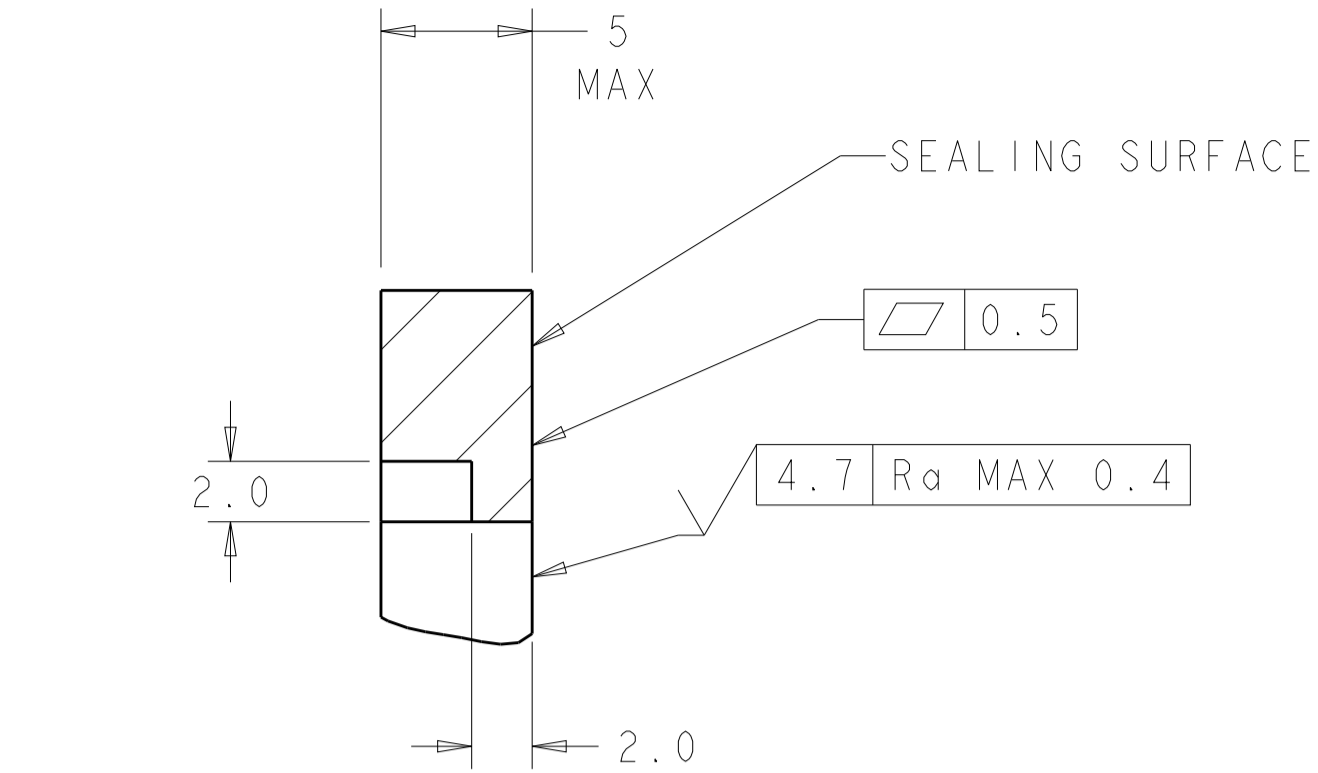
BLACK	TIN PLATED	776280-6
HEADER HOUSING COLOR	PIN	PART NUMBER

THIS DRAWING IS A CONTROLLED DOCUMENT.		DWN. J. MARKEY 29FEB08	TE Connectivity	
DIMENSIONS:		CHK. J. MARKEY 29FEB08		
mm	TOLERANCES UNLESS OTHERWISE SPECIFIED:	APVD. J. MARKEY 29FEB08	NAME	
0 PLC ±0.2	1 PLC ±0.13	PRODUCT SPEC	HEADER ASSEMBLY, 8 POSITION, RIGHT ANGLE, AMPSEAL	
2 PLC ±0.13	3 PLC ±0.13	APPLICATION SPEC		
4 PLC ±0.13	ANGLES ±4°	114-16016	SIZE	RESTRICTED TO
MATERIAL	FINISH	WEIGHT	A100779C=776280	-
-	-	CUSTOMER DRAWING	SCALE 2:1	SHEET 2 OF 3 REV F7

REVISIONS					
P	LTR	DESCRIPTION	DATE	DWN	APVD
-	-	SEE SHEET 1	-	-	-

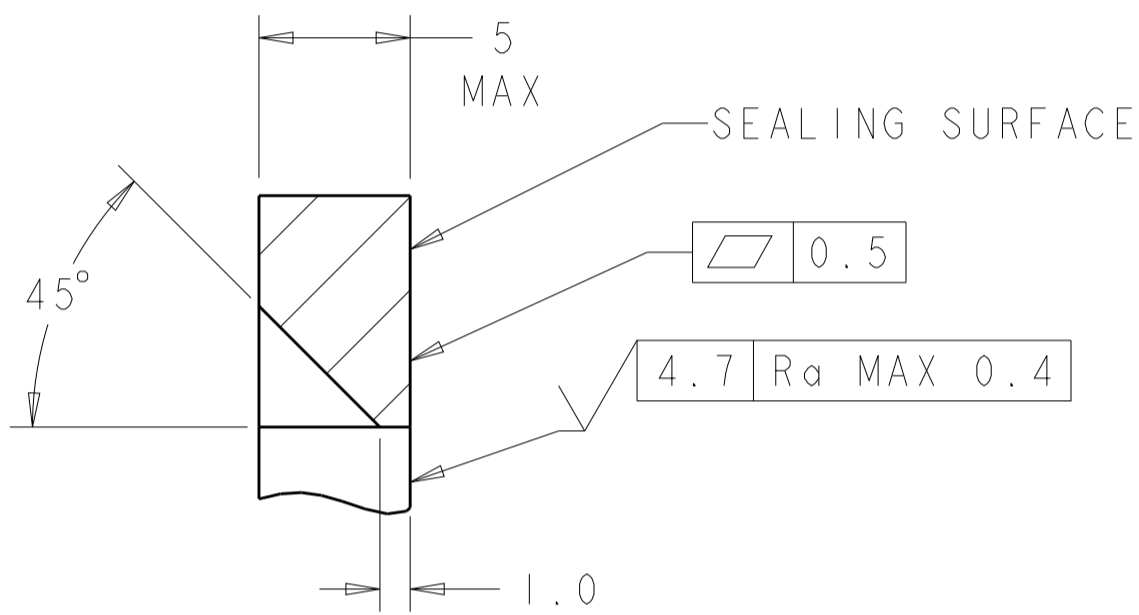


RECOMMENDED MOUNTING HOLE LAYOUT
FOR 5.0 MAX THICK PANEL



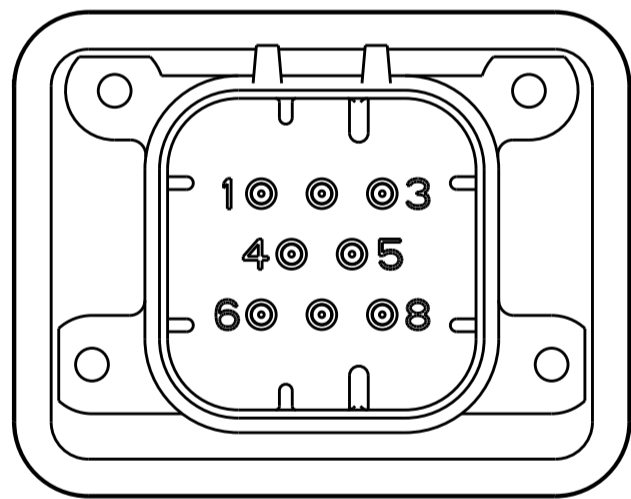
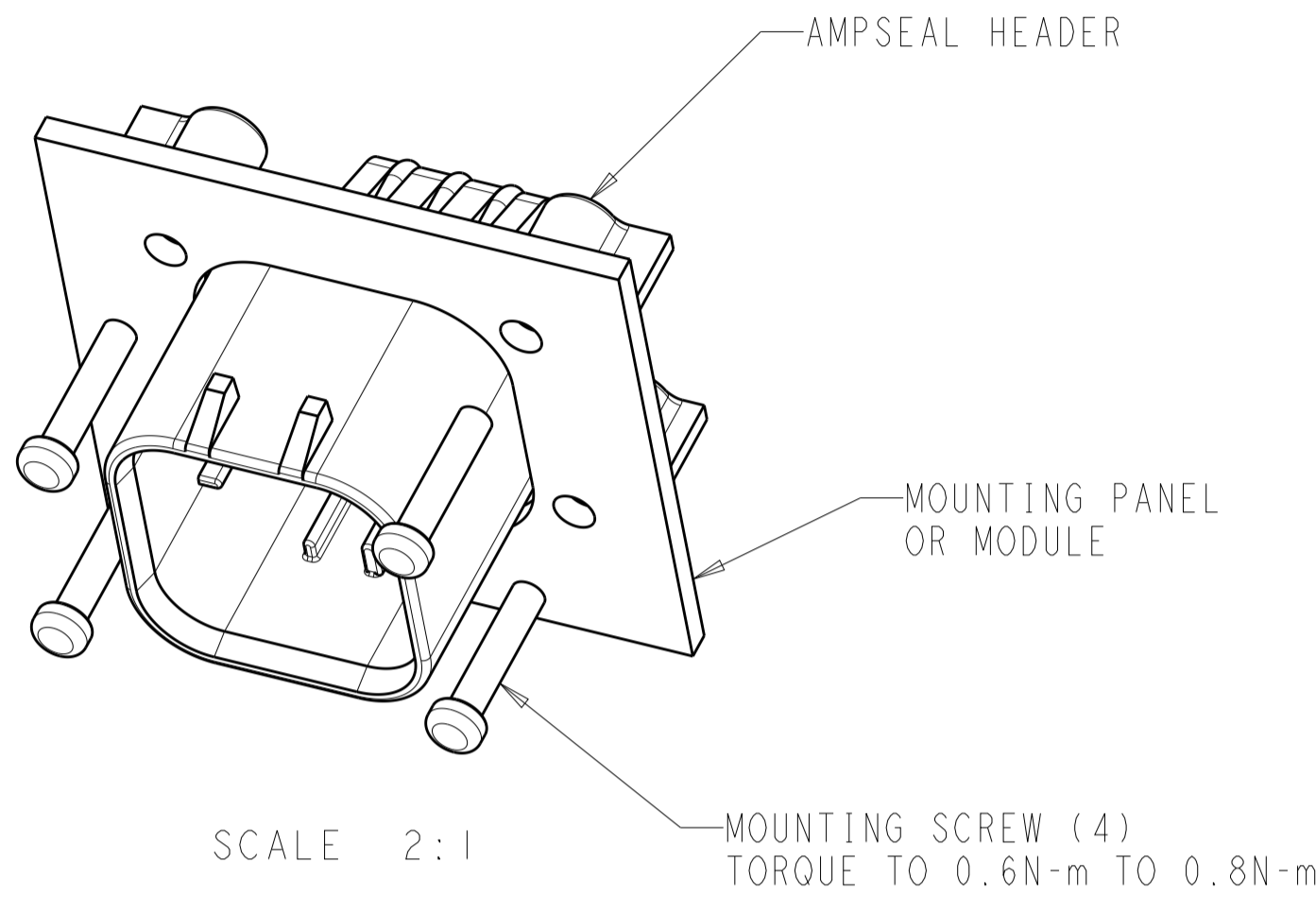
SECTION A - A
OPTIONAL CONSTRUCTION IF PANEL
THICKNESS IS GREATER THEN 2.0

SCALE 4:1



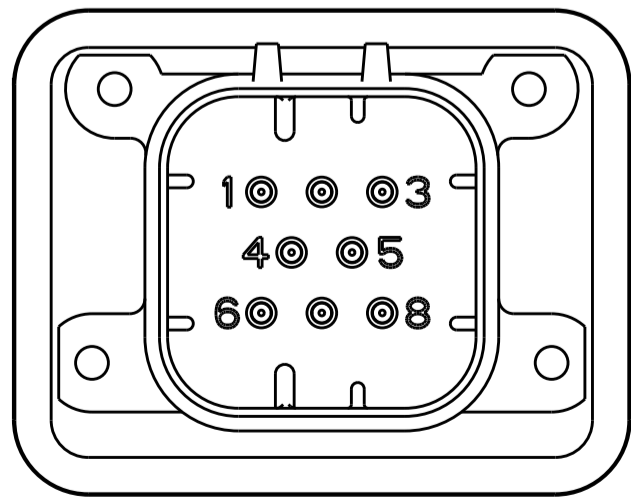
SECTION A - A
OPTIONAL CONSTRUCTION IF PANEL
THICKNESS IS GREATER THEN 2.0

SCALE 4:1



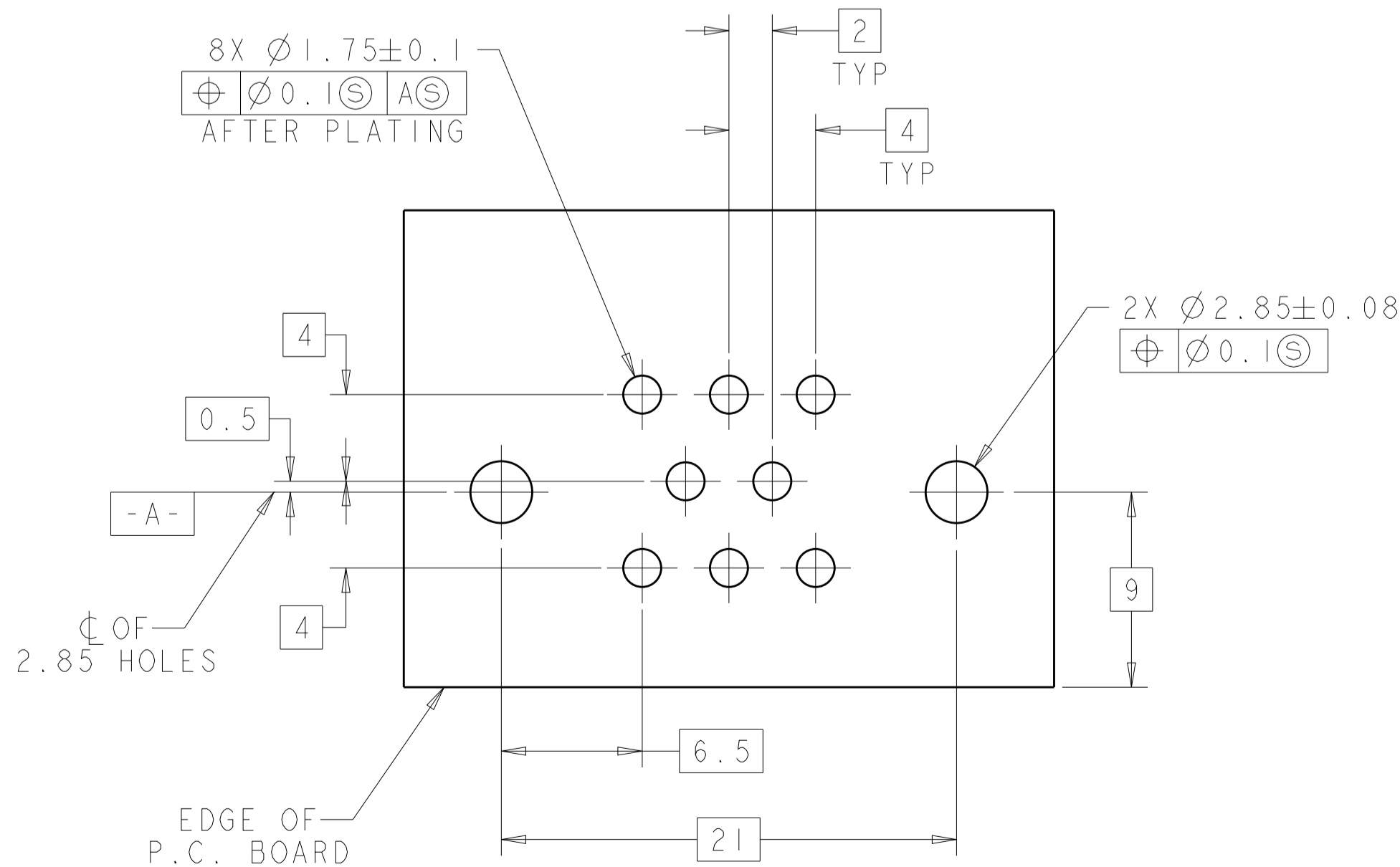
776280-1, 776280-6 & 1-776280-1
KEY LOCATION

SCALE 2:1

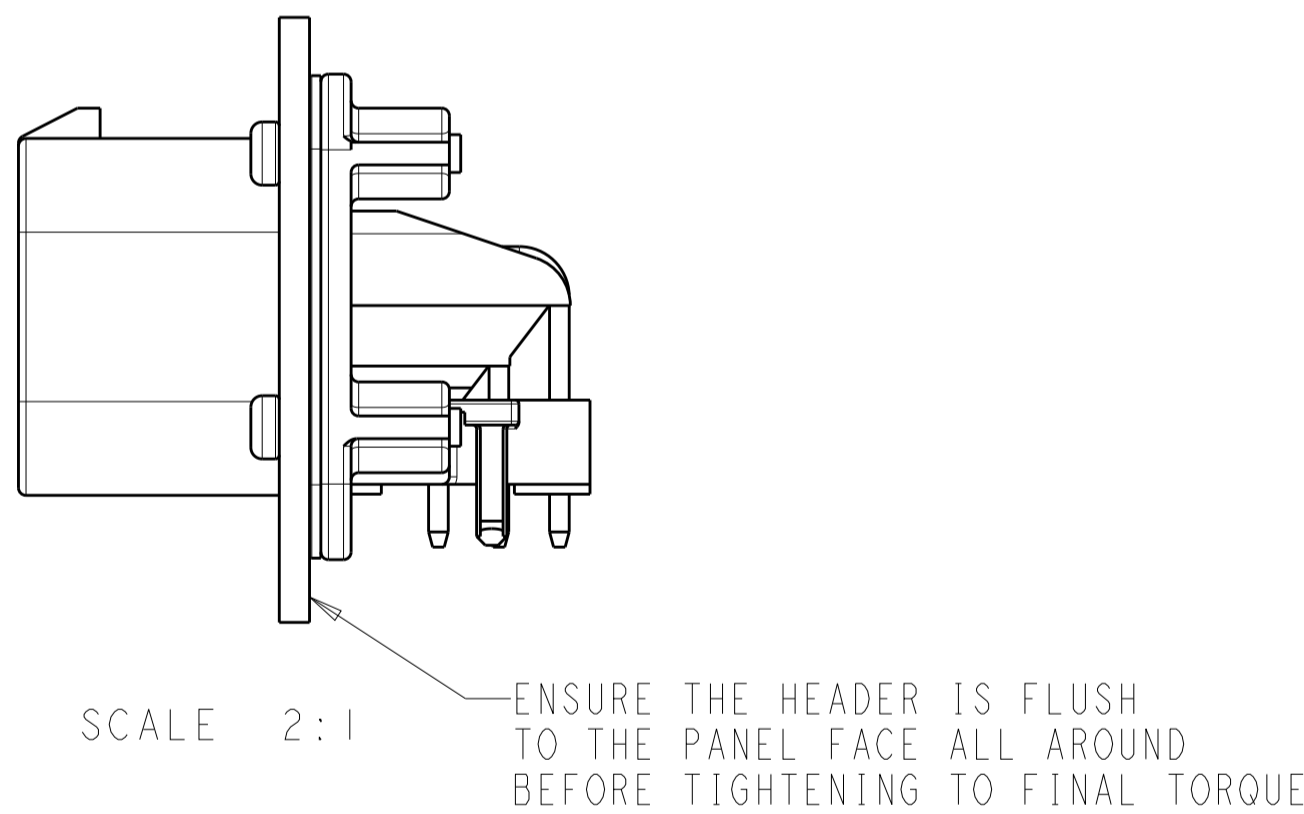


776280-2 & 1-776280-2
KEY LOCATION

SCALE 2:1



RECOMMENDED P.C. BOARD LAYOUT
FOR 1.57 THICK P.C. BOARD



THIS DRAWING IS A CONTROLLED DOCUMENT.		DWN J. MARKEY 29FEB08	TE Connectivity	
DIMENSIONS:		CHK J. MARKEY 29FEB08		
mm	TOLERANCES UNLESS OTHERWISE SPECIFIED:	APVD J. MARKEY 29FEB08	NAME	
	0 PLC ±.2	PRODUCT SPEC	HEADER ASSEMBLY, 8 POSITION, RIGHT ANGLE, AMPSEAL	
	1 PLC ±0.13	108-1329		
	2 PLC ±.	APPLICATION SPEC		
	3 PLC ±.	114-16016		
MATERIAL	FINISH	WEIGHT	SIZE A1	CAGE CODE 00779
CUSTOMER DRAWING		DRAWING NO C=776280	RESTRICTED TO	
SCALE 4:1		SHEET 3 OF 3	REV F7	