

REVISIONS					
P.	LTR.	DESCRIPTION	DATE	DWN.	APVD.
J4		REVISED PER ECO-12-009257	29MAY2012	DD	DS
J5		REVISED PER ECO-13-019430	10DEC2013	DD	DS
J6		REVISED PER ECO-15-000177	30JAN2015	DD	DS
J7		REVISED PER ECO-15-003872	25MAR2015	DD	DS

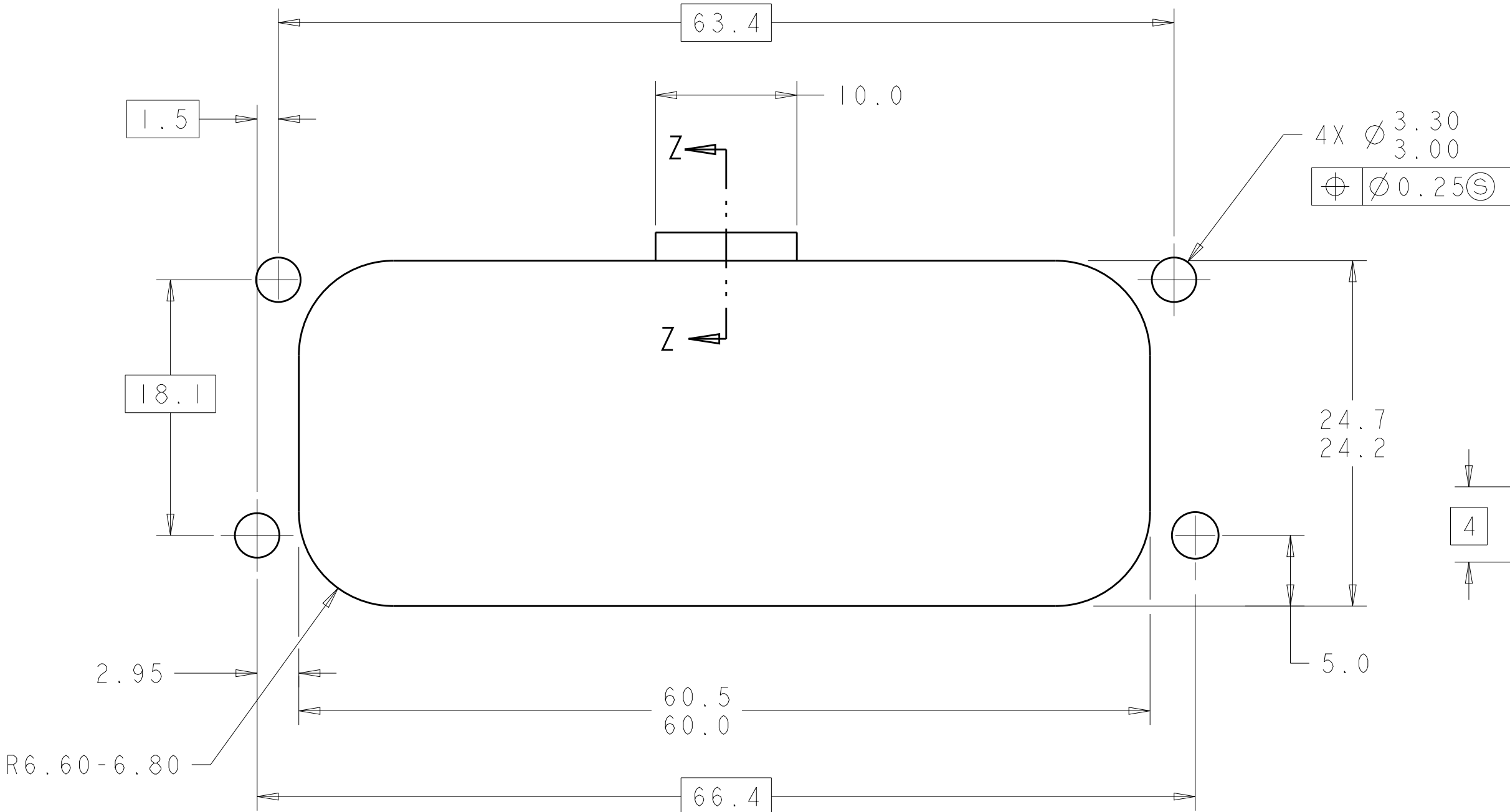
- 1 ACCEPTS #4 SELF TAPPING THREAD FORMING SCREW OR METRIC EQUIVALENT TO BE DRIVEN AT 0.6-0.8 N-m
- 2 DATE CODE IN THIS LOCATION USING 5 DIGIT CODE
FIRST 2 DIGITS = YEAR, SECOND 2 DIGITS = WEEK
LAST DIGIT = DAY
- 3 HOUSING COLORS ARE MECHANICALLY KEYED TO MATE ONLY WITH IDENTICALLY COLORED PLUG ASSEMBLIES.
- 4 MATERIAL: HEADER HOUSING - GLASS FILLED PBT
PINS - TIN OR GOLD PLATED BRASS
GASKET - SILICONE
5. HEADER MATES TO PLUG ASSEMBLY 776164 WHICH USES REELED TERMINAL 770520 OR LOOSE PIECE TERMINAL 770854

776163-1 & 1-776163-1
KEY LOCATION AS SHOWN

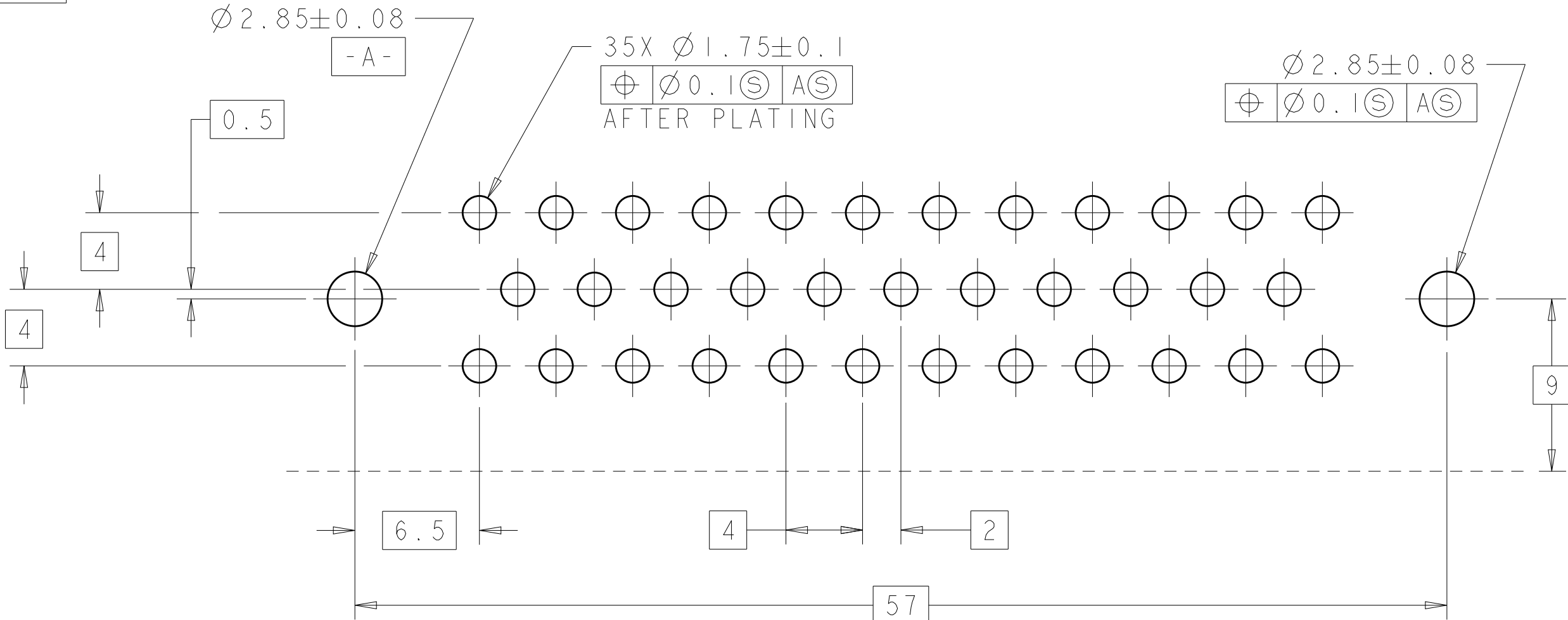
DURAGOLD	ORANGE	1-776163-6
DURAGOLD	BLUE	1-776163-5
DURAGOLD	GRAY	1-776163-4
DURAGOLD	NATURAL (WHITE)	1-776163-2
DURAGOLD	BLACK	1-776163-1
TIN	BLUE	776163-5
TIN	GRAY	776163-4
TIN	NATURAL (WHITE)	776163-2
TIN	BLACK	776163-1
FINISH	HEADER COLOR	PART NUMBER

THIS DRAWING IS A CONTROLLED DOCUMENT.		DWN R. VESTAL 31DEC2002	TE Connectivity	
DIMENSIONS:		CHK D. CROWE 31DEC2002		
mm		APVD D. CROWE 31DEC2002	NAME	
TOLERANCES UNLESS OTHERWISE SPECIFIED:		PRODUCT SPEC		
0 PLC ±0.2		108-1329	SIZE	
2 PLC ±		APPLICATION SPEC		
3 PLC ±		114-16016	CAGE CODE	
4 PLC ±		WEIGHT		
ANGLES		CUSTOMER DRAWING	DRAWING NO	
FINISH		SCALE 4:1		
MATERIAL		SHEET 1 OF 2	REV J7	

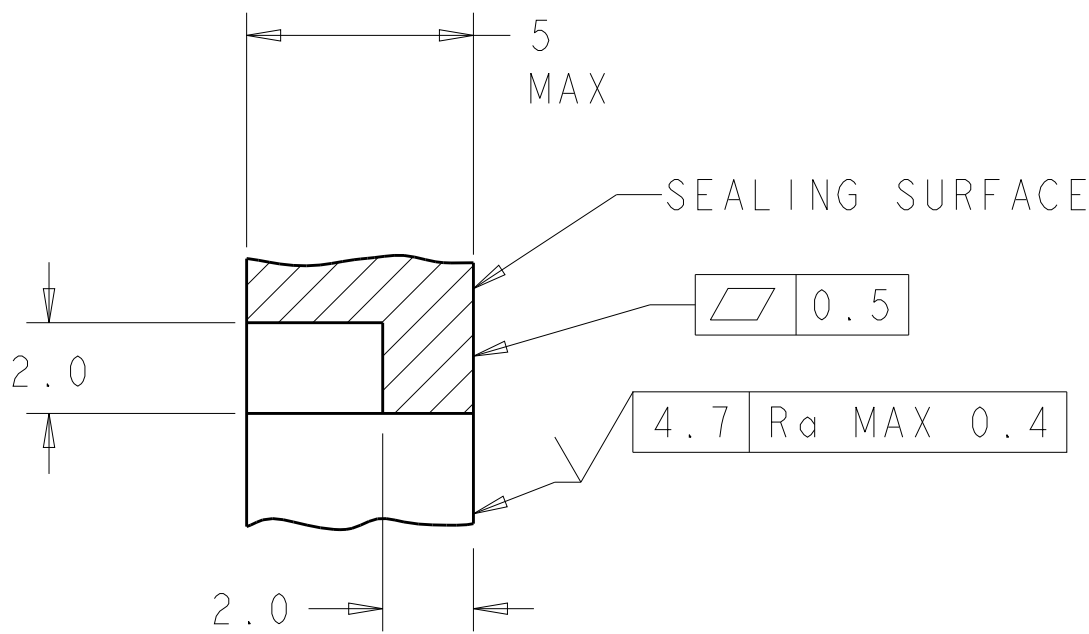
REVISIONS					
P.	LTR.	DESCRIPTION	DATE	DWN.	APVD.
-	-	SEE SHEET 1	-	-	-



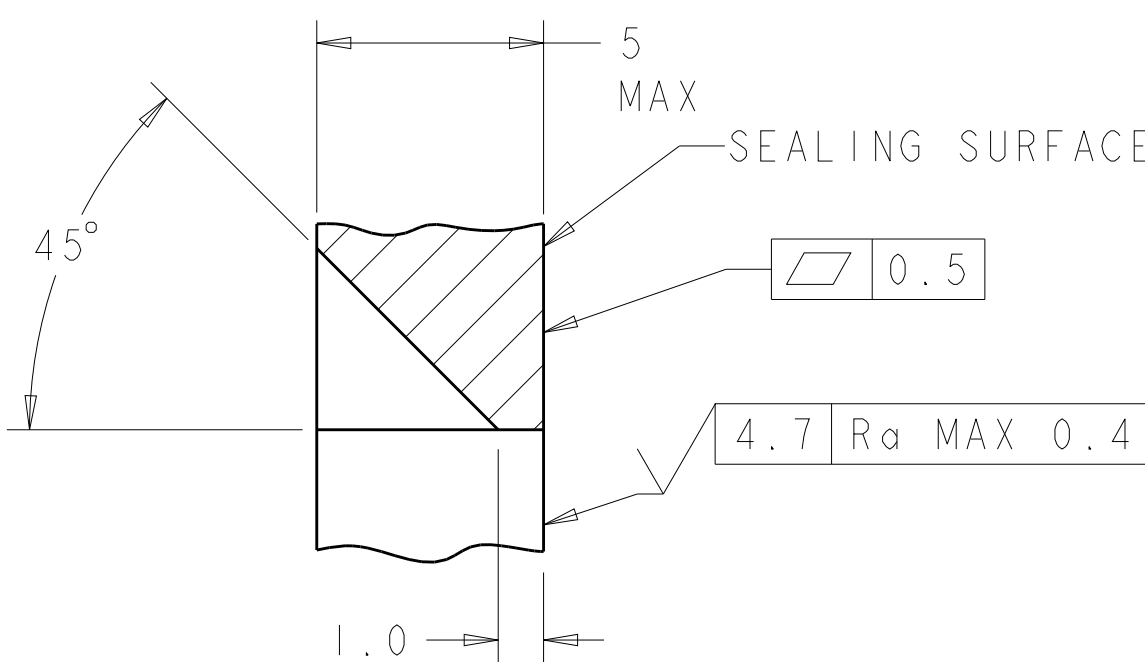
RECOMMENDED MOUNTING HOLE LAYOUT
FOR 5.0 MAX THICK PANEL



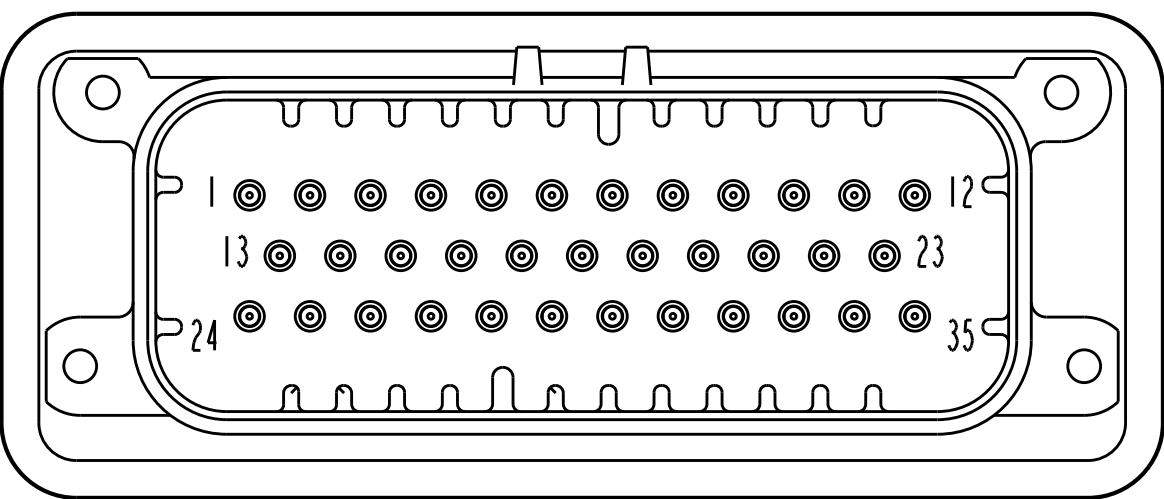
RECOMMENDED P.C. BOARD LAYOUT
FOR 1.57 THICK P.C. BOARD



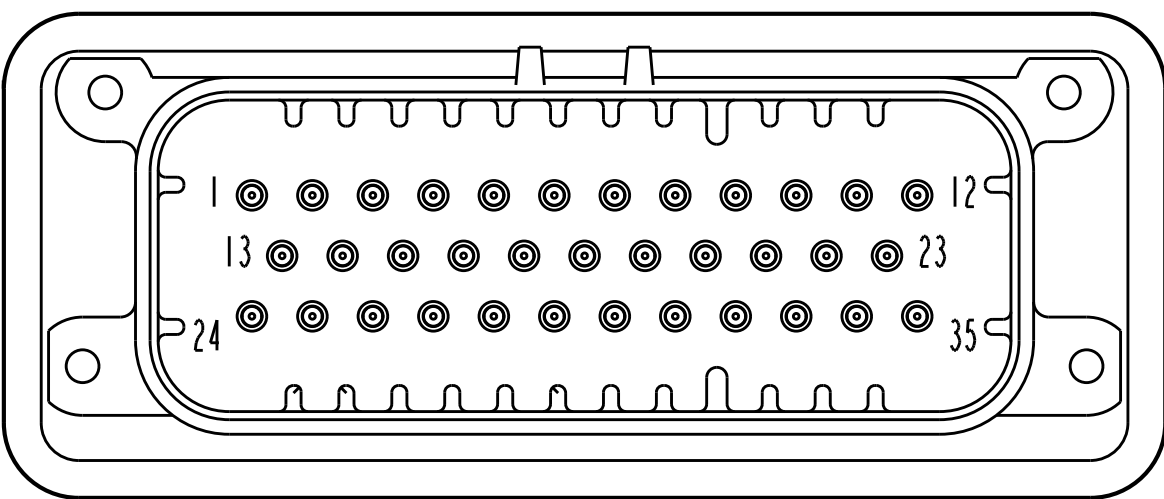
SECTION Z-Z
OPTIONAL CONSTRUCTION IF
THICKNESS IS GREATER THAN 2.0
SCALE 6:1



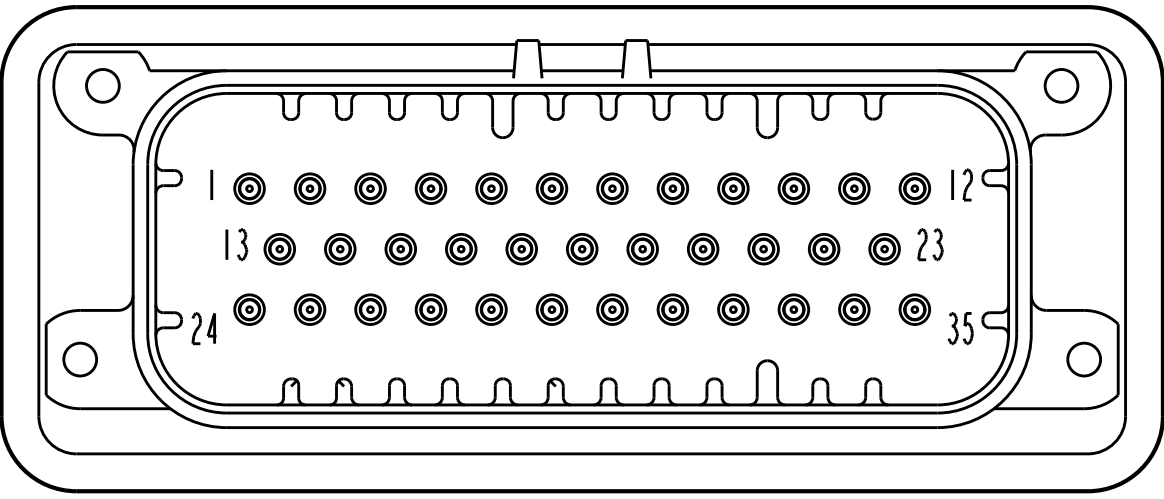
SECTION Z-Z
OPTIONAL CONSTRUCTION IF
THICKNESS IS GREATER THAN 2.0
SCALE 6:1



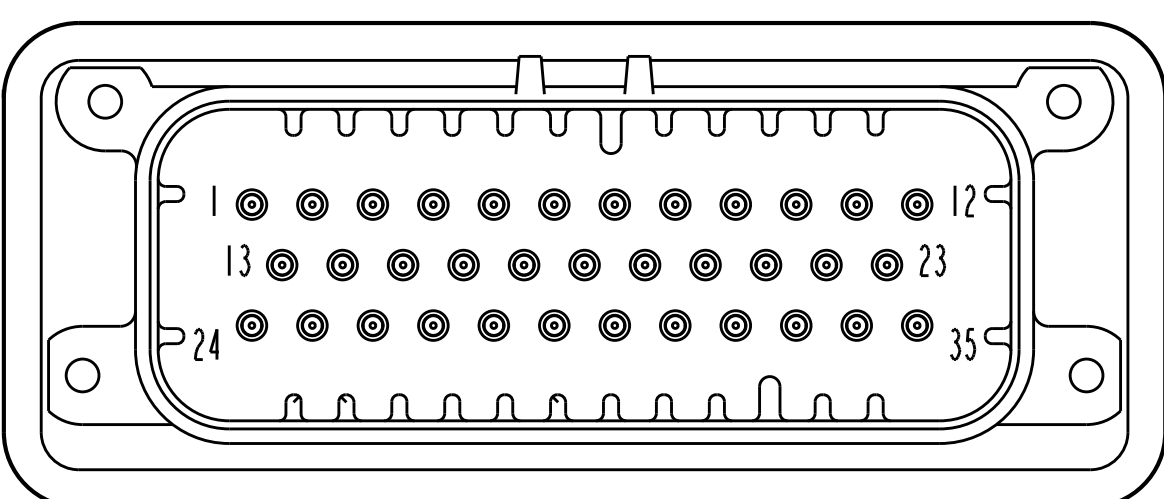
776163-2 & 1-776163-2
KEY LOCATION AS SHOWN
SCALE 2:1



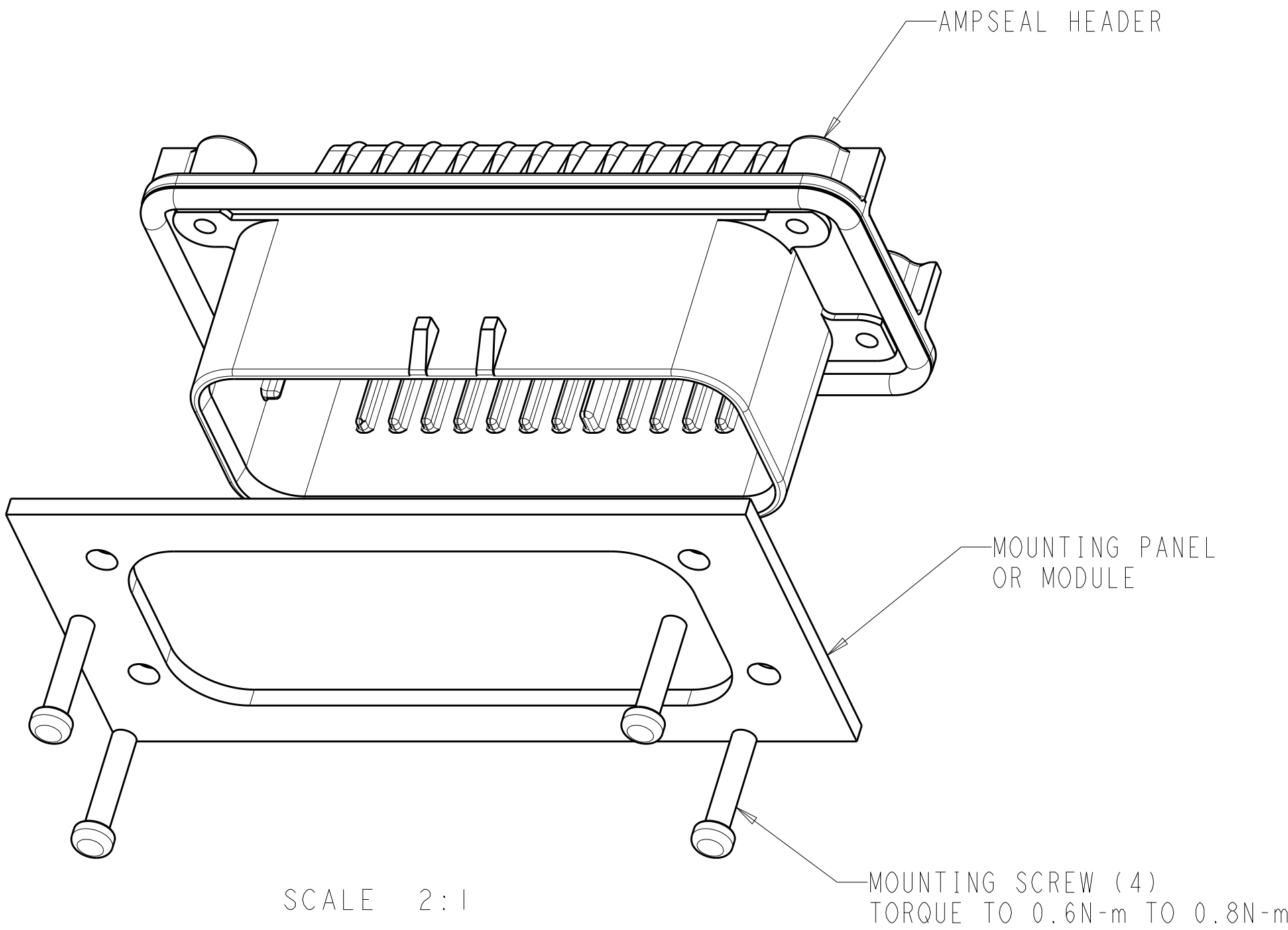
776163-4 & 1-776163-4
KEY LOCATION AS SHOWN
SCALE 2:1



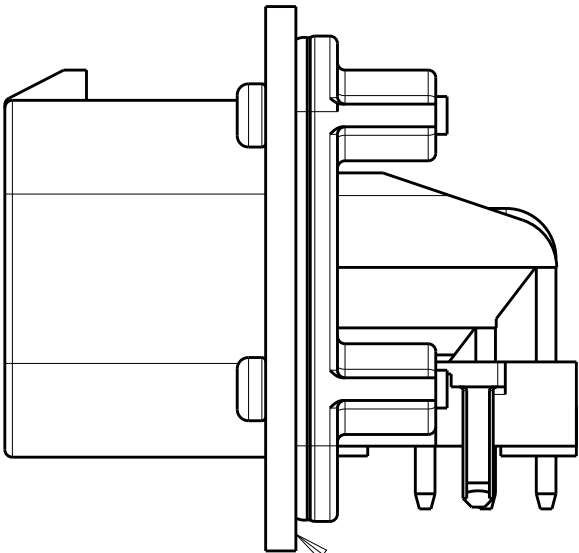
776163-5 & 1-776163-5
KEY LOCATION AS SHOWN
SCALE 2:1



1-776163-6
KEY LOCATION AS SHOWN
SCALE 2:1




SCALE 2:1



SCALE 2:1

ENSURE THE HEADER IS FLUSH
TO THE PANEL FACE ALL AROUND
BEFORE TIGHTENING TO FINAL TORQUE

THIS DRAWING IS A CONTROLLED DOCUMENT.		DWN R. VESTAL	31DEC2002	 TE Connectivity	
DIMENSIONS:		CHK D. CROWE	31DEC2002		
mm	TOLERANCES UNLESS OTHERWISE SPECIFIED:	APVD D. CROWE	31DEC2002	NAME	HEADER ASSEMBLY, 35 POSITION, RIGHT ANGLE, AMPSEAL