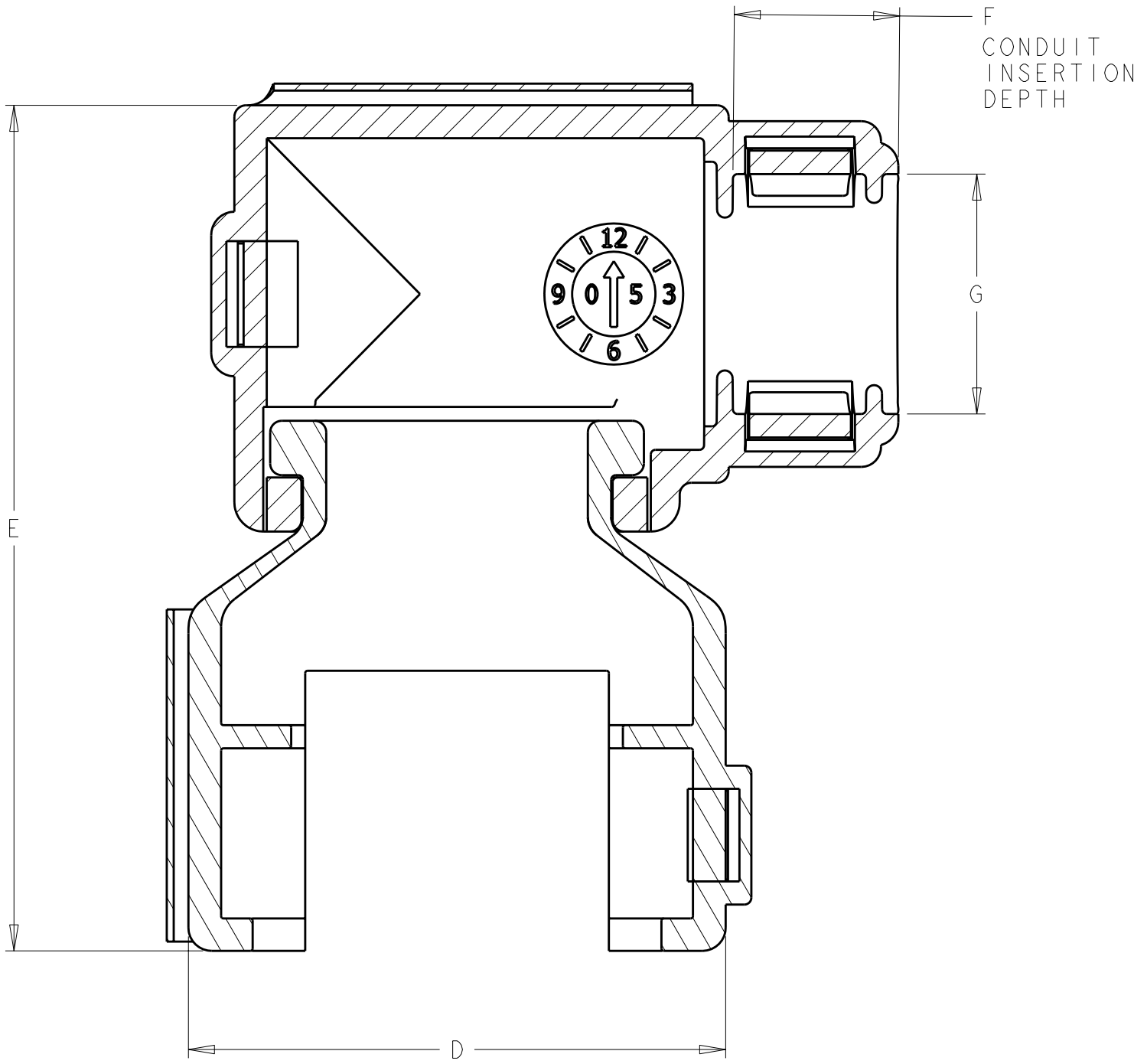
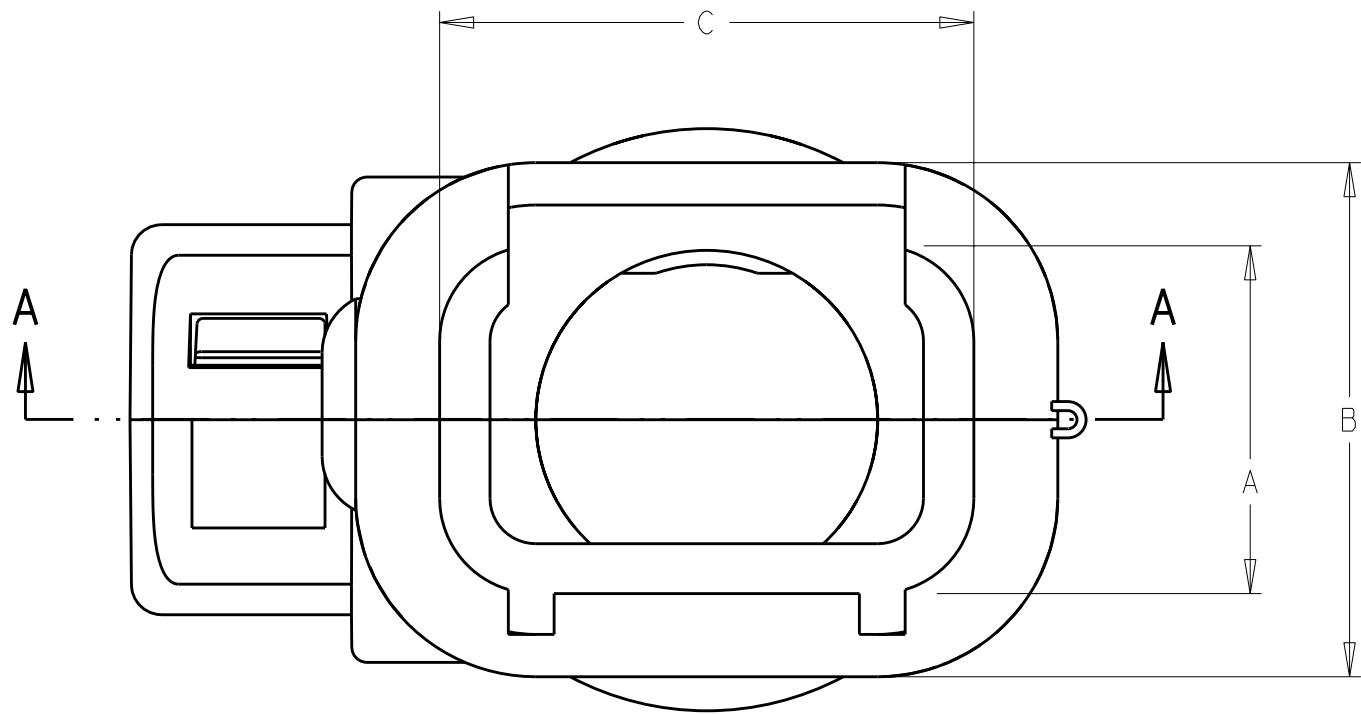
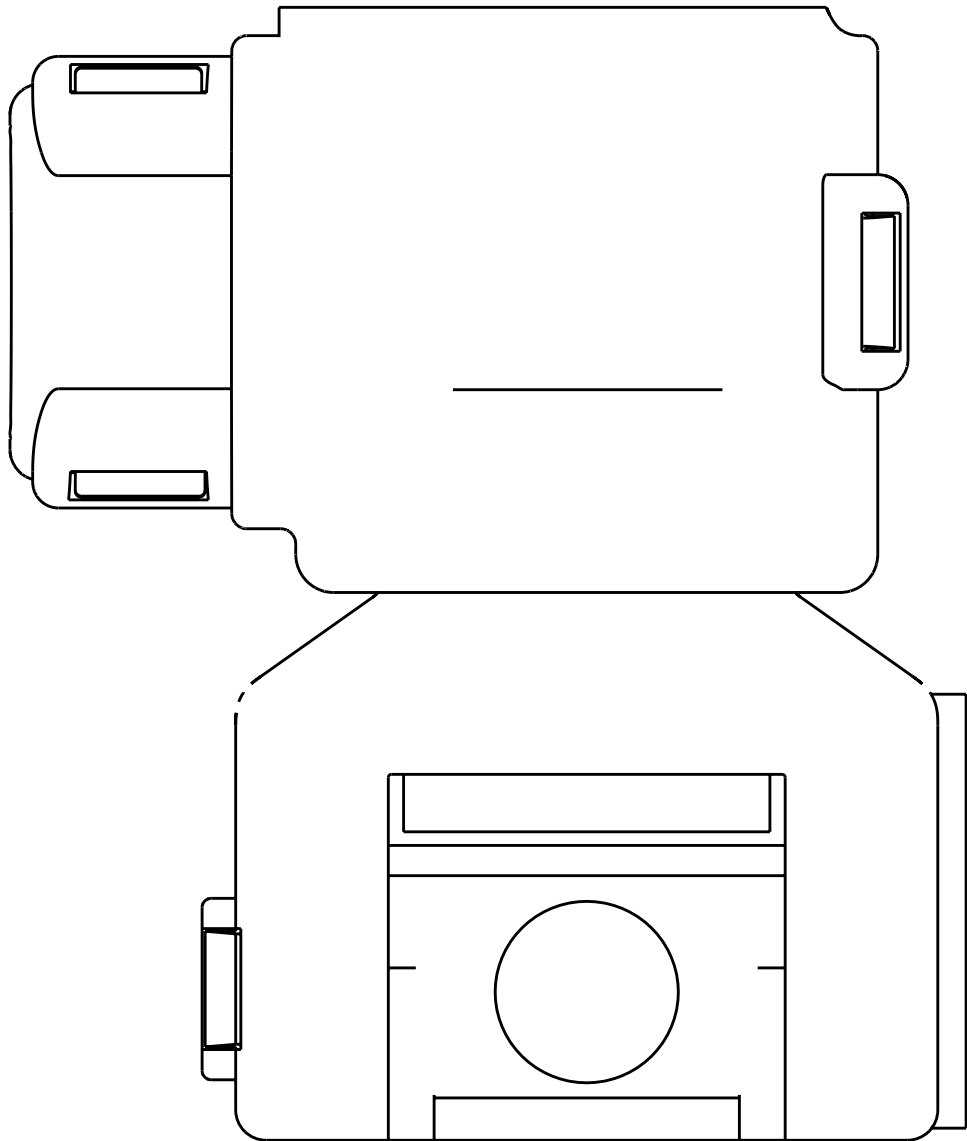
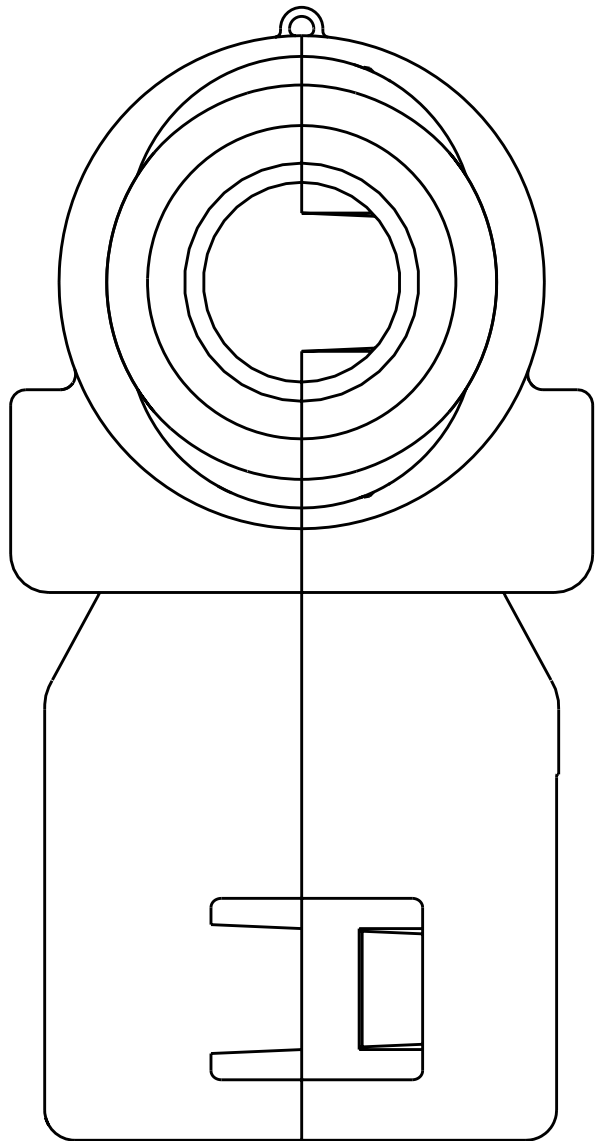
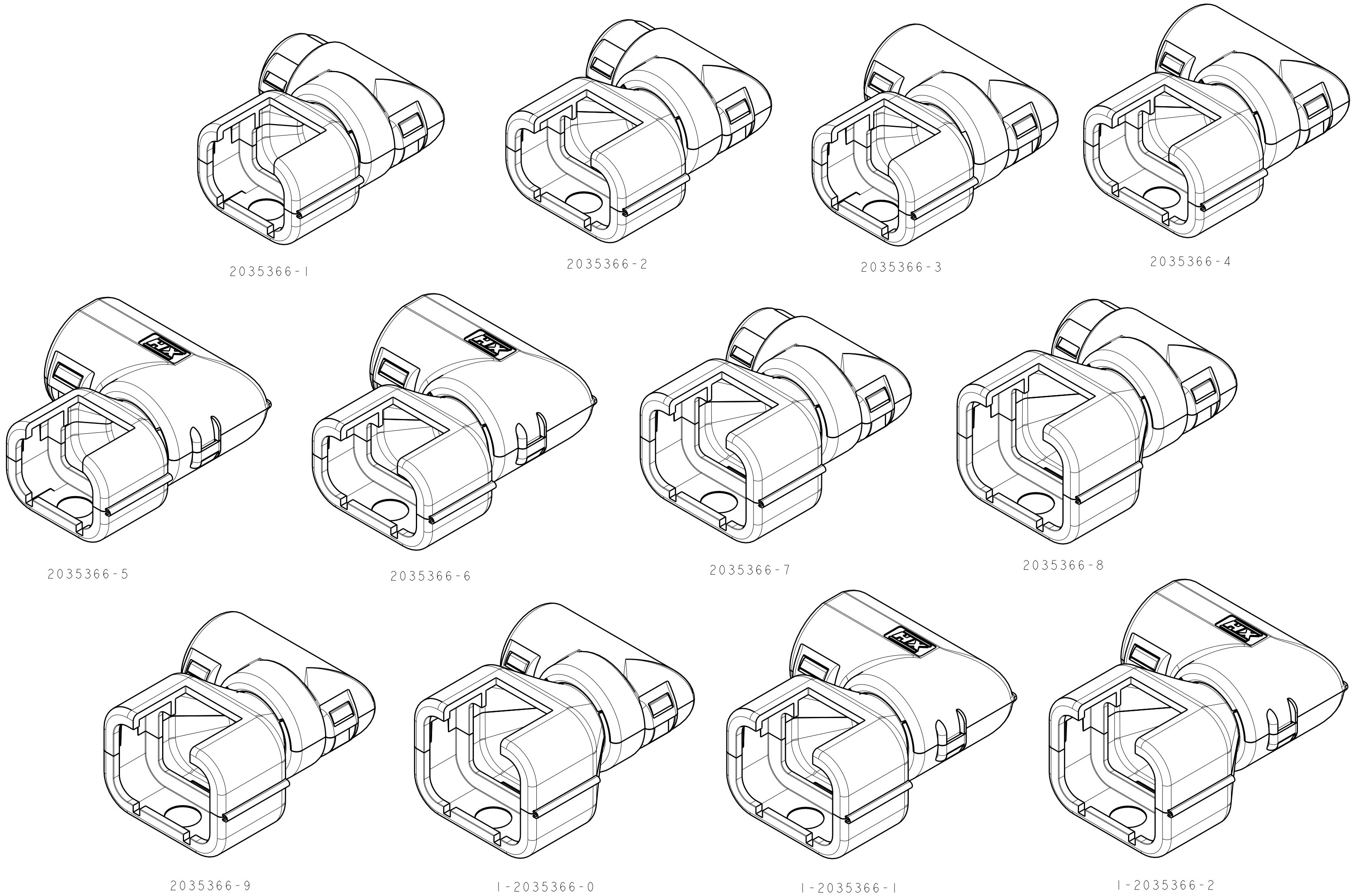


LOC	DIST	REVISIONS					
BV	00	P	LTR	DESCRIPTION	DATE	DWN	APVD
		A		PRELIMINARY RELEASE	08AUG08	JM	JM
		B		REDRAWN AND ADD -5 THRU 1--2	27JUL09	RW	RB
		BI		RELEASED PER ECO-09-017979	03AUG2009	DD	RB




SECTION A-A



1. ELBOW DESIGN ALLOWS FOR 360° EXIT ROTATION

16.5	10.6	45.8	27.7	22.2	22.5	17.0	13	16	6	1-2035366-2
16.5	10.6	43.8	27.7	22.2	20.6	15.1	13	16	4	1-2035366-1
13.5	7.2	42.1	27.7	22.2	22.5	17.0	10	12	6	1-2035366-0
13.5	7.2	40.1	27.7	22.2	20.6	15.1	10	12	4	2035366-9
10.4	7.2	42.1	27.7	22.2	22.5	17.0	7.5	08	6	2035366-8
10.4	7.2	40.1	27.7	22.2	20.6	15.1	7.5	08	4	2035366-7
16.5	10.6	42.7	27.3	21.6	17.1	11.6	13	16	3	2035366-6
16.5	10.6	40.2	23.2	17.5	17.0	11.6	13	16	2	2035366-5
13.5	7.2	39.0	27.3	21.6	17.1	11.6	10	12	3	2035366-4
13.5	7.2	36.5	23.2	17.5	17.0	11.6	10	12	2	2035366-3
10.4	7.2	39.0	27.3	21.6	17.1	11.6	7.5	08	3	2035366-2
10.4	7.2	36.5	23.2	17.5	17.0	11.6	7.5	08	2	2035366-1
G	F	E	D	C	B	A	NW NC CONDUIT SIZE		CONNECTOR POSITIONS	TYCO ELECTRONICS PART NO.

1. THIS DRAWING IS THE PROPERTY OF TYCO ELECTRONICS, INC. IT IS TO BE USED FOR THE MANUFACTURE OF THE PARTS SPECIFICALLY IDENTIFIED HEREON. IT IS NOT TO BE REPRODUCED OR COPIED FOR ANY OTHER PURPOSE WITHOUT THE WRITTEN PERMISSION OF TYCO ELECTRONICS, INC.		DWN 27JUL2009 RUSTY WORTHINGTON	Tyco Electronics Harrisburg, PA 17105-3608	
APVD ROGER BALTER		CHK 27JUL2009 ROGER BALTER	NAME BACKSHELL, RIGHT-ANGLE, LOW PROFILE PLUG CONNECTOR, NW/NC CONDUIT AMPSEAL 16	
DIMENSIONS:		TOLERANCES UNLESS OTHERWISE SPECIFIED:		PRODUCT SPEC
mm		9 PLC ±0.5 3 PLC ± 5 PLC ± 4 PLC ±		APPLICATION SPEC
		FINISH		SIZE CAGE CODE DRAWING NO
MATERIAL NYLON 6/6, BLACK		WEIGHT		RESTRICTED TO
		CUSTOMER DRAWING		
		SCALE 2:1		SHEET 1 OF 1 REV B