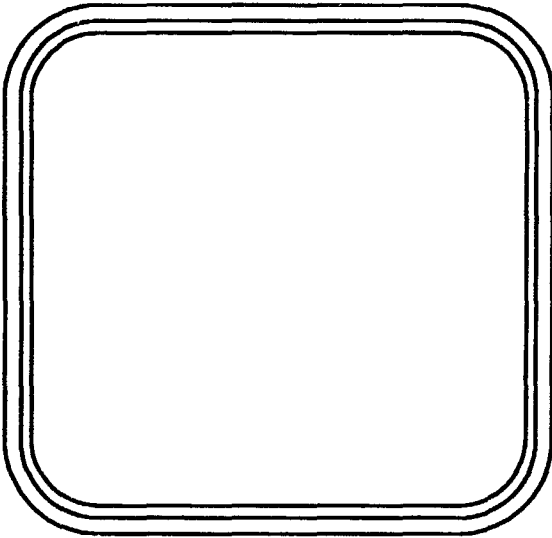
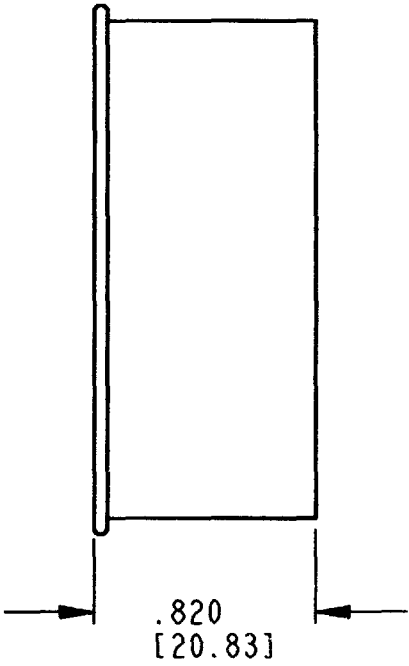
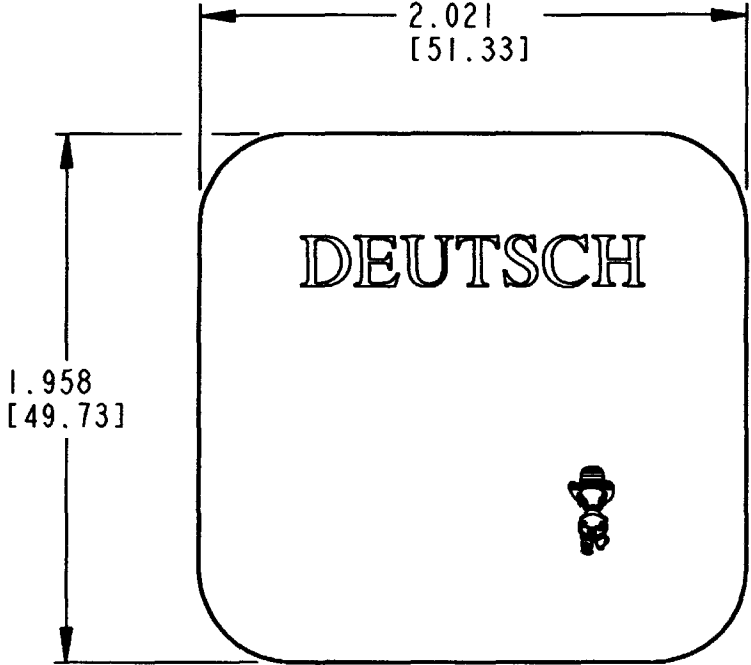


REV
NC 0515-010-4005

| REVISIONS | | | |
|-----------|-----------------------------|---------|----------|
| SYM | DESCRIPTION | DATE | APPROVED |
| NC | NEW RELEASE PER E.O. P18647 | 7-29-04 | RDR |
| | | | |
| | | | |
| | | | |



4. MATERIAL: YELLOW PLASTIC
3. THIS DUST CAP FITS ON THE FOLLOWING PLUGS:
AEC16-40S*-****; AEC16-40S*E-****; AEC16-40S*T-****
AEC16-40SU-****; AEC16-40SUT-****
(* = A,B,C,D KEYS; **** = ALL MODIFICATIONS).
CONSULT FACTORY FOR MODS.
2. DIMENSION TOLERANCE: $\pm .050$ [1.27].
1. DIMENSIONS ARE IN INCHES [mm].

NOTES:

| SIGNATURE & DATE | |
|------------------|---------------------|
| DR | D. MEYER 07/27/04 |
| CHK | X. Schaefer 7/29/04 |
| PE | D. Meyer 7/29/04 |
| APPD | R. Rood 7-29-04 |
| SCALE | NONE WT |

DUST CAP, PLUG
AEC SERIES

ENVELOPE

| | |
|---|-------------------------|
| CP | MATL. CODE |
| The Deutsch Company DEUTSCH I.P.D. 3850 INDUSTRIAL AVE. HEMET, CALIF. 92545 | |
| B | 0515-010-4005 |
| DWG SIZE | CODE 11139 SHEET 1 OF 1 |