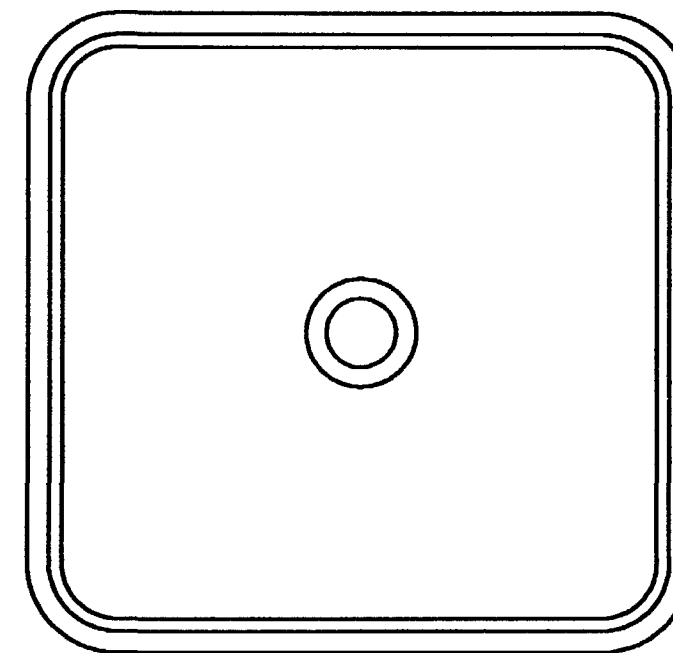
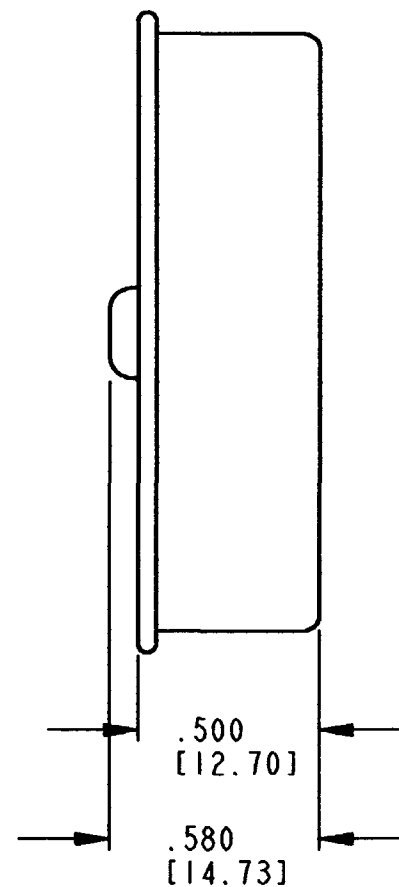
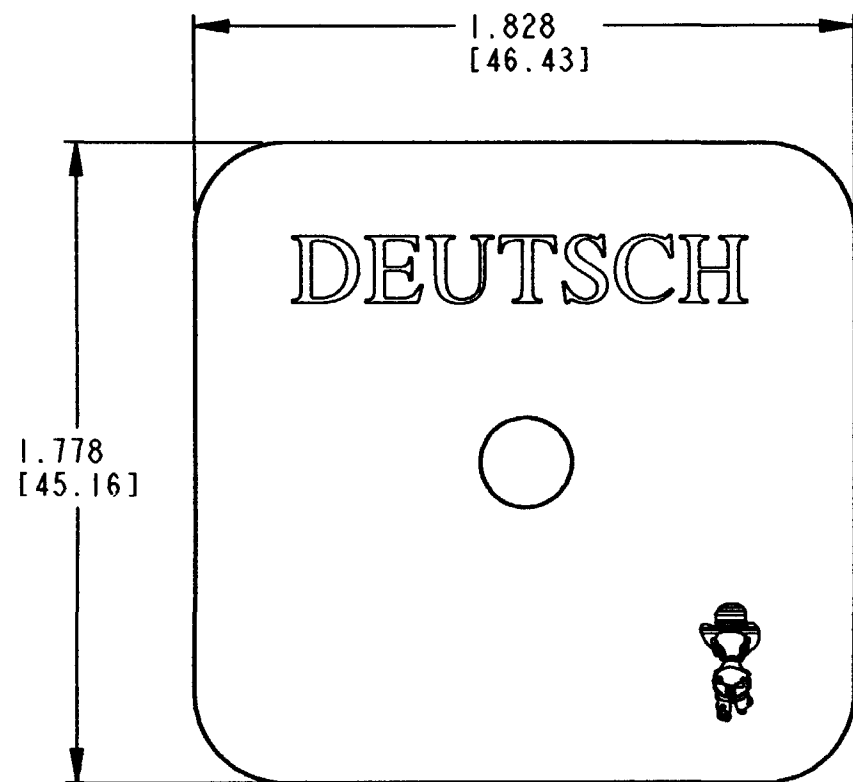


REV
NC 0515-009-4005

| REVISIONS | | | |
|-----------|-----------------------------|---------|----------|
| SYM | DESCRIPTION | DATE | APPROVED |
| NC | NEW RELEASE PER E.O. P19026 | 8-31-05 | RDR |
| | | | |
| | | | |
| | | | |



4. MATERIAL: YELLOW PLASTIC
3. THIS DUST CAP FITS ON THE FOLLOWING CONNECTORS:
AEC14-40P*-****
AEC17-40P*-****
(* = A,B,C,D,AB,CD KEYS; **** = ALL MODIFICATIONS)
CONSULT FACTORY FOR MODS.
2. DIMENSION TOLERANCE: $\pm .050$ [1.27].

NOTES: 1. DIMENSIONS ARE IN INCHES [mm].

| SIGNATURE & DATE | |
|------------------|----------------------------|
| DR | J. LIM 8/26/05 |
| CHK | <i>[Signature]</i> 8/31/05 |
| PE | J. Lim 8/26/05 |
| | |
| APPD | <i>[Signature]</i> 8/26/05 |
| SCALE | NONE |

DUST CAP
AEC SERIES

ENVELOPE

| | |
|---|-------------------------|
| CP | MATL. CODE |
| The Deutsch Company DEUTSCH I.P.D. 3850 INDUSTRIAL AVE. HEMET, CALIF. 92545 | |
| B | 0515-009-4005 |
| DWG SIZE | CODE 11139 SHEET 1 OF 1 |