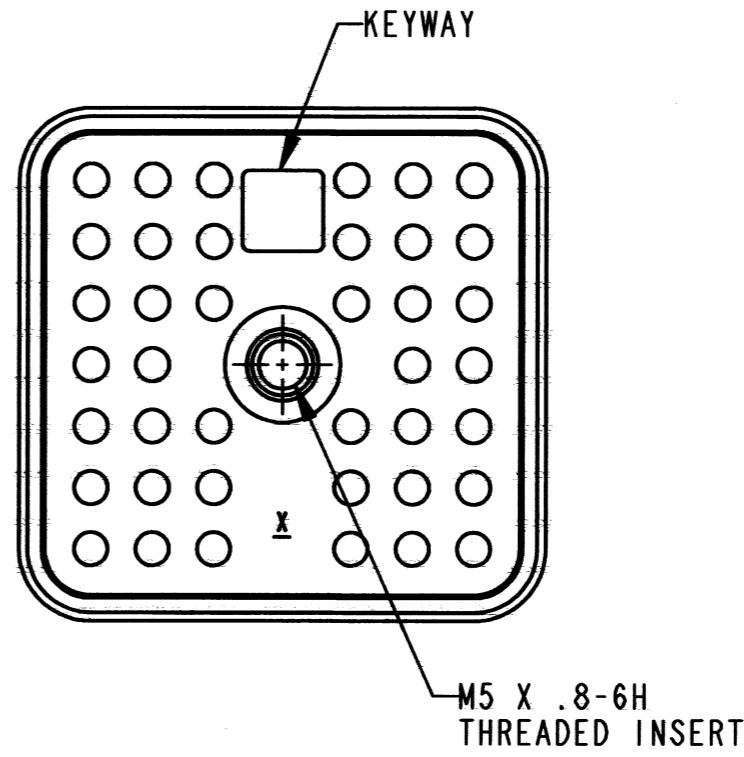
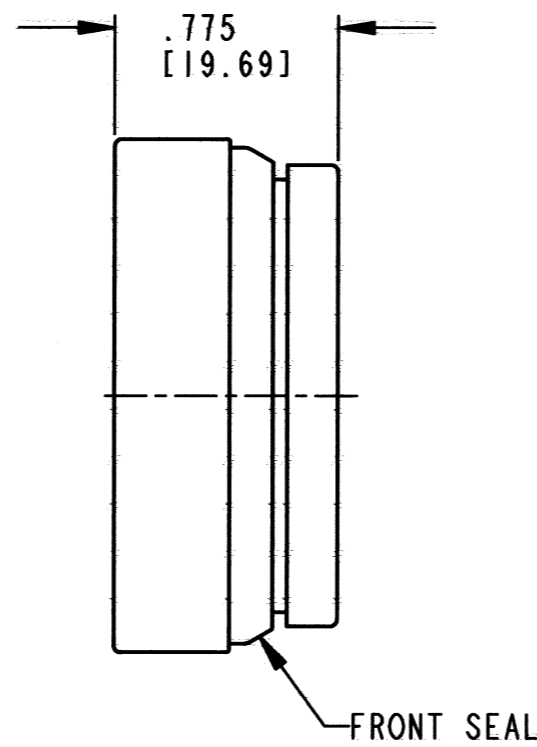
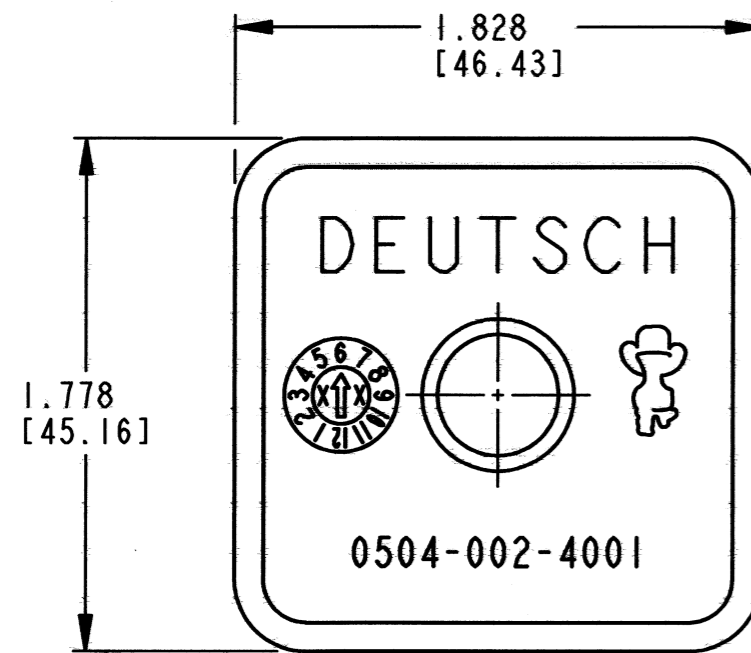


REV
C 0504-002-4001

REVISIONS			
SYM	DESCRIPTION	DATE	APPROVED
NC	NEW RELEASE PER E.O. A11171	7-30-91	J.A.
A	REVISED PER E.O. A13713	1-26-94	J.A.
B	REVISED & REDRAWN PER E.O. P20495	4-19-10	R.D.R.
C	REVISED PER E.O. P21257	1-9-12	RDR



4. MATERIAL: HOUSING: PLASTIC (BLACK); FRONT SEAL: RUBBER; THREADED INSERT: STEEL
3. THIS DUST CAP MATES WITH AEC14-40P*-**** AND AEC17-40P*-**** RECEPTACLE (*=A,B,C,D; ****=ALL MODIFICATIONS). CONSULT FACTORY FOR MODS.
2. DIMENSION TOLERANCE: $\pm .025$ [.64].
1. DIMENSIONS ARE IN INCHES [MM].

NOTES:

SIGNATURE & DATE	
DR	J. APOSTOL 19 APR 2010
CHK	D. Hasibuan 1/6/12
PE	D. Hasibuan 1/6/12
APPD	D. Meyer 1/6/12
SCALE	NONE

ENVIRONMENTAL
DUST CAP

AEC SERIES

ENVELOPE

EP	MATL. CODE
3850 INDUSTRIAL AVE. HEMET, CA 92545	
DEUTSCH INDUSTRIAL	
B	0504-002-4001
DWG SIZE	CODE 11139 SHEET OF