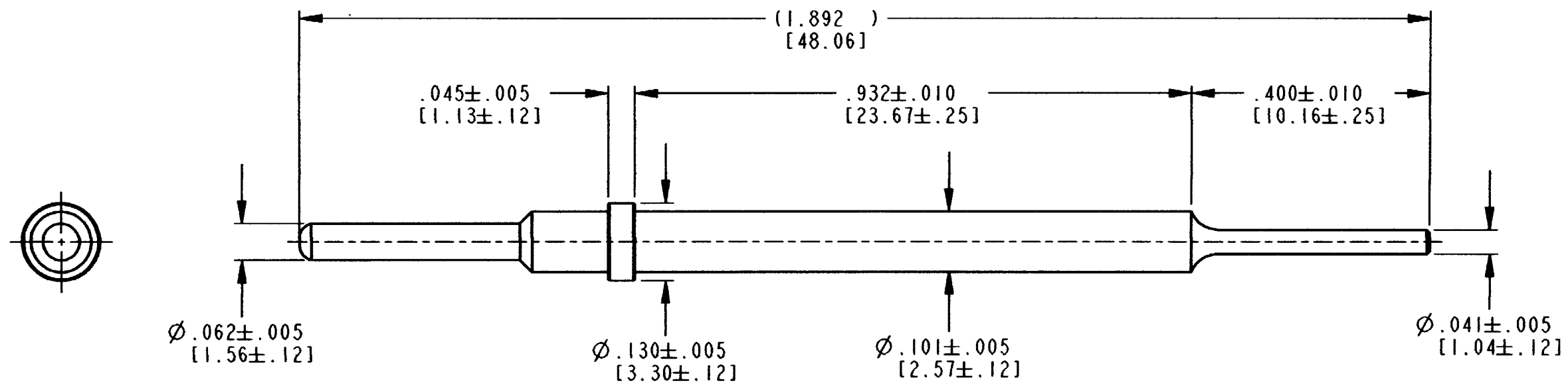


REV
NC 0460-244-16**

REVISIONS			
SYM	DESCRIPTION	DATE	APPROVED
NC	NEW RELEASE PER E.O. P19398	11-17-06	ADR



3. FOR CONTACT APPLICATION, SEE DRAWING 0425-202-0000.

2. WHEN ** = 31: PLATING IS GOLD.
WHEN ** = 141: PLATING IS NICKEL.


1. DIMENSIONS ARE IN INCHES [mm].

NOTES:

SIGNATURE & DATE	
DR	J. APOSTOL 24OCT2006
CHK	R. Ried 11/02/06
PE	D. Meyer 10/27/06
APPD	R. Ried 11-17-06
SCALE	NONE WT

CONTACT PIN
SIZE 16
EXTENSION

ENVELOPE

EP	MATERIAL CODE	
The Deutsch Company  DEUTSCH I.P.D. 3850 INDUSTRIAL AVE. HEMET, CALIF. 92545		
B	0460-244-16**	
DWG SIZE	CODE 11139	SHEET OF