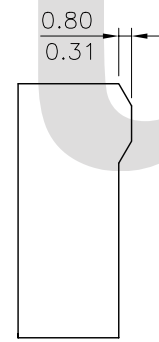
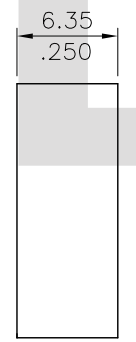
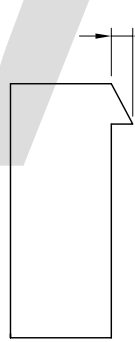
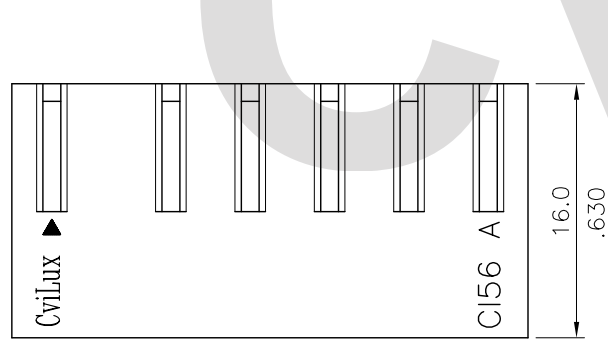
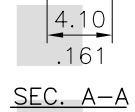
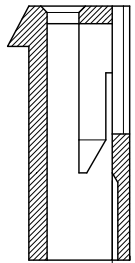
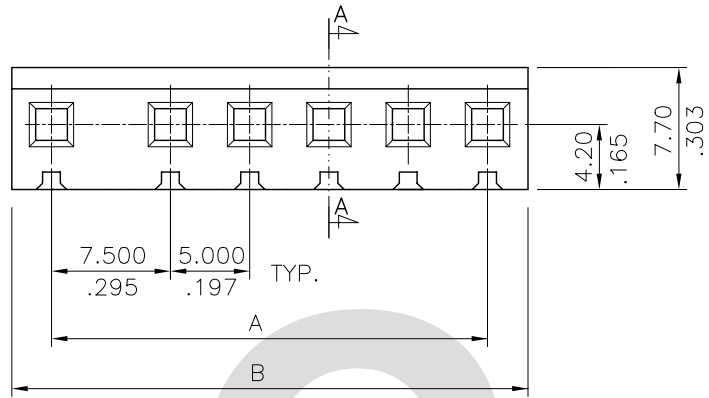


* Material: Nylon 66 UL 94V-2
Color Nature

Ordering Code:

CI56 ** S 00 **
① ② ③ ④ ⑤

- ① Series No.
- ② No. of Circuits: 02~10
- ③ S= Connector housing
- ④ Color Option: 00= Color Nature
- ⑤ RIB Option:
00= With Locking Ramp RIB
0R= Without Locking RIB
DR= With Low Force Locking trapezoid RIB




Circuits	Dimension	
	A	B
2	7.50(.295)	12.5(.492)
3	12.50(.492)	17.5(.689)
4	17.50(.689)	22.5(.886)
5	22.50(.886)	27.5(1.083)
6	27.50(1.083)	32.5(1.280)
7	32.50(1.280)	37.5(1.476)
8	37.50(1.476)	42.5(1.673)
9	42.50(1.673)	47.5(1.870)
10	47.50(1.870)	52.5(2.067)

P/N:CI56**S0000

P/N:CI56**S000R

P/N:CI56**S00DR

RoHS Compliant

4						UNIT: mm / inch	TITLE: 7.50-5.00MM (.295"-1.97") CRIMP TERMINAL HOUSING	 瀚荃股份有限公司 CviLux Corporation
3						TOLERANCE UNLESS OTHERWISE SPECIFIED	MATERIAL:	
2						.X ± 0.38/.015 X.* ± 1*	FINISH:	DRAWING NO. CI5601SE PART NO. CI56**S00**
1	Eager	10/03-07'	ECN07410			.XX ± 0.25/.010 .X.* ±		SCALE 2 / 1 SHEET 1 OF 1
SYMBOL	NAME	DATE	REVISIONS	APPROVED BY:	DATE	.XXX ± 0.15/.006 .XX* ±		

CVILUX CORP.
2007.10.09
ISSUED

DRAWN BY: Eager
ENGINEER: Clark
CHECKED BY: Eisley
APPROVED BY: David

DATE: 10/03-07'
10/05-07'
10/05-07'
10/05-07'