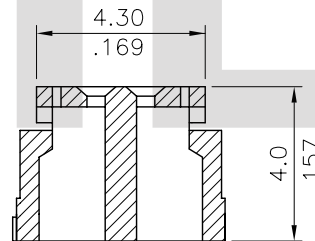
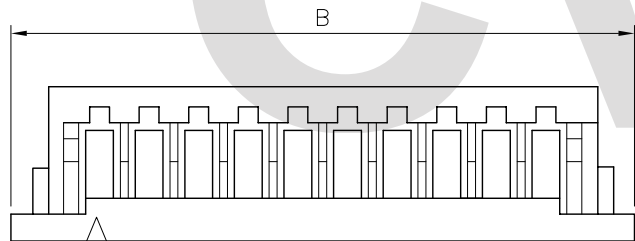


1ST Circuit Position



Material: Nylon 66 UL 94V-0

Ordering Code:

CI47 \*\* SOD 90  
 ① ② ③ ④

- ① Series No.
- ② No. of Circuits
- ③ SOD= Dual row housing
- ④ Other option: 90= Color Gray(Standard)

Circuits	Dimension		
	A	B	C
10	5.00(.197)	10.3(.406)	8.00(.315)
20	11.25(.443)	16.6(.654)	14.25(.561)
30	17.75(.700)	23.1(.909)	20.50(.807)
40	23.75(.935)	29.1(1.146)	26.75(1.053)

RoHS Compliant

④						DATE	UNIT: mm / inch	TITLE: 1.25MM(.049") CRIMP TERMINAL DUAL ROW HOUSING	瀚荃股份有限公司 CviLux Corporation		
③					DRAWN BY: Alphonse	09/20-02'	TOLERANCE UNLESS OTHERWISE SPECIFIED	MATERIAL:		DRAWING NO. CI4702SB	PART NO. CI47**SOD90
②					ENGINEER: David	09/20-02'	.X ± 0.30/.012	X.' ± '1	FINISH:	SCALE 5 / 1	SHEET 1 OF 1
①					CHECKED BY: David	09/20-02'	.XX ± 0.20/.008	.X' ±			
SYM	NAME	DATE	REVISIONS		APPROVED BY: Alex	09/20-02'	.XXX ± 0.10/.004	.XX' ±			