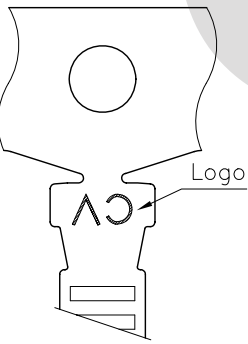


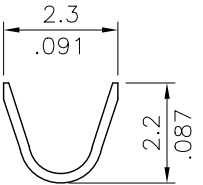
Wire Range	Insulation Diameter	Reel Q'ty
AWG #22~#28	1.90 (.075) MAX.	10,000 PCS.

Ordering Code:
 CI25 T02 1 P E 0
 ① ② ③ ④ ⑤ ⑥

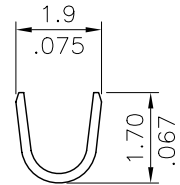
- ① Series No.
- ② Type: T02= AWG #22 ~ #28
- ③ Plating: 1= 2.03μm(80μ") Min. Tin Plated over 0.76μm(30μ") Nickel
- ④ Material: P= Phosphor Bronze
- ⑤ Plating method: E= Pre-tinned
- ⑥ Option: 0= Standard



BACK VIEW



SEC: A-A



SEC: B-B

RoHS Compliant

④						DATE	UNIT: mm / inch	TITLE:	瀚荃股份有限公司 CviLux Corporation
③	Eager	6/14/06'	ECN06193	DRAWN BY:	Eager	06/17-06'	TOLERANCE UNLESS OTHERWISE SPECIFIED	2.50MM(.098") CRIMP TERMINAL	
②	SUN	08/04-04	ECN04298	ENGINEER:	Eisley	06/22-06'	.X ± 0.20/.008 X' ± 1'	MATERIAL:	
①	JASON	09/08-03	ECN03275, ECR03018-0	CHECKED BY:	Alex	06/22-06'	.XX ± 0.10/.004 X' ±	FINISH:	
SYM	NAME	DATE	REVISIONS	APPROVED BY:	Alex	06/22-06'	.XXX ± 0.05/.002 .XX' ±		DRAWING NO. CI2505SG PART NO. CI25T021PE0
									SCALE 6 / 1 SHEET 1 OF 1

CIVILUX.CORP
 2006.06.22
 ISSUED