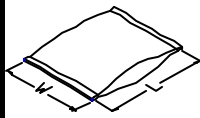




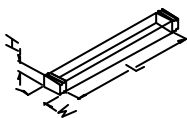
SERIES OR P/N	CIRCUITS	PACKING METHOD CODE	INNER PACKING NO.	INNER PACKING SIZE (CM)			INNER PACKING QTY	INSIDE CARTON NO.	INSIDE CARTON SIZE (CM)			PCS / INSIDE CARTON	CARTON NO.	CARTON SIZE (CM)			PCS / CARTON	G.W REF. (KG)
				L/D	W	H			L	W	H			L	W	H		
CH6706*V*00	6	F	PACK-PBC002-C	29.00	23.00	0.08	2000	PACK-IBC002-C	31.20	24.30	11.00	20000	PACK-CTC002-C	34.50	26.00	25.30	40000	
CH6708*V*00	8	F	PACK-PBC002-C	29.00	23.00	0.08	2000	PACK-IBC002-C	31.20	24.30	11.00	20000	PACK-CTC002-C	34.50	26.00	25.30	40000	
CH6710*V*00	10	F	PACK-PBC002-C	29.00	23.00	0.08	2000	PACK-IBC002-C	31.20	24.30	11.00	16000	PACK-CTC002-C	34.50	26.00	25.30	32000	
CH6712*V*00	12	F	PACK-PBC002-C	29.00	23.00	0.08	2000	PACK-IBC002-C	31.20	24.30	11.00	16000	PACK-CTC002-C	34.50	26.00	25.30	32000	
CH6714*V*00	14	F	PACK-PBC002-C	29.00	23.00	0.08	1500	PACK-IBC002-C	31.20	24.30	11.00	15000	PACK-CTC002-C	34.50	26.00	25.30	30000	
CH6716*V*00	16	F	PACK-PBC002-C	29.00	23.00	0.08	1500	PACK-IBC002-C	31.20	24.30	11.00	15000	PACK-CTC002-C	34.50	26.00	25.30	30000	
CH6718*V*00	18	F	PACK-PBC002-C	29.00	23.00	0.08	1500	PACK-IBC002-C	31.20	24.30	11.00	15000	PACK-CTC002-C	34.50	26.00	25.30	30000	
CH6720*V*00	20	F	PACK-PBC002-C	29.00	23.00	0.08	1500	PACK-IBC002-C	31.20	24.30	11.00	12000	PACK-CTC002-C	34.50	26.00	25.30	24000	
CH6722*V*00	22	F	PACK-PBC002-C	29.00	23.00	0.08	1500	PACK-IBC002-C	31.20	24.30	11.00	12000	PACK-CTC002-C	34.50	26.00	25.30	24000	
CH6724*V*00	24	F	PACK-PBC002-C	29.00	23.00	0.08	1500	PACK-IBC002-C	31.20	24.30	11.00	12000	PACK-CTC002-C	34.50	26.00	25.30	24000	
CH6726*V*00	26	F	PACK-PBC002-C	29.00	23.00	0.08	1000	PACK-IBC002-C	31.20	24.30	11.00	10000	PACK-CTC002-C	34.50	26.00	25.30	20000	
CH6728*V*00	28	F	PACK-PBC002-C	29.00	23.00	0.08	1000	PACK-IBC002-C	31.20	24.30	11.00	10000	PACK-CTC002-C	34.50	26.00	25.30	20000	
CH6730*V*00	30	F	PACK-PBC002-C	29.00	23.00	0.08	1000	PACK-IBC002-C	31.20	24.30	11.00	10000	PACK-CTC002-C	34.50	26.00	25.30	20000	
CH6732*V*00	32	F	PACK-PBC002-C	29.00	23.00	0.08	1000	PACK-IBC002-C	31.20	24.30	11.00	8000	PACK-CTC002-C	34.50	26.00	25.30	16000	
CH6734*V*00	34	F	PACK-PBC002-C	29.00	23.00	0.08	1000	PACK-IBC002-C	31.20	24.30	11.00	8000	PACK-CTC002-C	34.50	26.00	25.30	16000	
CH6736*V*00	36	F	PACK-PBC002-C	29.00	23.00	0.08	1000	PACK-IBC002-C	31.20	24.30	11.00	8000	PACK-CTC002-C	34.50	26.00	25.30	16000	
CH6738*V*00	38	F	PACK-PBC002-C	29.00	23.00	0.08	1000	PACK-IBC002-C	31.20	24.30	11.00	6000	PACK-CTC002-C	34.50	26.00	25.30	12000	
CH6740*V*00	40	F	PACK-PBC002-C	29.00	23.00	0.08	1000	PACK-IBC002-C	31.20	24.30	11.00	6000	PACK-CTC002-C	34.50	26.00	25.30	12000	
CH6742*V*00	42	F	PACK-PBC002-C	29.00	23.00	0.08	500	PACK-IBC002-C	31.20	24.30	11.00	5000	PACK-CTC002-C	34.50	26.00	25.30	10000	
CH6744*V*00	44	F	PACK-PBC002-C	29.00	23.00	0.08	500	PACK-IBC002-C	31.20	24.30	11.00	5000	PACK-CTC002-C	34.50	26.00	25.30	10000	
CH6746*V*00	46	F	PACK-PBC002-C	29.00	23.00	0.08	500	PACK-IBC002-C	31.20	24.30	11.00	5000	PACK-CTC002-C	34.50	26.00	25.30	10000	
CH6748*V*00	48	F	PACK-PBC002-C	29.00	23.00	0.08	500	PACK-IBC002-C	31.20	24.30	11.00	5000	PACK-CTC002-C	34.50	26.00	25.30	10000	
CH6750*V*00	50	F	PACK-PBC002-C	29.00	23.00	0.08	500	PACK-IBC002-C	31.20	24.30	11.00	4000	PACK-CTC002-C	34.50	26.00	25.30	8000	
CH6752*V*00	52	F	PACK-PBC002-C	29.00	23.00	0.08	500	PACK-IBC002-C	31.20	24.30	11.00	4000	PACK-CTC002-C	34.50	26.00	25.30	8000	
CH6754*V*00	54	F	PACK-PBC002-C	29.00	23.00	0.08	500	PACK-IBC002-C	31.20	24.30	11.00	4000	PACK-CTC002-C	34.50	26.00	25.30	8000	
CH6756*V*00	56	F	PACK-PBC002-C	29.00	23.00	0.08	500	PACK-IBC002-C	31.20	24.30	11.00	4000	PACK-CTC002-C	34.50	26.00	25.30	8000	
CH6758*V*00	58	F	PACK-PBC002-C	29.00	23.00	0.08	500	PACK-IBC002-C	31.20	24.30	11.00	3000	PACK-CTC002-C	34.50	26.00	25.30	6000	

PACKING METHOD (包裝方式):

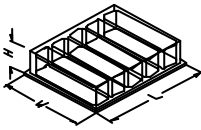
1 PVC BAG (塑膠袋)
SIZE = L * W



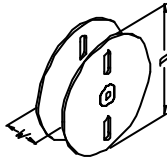
2 TUBE (塑膠管)
SIZE = L * W * H



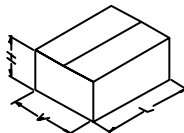
3 PVC TRAY (塑膠盤)
SIZE = L * W * H



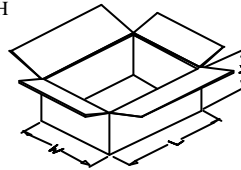
4 REEL (紙盤)
SIZE = D * W



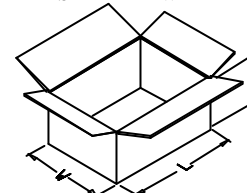
5 BOX (內紙盒)
SIZE = L * W * H



6 INSIDE CARTON (內箱)
SIZE = L * W * H



7 OUTSIDE CARTON (外箱)
SIZE = L * W * H



PACKING METHOD CODE (包裝方式代碼):

- A = 1 7
- B = 2 7
- C = 3 7
- D = 4 7
- E = 5 7
- F = 1 6 7
- G = 2 6 7
- H = 3 6 7

核准: SMITH

審核: JACKAL

製訂: YI



SERIES OR P/N	CIRCUITS	PACKING METHOD CODE	INNER PACKING NO.	INNER PACKING SIZE (CM)			INNER PACKING Q'TY	INSIDE CARTON NO.	INSIDE CARTON SIZE (CM)			PCS / INSIDE CARTON	CARTON NO.	CARTON SIZE (CM)			PCS / CARTON	G.W REF. (KG)
				L/D	W	H			L	W	H			L	W	H		
CH5760*M*00.*P	60	G	PACK-TBC031-C	60.00	0.90	1.57	15	PACK-IBC014-C	60.7	6.0	10.2	450	PACK-CTC011-C	63.00	15.00	23.00	1800	
CH5762*M*00.*P	62	G	PACK-TBC031-C	60.00	0.90	1.57	14	PACK-IBC014-C	60.7	6.0	10.2	420	PACK-CTC011-C	63.00	15.00	23.00	1680	
CH5764*M*00.*P	64	G	PACK-TBC031-C	60.00	0.90	1.57	14	PACK-IBC014-C	60.7	6.0	10.2	420	PACK-CTC011-C	63.00	15.00	23.00	1680	
CH5766*M*00.*P	66	G	PACK-TBC031-C	60.00	0.90	1.57	13	PACK-IBC014-C	60.7	6.0	10.2	390	PACK-CTC011-C	63.00	15.00	23.00	1560	
CH5768*M*00.*P	68	G	PACK-TBC031-C	60.00	0.90	1.57	13	PACK-IBC014-C	60.7	6.0	10.2	390	PACK-CTC011-C	63.00	15.00	23.00	1560	
CH5770*M*00.*P	70	G	PACK-TBC031-C	60.00	0.90	1.57	13	PACK-IBC014-C	60.7	6.0	10.2	390	PACK-CTC011-C	63.00	15.00	23.00	1560	
CH5772*M*00.*P	72	G	PACK-TBC031-C	60.00	0.90	1.57	12	PACK-IBC014-C	60.7	6.0	10.2	360	PACK-CTC011-C	63.00	15.00	23.00	1440	
CH5774*M*00.*P	74	G	PACK-TBC031-C	60.00	0.90	1.57	12	PACK-IBC014-C	60.7	6.0	10.2	360	PACK-CTC011-C	63.00	15.00	23.00	1440	
CH5776*M*00.*P	76	G	PACK-TBC031-C	60.00	0.90	1.57	12	PACK-IBC014-C	60.7	6.0	10.2	360	PACK-CTC011-C	63.00	15.00	23.00	1440	
CH5778*M*00.*P	78	G	PACK-TBC031-C	60.00	0.90	1.57	11	PACK-IBC014-C	60.7	6.0	10.2	330	PACK-CTC011-C	63.00	15.00	23.00	1320	
CH5780*M*00.*P	80	G	PACK-TBC031-C	60.00	0.90	1.57	11	PACK-IBC014-C	60.7	6.0	10.2	330	PACK-CTC011-C	63.00	15.00	23.00	1320	
CH5782*M*00.*P	82	G	PACK-TBC031-C	60.00	0.90	1.57	11	PACK-IBC014-C	60.7	6.0	10.2	330	PACK-CTC011-C	63.00	15.00	23.00	1320	
CH5784*M*00.*P	84	G	PACK-TBC031-C	60.00	0.90	1.57	10	PACK-IBC014-C	60.7	6.0	10.2	300	PACK-CTC011-C	63.00	15.00	23.00	1200	
CH5786*M*00.*P	86	G	PACK-TBC031-C	60.00	0.90	1.57	10	PACK-IBC014-C	60.7	6.0	10.2	300	PACK-CTC011-C	63.00	15.00	23.00	1200	
CH5788*M*00.*P	88	G	PACK-TBC031-C	60.00	0.90	1.57	10	PACK-IBC014-C	60.7	6.0	10.2	300	PACK-CTC011-C	63.00	15.00	23.00	1200	
CH5790*M*00.*P	90	G	PACK-TBC031-C	60.00	0.90	1.57	10	PACK-IBC014-C	60.7	6.0	10.2	300	PACK-CTC011-C	63.00	15.00	23.00	1200	
CH5792*M*00.*P	92	G	PACK-TBC031-C	60.00	0.90	1.57	9	PACK-IBC014-C	60.7	6.0	10.2	270	PACK-CTC011-C	63.00	15.00	23.00	1080	
CH5794*M*00.*P	94	G	PACK-TBC031-C	60.00	0.90	1.57	9	PACK-IBC014-C	60.7	6.0	10.2	270	PACK-CTC011-C	63.00	15.00	23.00	1080	
CH5796*M*00.*P	96	G	PACK-TBC031-C	60.00	0.90	1.57	9	PACK-IBC014-C	60.7	6.0	10.2	270	PACK-CTC011-C	63.00	15.00	23.00	1080	
CH5798*M*00.*P	98	G	PACK-TBC031-C	60.00	0.90	1.57	9	PACK-IBC014-C	60.7	6.0	10.2	270	PACK-CTC011-C	63.00	15.00	23.00	1080	
CH57X1*M*00.*P	100	G	PACK-TBC031-C	60.00	0.90	1.57	9	PACK-IBC014-C	60.7	6.0	10.2	270	PACK-CTC011-C	63.00	15.00	23.00	1080	

PACKING METHOD (包裝方式) :

<p>1 PVC BAG (塑膠袋) SIZE = L * W</p>	<p>2 TUBE (塑膠管) SIZE = L * W * H</p>	<p>3 (塑膠盒) SIZE = L * W * H</p>	<p>4 REEL (紙盤) SIZE = D * W</p>	<p>5 BOX (內紙盒) SIZE = L * W * H</p>	<p>6 INSIDE CARTON (內箱) SIZE = L * W * H</p>	<p>7 OUTSIDE CARTON (外箱) SIZE = L * W * H</p>	<p>PACKING METHOD CODE (包裝方式代碼) :</p> <p>A = 1 7 B = 2 7 C = 3 7 D = 4 7 E = 5 7 E = 5 7 G = 2 6 7 H = 1 3 7</p>
---	--	-------------------------------------	-------------------------------------	---	--	---	--