



瀚荃股份有限公司  
CviLux Corporation  
PACKING STANDARD

製訂日期：2004/03/14

SERIES OR P/N	CIRCUITS	PACKING METHOD CODE	INNER PACKING NO.	INNER PACKING SIZE (CM)			INNER PACKING QTY	INSIDE CARTON NO.	INSIDE CARTON SIZE (CM)			PCS / INSIDE CARTON	CARTON NO.	CARTON SIZE (CM)			PCS / CARTON	G.W REF. (KG)
				L/D	W	H			L	W	H			L	W	H		
CH2102*M*00-*0	2	G	PACK-TBC034-C	60.00	0.69	1.19	145	PACK-IBC014-C	60.7	6.0	10.2	10150	PACK-CTC011-C	63.00	15.00	23.00	40600	
CH2103*M*00-*0	3	G	PACK-TBC034-C	60.00	0.69	1.19	96	PACK-IBC014-C	60.7	6.0	10.2	6720	PACK-CTC011-C	63.00	15.00	23.00	26880	
CH2104*M*00-*0	4	G	PACK-TBC034-C	60.00	0.69	1.19	72	PACK-IBC014-C	60.7	6.0	10.2	5040	PACK-CTC011-C	63.00	15.00	23.00	20160	
CH2105*M*00-*0	5	G	PACK-TBC034-C	60.00	0.69	1.19	58	PACK-IBC014-C	60.7	6.0	10.2	4060	PACK-CTC011-C	63.00	15.00	23.00	16240	
CH2106*M*00-*0	6	G	PACK-TBC034-C	60.00	0.69	1.19	48	PACK-IBC014-C	60.7	6.0	10.2	3360	PACK-CTC011-C	63.00	15.00	23.00	13440	
CH2107*M*00-*0	7	G	PACK-TBC034-C	60.00	0.69	1.19	41	PACK-IBC014-C	60.7	6.0	10.2	2870	PACK-CTC011-C	63.00	15.00	23.00	11480	
CH2108*M*00-*0	8	G	PACK-TBC034-C	60.00	0.69	1.19	36	PACK-IBC014-C	60.7	6.0	10.2	2520	PACK-CTC011-C	63.00	15.00	23.00	10080	
CH2109*M*00-*0	9	G	PACK-TBC034-C	60.00	0.69	1.19	32	PACK-IBC014-C	60.7	6.0	10.2	2240	PACK-CTC011-C	63.00	15.00	23.00	8960	
CH2110*M*00-*0	10	G	PACK-TBC034-C	60.00	0.69	1.19	29	PACK-IBC014-C	60.7	6.0	10.2	2030	PACK-CTC011-C	63.00	15.00	23.00	8120	
CH2111*M*00-*0	11	G	PACK-TBC034-C	60.00	0.69	1.19	26	PACK-IBC014-C	60.7	6.0	10.2	1820	PACK-CTC011-C	63.00	15.00	23.00	7280	
CH2112*M*00-*0	12	G	PACK-TBC034-C	60.00	0.69	1.19	24	PACK-IBC014-C	60.7	6.0	10.2	1680	PACK-CTC011-C	63.00	15.00	23.00	6720	
CH2113*M*00-*0	13	G	PACK-TBC034-C	60.00	0.69	1.19	22	PACK-IBC014-C	60.7	6.0	10.2	1540	PACK-CTC011-C	63.00	15.00	23.00	6160	
CH2114*M*00-*0	14	G	PACK-TBC034-C	60.00	0.69	1.19	20	PACK-IBC014-C	60.7	6.0	10.2	1400	PACK-CTC011-C	63.00	15.00	23.00	5600	
CH2115*M*00-*0	15	G	PACK-TBC034-C	60.00	0.69	1.19	19	PACK-IBC014-C	60.7	6.0	10.2	1330	PACK-CTC011-C	63.00	15.00	23.00	5320	
CH2116*M*00-*0	16	G	PACK-TBC034-C	60.00	0.69	1.19	18	PACK-IBC014-C	60.7	6.0	10.2	1260	PACK-CTC011-C	63.00	15.00	23.00	5040	
CH2117*M*00-*0	17	G	PACK-TBC034-C	60.00	0.69	1.19	17	PACK-IBC014-C	60.7	6.0	10.2	1190	PACK-CTC011-C	63.00	15.00	23.00	4760	
CH2118*M*00-*0	18	G	PACK-TBC034-C	60.00	0.69	1.19	16	PACK-IBC014-C	60.7	6.0	10.2	1120	PACK-CTC011-C	63.00	15.00	23.00	4480	
CH2119*M*00-*0	19	G	PACK-TBC034-C	60.00	0.69	1.19	15	PACK-IBC014-C	60.7	6.0	10.2	1050	PACK-CTC011-C	63.00	15.00	23.00	4200	
CH2120*M*00-*0	20	G	PACK-TBC034-C	60.00	0.69	1.19	14	PACK-IBC014-C	60.7	6.0	10.2	980	PACK-CTC011-C	63.00	15.00	23.00	3920	
CH2121*M*00-*0	21	G	PACK-TBC034-C	60.00	0.69	1.19	13	PACK-IBC014-C	60.7	6.0	10.2	910	PACK-CTC011-C	63.00	15.00	23.00	3640	
CH2122*M*00-*0	22	G	PACK-TBC034-C	60.00	0.69	1.19	13	PACK-IBC014-C	60.7	6.0	10.2	910	PACK-CTC011-C	63.00	15.00	23.00	3640	
CH2123*M*00-*0	23	G	PACK-TBC034-C	60.00	0.69	1.19	12	PACK-IBC014-C	60.7	6.0	10.2	840	PACK-CTC011-C	63.00	15.00	23.00	3360	
CH2124*M*00-*0	24	G	PACK-TBC034-C	60.00	0.69	1.19	12	PACK-IBC014-C	60.7	6.0	10.2	840	PACK-CTC011-C	63.00	15.00	23.00	3360	
CH2125*M*00-*0	25	G	PACK-TBC034-C	60.00	0.69	1.19	11	PACK-IBC014-C	60.7	6.0	10.2	770	PACK-CTC011-C	63.00	15.00	23.00	3080	
CH2126*M*00-*0	26	G	PACK-TBC034-C	60.00	0.69	1.19	11	PACK-IBC014-C	60.7	6.0	10.2	770	PACK-CTC011-C	63.00	15.00	23.00	3080	
CH2127*M*00-*0	27	G	PACK-TBC034-C	60.00	0.69	1.19	10	PACK-IBC014-C	60.7	6.0	10.2	700	PACK-CTC011-C	63.00	15.00	23.00	2800	
CH2128*M*00-*0	28	G	PACK-TBC034-C	60.00	0.69	1.19	10	PACK-IBC014-C	60.7	6.0	10.2	700	PACK-CTC011-C	63.00	15.00	23.00	2800	

PACKING METHOD (包裝方式) :

1 PVC BAG  
(塑膠袋)  
SIZE = L \* W

2 TUBE  
(塑膠管)  
SIZE = L \* W \* H

3 PVC TRAY  
(塑膠盒)  
SIZE = L \* W \* H

4 REEL  
(紙盤)  
SIZE = D \* W

5 BOX  
(內紙盒)  
SIZE = L \* W \* H

6 INSIDE CARTON  
(內箱)  
SIZE = L \* W \* H

7 OUTSIDE CARTON  
(外箱)  
SIZE = L \* W \* H

PACKING METHOD CODE (包裝方式代碼) :

- A = 1 → 7
- B = 2 → 7
- C = 3 → 7
- D = 4 → 7
- E = 5 → 7
- E = 5 → 7
- G = (2+1) → 6 → 7
- H = 1 → 3 → 7

核准：SMITH

審核：PETER

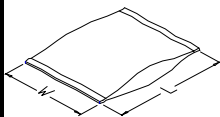
製訂：LENY



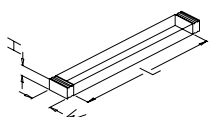
SERIES OR P/N	CIRCUITS	PACKING METHOD CODE	INNER PACKING NO.	INNER PACKING SIZE (CM)			INNER PACKING Q'TY	INSIDE CARTON NO.	INSIDE CARTON SIZE (CM)			PCS / INSIDE CARTON	CARTON NO.	CARTON SIZE (CM)			PCS / CARTON	G.W REF. (KG)
				L/D	W	H			L	W	H			L	W	H		
CH2129*M*00-*0	29	G	PACK-TBC034-C	60.00	0.69	1.19	10	PACK-IBC014-C	60.7	6.0	10.2	700	PACK-CTC011-C	63.00	15.00	23.00	2800	
CH2130*M*00-*0	30	G	PACK-TBC034-C	60.00	0.69	1.19	9	PACK-IBC014-C	60.7	6.0	10.2	630	PACK-CTC011-C	63.00	15.00	23.00	2520	
CH2131*M*00-*0	31	G	PACK-TBC034-C	60.00	0.69	1.19	9	PACK-IBC014-C	60.7	6.0	10.2	630	PACK-CTC011-C	63.00	15.00	23.00	2520	
CH2132*M*00-*0	32	G	PACK-TBC034-C	60.00	0.69	1.19	9	PACK-IBC014-C	60.7	6.0	10.2	630	PACK-CTC011-C	63.00	15.00	23.00	2520	
CH2133*M*00-*0	33	G	PACK-TBC034-C	60.00	0.69	1.19	8	PACK-IBC014-C	60.7	6.0	10.2	560	PACK-CTC011-C	63.00	15.00	23.00	2240	
CH2134*M*00-*0	34	G	PACK-TBC034-C	60.00	0.69	1.19	8	PACK-IBC014-C	60.7	6.0	10.2	560	PACK-CTC011-C	63.00	15.00	23.00	2240	
CH2135*M*00-*0	35	G	PACK-TBC034-C	60.00	0.69	1.19	8	PACK-IBC014-C	60.7	6.0	10.2	560	PACK-CTC011-C	63.00	15.00	23.00	2240	
CH2136*M*00-*0	36	G	PACK-TBC034-C	60.00	0.69	1.19	8	PACK-IBC014-C	60.7	6.0	10.2	560	PACK-CTC011-C	63.00	15.00	23.00	2240	
CH2137*M*00-*0	37	G	PACK-TBC034-C	60.00	0.69	1.19	7	PACK-IBC014-C	60.7	6.0	10.2	490	PACK-CTC011-C	63.00	15.00	23.00	1960	
CH2138*M*00-*0	38	G	PACK-TBC034-C	60.00	0.69	1.19	7	PACK-IBC014-C	60.7	6.0	10.2	490	PACK-CTC011-C	63.00	15.00	23.00	1960	
CH2139*M*00-*0	39	G	PACK-TBC034-C	60.00	0.69	1.19	7	PACK-IBC014-C	60.7	6.0	10.2	490	PACK-CTC011-C	63.00	15.00	23.00	1960	
CH2140*M*00-*0	40	G	PACK-TBC034-C	60.00	0.69	1.19	7	PACK-IBC014-C	60.7	6.0	10.2	490	PACK-CTC011-C	63.00	15.00	23.00	1960	

PACKING METHOD (包裝方式)：

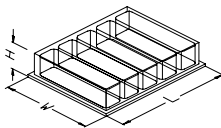
1 PVC BAG (塑膠袋)  
SIZE = L \* W



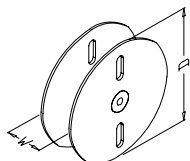
2 TUBE (塑膠管)  
SIZE = L \* W \* H



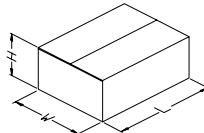
3 PVC TRAY (塑膠盒)  
SIZE = L \* W \* H



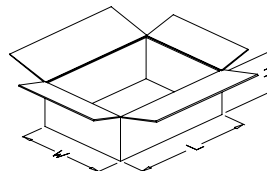
4 REEL (紙盤)  
SIZE = D \* W



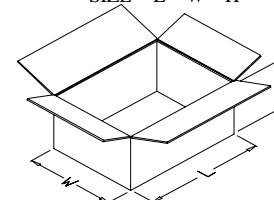
5 BOX (內紙盒)  
SIZE = L \* W \* H



6 INSIDE CARTON (內箱)  
SIZE = L \* W \* H



7 OUTSIDE CARTON (外箱)  
SIZE = L \* W \* H



PACKING METHOD CODE (包裝方式代碼)：

- A = 1 → 7
- B = 2 → 7
- C = 3 → 7
- D = 4 → 7
- E = 5 → 7
- F = 1 → 6 → 7
- G = (2+1) → 6 → 7
- H = 3 → 6 → 7