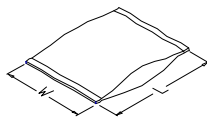




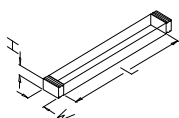
SERIES OR P/N	CIRCUITS	PACKING METHOD CODE	INNER PACKING NO.	INNER PACKING SIZE (CM)			INNER PACKING QTY	INSIDE CARTON NO.	INSIDE CARTON SIZE (CM)			PCS / INSIDE CARTON	CARTON NO.	CARTON SIZE (CM)			PCS / CARTON	G.W REF. (KG)
				L/D	W	H			L	W	H			L	W	H		
CF1603*M0R*/-LF	3	D	PACK-CRCB383-C	-	2.40	-	800	PACK-RLCB01-C	-	2.45	-	800	PACK-CTC034-C	35.0	35.0	29.0	7200	8.63
CF1604*M0R*/-LF	4	D	PACK-CRCB101-C	-	2.40	-	800	PACK-RLCB01-C	-	2.45	-	800	PACK-CTC034-C	35.0	35.0	29.0	7200	8.63
CF1605*M0R*/-LF	5	D	PACK-CRCB384C	-	2.40	-	800	PACK-RLCB01-C	-	2.45	-	800	PACK-CTC034-C	35.0	35.0	29.0	7200	8.76
CF1606*M0R*/-LF	6	D	PACK-CRCB18-C	-	2.40	-	800	PACK-RLCB01-C	-	2.45	-	800	PACK-CTC034-C	35.0	35.0	29.0	7200	9.03
CF1607*M0R*/-LF	7	D	PACK-CRCB385-C	-	2.40	-	800	PACK-RLCB01-C	-	2.45	-	800	PACK-CTC034-C	35.0	35.0	29.0	7200	9.22
CF1608*M0R*/-LF	8	D	PACK-CRCB33-C	-	2.40	-	800	PACK-RLCB01-C	-	2.45	-	800	PACK-CTC034-C	35.0	35.0	29.0	7200	9.49
CF1609*M0R*/-LF	9	D	PACK-CRCB386-C	-	2.40	-	800	PACK-RLCB01-C	-	2.45	-	800	PACK-CTC034-C	35.0	35.0	29.0	7200	9.75
CF1610*M0R*/-LF	10	D	PACK-CRCB20-C	-	2.40	-	800	PACK-RLCB01-C	-	2.45	-	800	PACK-CTC034-C	35.0	35.0	29.0	7200	10.02
CF1611*M0R*/-LF	11	D	PACK-CRCC202-C	-	3.20	-	800	PACK-RLCC01-C	-	3.25	-	800	PACK-CTC034-C	35.0	35.0	29.0	5600	8.77
CF1612*M0R*/-LF	12	D	PACK-CRCC32-C	-	3.20	-	800	PACK-RLCC01-C	-	3.25	-	800	PACK-CTC034-C	35.0	35.0	29.0	5600	8.83
CF1613*M0R*/-LF	13	D	PACK-CRCC203-C	-	3.20	-	800	PACK-RLCC01-C	-	3.25	-	800	PACK-CTC034-C	35.0	35.0	29.0	5600	8.89
CF1614*M0R*/-LF	14	D	PACK-CRCC02-C	-	3.20	-	800	PACK-RLCC01-C	-	3.25	-	800	PACK-CTC034-C	35.0	35.0	29.0	5600	8.95
CF1615*M0R*/-LF	15	D	PACK-CRCC204-C	-	3.20	-	800	PACK-RLCC01-C	-	3.25	-	800	PACK-CTC034-C	35.0	35.0	29.0	5600	9.01
CF1616*M0R*/-LF	16	D	PACK-CRCC69-C	-	3.20	-	800	PACK-RLCC01-C	-	3.25	-	800	PACK-CTC034-C	35.0	35.0	29.0	5600	9.07
CF1617*M0R*/-LF	17	D	PACK-CRCD312-C	-	4.40	-	800	PACK-RLCD01-C	-	4.45	-	800	PACK-CTC034-C	35.0	35.0	29.0	4000	7.11
CF1618*M0R*/-LF	18	D	PACK-CRCD62-C	-	4.40	-	800	PACK-RLCD01-C	-	4.45	-	800	PACK-CTC034-C	35.0	35.0	29.0	4000	7.22
CF1619*M0R*/-LF	19	D	PACK-CRCD313-C	-	4.40	-	800	PACK-RLCD01-C	-	4.45	-	800	PACK-CTC034-C	35.0	35.0	29.0	4000	7.32
CF1620*M0R*/-LF	20	D	PACK-CRCD58-C	-	4.40	-	800	PACK-RLCD01-C	-	4.45	-	800	PACK-CTC034-C	35.0	35.0	29.0	4000	7.42
CF1621*M0R*/-LF	21	D	PACK-CRCD314-C	-	4.40	-	800	PACK-RLCD01-C	-	4.45	-	800	PACK-CTC034-C	35.0	35.0	29.0	4000	7.52
CF1622*M0R*/-LF	22	D	PACK-CRCD05-C	-	4.40	-	800	PACK-RLCD01-C	-	4.45	-	800	PACK-CTC034-C	35.0	35.0	29.0	4000	7.67
CF1623*M0R*/-LF	23	D	PACK-CRCD315-C	-	4.40	-	800	PACK-RLCD01-C	-	4.45	-	800	PACK-CTC034-C	35.0	35.0	29.0	4000	7.79
CF1624*M0R*/-LF	24	D	PACK-CRCD10-C	-	4.40	-	800	PACK-RLCD01-C	-	4.45	-	800	PACK-CTC034-C	35.0	35.0	29.0	4000	7.92
CF1625*M0R*/-LF	25	D	PACK-CRCD316-C	-	4.40	-	800	PACK-RLCD01-C	-	4.45	-	800	PACK-CTC034-C	35.0	35.0	29.0	4000	8.04
CF1626*M0R*/-LF	26	D	PACK-CRCD01-C	-	4.40	-	800	PACK-RLCD01-C	-	4.45	-	800	PACK-CTC034-C	35.0	35.0	29.0	4000	8.16
CF1627*M0R*/-LF	27	D	PACK-CRCD317-C	-	4.40	-	800	PACK-RLCD01-C	-	4.45	-	800	PACK-CTC034-C	35.0	35.0	29.0	4000	8.18
CF1628*M0R*/-LF	28	D	PACK-CRCE16-C	-	5.60	-	800	PACK-RLCE01-C	-	5.65	-	800	PACK-CTC034-C	35.0	35.0	29.0	3200	7.14
CF1629*M0R*/-LF	29	D	PACK-CRCE117-C	-	5.60	-	800	PACK-RLCE01-C	-	5.65	-	800	PACK-CTC034-C	35.0	35.0	29.0	3200	7.29
CF1630*M0R*/-LF	30	D	PACK-CRCE15-C	-	5.60	-	800	PACK-RLCE01-C	-	5.65	-	800	PACK-CTC034-C	35.0	35.0	29.0	3200	7.43
CF1631*M0R*/-LF	31	D	PACK-CRCE118-C	-	5.60	-	800	PACK-RLCE01-C	-	5.65	-	800	PACK-CTC034-C	35.0	35.0	29.0	3200	7.58

PACKING METHOD (包裝方式) :

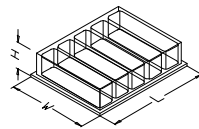
1 PVC BAG (塑膠袋)
SIZE = L * W



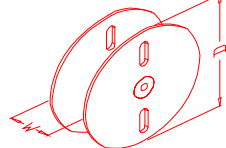
2 TUBE (塑膠管)
SIZE = L * W * H



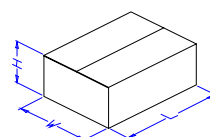
3 PVC TRAY (塑膠盒)
SIZE = L * W * H



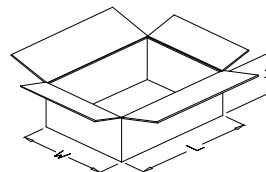
4 REEL (膠/紙盤)
SIZE = D * W



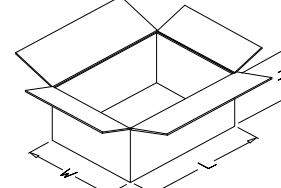
5 BOX (內紙盒)
SIZE = L * W * H



6 INSIDE CARTON (內箱)
SIZE = L * W * H



7 OUTSIDE CARTON (外箱)
SIZE = L * W * H



PACKING METHOD CODE (包裝方式代碼) :

- A = 1 → 7
- B = 2 → 7
- C = 3 → 7
- D = (4+1) → 7
- E = 5 → 7
- F = 1 → 6 → 7
- G = 2 → 6 → 7
- H = 3 → 6 → 7

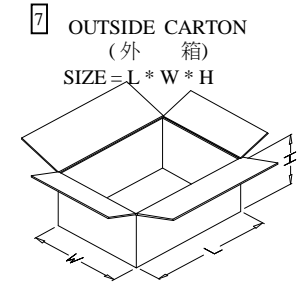
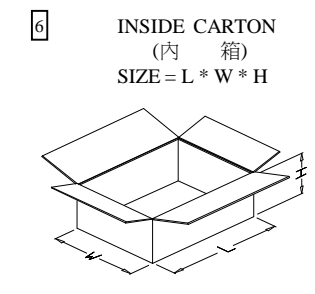
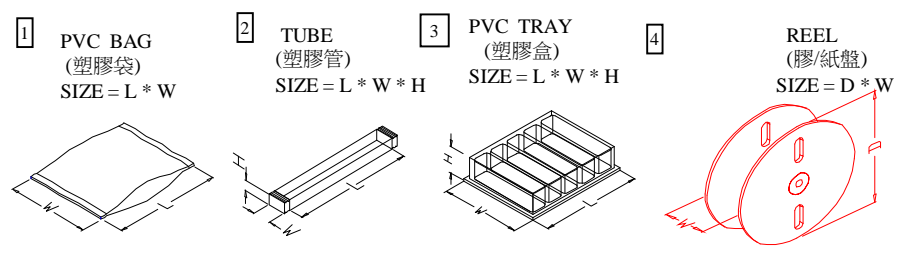


瀚荃股份有限公司 CviLux Corporation PACKING STANDARD

製訂日期：2014/08/07

SERIES OR P/N	CIRCUITS	PACKING METHOD CODE	INNER PACKING NO.	INNER PACKING SIZE (CM)			INNER PACKING QTY	INSIDE CARTON NO.	INSIDE CARTON SIZE (CM)			PCS / INSIDE CARTON	CARTON NO.	CARTON SIZE (CM)			PCS / CARTON	G.W REF. (KG)
				L/D	W	H			L	W	H			L	W	H		
CF1632*M0R*/-LF	32	D	PACK-CRCE26-C	-	5.60	-	800	PACK-RLCE01-C	-	5.65	-	800	PACK-CTC034-C	35.0	35.0	29.0	3200	7.72
注：CF16***M0R*-P,CF16***M0R*-H,CF16***M0R*-A,CF16***M0R*-B,CF16***M0R*-HNL依上列相同PIN包裝。 1.塑膠盤先用塑膠袋(PACK-PBC0**-C不打孔)裝好后再裝入外箱。 2.外箱中有紙板(PACK-STC016-C)兩塊、隔板(PACK-STC001-C)四個。																		

PACKING METHOD (包裝方式) :



PACKING METHOD CODE (包裝方式代碼) :
 A = 1 → 7
 B = 2 → 7
 C = 3 → 7
 D = (4+1) → 7
 E = 5 → 7
 F = 1 → 6 → 7
 G = 2 → 6 → 7
 H = 3 → 6 → 7

文件履歷表

文件編號	CI15F165				
文件名稱	PACKING STANDARD				
內容變更敘述					
版本	變更：CF16 奇數 PIN				發行日期
14	簽呈編號：XQMS021400008				2014.08.11
核准	Jackal	審核	Mavis	製表	伍曉紅
版本					發行日期
核准		審核		製表	
版本					發行日期
核准		審核		製表	
版本					發行日期
核准		審核		製表	
版本					發行日期
核准		審核		製表	
版本					發行日期
核准		審核		製表	
版本					發行日期
核准		審核		製表	
版本					發行日期
核准		審核		製表	
版本					發行日期
核准		審核		製表	