



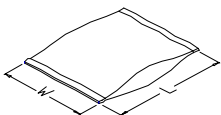
瀚荃股份有限公司
CviLux Corporation
PACKING STANDARD

製訂日期: 2009/2/10

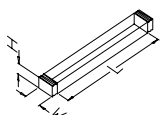
SERIES OR P/N	CIRCUITS	PACKING METHOD CODE	INNER PACKING NO.	INNER PACKING SIZE (CM)			INNER PACKING QTY	INSIDE CARTON NO.	INSIDE CARTON SIZE (CM)			PCS / INSIDE CARTON	CARTON NO.	CARTON SIZE (CM)			PCS / CARTON	G.W REF. (KG)
				L	W	H			L	W	H			L	W	H		
CF09004B0**	4	A	PACK-PBC002-C	29.0	23.0	0.008	6000					PACK-CTC005-C	50.9	32.8	24.9	90000	2.45	
CF09005B0**	5	A	PACK-PBC002-C	29.0	23.0	0.008	5000					PACK-CTC005-C	50.9	32.8	24.9	75000	3.83	
CF09006B0**	6	A	PACK-PBC002-C	29.0	23.0	0.008	5000					PACK-CTC005-C	50.9	32.8	24.9	75000	5.48	
CF09007B0**	7	A	PACK-PBC002-C	29.0	23.0	0.008	5000					PACK-CTC005-C	50.9	32.8	24.9	75000	7.13	
CF09008B0**	8	A	PACK-PBC002-C	29.0	23.0	0.008	4000					PACK-CTC005-C	50.9	32.8	24.9	60000	7.19	
CF09009B0**	9	A	PACK-PBC002-C	29.0	23.0	0.008	4000					PACK-CTC005-C	50.9	32.8	24.9	60000	8.51	
CF09010B0**	10	A	PACK-PBC002-C	29.0	23.0	0.008	4000					PACK-CTC005-C	50.9	32.8	24.9	60000	9.83	
CF09011B0**	11	A	PACK-PBC001-C	31.5	27.5	0.008	6000					PACK-CTC005-C	50.9	32.8	24.9	60000	11.16	
CF09012B0**	12	A	PACK-PBC001-C	31.5	27.5	0.008	5000					PACK-CTC005-C	50.9	32.8	24.9	50000	11.51	
CF09013B0**	13	A	PACK-PBC001-C	31.5	27.5	0.008	5000					PACK-CTC005-C	50.9	32.8	24.9	50000	11.64	
CF09014B0**	14	A	PACK-PBC001-C	31.5	27.5	0.008	5000					PACK-CTC005-C	50.9	32.8	24.9	50000	12.74	
CF09015B0**	15	A	PACK-PBC001-C	31.5	27.5	0.008	4000					PACK-CTC005-C	50.9	32.8	24.9	48000	11.24	
CF09016B0**	16	A	PACK-PBC001-C	31.5	27.5	0.008	4000					PACK-CTC005-C	50.9	32.8	24.9	48000	14.41	
CF09017B0**	17	A	PACK-PBC001-C	31.5	27.5	0.008	4000					PACK-CTC005-C	50.9	32.8	24.9	44000	14.23	
CF09018B0**	18	A	PACK-PBC001-C	31.5	27.5	0.008	4000					PACK-CTC005-C	50.9	32.8	24.9	44000	15.20	
CF09019B0**	19	A	PACK-PBC001-C	31.5	27.5	0.008	4000					PACK-CTC005-C	50.9	32.8	24.9	40000	14.76	
CF09020B0**	20	A	PACK-PBC001-C	31.5	27.5	0.008	4000					PACK-CTC005-C	50.9	32.8	24.9	40000	15.64	
CF09021B0**	21	A	PACK-PBC001-C	31.5	27.5	0.008	4000					PACK-CTC005-C	50.9	32.8	24.9	40000	16.52	
CF09022B0**	22	A	PACK-PBC001-C	31.5	27.5	0.008	3000					PACK-CTC005-C	50.9	32.8	24.9	30000	13.26	
CF09023B0**	23	A	PACK-PBC001-C	31.5	27.5	0.008	3000					PACK-CTC005-C	50.9	32.8	24.9	30000	13.92	
CF09024B0**	24	A	PACK-PBC001-C	31.5	27.5	0.008	3000					PACK-CTC005-C	50.9	32.8	24.9	30000	14.58	
CF09025B0**	25	A	PACK-PBC001-C	31.5	27.5	0.008	3000					PACK-CTC005-C	50.9	32.8	24.9	30000	15.24	
CF09026B0**	26	A	PACK-PBC001-C	31.5	27.5	0.008	3000					PACK-CTC005-C	50.9	32.8	24.9	30000	15.90	
CF09027B0**	27	A	PACK-PBC001-C	31.5	27.5	0.008	3000					PACK-CTC005-C	50.9	32.8	24.9	30000	16.56	
CF09028B0**	28	A	PACK-PBC001-C	31.5	27.5	0.008	3000					PACK-CTC005-C	50.9	32.8	24.9	30000	17.22	
CF09029B0**	29	A	PACK-PBC001-C	31.5	27.5	0.008	2000					PACK-CTC005-C	50.9	32.8	24.9	24000	14.50	
CF09030B0**	30	A	PACK-PBC001-C	31.5	27.5	0.008	2000					PACK-CTC005-C	50.9	32.8	24.9	24000	15.03	
CF09031B0**	31	A	PACK-PBC001-C	31.5	27.5	0.008	2000					PACK-CTC005-C	50.9	32.8	24.9	24000	15.56	

PACKING METHOD (包裝方式) :

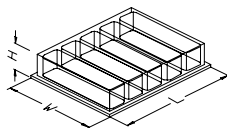
1 PVC BAG (塑膠袋)
SIZE = L * W



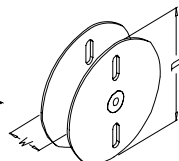
2 TUBE (塑膠管)
SIZE = L * W * H



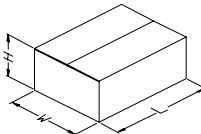
3 PVC TRAY (塑膠盒)
SIZE = L * W * H



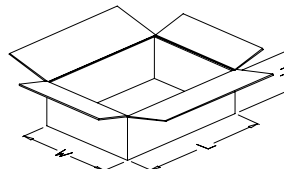
4 REEL (紙盤)
SIZE = D * W



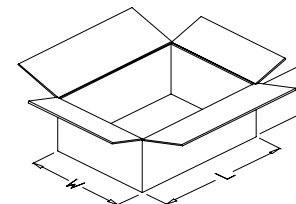
5 BOX (內紙盒)
SIZE = L * W * H



6 INSIDE CARTON (內箱)
SIZE = L * W * H



7 OUTSIDE CARTON (外箱)
SIZE = L * W * H



PACKING METHOD CODE (包裝方式代碼) :

- A = 1 → 7
- B = 2 → 7
- C = 3 → 7
- D = 4 → 7
- E = 5 → 7
- F = 1 → 6 → 7
- G = 2 → 6 → 7
- H = 3 → 6 → 7

核准：SMITH

審核：PETER

製訂：ANSON

