

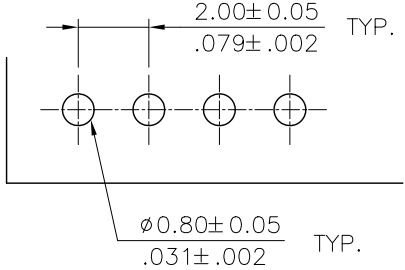
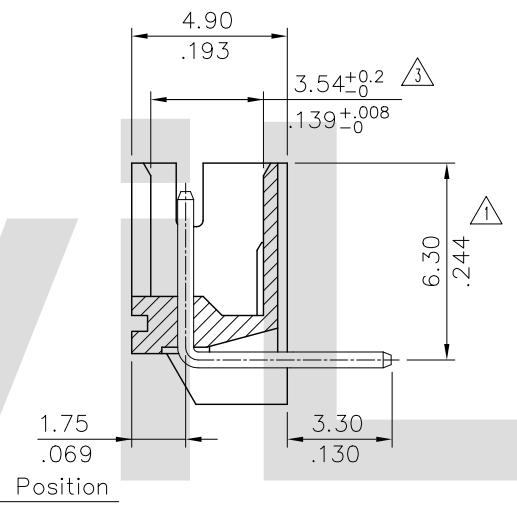
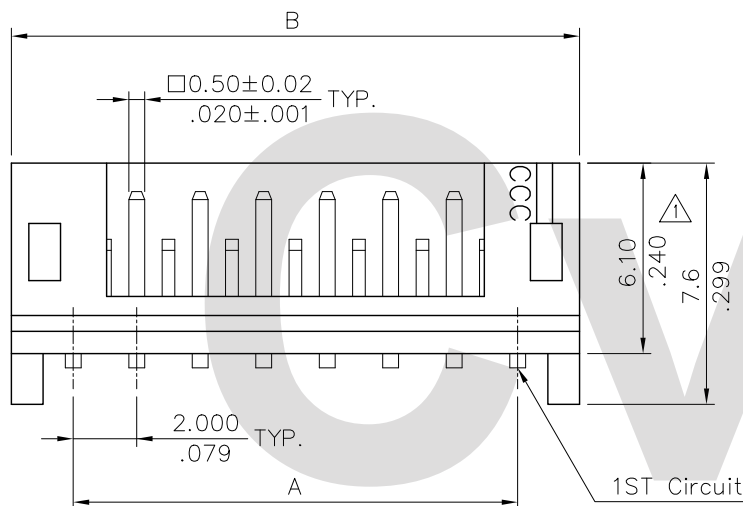
Note:

- 1. Material:
 - * Insulation: Nylon 66 UL 94V-0
 - Color Nature
 - * Contact: Brass
- △ 2. For Tin-Lead Wave Flow Process

Ordering Code:

CI01 ** P 1 H 0 0
 ① ② ③ ④ ⑤ ⑥ ⑦

- ① Series No.
- ② No. of Circuits:
- ③ P= Pin header
- ④ Plating: 1= 3.05μm(120μ") Min. Tin over 0.76μm(30μ") Nickel
- ⑤ Type:H= Right angle
- ⑥ Other option: 0= Without Pin Kinked
- ⑦ Process option:
- △ For Tin-Lead Wave Flow Process



Circuits	Dimension		
	A	B	C
2	2.00(.079)	6.0(.236)	4.90(.193)
3	4.00(.157)	8.0(.315)	6.90(.272)
4	6.00(.236)	10.0(.394)	8.90(.350)
5	8.00(.315)	12.0(.472)	10.90(.429)
6	10.00(.394)	14.0(.551)	12.90(.508)
7	12.00(.472)	16.0(.630)	14.90(.587)
8	14.00(.551)	18.0(.709)	16.90(.665)
9	16.00(.630)	20.0(.787)	18.90(.774)
10	18.00(.709)	22.0(.866)	20.90(.823)
11	20.00(.787)	24.0(.945)	22.90(.902)
12	22.00(.866)	26.0(1.024)	24.90(.980)
13	24.00(.945)	28.0(1.102)	26.90(1.059)
14	26.00(1.024)	30.0(1.181)	28.90(1.138)
15	28.00(1.102)	32.0(1.260)	30.90(1.217)
16	30.00(1.181)	34.0(1.338)	32.90(1.295)

Recommended P.C. Board Layout

Tin-Lead Process

RoHS compliant

SYM	NAME	DATE	REVISIONS
△ 4	Enya	3/6-13'	ECN13056-0/ECR13007-1
△ 3	SUN	11/02/04	ECR04096-0/ECN04425
△ 2	Sandy	8/05/04	ECN04300
△ 1	Casey	5/20/04	ECN04202

CVILUX CORP
 2013.05.07
 ISSUED

DRAWN BY:	Enya	3/06-13'
ENGINEER:	Eisley	3/09-13'
CHECKED BY:	Eisley	3/09-13'
APPROVED BY:	David	3/09-13'

UNIT: mm / inch	
TOLERANCE UNLESS OTHERWISE SPECIFIED	
.X ± 0.30/012	X' ± 1"
.XX ± 0.20/008	.X' ±
.XXX ± 0.10/004	.XX ±

TITLE:	2.00MM(.079") RIGHT ANGLE HEADER
MATERIAL:	
FINISH:	

瀚荃股份有限公司 CviLux Corporation			
DRAWING NO.	CI0124SE	PART NO.	CI01**P1H00
SCALE	4 / 1	SHEET	1 OF 1