

Material:

* Insulation: Glass filled polyester UL 94V-0

* Contact: Brass

Ordering Code:

CA23 ** P A 1 00
① ② ③ ④ ⑤ ⑥

① Series No.

② No. of Circuits:

③ Contact type: P= Plug

④ Plating option:

A= Selective Gold flash plated over $1.27\mu\text{m}(50\mu\text{'})$ Nickel

B= Selective $0.38\mu\text{m}(15\mu\text{'})$ Gold plated over $1.27\mu\text{m}(50\mu\text{'})$ Nickel

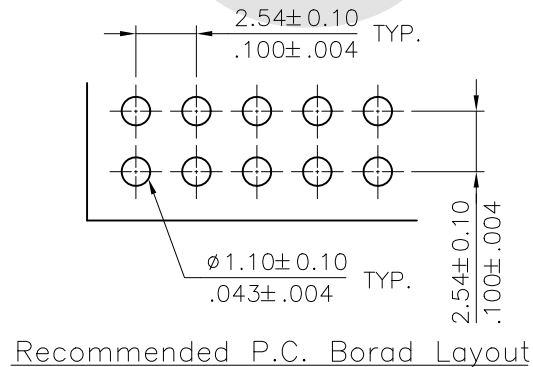
C= Selective $0.76\mu\text{m}(30\mu\text{'})$ Gold plated over $1.27\mu\text{m}(50\mu\text{'})$ Nickel

⑤ Color: 1= Black

⑥ Other Options:

00= Standard

RoHS Compliant



Circuits	Dimension			
	A	B	C	D
6	5.08(.200)	11.52(.454)	6.35(.250)	10.82(.426)
8	7.62(.300)	14.06(.554)	8.89(.350)	13.36(.526)
10	10.16(.400)	16.60(.654)	11.43(.450)	15.90(.626)
12	12.70(.500)	19.14(.754)	13.97(.550)	18.44(.726)
14	15.24(.600)	21.68(.857)	16.51(.650)	20.98(.826)
16	17.78(.700)	24.22(.954)	19.05(.750)	23.52(.926)
18	20.32(.800)	26.76(1.054)	21.59(.850)	26.06(1.026)
20	22.86(.900)	29.30(1.154)	24.13(.950)	28.60(1.126)
22	25.40(1.000)	31.84(1.254)	26.67(1.050)	31.14(1.226)

Circuits	Dimension			
	A	B	C	D
24	27.94(1.100)	34.38(1.354)	29.21(1.150)	33.68(1.326)
26	30.48(1.200)	36.92(1.454)	31.75(1.250)	36.22(1.426)
28	33.02(1.300)	39.46(1.554)	34.29(1.350)	38.76(1.526)
30	35.56(1.400)	42.00(1.654)	36.83(1.450)	41.30(1.626)
32	38.10(1.500)	44.54(1.754)	39.37(1.550)	43.84(1.726)
34	40.64(1.600)	47.08(1.854)	41.91(1.650)	46.38(1.826)
36	43.18(1.700)	49.62(1.954)	44.45(1.750)	48.92(1.926)
40	48.26(1.900)	54.70(2.154)	49.53(1.950)	54.00(2.126)
44	53.34(2.100)	59.78(2.354)	54.61(2.150)	59.08(2.326)
50	60.96(2.400)	67.40(2.654)	62.23(2.450)	66.70(2.626)
60	73.66(2.900)	80.10(3.154)	74.93(2.950)	79.40(3.126)
64	78.74(3.100)	85.18(3.354)	80.01(3.150)	84.48(3.326)

⑦	Ken	1/9-17'	ECRB116097/ECNT117076		DATE	UNIT: mm / inch	TITLE: 2.54MM (.100") RIBBON CABLE IDC DIP PLUG	 瀚荃股份有限公司 CviLux Corporation
⑥	Una	11/12-10'	ECN10365	DRAWN BY: Ken	5/02-17'	TOLERANCE UNLESS OTHERWISE SPECIFIED	MATERIAL:	
⑤	Sun	9/11-08'	ECR08054-3/ECN08440	ENGINEER: Sun	5/03-17'	.X ± 0.35/.014 X' ± 1'	FINISH:	DRAWING NO. CA2301SJ PART NO. CA23**P**00
④	Sun	11/13-07'	ECR07152-3/ECN07467	CHECKED BY: Eisley	5/03-17'	.XX ± 0.25/.010 X' ±	SCALE 2 / 1	SHEET 1 OF 1
SYM	NAME	DATE	REVISIONS	APPROVED BY: Eisley	5/03-17'	.XXX ± 0.10/.004 .XX ±		

CIVILUX CORP
2017.05.04
ISSUED