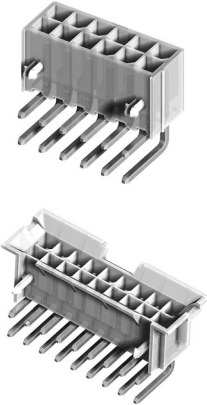


**CP-014 Series Right Angle DIP Solder Headers**

- ⊙ Option with mounting ears or pegs
- ⊙ Mates with CP-011 connector
- ⊙ Nylon 66 UL 94V-0 or V-2 insulator material

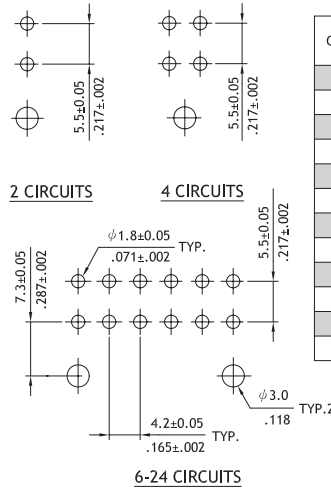
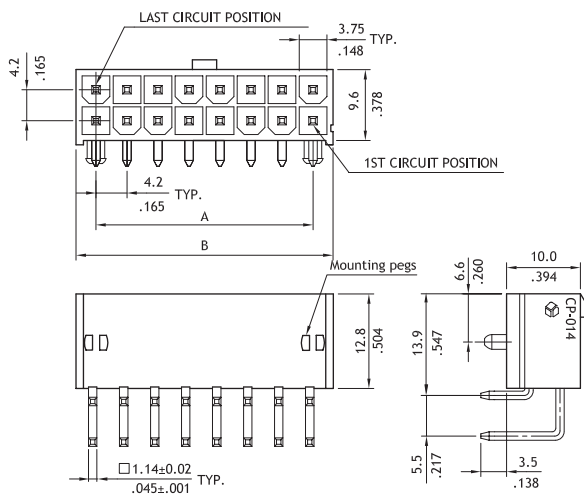


**Ordering code**

**1** CP - 01 **2** 4 **3** 24 **4** 1 **5** 4 **6** 0

- 1** Series No.
- 2** Type of Connector:  
4= Right angle PCB mount header
- 3** No of Circuits :  
See below table
- 4** Plating code:  
1= Tin over Nickel plated
- 5** Variation:  
4= UL 94V-2, with mounting pegs  
5= UL 94V-0, with mounting pegs  
6= UL 94V-2, B.M.I type  
7= UL 94V-0, B.M.I type  
G= GWT type, with mounting pegs  
H= GWT type, B.M.I type
- 6** Other options:  
0= Standard  
\*Special options consult manufacturer

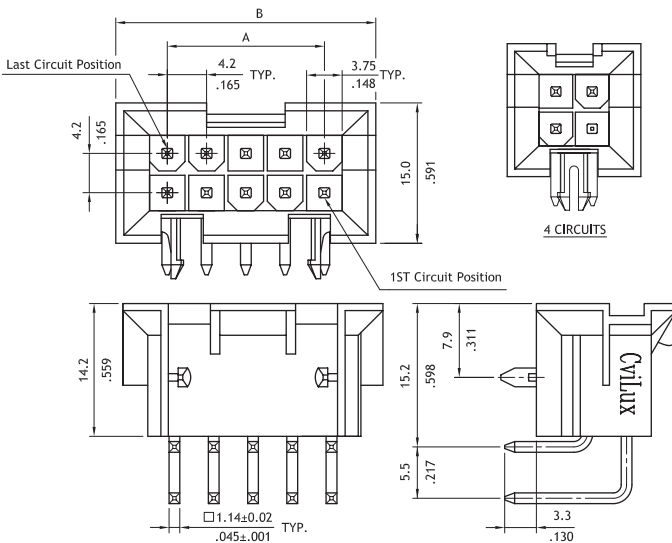
P/N CP-014\*\*140 / CP-014\*\*150 / CP-014\*\*1G0



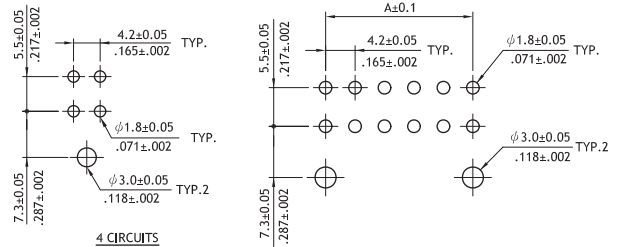
Circuits	Dimension	
	A	B
2	-	6.0(.236)
4	4.2(.165)	10.2(.402)
6	8.4(.331)	14.4(.567)
8	12.6(.496)	18.6(.732)
10	16.8(.661)	22.8(.898)
12	21.0(.827)	27.0(1.063)
14	25.2(.992)	31.2(1.228)
16	29.4(1.157)	35.4(1.394)
18	33.6(1.322)	39.6(1.559)
20	37.8(1.487)	43.8(1.724)
22	42.0(1.652)	48.0(1.890)
24	46.2(1.817)	52.2(2.055)

Recommended P.C. Board layout

P/N CP-014\*\*160 / CP-014\*\*170 / CP-014\*\*1H0



Circuits	Dimension	
	A	B
4	4.2(.165)	15.2(.598)
6	8.4(.331)	19.4(.764)
10	16.8(.661)	27.8(1.094)
14	25.2(.992)	36.2(1.425)
18	33.6(1.323)	44.6(1.756)
24	46.2(1.819)	57.2(2.252)



Recommended P.C. Board layout

WIRE TO BOARD