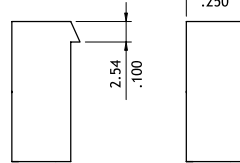
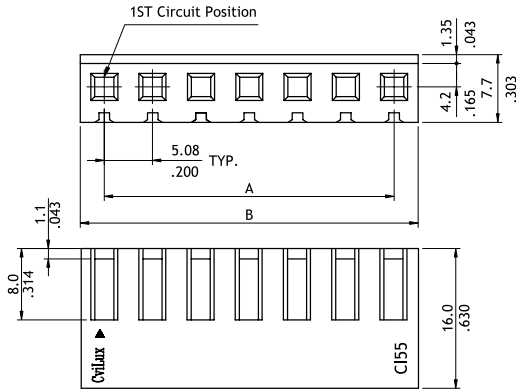


## CI55 Series 5.08mm(.200") Wire to Board Connectors

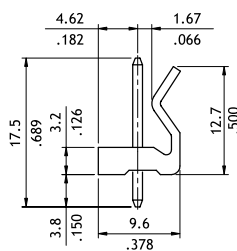
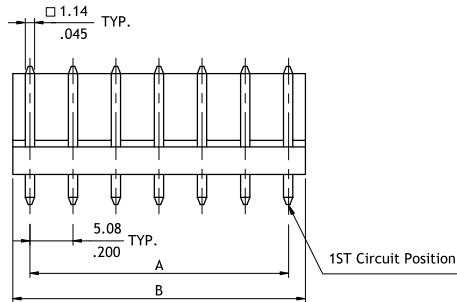
- Housing with locking ramp
- Header with locking wall
- Can be used CI51 crimp clip terminal
- Insulator: Nylon 66 UL 94V-2 , Color Nature
- With Tin plated 1.14mm square pin
- Terminal: Tin plated Brass



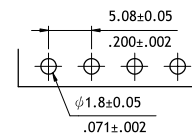
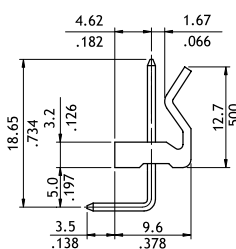
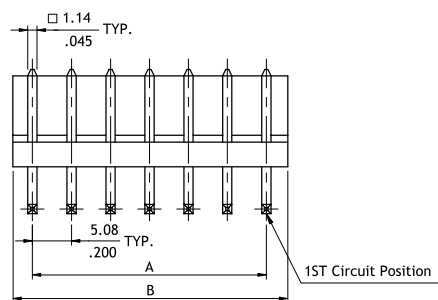
P/N: CI55\*\*S0000

P/N: CI55\*\*S000R

Circuits	Dimension	
	A	B
2	5.08(.200)	10.1(.398)
3	10.16(.400)	15.2(.598)
4	15.24(.600)	20.5(.807)
5	20.32(.800)	25.3(.996)
6	25.40(1.00)	30.6(1.205)
7	30.48(1.20)	35.5(1.398)
8	35.56(1.40)	40.8(1.606)
9	40.64(1.60)	45.6(1.795)
10	45.72(1.80)	50.7(1.996)



Circuits	Dimension	
	A	B
2	5.08(.200)	10.2(.402)
3	10.16(.400)	15.2(.598)
4	15.24(.600)	20.3(.799)
5	20.32(.800)	25.4(1.000)
6	25.40(1.000)	30.5(1.201)
7	30.48(1.200)	35.6(1.402)
8	35.56(1.400)	40.6(1.598)
9	40.64(1.600)	45.7(1.799)
10	45.72(1.800)	50.8(2.000)



Recommended P.C. Board Layout

### Ordering Code

① ② ③ ④  
**CI55 10 S 0000**

- ① Series No.
- ② No. of Circuits: 02 to 10
- ③ S = Housing
- ④ Other Options:  
0000 = Standard  
000R = Without Locking Ramp  
\*Special options consult manufacturer

① ② ③ ④ ⑤ ⑥  
**CI55 10 P 1 V 00**

- ① Series No.
- ② No. of Circuits: 02 to 10
- ③ P = DIP header
- ④ Plating code: 1 = Tin over Nickel
- ⑤ Type: V = Straight  
H = Right angle
- ⑥ Other Options: 00 = Standard  
\*Special options consult manufacturer